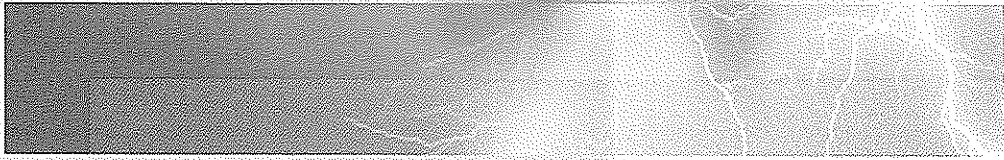
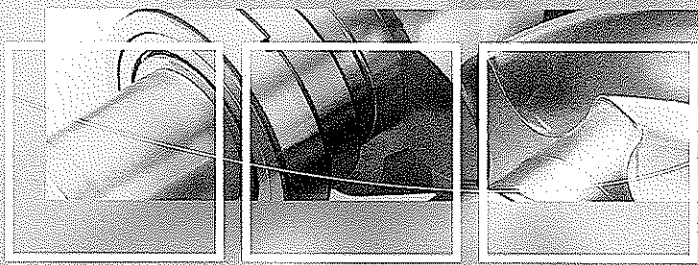
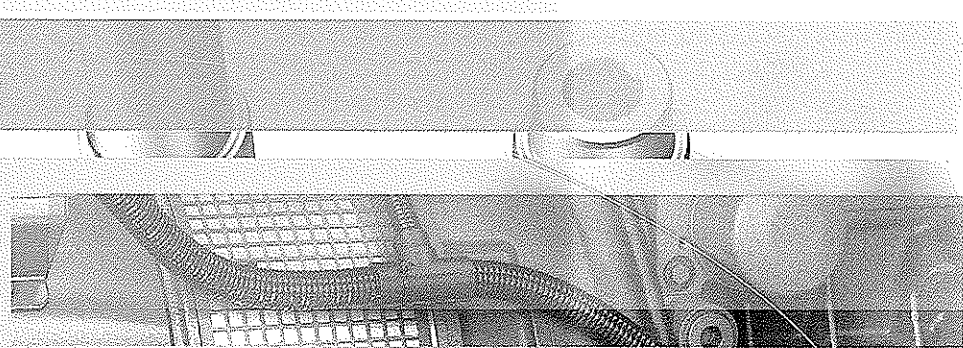


# Atlas Copco Portable Air Compressor

XAS 185 JD7

## Parts list

1310 3011 74 Ed. 0 2007-02



## SAFETY PRECAUTIONS FOR PORTABLE COMPRESSORS

To be read attentively and acted on accordingly before  
towing, operating or repairing the unit.

Besides the summarized safety precautions, an elaborate commentary upon the subject is published as a Service Bulletin, ASB Printed Matter No. 2931 0577 00 (=80577), enclosed with the technical literature delivered with each machine. If your copy should be missing, do not hesitate to claim one from your Atlas Copco agency. People responsible for working with or on Atlas Copco equipment shall read the contents of the bulletin mentioned above and act accordingly.

In addition to normal safety rules which should be observed with portable air compressors, the following safety directions and precautions are of special importance.

When operating this compressor unit, the operator is expected to employ safe working practices and to observe all related local work safety requirements.

The owner is responsible for maintaining the compressor in a safe operating condition. Compressor parts and accessories shall be replaced if unsuitable for safe operation.

Handling, operation, maintenance and repair shall only be performed by authorized, trained, competent personnel.

Normal ratings (pressures, temperatures, speeds, etc.) shall be durably marked.

**If any statement in this book, especially with regard to safety, does not comply with local legislation, the stricter of the two shall apply.**

**These precautions are general and cover several machine types and equipment, hence some statements may not apply to the unit described in this book.**

### Handling and operation

To lift a unit, all loose or pivoting parts, e.g., doors and drawbar, shall first be securely fastened. Do not attach cables, chains or ropes directly to the lifting eye; apply a crane hook or lifting shackle meeting local safety rules.

It is strictly forbidden to dwell or stay in the risk zone under a lifted load.

Lifting acceleration and retardation shall be kept within safe limits.

1. Before towing the compressor:
    - a. Ascertain that the pressure vessel(s) are depressurized.
    - b. Check the drawbar, the coupling of the towing vehicle, the brake system and the towing eye.
    - c. Check that the pivot wheel or stand leg is safely locked in the raised position.
    - d. Check that the wheels are secure and that the tires are in good condition and inflated correctly.
    - e. Connect the signalization cable, check all lights and connect the pneumatic brake couplers.
    - f. Attach the safety break-away cable to the towing vehicle.
    - g. Disengage the parking brake.
  2. If the unit is to be backed up by the towing vehicle, disengage the overrun brake mechanism.
  3. Never exceed the maximum towing speed of the unit.
  4. Place the unit on level ground and apply the parking brake before disconnecting the unit from the towing vehicle. Unclip the safety breakaway cable.
  5. When the unit has to operate in a fire-hazardous environment, each engine exhaust has to be provided with a spark arrestor to trap incendiary sparks.
  6. When the unit is used in a confined space, conduct the engine exhaust to the outside atmosphere by a suitable pipe or hose of not less than 100mm (4 in.) diameter. The exhaust contains carbon monoxide which is a lethal gas.
  7. No external force may be exerted on the air outlet valves (e.g., by pulling on hoses) or by installing auxiliary equipment directly to a valve (e.g., a water separator, a lubricator, etc.)
  8. Distribution pipework and air hoses must be of correct size and suitable for the working pressure. Never use frayed, damaged or deteriorated hoses. Use only the correct type and size of hose end fittings and connections.

A hose connected to a 2 in. (50mm) valve must be provided with a safety wire fixed to the hose for effective pressures as from 10 bar (145 psi) up, although it is recommended to apply such safeguard already from 4 bar (60 psi) up. The safety wire ends have to be attached, one to the eye provided next to the compressor air outlet valve, the other one to a point near to the air inlet of the applied equipment.
- Close the compressor air outlet valve before connecting or disconnecting a hose. Ascertain that a hose is fully depressurized before disconnecting it.
- When blowing through a hose or air line, ensure that the open end is held securely. A free end will whip and may cause injury.
- Never play with compressed air. Never apply it to your skin or direct an air stream at people. Never use it to clean dirt from your clothes. When using it to clean down equipment, do so with extreme caution and use eye protection.
- Never use other than oil-free air compressors for supplying breathing air, unless it is known to be properly purified for such use. Breathing air must always be supplied at stable, suitable pressure.
9. Never refill fuel while the compressor is running. Keep fuel away from hot pipes. Do not smoke when fueling. When fueling from an automatic pump, a ground cable should be connected to the unit to discharge static electricity.
  10. Never operate the unit in surroundings where there is a possibility of taking in flammable or toxic fumes.

(continued on back cover)

# **Atlas Copco** Portable Air Compressor

XAS 185 JD7

## **Parts list**

1310 3011 74 Ed. 0 2007-02

**“Copyright 2007, Atlas Copco Compressors LLC Westfield, Massachusetts  
Any unauthorized use or copying of the contents or any part of this book is  
prohibited. This applies in particular to trademarks, model denominations, part  
numbers and drawings.”**

No. 1310 3011 74 Ed. 0  
2007-02

---

The Atlas Copco logo consists of the brand name "Atlas Copco" in a stylized, italicized serif font. The text is centered between two thick, solid black horizontal bars, one above and one below the text.

## OWNERSHIP DATA

Unit model: \_\_\_\_\_ Owner's machine no.: \_\_\_\_\_  
Electric motor type: \_\_\_\_\_ Unit service no.: \_\_\_\_\_  
Delivery date: \_\_\_\_\_ Motor serial no.: \_\_\_\_\_  
Service plan: \_\_\_\_\_ First start-up date: \_\_\_\_\_

## Selected Lubricants

Compressor: \_\_\_\_\_ Capacity: \_\_\_\_\_  
Bearing grease type, electric motor: \_\_\_\_\_

Printed Matter Nos.

Atlas Copco instruction book: \_\_\_\_\_ Atlas Copco logbook: \_\_\_\_\_  
Atlas Copco parts list: \_\_\_\_\_ Motor parts list: \_\_\_\_\_

## Local Atlas Copco Representative

Name: \_\_\_\_\_

Address: \_\_\_\_\_

Telephone: \_\_\_\_\_ Contact persons: \_\_\_\_\_ Service: \_\_\_\_\_

Telefax: \_\_\_\_\_ Parts: \_\_\_\_\_

## Example parts list

<u>Ref.</u>	<u>Part number</u>	<u>Qty</u>	<u>Name</u>	<u>Remarks</u>
1	1310 0332 64	158	Screw - Round Head	
2	1310 0326 91	2	Hinge	
3	1310 0326 79	2	Fender	

## Explanation of columns:

**Ref.** - Reference number. Relates a part in list and drawing. "x" means that the part is not shown on the drawing. "-" indicates the beginning of a new list item.

**Part number.** "----" directs to consult another list of which the heading mostly has the same designation. "\*\*\*\*" means that the part is not available as spare part. Parts followed by one dot are comprised in the assembly(ies) listed above the first dot.

**Qty** - A number indicating the quantity of parts. The quantity is only related to its corresponding reference number ("Ref") and may differ from the total quantity of this part for the entire unit. For parts of an assembly the quantity mentioned is for one assembly. "AR" means "as required" : bulk material or quantity to be determined.

**Name** - Mostly part names. When machine types, Classification Societies, dimensions, etc. are mentioned under the same "Designation", look carefully for the part number for your specific equipment. When a selection is to be made, the various selections are indented and preceded by a dash.

**Remarks** - A number followed by a bracket, e.g. 1), refers to a footnote.

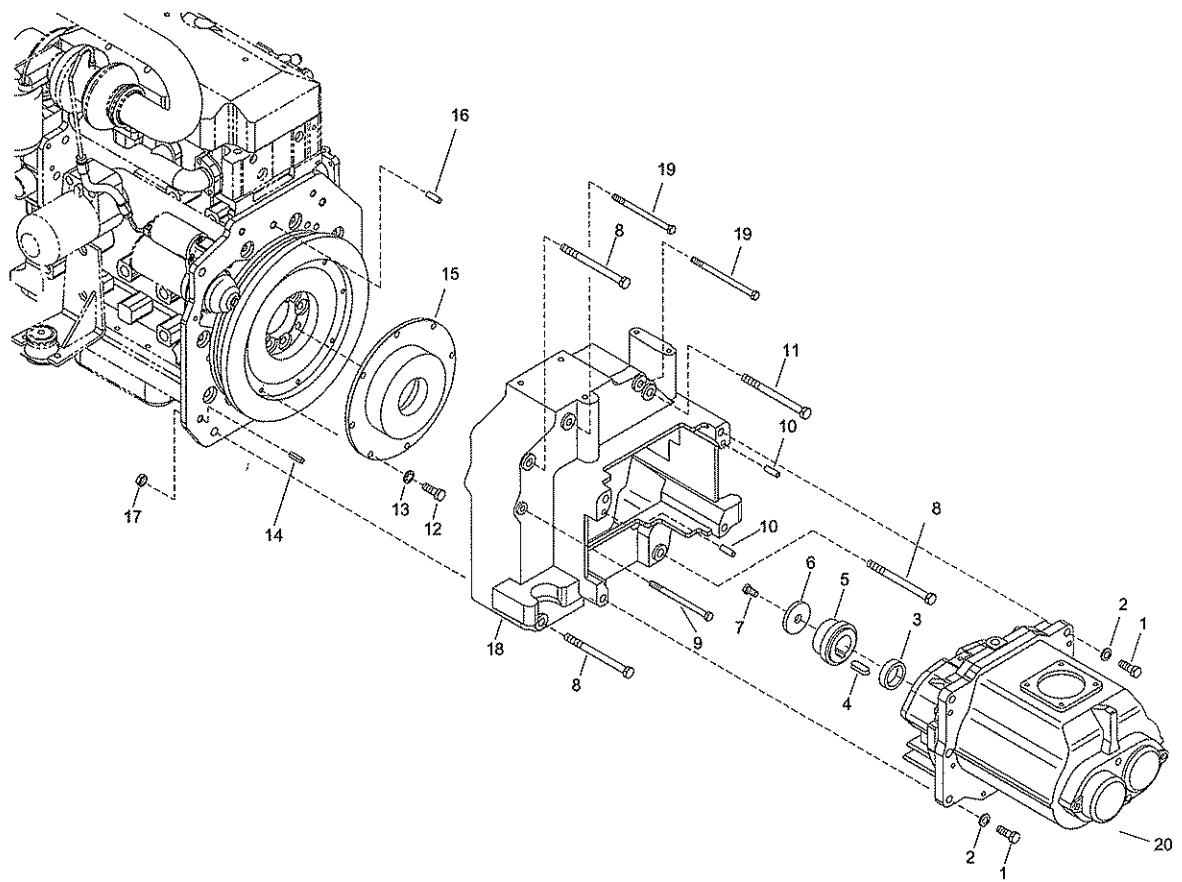
A number in bold, e.g. 1, refers to a "Service Kit". For the "Service Kit" number, see below list. Parts of one "Service Kit" may be spread over several pages.

## ORDERING PARTS

Always quote the part number, "Designation" and quantity of the desired parts as well as type designation and serial number of the unit.

## Table of Contents

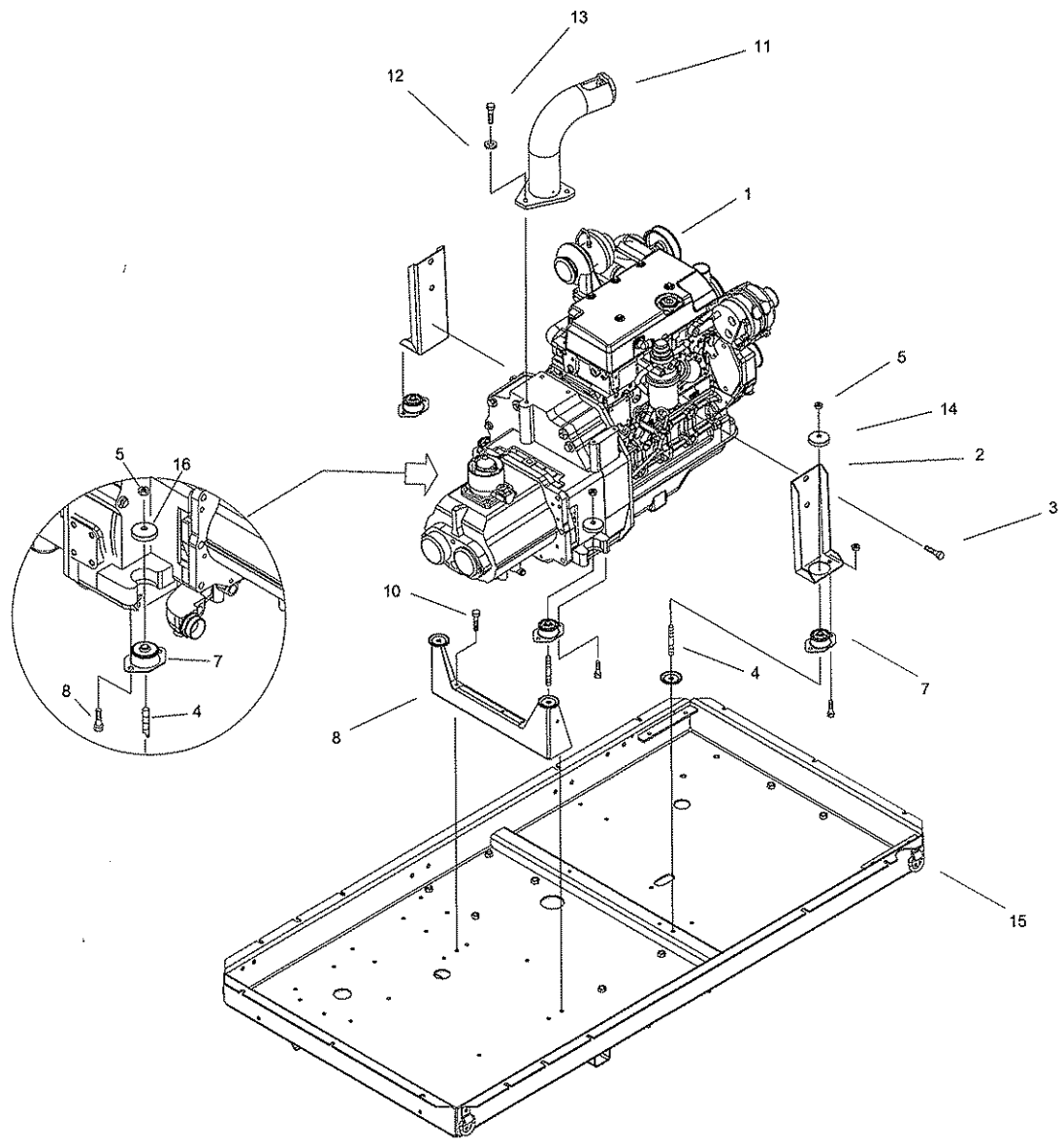
1.	Compressor Drive Group.....	5
2.	Engine Mounts .....	7
3.	Air Intake.....	9
4.	Exhaust System .....	11
5.	Cooling System.....	13
6.	Air Outlet.....	15
7.	Oil System .....	17
8.	Regulating System .....	19
9.	Fuel System.....	21
10.	Hood Assembly Steel Version.....	23
11.	Body Work Steel Version .....	25
12.	Hood Assembly Steel Version.....	27
13.	Bodywork PE Version.....	29
14.	Control Panel.....	31
15.	Electrical System .....	33
16.	Road Lighting.....	35
17.	Drawbar, Axle Assembly.....	37
18.	Decal Location .....	39
19.	Air Receiver .....	41
20.	Unloader Valve .....	43
21.	Actuating Valve Assembly .....	45
22.	Air Receiver Service Kit .....	47
23.	Unloader Valve Service Kit .....	49
24.	Speed Regulator Service Kit.....	51
25.	Maintenance Kits .....	53



## 1. Compressor Drive Group

Ref	Part number	Qty	Name	Remarks
1	0211 1404 00	4	Cap screw	
2	0300 0274 92	4	Washer	
3	1604 0745 00	1	Bushing	
4	0337 5196 00	1	Parallel key	
5	1604 0774 00	1	Coupling (male)	
6	1615 5441 00	1	Washer	
7	0147 1962 71	1	Hex head screw	
8	1310 0301 39	3	Bolt m14 x 160	
9	0147 1382 03	1	Bolt m10 x 140	
10	0108 1392 00	2	Spring pin	
11	0147 1457 03	1	Bolt m14 x 140	
12	SCRO 0918	6	Cap screw .312" x 1.0l	
13	0333 3227 00	6	Lockwasher	
14	0108 3417 00	2	Spring pin	
15	1604 0761 00	1	Coupling (female)	
16	0102 0460 00	1	Parallel pin	
17	0291 1113 00	3	Locknut	
18	1615 9398 01	1	Housing	
19	0147 1420 03	2	Bolt m12 x 140	
20	1616 7194 80	1	Element O.I.S. K-38	

1310 9045 00 Rev. 00

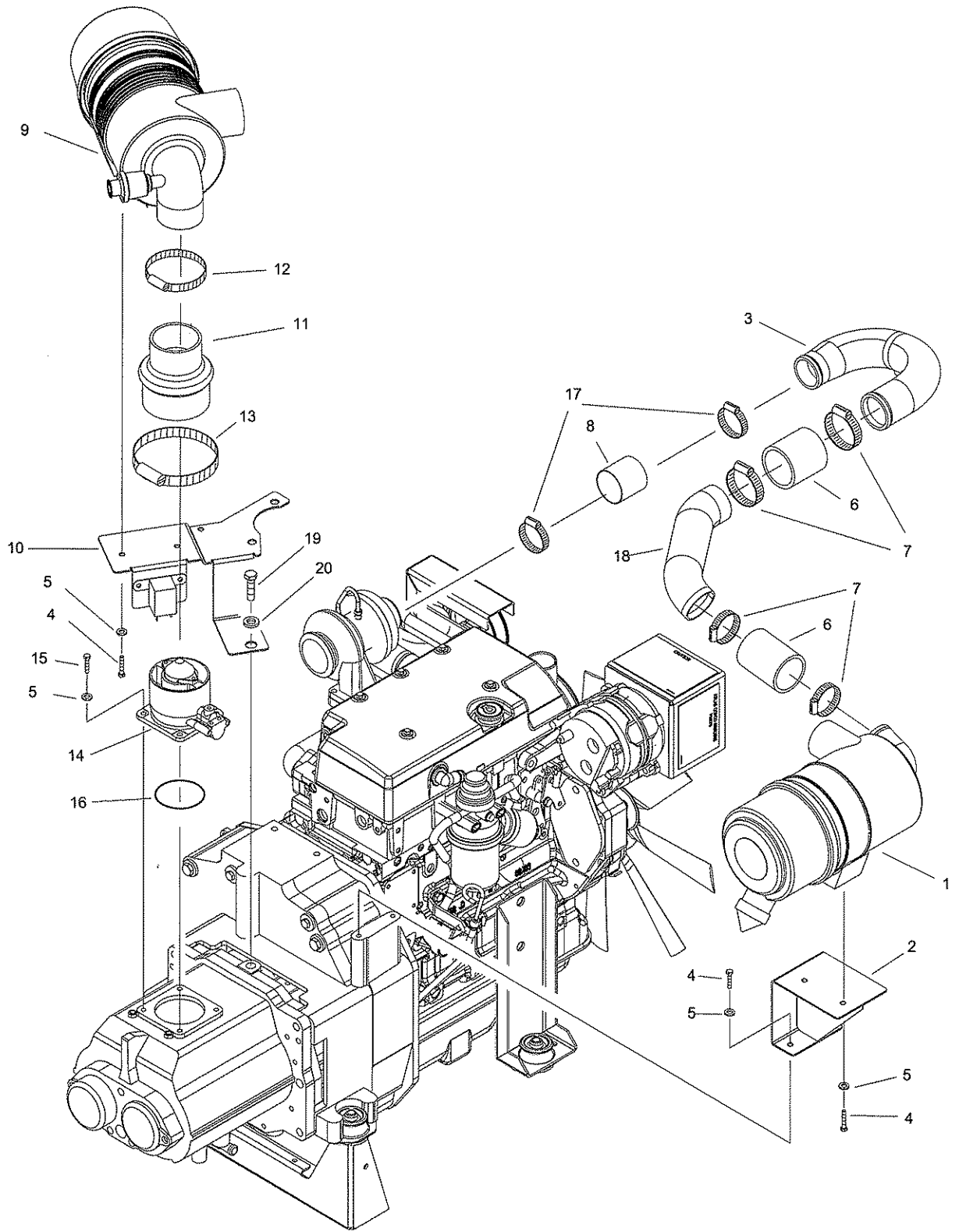




## 2. Frame and Mounts

Ref	Part number	Qty	Name	Remarks
1	1310 0304 11	1	Engine - Diesel	
2	1310 4254 00	2	Mount - Engine	
3	0147 1476 03	4	Screw - M16 x 35	
4	1310 0302 95	4	Stud	
5	0291 1111 00	4	Locknut - M10	
6	1202 8719 00	2	Disk	
7	1202 9006 02	4	Vibration mount	
8	0147 1360 03	8	Screw - M10 x 20	
9	1310 4252 00	1	Support	
10	1619 2766 00	4	Screw	
11	1604 4099 31	1	Lifting Hook	
12	0301 2358 00	3	Washer	
13	0147 1402 15	3	Screw	
14	1604 4220 00	4	Limiting Disc	
15	1310 4102 00	1	Frame	

1310 9045 01 Rev. 00

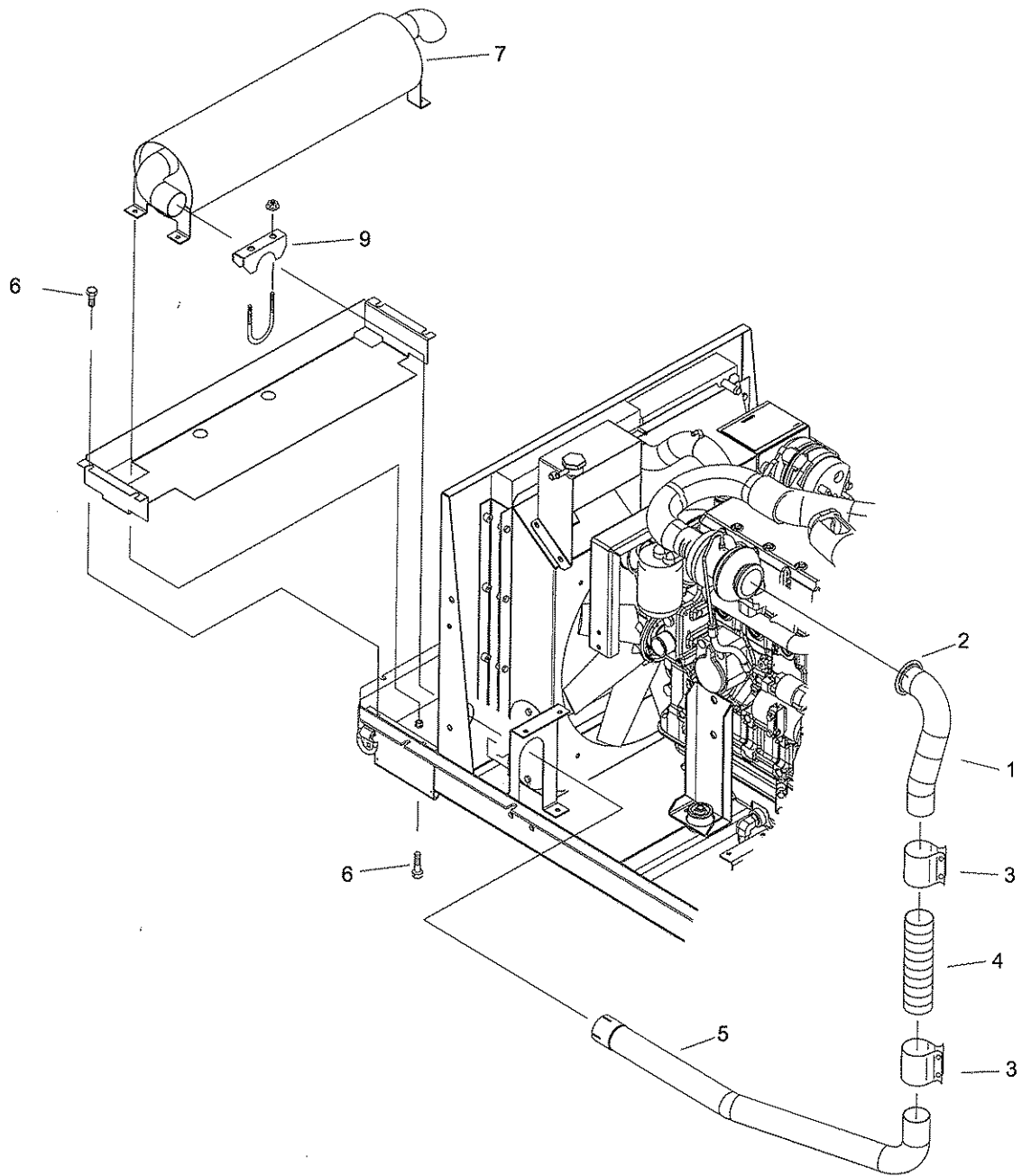


### 3. Air Intake

Ref	Part number	Qty	Name	Remarks
1	1310 0301 58	1	Air Cleaner -Engine	1), 2)
2	1310 4152 00	1	Support	
3	1310 0301 66	1	Duct	
4	0147 1323 03	6	Screw	
5	0301 2335 00	6	Washer	
6	1310 0345 21	2	Hose	
7	1310 0323 83	4	Clamp	
8	1310 0301 55	1	Hose	
9	1310 0301 59	1	Air Cleaner - Compressor	3), 4)
10	1310 4153 00	1	Support	
11	1310 0341 73	1	Hump Hose	
12	0347 6131 00	3	Clamp M77	
13	0347 6119 00	1	Clamp M110	
14	1615 7667 82	1	Unloading Valve	
15	0211 1325 00	14	Screw	
16	0663 2106 16	1	O-Ring	
17	0347 6113 00	2	Hose Clamp	
18	1310 4256 00	1	Pipe Air Inlet	
19	0147 1475 03	1	Screw	
20	0301 2378 00	1	Washer	

- 1) 1310030160 Element-Engine Air Filter
- 2) 1310030310 Element-Engine Safety Cartridge (optional)
- 3) 1310033926 Element-Compressor Air Filter
- 4) 1310030309 Element-Compressor Safety Cartridge (optional)

1310 9045 02 Rev. 00

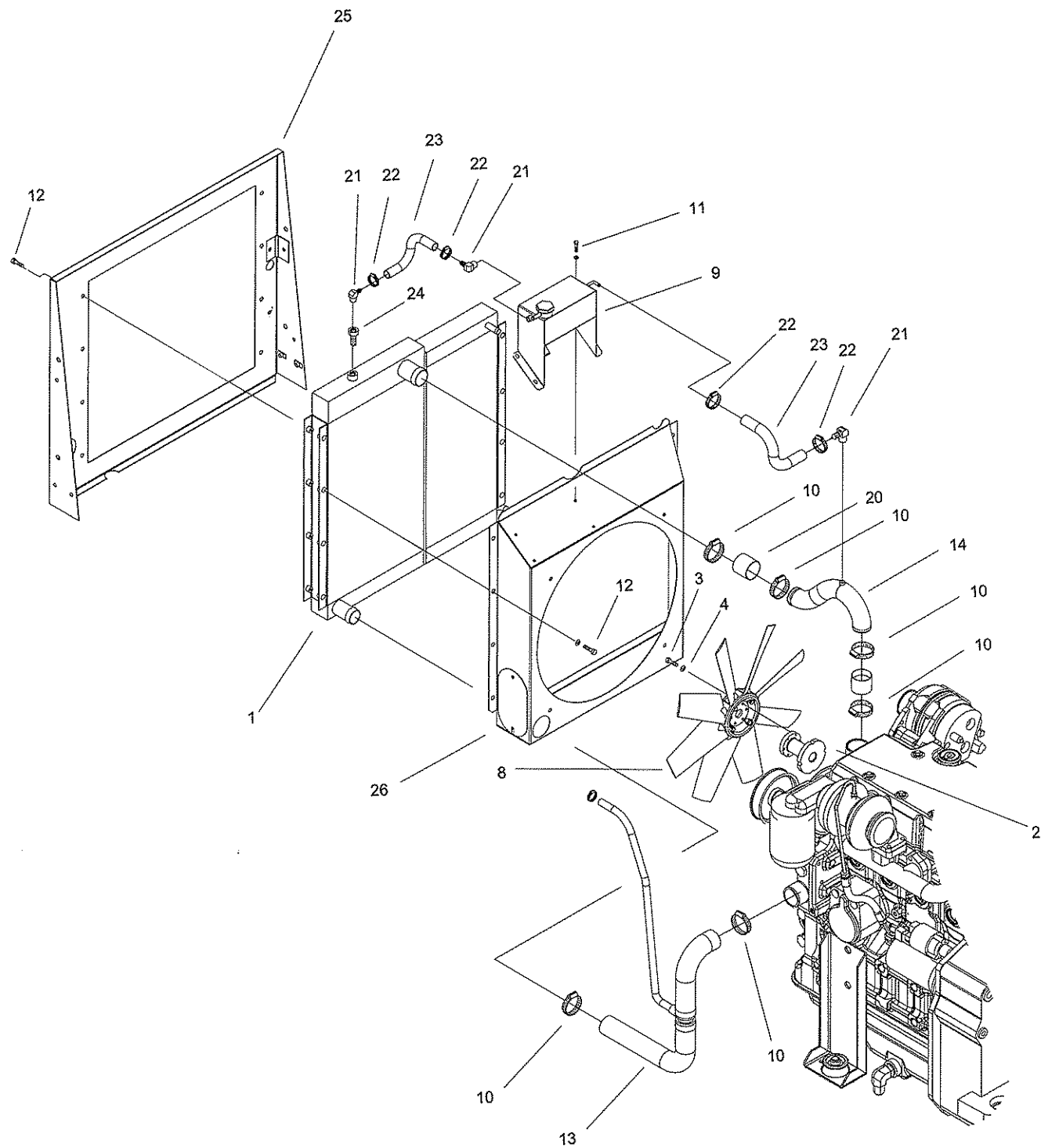


4.

#### 4. Exhaust System

Ref	Part number	Qty	Name	Remarks
1	1310 4150 00	1	Exhaust Pipe	
2	1310 0301 62	1	Clamp - "V" Band	
3	1310 0345 55	2	Clamp - Exhaust "2.25"	
4	1310 0339 54	1	Hose - Flex Metal	
5	1310 4151 00	1	Exhaust Pipe	
6	1615 5664 00	8	Screw	
7	1310 4264 00	1	Muffler - Exhaust	
8	1310 1477 00	1	Clamp - Exhaust "2.25"	
9	1310 4163 00	1	Heat Shield	

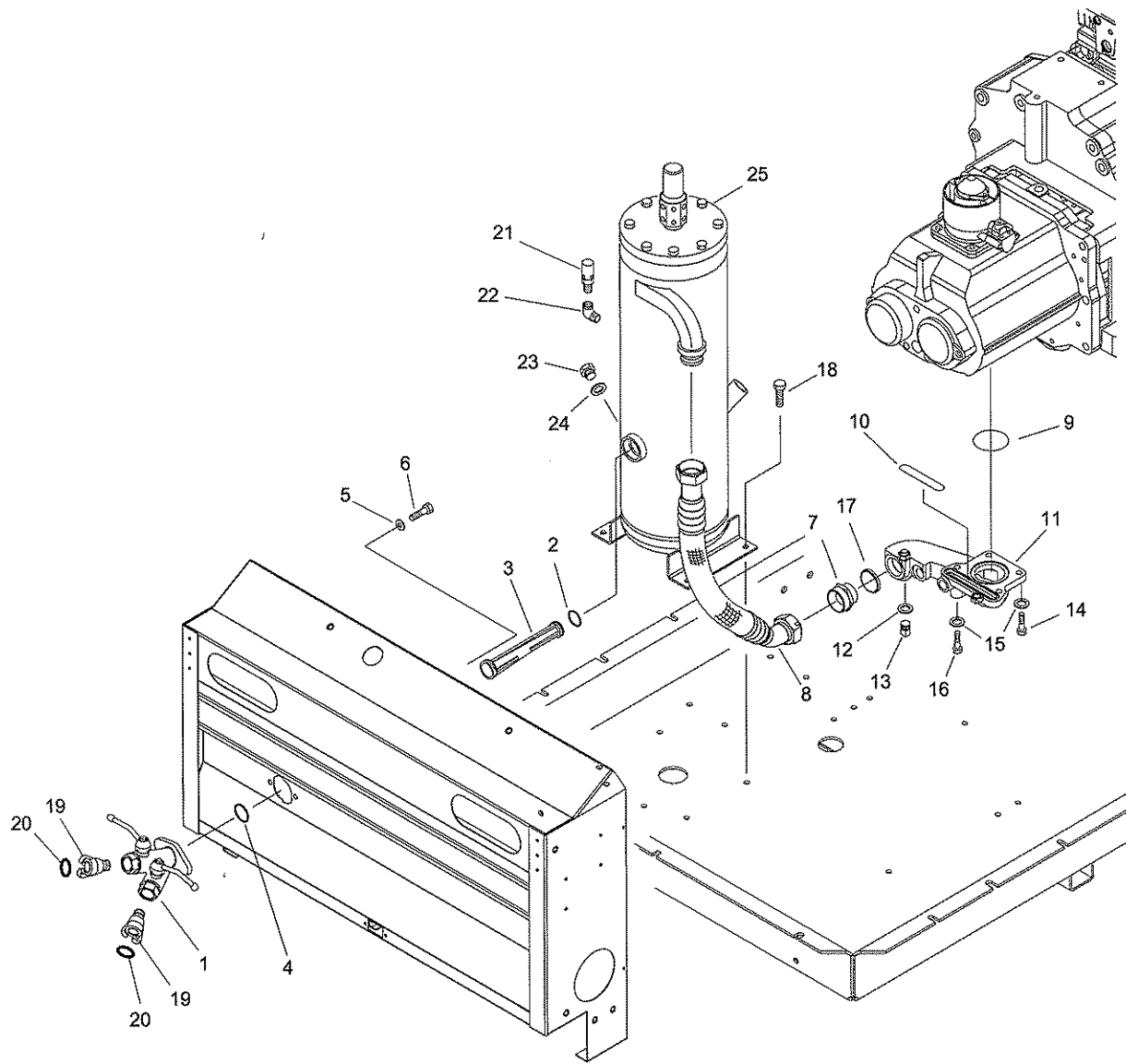
1310 9045 03 Rev. 00



## 5. Cooling System

Ref	Part number	Qty	Name	Remarks
1	1310 4237 00	1	Radiator/Oil Cooler	
2	1310 4239 00	1	Fan Spacer	
3	0211 1251 00	6	Screw	
4	0301 2321 00	6	Washer	
5	1310 0342 83	1	Fan Guard	
6	1615 7690 00	1	Ring Clamp	
7	1615 5664 00	4	Screw	
8	1310 0342 81	1	Fan	
9	1310 4249 00	1	Top Tank	
10	0347 6113 00	6	Hose Clamp	
11	0147 1247 03	4	Screw	
12	1619 2766 00	16	Screw	
13	1310 4261 00	1	Lower Radiator Hose Assembly	
14	1310 4281 00	1	Upper Radiator Pipe	
15	1615 5664 00	4	Screw	
16	0147 1363 03	4	Screw	
17	0301 2344 00	4	Washer	
18	1310 0342 89	1	Hose Clamp	
19	1310 0352 02	2	Hose Clamp	
20	1310 4270 00	2	Hose Sleeve	
21	1310 0304 17	3	Elbow	
22	1310 0323 84	4	Hose Clamp	
23	1310 0311 97	AR	Hose	
24	1310 0304 19	1	Adapter	
25	1310 4234 00	1	Panel	
26	1310 4235 00	1	Fan Box	

1310 9045 04Rev. 00

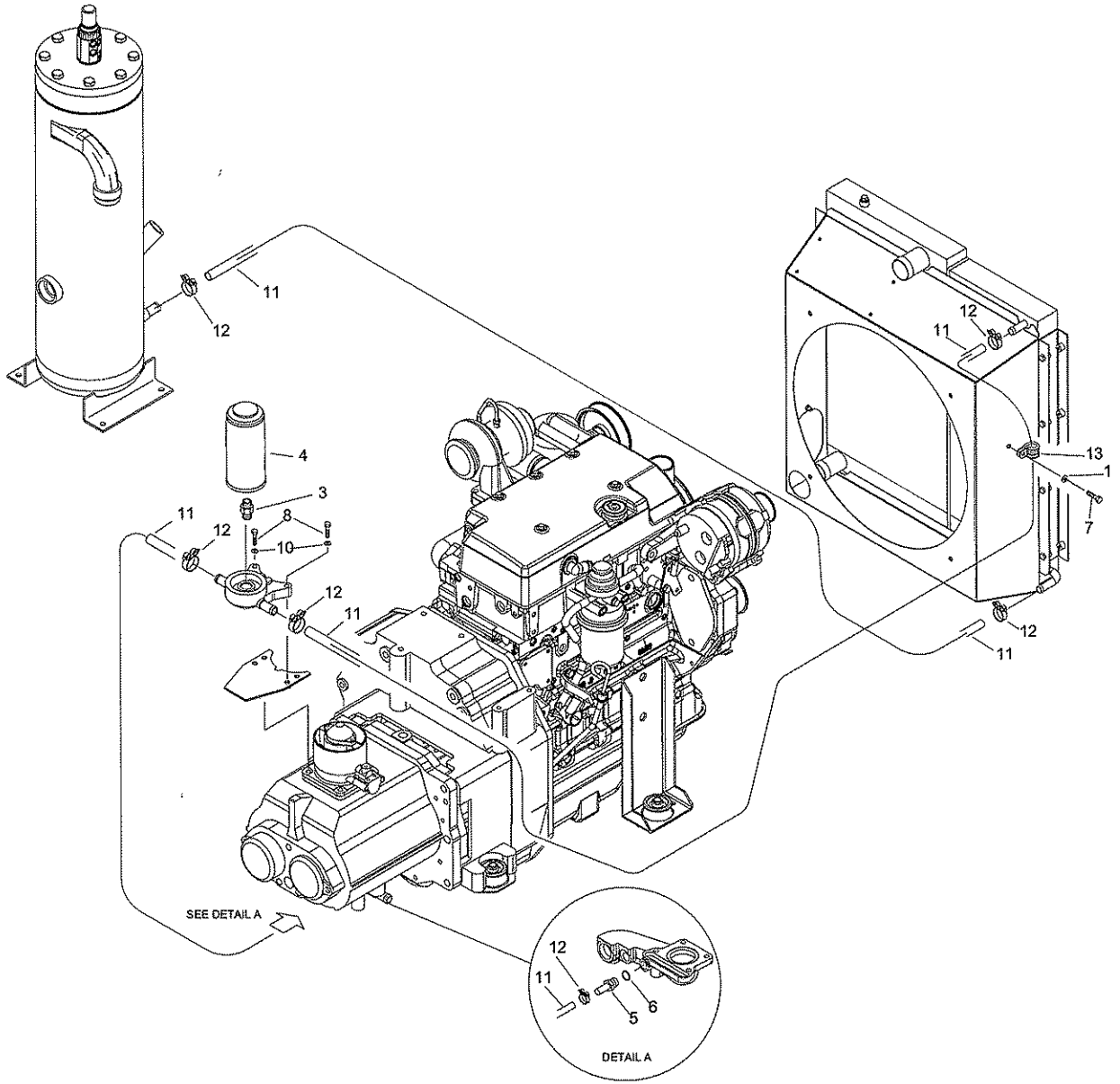




## 6. Air Outlet

Ref	Part number	Qty	Name	Remarks
1	1604 9951 80	1	Twin Ball Valve	
2	0663 3131 00	1	O-Ring	
3	1604 7943 01	1	Restrictor	
4	0663 3131 00	1	O-Ring	
5	0333 3227 00	2	Lockwasher	
6	0147 1323 03	2	Hexagon Bolt	
7	0571 0035 74	1	Nipple	
8	1310 4242 00	1	Hose	
9	0663 7137 00	1	O-Ring	
10	0663 7141 00	1	O-Ring	
11	1604 3980 81	1	Outlet Manifold	
12	0653 1062 00	1	Flat Gasket	
13	0686 3716 01	1	Plug	
14	0211 1364 00	3	Bolt M10	
15	0301 2344 00	4	Washer	
16	0211 1373 00	1	Bolt M10	
17	9125 6295 00	1	Gasket	
18	1619 2766 00	4	Screw	
19	1310 1365 00	2	Claw Coupling	
20	9747 6020 00	2	Rubber Gasket	
21	1310 0302 65	1	Valve-safety	
22	9710 5691 00	1	Elbow-pipe	
23	1615 5080 00	1	Plug	
24	0661 1000 29	1	Washer-seal	
25	1310 0301 92	1	Seperator Assembly	

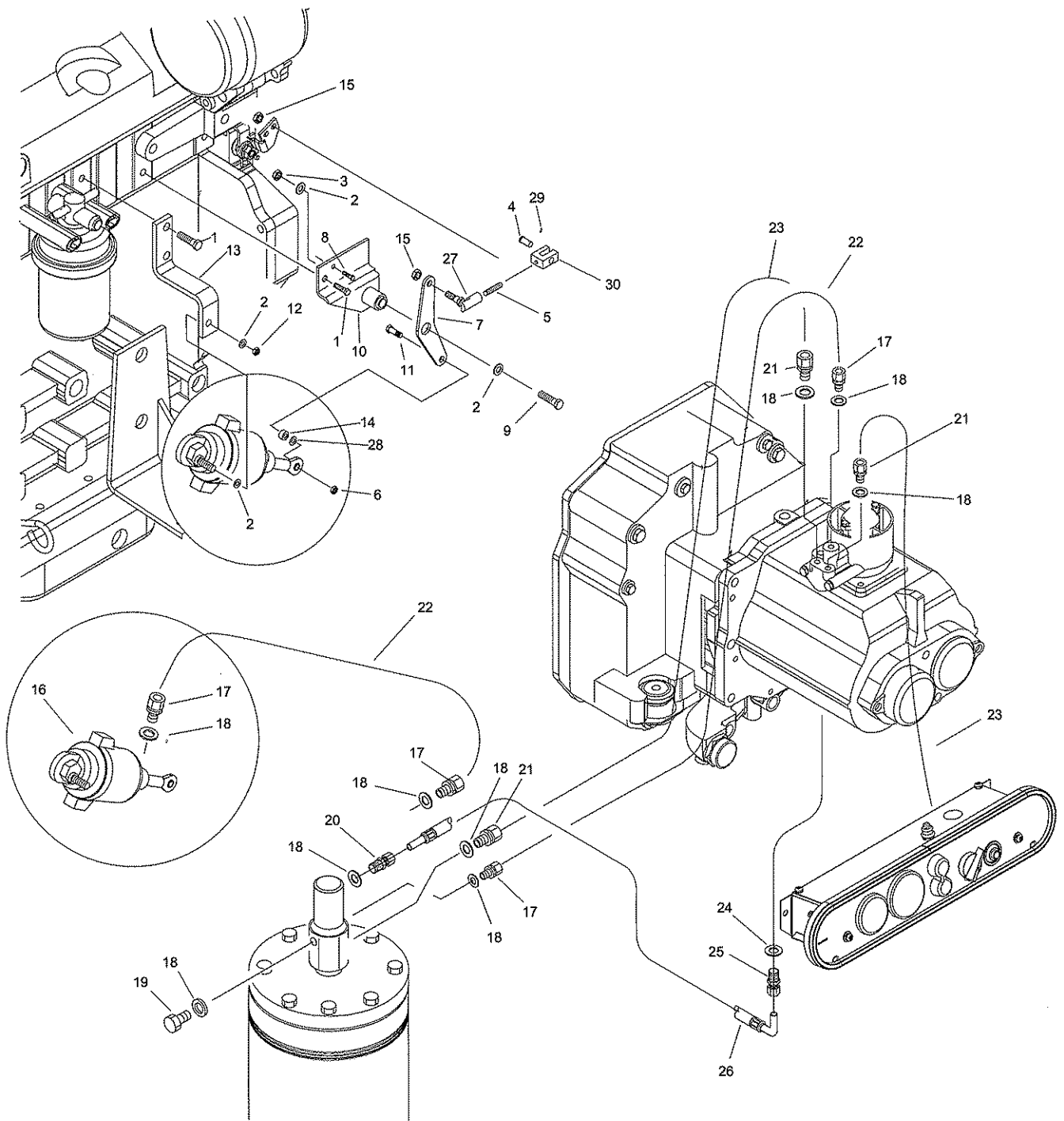
1310 9045 05 Rev. 00



## 7. Oil System

Ref	Part number	Qty	Name	Remarks
1	0300 8019 00	2	Washer-flat	
2	1615 7767 02	1	Housing-oil filter	
3	1619 3770 00	1	Nipple-hex	
4	1613 6105 00	1	Filter-oil	
5	1202 8660 00	1	Nipple	
6	0661 1000 27	1	Seal washer	
7	0147 1323 03	3	Screw	
8	0147 1329 03	2	Screw	
9	1310 4167 00	1	Bracket	
10	0301 2335 00	4	Washer-flat	
11	0072 8403 16	5m	Hose	
12	1202 8663 01	6	Clamp-hose	
13	1310 0342 89	2	Clamp-hose	
14	0346 1012 44	1	Clamp	

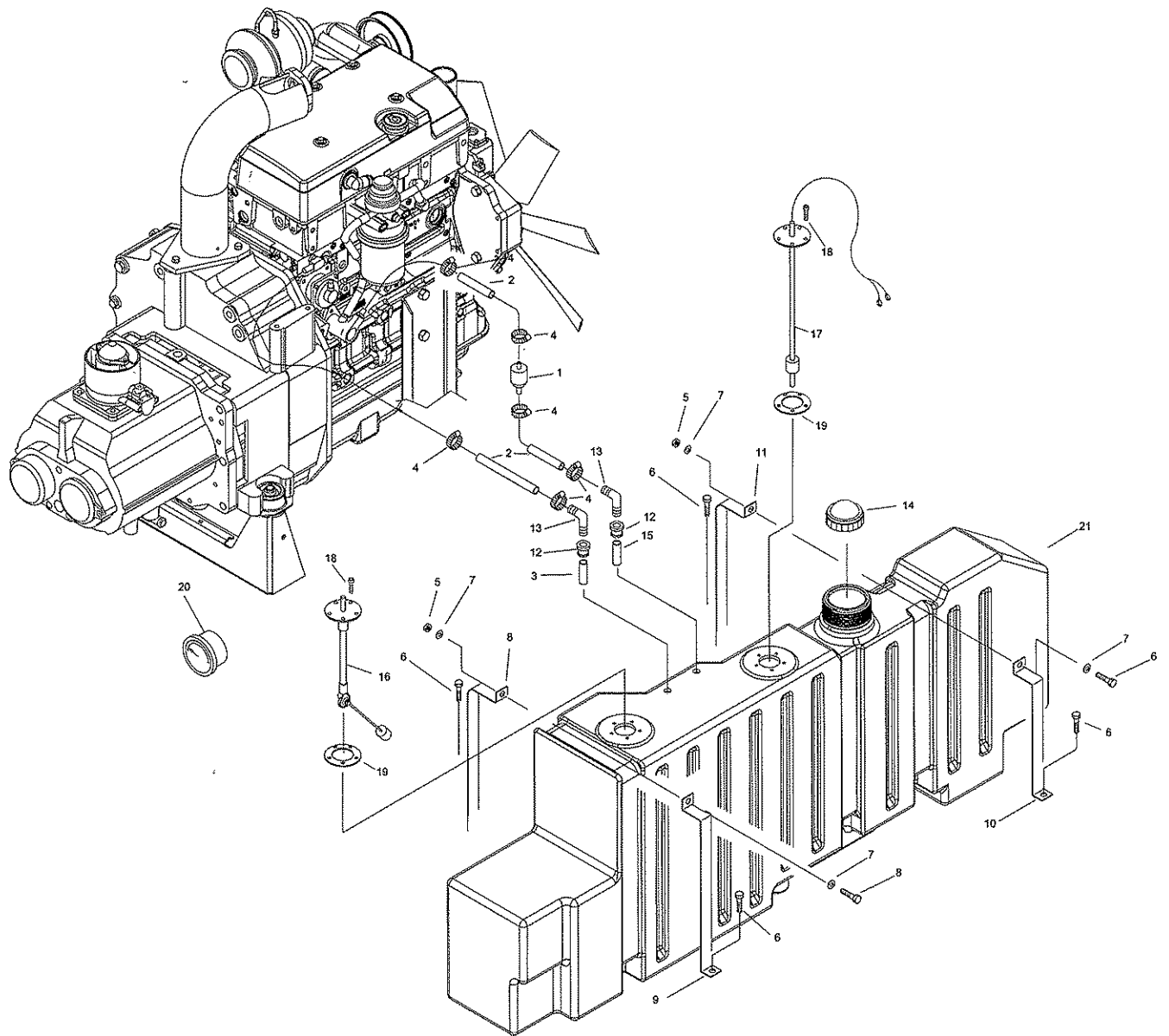
1310 9045 06 Rev. 00



## 8. Regulating System

Ref	Part number	Qty	Name	Remarks
1	0147 1322 03	3	Screw	
2	0301 2335 00	4	Washer	
3	0291 1110 00	1	Nut	
4	1310 0369 57	1	Clevis	
5	1310 0316 53	1	Threaded Rod	
6	0291 1108 00	1	Nut	
7	1310 0302 45	1	Lever Arm	
8	9710 5906 00	1	Screw-Self Tapping	
9	0147 1329 09	1	Screw	
10	1310 0302 46	1	Bracket	
11	0147 1250 03	1	Screw	
12	0291 1110 00	1	Nut	
13	1310 0301 61	1	Bracket	
14	0324 1130 00	1	Spacer	
15	NUT 00846	2	Nut	
16	1604 0321 80	1	Piston	
17	0581 0000 38	4	Coupling	
18	1310 0345 79	9	Gasket-flat	
19	0686 4201 03	1	Plug	
20	0581 0000 47	1	Coupling	
21	0581 0000 33	3	Coupling	
22	0070 6002 05	4m	Tube	
23	0070 6002 04	4m	Tube	
24	0661 1020 00	1	Gasket	
25	0581 0000 52	1	Coupling	
26	1310 0304 13	1	Hose Assembly	
27	1310 0316 52	1	Ball Socket, w/ Disconnect	
28	0301 2321 00	1	Washer-Flat	
29	1310 0369 56	1	Cotter Pin	
30	1310 0353 91	1	Clevis Pin	

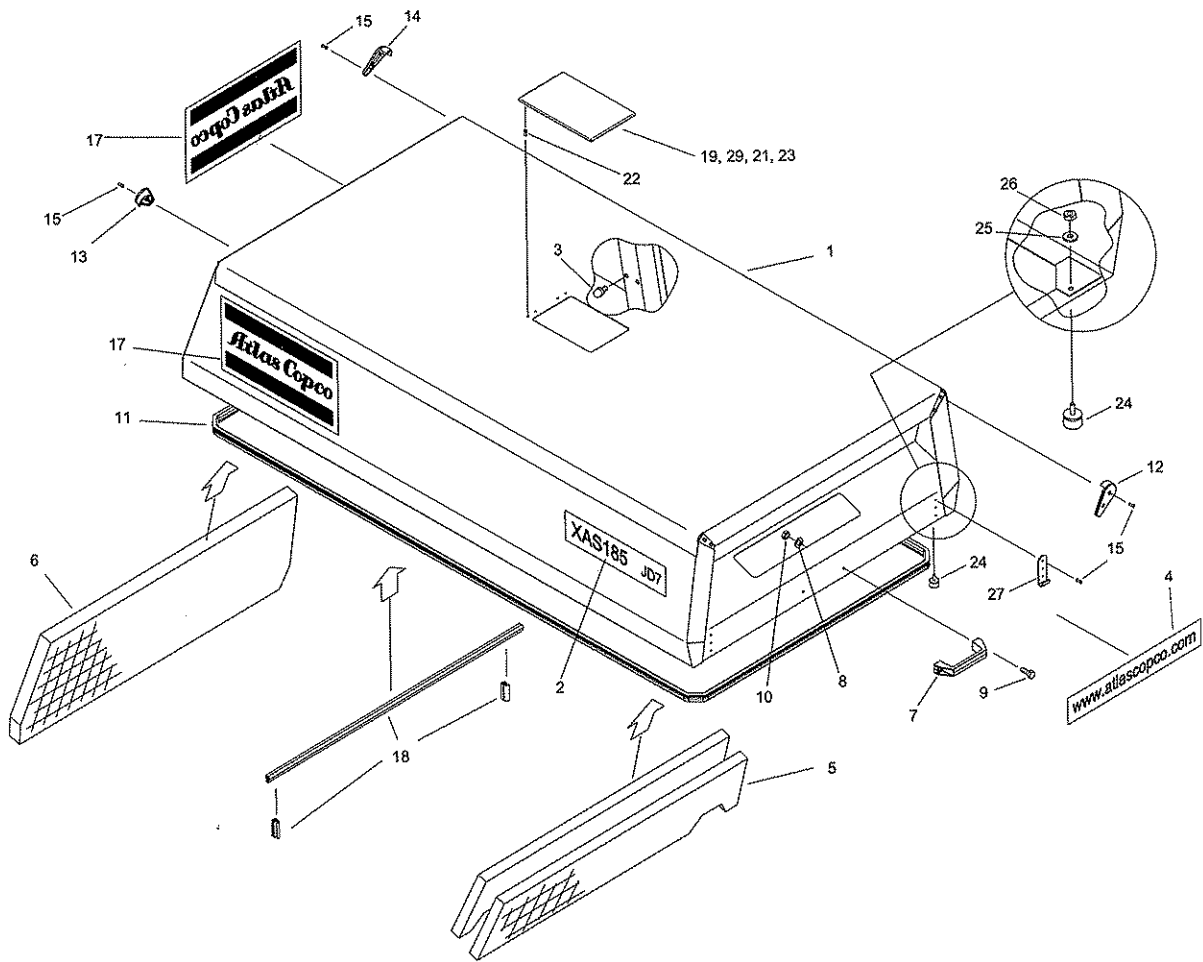
1310 9044 57 Rev. 00



## 9. Fuel System

Ref	Part number	Qty	Name	Remarks
1	1310 0315 80	1	Filter	
2	1310 0311 98	2Ft	Hose	
3	1310 0302 29	2Ft	Tube	
4	1310 0323 84	6	Clamp-hose	
5	0291 1110 00	2	Locknut	
6	0147 1323 03	6	Screw	
7	0301 2335 00	4	Washer-flat	
8	1310 4276 00	1	Strap	
9	1310 4277 00	1	Strap	
10	1310 4275 00	1	Strap	
11	1310 4278 00	1	Strap	
12	1310 0349 92	2	Grommet	
13	1310 0349 94	2	Elbow - Hose	
14	1310 0343 63	1	Cap	
15	1310 4259 00	1	Tube	
16	1310 4257 00	1	Sender - Fuel Level	
17	1310 4258 00	1	Switch - Low Liquid Level	
18	1310 0343 88	10	Screw - 10-24 x 0.5 Lg.	
19	1310 0327 02	2	Gasket	
20	1310 0317 97	1	Gauge - Fuel level	
21	1310 4149 00	1	Fueltank	

1310 9045 08 Rev. 00





## 10. Hood Assembly

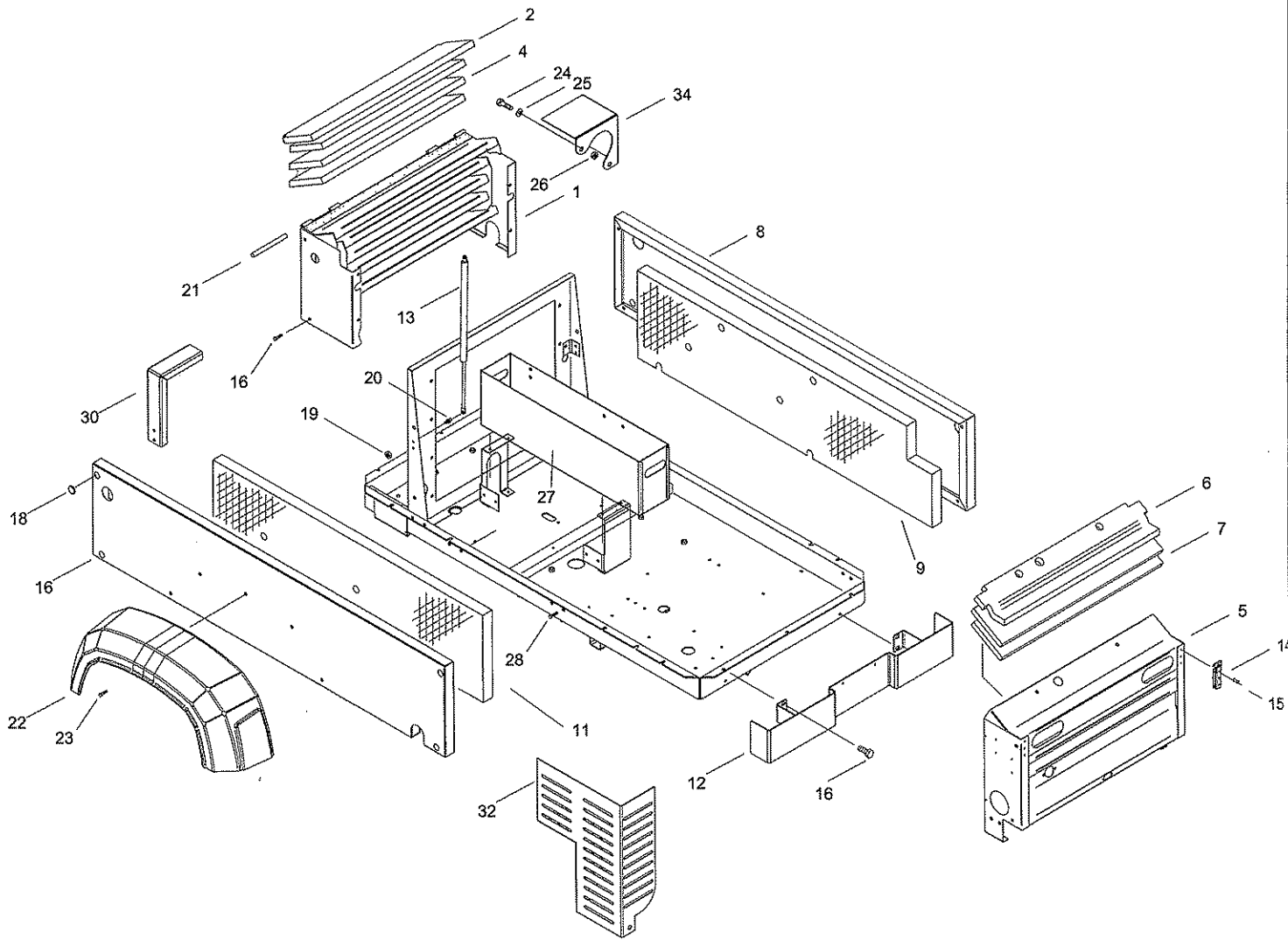
Ref	Note	Part number	Qty	Name	Remarks
1	1	1310 4114 21	1	Hood Assembly	
2		1310 4240 00	2	Label	
3		1310 0327 78	2	Ball Stud	
4		1310 0357 17	1	Label	
5		1310 4124 00	2	Foam Insulation	
6		1310 4122 00	1	Foam Insualtion	
7		1202 8673 00	1	Handle	
8		0333 2121 00	2	Washer	
9		0147 1246 03	2	Screw	
10		0266 2108 00	2	Nut	
11		1604 4317 00	AR	Seal	
12		1604 4056 00	2	Protector	
13		1604 4062 00	1	Protector	
14		1604 4057 00	1	Protector	
15		1310 0327 87	12	Rivet	
16		0690 1132 00	2	Label	
17		0690 1140 00	1	Label	
18		1619 2665 00	AR	Seal	
19	1	1310 4125 80	1	Access Door Assembly	
20	*	1310 4125 00	1	Door	
21	*	1613 6650 01	1	Lock	
22	*	0129 3172 01	4	Rivet	
23	*	1604 4317 00	1	Seal	
24		16041869 00	2	Bumper	
25		0333 2121 00	2	Washer	
26		0266 2108 00	2	Nut	
27		1604 6733 00	2	Catch	

1310 9054 16 Rev. 00

1) Standard color is yellow °

° For availability of other colors consult an Atlas Copco sales representative.

\* Contained in the assembly.



## 11. Body Work Steel Units

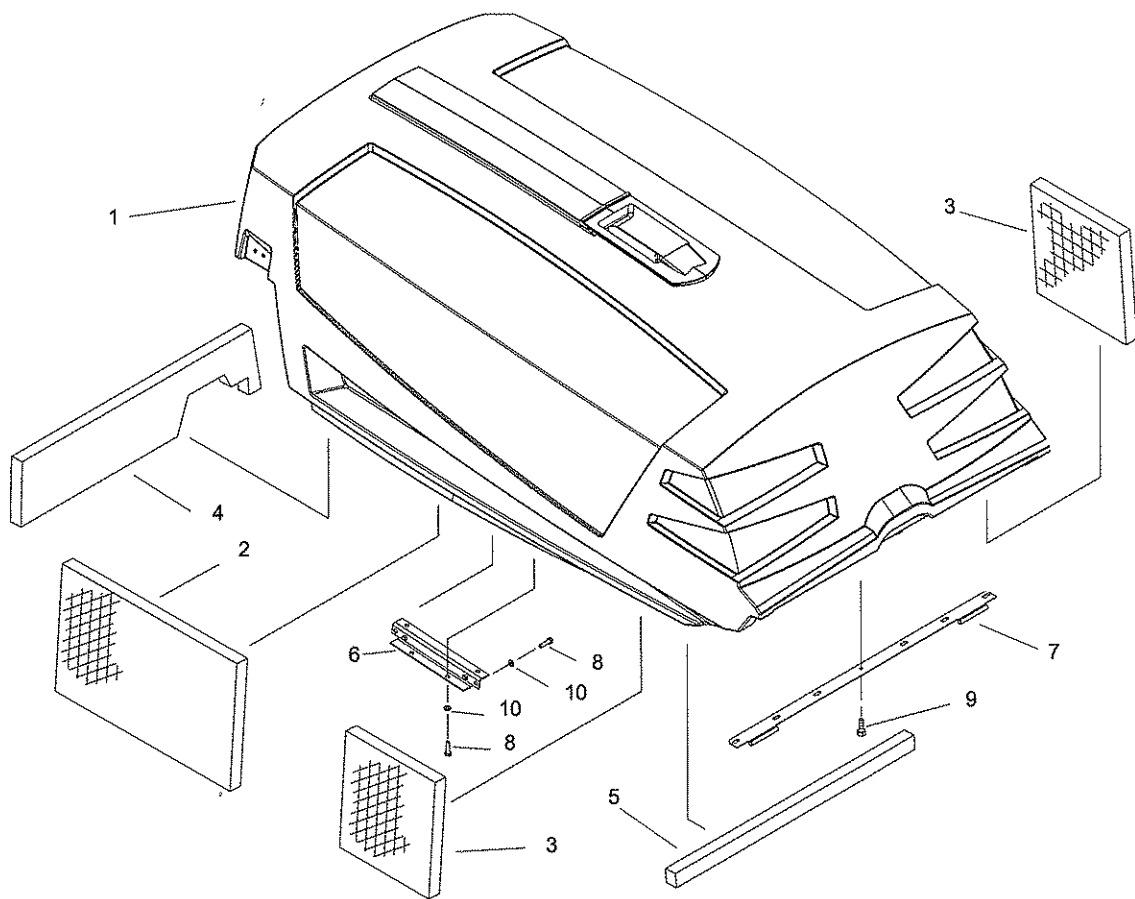
Ref	Part number	Qty	Name	Remarks
-	1310 4103 29	1	Front Baffle Assembly	1
1	1310 4103 00	1	Baffle	*
2	1310 4104 00	1	Foam Insulation	*
3	1604 3423 00	2	Screw	*
4	1310 4108 00	3	Foam Insulation	*
-	1310 4109 29	1	Rear Baffle Assembly	1
5	1310 4109 00	1	Rear Baffle	*
6	1310 4110 00	1	Foam Insulation	*
7	1310 4144 00	2	Foam Insulation	*
-	1310 4112 29	1	Side Panel Assembly	1
8	1310 4112 00	1	Panel	*
9	1310 4113 00	1	Foam Insulation	*
-	1310 4126 29	1	Side Panel Assembly	1
10	1310 4126 00	1	Side Panel	*
11	1310 4127 00	1	Foam Insulation	*
12	1310 4243 00	1	Bumper	
13	1310 4262 00	2	Gas Strut	
14	1604 6686 00	2	Latch	
15	1310 0327 87	6	Rivet	
16	1615 5664 00	28	Screw	
17	1619 2766 00	8	Screw	
18	1604 3858 00	8	Plug	
19	0292 1305 00	2	Locknut	
20	1310 0327 78	2	Ball Stud	
21	1605 0025 00	2	Hinge Pin	
22	1310 4148 00	2	Fender	
23	1619 2766 00	10	Screw	
24	01471329 03	2	Screw	
25	02911110 00	2	Nut	
26	03012335 00	2	Washer	
27	1310 4253 00	1	Toolbox	
28	1615 5664 00	8	Screw	
29	1619 2665 00	4	Screw	
30	1310 0455 00	1	Guard	
31	1619 2766 00	2	Screw	
32	1310 4163 00	1	Heat Shield	
33	1619 2766 00	2	Screw	
34	1310 4268 00	1	Guard	

1310 9054 09 Rev. 00

1) Standard color is grey<sup>o</sup>

<sup>o</sup> For availability of other colors consult an Atlas Copco sales representative.

\* Contained in the assembly.



## 12. Hood Assembly PE Version

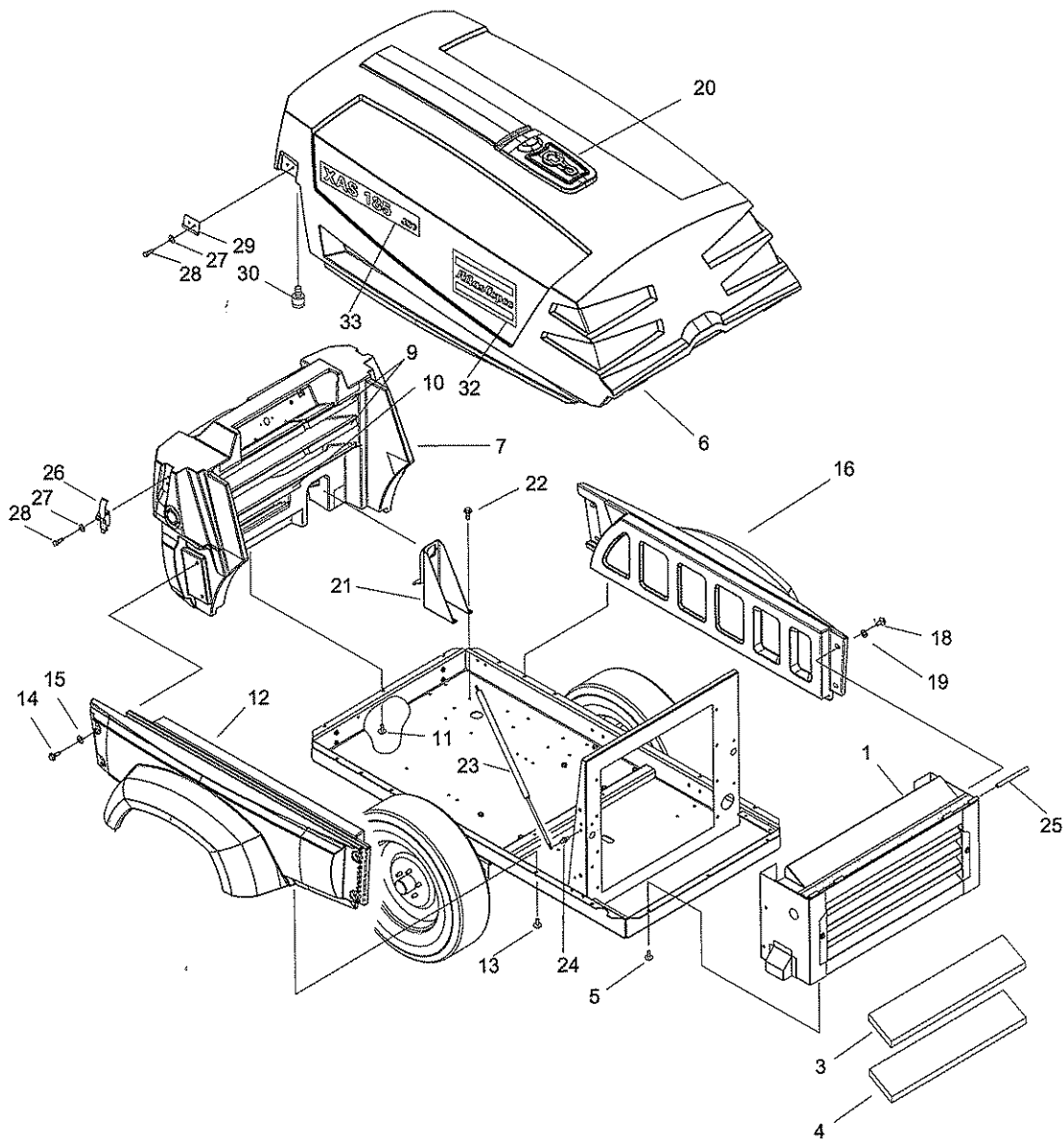
Ref	Part number	Qty	Name	Remarks
1	1310 4222 00	1	Hood	*
2	1310 4161 00	1	Foam Insulation	*
3	1310 4162 00	1	Foam Insulation	*
4	1310 4160 00	1	Foam Insulation	*
5	1310 4168 00	1	Foam Insulation	*
6	1310 4159 00	2	Bracket	*
7	1310 4158 00	1	Hinge	*
8	01471246 03	12	Screw	*
9	1615 5664 00	7	Screw	*
10	0301 2321 00	12	Washer	*

1310 9045 18 Rev. 00

- 1) Standard color is grey<sup>o</sup>
- 2) Standard color is yellow<sup>o</sup>

<sup>o</sup> For availability of other colors consult an Atlas Copco sales representative.

\* Contained in the assembly.



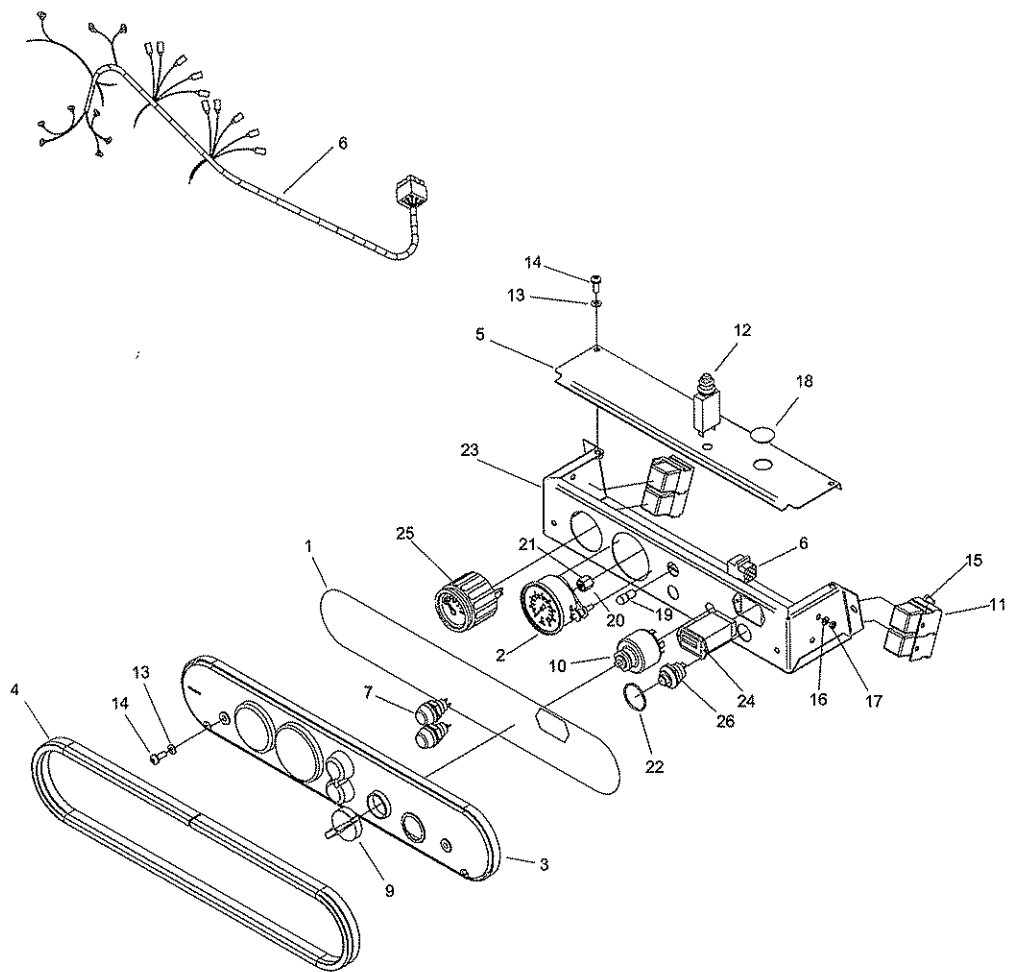
### 13. Body Work PE Units

Ref	Part number	Qty	Name	Remarks
1	1310 4157 29	1	Front Baffle Assembly	1
2	1310 4157 00	1	Baffle	*
3	1310 4104 00	1	Foam Insulation	*
4	1310 4108 00	2	Foam Insualation	*
5	1615 5664 00	9	Screw	
6	1310 4222 80	1	Hood Assembly	2
7	1310 4222 00	1	Hood	*
8	1310 4273 00	1	Foam Insulation	*
9	1310 4161 00	1	Foam Insulation	*
10	1310 4162 00	1	Foam Insulation	*
11	1310 4160 00	1	Foam Insulation	*
12	1310 4168 00	1	Foam Insulation	*
13	1310 4159 00	2	Bracket	*
14	1310 4158 00	1	Hinge	*
15	1619 2766 00	12	Screw	*
16	1615 5664 00	7	Screw	*
17	1310 4223 80	1	Rear Baffle Assembly	1
18	1310 4223 00	1	Rear Baffle	*
19	1310 4266 00	2	Foam Insualtion	*
20	1310 4273 00	1	Foam Insulation	*
21	1615 5664 00	7	Screw	
21	1310 4224 00	1	Mudgaurd	1
22	1615 5664 00	2	Screw	
23	01471328 03	4	Screw	
24	0300 8019 00	4	Washer	
25	1310 4225 00	1	Mudgaurd	1
26	1615 5664 00	2	Screw	
27	0147 1328 03	4	Screw	
28	0300 8019 00	4	Washer	
29	1310 4226 00	1	Cover	1
30	1310 4147 00	1	Outlet Valve Bracket	
31	1619 2766 00	4	Screw	
32	1604 6457 00	2	Gas Strut	
33	1310 0327 78	4	Ball Stud	
34	1605 0025 00	2	Hinge Pin	
35	1604 6276 00	2	Latch	
36	03012321 00	8	Washer	
37	01471244 03	8	Screw	
38	1604 6275 00	2	Catch	
39	1604 1869 00	2	Bumper	
40	1310 0369 54	1	Label – Internet	
41	0690 1132 00	2	Label - Logo	
42	1310 4240 00	2	Label – Model Designation	

1310 9045 17 Rev. 00

- 1) Standard color is grey<sup>o</sup>
- 2) Standard color is yellow<sup>o</sup>

<sup>o</sup> For availability of other colors consult an Atlas Copco sales representative.  
 \* Contained in the assembly.

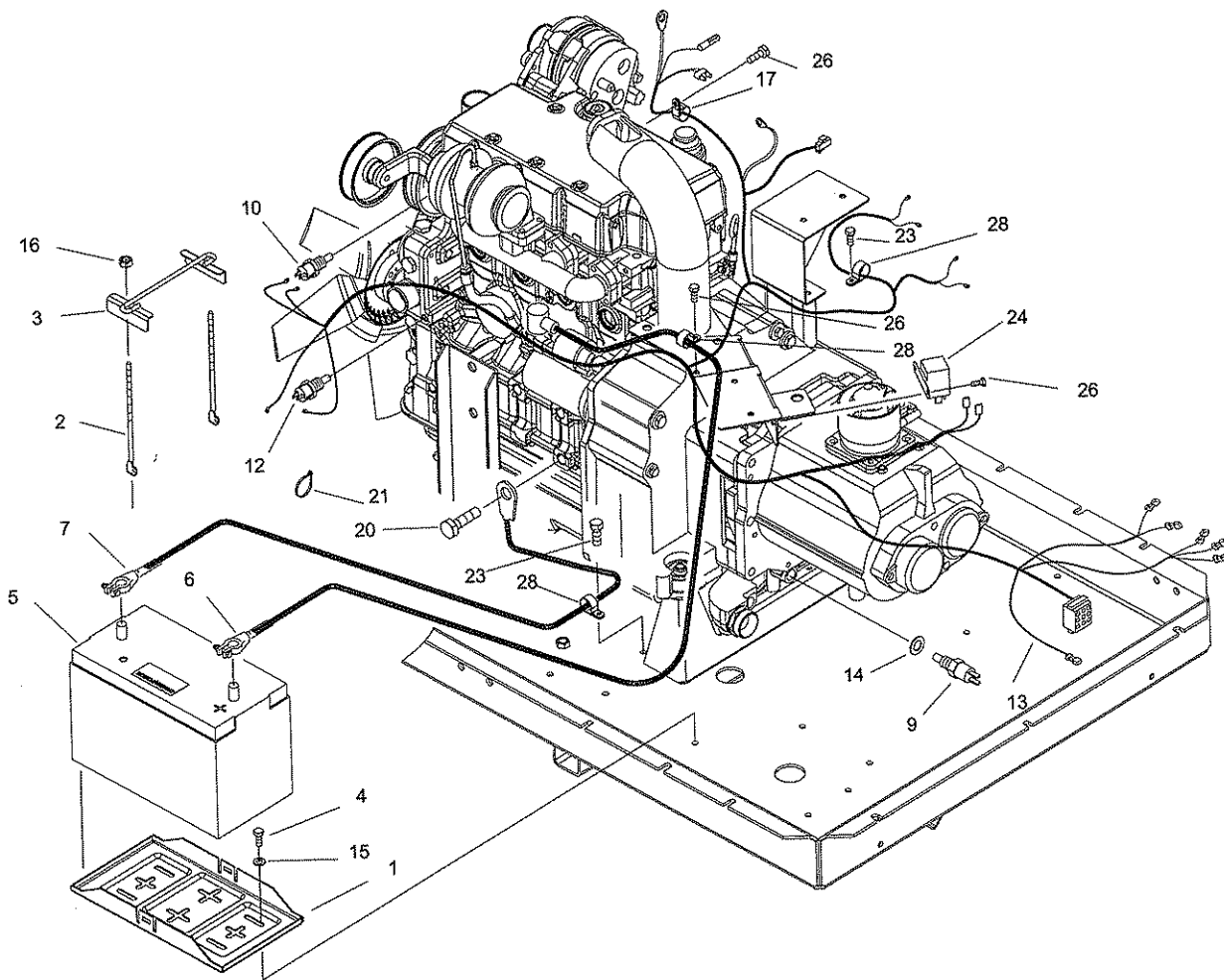




## 14. Control Panel

Ref	Part number	Qty	Name	Remarks
-	1310 4263 80	1	Control Panel Assembly	
1	1310 4265 00	1	Label	
2	1604 4017 00	1	Pressure Gauge	
3	1604 4028 00	1	Cover	
4	1202 6584 00	1	Seal	
5	1604 4039 01	1	Cover	
6	1604 4068 00	1	Wire Harness	
7	1089 0312 11	2	Lampholder	
9	1089 0608 04	1	Button	
10	1089 0608 03	1	Switch	
11	1089 0341 01	4	Relay	
12	1089 9206 31	1	Circuit Breaker	
13	0301 2321 00	4	Washer	
14	0226 0305 42	4	Nut	
15	0147 1249 03	4	Bolt	
16	0301 2318 00	4	Washer	
17	0261 2107 00	4	Nut	
18	0686 9252 69	1	Plug	
19	1091 0168 00	2	Bulb	
20	0584 2310 01	1	Compression Nut	
21	0584 0080 09	1	Connector	
22	0663 9095 00	1	O-ring	
23	1310 4263 00	1	Control Panel bracket	
24	1089 9420 01	1	Hourmeter	
25	1310 0317 97	1	Fuel Gauge	
26	1089 9326 01	1	Pushbutton	

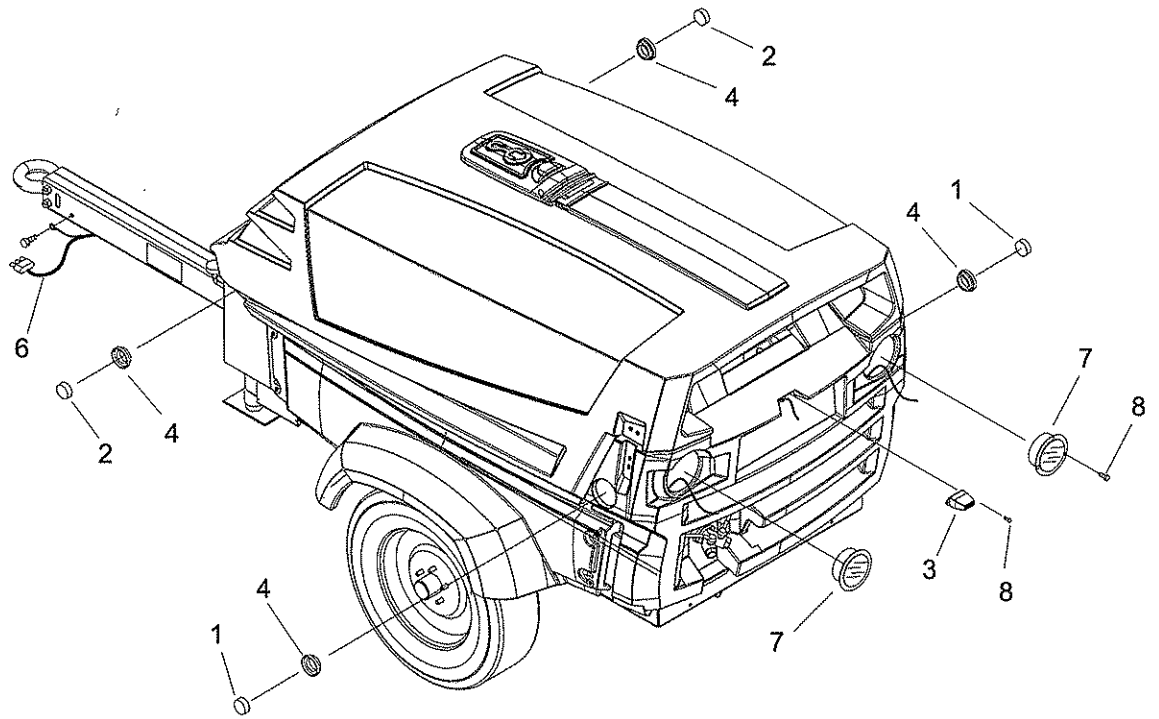
1310 9045 11 Rev. 00



## 15. Electrical System

Ref	Part number	Qty	Name	Remarks
1	1310 0311 65	1	Tray-battery	
2	1310 0311 67	2	Bolt-j	
3	1310 0311 66	1	Clamp-battery	
4	9710 5899 01	2	Bolt	
5	1310 0310 89	1	Battery	
6	1310 4247 00	1	Cable-battery (+)	
7	1310 0333 25	1	Cable-battery (-)	
8	1310 0345 46	1	Strap	
9	1615 7831 02	1	Oil Temperature Switch	
10	1310 0350 59	1	Coolant Temperature Switch	
11	0333 2243 00	1	Washer-spring	
12	1310 0330 41	1	Oil Pressure Switch	
13	1310 4244 00	1	Harness-wiring	
14	0653 1124 00	1	Gasket	
15	0333 2225 00	2	Washer	
16	0268 3205 00	2	Nut	
17	0147 1320 03	1	Screw	
18	1310 0363 91	1	Insulator	
19	0333 2243 00	1	Lockwasher	
20	0147 1476 03	1	Screw	
21	1088 1301 02	AR	Wire Ties	
22	0301 2321 00	4	Washer	
23	0147 1249 03	2	Screw	
24	1089 0585 01	1	Relay	
25	1615 5664 00	1	Screw	
26	0147 1323 03	3	Screw	
27	0301 2335 00	3	Washer	
28	1310 0365 57	3	Clamp	

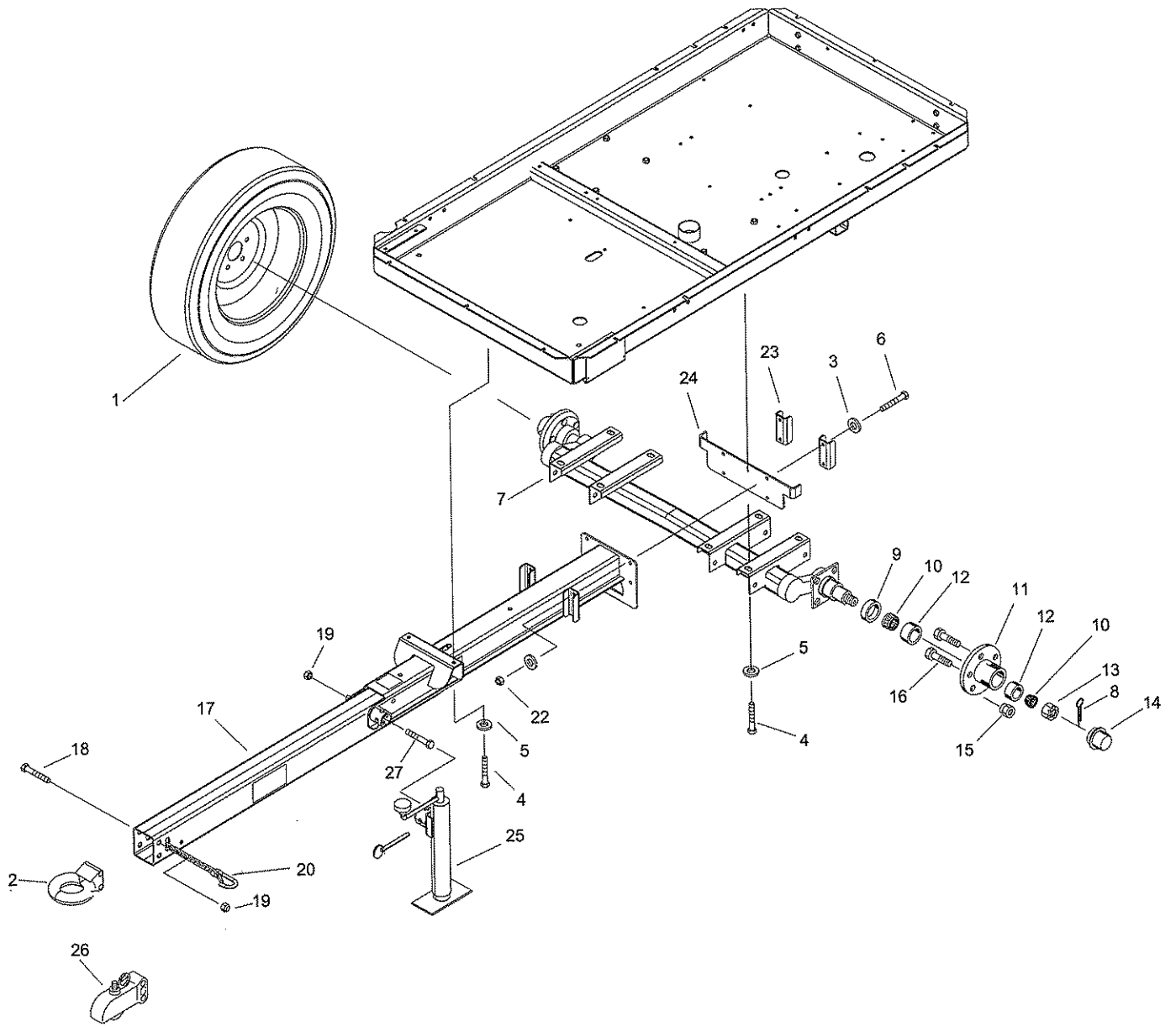
1310 9045 12 Rev 0



## 16. Road Lighting

Ref	Part number	Qty	Name	Remarks
1	1310 4142 00	2	Red Reflector	
2	1310 4143 00	2	Yellow Reflector	
3	1310 0369 71	1	License Plate Lamp	
4	1310 4155 00	4	Grommet	
5	1088 1301 03	6	Wire Tie	
6	1310 4164 00	1	Wire Harness	
7	1310 4166 00	2	Rear Tail Lights – PE Version Only	
8	1310 0369 58	8	Screw	
9	1310 0302 47	2	Rear Tail Lights – Steel Version Only	
10	1310 0302 93	2	Grommet for Rear Tail Lights – Steel Version Only	

1310 9045 13 Rev. 00



## 17. Drawbar, Axle Assembly

Ref	Note	Part number	Qty	Name	Remarks
1		1310 0303 94	2	Wheel-tire assembly	
2		1310 0314 51	1	Lunette Eye	
3		1310 030 84	8	Washer	
4		0147 1401 03	10	Screw	
5		0301 2358 00	10	Washer-flat	
6		1310 0303 91	4	Screw	
7		1310 4135 00	1	Axle Assembly	
8	*	1310 0341 07	2	Cotter Pin	
9	*	1310 0302 15	2	Grease Seal	
10	*	1310 0302 16	4	Bearing Cone	
11	*	1310 0302 17	2	Hub	
12	*	1310 0224 00	4	Bearing Cup	
13	*	1310 0340 93	2	Spindle Nut	
14	*	1310 0343 87	2	Grease Dust Cap	
15	*	1310 0341 08	10	Lug Nut	
16	*	1310 0302 18	10	Stud	
17		1310 4223 00	1	Drawbar Assembly	
18	*	0144 4000 17	2	Screw - 5/8-11 x 4.5" L	
19	*	0292 1310 00	4	Lock Nut	
20	*	1310 0359 96	2	Chain Assembly	
21	*	SCR01342	1	Screw - 3/8-16 x 3.75" L	
22		1310 0303 83	4	Nut	
23		1310 0400 09	1	Bracket	
24		1310 0400 11	4	Bracket	
25		1310 0340 12	1	Jackstand	
26		1310 0342 11	1	2" Ball Hitch	Optional
27		0144 3461 03	2	Screw	

1310 9045 14 Rev. 00

\* Included in assembly.

**Tampering with noise control system prohibited.**  
Federal law prohibits the following acts or the causing thereof:

(1) The removal or tampering with any part of the noise control system.  
 (2) The use of any part of the noise control system in a manner not intended by the manufacturer.  
 (3) The use of any part of the noise control system in a manner that is likely to result in the emission of noise in excess of the limits specified in the manufacturer's instructions.

Any person who is found to be in violation of this law shall be liable for the civil penalties provided in this law.

**Compressor noise emission control information**  
The compressor conforms to U.S. E.P.A. regulations for noise emissions applicable to portable air-compressors.

The bearing label on the housing provides the following information:

(A) The amount of sound power level (SPL) in dBA at 10 feet.  
 (B) The amount of sound power level (SPL) in dBA at 3 feet.  
 (C) The amount of sound power level (SPL) in dBA at 1 foot.

**RECOMMENDED OILS**

**GENUINE PARTS**

**TIRE AND LOADING INFORMATION**

**CIRCUIT BREAKER RESET**

**WARNING**  
DIESEL

**TIE DOWN HERE**

**WARNING**  
CAUTION  
DANGER  
DANGER

**CAUTION**  
SAFETY METHOD

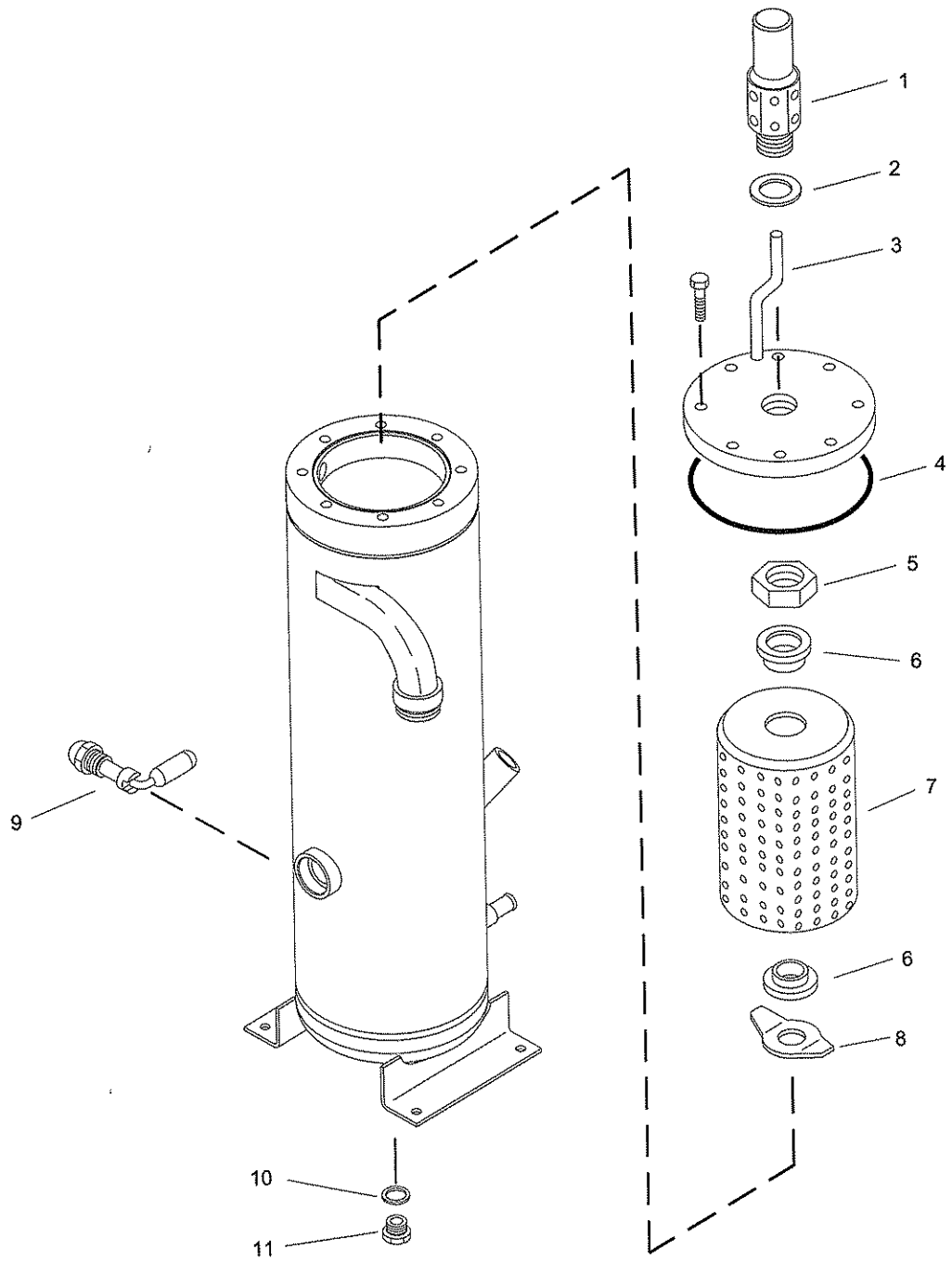
**10W 40 OIL**

**CAUTION**  
SAFETY METHOD



18. Decals

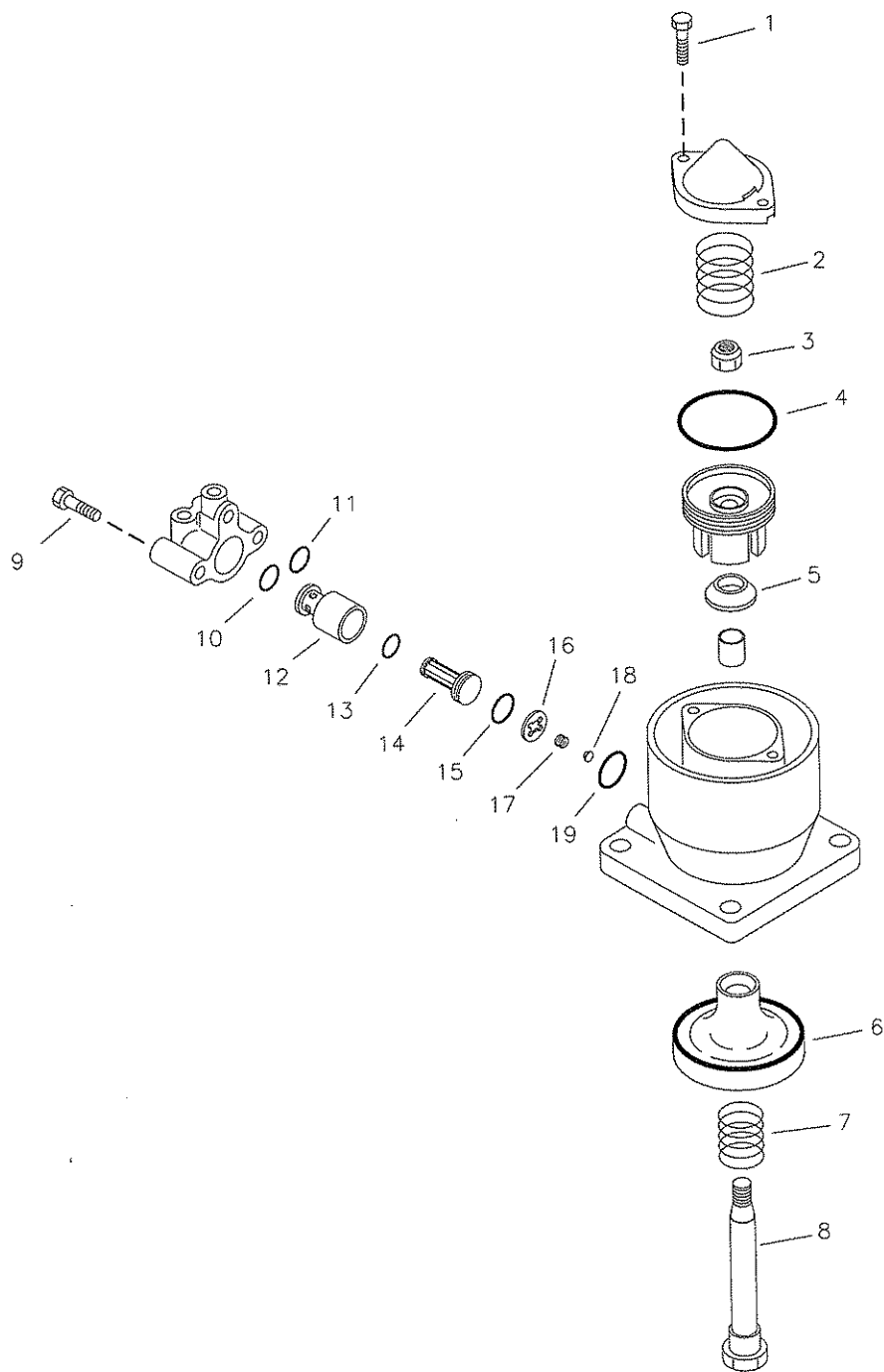
Ref	Part number	Qty	Name	Remarks
1	1310 4156 00	1	Label Sheet	
2	1310 0303 87	1	Label Sheet	



## 19. Air Receiver

Ref	Part number	Qty	Name	Remarks
-	1310 0301 92	1	Complete Air Receiver	
1	1615 7664 80	1	Reg. Valve Assembly	
2	0661 1104 90	1	Seal Washer	
3	1615 9437 00	1	Tube	
4	0663 7151 00	1	O-Ring	
5	0623 2106 03	1	Nut	
6	1615 7695 00	2	Seal	
7		1	Element - See Service Kit	
8	1615 7697 01	1	Retainer	
9	1616 5108 00	1	Level Gauge	
10	0661 1000 26	1	Seal Washer	
11	0686 4203 00	1	Hexagon Plug	

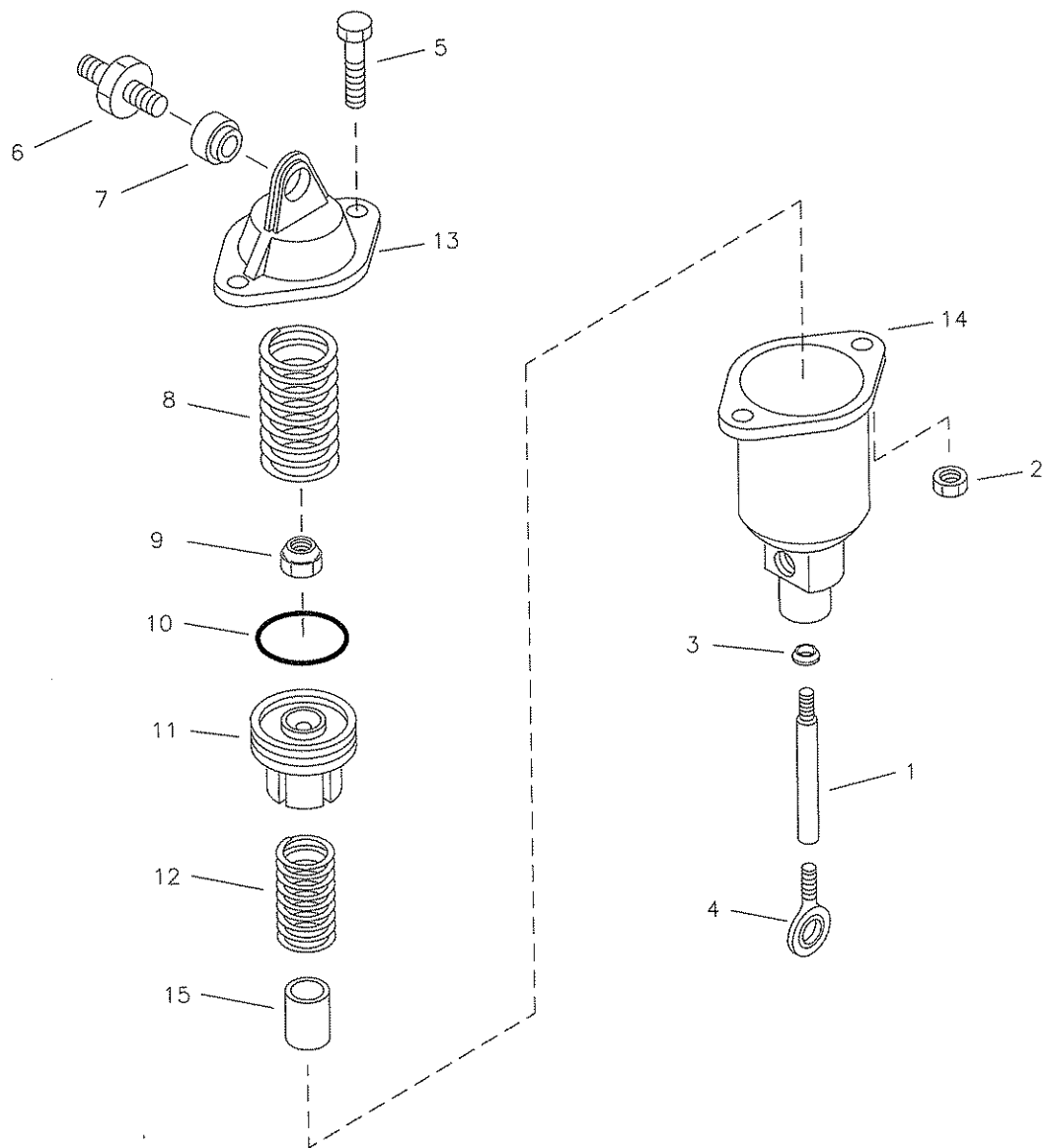
1310 9044 82 Rev. 00



## 20. Unloader Valve

Ref	Part number	Qty	Name	Remarks
-	1615 7667 82	1	Complete Unloader	
1	0147 1251 12	2	Hexagon Bolt	
2	1615 7672 00	1	Spring	
3	0291 1110 00	1	Locknut	
4	0665 0999 54	1	Piston Seal	
5		1	Wiper - See Service Kit	
6		1	Valve - See Service Kit	
7		1	Spring - See Service Kit	
8	1615 8757 00	1	Piston Rod	
9	0147 1252 12	2	Hexagon Bolt	
10		1	O-Ring - See Service Kit	
11		1	O-Ring - See Service Kit	
12	1615 8345 01	1	Bushing	
13		1	O-Ring- See Service Kit	
14	1615 7673 00	1	Valve	
15		1	O-Ring - See Service Kit	
16	1315 8346 00	1	Retainer	
17		1	Spring - See Service Kit	
18		1	Valve - See Service Kit	
19		1	O-Ring - See Service Kit	

1310 9042 45 Rev. 00

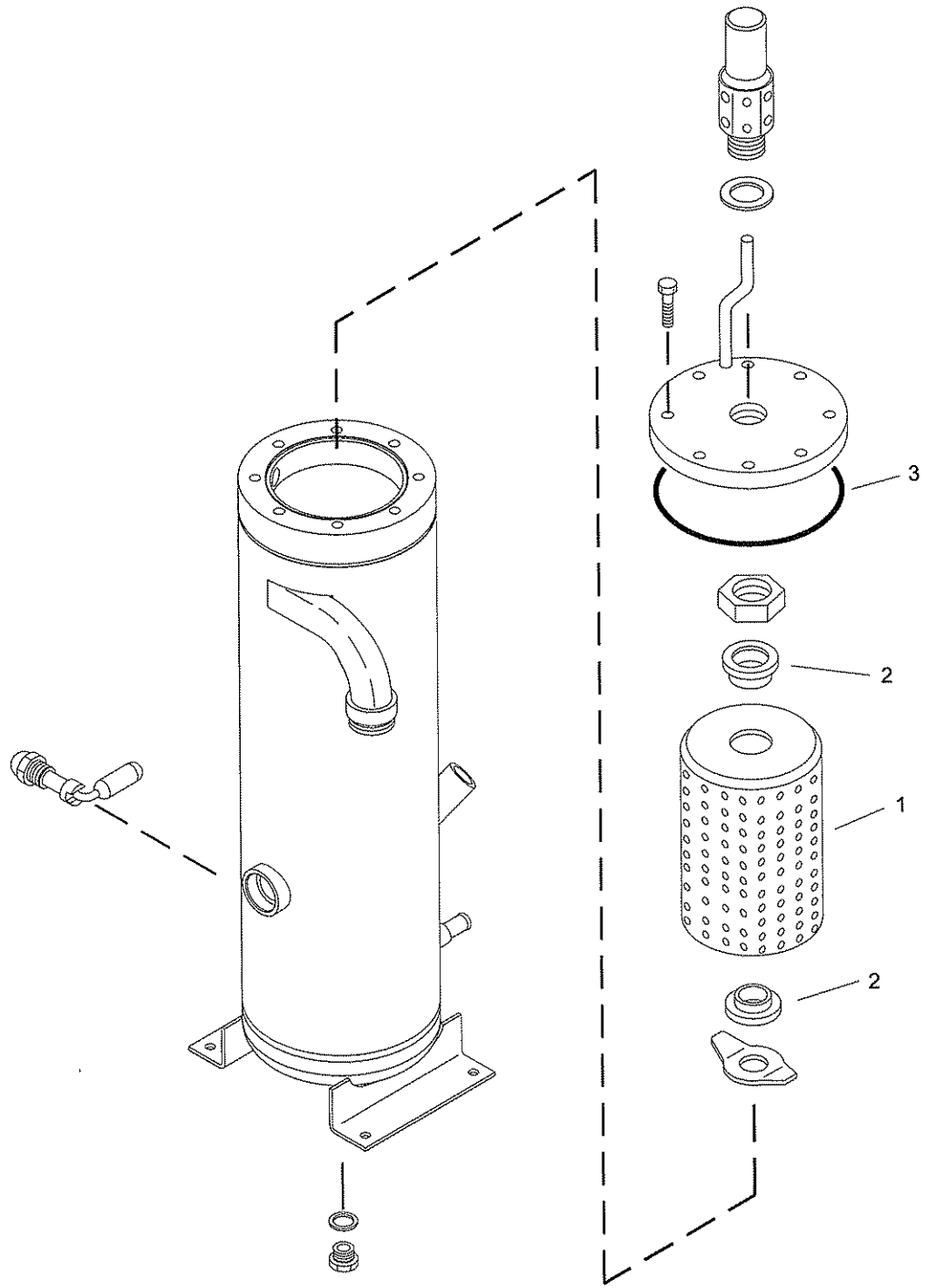


## 21. Actuating Valve Assembly

Ref	Part number	Qty	Name	Remarks
-	1604 0321 80	1	Complete Actuating Unit	
1	1615 8756 01	1	Piston Rod	
2	0266 2108 00	2	Nut	
3		1	Wiper - See Service Kit	1)
4	1615 9770 00	1	Bearing	
5	0147 1252 12	2	Hexagon Bolt	
6	1615 8382 00	1	Adaptor	
7	0501 0007 00	1	Bearing	
8	1615 8369 00	1	Spring	
9	0291 1110 00	2	Locknut	
10		1	Piston Seal - See Service Kit	1)
11	1615 8755 00	1	Piston	
12	2252 0489 00	1	Spring	
13	1615 8373 02	1	Cover	
14	1604 0321 00	1	Housing	
15	0500 4510 31	1	Plain bearing	

1) Included in the speed regulator service kit.

1310 9042 53 Rev. 03

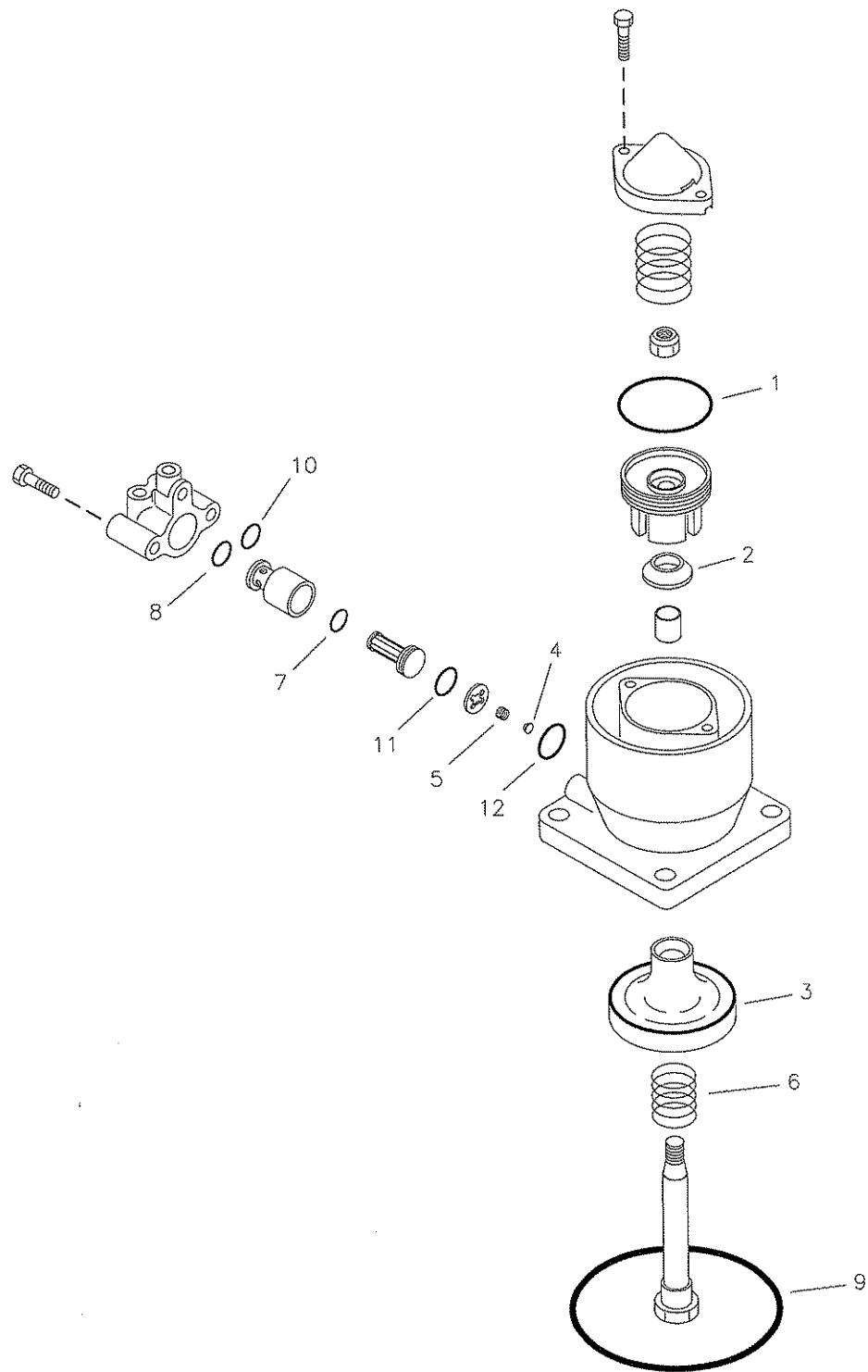




## 22. Air Receiver Service Kit

Ref	Part number	Qty	Name	Remarks
-	2911 0068 00	1	Oil Separator Kit	
1		1	Oil Separator Element	
2		2	Seal Ring	
3		1	O-Ring	

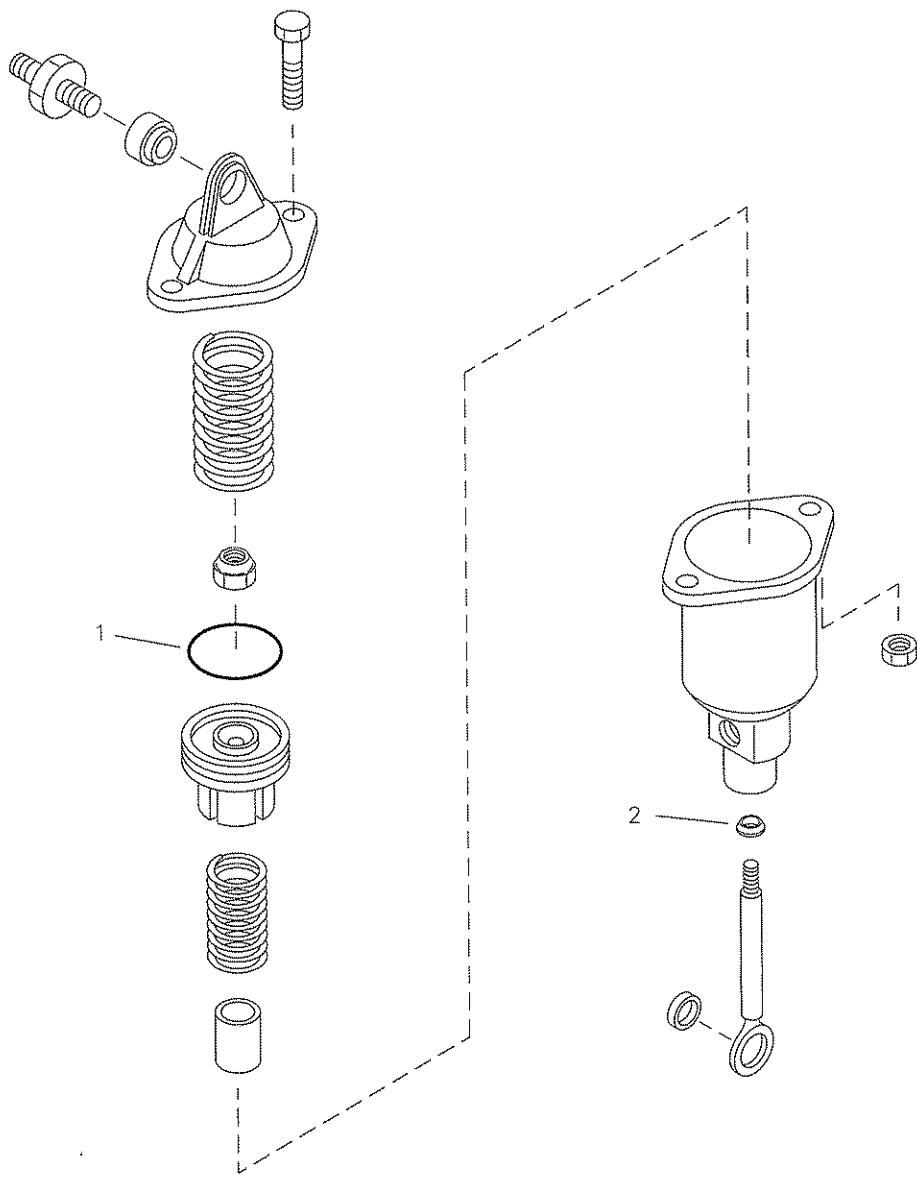
1310 9044 83 Rev. 00



### 23. Unloader Valve Service Kit

Ref	Part number	Qty	Name	Remarks
-	2911 0051 00	1	Unloading Valve Kit	
1		1	Piston Seal	
2		1	Wiper	
3		1	Valve	
4		1	Valve	
5		1	Spring	
6		1	Spring	
7		1	O-Ring	
8		1	O-Ring	
9		1	O-Ring	
10		1	O-Ring	
11		1	O-Ring	
12		1	O-Ring	

1310 9042 57 Rev. 00

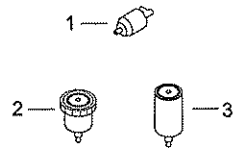


## 24. Speed Regulator Service Kit

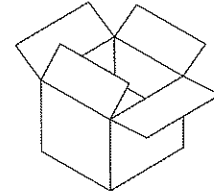
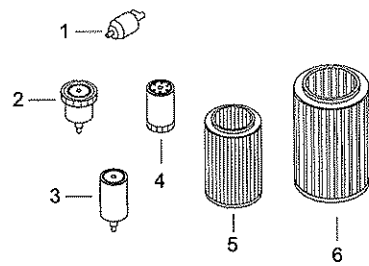
Ref	Part number	Qty	Name	Remarks
-	2911 0052 00	1	Speed Regulator Kit	
1		1	Piston Seal	
2		1	Wiper	

1310 9042 56 Rev. 00

SERVICE KIT  
250/750 HOUR

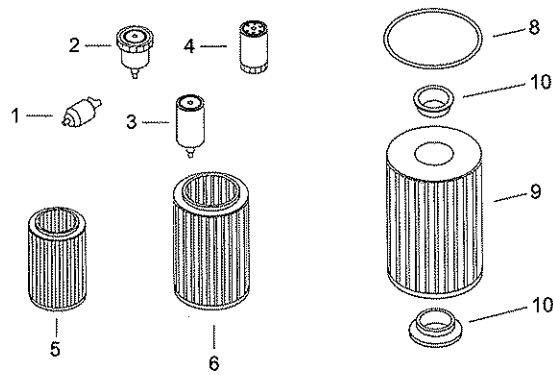


SERVICE KIT  
500 HOUR



OIL ANALYSIS KIT  
(RECOMMENDED EVERY  
500 HOURS)

SERVICE KIT  
1000 HOUR



## 25. Maintenance Kits

Ref	Part number	Qty	Name	Remarks
	1310 3003 74		250/750 Hour Service Kit	
1		1	Fuel Filter (Primary) Engine	
2		1	Fuel Filter (Final) Engine	
3		1	Oil Filter-Engine	
	1310 3003 75		500 Hour Service Kit	
1		1	Fuel Filter (Primary) Engine	
2		1	Fuel Filter (Final) Engine	
3		1	Oil Filter-Engine	
4		1	Oil Filter-Compressor	
5		1	Air Filter-Engine	
6		1	Air Filter-Compressor	
-	1310 3003 73		1000 Hour Service Kit	
1		1	Fuel Filter (Primary) Engine	
2		1	Fuel Filter (Final) Engine	
3		1	Oil Filter-Engine	
4		1	Oil Filter-Compressor	
5		1	Air Filter-Engine	
6		1	Air Filter-Compressor	
7		1	O-Ring	
8		1	Seal	
9		1	Seperator Element	
10		1	Seal	
-	1310 3083 46		Kit - Oil Analysis	

1310 9044 85 Rev. 00

## SAFETY PRECAUTIONS FOR PORTABLE COMPRESSORS (continued)

To be read attentively and acted on accordingly before  
towing, operating or repairing the unit.

11. Never operate the unit at pressures or speeds below or in excess of the limit ratings stated on the Principal Data sheet.
12. On water-cooled engines with closed cooling circuit, allow the unit to cool before removing a pressure cap.
13. All canopy doors shall be shut during operation. Ensure that any door that opens upwards is securely fastened when open.
14. Wear ear protectors when environmental noise can reach or exceed 90 dB(A).
15. Periodically check that:
  - a. All guards are in place and securely fastened.
  - b. All hoses and/or pipes inside the unit are in good condition, secure and not rubbing.
  - c. There are no fuel, oil or coolant leaks.
  - d. The tension of drive belts is correct.
  - e. All fasteners are tight.
  - f. All electrical leads are secure and in good order.
  - g. The engine exhaust system is in good condition.
  - h. Air outlet valves and manifold, hoses, couplings, etc., are in good repair, free of wear or abuse.
  - i. The wheel nuts are tightened to the proper torque.

When more than one compressor is connected to a common header, be sure each compressor has a non-return valve (check valve) to prevent reverse rotation when stopping.

### Maintenance

Maintenance and repair work shall only be carried out by adequately trained personnel; if required, under supervision of someone qualified for the job.

1. Use only the correct tools for maintenance and repair work.
  2. Use only genuine spare parts.
  3. All maintenance work, other than routine attention, shall only be undertaken when the compressor is stopped. Ensure that the unit cannot be started inadvertently.
  4. Before removing any pressurized component, effectively isolate the unit from all sources of pressure and relieve the entire system of pressure. Do not rely on non-return valves (check valves) to isolate pressure systems.
  5. Never use flammable solvents or carbon tetrachloride for cleaning parts. Take safety precautions against toxic vapors of cleaning liquids.
  6. Scrupulously observe cleanliness during maintenance and when performing repairs. Keep dirt away by covering the parts and exposed openings with a clean cloth, paper or tape.
  7. Never weld on or perform any operation involving heat near the fuel or oil systems. Fuel and oil tanks must be completely purged (e.g., by steam-cleaning) before carrying out such operations.
- Never weld on, or in any way modify, pressure vessels. Disconnect the alternator cables during arc welding on the unit.
8. Support the drawbar and the axles(s) securely if working underneath the unit or when removing a wheel. Do not rely on jacks.
  9. Make sure that no tools, loose parts or rags are left in or on the unit.

10. Before clearing the unit for use after maintenance or overhaul, check that operating pressures, temperatures and speeds are correct and that the control and shutdown devices function correctly.

11. Do not remove any of, or tamper with, the sound-damping material.

12. Protect the electrical and regulating components, the air filter, etc., to prevent moisture from entering them, e.g., when steam-cleaning.

13. Battery safety precautions:

- a. The electrolyte in batteries is a sulfuric acid solution which is fatal if it hits your eyes, and which can cause burns if it contacts your skin. Therefore, be careful when handling batteries e.g., when checking the charge condition.
- b. When batteries are being charged, an explosive gas mixture forms in the cells and might escape through the vent holes in the plugs. Thus an explosive atmosphere may form around the battery if ventilation is poor, and can remain in and around the battery for several hours after it has been charged.

Therefore:

- Never smoke near batteries being, or having recently been, charged.
- Never break live circuits at battery terminals, because a spark usually occurs. Take care when connecting or disconnecting booster leads or fast charge cable clamps.

**All responsibility for any damage or injury resulting from neglecting these precautions or by non-observance of ordinary caution and due care required in handling, operating, maintenance or repair, even if not expressly mentioned in this book, will be disclaimed by Atlas Copco.**

This instruction book describes how to handle and operate the subject machine(s) to ensure safe operation, optimum working economy and long service life.

**Read this book before putting the machine into operation** to ensure correct handling, operation and proper maintenance from the beginning. The maintenance schedule contains a summary of the measures for keeping the unit in good repair. The maintenance procedures are simple but must be carried out regularly.

Keep the book available for the operator(s) and make sure that the unit is operated and that the maintenance actions are carried out according to the instructions. Record all operating data, maintenance work effected, etc., in an operator's logbook available at Atlas Copco. Follow all applicable safety precautions, amongst others than those mentioned on the cover or on the first few pages of this book.

Repair operations should be performed by trained personnel, available at Atlas Copco Service Outlets, which should be contacted if any further information is desired.

In all correspondence always mention the unit type, product number, and the complete serial number, shown on the data plate.

For all specific data not mentioned in the text, consult sections "Preventive Maintenance Schedule" and "Principal Data".

**The company reserves the right to make changes without prior notice.**



