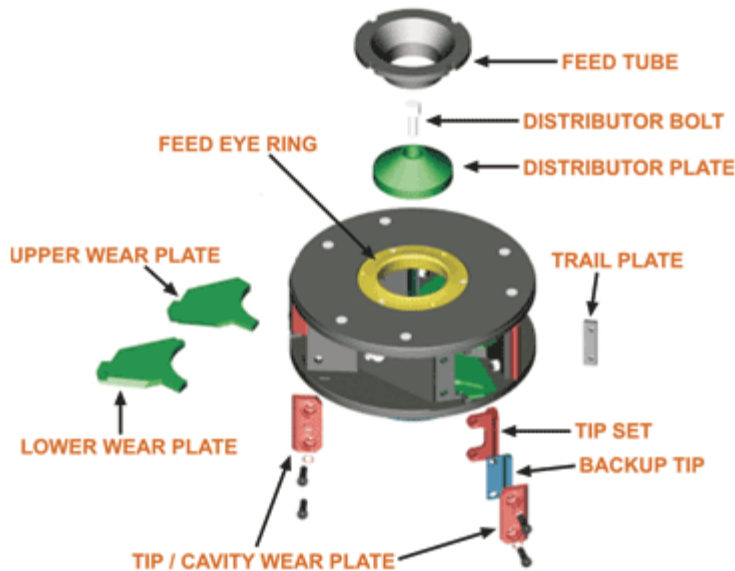


690STD OPEN SIDED ROTOR

Product Specification / Parts Reference

Refer [690STD Rotor Specification N11505110](#)



DISCLAIMER The listed components are currently available from the manufacturer. However, all components may not be available to all markets. The manufacturer reserves the right to change component design, packaging and availability without notice. Contact your Barmac representative for further information.

WHEN PRINTING Please print from Internet Explorer version 6.0. You may experience problems if you print from an earlier version.

BASIC ROTOR

- MM0407469 690STD BASIC ROTOR ASSEMBLY
... approximate weight: **215 kg**

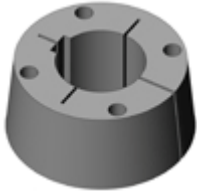


Contents:

B69274106G/W	690 OPEN SIDED ROTOR WELDMENT	x 1
B69274008A	TOP PLATE	x 1
BOLT 16*40	HEX HEAD BOLT ISO4014 (M16 x 40 8.8 ZP)	x 12
B80304013A	BOLT-IN ROTOR BOSS	x 1
BOLT FT 20*50	HEX HEAD SCREW ISO4017 (M20 x 50 8.8 ZP)	x 6
B69274170D	LIPPED TOP WEAR PLATE SET	x 1
B61274180A	LIPPED BOTTOM WEAR PLATE SET	x 1

TAPER LOCK

- B69274007A - TAPER LOCK
... approximate weight: **8.2 kg**



FEED TUBE

- B691S7040A - FEED TUBE
... approximate weight: **12.2 kg**
BLACK



Associated TIB's: **none**
Associated BOIN's: **none**

DISTRIBUTOR PLATE

- B69274120B - DISTRIBUTOR PLATE
... approximate weight: **12.3 kg**
Flat GREEN



- B69274120C - DISTRIBUTOR PLATE
... approximate weight: **14.6 kg**
Cone GREEN



DISTRIBUTOR BOLT

- 7001530521 - DISTRIBUTOR BOLT
... approximate weight: **0.3 kg**



FEED EYE RING

● B69274030E - BOLT ON FEED EYE RING KIT

... approximate weight: **9.29 kg**

YELLOW



Contents:

B69274031E	FEED EYE RING - BOLT-ON STANDARD	x 1
B69274032D	FEED EYE RING BOLT SET	x 1 SET
B69274032D/B	FEED EYE RING SCREW	x 6
B96334032D/A	M16 CSK COPPER WASHER	x 6

UPPER WEAR PLATE

● B69274135A - UPPER WEAR PLATE SET

... approximate weight: **13.69 kg**

GREEN



Contents:

B69274136A	UPPER WEAR PLATE - HIGH CHROME	x 3
------------	--------------------------------	-----

LOWER WEAR PLATE

● B69274140A - LOWER WEAR PLATE SET

... approximate weight: **15.03 kg**

GREEN



Contents:

B69274141A	LOWER WEAR PLATE - HIGH CHROME	x 3
------------	--------------------------------	-----

TRAIL PLATE

○ B69274055A - TRAIL PLATE SET

... approximate weight: **2.2 kg**



Contents:

B69274056A	TRAIL PLATE - NARROW	x 3
BOLT 12*40	HEX HEAD BOLT ISO4014	
	M12 x 40 8.8 ZP	x 6
WASHER S12	WASHER M12 SPRING	x 6
NUT 12	7001563012 HEX NUT ISO4032 M12 ZP	x 6

● B69274055B - TRAIL PLATE SET

... approximate weight: **3 kg**



Contents:

B69274056B	TRAIL PLATE - WIDE	x 3
BOLT 12*40	HEX HEAD BOLT ISO4014	
	M12 x 40 8.8 ZP	x 6
WASHER S12	WASHER M12 SPRING	x 6
NUT 12	7001563012 HEX NUT ISO4032 M12 ZP	x 6

○ B69274055C - TRAIL PLATE SET

... approximate weight: **1.94 kg**



Contents:

B69274056C	TRAIL PLATE - STRAIGHT	x 3
BOLT 12*40	HEX HEAD BOLT ISO4014	
	M12 x 40 8.8 ZP	x 6
WASHER S12	WASHER M12 SPRING	x 6
NUT 12	7001563012 HEX NUT ISO4032 M12 ZP	x 6

○ B69274255B - TRAIL PLATE SET

... approximate weight: **3.64 kg**



Contents:

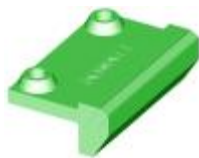
B69274256C	TUNGSTEN TRAIL PLATE - WIDE	x 3
BOLT 12*40	HEX HEAD BOLT ISO4014	
	M12 x 40 8.8 ZP	x 6
WASHER S12	WASHER M12 SPRING	x 6
NUT 12	7001563012 HEX NUT ISO4032 M12 ZP	x 6

TIP SETS

○ B69274048A - TIP SET

... approximate weight: **9.2 kg**

GREEN



Contents:

B69274047A	TIP - 690 - GREEN -	
	EXTRA HARD - PLATE - GBR	x 3
B96394052D	TAPER BOLT	x 6
B96394053A	COPPER WASHER	x 6

○ B69274048B - TIP SET

... approximate weight: **9.24 kg**

BLUE



Contents:

B69274047B	TIP - 690 - BLUE -	
	HARD - PLATE - GBR	x 3
B96394052D	TAPER BOLT	x 6
B96394053A	COPPER WASHER	x 6

○ B69274048C - TIP SET

... approximate weight: **7.65 kg**

YELLOW



Contents:

B69274047C	TIP - 690 - YELLOW -	
	EXTRA HARD - HANGER - GBR	x 3
B96394052D	TAPER BOLT	x 6
B96394053A	COPPER WASHER	x 6

- B69274048D - TIP SET
... approximate weight: **7.68 kg**
RED

**Contents:**

B69274047D	TIP - 690 - RED -	
	HARD - HANGER - GBR	x 3
B96394052D	TAPER BOLT	x 6
B96394053A	COPPER WASHER	x 6

BACKUP TIP SET

- B69274060A - BACKUP TIP SET
... approximate weight: **2.77 kg**
BLUE

**Contents:**

B69274061A	BACKUP TIP	x 3
------------	------------	-----

TIP / CAVITY WEAR PLATE BOLT SET

- B96394150L/B - TIP/CAVITY WEAR PLATE BOLT SET (2 sets required for full rotor dress)
... approximate weight: **0.12 kg**

**Contents:**

B96394052D	CWP BOLT - 74	x 3
B96394053A	COPPER WASHER	x 3
NUT 20	NUT M20	x 3
WASHER S20	WASHER M20 FLAT	x 3

TIP / CAVITY WEAR PLATE SETS

- B69274050E - TIP / CAVITY WEAR PLATE SET (2 sets required for full rotor dress)
... approximate weight: **7.68 kg**
RED

**Contents:**

B69274051A	TIP CARRIER WEAR PLATE	x 3
------------	------------------------	-----