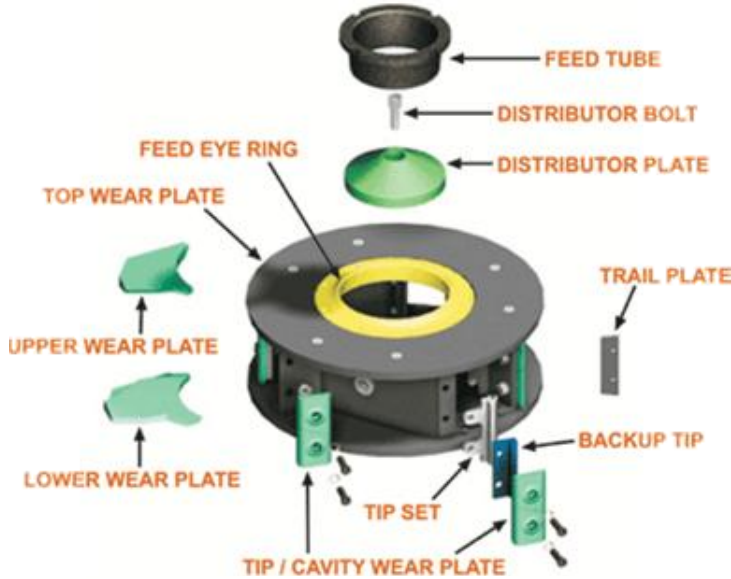


## 760 OPEN SIDED ROTOR

### Product Specification

RELEASE DATE February 2008 Previous releases: [April 2007](#) [September 2006](#) [December 2004](#)



DISCLAIMER The listed components are currently available from the manufacturer. However, all components may not be available to all markets. The manufacturer reserves the right to change component design, packaging and availability without notice. Contact your Barmac representative for further information.

WHEN PRINTING Please print from Internet Explorer version 6.0. You may experience problems if you print from an earlier version.

## BARE ROTOR

### ● B80304105C - 760 OPEN SIDED BARE ROTOR - MkII

... approximate weight: **256.8 kg**

Open Sided, Replaceable Backup Tip, Fixed Feed Eye Ring, Full Diameter Bolt-On Top, MkII



Associated TIB's: [17](#) [28](#) [172](#) [201](#) [240](#) [256](#) [270](#) [311](#) [328](#)

Associated BOIN's: [P699](#)

**Contents:**

|               |   |      |
|---------------|---|------|
| B80304106C/W  | 760 OPEN SIDED ROTOR WELDMENT               | x 1  |
| B69274007A    | ROTOR TAPER LOCK MkI                        | x 1  |
| B69274008A    | TOP PLATE                                   | x 1  |
| BOLT 16*40    | HEX HEAD BOLT ISO4014<br>(M16 x 40 8.8 ZP)  | x 12 |
| B80304013A    | BOLT-IN ROTOR BOSS                          | x 1  |
| BOLT FT 20*50 | HEX HEAD SCREW ISO4017<br>(M20 x 50 8.8 ZP) | x 6  |

## FEED TUBE

### ● B702S7040A - FEED TUBE

... approximate weight: **13.61 kg**

Standard BLACK



Associated TIB's: [71](#)

Associated BOIN's: **none**

**DISTRIBUTOR PLATE**

● B96394120C - DISTRIBUTOR PLATE

... approximate weight: **28.9 kg**

Cone GREEN



Associated TIB's: [119](#) [335](#)  
 Associated BOIN's: **none**

**DISTRIBUTOR BOLT**

● B96394025A - DISTRIBUTOR BOLT

... approximate weight: **0.6 kg**

Standard



Associated TIB's: [36](#)  
 Associated BOIN's: **none**

**FEED EYE RING**

● B80304030D - BOLT ON FEED EYE RING KIT

... approximate weight: **20.42 kg**

Turnable YELLOW



Associated TIB's: [194](#) [273](#) [335](#)  
 Associated BOIN's: [P405](#) [P471](#)

*Contents:*

|                 |                                  |         |
|-----------------|----------------------------------|---------|
| B80304031D      | FEED EYE RING - BOLT-ON STANDARD | x 1     |
| B96334032D      | FEED EYE RING BOLT SET           | x 1 SET |
| CSK SCREW 10*30 | COUNTERSUNK SCREW M10 x 30       | x 9     |
| B96334032D/A    | M16 CSK COPPER WASHER            | x 9     |

**UPPER WEAR PLATE**

● B80304135B - UPPER WEAR PLATE SET

... approximate weight: **19 kg**

GREEN



Associated TIB's: [335](#)  
 Associated BOIN's: **none**

*Contents:*

|            |                                |     |
|------------|--------------------------------|-----|
| B80304136B | UPPER WEAR PLATE - HIGH CHROME | x 3 |
|------------|--------------------------------|-----|

**LOWER WEAR PLATE**

● B80304140B - LOWER WEAR PLATE SET

... approximate weight: **25.16 kg**

GREEN



Associated TIB's: [335](#)  
Associated BOIN's: **none**

*Contents:*  
B80304141B LOWER WEAR PLATE - HIGH CHROME x 3

**TRAIL PLATE**

● B80304055A - TRAIL PLATE SET

... approximate weight: **2.84 kg**

Standard Narrow BLACK



Associated TIB's: [38](#)  
Associated BOIN's: **none**

*Contents:*  
B80304056A TRAIL PLATE - NARROW x 3  
BOLT 12\*40 HEX HEAD BOLT ISO4014  
M12 x 40 8.8 ZP x 6  
WASHER S12 WASHER M12 SPRING x 6  
NUT 12 7001563012 HEX NUT ISO4032 M12 ZP x 6

**TIP SETS**

● B96394048P - TIP SET

... approximate weight: **10.49 kg**

Ext. Hanger 1 Piece Hard SILVER



Associated TIB's: [140](#) [311](#)  
Associated BOIN's: **none**

*Contents:*  
B96394047P TIP - 1 PIECE - SILVER -  
HARD - EXTENDED HANGER x 3  
B96394052D TAPER BOLT 74 x 6  
B96394053A COPPER WASHER x 6

**BACKUP TIP SET**

● B96394060B - BACKUP TIP SET

... approximate weight: **3.21 kg**

Standard BLUE



Associated TIB's: [338](#)  
Associated BOIN's: **none**

*Contents:*  
B96394061B BACKUP TIP x 3

**TOP WEAR PLATE**

● B80304170C - TOP WEAR PLATE SET

... approximate weight: **41.51 kg**

Standard BLACK



Associated TIB's: [172](#) [195](#)

Associated BOIN's: **none**

*Contents:*

|                 |                              |         |
|-----------------|------------------------------|---------|
| B80304171B      | TOP WEAR PLATE               | x 1     |
| B96394172A      | TOP WEAR PLATE BOLT SET      | x 1 SET |
| CSK SCREW 16*50 | SOCKET HD CSK SCREW M16 x 50 | x 6     |
| NUT 16          | HEX NUT ISO4032 M16 ZP       | x 6     |

**BOTTOM WEAR PLATE**

● NOT REQUIRED

**TIP / CAVITY WEAR PLATE BOLT SET**

● B96394150O/B - CAVITY WEAR PLATE BOLT SET (2 sets required for full rotor dress)

... approximate weight: **0.12 kg**

Standard



Associated TIB's: [81](#) [277](#) [305](#) [402](#)

Associated BOIN's: **none**

*Contents:*

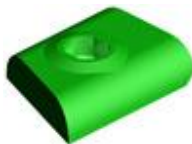
|            |                   |     |
|------------|-------------------|-----|
| B96394052E | CWP BOLT - 82     | x 3 |
| B96394053A | COPPER WASHER     | x 3 |
| NUT 20     | NUT M20           | x 3 |
| WASHER S20 | WASHER M20 SPRING | x 3 |

**TIP / CAVITY WEAR PLATE SETS**

● B96394150N - OUTER REVERSIBLE TIP / CAVITY WEAR PLATE SET (4 sets required for full rotor dress)

... approximate weight: **6.25 kg**

Outer Reversible GREEN



Associated TIB's: [261](#) [277](#) [402](#)

Associated BOIN's: [P558](#)

*Contents:*

|            |   |     |
|------------|---|-----|
| B96394151N | OUTER REVERSIBLE<br>TIP/CAVITY WEAR PLATE | x 3 |
|------------|---|-----|