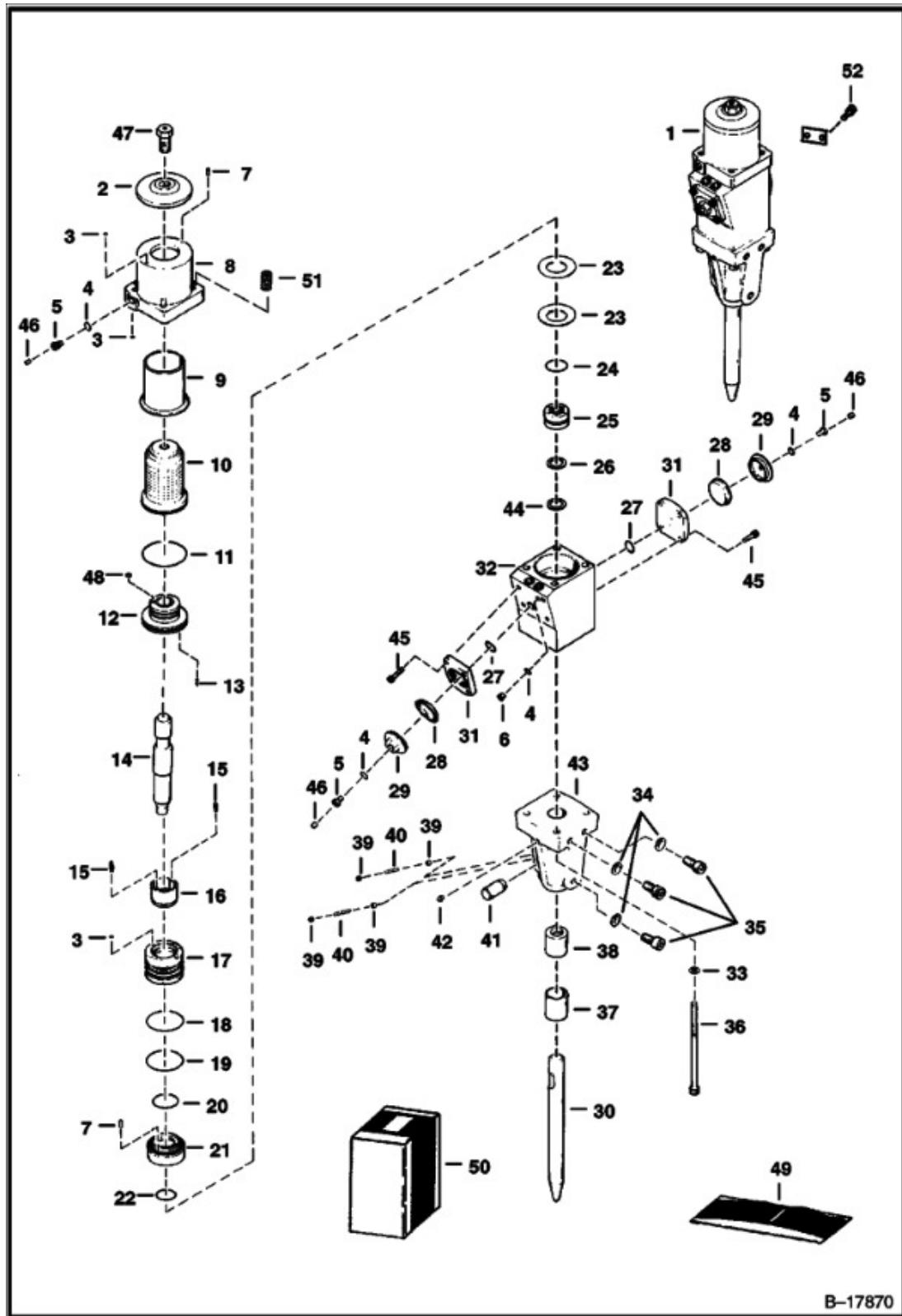


Title: Breaker (Hydraulic Breaker) (2500)

Model Number: Breaker

Serial Number: Loader



Title: Breaker (Hydraulic Breaker) (2500)

Model Number: Breaker

Serial Number: Loader

Ref.	Part Number	Description	S/N	Qty
1		BREAKER, BREAKER, NLA - Ref. 2 - 48 - Was 6630514, A		1
2		PLATE, PLATE, NLA - Was 6630649, A		1
3	6630641	O'RING 5		9
4	79K8	O-RING 10		3
5	6679827	VALVE, CHARGE, charge - Was 6672859, A		1
6	47K6	PLUG		3
7	209968	PIN		2
8		CHAMBER, CHAMBER, NLA - Was 6630648, A		1
9	6630647	DIAPHRAGM		1
10	6630646	SCREEN, main		1
11	58K258	O-RING 10		1
12		MANIFOLD, MANIFOLD, NLA - assy - newer manifolds do not require Ref. 48 - Was 6630645, A		1
13	742953	ROLL PIN		1
14		HAMMER, HAMMER, NLA - Was 6630644, A		1
14		HAMMER, HAMMER, NLA - crosshatched - 15.2" long - Was 6664853, A		1
15	6630643	PIN, push		2
16		VALVE, VALVE, NLA - Order Ref. 50	193 & Below	1
16		VALVE, VALVE, NSS - Order Ref. 50	194 & Above	1
17		VALVE, VALVE, NSS - cylinder - Order Ref. 50	193 & Below	1
17		VALVE, VALVE, NSS - cylinder - Order Ref. 50	194 & Above	1
18	6630673	O-RING, poly-pac - .125" x 5.25" (3,18mm x 133,35mm)		1

Title: Breaker (Hydraulic Breaker) (2500)

Model Number: Breaker

Serial Number: Loader

Ref.	Part Number	Description	S/N	Qty
19	6630672	O-RING, poly-pac - .125" x 5.125" (3,18mm x 130,18mm)		1
20	58K238	O-RING		1
21		VALVE, VALVE, NLA - seat - Was 6630639, A		1
22		SEAL, SEAL, NLA - Order Ref. 49 - Was 6630638, A		1
23		DISC, DISC, NLA - Spring - Was 6630637, A		2
24	58K235	O-RING 10		1
25		BEARING, BEARING, NLA - Lower - Was 6630636, A		1
26		SEAL, SEAL, NLA - poly-pac - Was 6630634, A		1
26	6664854	SEAL		1
27	58K224	O RING 10		2
28	6630631	DIAPHRAGM, accumulator		2
29	6630632	PLUG, accumulator		2
30		TOOL, TOOL, See Illustration		1
31	6630630	SCREEN, accumulator		2
32		BODY, BODY, NLA - main - Was 6630628, A		1
33	6631423	WASHER		4
34	6654811	WASHER, cone - Also Order Ref. 35 - Was 6630515, A		6
35	6654810	BOLT, Also Order Ref. 34 - Was 73G001632B, A		6
36	6656345	BOLT		4
37		BEARING, BEARING, NLA - Was 6630621, A		1
38		STOP, STOP, NLA - Was 6630622, D		1
39	6630623	RETAINER, retainer pin		4
40	6630624	PIN, retainer		4
41	6630625	PIN, retainer		1
42	6630626	FITTING, GREASE		1

Title: Breaker (Hydraulic Breaker) (2500)

Model Number: Breaker

Serial Number: Loader

Ref.	Part Number	Description	S/N	Qty
43		BODY, BODY, NLA - lower - W/Ref. 37 - 42 - Was 6648906, A		1
44		SEAL, SEAL, NLA - poly-pac - W/ O-ring removed - Was 6630635, A		1
44	6665125	SEAL, WIPER		1
45	73G1028	BOLT		8
46	6630682	PLUG, .125" (3,18mm) NPT		3
46	6663956	PLUG, .3125 (7,94mm) NPT		3
46	47K4	PLUG, 1/2" O-ring boss		3
47		BOLT, BOLT, NLA - Was 6630650, A		1
48		PLUG, PLUG, NLA - orifice - not used with newer manifolds (Ref. 12) - plug W.20" hole - Was 6633700, A		1
49	6666550	KIT, SEAL, Ref. 3, 4, 6, 11, 18 - 20, 22, 24, 26, 27 & 44 - Was 6660116, A		1
50	6632220	VALVE KIT, NLA - Ref. 16 & 17 - Was 6632220, A		1
51		HELICOID, HELICOID, NLA - Was 6661237, A		4
52	6673312	RIVET, for serial no. plate		2