

# SCHEMATIC FEATURES AND TIPS

Make sure your Adobe Acrobat Reader is up to date in order to access the latest features of this schematic.

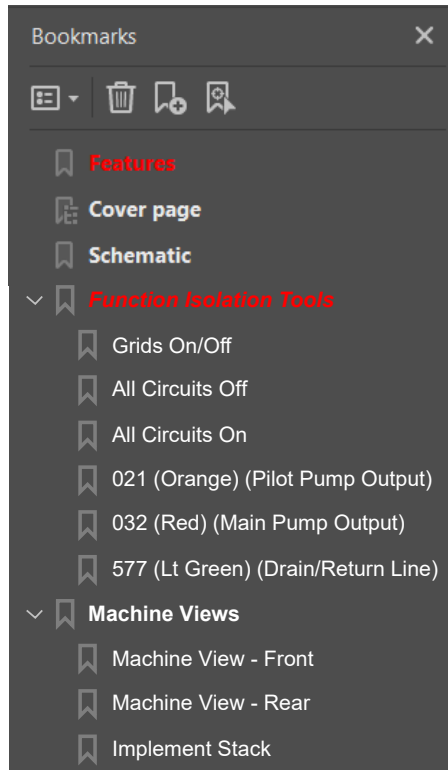
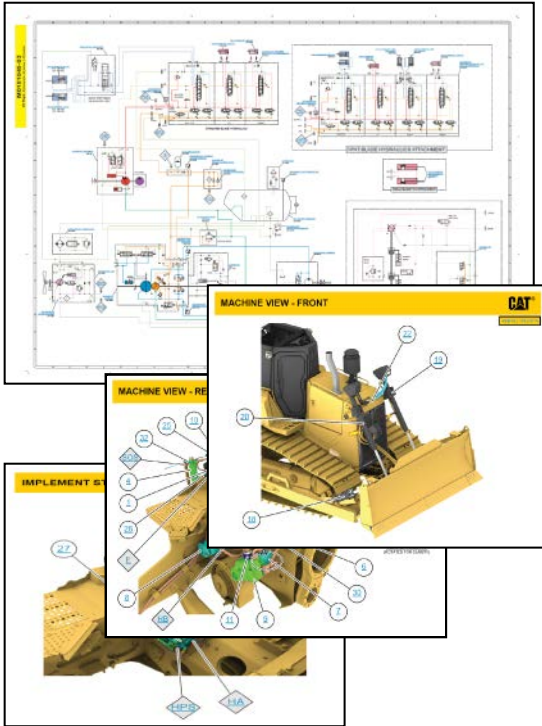


GET Adobe Acrobat Reader

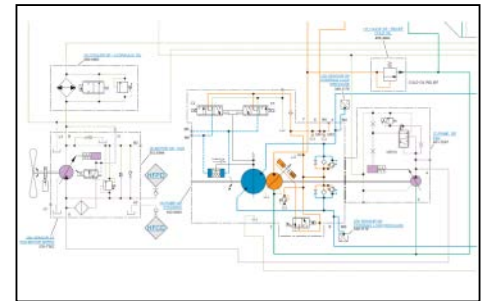


SAVE a copy of this schematic

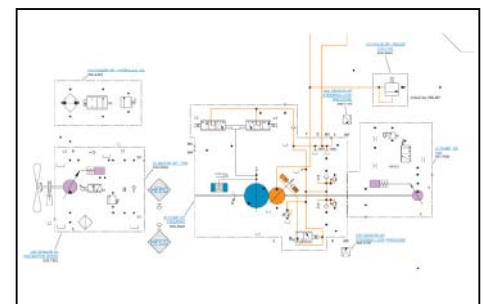
THE BOOKMARKS PANEL WILL ALLOW YOU TO QUICKLY NAVIGATE TO POINTS OF INTEREST.



THE FUNCTION ISOLATION TOOLS ISOLATE CIRCUITS FOR TRACING HYDRAULIC LINES

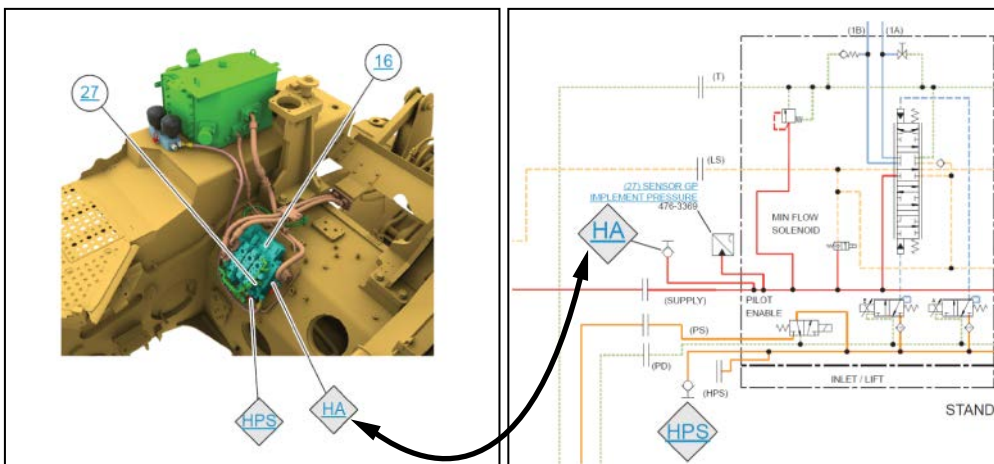


STANDARD VIEW



021 (Orange) (Pilot Output) CIRCUIT ISOLATED

UTILIZE HYPERTEXT TO NAVIGATE TO COMPONENTS AND THEIR MACHINE LOCATION QUICKLY. HYPERTEXT IS INDICATED BY TEXT THAT IS **BLUE AND UNDERLINED**.



**VIEW ALL CALLOUTS**

WHEN ONLY ONE CALLOUT IS SHOWING ON A MACHINE VIEW, CLICKING ON THIS BUTTON WILL MAKE ALL OF THE CALLOUTS VISIBLE. THIS BUTTON IS TYPICALLY LOCATED IN THE TOP RIGHT CORNER OF EVERY MACHINE VIEW PAGE.

[CLICK HERE TO VIEW THE SCHEMATIC SYMBOLS AND DEFINITIONS PAGE](#)

ELECTRICAL SYMBOLS			
Pressure Switch	Temperature Switch	Level Switch	Circuit Breaker

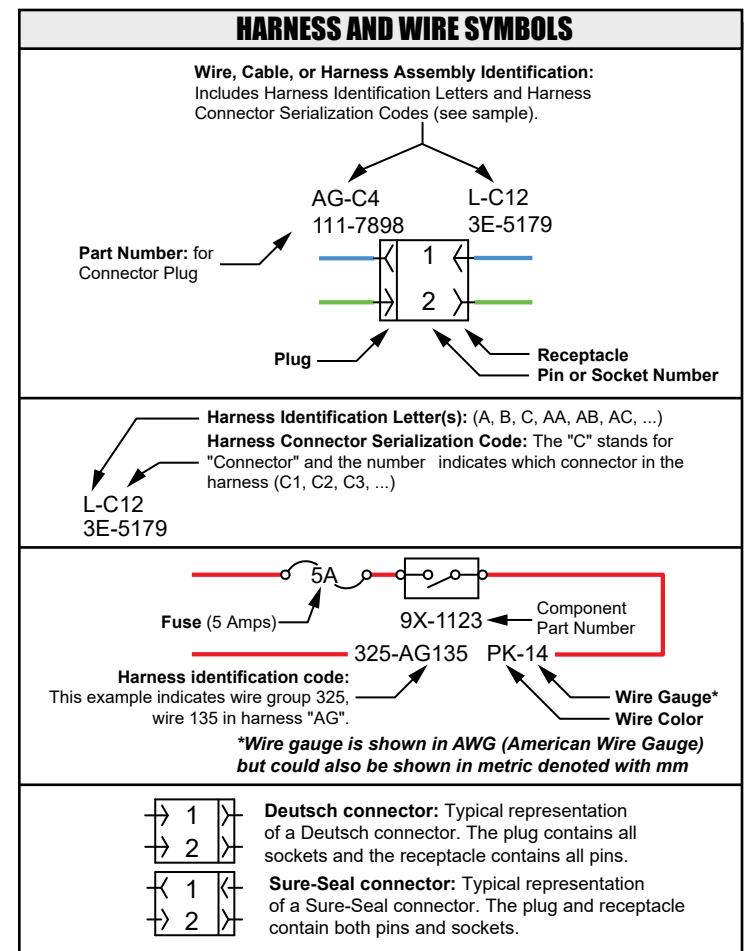
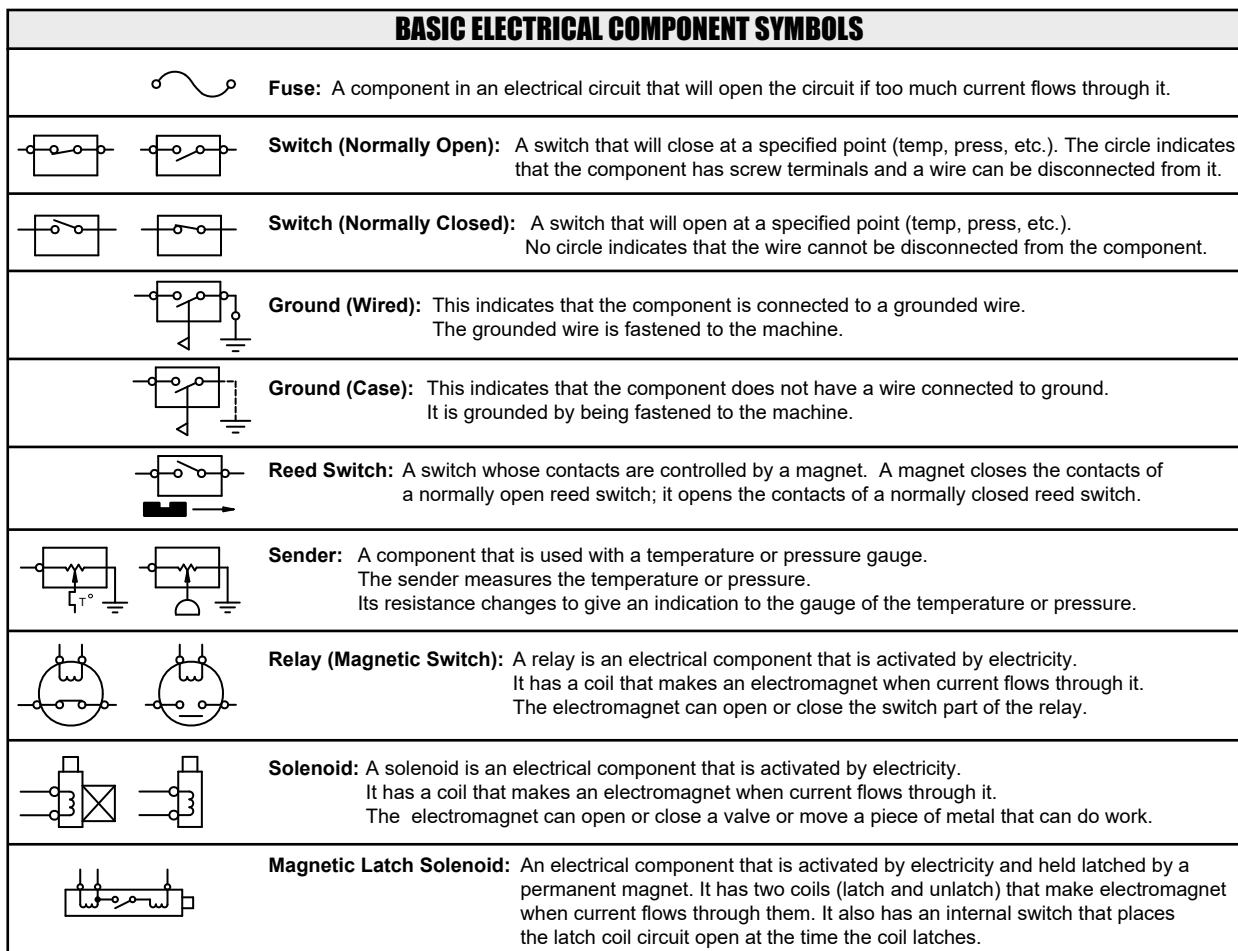
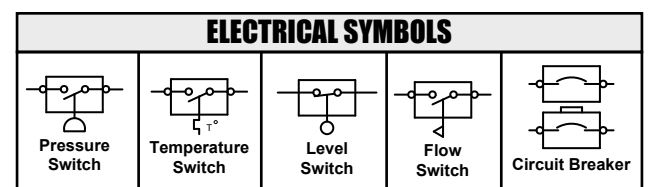
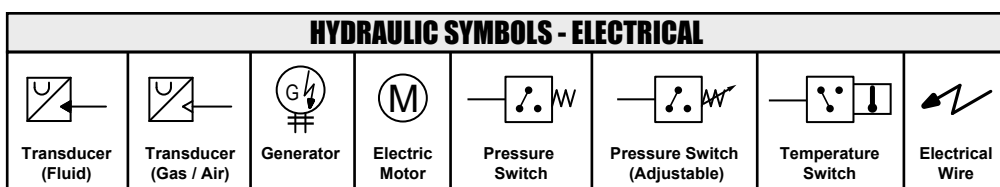
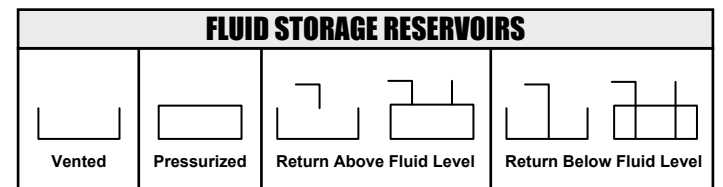
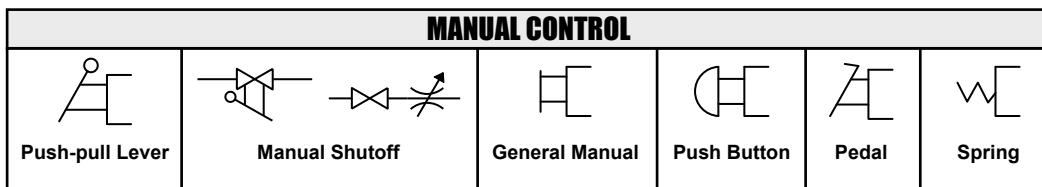
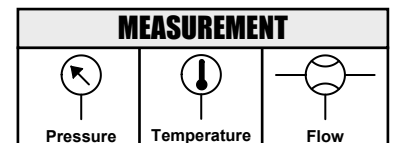
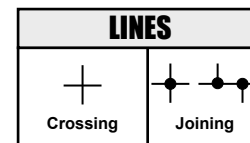
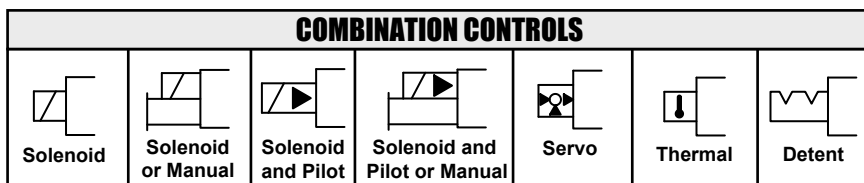
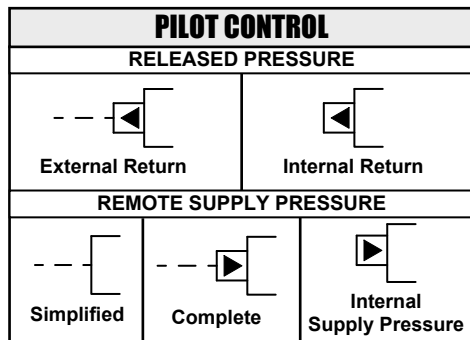
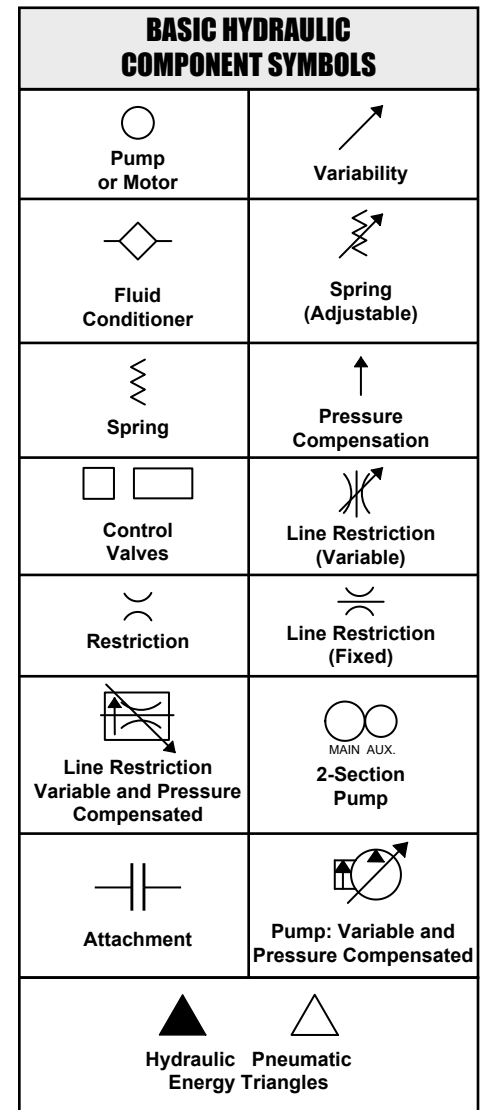
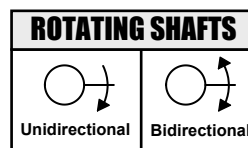
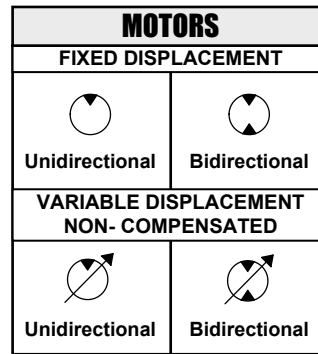
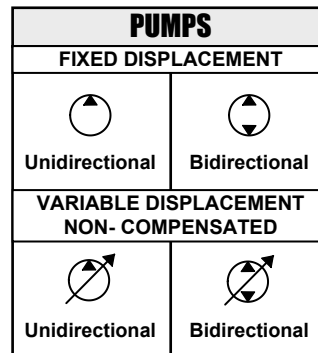
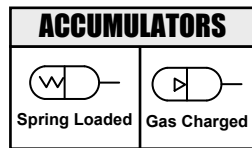
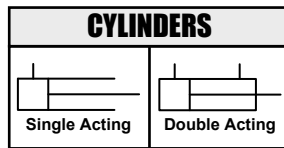
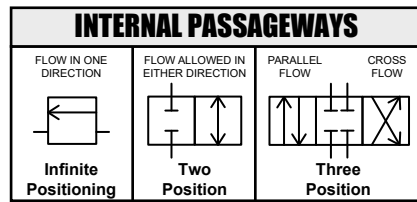
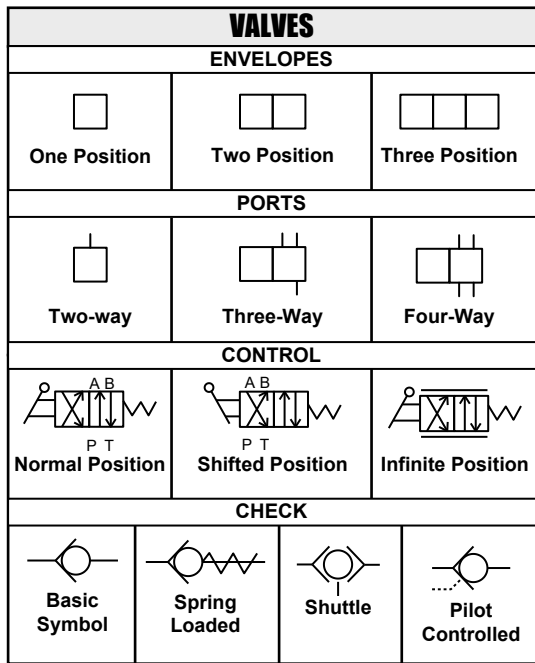
BASIC HYDRAULIC SYMBOLS			
Fluid Conditioner	Pump or Motor	Spring (Adjustable)	Variability

HOTKEYS (Keyboard Shortcuts)		
FUNCTION	KEYS	
	Zoom In	"CTRL" / "+"
	Zoom Out	"CTRL" / "-"
	Fit to Page	"CTRL" / "0" (zero)
	Hand Tool	"SPACEBAR" (hold down)
	Find	"CTRL" / "F"
	Search	"CTRL" / "SHIFT" / "F"

Due to different monitor sizes and PDF reader preferences there may be some variance in linked schematic locations. This document is best viewed at a screen resolution of 1024 X 768.



# SCHEMATIC SYMBOLS AND DEFINITIONS





# Schematic

---

## **CB-214E, CB-224E, and CB-225E Vibratory Compactor Hydraulic System**

---

2141-UP  
2241-UP  
2251-UP

# COMPONENT LOCATION



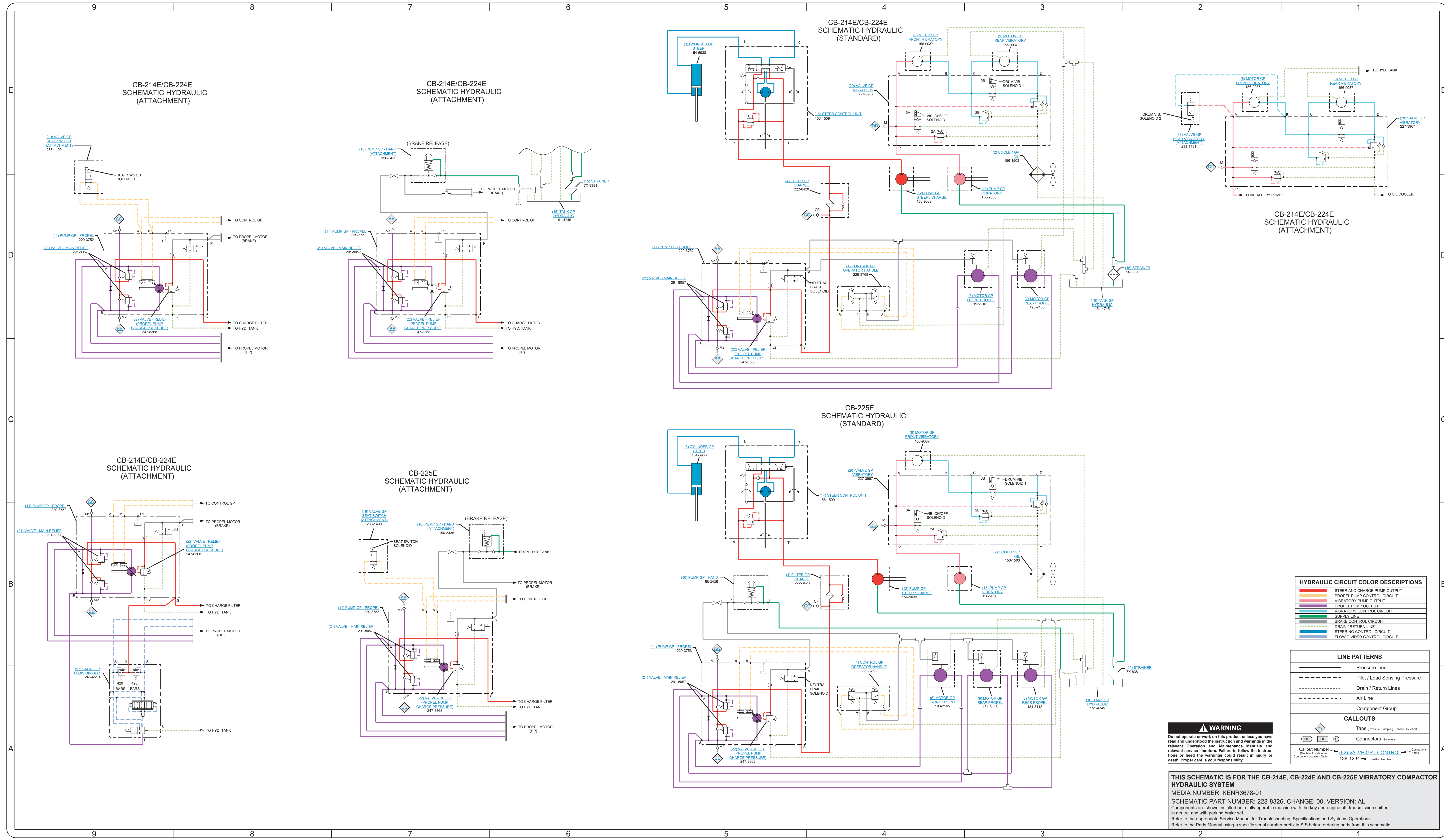
Description	Schematic Location	Machine Location
Control Gp - Operator Handle	<a href="#">A-4, D-4</a>	<a href="#">1</a>
Cooler Gp - Oil	<a href="#">B-3, E-3</a>	<a href="#">2</a>
Cylinder Gp - Steer	<a href="#">C-5, E-5</a>	<a href="#">3</a>
Filter Gp - Charge	<a href="#">B-5, D-5</a>	<a href="#">4</a>
Motor Gp - Front Propel	<a href="#">A-4, D-3</a>	<a href="#">5</a>
Motor Gp - Front Vibratory	<a href="#">C-4, E-2, E-4</a>	<a href="#">6</a>
Motor Gp - Rear Propel (214 / 224)	<a href="#">D-3</a>	<a href="#">7</a>
Motor Gp - Rear Propel (225)	<a href="#">A-3</a>	<a href="#">8</a>
Motor Gp - Rear Vibratory	<a href="#">E-1, E-3</a>	<a href="#">9</a>
Pump Gp - Hand	<a href="#">B-5, B-7, E-7</a>	<a href="#">10</a>
Pump Gp - Propel	<a href="#">B-5, B-7, D-5, D-7, D-9, B-9</a>	<a href="#">11</a>
Pump Gp - Steer / Charge	<a href="#">D-4, B-4</a>	<a href="#">12</a>
Pump Gp - Vibratory	<a href="#">D-3, B-3</a>	<a href="#">13</a>
Steer Control Unit	<a href="#">E-4, C-4</a>	<a href="#">14</a>
Strainer	<a href="#">D-2, D-6, A-2</a>	<a href="#">15</a>
Tank Gp - Hydraulic	<a href="#">D-3, A-3, D-6</a>	<a href="#">16</a>
Valve - Main Relief	<a href="#">B-9, D-9, A-5, B-7, D-7, D-5</a>	<a href="#">21</a>
Valve - Relief (Propel Pump Charge Pressure)	<a href="#">B-8, D-9, A-5, A-7, D-7, C-5</a>	<a href="#">22</a>
Valve Gp - Flow Divider	<a href="#">A-9</a>	<a href="#">17</a>
Valve Gp - Rear Vibratory	<a href="#">E-2</a>	<a href="#">18</a>
Valve Gp - Seat Switch	<a href="#">B-7, E-9</a>	<a href="#">19</a>
Valve Gp - Vibratory	<a href="#">E-4, E-1, C-4</a>	<a href="#">20</a>

# TAP LOCATION



Tap Number	Description	Schematic Location
<a href="#"><u>AA</u></a>	Propel Pump FWD Press Test Port (M1)	<a href="#"><u>B-7, D-7, D-9, B-9, D-5, B-5</u></a>
<a href="#"><u>BB</u></a>	Propel Pump REV Press Test Port (M2)	<a href="#"><u>A-7, D-7, D-9, B-9, C-5, A-5</u></a>
<a href="#"><u>CC</u></a>	Charge Pump Pressure Test Port (CF)	<a href="#"><u>D-4, B-4</u></a>
<a href="#"><u>DD</u></a>	Vibratory Pump Pressure Test Port (M)	<a href="#"><u>B-4, E-2, E-4</u></a>

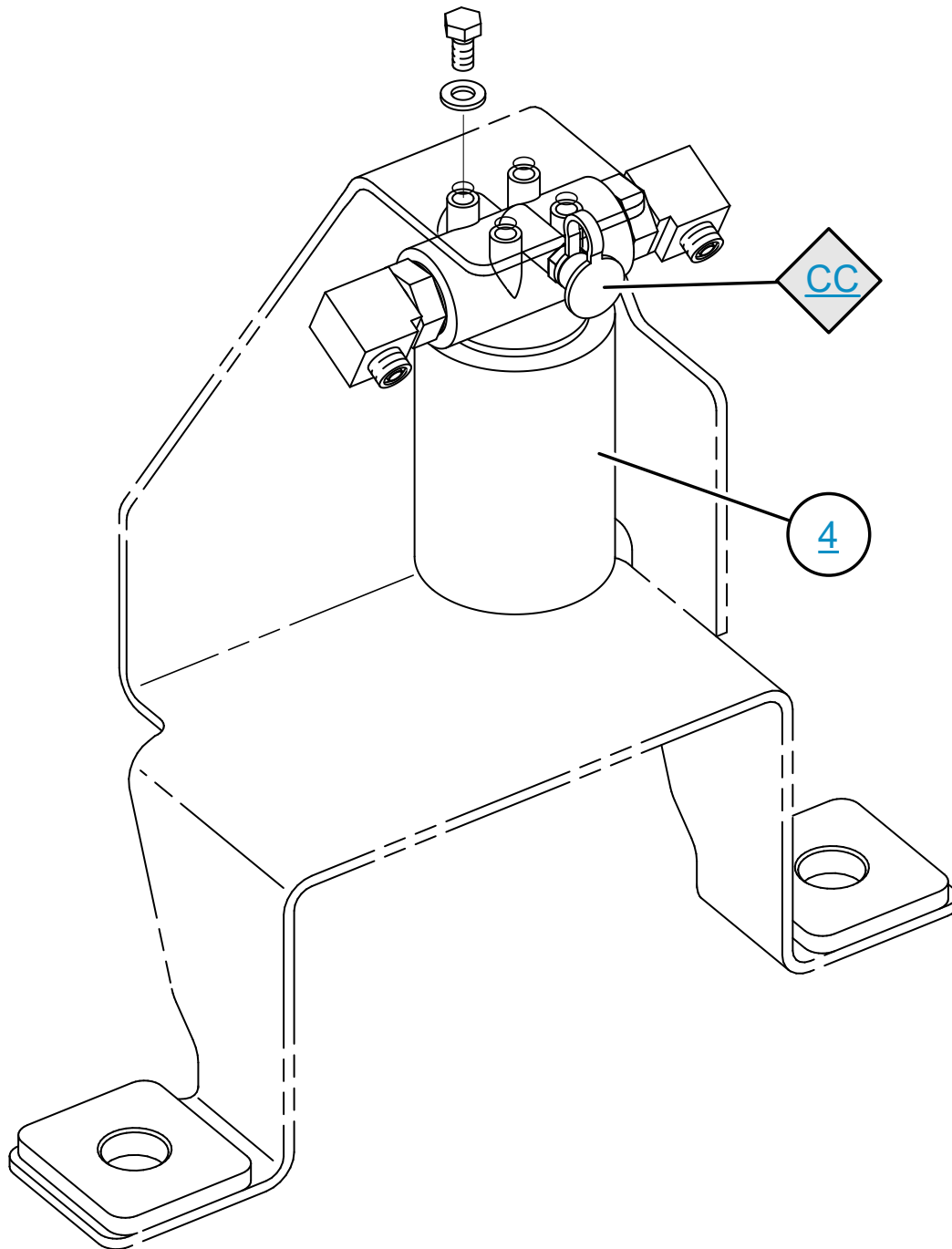




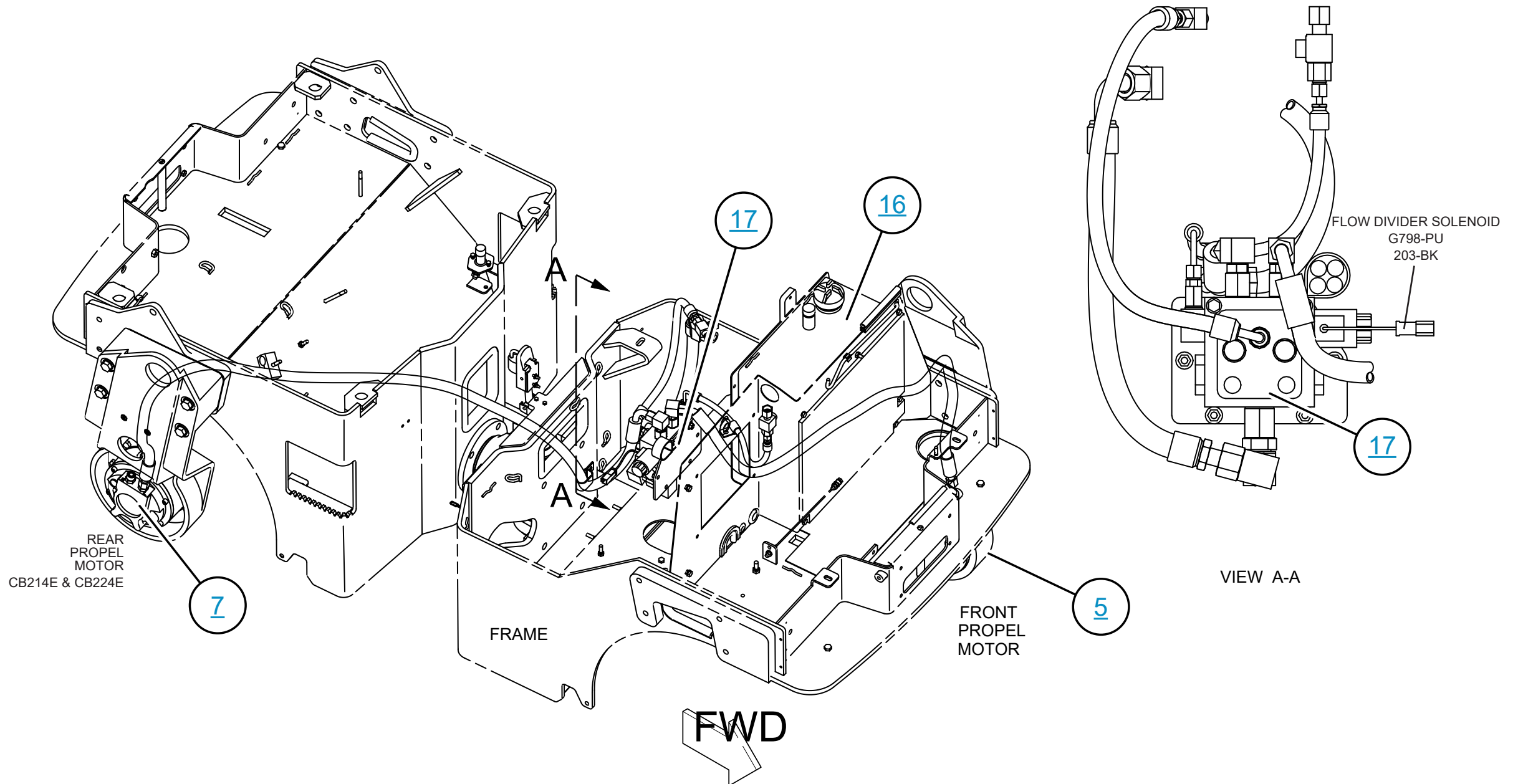
**WARNING**  
Do not operate or work on this product unless you have read and understood the instruction and warnings in the relevant Operation and Maintenance Manuals and relevant service literature. Failure to follow the instructions or heed the warnings could result in injury or death. Proper care is your responsibility.

**THIS SCHEMATIC IS FOR THE CB-214E, CB-224E AND CB-225E VIBRATORY COMPACTOR HYDRAULIC SYSTEM**  
MEDIA NUMBER: KENR3678-01  
SCHEMATIC PART NUMBER: 228-8326, CHANGE: 00, VERSION: AL  
Components are shown installed on a fully operable machine with the key and engine off, transmission shifter in neutral and with parking brake set.  
Refer to the appropriate Service Manual for Troubleshooting, Specifications and Systems Operations.  
Refer to the Parts Manual using a specific serial number prefix in SIS before ordering parts from this schematic.

# CHARGE FILTER



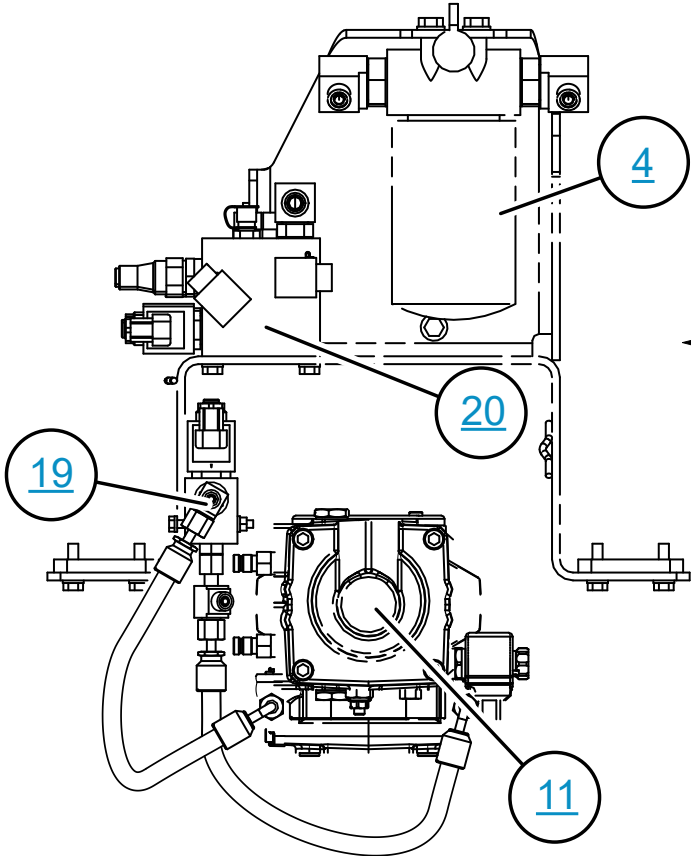
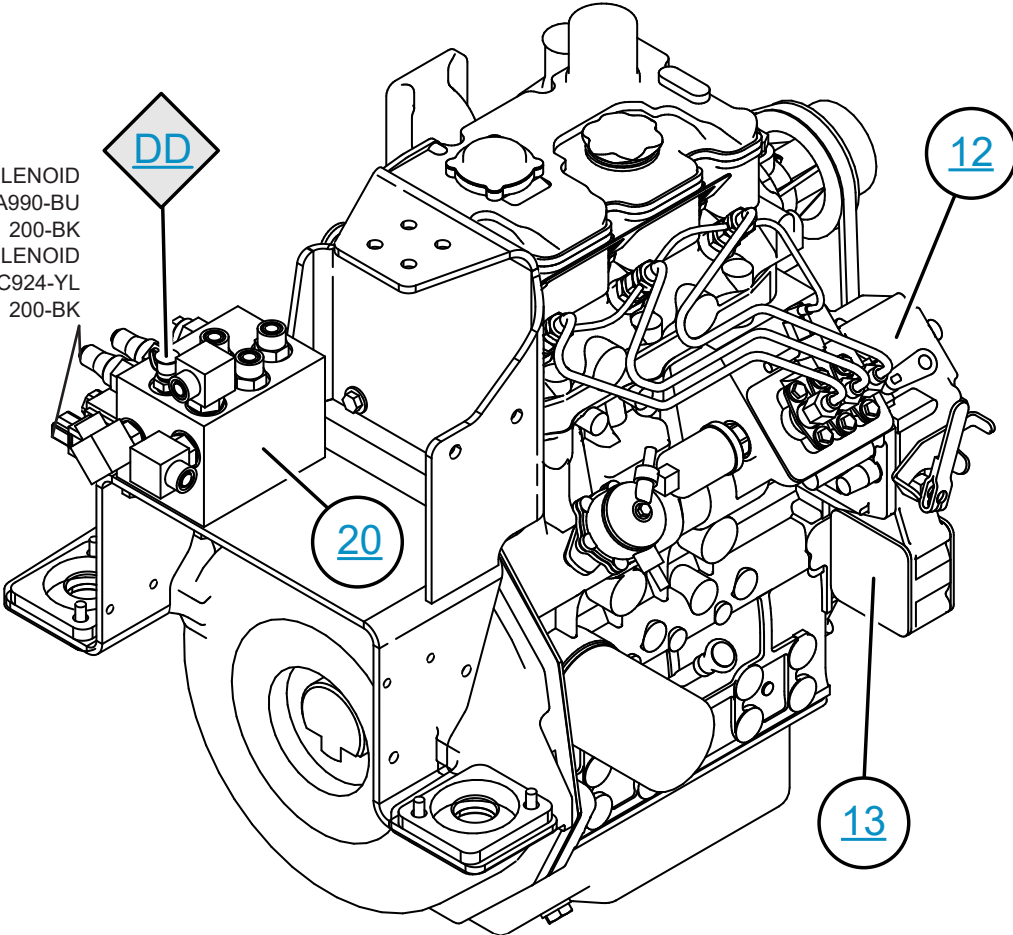
# CHASSIS - TOP RIGHT VIEW





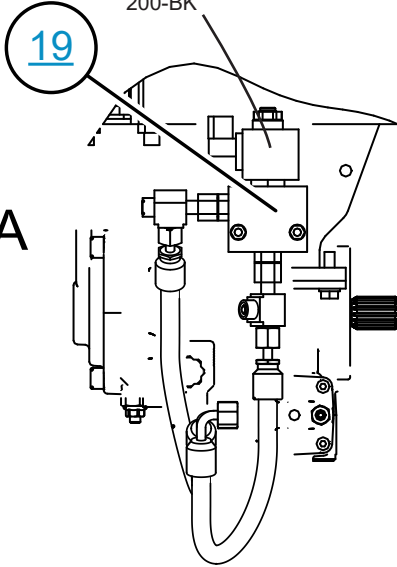
ON / OFF SOLENOID  
A990-BU  
200-BK  
DRUM VIBRATE SOLENOID  
C924-YL  
200-BK

DD



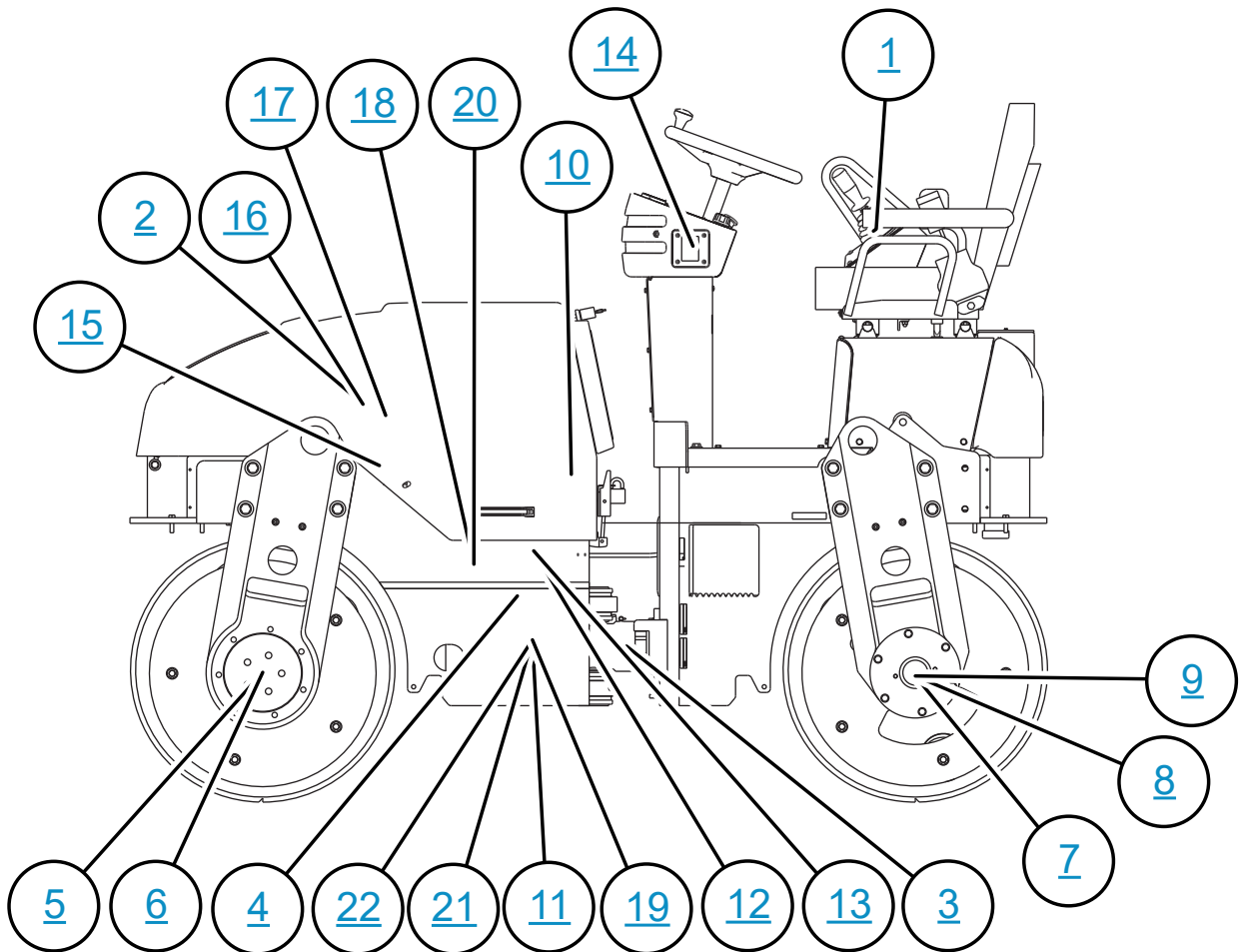
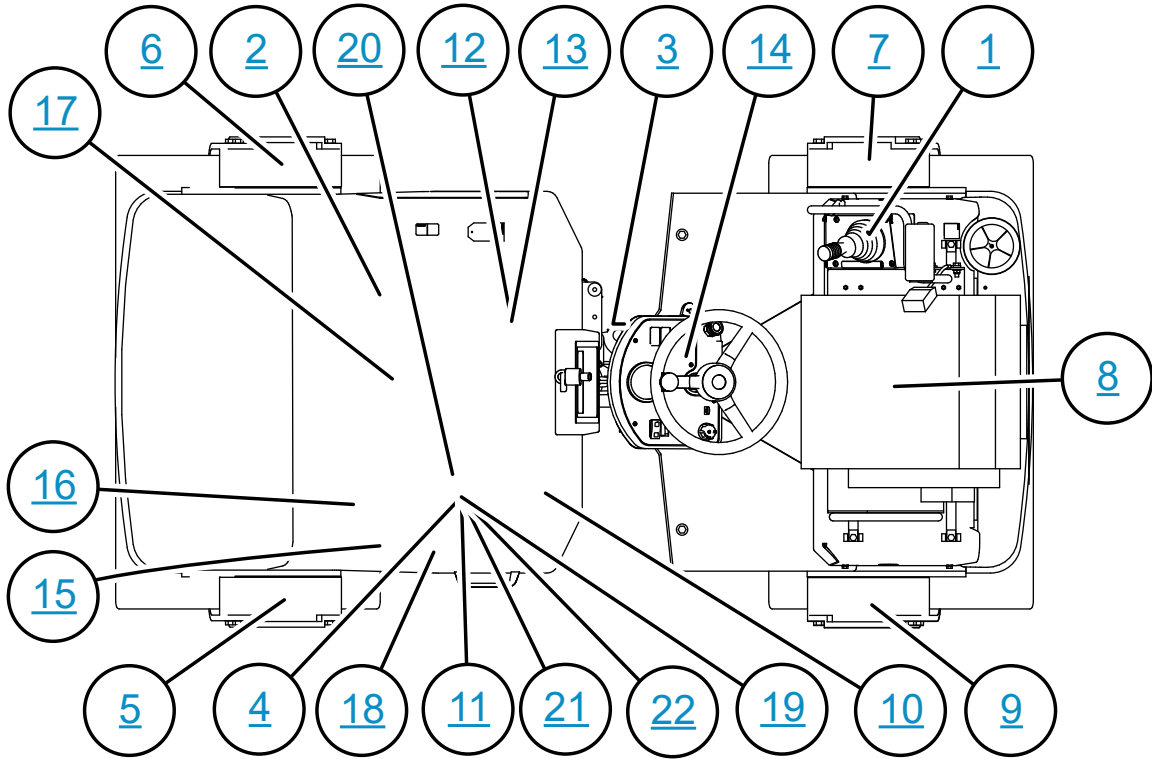
LEFT SIDE VIEW  
ENGINE COMPARTMENT

SEAT SWITCH SOLENOID  
307-OR  
200-BK

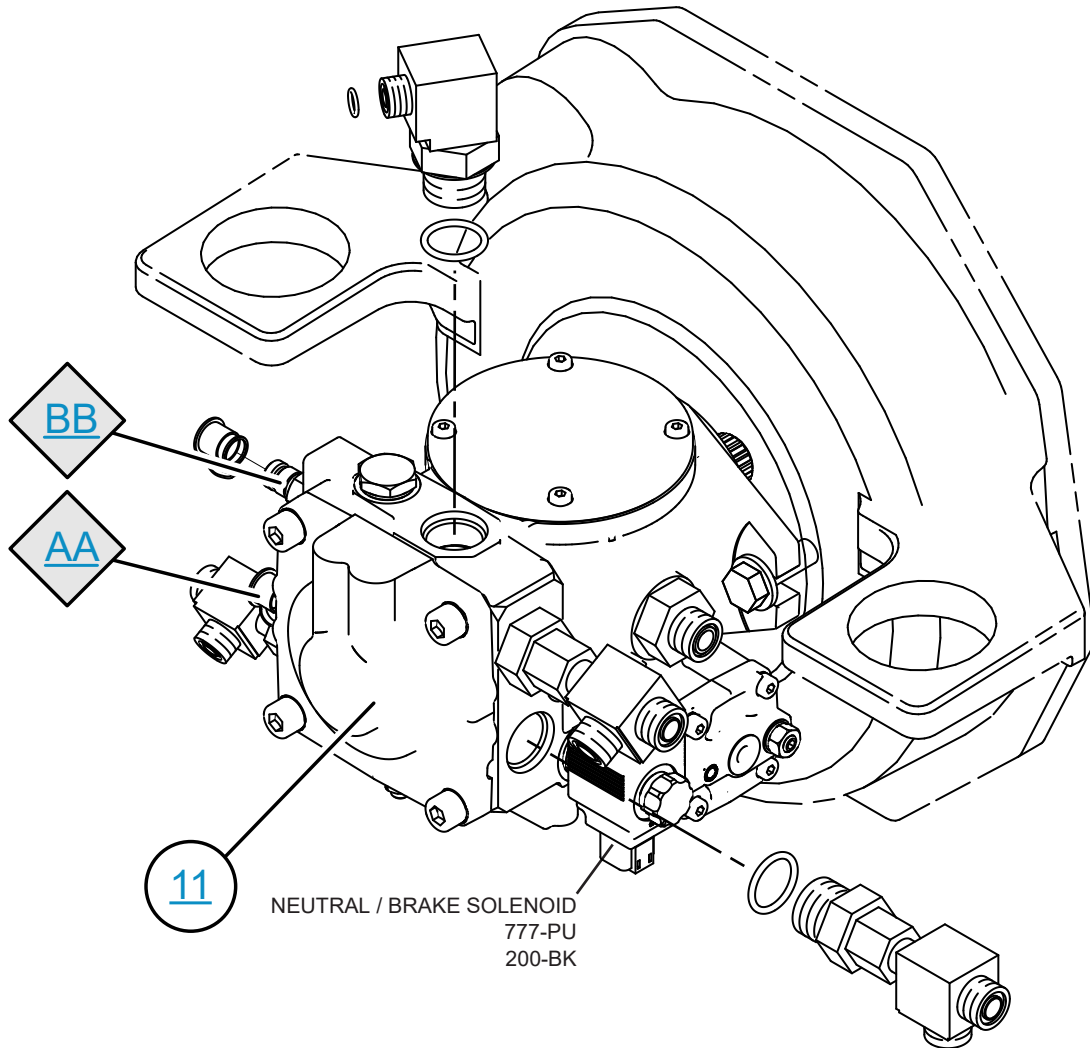


VIEW A-A

# MACHINE COMPONENT LOCATIONS



# PROPEL PUMP



# VIBRATORY VALVE

