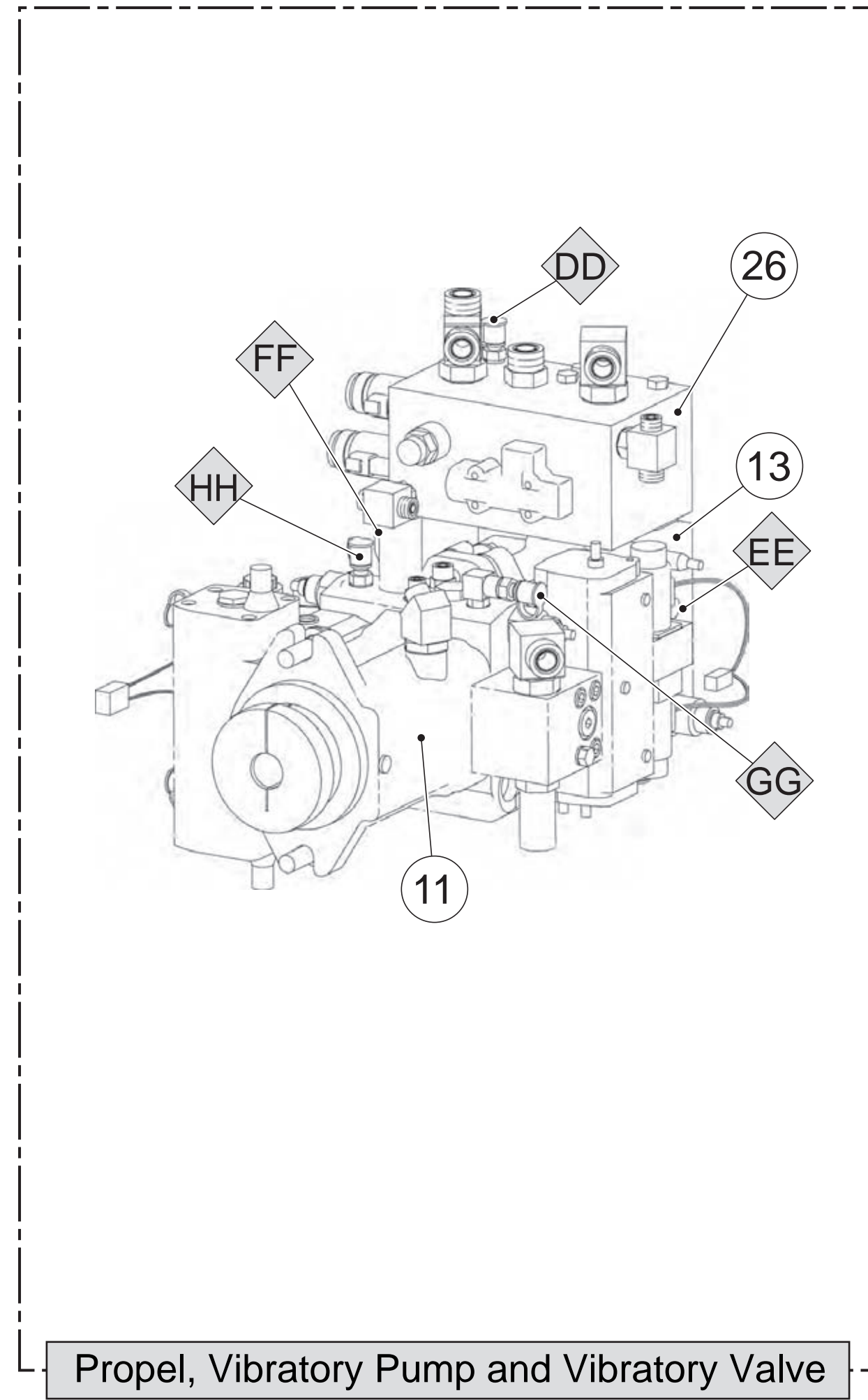
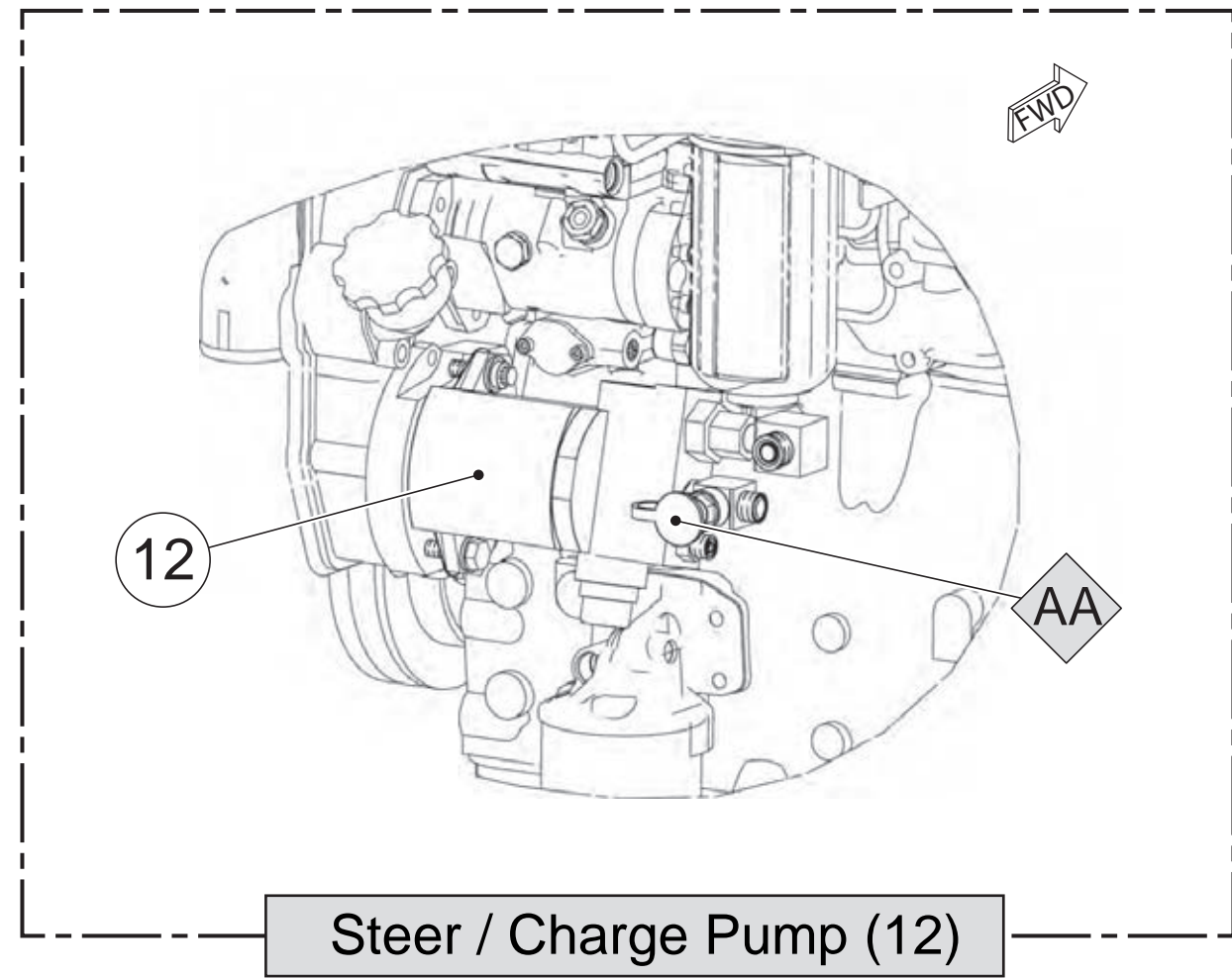
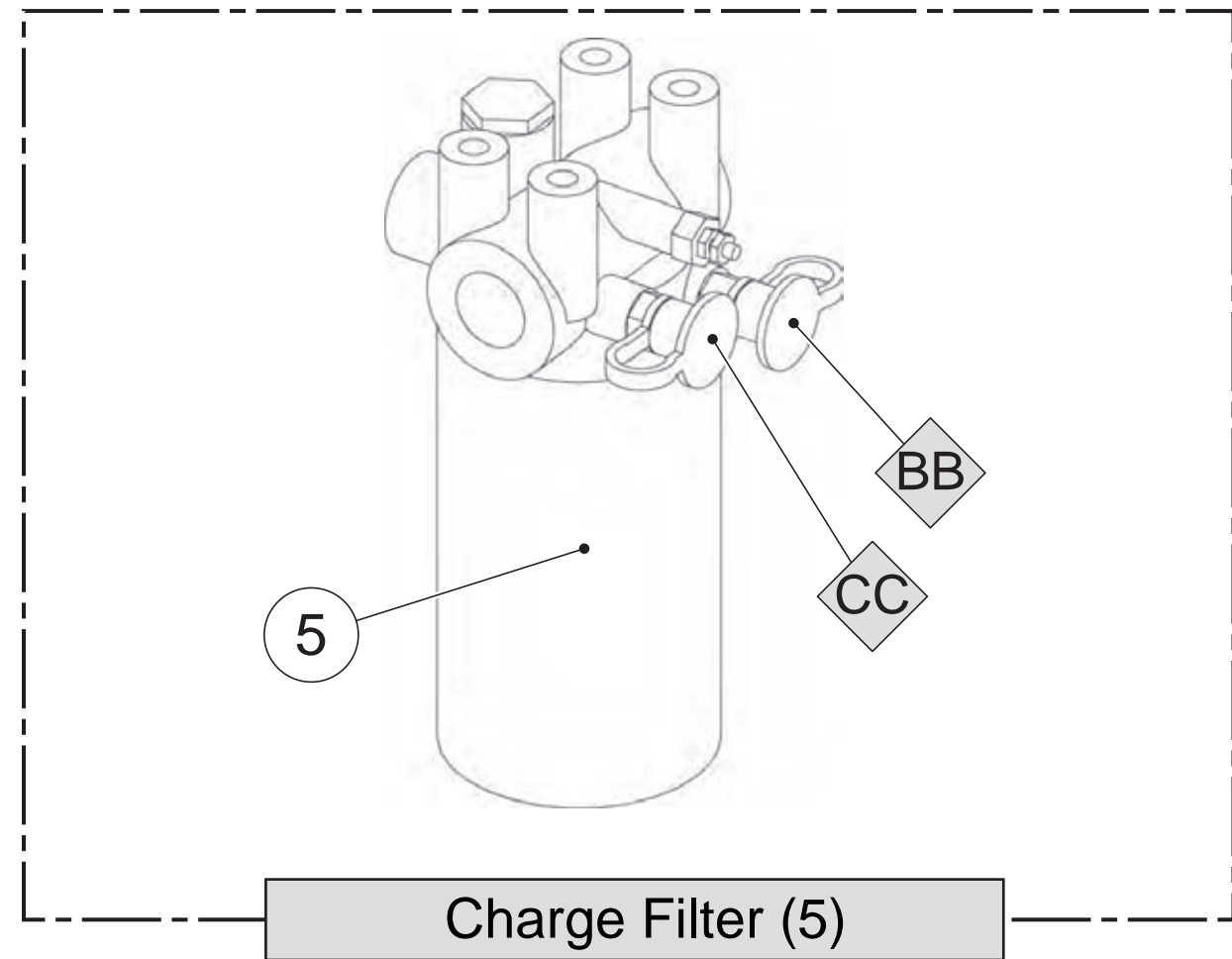


Component Locations			
Description	Part Number	Machine Location	Schematic Location
Caster - Rotation	222-4183	1	C-3, H-7
Cylinder Gp - Steering	196-3556	4	D-4, H-8
Cylinder Gp - Side Cutter	254-1714	2	C-10
Cylinder Gp - Offset	204-2135	3	C-12
Filter Gp - Charge	152-0712	5	C-3, H-8
Motor Gp - Fan	255-0107	6	C-2, H-7
Motor Gp - Front Left Propel	227-9277	7	D-13
Motor Gp - Front Propel	173-5253	7	G-6
Motor Gp - Front Right Propel	227-9277	8	E-13
Motor Gp - Front Vibratory	197-4465	8	E-7, G-2
Motor Gp - Rear Left Propel	227-9277	10	H-13
Motor Gp - Rear Propel	236-7616	9	I-6
Motor Gp - Rear Right Propel	227-9277	9	I-13
Motor Gp - Rear Vibratory	197-4465	10	E-7, G-3
Pump Gp - Propel	203-2074	11	E-6
Pump Gp - Propel (Split Drum)	227-9270	11	F-11
Pump Gp - Steer / Charge	255-0109	12	D-5, H-10
Pump Gp - Vibratory	243-0581	13	E-2, F-9
Steer Offset	213-6314	14	E-4, H-8
Strainer - Suction Filter	257-2022	15	C-5, G-10
Tank Gp - Hydraulic Oil	257-7430	16	B-3, C-5, G-10, H-7
Valve Gp - 2 Speed	189-8652	19	H-4
Valve Gp - Manual Brake Release	193-8530	17	F-4, H-11
Valve Gp - Bypass / Relief	162-2453	18	F-2, I-7
Valve Gp - Drum Offset	205-7186	21	B-12
Valve Gp - Side Cutter	209-6908	22	B-9
Valve Gp - Flushing (Propel Pump)	130-4816	11	H-10
Valve Gp - Flushing (Vibratory Pump)	251-3786	24	D-6, E-2
Valve Gp - Front Flow Divider	258-7080	27	E-11
Valve Gp - Rear Flow Divider	258-7080	27	I-11
Valve Gp - Vibratory	238-7614	26	D-2, E-9

Tap Locations Pressure, Sampling, and Sensor		
Tap Number	Description	Schematic Location
AA	Steer / Charge Pump	E-4, G-9
BB	SO2 Test Port	D-3, G-8
CC	Charge Filter	D-3, G-8
DD	Vibratory Valve (M)	E-1, E-9
EE	Vibratory Pump (M)	E-1, F-8
FF	Vibratory Pump (M)	F-1, G-8
GG	Propel Pump (M)	E-3, F-10
HH	Propel Pump (M)	F-3, F-11
I	Drum Offset Valve (X)	B-11
JJ	Edge Cutter Valve (X)	B-7
MM	Propel Servo Piston Test Port (X1)	E-4
NN	Propel Servo Piston Test Port (X2)	E-4



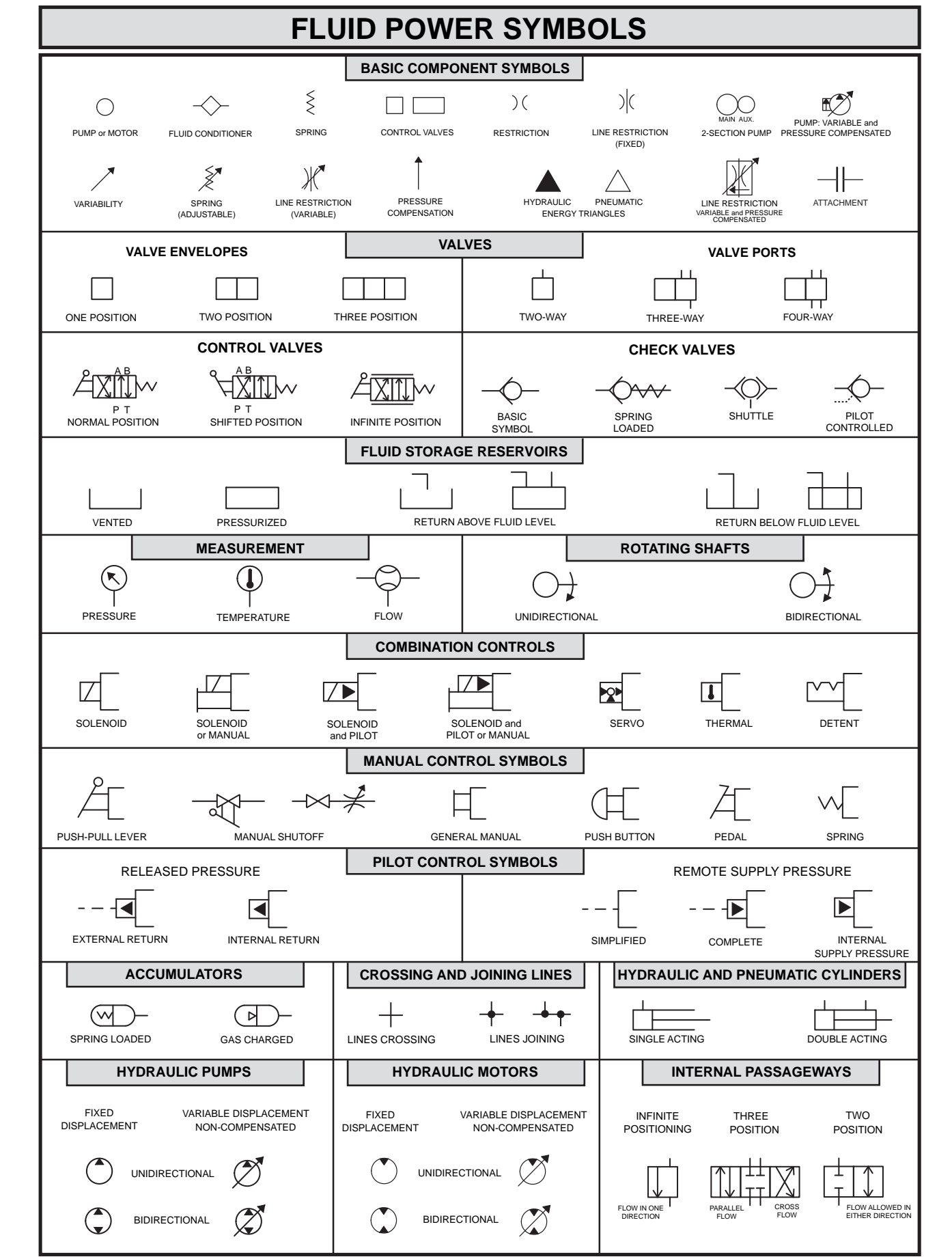
CATERPILLAR®

KENR3618-04
March 2007

Schematic

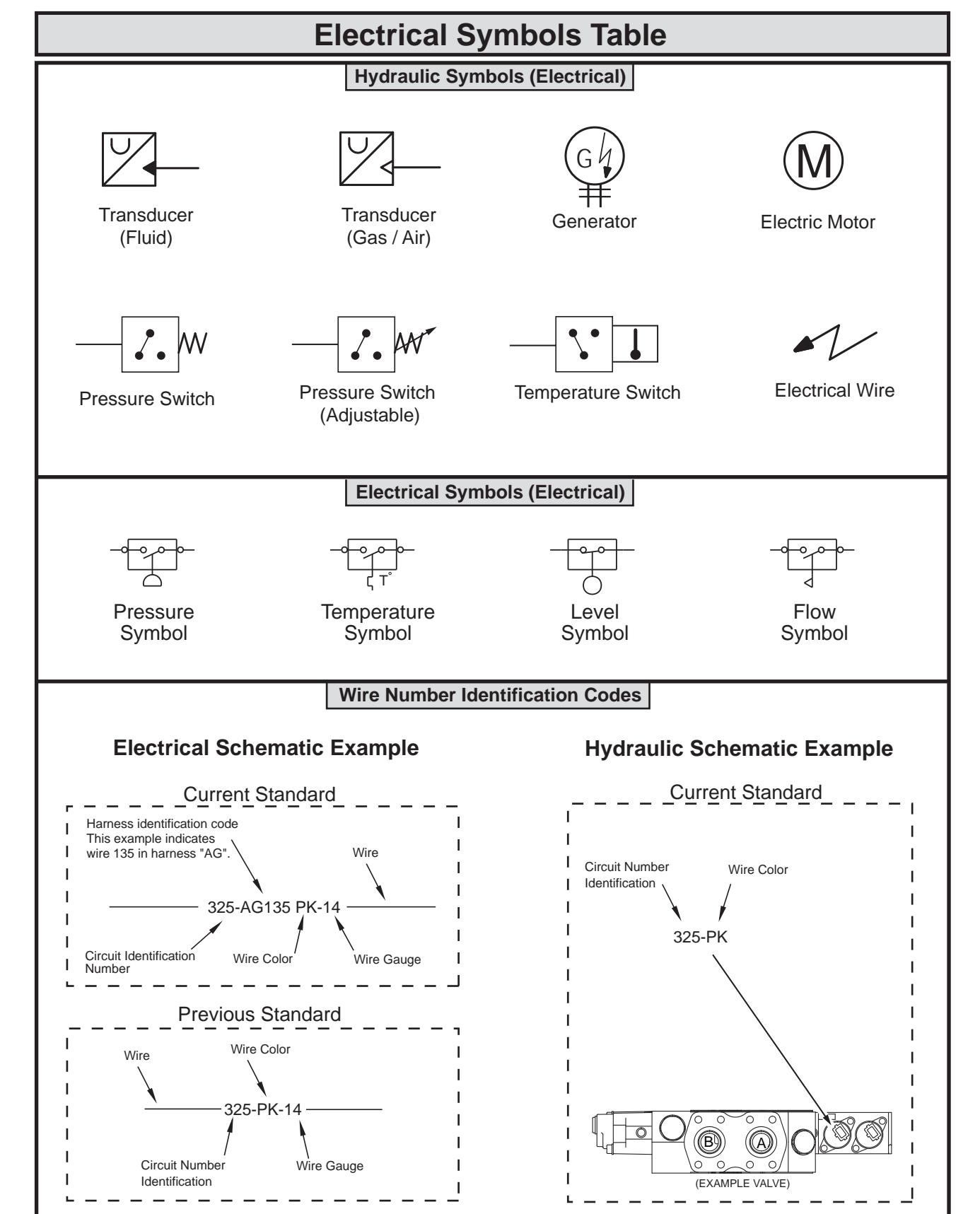
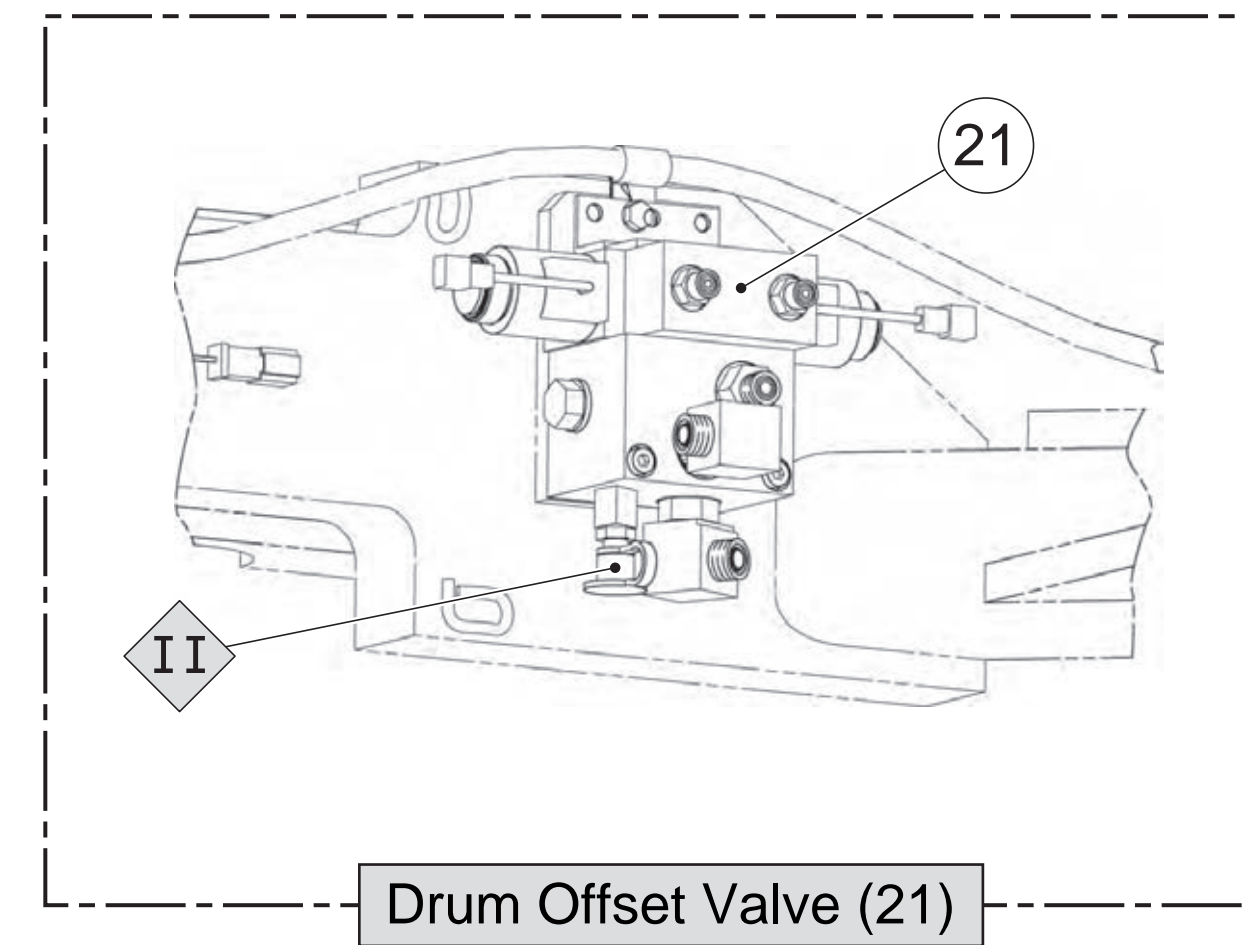
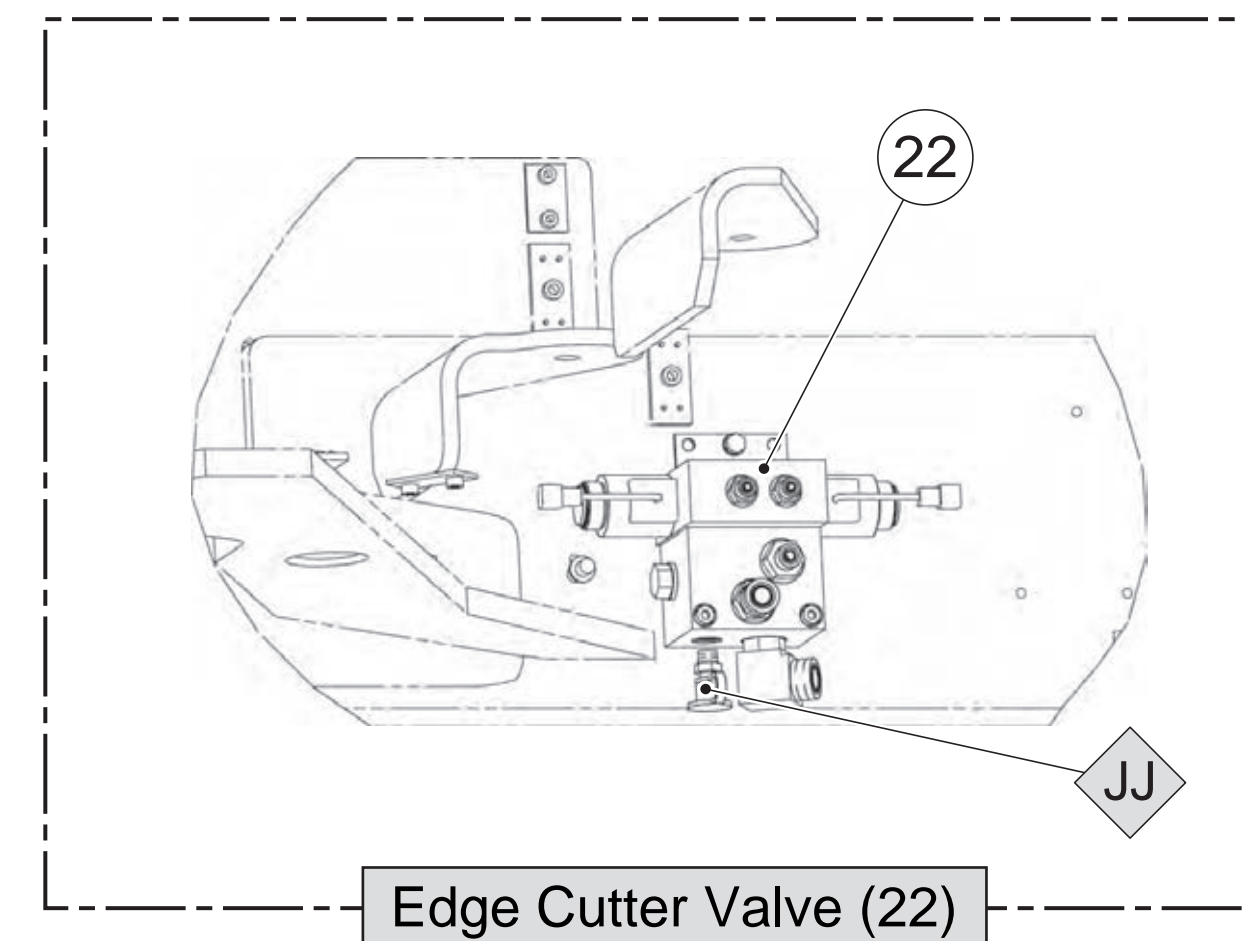
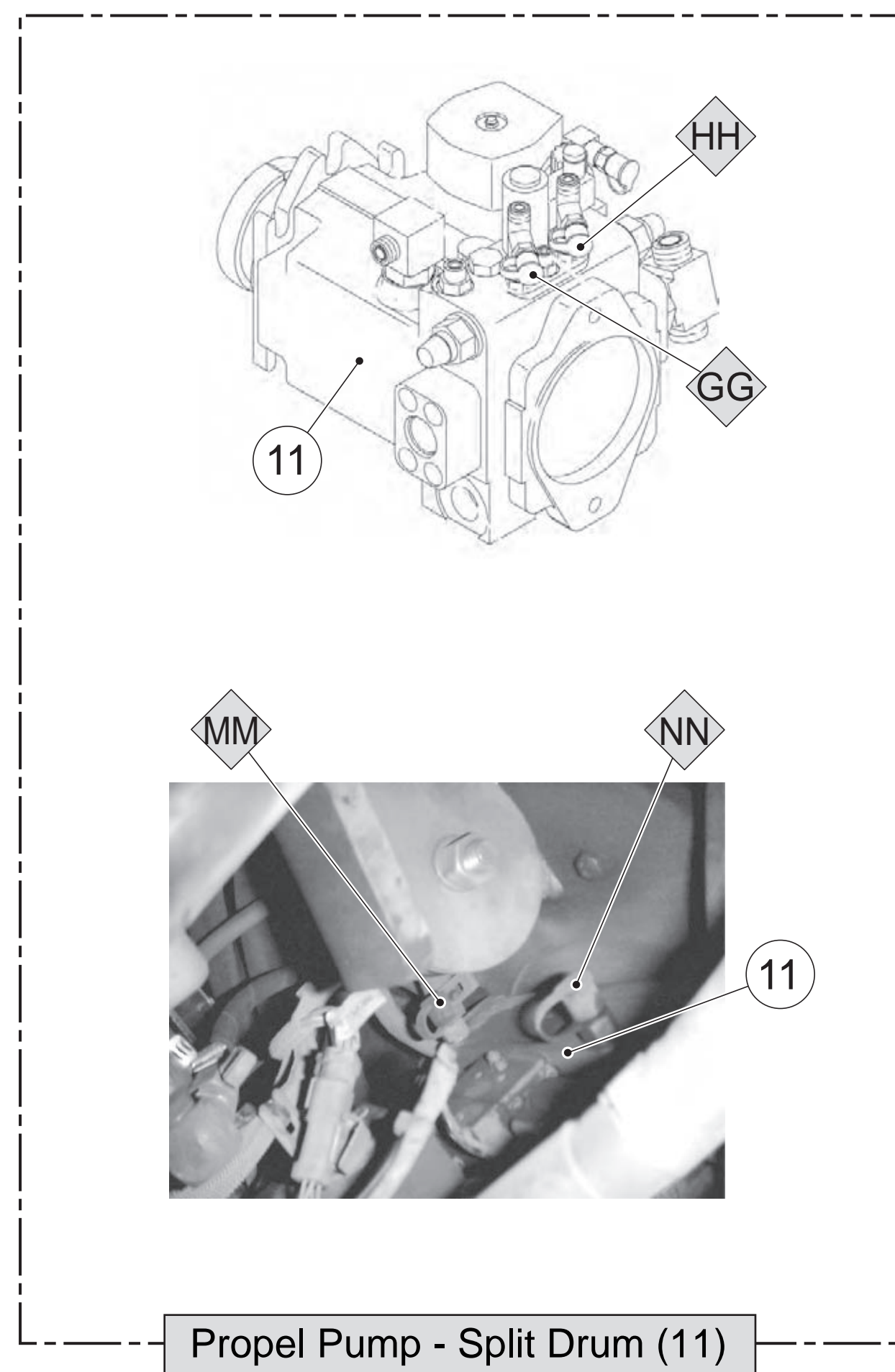
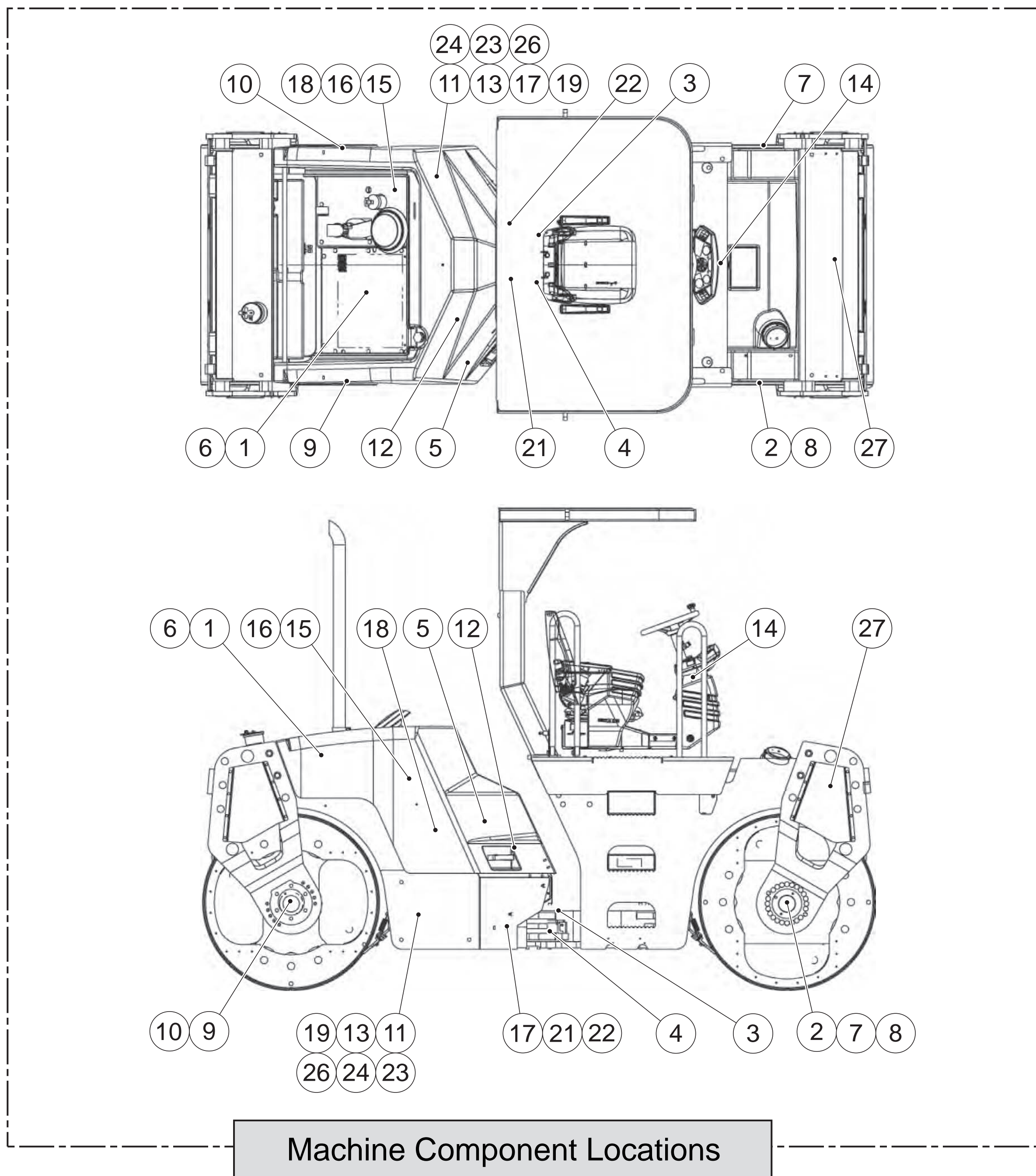
CB-534D Vibratory Compactor Hydraulic System

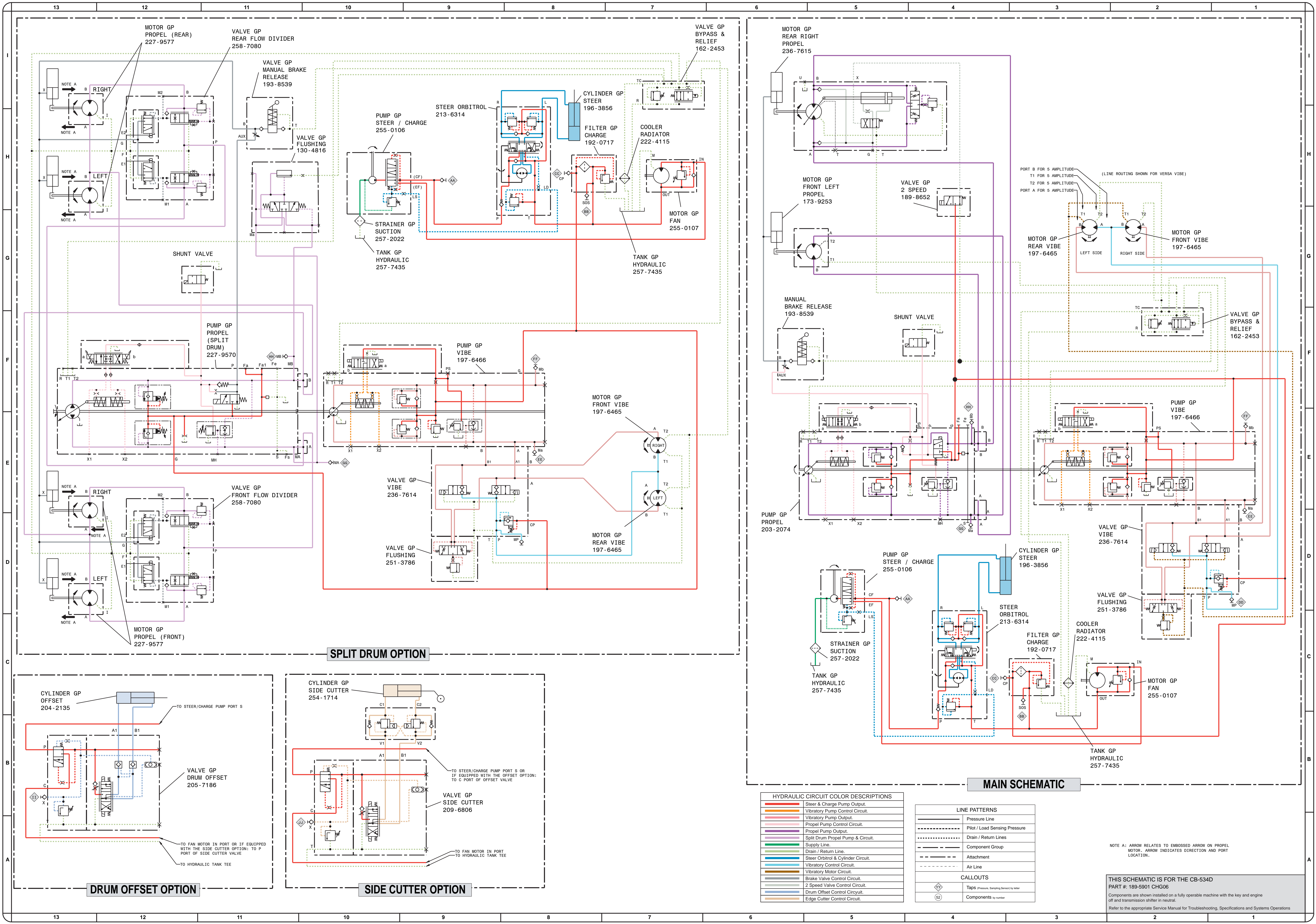
EAA1-UP
FEA1-UP
GCA1-UP
C2B1-UP
C4B1-UP
FGH1-UP
B5M1-UP
C8M1-UP



©2007 Caterpillar
All Rights Reserved

Printed in U.S.A.





KENR3618-04

30 Page, Color 2, (Dimensions: 39 inches x 28 inches)

SPLIT DRUM OPTION

MAIN SCHEMATIC

DRUM OFFSET OPTION

SIDE CUTTER OPTION