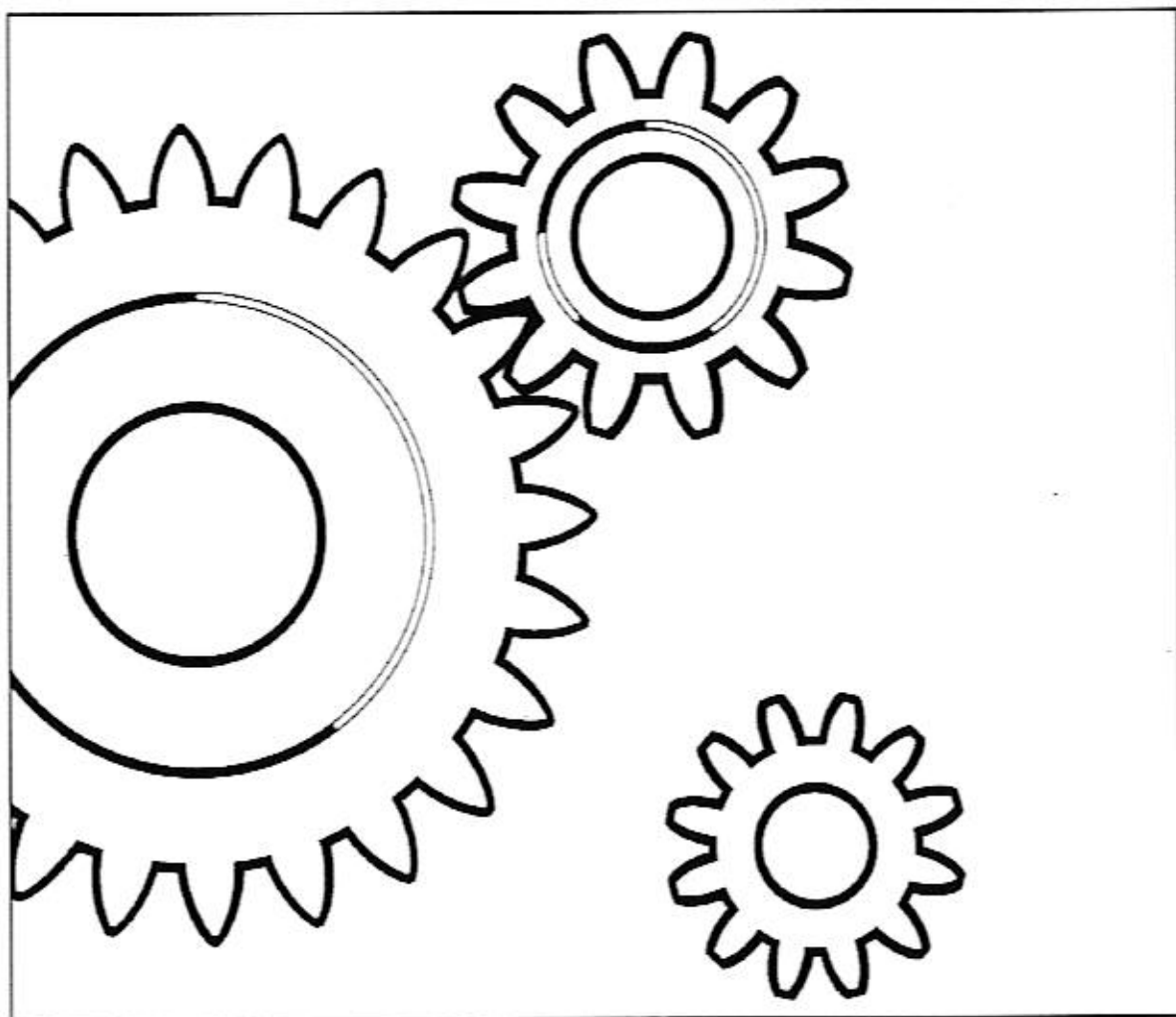


**DYNAPAC
CA250PD
SPARE PARTS
CATALOGUE
SCA250PD-US3EN1**



DYNAPAC

Box 504, SE-371 23 Karlskrona, Sweden
Phone: +46 455 30 60 00, Fax: +46 455 30 60 10
www.dynapac.com

Vibratory Roller CA250PD

Spare Parts Catalogue SCA250PD-US3EN1

Valid from roller serial number:

6592US5600

Diesel engines:

CUMMINS QSB 4.5C

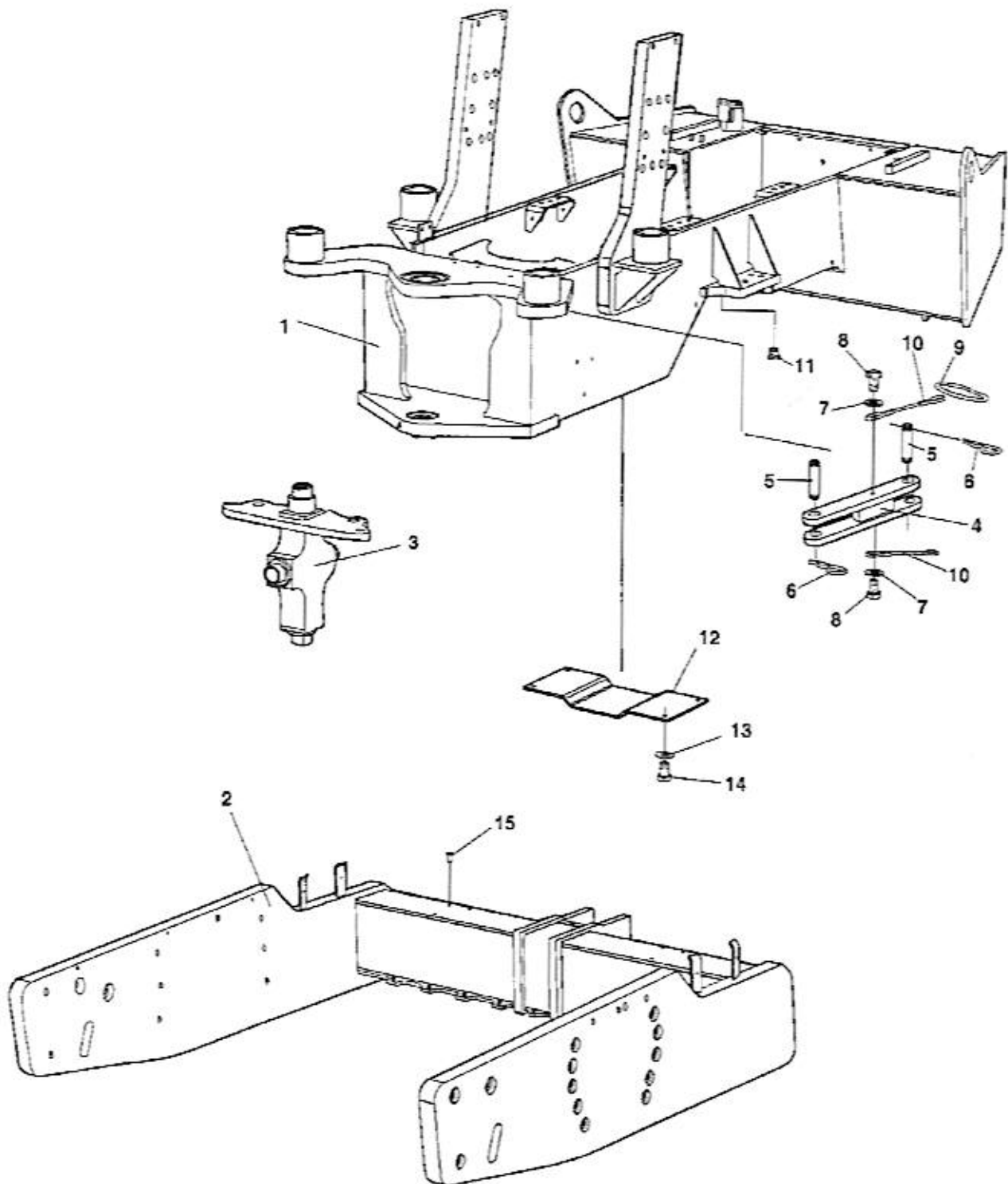
Published catalogue issues valid for these rollers:

<i>Catalogue</i>	<i>Issue date</i>	<i>Valid for serial numbers</i>
<i>SCA250PD-US3EN1</i>	<i>2007-06</i>	<i>See above</i>



Frame

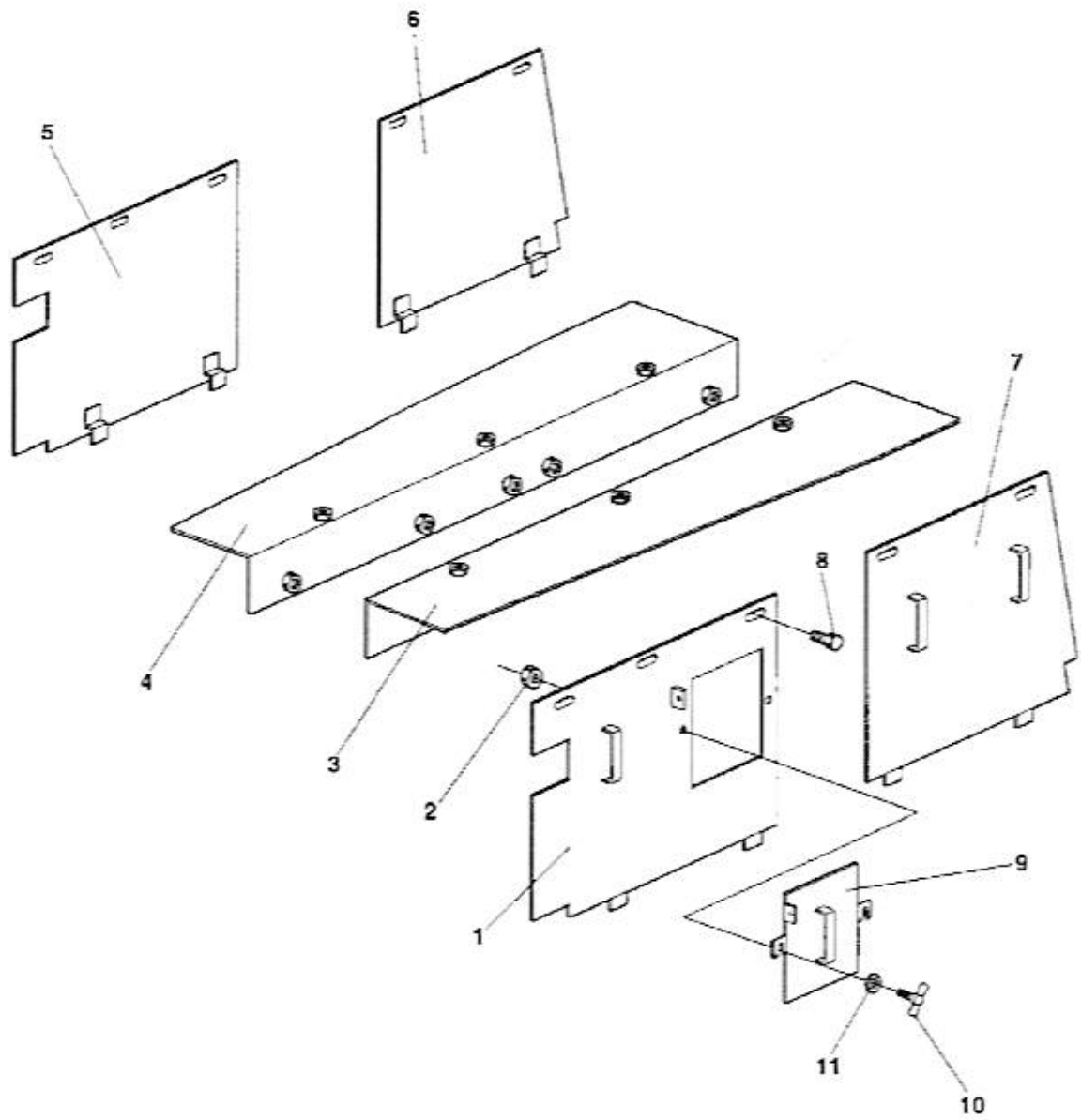
Ref. No.	Part No.	Rem.	Qty	Description	Code
10				Frames (Page 6)	
15				Side covers (Page 8)	Option
30				Scrapers and beam (Page 10)	
45				Scrapers, Urethan Rubber (Page 12)	Option
55				Scrapers, Spring Steel (Page 14)	Option
60				Hitch (Page 16)	
70				Structure (Page 18)	
80				Noise suppression (Page 20)	Option



Frames

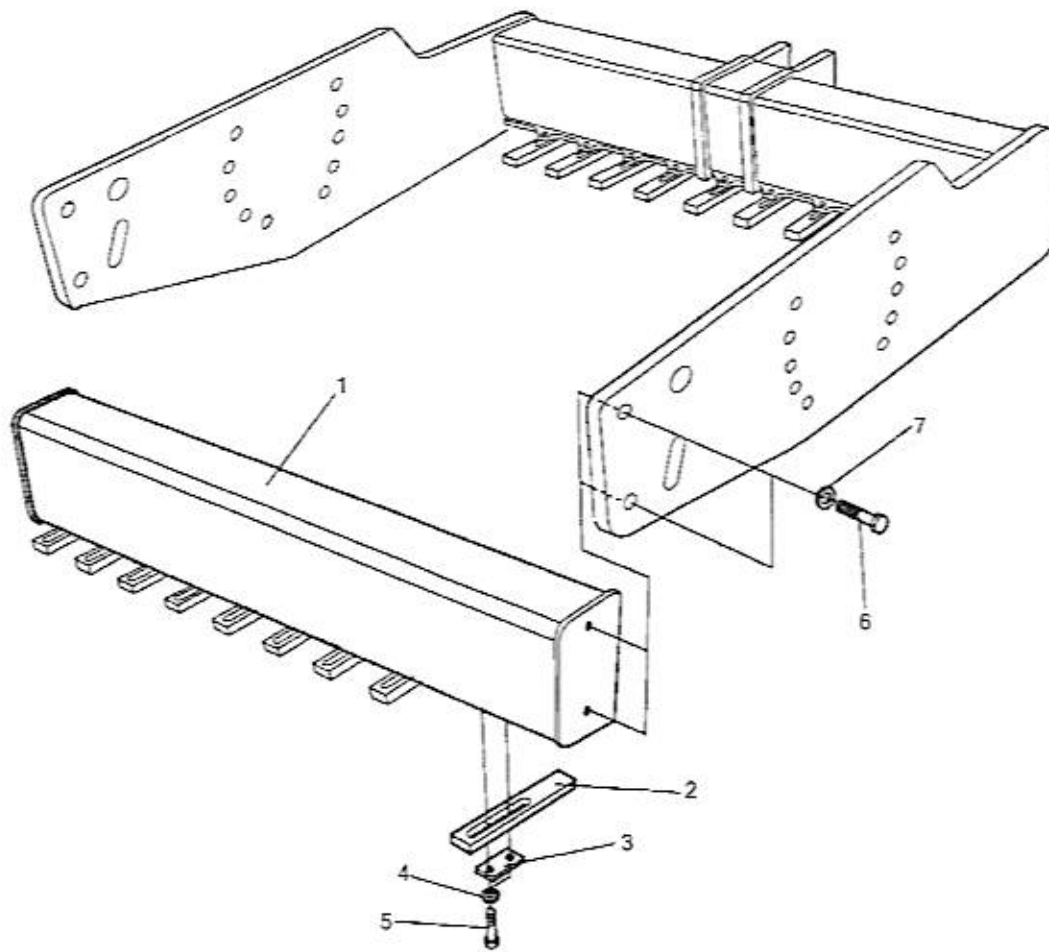
Ref. No.	Part No.	Rem.	Qty	Description	Code
1	392887		1	Tractor frame	
2	376701		1	Drum frame	
3			1	Hitch (Page 16)	
4	374744		1	Safety rod	
5	347119		2	Shaft	D
6	635061		3	Hair clip	D
7	904230		4	Washer	
8	500043		2	Screw	10,5x22x2 M10x16H 8,8
9	357488		1	Spring	
10	343775		2	Wire	
11	813391		1	Magnetic plug	D
12	372087		1	Protection plate	
13	904557		4	Washer	10,5x22x4
14	500029		4	Screw	M10-1,5x30 8.8
15	902919		6	Plug	

D)

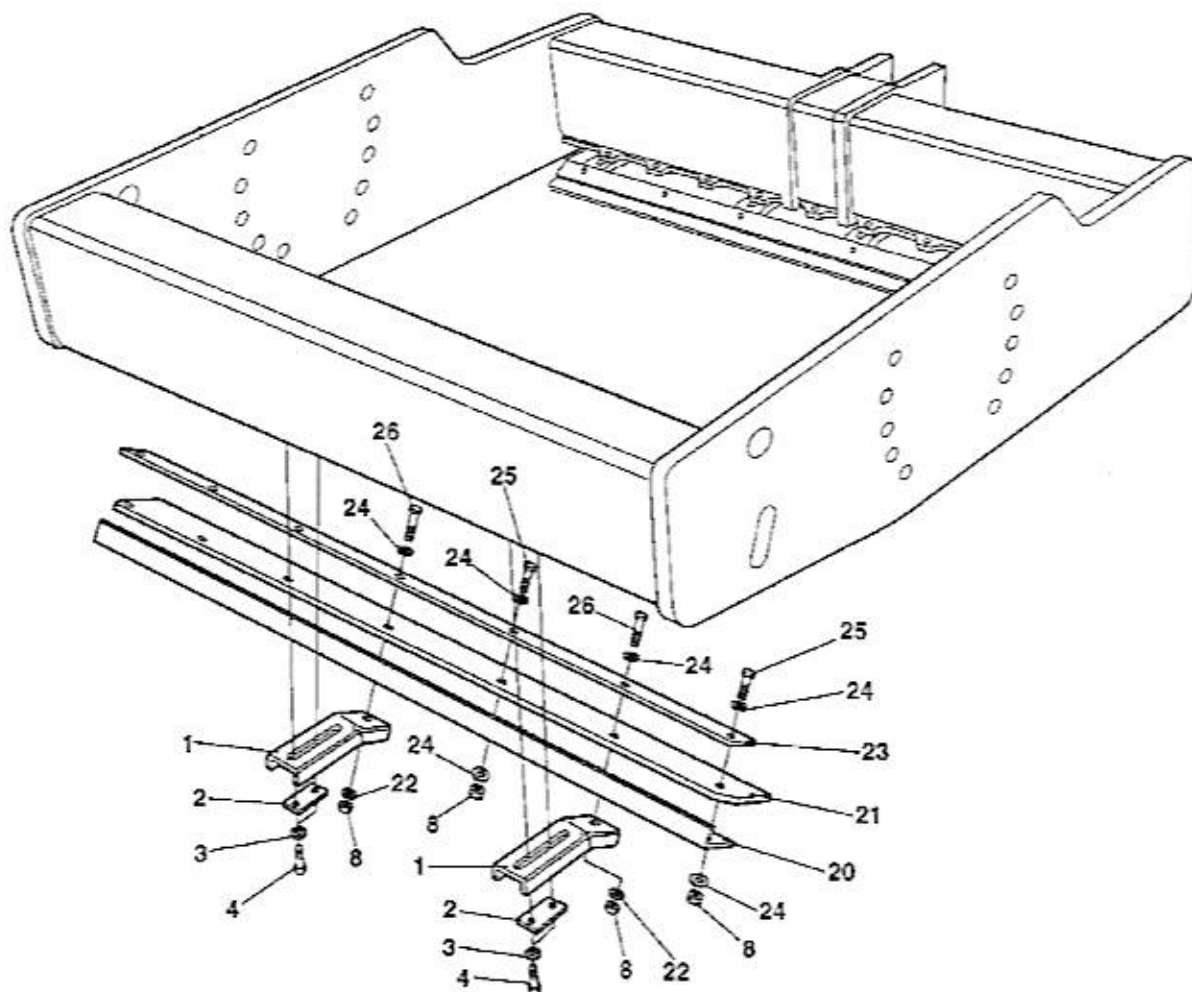


Side covers Option

Ref. No.	Part No.	Rem.	Qty	Description	Code
1	380053		1	Side cover, right	
2	586003		2	Lock nut	M8
3	387089		1	Holder, right	
4	387090		1	Holder, left	
5	380058		1	Side cover, left	
6	380057		1	Side cover, left	
7	380052		1	Side cover, right	
8	500053		16	Screw	M8-1,25x20 8.8
9	381033		1	Cover	
10	904718		2	Wing screw	
11	904640		18	Washer	8,4x22x3



Ref. No.	Part No.	Rem.	Qty	Description	Code
1	389907		1	Cross beam	
2	376551		18	Scrapers tooth	
3	376622		18	Holder	
4	904232		36	Washer	17x30x3
5	500165		36	Screw	M16-2,0x75 8.8
6	500147		4	Screw	M24x130
7	904234		4	Washer	25x45x4

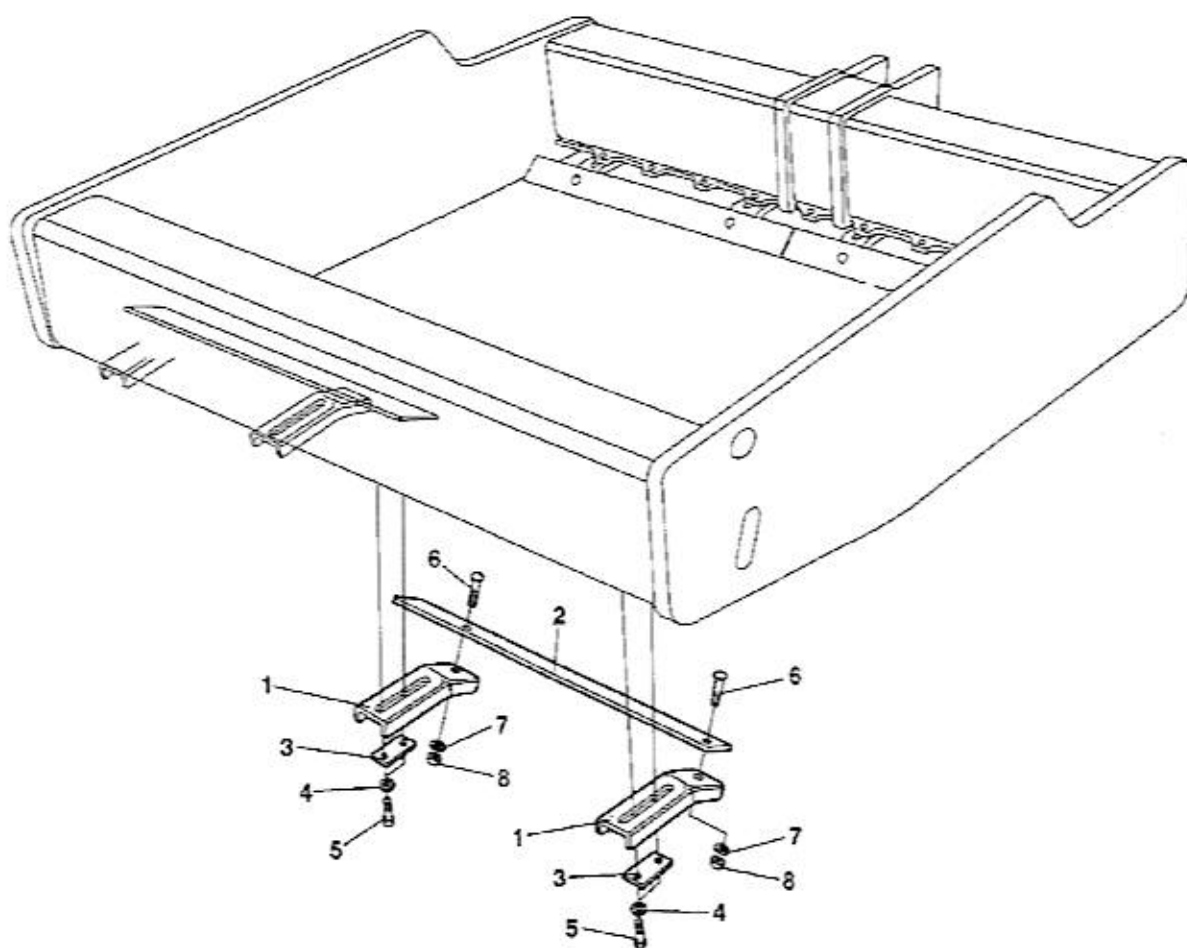


Scrapers, Urethan Rubber Option

Ref. No.	Part No.	Rem.	Qty	Description	Code
1	376819	A	8	Scraper bracket	
2	376622	A	8	Holder	
3	904232		16	Washer	17x30x3
4	500076		16	Screw	M16x55
8	586019		18	Lock nut	M12
20	376825	A	2	Scraper bracket	
21	358033	A	2	Scraper blade	B
22	904213		8	Washer	13x30x4
23	376826	A	2	Scraper bracket	
24	904231		28	Washer	13x24x2
25	500056		10	Screw	M12x45 8.8
26	500049		8	Screw	M12-1,75x60 8.8

A) Mounted on the front and rear of the drum.

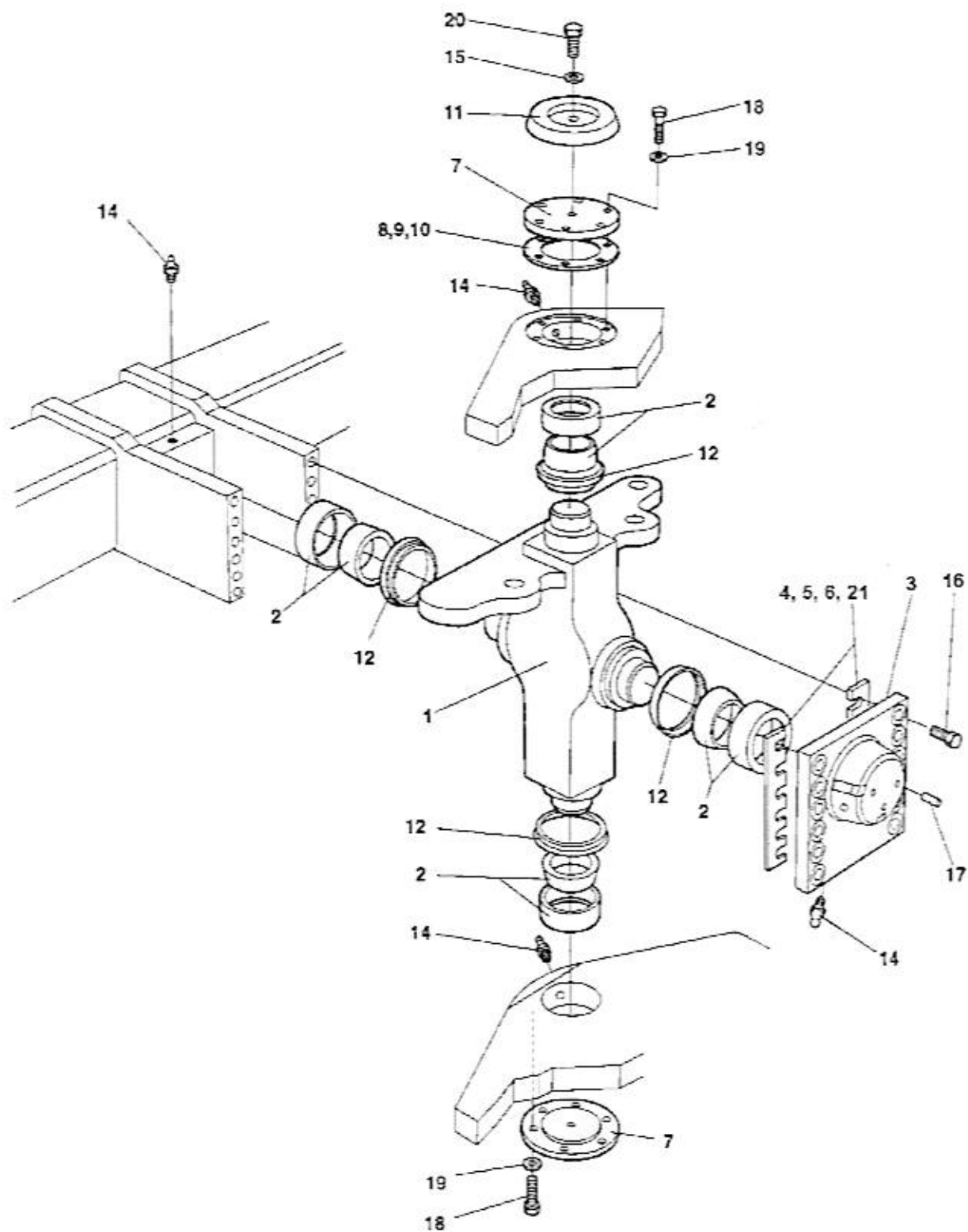
B)



Scrapers, Spring Steel Option

Ref. No.	Part No.	Rem.	Qty	Description	Code
1	376819		8	Scraper bracket	
2	376829		4	Scraper	
3	376622		8	Holder	
4	904232		16	Washer	17x30x3
5	500076		16	Screw	M16x55
6	791948	A	8	Bolt	M12x40H 8,8
7	904703		8	Washer	13x24x4
8	586019		8	Lock nut	M12

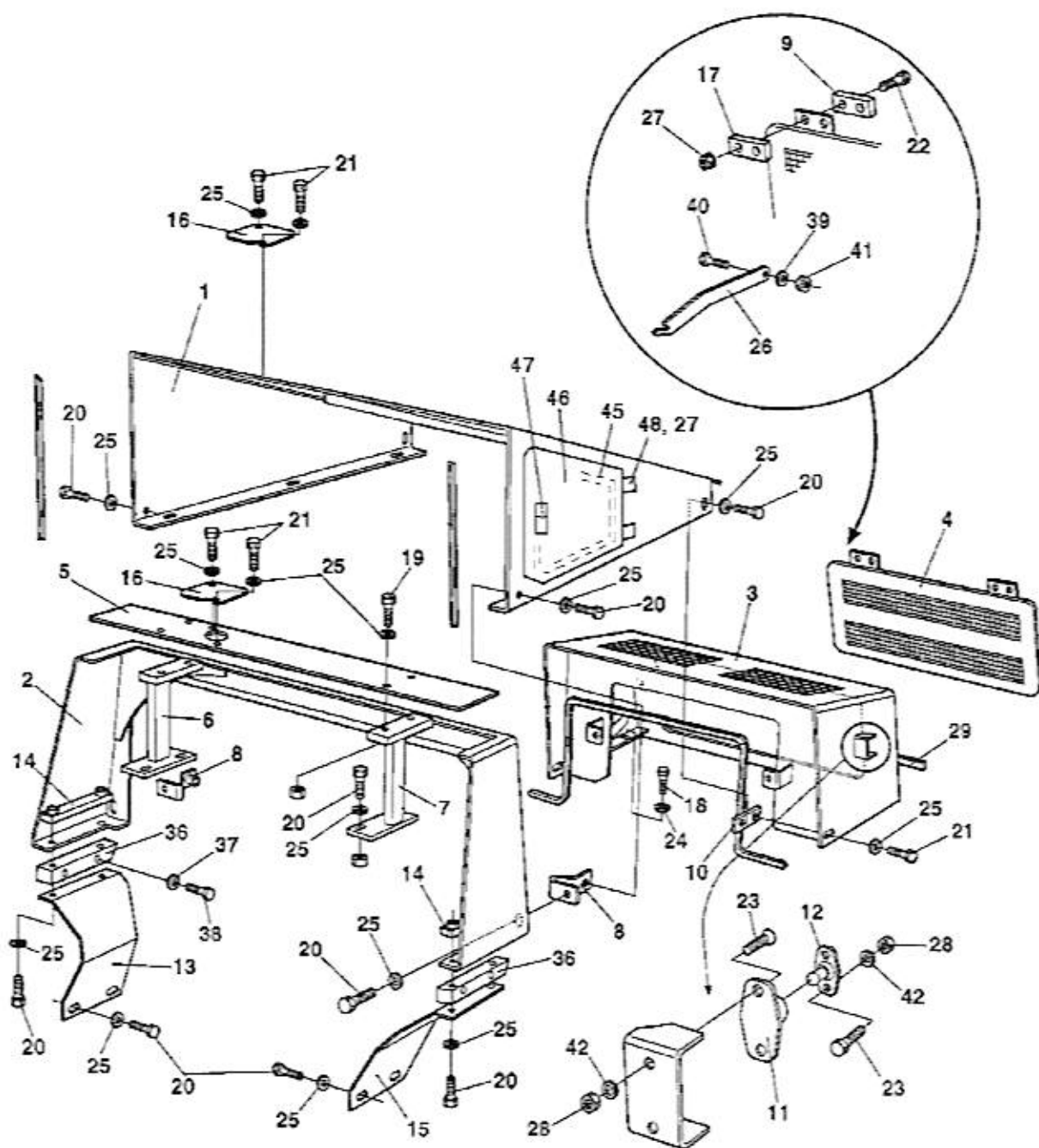
A) Cup square neck bolt.



Hitch

Ref. No.	Part No.	Rem.	Qty	Description	Code
1	374900		1	Hitch	
2	100040		4	Axial ball bearing	
3	373421		1	Bearing cover	D
4	345871	N		Shim	T=1,0 mm
5	345872	N		Shim	T=0,35 mm
6	345873	N		Shim	T=0,10 mm
7	337042		2	Bearing cover	
8	337045	N		Shim	T=1,0 mm
9	345874	N		Shim	T=0,35 mm
10	345875	N		Shim	T=0,10 mm
11	343159		1	Cover	
12	167032		4	Lip-type oil seal	
14	926214		4	Grease fitting	
15	904229		1	Washer	
16	500287		12	Screw	8,4x16x1,5
17	910995		3	Stop screw	
18	500037		12	Screw	M12-1,75x35 8,8
19	904231		12	Washer	13x24x2
20	500018		1	Screw	M8-1,25x12 8,8
21	380993	N		Shim	T = 2,0 mm
	384498	N		Shim	T = 0,15 mm

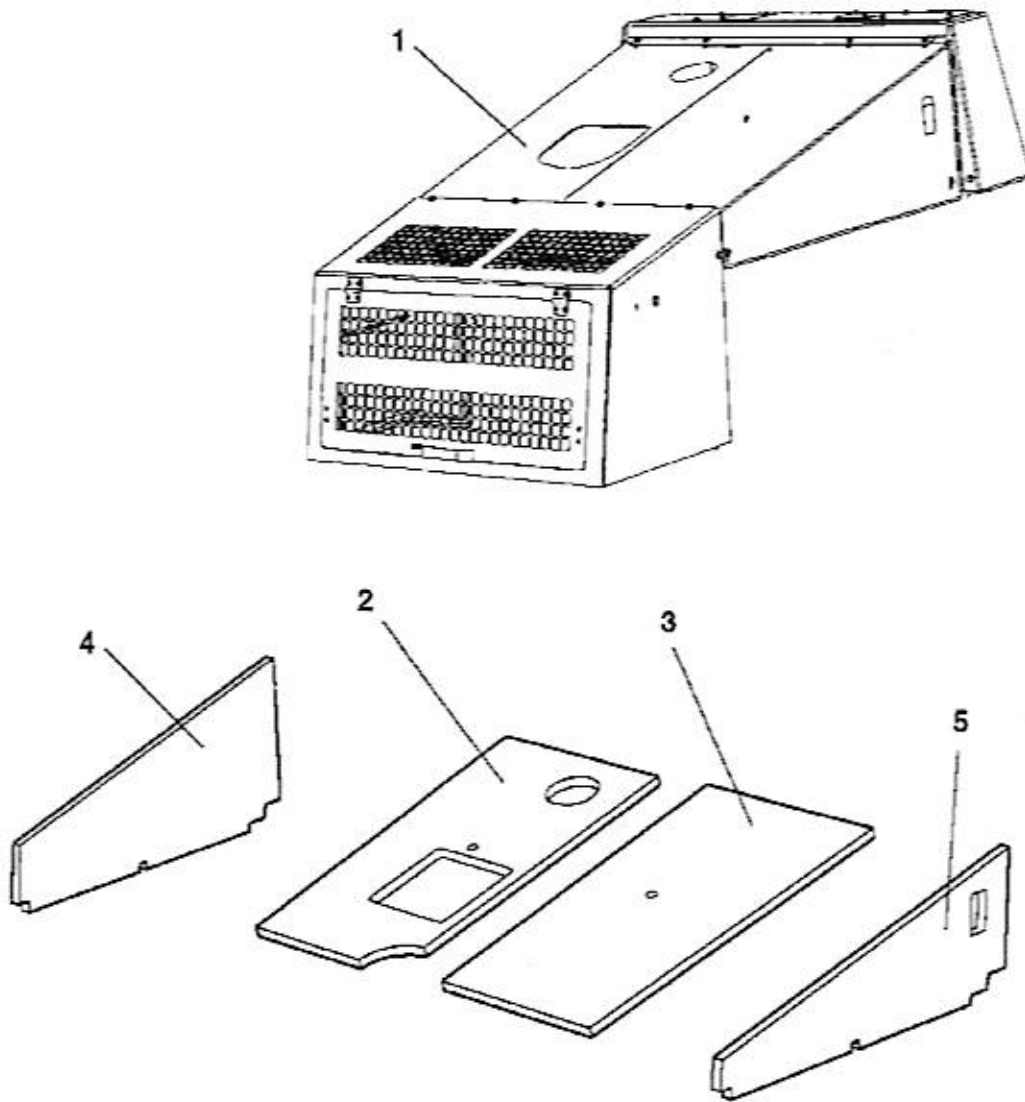
D)



Structure

Ref. No.	Part No.	Rem.	Qty	Description	Code
1	392911		1	Hood	
2	389882		1	Protection cover	
3	392912		1	Hood	
	791475	A	2	Grommet	
4	382406		1	Rear cover	
5	376354		1	Cover	
6	392786		1	Holder, right	
7	376349		1	Holder, left	
8	376366		2	Holder	
9	380755		2	Holder	
10	380109		2	Holder	
11	450066		2	Door bumper	D
12	450067		2	Door bumper	D
13	381348		1	Holder	
14	381330		2	Holder	
15	381347		1	Holder	
16	381297		2	Cover	
17	380012		2	Holder	
18	500031		4	Screw	M10-1,5x40 8,8
19	500047		4	Screw	M8-1,25x35 8,8
20	500022		20	Screw	M8-1,25x30 8,8
21	500053		10	Screw	M8-1,25x20 8,8
22	924875		4	Screw	M6x35
23	904504		8	Screw	M5 x 18
24	904557		4	Washer	10,5x22x4
25	904640		34	Washer	8,4x22x3
26	382411		1	Hook	
27	902285		8	Lock nut	M6
28	586001		8	Lock nut	M5
29	902379	B	1XL	Edge trim	
30	902379	C	1XL	Edge trim	
36	381989		2	Holder	
37	904231		4	Washer	13x24x2
38	500133		4	Screw	M12x70
39	904228		2	Washer	6,4x12x1,5
40	500040		1	Screw	M6-1x20 8,8
41	586002		1	Lock nut	M6
42	904281		8	Washer	5,3x10x1
45	202028	J	1XL	Edge trim	
46	393857		1	Cover	
47	792549		1	Lock	
48	513012		4	Screw	M6x20 10,9

- A) With membrane
- B) L=0,330 m
- C) L=0,550 m
- J) L=1,120 m
- D)



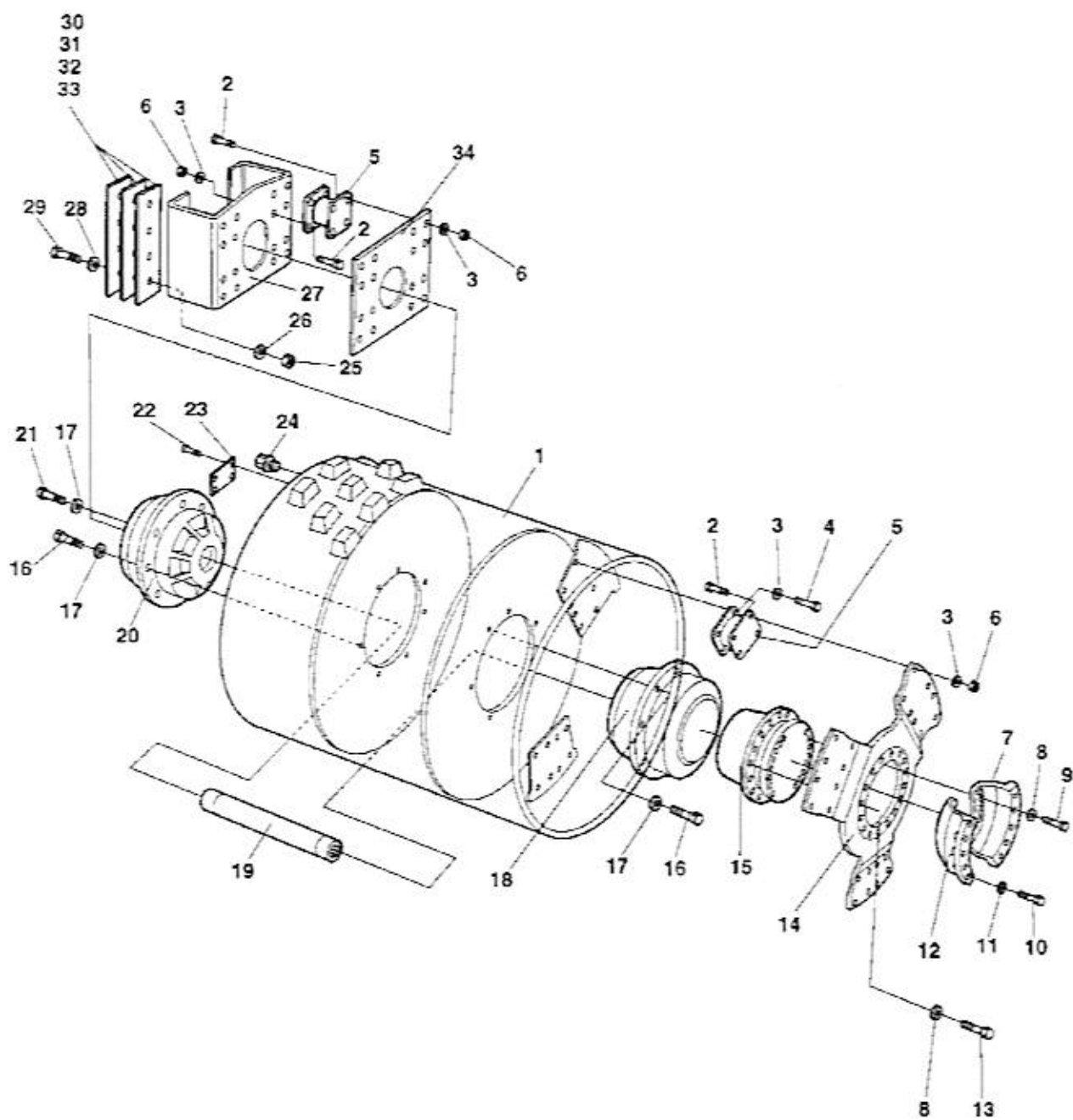
Noise suppression Option

Ref. No.	Part No.	Rem.	Qty	Description	Code
1		A	1	Hood	
2	393933	A	1	Noise suppression	
3	393932	A	1	Noise suppression	
4	390481	A	1	Noise suppression	
5	393934	A	1	Noise suppression	

A) Design does not always match picture

Drum

Ref. No.	Part No.	Rem.	Qty	Description	Code
10				Drum (Page 24)	
20				Drum cartridge (Page 26)	Drive side
30				Drum cartridge (Page 28)	Vibration side



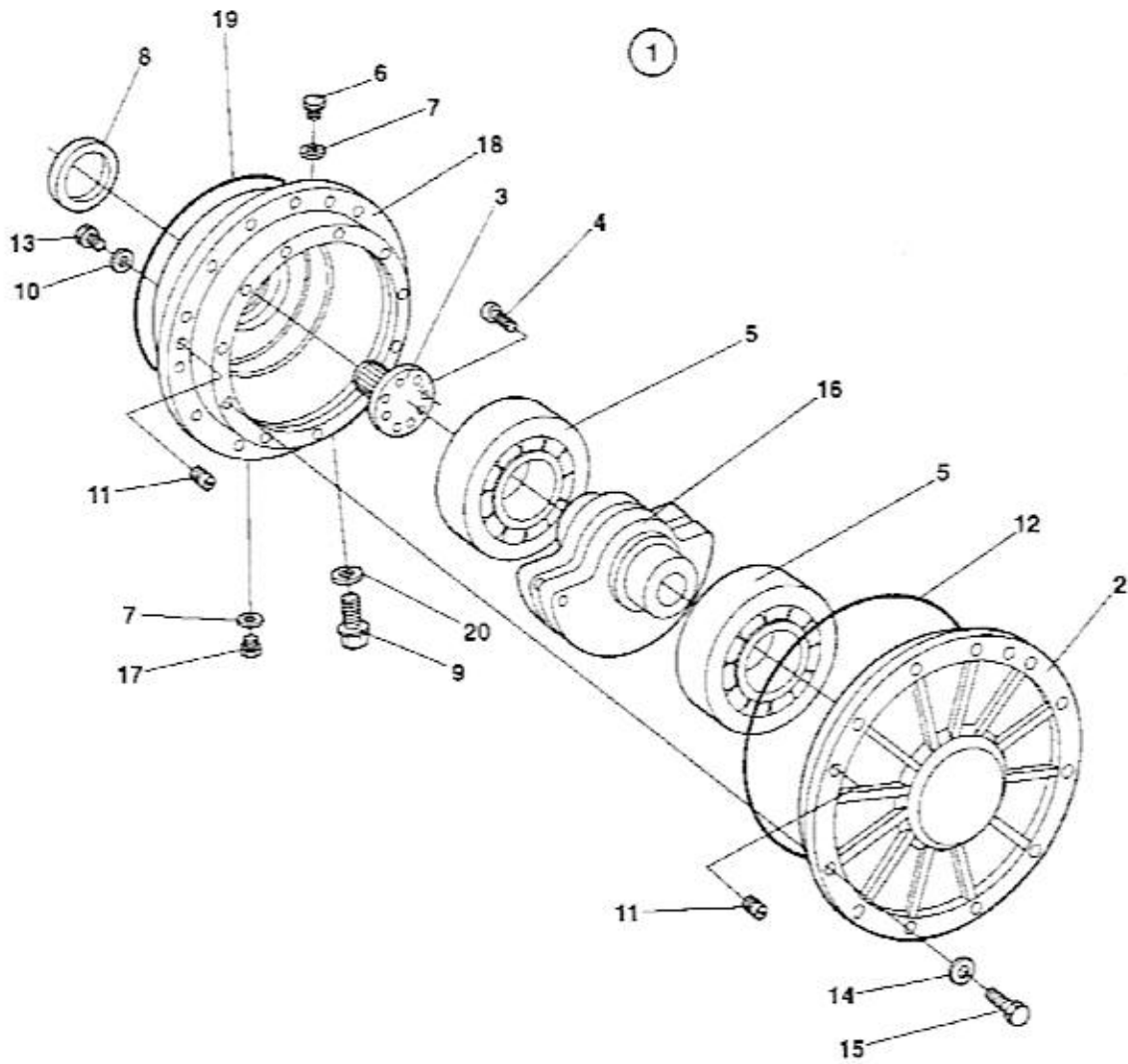
Drum

Ref. No.	Part No.	Rem.	Qty	Description	Code
1	374927		1	Drum	
2	500194		56	Screw	M12x40H 8.8
3	904231		80	Washer	13x24x2
4	500051		24	Screw	M12-1,75x25 8,8
5	801187		10	Shock absorber	
6	570007		56	Lock nut	M12
7	373442	A	1	Gear holder	
8	904233		32	Washer	21x36x3
9	903919		16	Screw	
10	500146		10	Screw	M24-3,0x110 8,8
11	904234		14	Washer	25x45x4
12	373443	B	1	Gear holder	
13	903281		16	Screw	
14	372236		1	Drive disc	
15	380462		1	Drum gear	
16	500082		23	Screw	M16x70
17	904232		26	Washer	17x30x3
18			1	Drum cartridge (Page 26)	Drive side
19	349682		1	Drive shaft	
20			1	Drum cartridge (Page 28)	Vibration side
21	384121		1	Air breather screw	
22	527002		4	Drive screw	
23	343801		1	Sign plate	
24	232210		1	Plug	
25	925867		6	Nut	M20
26	904233		6	Washer	21x36x3
27	355676		1	Bracket	
28	904233		12	Washer	21x36x3
29	928850		6	Screw	M20-2,5x120 10,9
30	345678		N	Shim	T = 1,5 mm
31	345679		N	Shim	T = 3 mm
32	345884		N	Shim	T = 6 mm
33	345885		N	Shim	T = 8 mm
34	343322		1	Holder plate	

A) Right

B) Left

B)



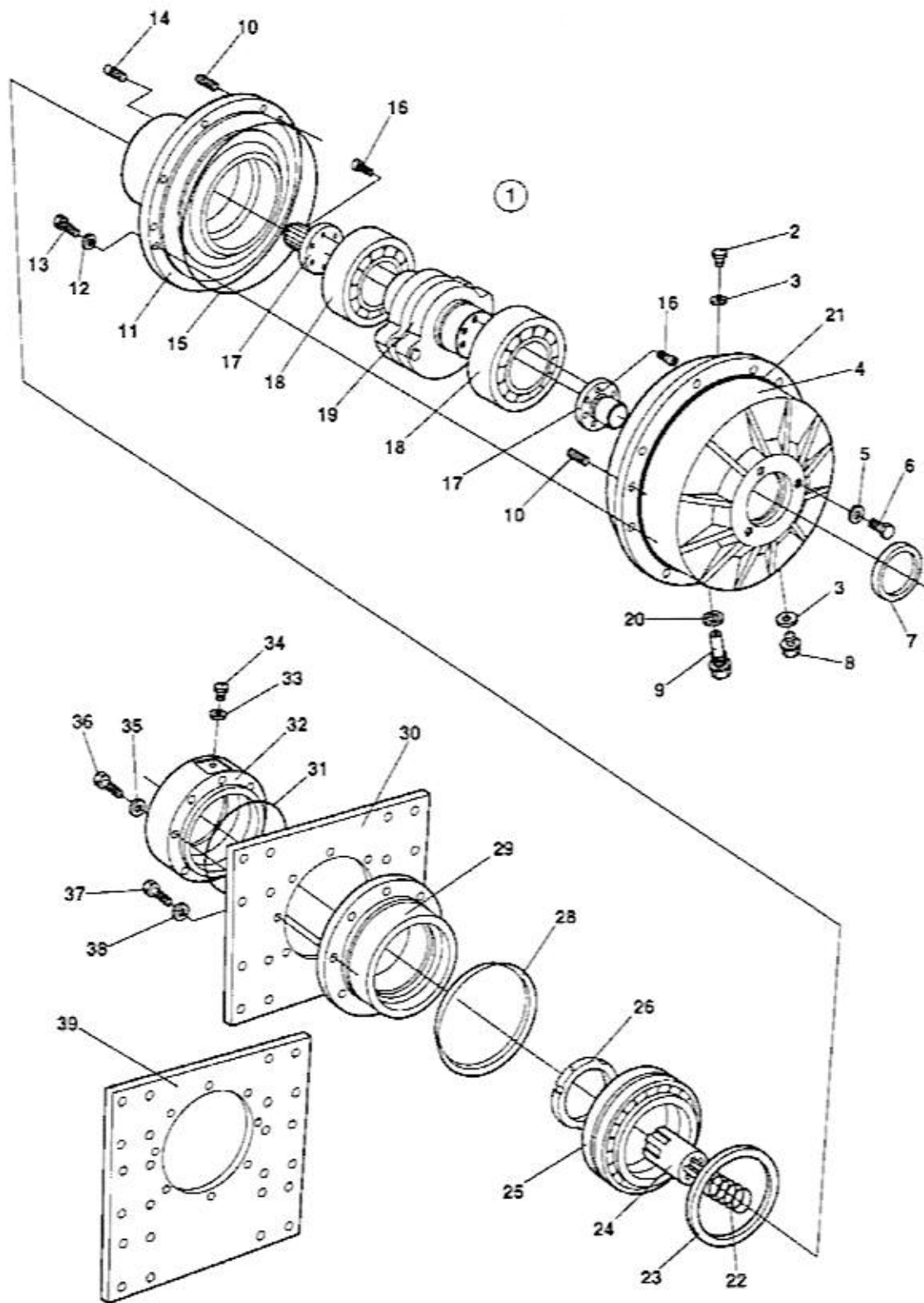
Drum cartridge Drive side

Ref. No.	Part No.	Rem.	Qty	Description	Code
1	945585		1	Drum cartridge	
2	379876		1	.Bearing housing outer	
3	380018		1	.Splined shaft	
4	791156		8	.Screw M10-1,5x55 12,9	
5	390896		2	.Spherical roller bearing	D
6	343744		1	.Magnetic plug	M30 D
7	162017		2	.Seal ring	M30 D
8	900782		1	.Seal ring	D
9	381634		1	.Plug	
10	162027		3	.Sealing	M12 D
11	900775		6	.Plug	
12	900776		1	.O-ring	D
13	500163		3	.Screw	M12x16
14	904232		12	.Washer	17x30x3
15	500082		12	.Screw	M16x70
16	381760		1	.Eccentric shaft	
17	232210		1	.Plug	
18	379880		1	.Bearing housing inner	
19	904737		1	.O-ring	
20	162011		1	.Washer, sealing	D

D)

Drum cartridge Vibration side

18388



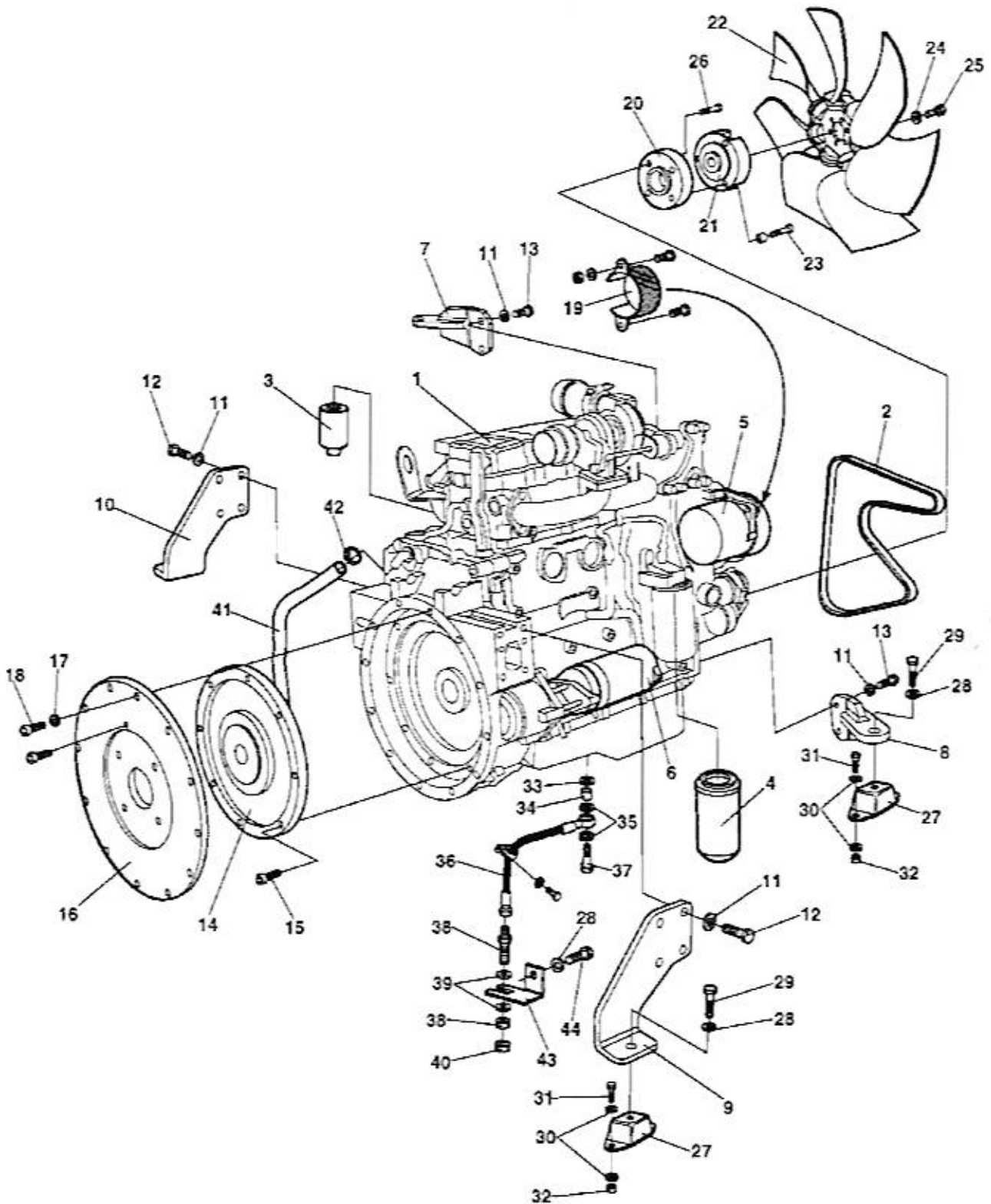
Drum cartridge Vibration side

Ref. No.	Part No.	Rem.	Qty	Description		Code
1	945589		1	Drum cartridge		
2	343744		1	.Magnetic plug	M30	D
3	162017		2	.Seal ring	M30	D
4	379880		1	.Bearing housing inner		
5	162027		3	.Sealing	M12	D
6	500163		3	.Screw	M12x16	
7	900782		1	.Seal ring		D
8	232210		1	.Plug		
9	381634		1	.Plug		
10	900775		6	.Plug		
11	379878		1	.Bearing housing outer		
12	904232		12	.Washer	17x30x3	
13	500082		12	.Screw	M16x70	
14	903189		3	.Stop screw		
15	900776		1	.O-ring		D
16	791156		16	.Screw M10-1,5x55 12,9		
17	380018		2	.Splined shaft		
18	390896		2	.Spherical roller bearing		D
19	381760		1	.Eccentric shaft		
20	162011		1	.Washer, sealing		D
21	904737		1	O-ring		
22	349715		1	Spring		
23	167023		1	Seal ring		D
24	381027		1	Splined sleeve		
25	116041		1	Taper roller bearing		D
26	390897		1	Shaft nut		
28	929447		1	V-ring		D
29	343318		1	Bearing housing		D
30	343322		1	Holder plate		
31	160105		1	O-ring 70		D
32	390771		1	Motor adapter		
33	162018		1	Sealing		D
34	370231		1	Plug		
35	904231		4	Washer	13x24x2	
36	500196		4	Screw	M12-1,75x80 8.8	
37	500082		8	Screw	M16x70	
38	384114		8	Spacer		
39				Not used on this model		

D)

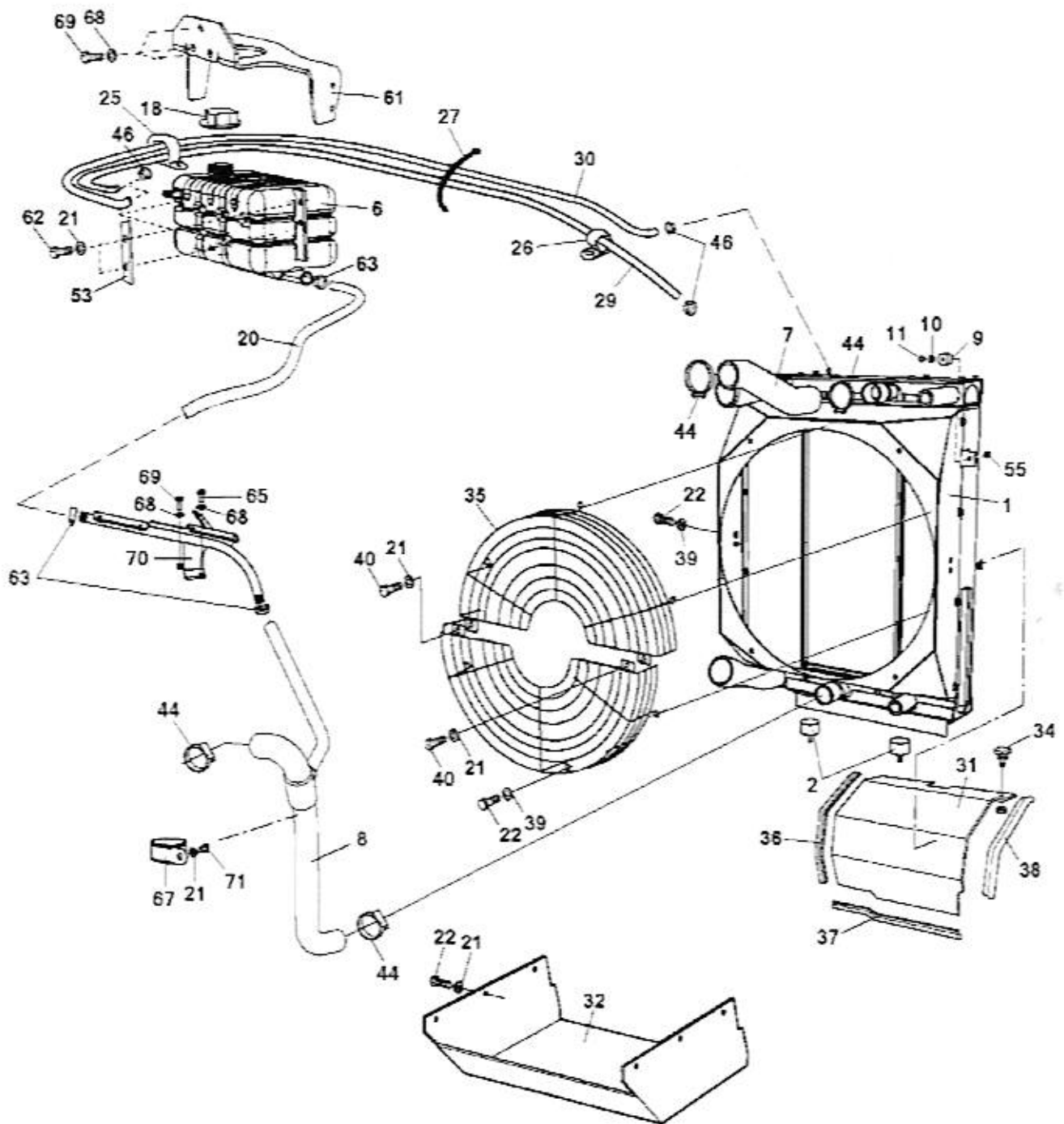
Engine

Ref. No.	Part No.	Rem.	Qty	Description	Code
10				Engine (Page 32)	Cummins QSB 4.5 C
20				Cooling system (Page 34)	
30				Combustion air system (Page 36)	
40				Fuel system (Page 38)	
50				Exhaust system (Page 40)	



Ref. No.	Part No.	Rem.	Qty	Description	Code
1	391663		1	Diesel engine	Cummins QSB 4,5
2	945731		1	.V-belt	B
3	945624		1	.Fuel filter element	A
4	945145		1	.Oil filter element	A
5	945140		1	.Alternator	C
6	945730		1	.Starter	C
7	392283		1	Engine bracket,	Right
8	392284		1	Engine bracket,	Left
9	393022		1	Engine bracket,	Left
10	393021		1	Engine bracket,	Right
11	904638		12	Washer	12x22x2
12	508079		8	Screw	M12-1,75x35H 8,8
13	500194		4	Screw	M12x40H 8.8
14	370229		1	Coupling, cpl	
15	509025		8	Screw	3/8-16UNCx32 8,8
16	372772		1	Bracket	
17	904637		12	Washer	10x18x2
18	508029		12	Screw	M10-1,5x30H 8,8
19	379163		1	V-belt cover	
20	393096		1	Connector	
21	382393		1	Fan hub	
22	379164		1	Fan	
23	792081		3	Socket head cap screw	M12x50 10,9
24	904229		3	Washer	8,4x16x1,5
25	500047		6	Screw	M8-1,25x35 8,8
26	792275		4	Socket head cap screw	7/16-20UNFX32 12,9
27	387129		4	Shock absorber	
28	904232		5	Washer	17x30x3
29	500070		4	Screw	M16x50
30	904703		16	Washer	13x24x4
31	500194		8	Screw	M12x40H 8.8
32	586019		8	Lock nut	M12
33	330333		1	Copper washer	
34	379480		1	Reducer	
35	330331		2	Washer	18,2x23,9x1,5
36	379621		1	Hydraulic hose	
37	904292		1	Hollow screw	
38	230515		1	Connector	
39	904233		2	Washer	21x36x3
40	330383		1	Cap hydraulic	
41	791468		1	Hydraulic hose	
42	313035		1	Hose clamp	
43	388855		1	Bracket	
44	500154		1	Screw	M16-2,0x25 8,8

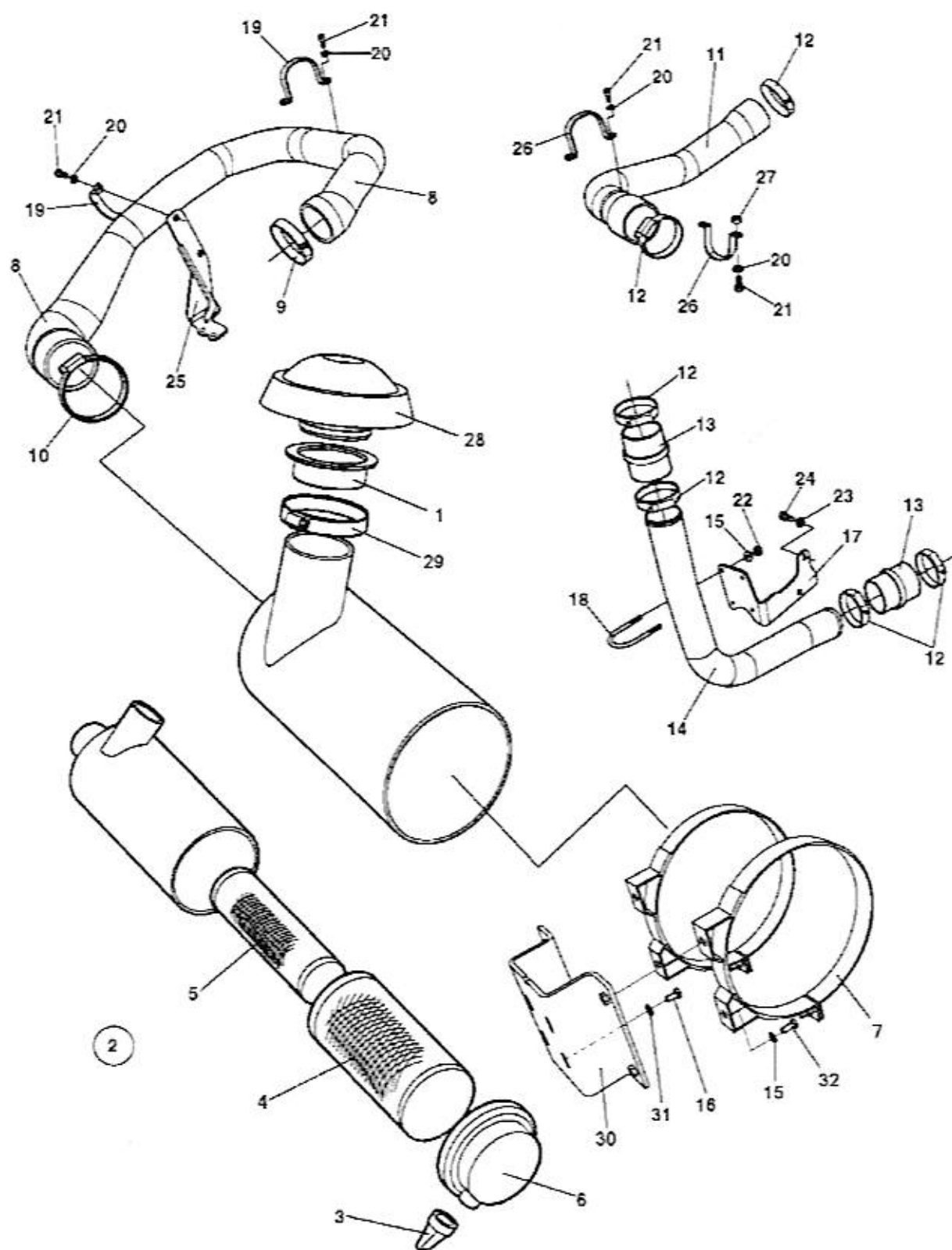
- A)
- B)
- C)
- D)



Cooling system

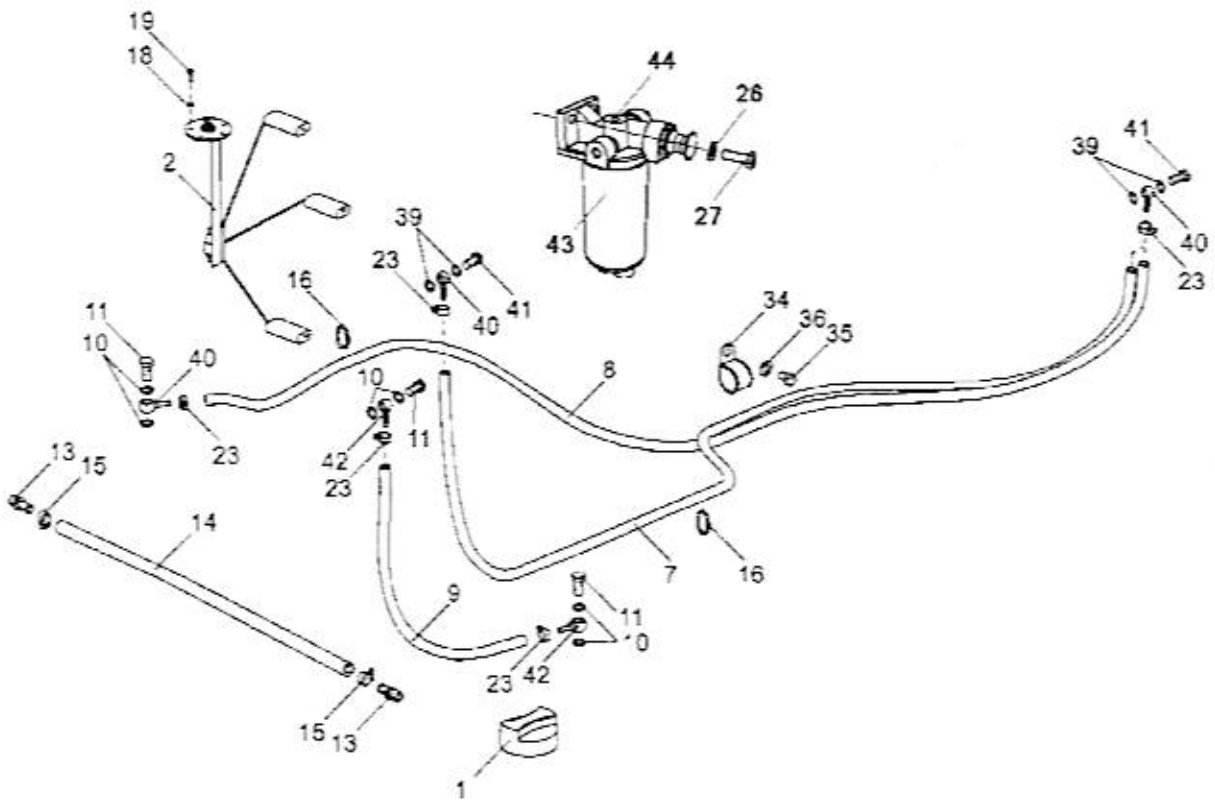
Ref. No.	Part No.	Rem.	Qty	Description	Code
1	392220		1	Radiator	
2	904551		2	Shock absorber	
6	392313		1	Expansion tank	
7	392297		1	Coolant hose	
8	393081		1	Coolant hose	
9	371774		2	Shock absorber	
10	904639		2	Washer	6,7x14x1,5
11	500012		2	Screw	M6x12
18	903714		1	Cap	
20	205027	A	1	Coolant hose	
21	904229		15	Washer	8,4x16x1,5
22	500053		14	Screw	M8-1,25x20 8.8
24	791597	G	1XL	Rubber strip	
25	921084		1	Pipe clamp	
	904228	J	1	Washer	6,4x12x1,5
	500040	J	1	Screw	M6-1x20 8.8
26	921063		1	Clamp	
27	313102		N	Cable ties	
28	902166	H	1XL	Edge trim	3-5
29	246069	B	1XL	Fuel hose	3/8"
30	246069	C	1XL	Fuel hose	3/8"
31	386853		1	Air inlet plate	
32	386943		1	Air leading plate	
34	904486		2	Quick lock	
35	387085		2	Fan guard	
36	902166	D	1XL	Edge trim	3-5
37	902166	E	1XL	Edge trim	3-5
38	902166	F	1XL	Edge trim	3-5
39	904640		8	Washer	8,4x22x3
40	500018		2	Screw	M8-1,25x12 8.8
44	313010		4	Hose clamp	
46	313075		4	Hose clamp	
53	381413		2	Washer	
55	902285		2	Lock nut	M6
61	392170		1	Holder	
62	500075		4	Screw	M6-1,0x25 8.8
63	313006		3	Hose clamp	
65	500048		1	Screw	M10-1,5x20 8.8
67	904352		1	Clamp	32x8,4x20
68	904230		6	Washer	10,5x22x2
69	500028		5	Screw	M10-1,5x25 8.8
70	393062		1	Holder	
71	500019		1	Screw	M8-1,25x16 8.8

- A) L=0,7 m
- B) L=1,28 m
- C) L=1,65 m
- D) L=0,33 m
- E) L=0,69 m
- F) L=0,45 m
- G) L=0,62 m
- H) L=0,47 m
- J) Not illustrated



Ref. No.	Part No.	Rem.	Qty	Description		Code
1	348309		1	Rubber bushing		
2	393088		1	Air cleaner Cpl.		
3	908399		1	Vacuator valve		D
4	908450		1	Air filter element,	Main	A
5	908451		1	Air filter element,	Safety	A
6	908452		1	Cover		
7	813791		2	Mounting band		
8	393093		1	Air inlet hose		
9	392810		1	Hose clamp		
10	389600		2	Hose clamp		
11	393045		1	Charge air hose		
12	386966		6	Hose clamp	2.3/4"-3.5/8"	
13	385691		2	Air intake hose		
14	393058		1	Charge air tube		
15	904229		8	Washer	8,4x16x1,5	
16	500019		4	Screw	M8-1,25x16 8.8	
17	393059		1	Holder		
18	313093		2	Pipe clamp		
19	392742		2	Clamp		
20	904228		8	Washer	6,4x12x1,5	
21	500040		8	Screw	M6-1x20 8,8	
22	586003		4	Lock nut	M8	
23	904231		4	Washer	13x24x2	
24	500046		2	Screw	M12x30H 8,8 FZB	
25	392741		1	Holder		
26	393097		2	Clamp		
27	902285		2	Lock nut	M6	
28	499266		1	Protection cover		
29	904060		1	Hose clamp		
30	393085		1	Filter bracket		
31	904556		1	Washer	8,4x16x3,0	
32	500053		4	Screw	M8-1,25x20 8.8	

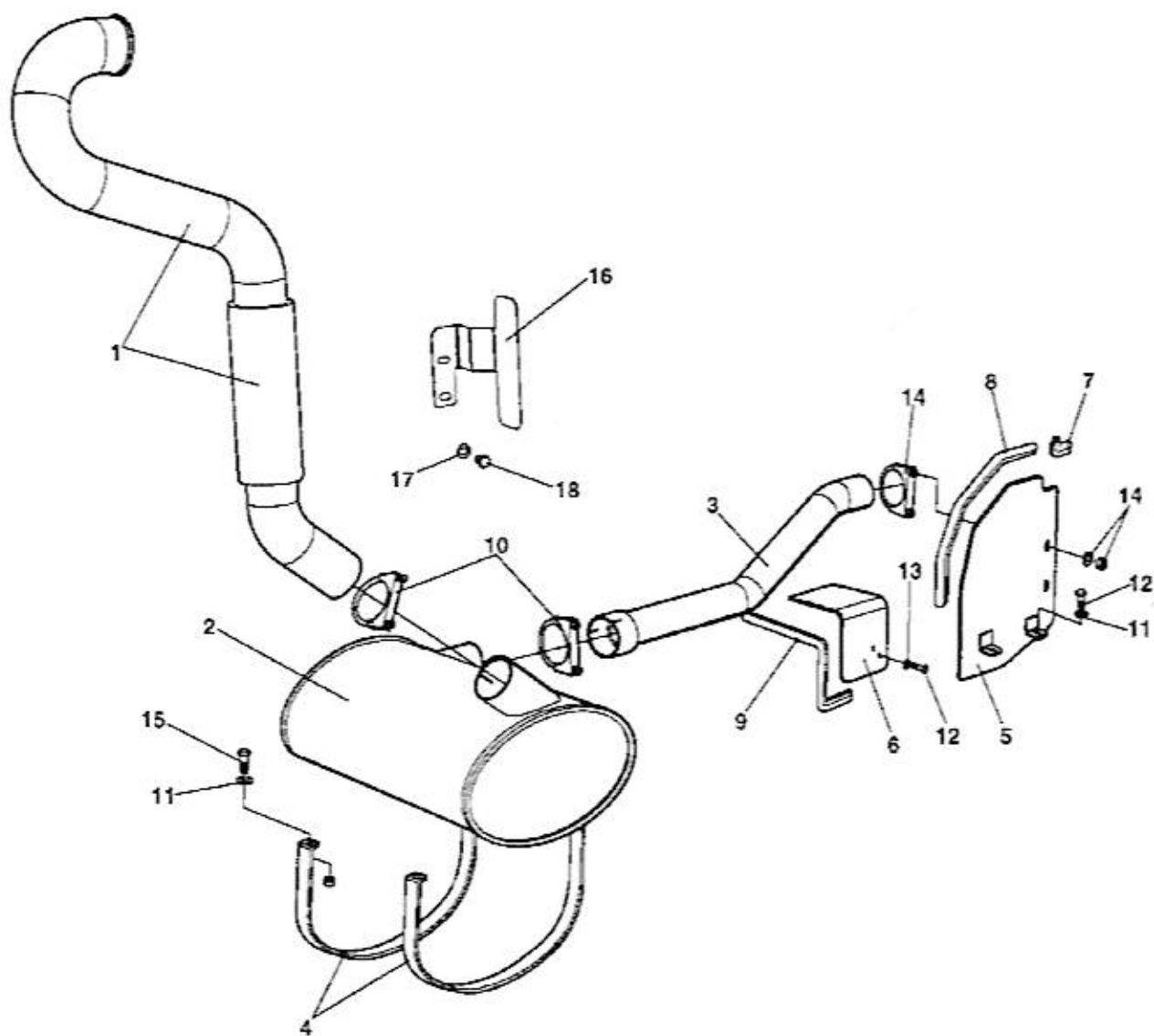
A)
D)



Fuel system

Ref. No.	Part No.	Rem.	Qty	Description		Code
1	373460		1	Fuel cap		D
2	904695		1	Fuel level sender		D
7	904984	A	1XL	Fuel hose		D
8	904984	B	1XL	Fuel hose		D
9	904984	C	1XL	Fuel hose		D
10	747282		4	Copper washer	14x20x1,5	
11	330171		2	Hollow screw		
13	373574		2	Hose connection		
14	244054	D	1XL	Hose reinforced		
15	313002		2	Hose clamp	13-20 mm	
16	313041	N		Cable ties	L=186 mm	
18	904281	5		Washer	5,3x10x1	
19	500006	5		Screw	M5x16	
23	313001	6		Hose clamp	11-17 mm	
26	904230	2		Washer	10,5x22x2	
27	500029	2		Screw	M10-1,5x30 8.8	
34	921084	1		Pipe clamp		
35	500040	1		Screw	M6-1x20 8.8	
36	904228	1		Washer	6,4x12x1,5	
39	230277	8		Copper washer	12,2x17,9x1,5	
40	792251	4		Banjo coupling	M12 Hose 8	
41	234919	4		Screw	M12-1,5-24-3	
42	901121	2		Banjo fitting	14x6 Hose 8	
43	945147	1		Pre-fuel filter element		A
44	945538	1		Fuel filter head with hand pump		

- A) L=2,05 m
- B) L=1,7 m
- C) L=0,50 m
- D) L=0,65 m
- A)
- D)



Exhaust system

Ref. No.	Part No.	Rem.	Qty	Description	Code
1	392294		1	Exhaust pipe	
2	392295		1	Muffler	
3	392296		1	Exhaust pipe	
4	386789		2	Clamp	
5	377098		1	Thermal guard	
6	392747		1	Thermal guard	
7	902166	A	1XL	Edge trim	3-5
8	902166	B	1XL	Edge trim	3-5
9	902166	C	1XL	Edge trim	3-5
10	313094		2	Pipe clamp	
11	904640		6	Washer	8,4x22x3
12	500053		4	Screw	M8-1,25x20 8.8
13	904229		4	Washer	8,4x16x1,5
14	313093		1	Pipe clamp	
15	500022		4	Screw	M8-1,25x30 8,8
16	393936		1	Thermal guard	
17	904231		2	Washer	13x24x2
18	500163		2	Screw	M12x16

A) L=0,080M

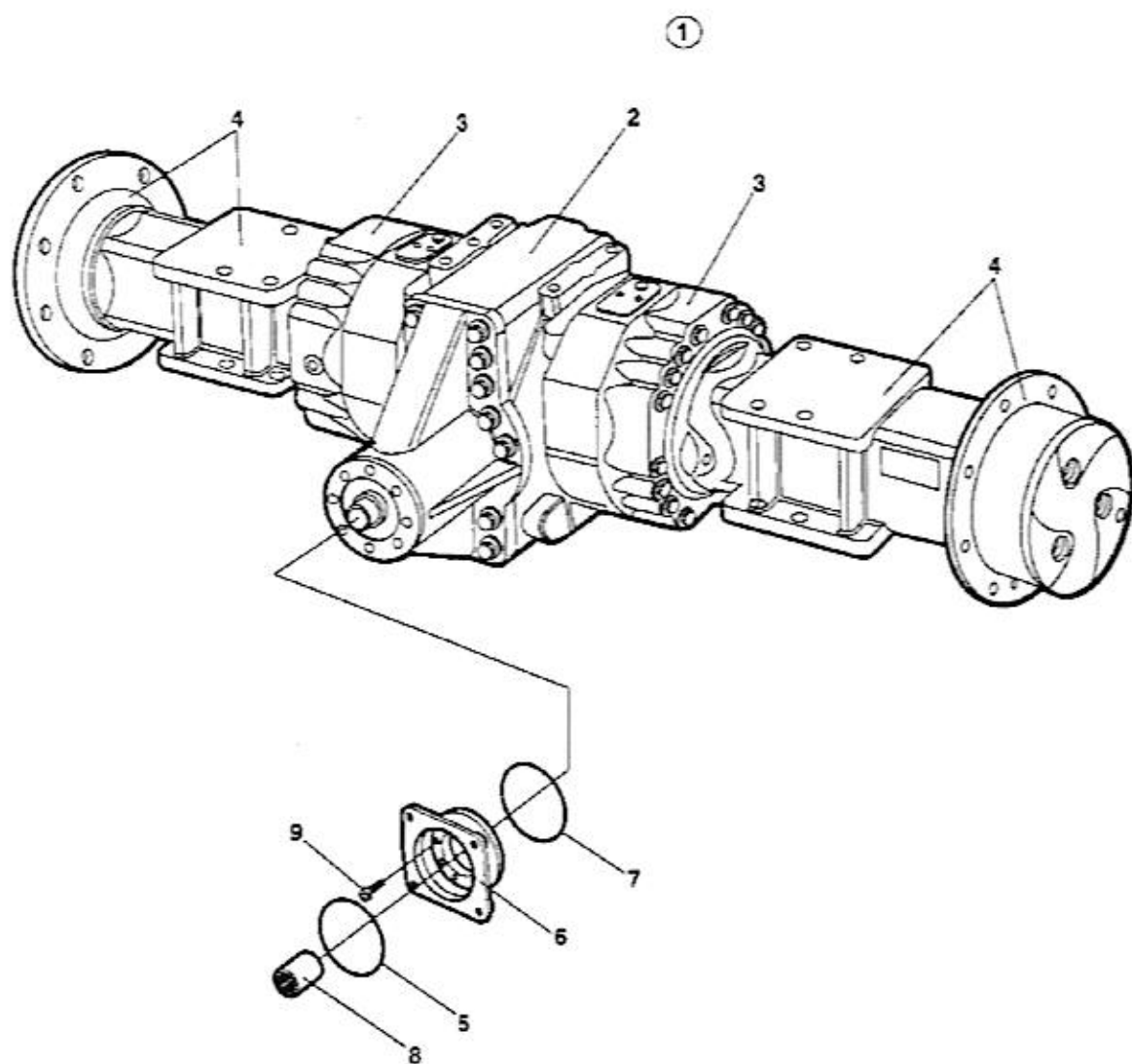
B) L=0,410M

C) L=0,380M

Ref. No.	Part No.	Rem. Qty	Description	Code
17			Rear axle and wheels (Page 44)	
20	383857		Rear axle (Page 46)	
70	383856		Rear axle (Page 54)	No-Spin, Option

Ref. No.	Part No.	Rem.	Qty	Description	Code
1	383857		1	Rear axle (Page 46)	
2	929217		8	Screw	
3	904233		16	Washer	21x36x3
4	901145		8	Lock nut	M20-10
5	390590		2	Wheel, cpl	
	390762	A	2	Wheel, cpl	
	388145	A,G	1	Wheel, cpl	
	388146	G	1	Wheel, cpl	
6	383933		1	.Rim	
7	792261		1	.Air charging valve	Straight
8	390591		1	.Tyre	B
	791573	J,G	1	.Tyre	D
9	390588	B	1	Tractor wheel, cpl	D
	390587	C	1	Tractor wheel, cpl	
	390759	D	1	Tractor wheel, cpl	
	390760	E	1	Tractor wheel, cpl	
10	383933		1	.Rim	
11	792261		1	.Air charging valve	Straight
12	390589		1	.Tyre	B
13	383974	F	2	Wheel, tubeless, cpl	D
	383975	K	2	Wheel, tubeless, cpl	
14	383955		1	.Rim cpl	
15	901443		1	..Snap ring	
16	901444		1	..Side ring	
17	791175		1	.Air charging valve	
	791176		1	.Valve foot	
18	901218		1	.Tyre	D
19	355983	H	2	Decal "TYRE PRESSURE"	200kPa/29psi
	903985	I	2	Decal "SAFETY", "TYRE IN BALLAST"	

- A) Liquidfilled, option.
- B) Left, option.
- C) Right, option.
- D) Liquidfilled tyre, right, option.
- E) Liquidfilled tyre, left, option.
- F) Option, Michelin branded.
- G) For Chinese market only.
- H) Used with item 13, 383974, 383975.
- I) Used with Liquid filled tyres.
- J) Used together with 388145 and 388146.
- K) Liquidfilled, option, Michelin branded.
- B)
- D)



383857 Rear axle

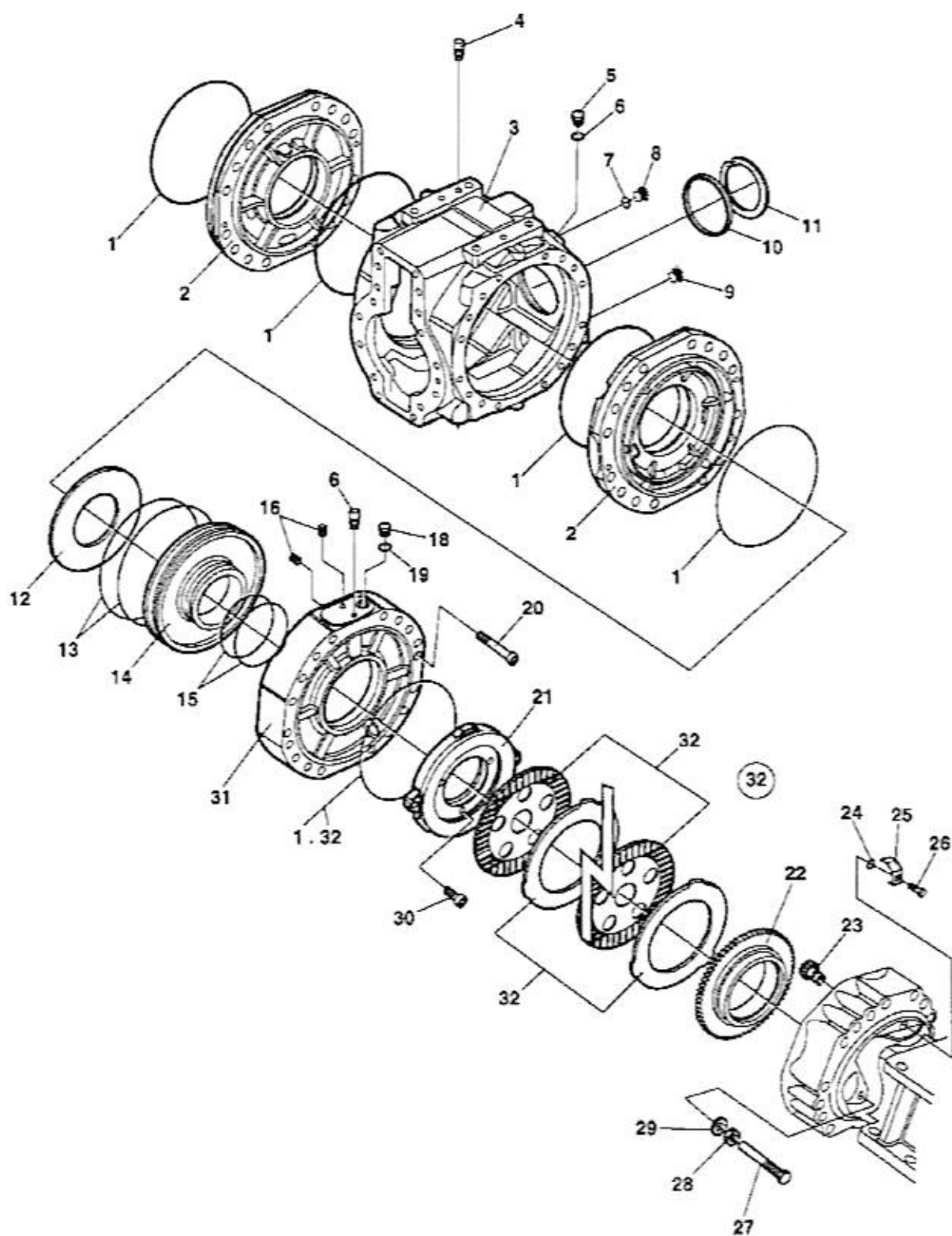
Ref. No.	Part No.	Rem.	Qty	Description	Code
1			1	Rear axle	
2			1	.Differential with limited slip (Page 48)	
3			2	.Differential housing and brakes (Page 50)	
4			2	.Planet gear (Page 52)	
5	909584		1	O-ring	D
6	909583		1	Flange	
7	929648		1	O-ring	D
8	901834		1	Splined sleeve	
9	909582		8	Screw	

D)

Differential with limited slip

Ref. No.	Part No.	Rem.	Qty	Description	Code
1	929638		1	Nut	
2	909574		1	Roller bearing	
3	939257		16	Bolt	
4	909572		16	Spring washer	
5	908485		1	Housing	
6	909568		1	Shim	0,10mm
	909569		1	Shim	0,20mm
	909570		1	Shim	0,50mm
	939258		1	Shim	0,15mm
7	909567		1	Spacer	
8	939259		1	Shim	0,15mm
	909580		1	Shim	0,20mm
	909576		1	Shim	0,30mm
	929644		1	Shim	0,40mm
	939260		1	Shim	0,50mm
9	909581		1	Roller bearing	
10	212553		1	Bevel gear set	
11	929628		16	Washer	
12	929629		16	Screw	
13	923342		1	Bearing	
14	939261		2	Nut	
15	938989		2	Screw	
16	909550		1	Differential carrier	
17	909551		1	Shim	0,30mm
	909552		1	Shim	0,40mm
	909553		1	Shim	0,10mm
21	909558		2	Differential gear	
22	909566		1	Shaft	
23	909559		4	Friction washer	
24	939262		4	Differential pinion	
25	909561		3	Roller pin	
26	909560		2	Shaft	
27	909565		1	Shaft retainer	
28	909562		1	Differential carrier cover	
29	909563		8	Screw	
30	935644		2	Disc kit	D
31			10	.Limited slip disc	D
32			8	.Limited slip disc	D
33			2	.Limited slip disc	D

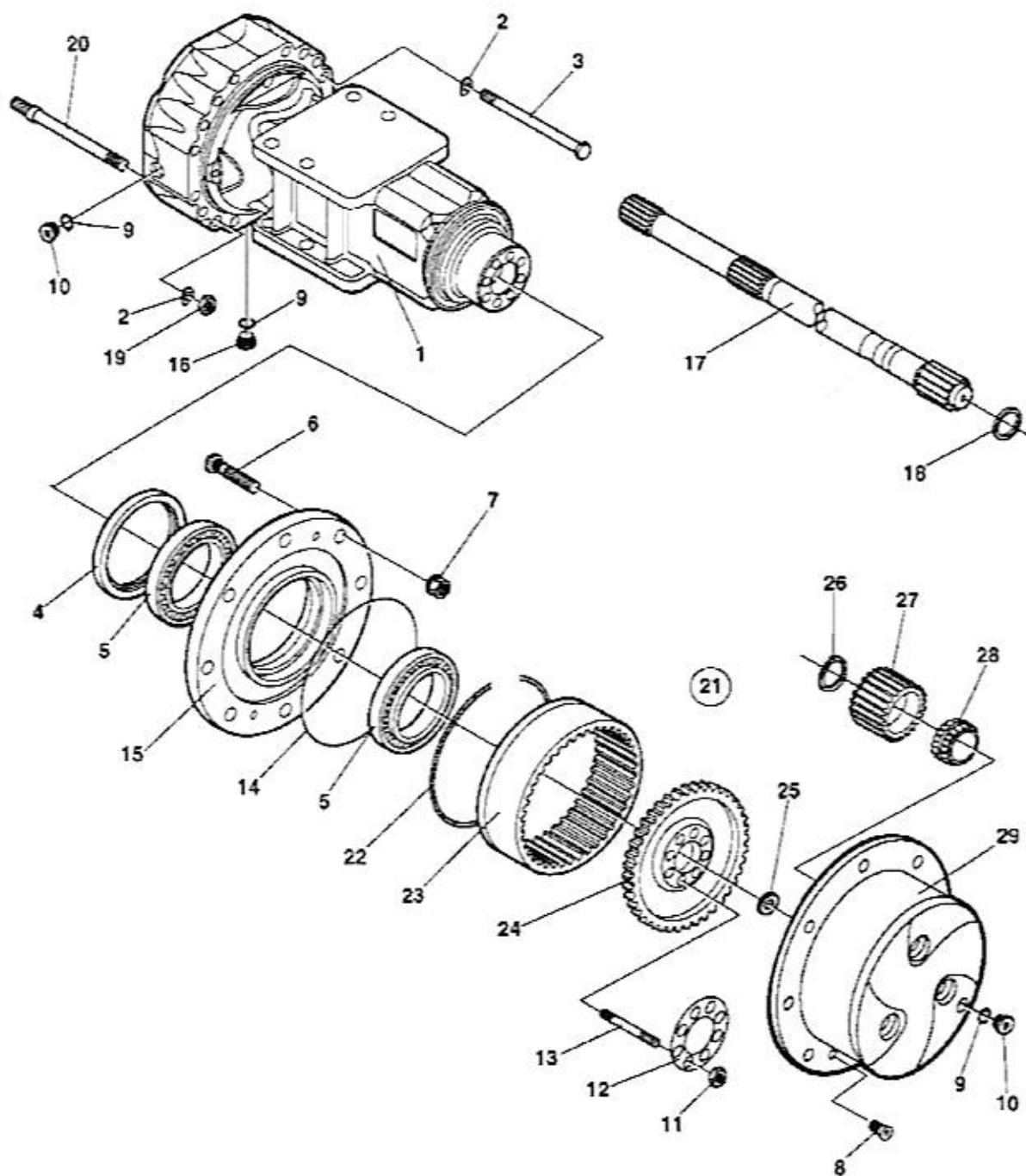
D)



Differential housing and brakes

Ref. No.	Part No.	Rem.	Qty	Description	Code
1	909609		6	O-ring	D
2	939255		2	Cover	
3	939256		1	Housing	
4	938984		1	Vent nipple	
5	909544		2	Screw	
6	938983		2	Seal washer	
7	909607		1	Seal	D
8	909596		1	Plug	
9	926810		1	Magnetic plug	
10	938296		1	Plug	
11	929617		1	Lock ring	
12	909616		2	Spring	
13	909618		4	O-ring	D
14	939280		2	Piston	
15	909619		4	O-ring	D
16	939281		4	Bolt	
17	938984		2	Vent nipple	
18	939282		2	Bolt	
19	939036		2	Seal washer	
20	939035		4	Screw	
21	939283		2	Disc	
22	939285		2	Ring	
23	909622		2	Pinion	
24	900966		2	O-ring	D
25	939286		2	Locking plate	
26	909624		2	Screw	
27	909626		4	Bolt	
28	900957		4	Nut	
29	926847		4	Seal washer	
30	939026		6	Screw	
31	939287		2	Cover	
32	939284		2	Brake disc kit	
			12	.Brake disc	
			12	.Brake disc	
	909609		2	.O-ring	D

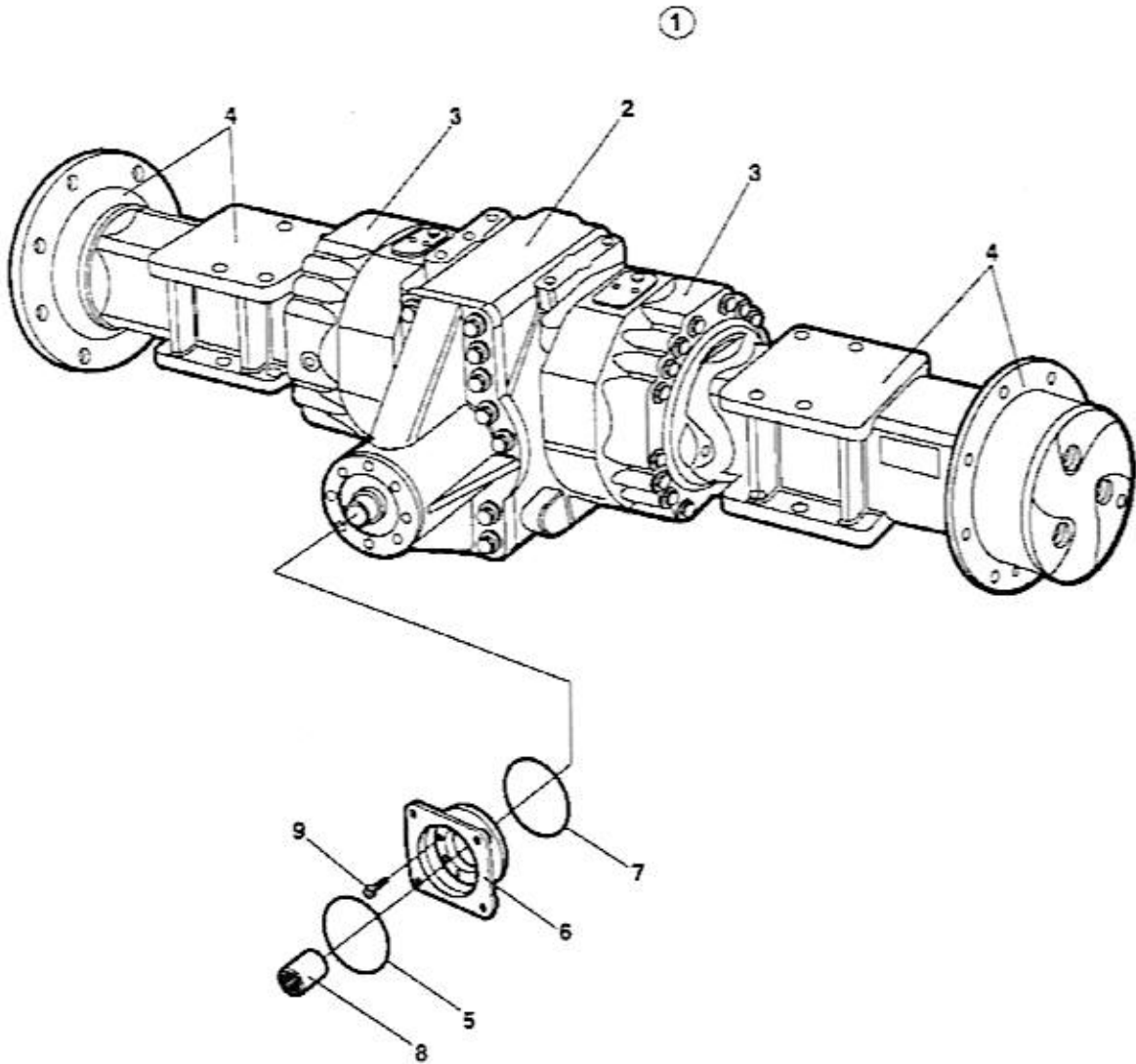
D)



Planet gear

Ref. No.	Part No.	Rem.	Qty	Description	Code
1	939263		2	Axle case	
2	939003		32	Spring washer	
3	939264		24	Bolt	
4	939265		2	Seal	
5	939266		4	Bearing	
6	926781		20	Wheel screw	
7	901987		20	Wheel nut	
8	939015		4	Screw	
9	330333		6	Copper washer	D
10	909596		4	Plug	
11	939016		20	Nut	
12	939275		2	Locking plate	
13	939017		20	Stud	
14	929612		2	O-ring	
15	939276		2	Wheel hub	
16	938985		2	Magnetic plug	
17	939277		2	Half shaft	
18	909586		2	Seal	D
19	939019		8	Nut	
20	939278		8	Stud	
21	939279		2	Planet gear carrier Cpl.	
22	939267		2	.Circlip	
23	939268		2	.Ring gear	
24	939269		2	.Ring gear support	
25	939270		2	.Washer	
26	939271		6	.Seal	
27	939272		6	.Planet gear	
28	939273		6	.Bearing	
29	939274		2	.Planet gear carrier	

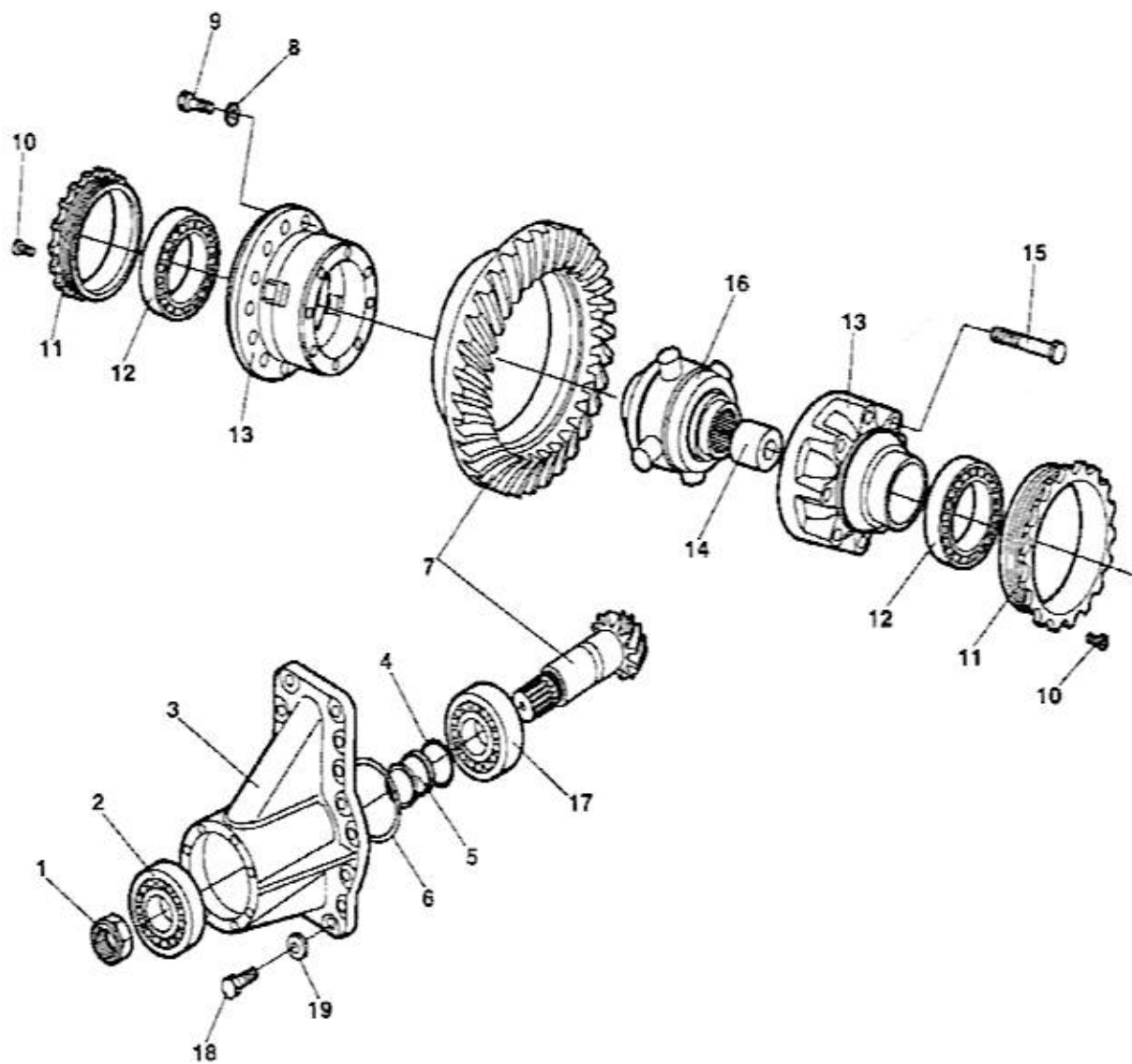
D)



383856 Rear axle No-Spin, Option

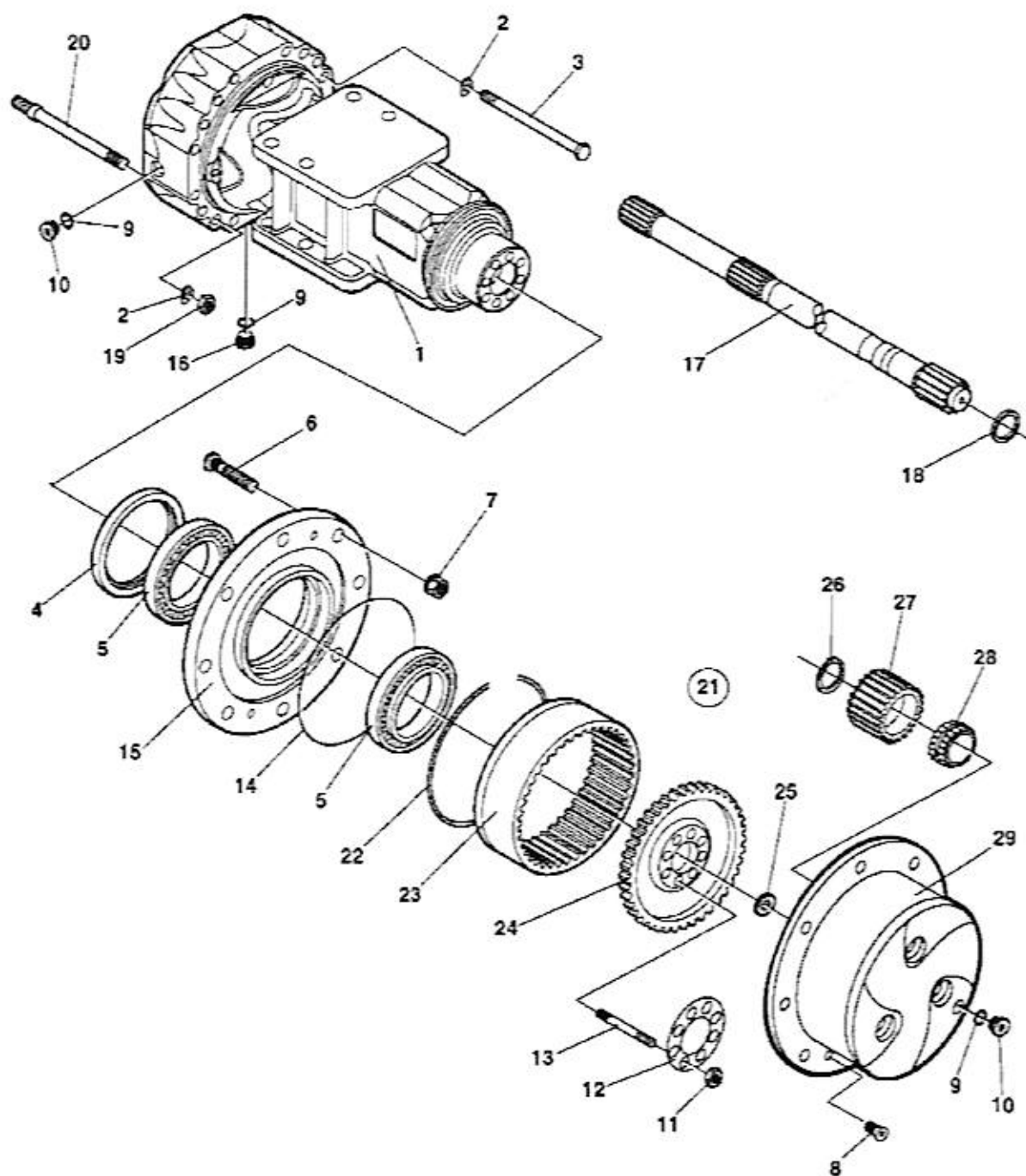
Ref. No.	Part No.	Rem.	Qty	Description	Code
1			1	Rear axle	
2			1	.Differential (Page 56)	with No-Spin
3			2	.Differential housing and brakes (Page 50)	
4			2	.Planet gear (Page 58)	
5	909584		1	O-ring	D
6	909583		1	Flange	
7	929648		1	O-ring	D
8	901834		1	Splined sleeve	
9	909582		8	Screw	

D)



Differential with No-Spin

Ref. No.	Part No.	Rem.	Qty	Description	Code
1	929638		1	Nut	
2	909574		1	Roller bearing	
3	908485		1	Housing	
4	939259		1	Shim	0,15mm
	909580		1	Shim	0,20mm
	909576		1	Shim	0,30mm
	929644		1	Shim	0,40mm
	939260		1	Shim	0,50mm
5	909567		1	Spacer	
6	909568		1	Shim	0,10mm
	909569		1	Shim	0,20mm
	909570		1	Shim	0,50mm
	939258		1	Shim	0,15mm
7	212553		1	Bevel gear set	
8	929628		16	Washer	
9	929629		16	Screw	
10	938989		2	Screw	
11	939261		2	Nut	
12	923342		1	Bearing	
13	929630		1	Differential case	
14	929631		1	Spacer	
15	929625		8	Screw	
16	929626		1	Non-spin unit	
17	909581		1	Roller bearing	
18	939257		16	Bolt	
19	909572		16	Spring washer	



Planet gear

Ref. No.	Part No.	Rem. Qty	Description	Code
1	939263	2	Axle case	
2	939003	32	Spring washer	
3	939264	24	Bolt	
4	939265	2	Seal	
5	939266	4	Bearing	
6	926781	20	Wheel screw	
7	901987	20	Wheel nut	
8	939015	4	Screw	
9	330333	6	Copper washer	D
10	909596	4	Plug	
11	939016	20	Nut	
12	939275	2	Locking plate	
13	939017	20	Stud	
14	929612	2	O-ring	
15	939276	2	Wheel hub	
16	938985	2	Magnetic plug	
17	939277	2	Half shaft	
18	909586	2	Seal	D
19	939019	8	Nut	
20	939278	8	Stud	
21	939351	2	Planet gear carrier Cpl.	
22	939267	2	.Circlip	
23	939268	2	.Ring gear	
24	939269	2	.Ring gear support	
25	939270	2	.Washer	
26	939271	8	.Seal	
27	939272	8	.Planet gear	
28	939273	8	.Bearing	
29	939349	2	.Planet gear carrier	

D)

Ref. No.	Part No.	Rem.	Qty	Description	Code
10				Propulsion system, Front (Page 62)	
15				Propulsion system, Rear (Page 64)	
17	371509			Propulsion motor (Page 66)	C
20				Vibration system (Page 68)	
30				Steering system (Page 72)	
60				Brake system (Page 76)	

C)

