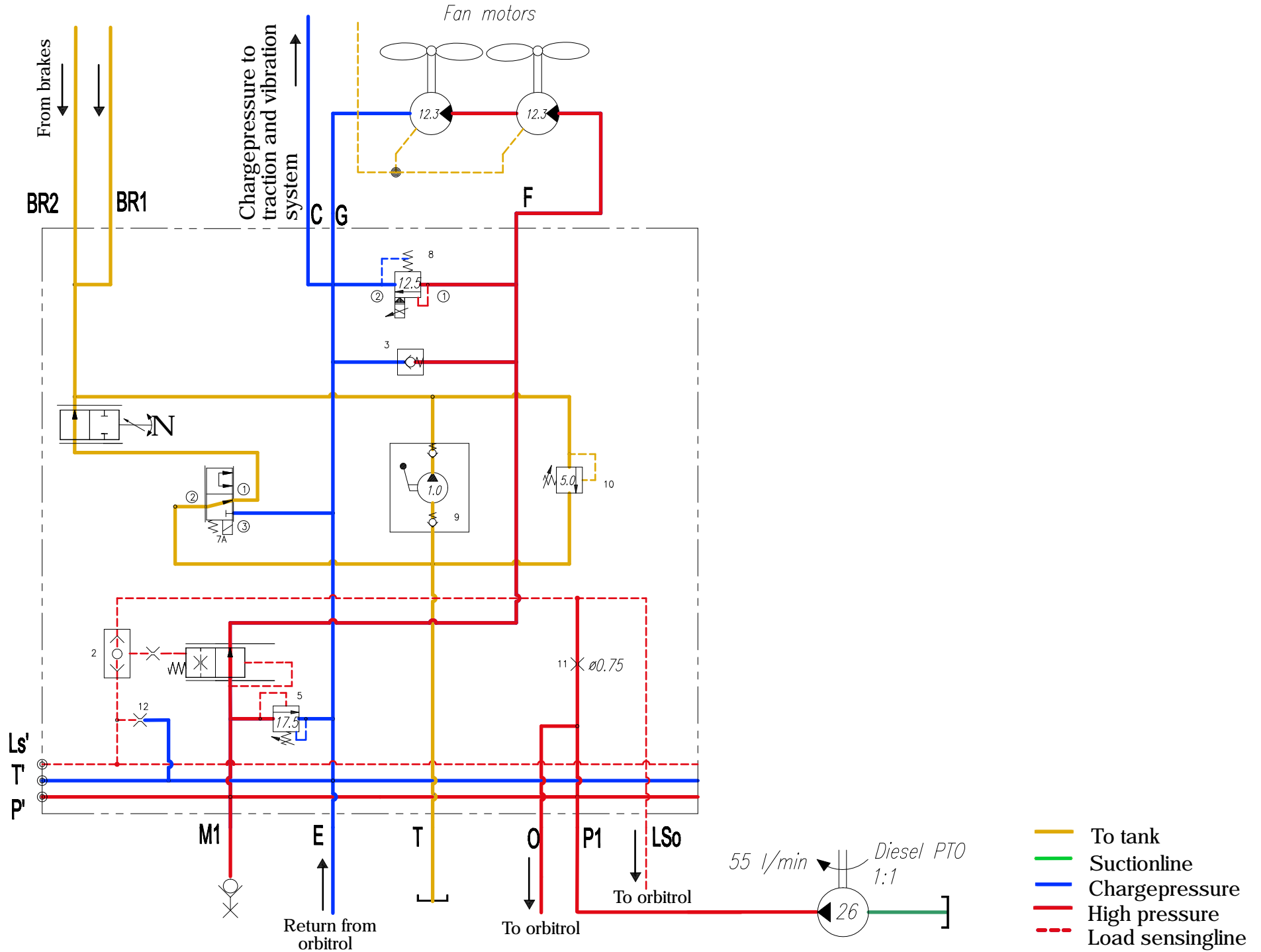


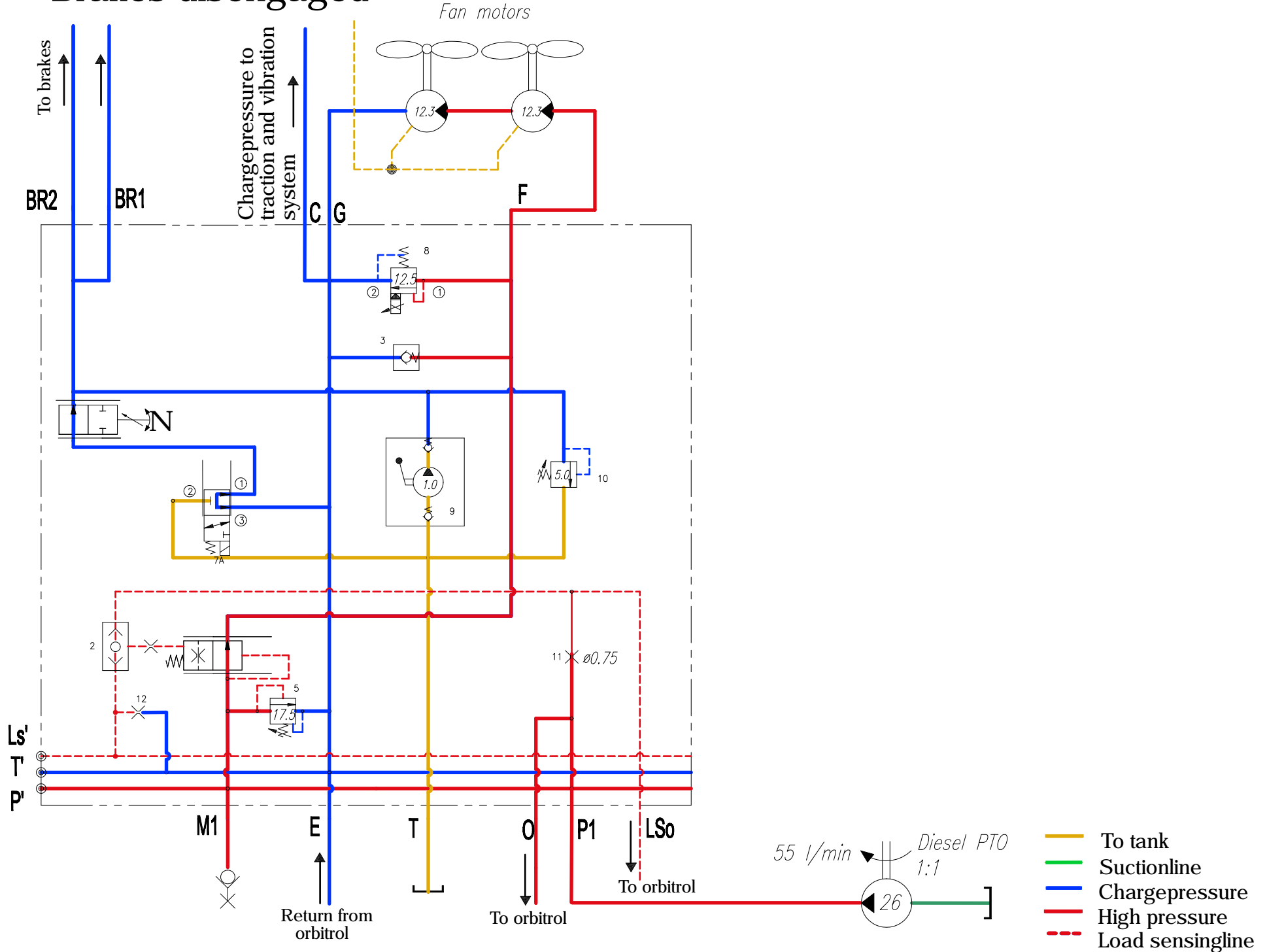
Brakes engaged

CC424-624



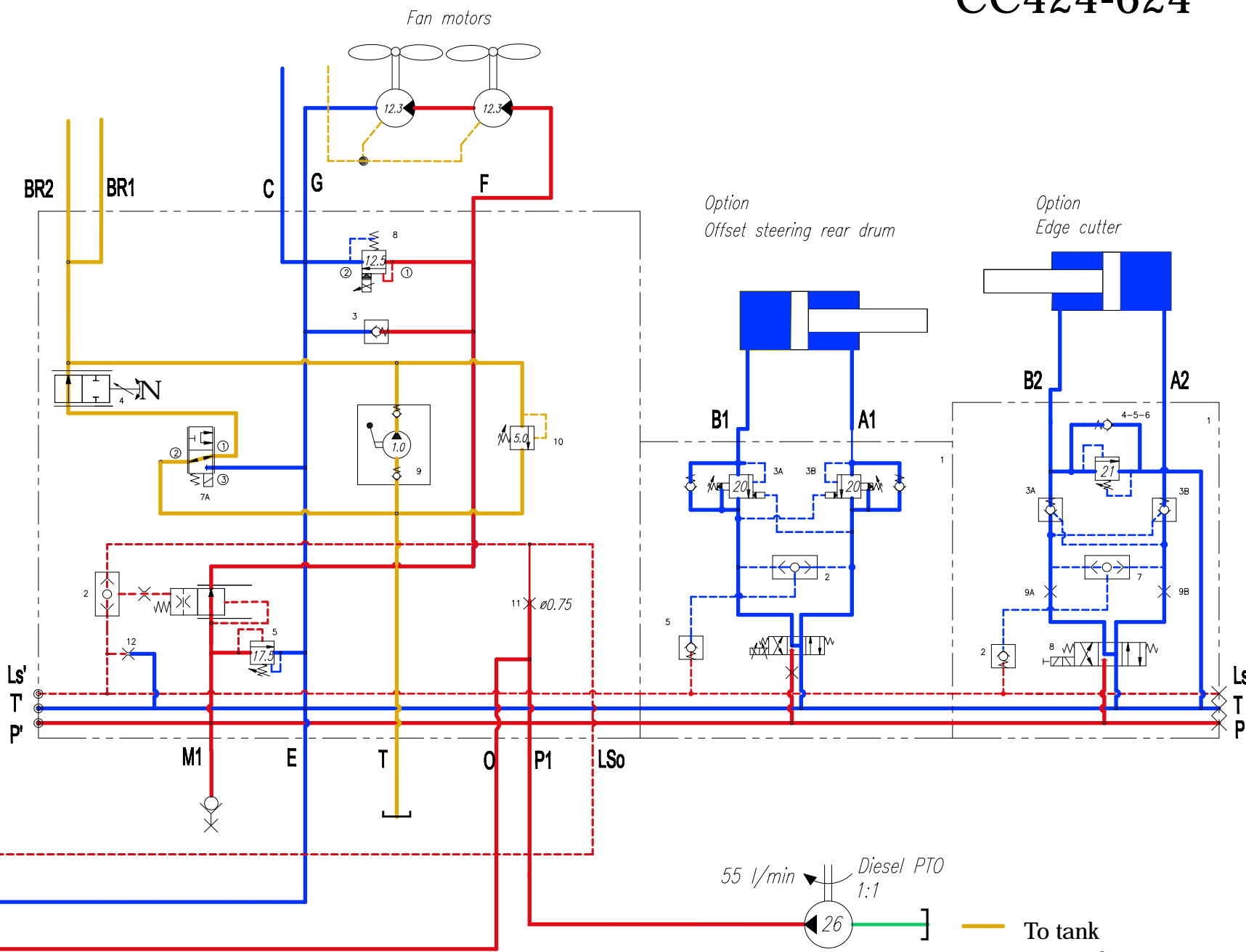
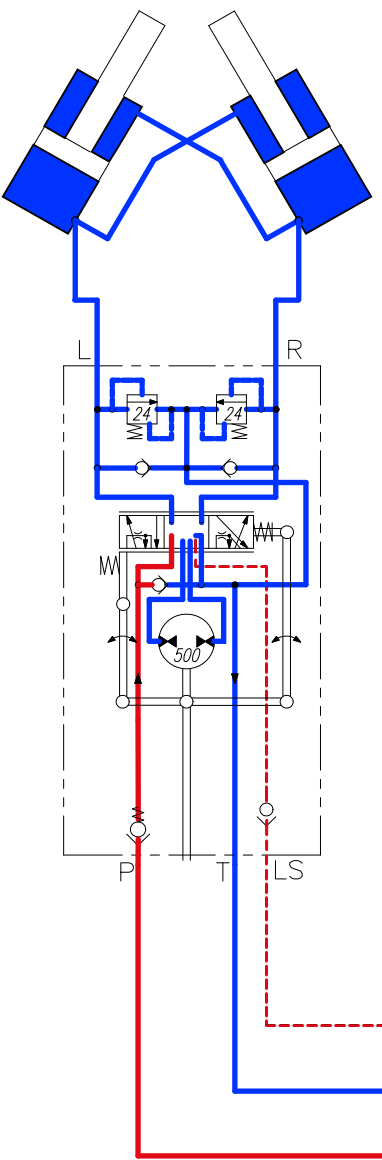
Brakes disengaged

CC424-624



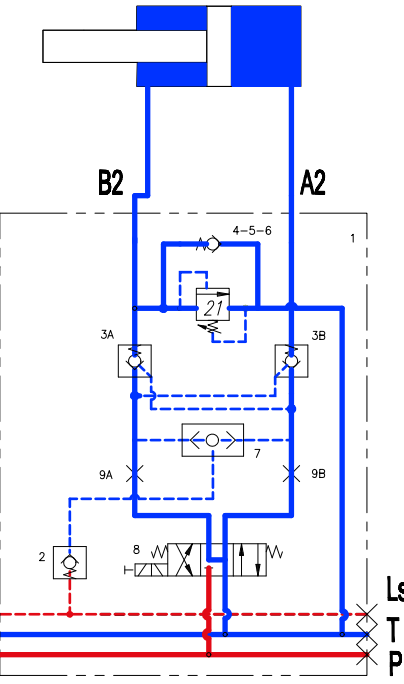
Steeringsystem in neutral (brakes engaged)

CC424-624



Option
Offset steering rear drum

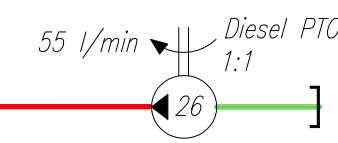
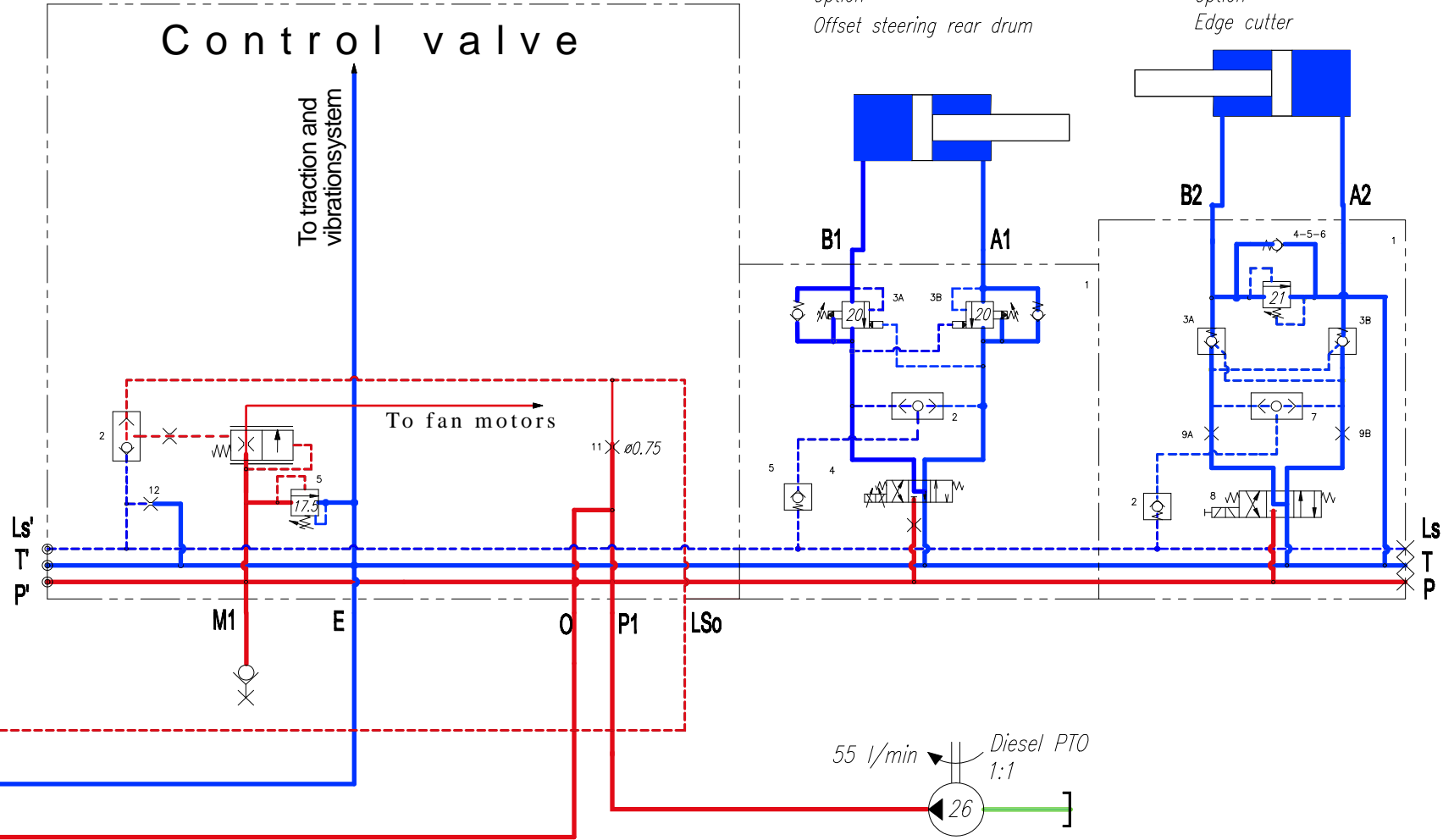
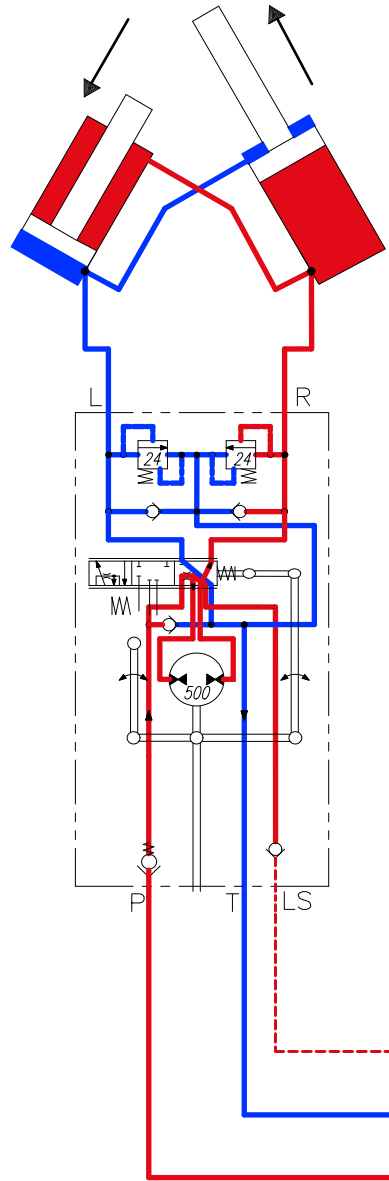
Option
Edge cutter



- To tank
- Suctionline
- Chargepressure
- High pressure
- - - Load sensingline

Steering left

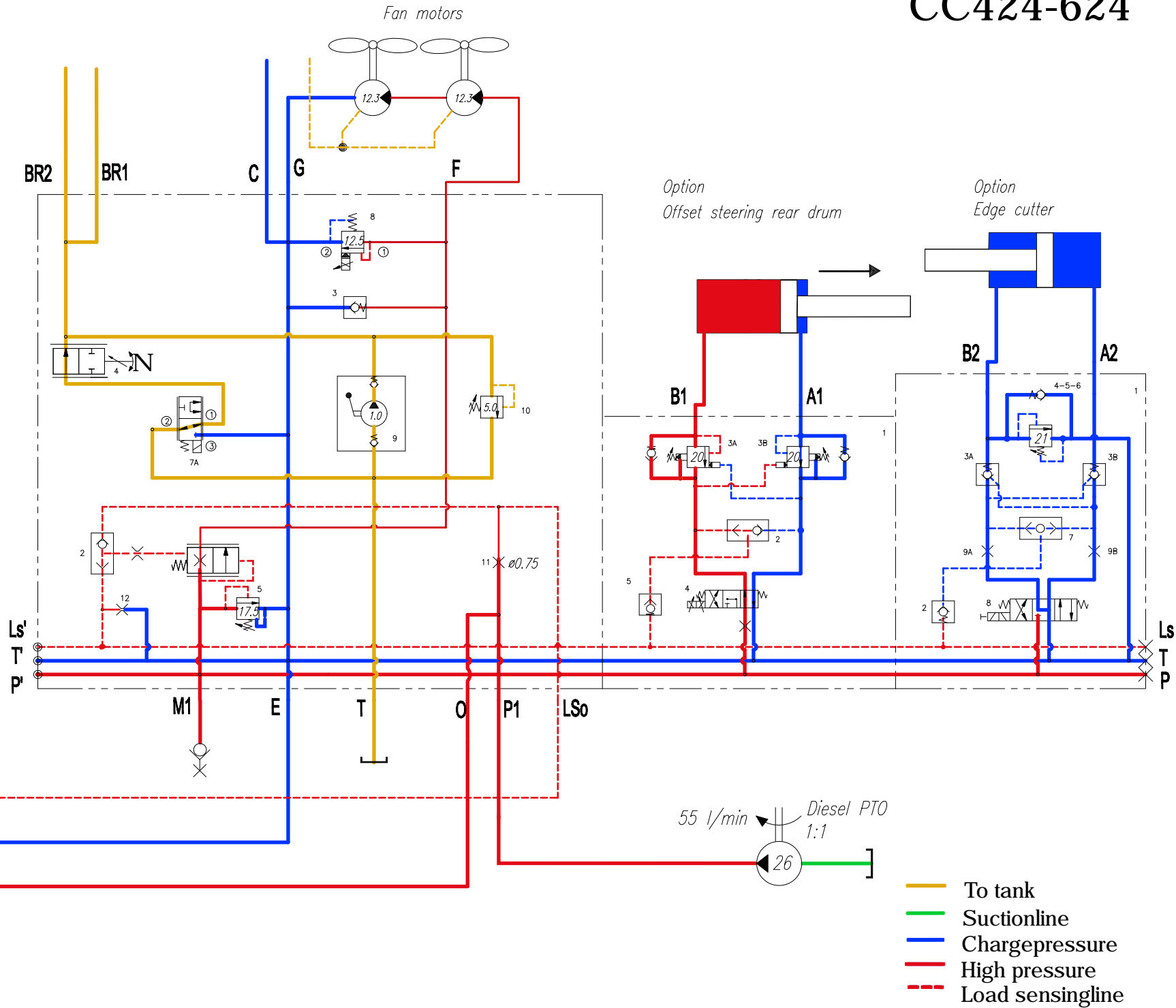
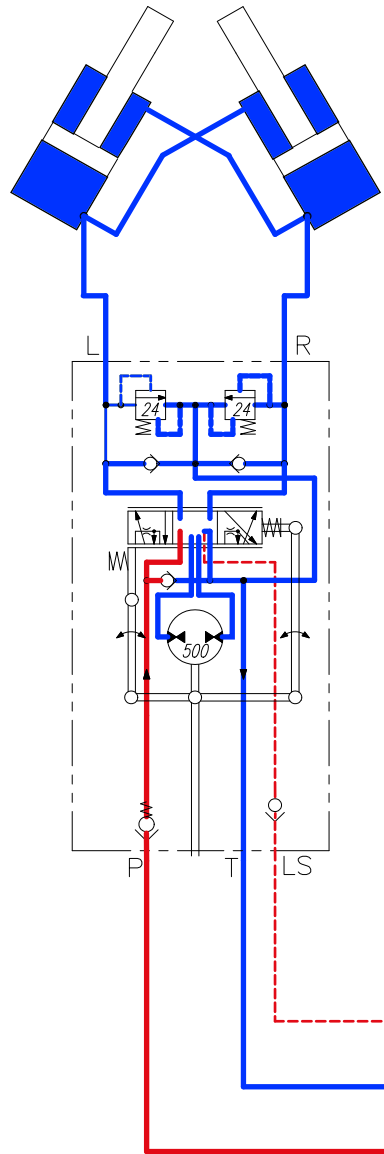
CC424-624



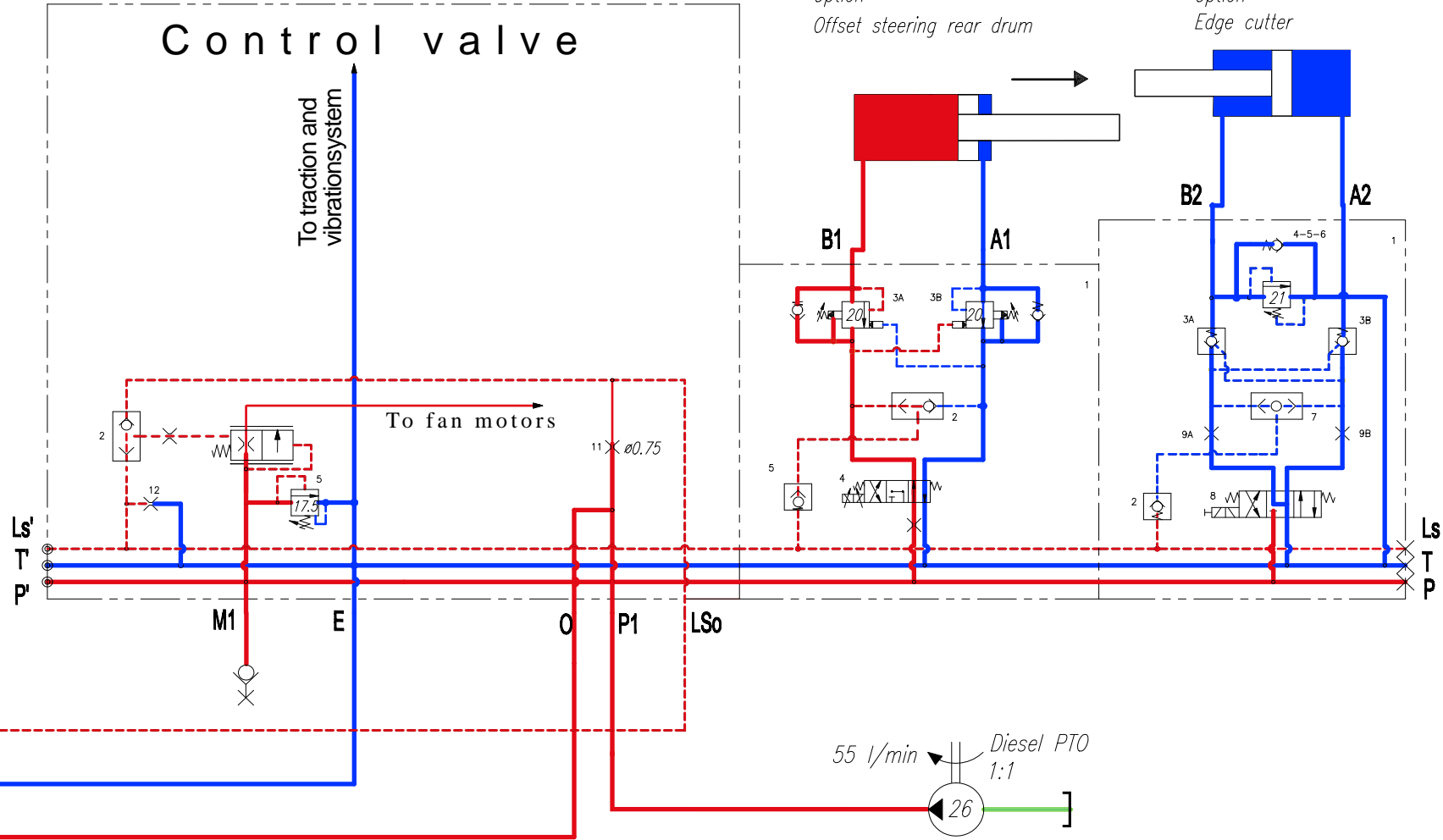
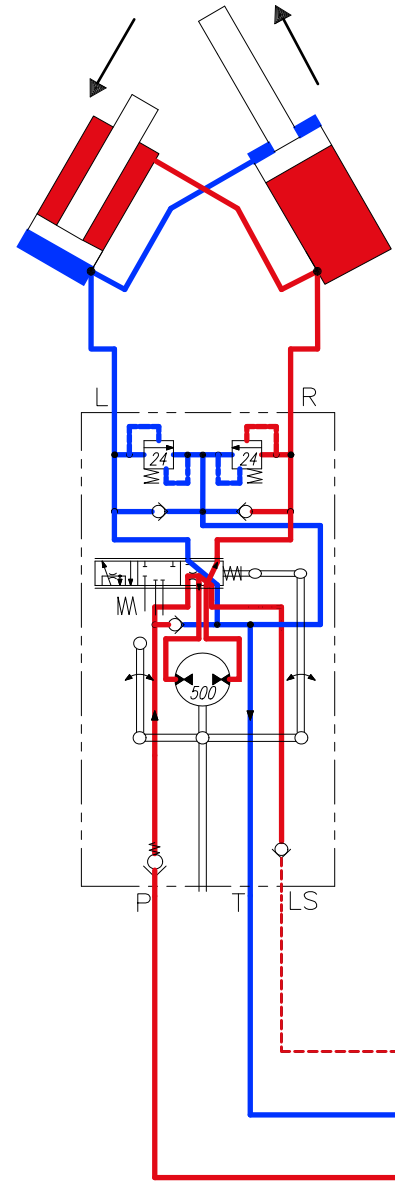
- To tank
- Suctionline
- Chargepressure
- High pressure
- Load sensingline

Steering with offset (brakes engaged)

CC424-624



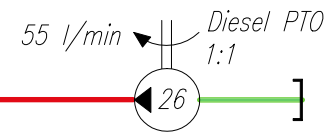
Steering left with both steeringwheel and offset



Option
Offset steering rear drum

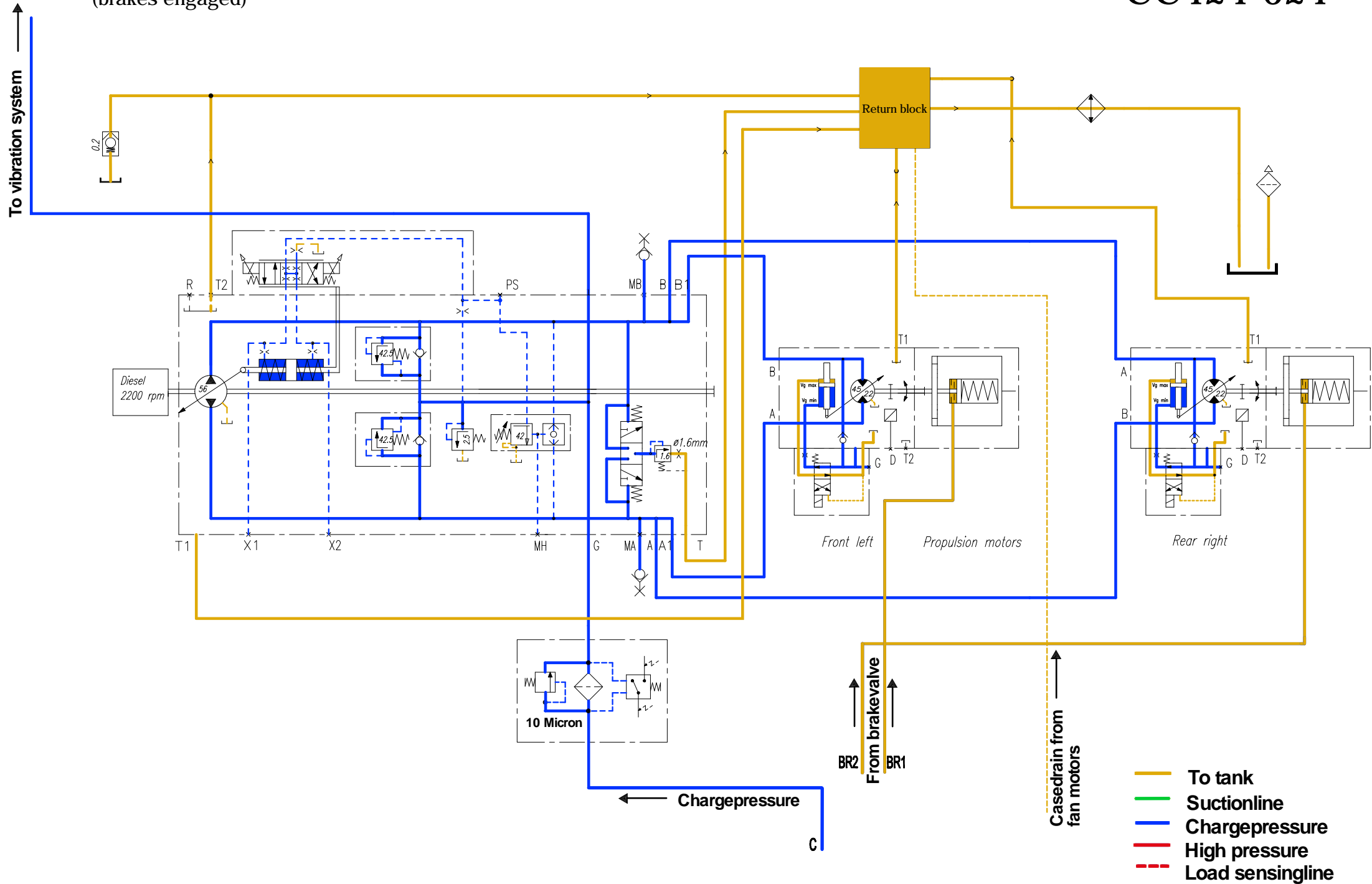
Option
Edge cutter

- To tank
- Suctionline
- Chargepressure
- High pressure
- Load sensingline



Driving system in neutral (brakes engaged)

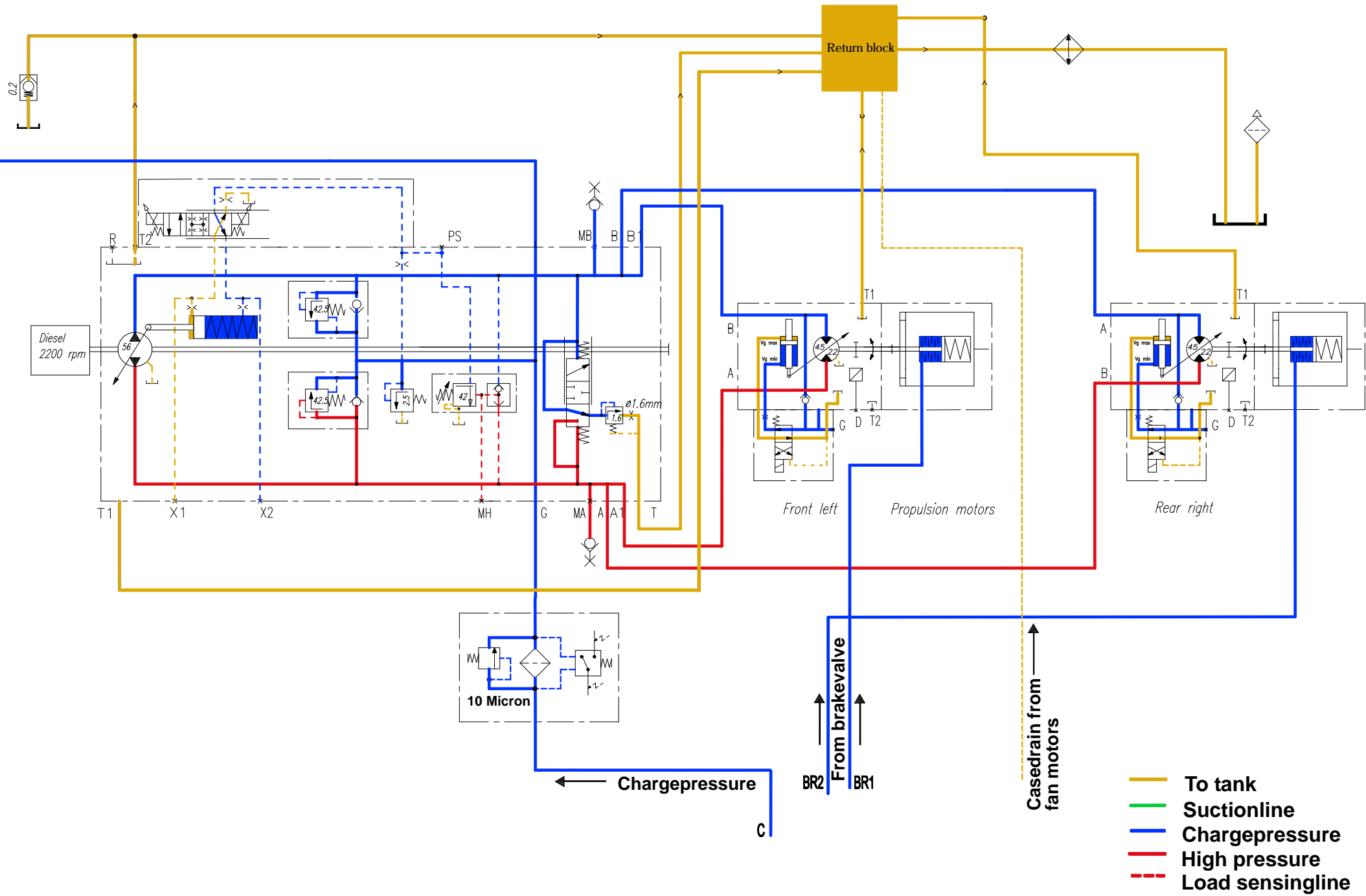
CC424-624



Driving forward without disp. shifted (brakes disengaged)

CC424-624

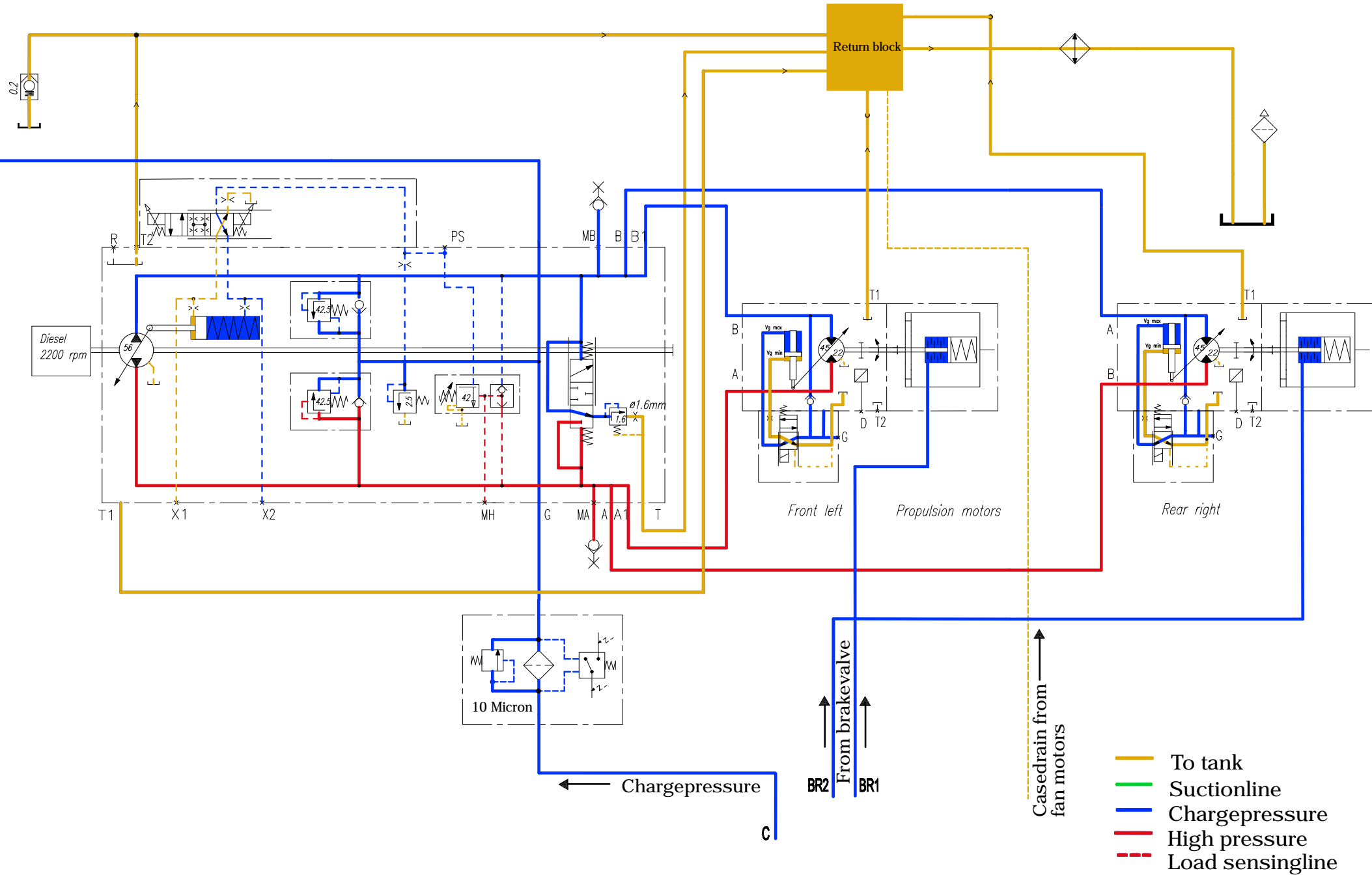
To vibration system



Driving forward with disp. shifted (brakes disengaged)

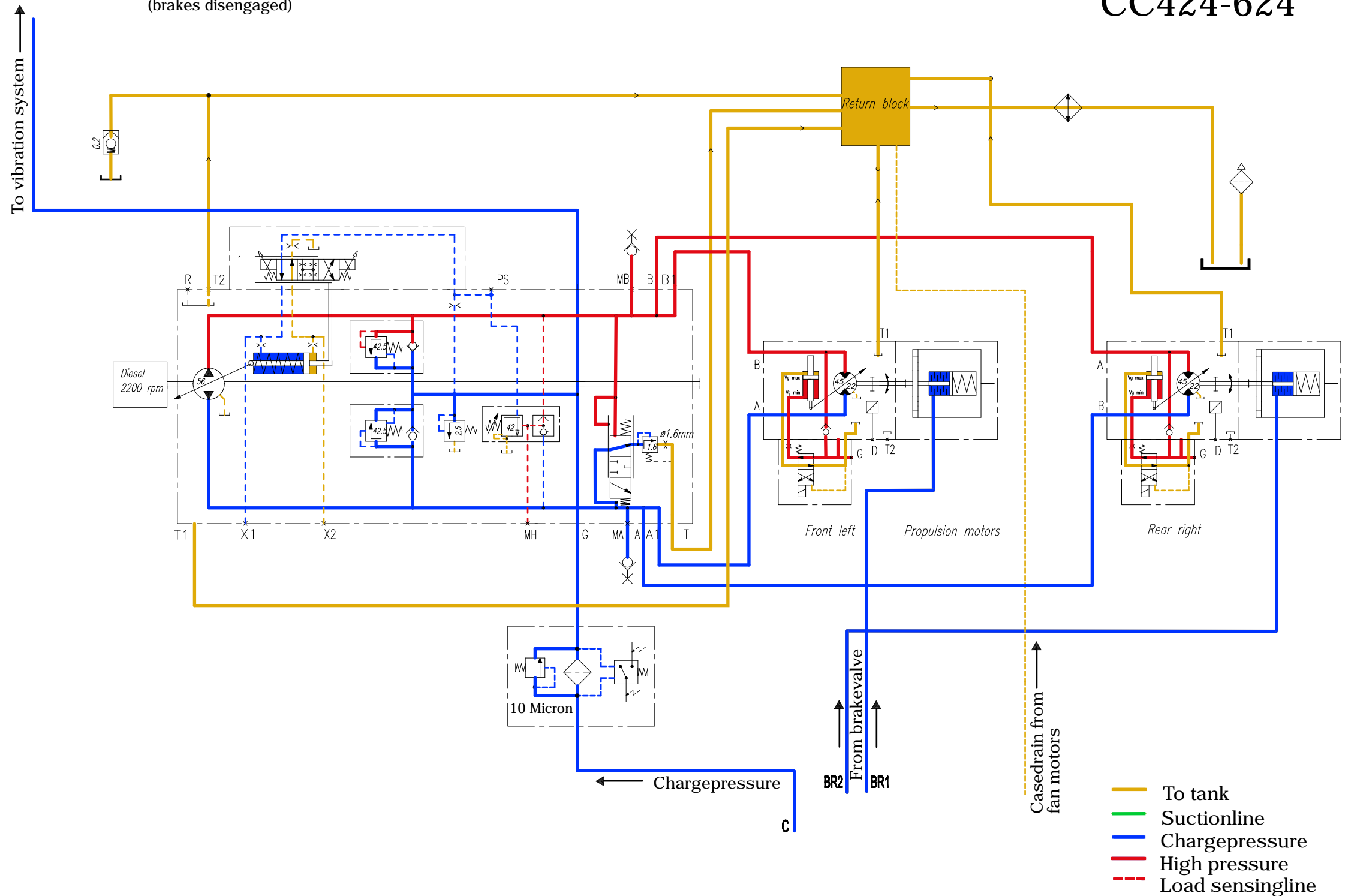
CC424-624

To vibration system



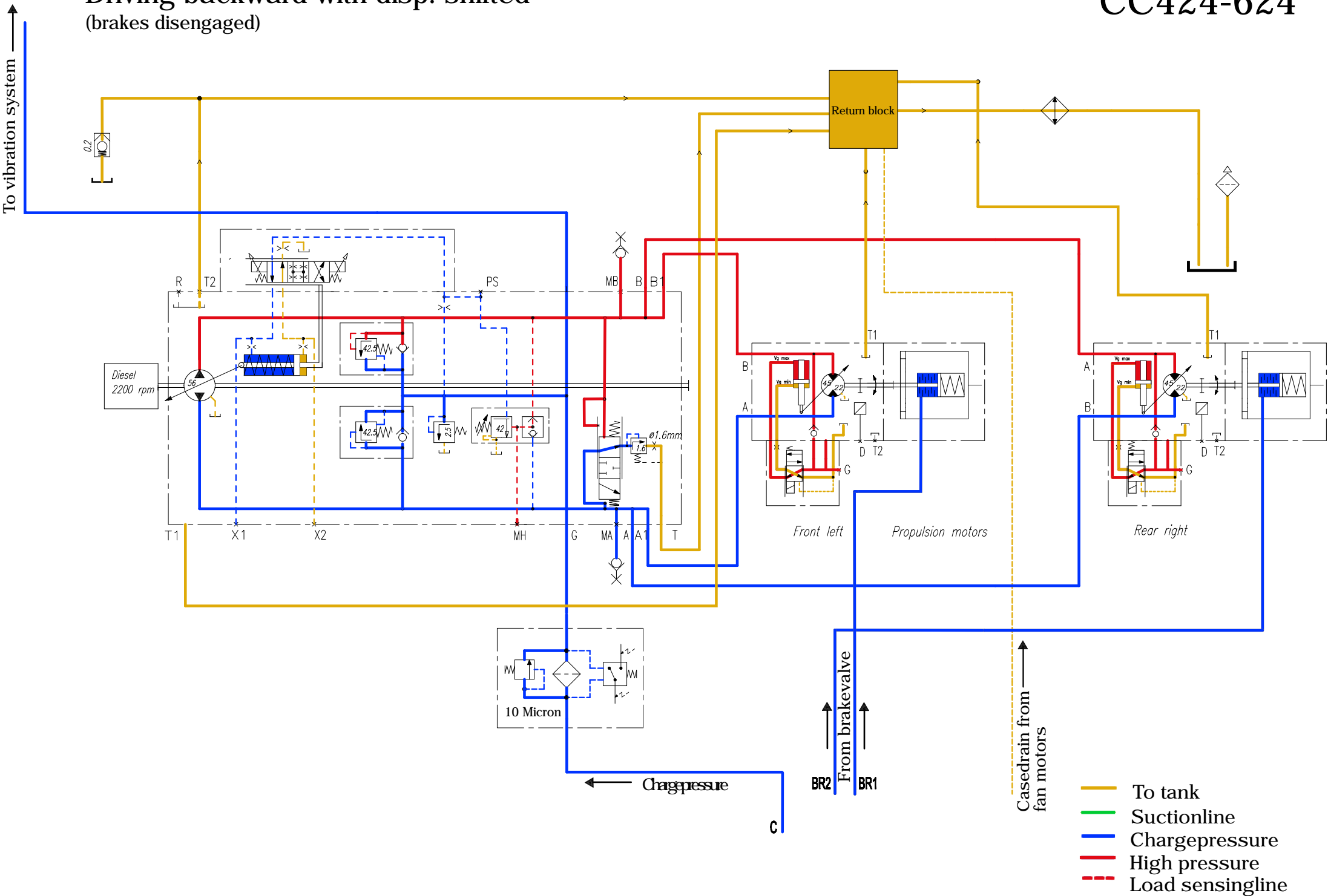
Driving backwards without disp. shifted
(brakes disengaged)

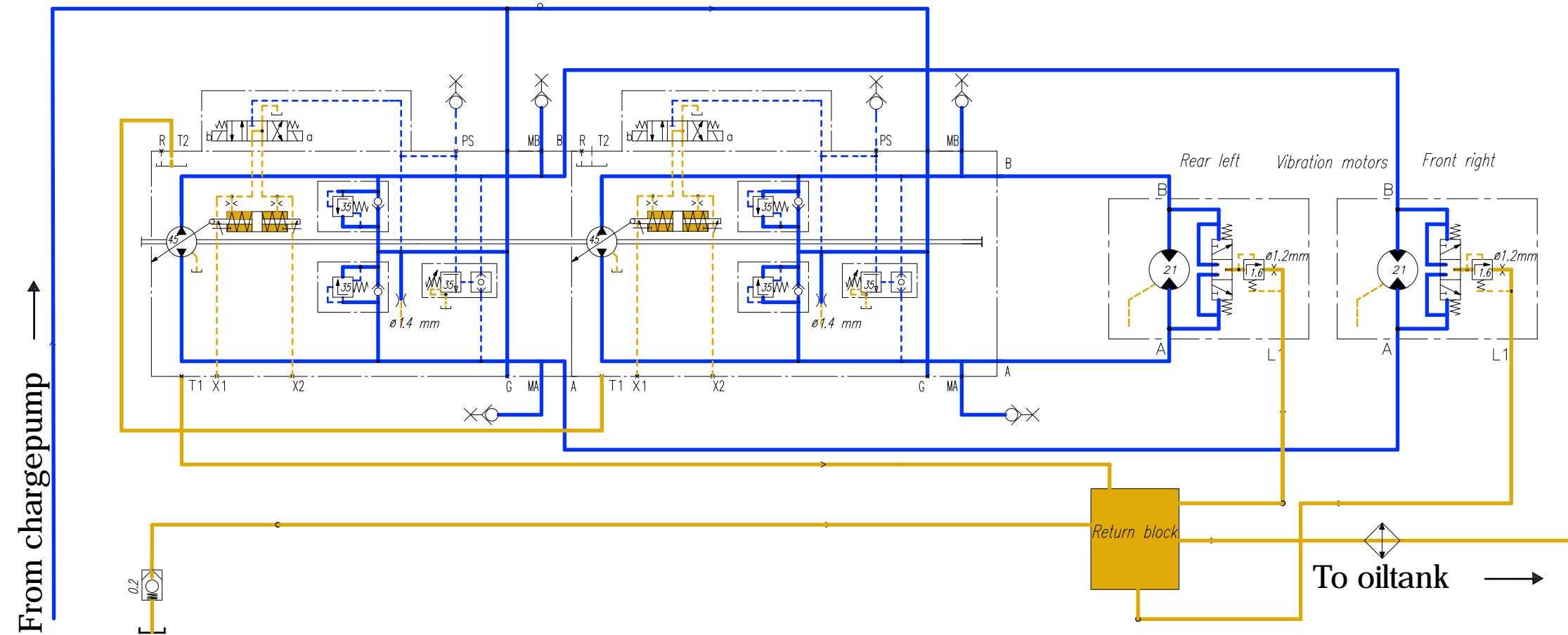
CC424-624



Driving backward with disp. shifted (brakes disengaged)

CC424-624

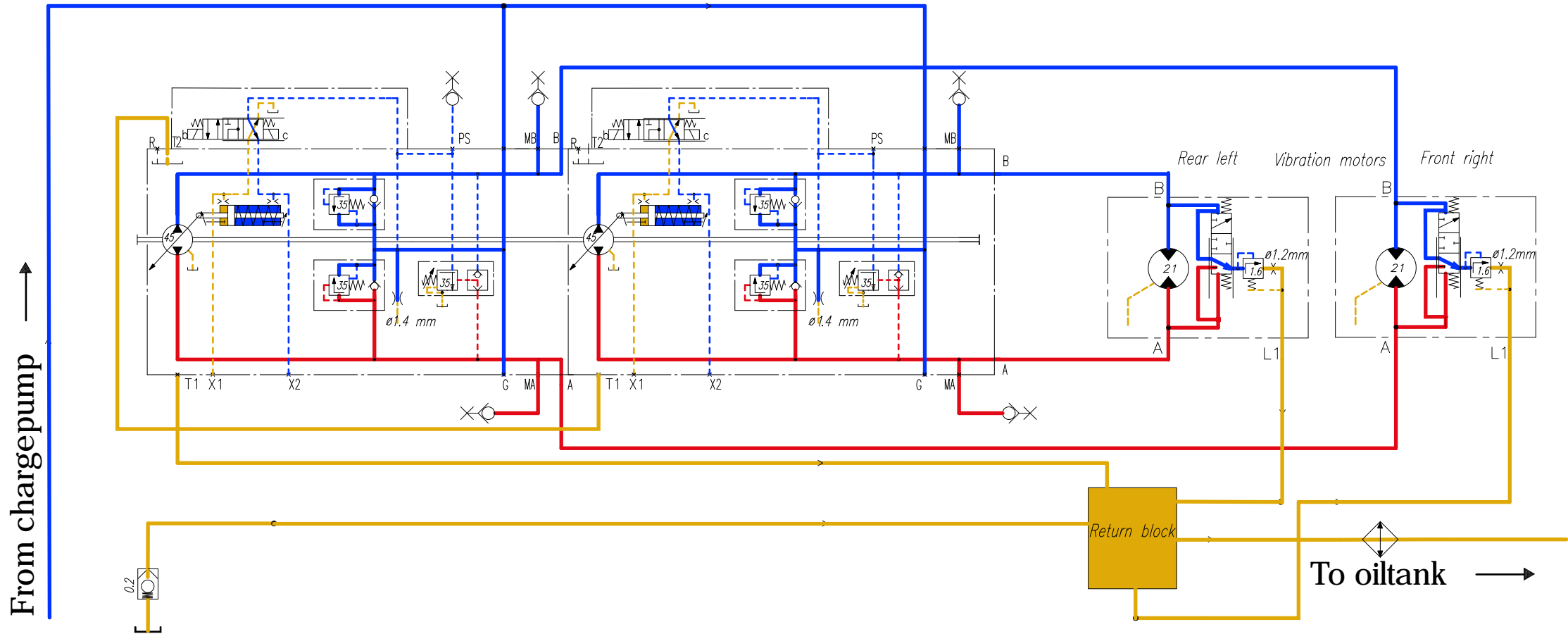




From chargepump

- To tank
- Suctionline
- Chargepressure
- High pressure
- - - Load sensingline

Vibration low



From chargepump →

↕ To oiltank →

- To tank
- Suctionline
- Chargepressure
- High pressure
- - - Load sensingline

