

CLOSE TO OUR CUSTOMERS



WIRTGEN GROUP



WIDOS

Quick User Guide

LANGUAGES:
DE·EN
FR·ES

WIRTGEN

/

VÖGELE

/

HAMM

/

KLEEMANN



CONTENTS

ADVANTAGES	24
------------	----

INSTALLATION	28
--------------	----

APPLICATION	32
-------------	----

UPDATES	42
---------	----



WIDOS IN EVERY-DAY USE

WIDOS is the documentation system of the WIRTGEN GROUP, which allows you to easily and conveniently locate detailed information of your machine.

WIDOS contains the entire spare parts catalogue, all instruction manuals, hydraulic/electric/hosing diagrams, machine data, safety instructions and lots more ...

**...in multiple languages,
of course!**

WIDOS SUPPORT WIRTGEN GmbH

Reinhard-Wirtgen-Strasse 2
53578 Windhagen · Germany

T: +49 26 45 / 131 8888

F: +49 26 45 / 131 583

widos-support@wirtgen.de





The WIRTGEN GROUP does not abandon you after purchasing your machine. **WIDOS** supports you in every area and does not make any compromises.

Thanks to **intuitive navigation**, you can quickly and easily identify the components you are looking for (across all headquarters). For every machine series **comprehensive information** is available including parts lists, images of components and descriptions.

You will find **extensive documentation** on every machine: complete operating and transportation instructions, safety instructions, short maintenance instructions, electric and hydraulic diagrams and lots more.

Should you not find what you are looking for directly, just use the **full-text search** or one of the other **intelligent search functions**!



WIDOS IN EVERY-DAY USE

With **WIDOS**, you can easily and conveniently prepare an **order** for spare parts. Just click the shopping cart and your order is created directly in **WIDOS**.

Notes, which can be added and saved for each component, are especially advantageous. They can be imported and exported, shared with other users and will remain in place even after monthly updates are made. Remarks from the previous **WIDOS** version can be transferred in a straightforward way.

The digital nature of the application and documentation means that you do not have to store any paper archives. It is available any time and is always up-to-date thanks to the regular **update service**.



PRACTICAL TIP

WORKING IN PARALLEL

You are smack in the **middle of the documentation** about your machine, but a colleague urgently needs **information on another machine**?



With **WIDOS**, it is possible to open **multiple windows** and view **different machines**.

Just open a new **WIDOS** window!

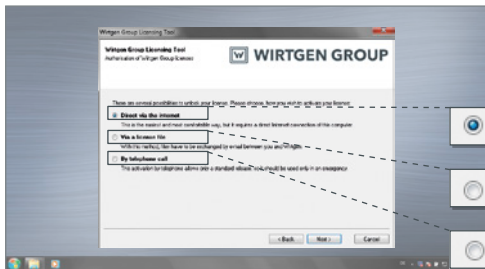


WIDOS

ONLINE OR OFFLINE

WIDOS is available in both **online** and **offline** versions. The online version offers you **global access** to the most current records, and the offline version enables **maximum flexibility at the construction**

site. To activate your license via the **Internet A**, **file B** or **phone C**, **WIDOS** requires that you install the WIRTGEN GROUP Licensing Tool first.



Activation via the Internet A is especially **quick and straightforward!**



Direct via the internet

A



Via a license file

B



By telephone call

C

B WIDOS ACTIVATION USING A LICENSE FILE



- 1 > Fill out the **form license request**
- 2 > **Generate a license request** and save it
- 3 > Send an e-mail with the files to **widos-support@wirtgen.de**
- 4 > Close
- 5 > We will send you a **license file** which you can run on the **WIDOS** computer by double-clicking.



Do you use WIDOS offline?

A computer without Internet access requires activation via license file!

WIDOS LICENSE ACTIVATION VIA TELEPHONE

Contact **WIDOS** support under
+49 26 45 / 131 8888



1 > Have the **installation-ID** displayed on the screen and the completed "**form license request**" at hand.

2 > Enter the **activation code** in the field provided.

3 > Complete the process.

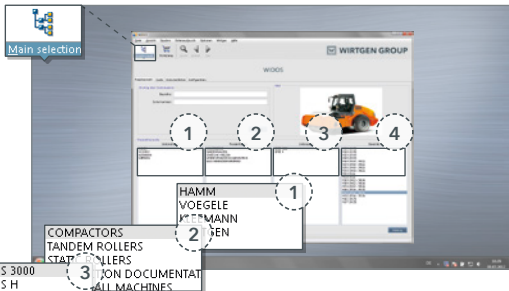


WIDOS APPLICATION

HOW TO FIND A MACHINE



Choosing the **Main selection** menu brings you to the machine of your choice in a quick and straightforward way.



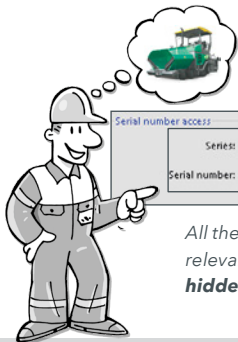
- 1 > Select a **Company**.
- 2 > Select a **Product family**.
- 3 > Select a **Sub-branch**.
- 4 > Select a **Series**.

PRACTICAL TIP

ACCESS VIA SERIAL NUMBER

Do you know the **serial number** of your machine? Simply enter the **series** in the top field and the **serial number** into the field below it.

This will bring you **directly** to the **machine** with all the **information** you are looking for.



Serial number access

Series: 0883

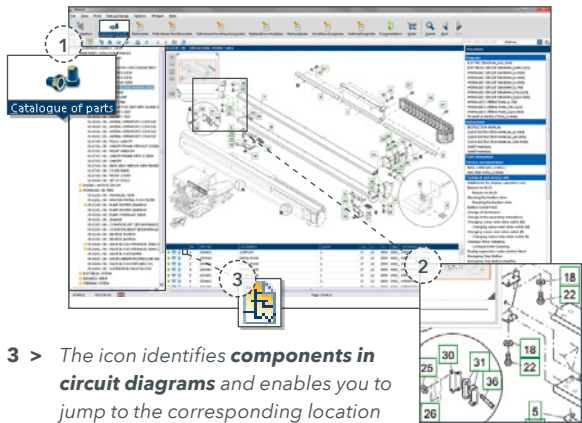
Serial number: 231

All the documents and content not relevant to your machine are **hidden**.



WIDOS APPLICATION

PARTS CATALOGUE



1 > **Identical arrangement** in the parts catalogue, regardless of the brand, provides **information** on the individual components.

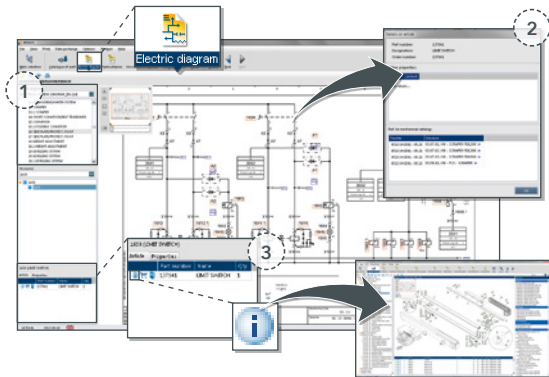
2 > **Exploded view drawings** enable individual components, positions and part numbers to be clearly **identified**.

3 > The icon identifies **components in circuit diagrams** and enables you to jump to the corresponding location in the diagram simply by clicking it.

WIDOS APPLICATION CIRCUIT DIAGRAMS

1 > **Complete** electric, hydraulic and hosing diagrams support you in the fault analysis, maintenance and repair of your machine.

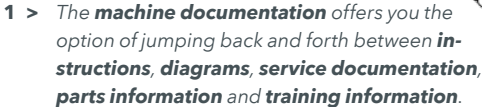
2 > **Selected components** offer **links** to other diagram options, as well as information from the **document library**.



3 > **Part use** shows where the corresponding parts are installed in the machine and enables you to **jump to the parts catalogue**.



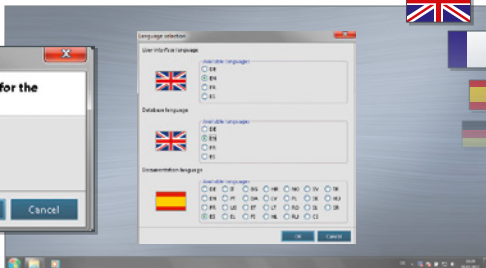
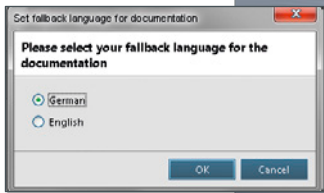
36



WIDOS APPLICATION LANGUAGE SELECTION

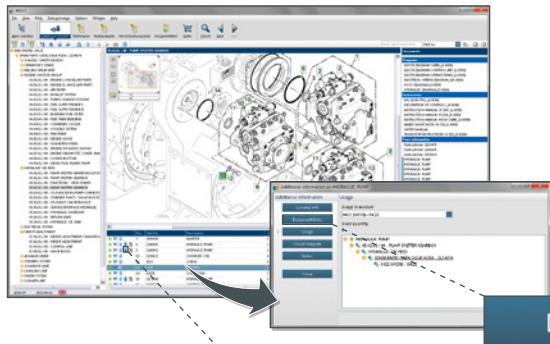
By selecting **Options** and then **Language**, you can specify the language of the **user interface**, the **data-base** (function groups, parts lists, etc.) and the **documentation**.

*If the desired documents are not available in the language you selected, you can set a **fallback language** using the **WIRTGEN** menu item.*



WIDOS APPLICATION

DOCUMENT LINKS



All documents and chapters linked to the selected part or assembly can be found in the **document links**.

If **document links** exist in the parts catalogue, the following icon appears:

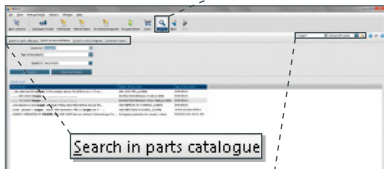


The selected document can be opened by double-clicking in the **Documentation** window.

PRACTICAL TIP

SEARCHING AND FINDING

WIDOS offers a number of variations of **systematic search**.



Search in parts catalogue

Search in documentation

Search in circuit diagrams

Combined Search

scraper



Document search



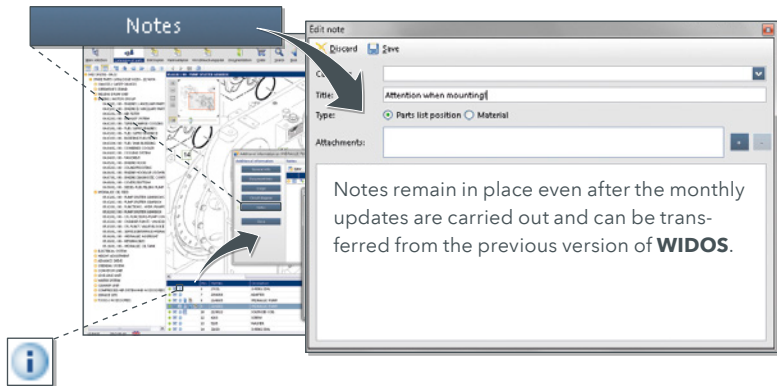
By **searching** using the **main navigation**, **filter functions** or the **full-text search**, you can find the solution to your problem in the blink of an eye!



The search function in the top-right corner is available **on every page of the application!**



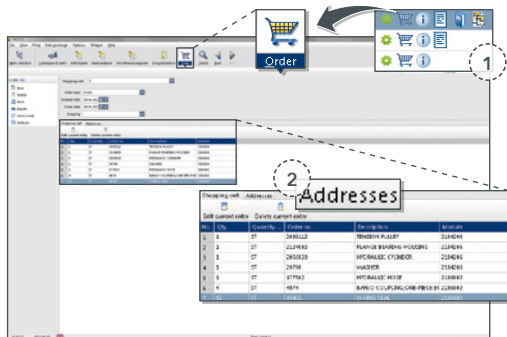
WIDOS FUNCTION NOTES



This icon enables you to create **notes** and **comments**, use them as you please and share them with other users in **WIDOS**.

Another advantage is the **differentiation** between notes at the **parts list position** and those at the **material number**.

WIDOS FUNCTION ORDER



1 > **Have you found the parts you are looking for?** Simply clicking them puts them in your shopping cart!

2 > Supplement your order form with **saved personal information** like addresses, master data or the order and shipment modes. This **simplifies the process for future orders** as well!

You can then send the order via **e-mail** or **fax** as desired.

This enables you to send your order directly to your service and sales company.



WIDOS ALWAYS UP-TO-DATE

After installing it, **WIDOS** will remind you of possible updates every month. They are free of charge and ensure that you always have the up-to-date information you need!

If your computer is connected to the Internet, the **update is loaded in the background**. An information window appears regularly to users of the online version.

You do not have an Internet connection?

For a small fee, your service and sales company can also send you the updates on a USB stick.

**We hope you
enjoy using
WIDOS!**



WIDOS FUNCTION LEGEND



Two gears – symbolise an assembly.



Gear – symbolises a component.



Additional information – provides general information, document links and use in diagrams or notes in a separate window.



Order – This item can be ordered and placed in your shopping cart by double-clicking it.



Documentation – visualises documentation on an assembly or component.



Notes – Information and comments on a component/ assembly/drawing/document exist.



Circuit diagram – symbolises the linking of a mechanical part and the integrated circuit diagram.



All rights reserved. In particular, this manual may not be photomechanically reproduced or stored in electronic media without the prior written permission of WIRTGEN GmbH. The names of software and hardware referred to in this manual are in most cases registered trademarks, and as such are subject to legal regulations. The content of this documentation is provided solely for information purposes, may be altered at any time and represents no binding obligation on the part of WIRTGEN GmbH.

WIRTGEN GmbH assumes no responsibility or liability for any errors contained therein.

Published by

WIRTGEN GmbH

Reinhard-Wirtgen-Str. 2

53578 Windhagen

Germany

T: +49 26 45 / 131 0

F: +49 26 45 / 131 813

widos-support@wirtgen.de



www.wirtgen-group.com



WIRTGEN GROUP



WIDOS SUPPORT
WIRTGEN GmbH

Reinhard-Wirtgen-Str. 2
53578 Windhagen
Germany

T: +49 2645 / 131 8888

F: +49 2645 / 131 583

widos-support@wirtgen.de



www.wirtgen-group.com