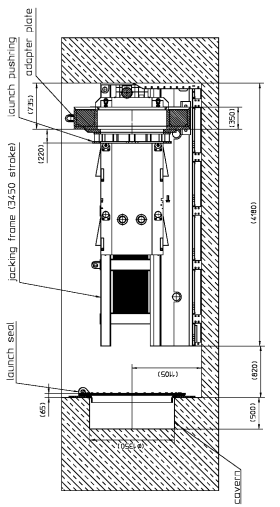


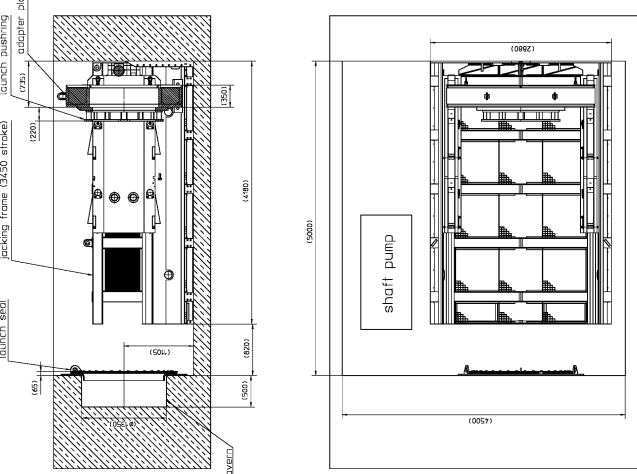
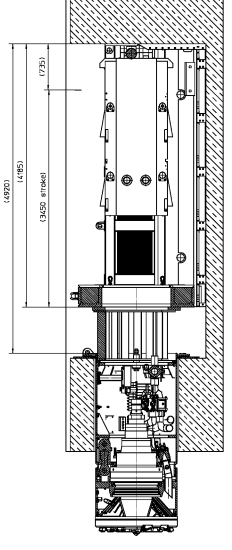
STEP 1

mount jacking frame, launch seat, adapter plate and launch pushing



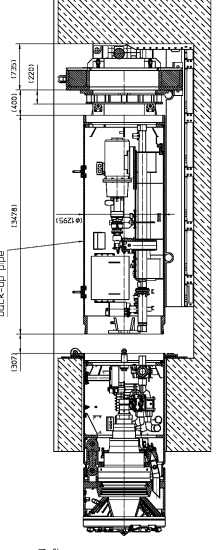
STEP 5

stroke



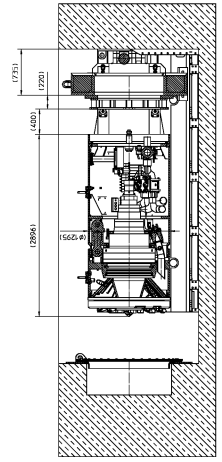
STEP 6

move in jacking frame remove spacer and adapter plate, let down back-up pipe



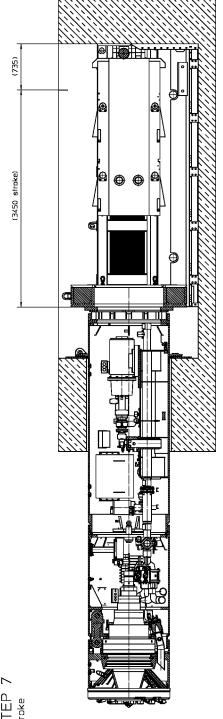
STEP 2

let down tunnelling machine



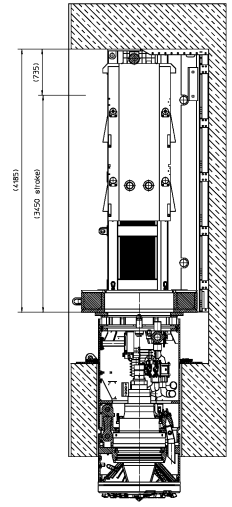
STEP 7

stroke



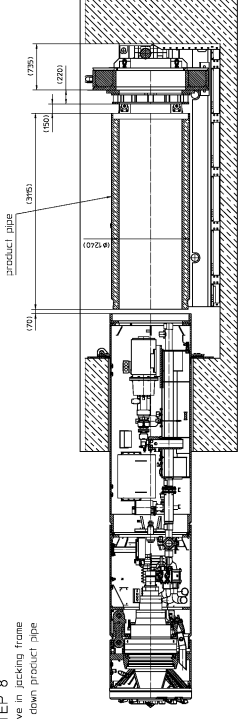
STEP 3

stroke



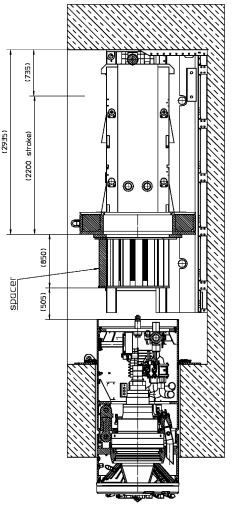
STEP 8


move in jacking frame let down product pipe



STEP 4

move in jacking frame remove launch pushing and mount spacer



		START-UP SITUATION APPARATUSSTATION	
DATE: _____ DRAWING NO.: _____ PROJECT NO.: _____		DRAWING NO.: 440-001-000-00 PROJECT NO.: _____ DATE: _____	
NAME: _____ POSITION: _____ DEPARTMENT: _____		NAME: _____ POSITION: _____ DEPARTMENT: _____	
APPROVED BY: _____ DATE: _____		APPROVED BY: _____ DATE: _____	