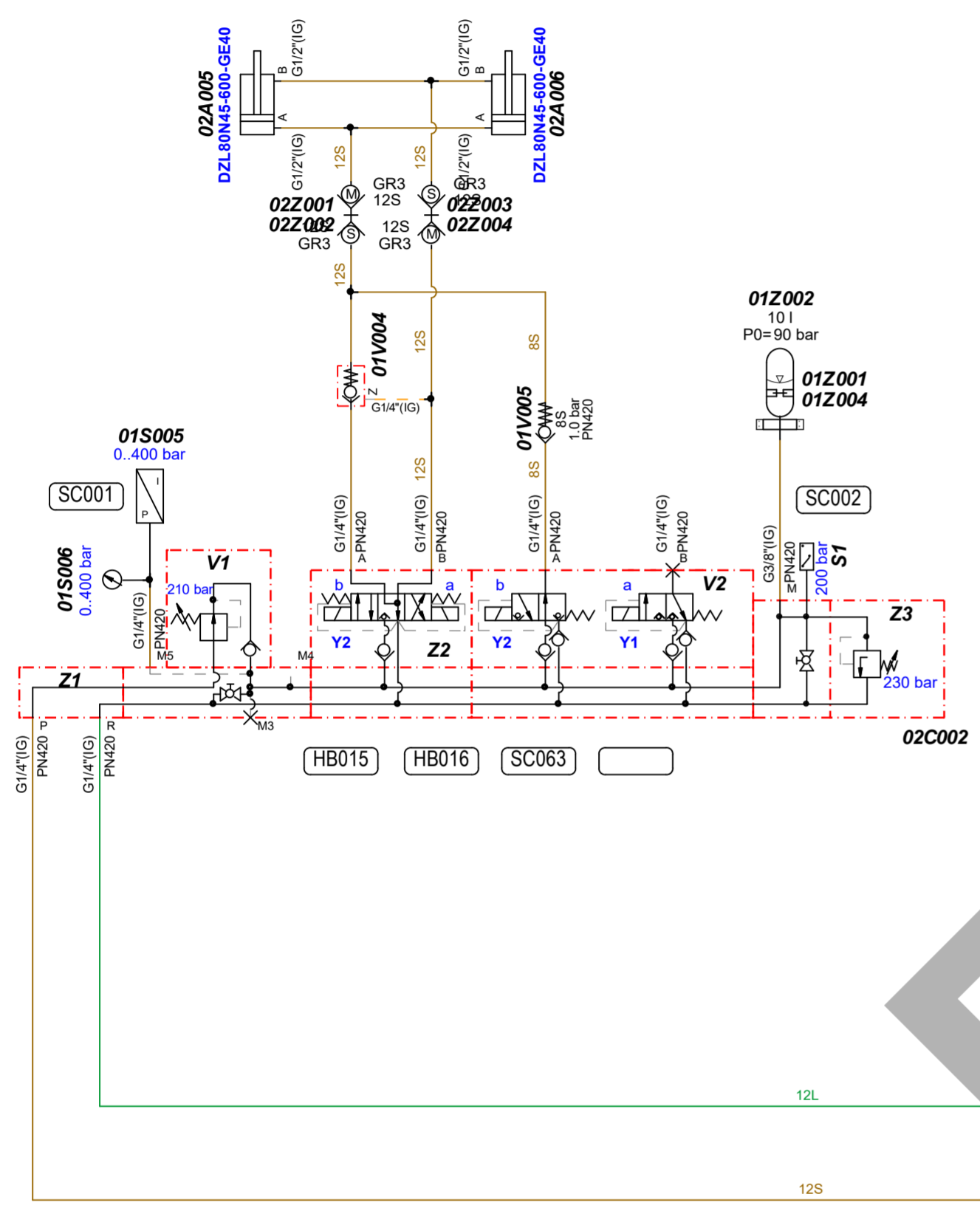
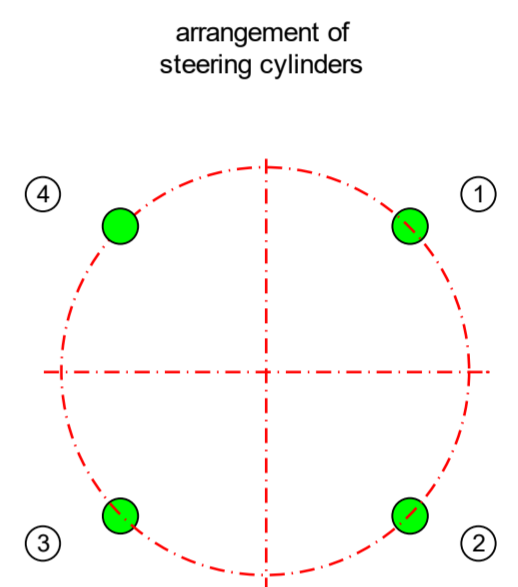
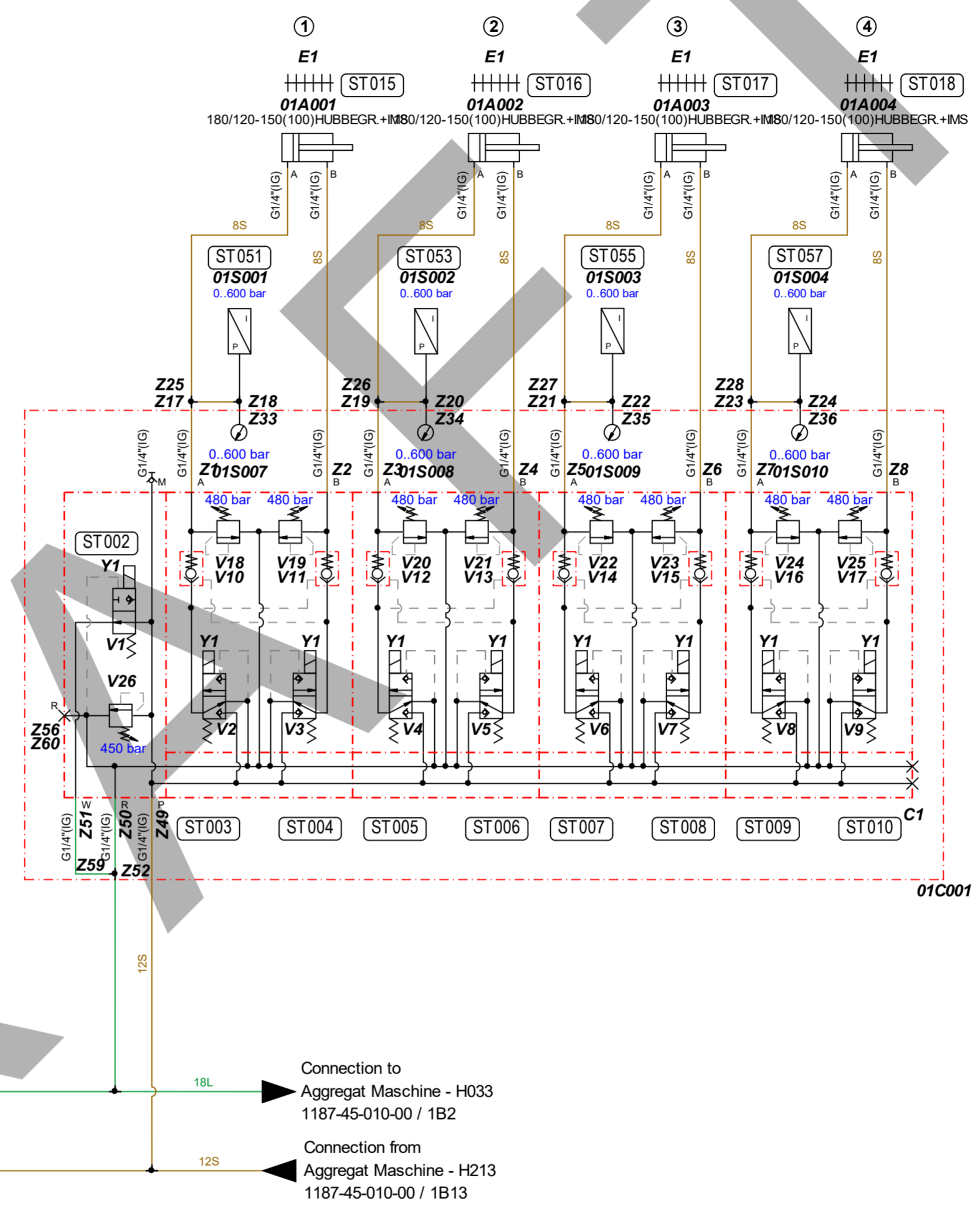


Screw conveyor gate



Steering Cylinders




Connection to
Aggregat Maschine - H033
1187-45-010-00 / 1B2

Connection from
Aggregat Maschine - H213
1187-45-010-00 / 1B13

checked

Editor: BELGARTC

Date: 10.08.2022

A		02Z001, 02Z002, 02Z003, 02Z004 ergänzt (1B2)		20.07.2022	SCHWENDS		
		Fertigungsfreigabe.		16.03.2022	SCHWENDS	05.04.2022	FLITTMER
Index	Revision			Date	Editor	Date	Ch. by
The reproduction, distribution and utilization of this document as well as the communication of the contents to others without express authorization is prohibited. Offenders will be held liable for the payment of damages. All rights reserved in the event of a patent, utility model or design. ISO 16016							
HERRENKNECHT AG Schlehenweg 2 D-77963 Schwanau Tel.: 07824/302-0 Fax: 07824/3403 Info@Herrenknecht.de		 Tunnelvortriebstechnik		Type of drawing schematic	Project M-722M	Material	
				Name HYDR.SCHEMA STEUERZYL/SCHIEBER M-722M EPB2000TB-2380PR			
Date 20.07.2022		Name SCHWENDS		Drawing no. 1187-45-001-00		Page no. Index 1 / 1 A	
Checked 10.08.2022		BELGARTC		Norm 40619980		Developed from Weight/kg Format A2	
approved							

09.09.2022
[Structure]

Strukturstückliste Modular parts list



Projekt
Teilenummer 40619980
HYDR.SCHEMA STEUERZYL/SCHIEBER
Zeichnungsnr. 1187-45-001-00

Project
Part number 40619980
HYDR.DIAGR.CONTR.CYL./GATE V.
Drawing no. 1187-45-001-00

Item	Operating resources structure	Document path	Material number	description	Designation	Drawing no.	Quantity
24	01A001	1B5	20001112	STEUERZYLINDER	CONTROL CYLINDER	20001112	1,00 ST
24.1			20001167	STEUERZYLINDER	CONTROL CYLINDER		1,00 ST
24.2			26400865	WEGMESSSYSTEM	STROKE MEASUREMENT SYSTEM		1,00 ST
25	01A002	1B6	20001112	STEUERZYLINDER	CONTROL CYLINDER	20001112	1,00 ST
25.1			20001167	STEUERZYLINDER	CONTROL CYLINDER		1,00 ST
25.2			26400865	WEGMESSSYSTEM	STROKE MEASUREMENT SYSTEM		1,00 ST
26	01A003	1B6	20001112	STEUERZYLINDER	CONTROL CYLINDER	20001112	1,00 ST
26.1			20001167	STEUERZYLINDER	CONTROL CYLINDER		1,00 ST
26.2			26400865	WEGMESSSYSTEM	STROKE MEASUREMENT SYSTEM		1,00 ST
27	01A004	1B7	20001112	STEUERZYLINDER	CONTROL CYLINDER	20001112	1,00 ST
27.1			20001167	STEUERZYLINDER	CONTROL CYLINDER		1,00 ST
27.2			26400865	WEGMESSSYSTEM	STROKE MEASUREMENT SYSTEM		1,00 ST
46	01C001	1D7	40428138	STEUERBLOCK	CONTROL BLOCK	40428138_A	1,00 ST
46.1	C1		27200905	STEUERBLOCK	CONTROL BLOCK	27200905	1,00 ST
46.1.1	V1		27100308	WEGESITZVENTIL	DIRECTIONAL SEATED VALVE		1,00 ST
46.1.1.1			27903065	MAGNET STECKDOSE	MAGNETIC SOCKET OUTLET		1,00 ST
46.1.2	V2-V9		27100311	WEGESITZVENTIL	DIRECTIONAL SEATED VALVE		8,00 ST
46.1.3	V10-V17		27100312	RÜCKSCHLAGVENTIL	CHECK VALVE		8,00 ST
46.1.4	V18-V28		27100286	DRUCKBEGRENZUNGSVENTIL	PRESSURE LIMITING VALVE		9,00 ST
46.10	Z45-Z48		27403604	VERSCHLUSSSCHRAUBE	PLUG SCREW	27403604	4,00 ST
46.11	Z49		27403782	EINSCHRAUBVERSCHRAUBUNG	MALE STUD CONNECTOR	27403782	1,00 ST
46.12	Z50-Z51		27403778	EINSCHRAUBVERSCHRAUBUNG	MALE STUD CONNECTOR	27403778	2,00 ST
46.13	Z52		27403210	L-ANSCHLUSSSTUTZEN	SWIVEL NUT RUN TEE	27403210	1,00 ST
46.14	Z53		27404009	VERSCHLUSSKEGELVERSCHRAUBUNG	CLOSING TAPER FITTING	27404009	1,00 ST
46.15	Z54		27403999	VERSCHLUSSKEGELVERSCHRAUBUNG	CLOSING TAPER FITTING	VKAM12LCF	1,00 ST
46.17	Z56		27403769	EINSCHRAUBVERSCHRAUBUNG	MALE STUD CONNECTOR	27403769	1,00 ST
46.19	Z59		40581965	ROHRLEITUNG GEBOGEN	PIPELINE BENT	39137573	1,00 ST
46.2	Z1-Z8		27403766	EINSCHRAUBVERSCHRAUBUNG	MALE STUD CONNECTOR	27403766 1 4	8,00 ST
46.20	Z60		27403998	VERSCHLUSSKEGELVERSCHRAUBUNG	CLOSING TAPER FITTING	27403998 PARKER	1,00 ST

09.09.2022
[Structure]

Strukturstückliste Modular parts list



Projekt
Teilenummer 40619980
HYDR.SCHEMA STEUERZYL/SCHIEBER
Zeichnungsnr. 1187-45-001-00

Project
Part number 40619980
HYDR.DIAGR.CONTR.CYL./GATE V.
Drawing no. 1187-45-001-00

Item	Operating resources structure	Document path	Material number	description	Designation	Drawing no.	Quantity
46.3	Z9-Z16		27404007	VERSCHLUSSKEGELVERSCHRAUBUNG	CLOSING TAPER FITTING	27404007	8,00 ST
46.4	Z17-Z24		27403207	L-ANSCHLUSSSTUTZEN	SWIVEL NUT RUN TEE	27403207	8,00 ST
46.5	Z25-Z28		27403392	MANOMETERVERSCHRAUBUNG+DKI	PRESSURE GAUGE FITTING	27403392	4,00 ST
46.7	Z33-Z36		27403393	MANOMETERVERSCHRAUBUNG+DKI	PRESSURE GAUGE FITTING	27403393	4,00 ST
46.9	Z41-Z44		27403606	VERSCHLUSSSCHRAUBE	PLUG SCREW	27403606	4,00 ST
28	01S001	1B5	27501963	DRUCKMESSUMFORMER	PRESSURE TRANSDUCER	27501963	1,00 ST
29	01S002	1B5	27501963	DRUCKMESSUMFORMER	PRESSURE TRANSDUCER	27501963	1,00 ST
30	01S003	1B6	27501963	DRUCKMESSUMFORMER	PRESSURE TRANSDUCER	27501963	1,00 ST
31	01S004	1B7	27501963	DRUCKMESSUMFORMER	PRESSURE TRANSDUCER	27501963	1,00 ST
33	01S005	1C1	27501962	DRUCKMESSUMFORMER	PRESSURE TRANSDUCER	27501962	1,00 ST
34	01S006	1C1	27500017	MANOMETER	PRESSURE GAUGE	27500017	1,00 ST
41	01S007	1B5	27501997	MANOMETER	PRESSURE GAUGE		1,00 ST
42	01S008	1B5	27501997	MANOMETER	PRESSURE GAUGE		1,00 ST
43	01S009	1B6	27501997	MANOMETER	PRESSURE GAUGE		1,00 ST
44	01S010	1B7	27501997	MANOMETER	PRESSURE GAUGE		1,00 ST
37	01V004	1C2	27100440	RÜCKSCHLAGVENTIL ENTSPERRBAR	CHECK VALVE UNLOCKABLE		1,00 ST
38	01V005	1C2	27103830	RÜCKSCHLAGVENTIL	CHECK VALVE	27103830	1,00 ST
45	01Z001	1C3	27900040	BEFESTIGUNGSKONSOLE	MOUNTING CONSOLE	27900040	1,00 ST
35	01Z002	1C3	27900827	BLASENSPEICHER	BLADDER ACCUMULATOR	27900827	1,00 ST
36	01Z004	1C3	27900039	SHELLE	CLAMP	27900039	1,00 ST
32	02A005	1B1	20002167	HYDRAULIKZYLINDER	HYDRAULIC CYLINDER	20002167	1,00 ST
32.50			20100445	DICHTSATZ HYDRAULIKZYLINDER	SEALING KIT HYDR.CYLINDER	440-10240	1,00 ST
47	02A006	1B2	20002167	HYDRAULIKZYLINDER	HYDRAULIC CYLINDER	20002167	1,00 ST
47.50			20100445	DICHTSATZ HYDRAULIKZYLINDER	SEALING KIT HYDR.CYLINDER	440-10240	1,00 ST
39	02C002	1D3	40501701	STUEBERBLOCK	CONTROL BLOCK	6963 1088-41	1,00 ST
39.1	Z1		27103670	ANSCHLUSSBLOCK HYDRAULIK	CONNECTION BLOCK HYDRAULIC		1,00 ST
39.2	V1		27103671	WEGESCHIEBERSEGMENT	DIRECTIONAL SEGMENT		1,00 ST
39.2.1	V1		27103278	DRUCKREGELVENTIL	PRESSURE CONTROL VALVE		1,00 ST
39.2.18	Z1		40035820	KUGEL	BALL		1,00 ST

09.09.2022
[Structure]

Strukturstückliste Modular parts list



Projekt
Teilenummer 40619980
HYDR.SCHEMA STEUERZYL/SCHIEBER
Zeichnungsnr. 1187-45-001-00

Project
Part number 40619980
HYDR.DIAGR.CONTR.CYL./GATE V.
Drawing no. 1187-45-001-00

Item	Operating resources structure	Document path	Material number	description	Designation	Drawing no.	Quantity
39.2.19	Z2		40035823	ZYLINDERSCHRAUBE	HEX.SOCKET HEAD CAP SCREW		1,00 ST
39.2.20	D1		28001323	O-RING	O-RING		1,00 ST
39.3	V2		27104470	WEGESCHIEBERSEGMENT	DIRECTIONAL SEGMENT		1,00 ST
39.4	V3		27202075	WEGESCHIEBERSEGMENT	DIRECTIONAL SEGMENT	6955 8202-00	1,00 ST
39.4.1	Y1		27902826	ELEKTROMAGNET	ELECTROMAGNET		1,00 ST
39.5	V4		40502125	ABSCHLUSSPLATTE HYDRAULIK	END PANEL HYDRAULIC	6963 1091-79	1,00 ST
39.5.1	S1		27100184	DRUCKSCHALTGERÄT	PRESSURE SWITCH DEVICE		1,00 ST
39.5.2			40512439	DRUCKBEGRENZUNGSVENTIL	PRESSURE LIMITING VALVE	6963 1058-64	1,00 ST
53	02V007	1D3	40655352	DRUCKBEGRENZUNGSVENTIL	PRESSURE LIMITING VALVE	6963 1010-12	1,00 ST
52	02V008	1C1	27103644	DRUCKREGELVENTIL	PRESSURE CONTROL VALVE		1,00 ST
48	02Z001	1B2	40614607	SCHRAUBKUPPLUNG MUFFE	SCREW COUPLING SOCKET	PVV3.1320.402	1,00 ST
49	02Z002	1B2	40615106	SCHRAUBKUPPLUNG STECKER	SCREW COUPLING PLUG	PVV3.1320.403E	1,00 ST
50	02Z003	1B2	40615106	SCHRAUBKUPPLUNG STECKER	SCREW COUPLING PLUG	PVV3.1320.403E	1,00 ST
51	02Z004	1B2	40614607	SCHRAUBKUPPLUNG MUFFE	SCREW COUPLING SOCKET	PVV3.1320.402	1,00 ST