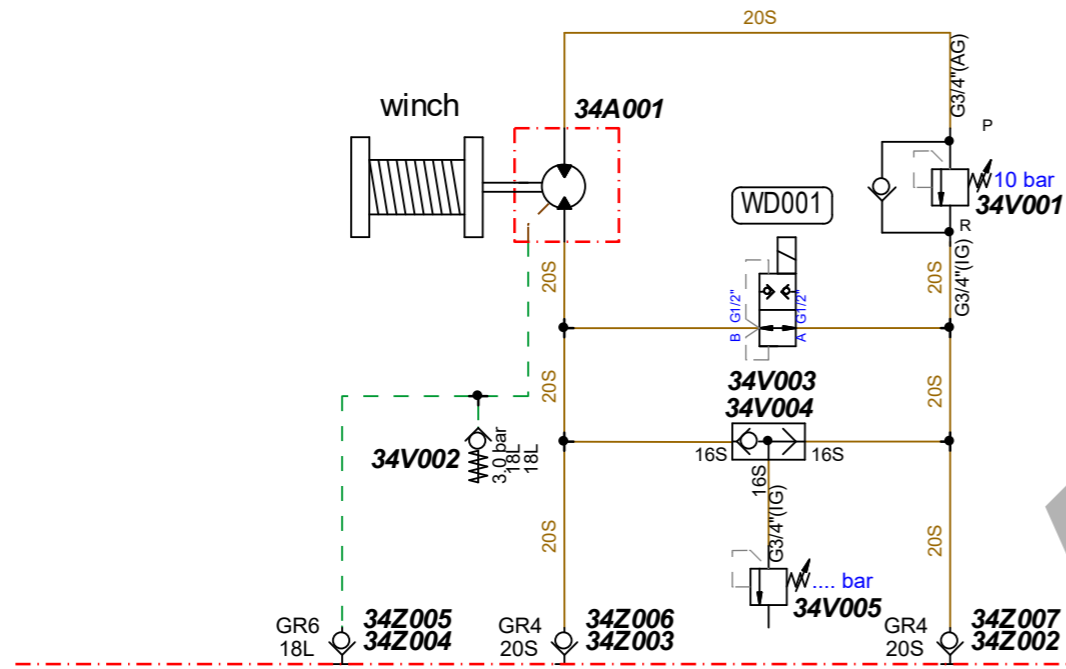


+1.3939
Standard



| winch Mat.-Nr.: | 34V005 Einstellwert |
|--------------------|------------------------|
| 4037 8784 | 180 bar |
| 4023 1943 | 400 bar |
| 4023 1942 | 400 bar |
| 4023 1941 | 400 bar |
| 4023 1940 | 400 bar |
| 4023 1937 | 400 bar |
| 4023 1936 | 370 bar |
| 4023 1935 | 370 bar |
| 4023 1934 | 370 bar |
| 4023 1931 | 180 bar |
| 4023 1930 | 180 bar |
| 4023 1929 | 180 bar |
| 4023 1927 | 180 bar |
| 4023 1926 | 200 bar |
| 4023 1924 | 200 bar |
| 4023 1923 | 200 bar |
| 4023 1922 | 200 bar |
| 4023 1915 | 400 bar |
| 4023 1911 | 400 bar |
| 4023 1908 | 175 bar |
| 4023 1899 | 175 bar |
| 4022 1183 | 130/160 bar |
| 2510 2201 | 200 bar |
| 2510 2206 | 130/160 bar |

fehlende Winden, siehe Konstruktionszeichnungen

approved for manufacturing
subject to modifications

checker: SCHWENDS

Date: 13.11.2018

| | | | | | |
|-------|---------------------------------------|------------|----------|------------|----------|
| G | Tabelle Winde Mat.-Nr. ergänzt (1A6) | 13.11.2018 | FLITTNEK | 13.11.2018 | SCHWENDS |
| F | Tabelle Winde Mat.-Nr. geändert (1A6) | 16.11.2016 | JUNGHANM | 30.11.2016 | METZGER |
| E | Tabelle ergänzt (1D6) | 05.10.2016 | JUNGHANM | 06.10.2016 | HEIZMANM |
| Index | Revision | Date | Editor | Date | Ch. by |

The reproduction, distribution and utilization of this document as well as the communication of the contents to others without express authorization is prohibited. Offenders will be held liable for the payment of damages. All rights reserved in the event of a patent, utility model or design. ISO 16016

| | | | | | | |
|--|------------|----------|--|---|------------------------------|----------------|
| HERRENKNECHT AG Schlehenweg 2 D-77963 Schwanau Tel.: 07824/302-0 Fax: 07824/3403 Info@Herrenknecht.de | | | | Type of drawing schematic | Project AVN_Standard_3939 | Material |
| | | | | Name HYDRAULIKSCHEMA WINDE 20S (SCHACHT- OHNE BREMSE) | | |
| Date | | Name | | Draw ing no. | Page no. | Index |
| Edited | 13.11.2018 | FLITTNEK | | 3939-45-056-00 | 1 / 1 | G |
| Checked | 13.11.2018 | FLITTNEK | | Norm | Article number | Developed from |
| approved | 13.11.2018 | SCHWENDS | | | 40113471 | Weight/kg |
| | | | | Format | A3 | |

09.09.2022
[Structure]

Strukturstückliste Modular parts list



Projekt
Teilenummer 40113471
HYDRAULIKSCHEMA WINDE
Zeichnungsnr. 3939-45-056-00 G

Project
Part number 40113471
HYDRAULIC DIAGRAM WINCH
Drawing no. 3939-45-056-00 G

| Item | Operating resources structure | Document path | Material number | description | Designation | Drawing no. | Quantity |
|------|-------------------------------|---------------|-----------------|-------------------------|--------------------------|---------------|----------|
| 5 | 34A001 | 1B3 | | | | | 1,00 ST |
| 7 | 34V001 | 1B4 | 27100826 | DRUCKVENTIL | PRESSURE VALVE | | 1,00 ST |
| 11 | 34V002 | 1C3 | 27103844 | RÜCKSCHLAGVENTIL | CHECK VALVE | RHD18L3BOMDCF | 1,00 ST |
| 12 | 34V003 | 1B3 | 27106981 | WEGESITZVENTIL | DIRECTIONAL SEATED VALVE | | 1,00 ST |
| 13 | 34V004 | 1C4 | 27100418 | WECHSELVENTIL | SHUTTLE VALVE | | 1,00 ST |
| 14 | 34V005 | 1C3 | 27101458 | DRUCKBEGRENZUNGSVENTIL | PRESSURE LIMITING VALVE | | 1,00 ST |
| 6 | 34Z001 | 1B3 | | | | | 1,00 ST |
| 8 | 34Z002 | 1C4 | 27400104 | SCHRAUBKUPPLUNG STECKER | SCREW COUPLING PLUG | 27400104 | 1,00 ST |
| 9 | 34Z003 | 1C3 | 27300014 | SCHRAUBKUPPLUNG MUFFE | SCREW COUPLING SOCKET | 27300014 | 1,00 ST |
| 10 | 34Z004 | 1C2 | 27400106 | SCHRAUBKUPPLUNG STECKER | SCREW COUPLING PLUG | 27400106 | 1,00 ST |
| 15 | 34Z005 | 1C2 | 29900592 | STAUBSCHUTZKAPPE | DUST PROTECTION CAP | 29900592 | 1,00 ST |
| 16 | 34Z006 | 1C3 | 29901953 | SCHUTZKAPPE | PROTECTIVE CAP | 29901953 | 1,00 ST |
| 17 | 34Z007 | 1C4 | 29901954 | STAUBSCHUTZSTECKER | DUST PROTECTION PLUG | 29901954 | 1,00 ST |