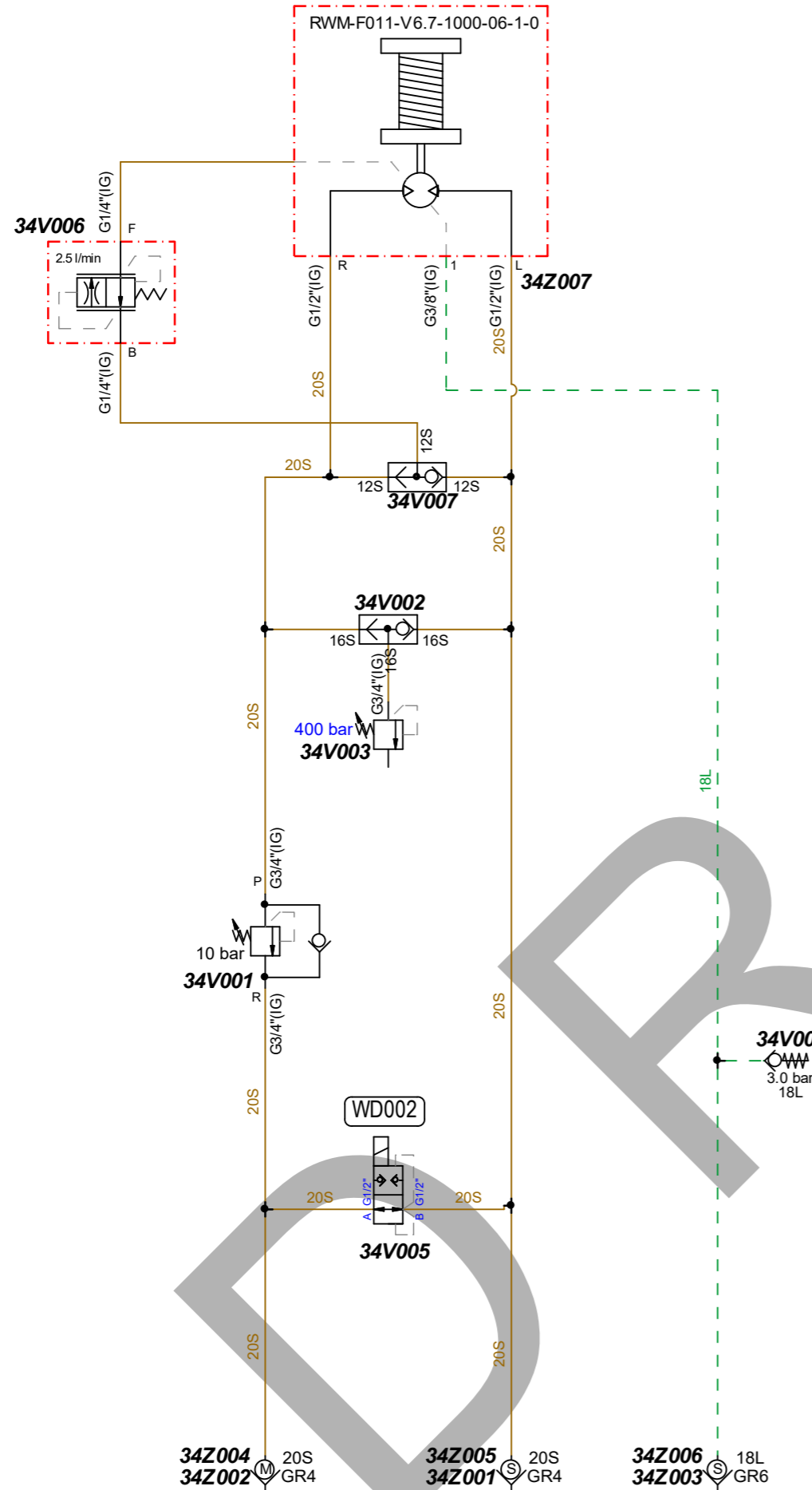


+1.3939
Standard




approved for manufacturing
subject to modifications

checker: METZGERS

Date: 18.02.2022

B	34V006, 34Z003, 34Z006 Mat.-Nr. geändert (1B4, 1F2)	18.02.2022	FLITTNEK	18.02.2022	METZGERS
A	34V006, 34V007 ergänzt (1B-C3-4)	24.03.2021	MARXA	30.03.2021	FLITTNEK
	Fertigungsfreigabe	08.07.2019	FLITTNEK	11.07.2019	METZGERS
Index	Revision	Date	Editor	Date	Ch. by

The reproduction, distribution and utilization of this document as well as the communication of the contents to others without express authorization is prohibited. Offenders will be held liable for the payment of damages. All rights reserved in the event of a patent, utility model or design. ISO 16016

HERRENKNECHT AG Schlehenweg 2 D-77963 Schwanau Tel.: 07824/302-0 Fax: 07824/3403 Info@Herrenknecht.de			Type of drawing schematic	Project AVN_Standard_3939	Material
			Name HYDRAULIKSCHEMA WINDE		
			RWM-F011-V6.7-1000-06-1-0		
Date		Name		Draw ing no.	Page no.
Edited	18.02.2022	FLITTNEK		3939-45-056-05	1 / 1
Checked	18.02.2022	FLITTNEK		Norm	Index
approved	18.02.2022	METZGERS		Article number 40447489	B
			Developed from	Weight/kg	Format
					A3

A
B
C
D
E
F

A
B
C
D
E
F

1 2 3 4 5 6 7 8

1 2 3 4 5 6 7 8

09.09.2022
[Structure]

Strukturstückliste Modular parts list



Projekt
Teilenummer 40447489
HYDRAULIKSCHEMA WINDE
Zeichnungsnr. 3939-45-056-05 B

Project
Part number 40447489
HYDRAULIC DIAGRAM WINCH
Drawing no. 3939-45-056-05 B

Item	Operating resources structure	Document path	Material number	description	Designation	Drawing no.	Quantity
1	34V001	1D2	27100266	DRUCKVENTIL	PRESSURE VALVE		1,00 ST
2	34V002	1C2	27100418	WECHSELVENTIL	SHUTTLE VALVE		1,00 ST
3	34V003	1D3	27101458	DRUCKBEGRENZUNGSVENTIL	PRESSURE LIMITING VALVE		1,00 ST
4	34V004	1E4	27103844	RÜCKSCHLAGVENTIL	CHECK VALVE	RHD18L3BOMDCF	1,00 ST
5	34V005	1E2	27106981	WEGESITZVENTIL	DIRECTIONAL SEATED VALVE		1,00 ST
13	34V006	1B2	27104665	STROMREGELVENTIL	FLOW REGULATING VALVE		1,00 ST
14	34V007	1C3	27100118	WECHSELVENTIL	SHUTTLE VALVE	27100118	1,00 ST
6	34Z001	1F3	27400104	SCHRAUBKUPPLUNG STECKER	SCREW COUPLING PLUG	27400104	1,00 ST
7	34Z002	1F2	27300014	SCHRAUBKUPPLUNG MUFFE	SCREW COUPLING SOCKET	27300014	1,00 ST
8	34Z003	1F4	27400106	SCHRAUBKUPPLUNG STECKER	SCREW COUPLING PLUG	27400106	1,00 ST
9	34Z004	1F2	29901953	SCHUTZKAPPE	PROTECTIVE CAP	29901953	1,00 ST
10	34Z005	1F3	29901954	STAUBSCHUTZSTECKER	DUST PROTECTION PLUG	29901954	1,00 ST
11	34Z006	1F3	29900592	STAUBSCHUTZKAPPE	DUST PROTECTION CAP	29900592	1,00 ST
12	34Z007	1B2	40231936	SEILWINDE	CABLE WINCH		1,00 ST