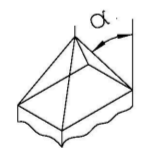


| Transportgewicht - transport weight | |
|--|-------------|
| max. gesamtes Transportgewicht: | 74kN = 7,4t |
| max. total transport weight: | |
| nur Aufdoppelmantel only Upsize shell | 69kN = 6,9t |

| Angaben zum Heben - Information for lifting | | | |
|---|--------------------------------------|---------------------------------------|---|
| Strang Cable | max. Kettenkraft max. chain force | min. Kettenlänge min. Chain length | max. Anschlagwinkel α max. angle α |
| 1.1 | 22kN = 2,2t | 2390mm | 29° |
| 1.2 | 22kN = 2,2t | 2390mm | 29° |
| 1.3 | 20kN = 2,0t | 2418mm | 30° |
| 1.4 | 20kN = 2,0t | 2418mm | 30° |



Angaben zum Verzurren - Information for lashing

Gemäß EN 12195-1 "Beschleunigungsbeiwerte, die auf Ladungen im Straßenverkehr wirken" berechnet. Calculated according to EN 12195-1 "Levels of acceleration, the transmitted on loadings in road traffic".

| Strang cable | max. Kettenkraft max. chain force | Zurrichtung Lashing direction | Zurzwinkel lashing angle | $\beta = 0-30^\circ$ $\gamma = 20-45^\circ$ |
|-----------------|--------------------------------------|----------------------------------|-----------------------------|--|
| 2.1 | 2093daN = 2,1t | | | Reibwert / friction: $\mu > 0,4$ |
| 2.2 | 2093daN = 2,1t | | | |
| 3.1 | 2093daN = 2,1t | | | |
| 3.2 | 2093daN = 2,1t | | | |

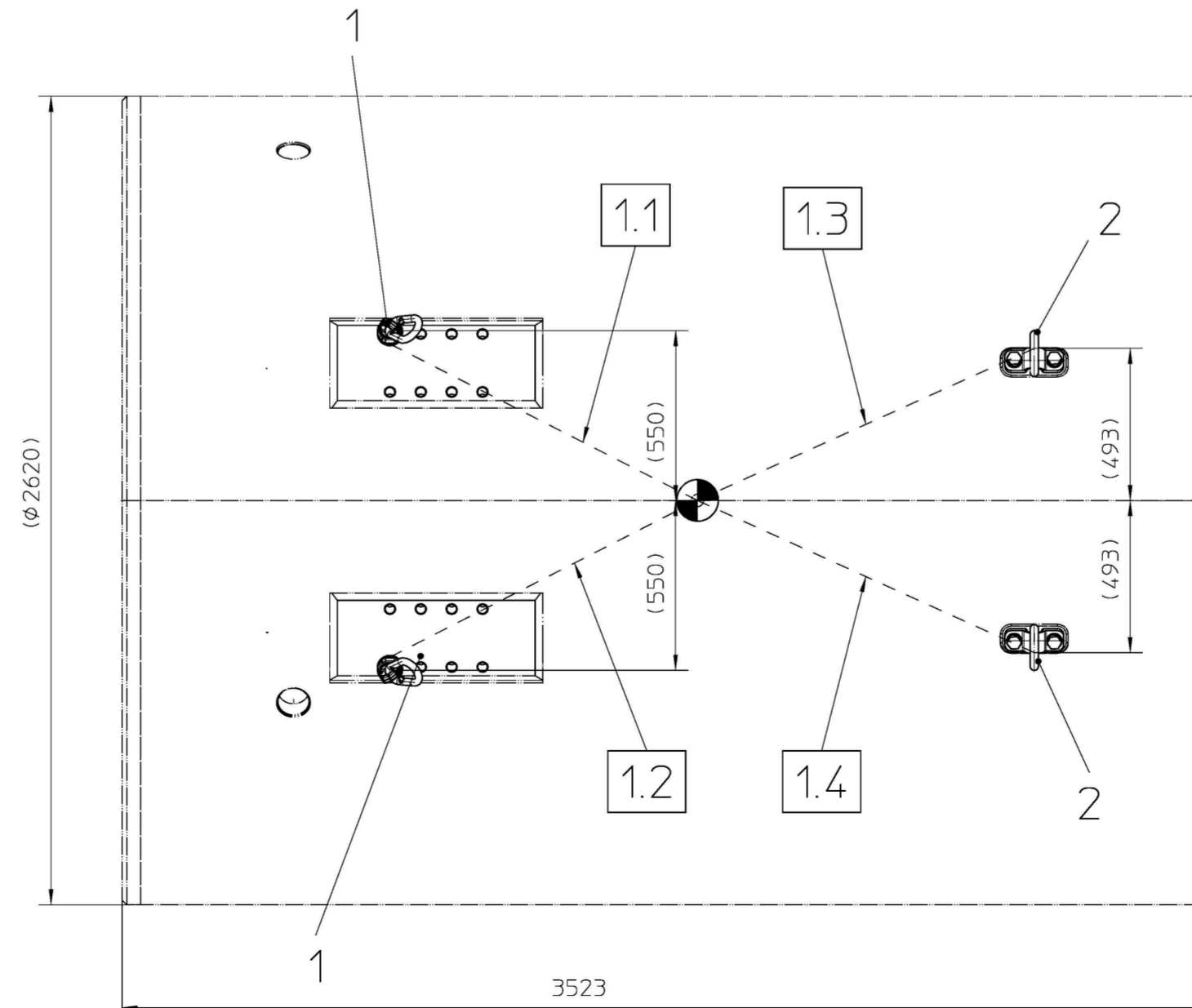
Bei Abweichungen von vorgegebenen Geometrie, Gewicht und bei Laständerungen ist die Rücksprache mit dem Hersteller erforderlich. Beim Heben sind größere Seillängen und kleinere Anschlagwinkel zulässig.

Alle Anschlag- und Zurrpunkte, sowie alle eingehängten Anschlag- und Zurrmittel dürfen sich weder an der Last, noch am Anschlagpunkt selbst abstützen!

Alle Angaben sind Gebrauchslasten = 1,0-fach (ohne Sicherheit)!
Deviations from the Geometry, weight and forces given need to be approved by the manufacturer.

All attachment and lashing points plus all hooked attachment and lashing accessories mustn't press on the load or the attachment point.

All forces are unfactored!



Schwerpunkt
center of gravity

| Pos. | Qty. | Designation 1 | Material | Partname | Material- number | Weight kg/pc. |
|------|------|---|----------------|-----------------|---------------------|------------------|
| 7 | 4 | WASHER ZP A25-140HV-DIN125 | St | | 24004809 | 0,03 |
| 6 | 4 | HEX.NUT ZP M24-8-DIN934 | | | 24007961 | 0,11 |
| 5 | 4 | HEX.SOCKET HEAD CAP SCREW ZP M24X90-8.8-DIN912 | | | 40518233 | 0,43 |
| 4 | 2 | TRANSPORT DEVICE MR2 TK2135 | 3759-08-006-51 | | 30246902 | 17,5 |
| 3 | 2 | LIFTING POINT TRANSPORT RING 5300KG-NG1378-TWN0119 | TWN | | 29500539 | 1,9 |
| 2 | 2 | LIFTING POINT 8000KG-10-170.1 | | | 29900016 | 3,32 |
| 1 | 2 | LIFTING POINT SWIVEL BRACKET TP10-M36X50-15000/10000KG | | | 29914309 | 3,76 |
| | | Designation 2 | Drawing no. | Material proper | Dimension | |

| Revision | Change | Date | Drawn | Date | Released |
|----------|--------------------|------------|---------|------------|----------|
| A | Pos.1 war 29502633 | 21.07.2022 | hurstik | 21.07.2022 | mannherz |

The reproduction, distribution and utilization of this document as well as the communication of its contents to others without express authorization is prohibited. Offenders will be held liable for the payment of damages. All rights reserved in the event of the grant of a patent, utility model or design. ISO 16016

| | | | |
|-------------------------------------|------------------------|--------------|-------------|
| Edges of undefined shape | ISO 13715:2000 | Drawing type | assembly |
| Geometrical product specification | (GPS) EN ISO 1101:2013 | Project | M-722M |
| Surface specifications according to | EN ISO 1302:1992 | Machine type | EPB2000T-01 |



TRANSPORT SITUATION
TRANSPORTSITUATION
AD-MR1-L3523XB2620XH2620-7,3T

| Date | Name | Sheet | Revision | Format |
|------------|------------------|-------|--------------|-----------|
| 12.04.2022 | Papst, Yannis | 1/1 | A | A2 |
| 12.04.2022 | Mannherz, Daniel | Scale | Material no. | Material |
| | | 1:20 | 40628251 | Weight/kg |

Baukastenstückliste modular BOM



Projekt
Material 40628251
Bezeichnung 1 TRANSPORTSITUATION

Zchnng.Nr/ver 1187-08.1-005-90 / A
Gewicht 490 KG
Werk 1000

project
material 40628251
description 1 TRANSPORT SITUATION

draw.No/ver 1187-08.1-005-90 / A
weight 490 KG
plant

| Pos. | Typ type | Material | Menge qty | Bezeichnung 1 / Bezeichnung 2 | description 1 / description 2 | Zchnng.Nr/ver/Bpf draw.No/ver | Gewicht weight |
|------|-------------|----------|--------------|---|---|----------------------------------|-------------------|
| 1 | L | 29914309 | 2,000 ST | ANSCHLAGPUNKT WIRBELBOCK | LIFTING POINT SWIVEL BRACKET | | 3,76 KG |
| 2 | Z | 29900016 | 2,000 ST | ANSCHLAGPUNKT | LIFTING POINT | | 3,32 KG |
| 3 | L | 29500539 | 2,000 ST | ANSCHLAGPUNKT TRANSPORTRING | LIFTING POINT TRANSPORT RING | | 1,90 KG |
| 4 | L | 30246902 | 2,000 ST | TRANSPORTVORRICHTUNG | TRANSPORT DEVICE | 3759-08-006-51/- | 17,50 KG |
| 5 | L | 40518233 | 4,000 ST | ZYLINDERSCHRAUBE GVZ M24X90-8.8-DIN912 | HEX.SOCKET HEAD CAP SCREW ZP M24X90-8.8-DIN912 | | 0,43 KG |
| 6 | L | 24007961 | 4,000 ST | SECHSKANTMUTTER GVZ M24-8-DIN934 | HEX.NUT ZP M24-8-DIN934 | | 0,11 KG |
| 7 | L | 24004809 | 4,000 ST | SCHEIBE GVZ A25-140HV-DIN125 | WASHER ZP A25-140HV-DIN125 | | 32,30 G |

* Z = Infoteil
* Z = reference part