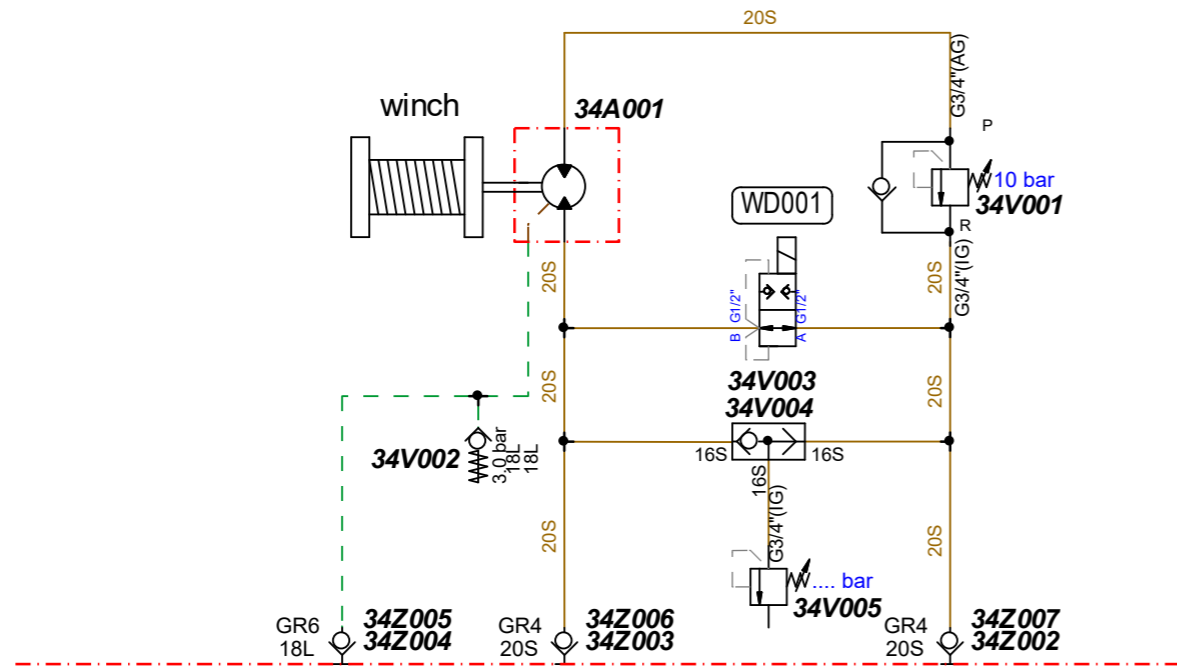


+1.3939  
Standard



winch Mat.-Nr.:	34V005 Einstellwert
4037 8784	180 bar
4023 1943	400 bar
4023 1942	400 bar
4023 1941	400 bar
4023 1940	400 bar
4023 1937	370 bar
4023 1936	370 bar
4023 1935	370 bar
4023 1934	370 bar
4023 1931	180 bar
4023 1930	180 bar
4023 1929	180 bar
4023 1927	180 bar
4023 1926	200 bar
4023 1924	200 bar
4023 1923	200 bar
4023 1922	200 bar
4023 1915	400 bar
4023 1911	400 bar
4023 1908	175 bar
4023 1899	175 bar
4022 1183	130/160 bar
2510 2201	200 bar
2510 2206	130/160 bar

fehlende Winden, siehe Konstruktionszeichnungen

approved for manufacturing  
subject to modifications

checker: SCHWENDS

Date: 13.11.2018

G	Tabelle Winde Mat.-Nr. ergänzt (1A6)	13.11.2018	FLITTNEK	13.11.2018	SCHWENDS
F	Tabelle Winde Mat.-Nr. geändert (1A6)	16.11.2016	JUNGHANM	30.11.2016	METZGER
E	Tabelle ergänzt (1D6)	05.10.2016	JUNGHANM	06.10.2016	HEIZMANN
Index	Revision	Date	Editor	Date	Ch. by

The reproduction, distribution and utilization of this document as well as the communication of the contents to others without express authorization is prohibited. Offenders will be held liable for the payment of damages. All rights reserved in the event of a patent, utility model or design. ISO 16016

HERRENKNECHT AG Schlehenweg 2 D-77963 Schwanau Tel.: 07824/302-0 Fax: 07824/3403 Info@Herrenknecht.de			Type of drawing schematic	Project AVN_Standard_3939	Material
			Name HYDRAULIKSCHEMA WINDE 20S (SCHACHT- OHNE BREMSE)		
Edited	Date	Name	Draw ing no. 3939-45-056-00	Page no. 1 / 1	Index G
Checked	13.11.2018	FLITTNEK	Norm	Article number 40113471	Developed from
approved	13.11.2018	SCHWENDS		Weight/kg	Format A3

09.09.2022  
[Structure]

## Strukturstückliste Modular parts list



Projekt  
Teilenummer 40113471  
HYDRAULIKSCHEMA WINDE  
Zeichnungsnr. 3939-45-056-00 G

Project  
Part number 40113471  
HYDRAULIC DIAGRAM WINCH  
Drawing no. 3939-45-056-00 G

Item	Operating resources structure	Document path	Material number	description	Designation	Drawing no.	Quantity
5	34A001	1B3					1,00 ST
7	34V001	1B4	27100826	DRUCKVENTIL	PRESSURE VALVE		1,00 ST
11	34V002	1C3	27103844	RÜCKSCHLAGVENTIL	CHECK VALVE	RHD18L3BOMDCF	1,00 ST
12	34V003	1B3	27106981	WEGESITZVENTIL	DIRECTIONAL SEATED VALVE		1,00 ST
13	34V004	1C4	27100418	WECHSELVENTIL	SHUTTLE VALVE		1,00 ST
14	34V005	1C3	27101458	DRUCKBEGRENZUNGSVENTIL	PRESSURE LIMITING VALVE		1,00 ST
6	34Z001	1B3					1,00 ST
8	34Z002	1C4	27400104	SCHRAUBKUPPLUNG STECKER	SCREW COUPLING PLUG	27400104	1,00 ST
9	34Z003	1C3	27300014	SCHRAUBKUPPLUNG MUFFE	SCREW COUPLING SOCKET	27300014	1,00 ST
10	34Z004	1C2	27400106	SCHRAUBKUPPLUNG STECKER	SCREW COUPLING PLUG	27400106	1,00 ST
15	34Z005	1C2	29900592	STAUBSCHUTZKAPPE	DUST PROTECTION CAP	29900592	1,00 ST
16	34Z006	1C3	29901953	SCHUTZKAPPE	PROTECTIVE CAP	29901953	1,00 ST
17	34Z007	1C4	29901954	STAUBSCHUTZSTECKER	DUST PROTECTION PLUG	29901954	1,00 ST