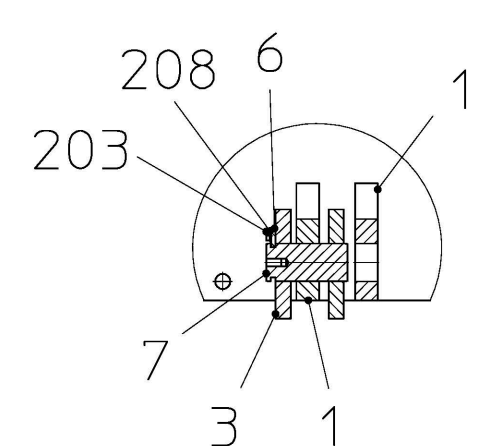
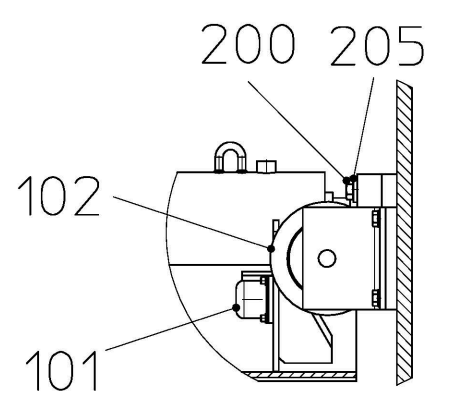


A-A 1:20



B-B 1:20




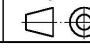
Pos.300 | Hydraulikschemata | Art.Nr:40057457

max. Druckkraft Pressenrahmen bei 500 bar max. force jacking station at 500 bar	12000kN
--	---------

techn. Daten Hydraulikzylinder hydraulic cylinder specifications	
Anzahl quantity	4
Kolben- ϕ piston- ϕ	290mm
Stangen- ϕ rod- ϕ	170mm
Hub stroke	3500mm

Wenn nicht anderweitig angegeben, sind metrische Schraubenschrauben entsprechend den HERRENKNECHT-Anweisungen nach folgender Tabelle anzuziehen
Screw tightening torques in Nm following A-MBQ002, A-GW002, A-FS003 and A-MT005
coefficient of friction $\mu_{ges.} = 0,12$

	5.6	8.8	10.9	12.9
M12	35	75	110	130
M16	85	180	265	310
M24	285	630	890	1050
M30	570	1250	1800	2100

A Pos.300 hinzugefügt		28.08.2022	hursik	28.08.2022	mannherd
Revision	Change	Date	Drawn	Date	Released
The reproduction, distribution and utilization of this document as well as the communication of its contents to others without express authorization is prohibited. Offenders will be held liable for the payment of damages. All rights reserved in the event of the grant of a patent, utility model or design. ISO 16016		General tolerances			
Edges of undefined shape	ISO 13715:2000	Drawing type		assembly	
Geometrical product specification (GPS)	EN ISO 1101:2013	Project		STANDARD-AVN	
Surface specifications according to	EN ISO 1302:1992	Machine type			
 www.herrenknecht.com		Name		JACKING FRAME PRESSENRAHMEN DA2450-2800	
		Drawing number		809-52-178-00	
Date	Name	Sheet	Revision	Format	
03.05.2022	Schrötlin, Viktoria	1/1	A	A2	
Released	03.05.2022	Steiner, Thomas	Scale	Material no.	Material
	1:30	40625254	Weight/kg	17908	
		Projection			

Baukastenstückliste modular BOM



Projekt
Material 40625254
Bezeichnung 1 PRESSENRAHMEN

Zchnng.Nr/ver 809-52-178-00 / -
Gewicht 17.908 KG
Werk 1000

project
material 40625254
description 1 JACKING FRAME

draw.No/ver 809-52-178-00 / -
weight 17.908 KG
plant

Pos.	Typ type	Material	Menge qty	Bezeichnung 1 / Bezeichnung 2	description 1 / description 2	Zchnng.Nr/ver/Bpf draw.No/ver	Gewicht weight
1	L	40631607	1,000 ST	WIDERLAGERPLATTE	ABUTMENT PLATE	809-52-178-02/-	2.975,00 KG
2	L	40625730	1,000 ST	HAUPTPRESSRING	MAIN THRUST RING	809-52-178-01/A	3.269,00 KG
3	L	30066276	1,000 ST	FÜHRUNGSRAHMENHÄLFTE	GUIDE FRAME HALF	809-52-051-02/C	1.680,00 KG
4	L	30066220	1,000 ST	FÜHRUNGSRAHMENHÄLFTE	GUIDE FRAME HALF	809-52-051-01/C	1.680,00 KG
5	L	40630138	1,000 ST	FÜHRUNGSRAHMENVERLÄNGERUNG	GUIDE FRAME EXTENSION	809-52-178-25/-	767,00 KG
6	L	25601036	2,000 ST	SICHERUNGSBLECH	LOCKING PLATE	118-00-103-09/-	0,70 KG
7	L	25611498	2,000 ST	BOLZEN	BOLT		13,06 KG
8	L	40630057	1,000 ST	ÜBERFAHRBLECH STAHLBAU	DRIVE-OVER SHEET STEEL STRUCT.	809-52-178-15/-	695,00 KG
9	Z	40450942	1,000 ST	SEILWINDE ZUSAMMENBAU	CABLE WINCH ASSEMBLY	809-75-002-00/-	330,00 KG
10	Z	30038217	1,000 ST	AUFHÄNGUNG	SUSPENSION	809-52-036-12/B	263,00 KG
11	Z	25640199	2,000 ST	HALTERUNG	FIXING DEVICE	497-04-001-05/B	3,11 KG
100	Z	20000820	4,000 ST	TELESKOPZYLINDER	TELESCOPIC CYLINDER		1.522,00 KG
101	L	29350693	2,000 ST	GUMMIPUFFER	RUBBER BUFFER		1,82 KG
102	L	23301533	1,000 ST	ROLLENBOCK	IDLER BRACKET		44,00 KG
200	L	24005607	32,000 ST	SECHSKANTSCHRAUBE M.SCHAFT GVZ M30X110-8.8-DIN931	HEX.HEAD BOLT ZP M30X110-8.8-DIN931		0,82 KG
201	L	24002035	38,000 ST	SECHSKANTSCHRAUBE M.SCHAFT GVZ M24X80-8.8-DIN931	HEX.HEAD BOLT ZP M24X80-8.8-DIN931		0,39 KG
202	L	24004226	4,000 ST	SECHSKANTSCHRAUBE GVZ M24X40-8.8-DIN933	HEX.HEAD SCREW ZP M24X40-8.8-DIN933		0,24 KG
203	L	24007760	4,000 ST	SECHSKANTSCHRAUBE M.SCHAFT GVZ M16X55-8.8-DIN931	HEX.HEAD BOLT ZP M16X55-8.8-DIN931		0,12 KG
204	L	24007961	42,000 ST	SECHSKANTMUTTER GVZ M24-8-DIN934	HEX.NUT ZP M24-8-DIN934		0,11 KG
205	L	24003076	32,000 ST	SCHEIBE 31-ST-DIN7349	WASHER 31-ST-DIN7349		0,23 KG
206	L	24000211	8,000 ST	SCHEIBE GVZ A13-140HV-DIN125	WASHER ZP A13-140HV-DIN125		6,00 G

* Z = Infoteil
* Z = reference part

Baukastenstückliste modular BOM

Projekt
Material 40625254
Bezeichnung 1 PRESSENRAHMEN
description 1 JACKING FRAME

Pos.	Typ type	Material	Menge qty	Bezeichnung 1 / Bezeichnung 2	description 1 / description 2	Zchnng.Nr/ver/Bpf draw.No/ver	Gewicht weight
207	L	24004809	84,000 ST	SCHEIBE GVZ A25-140HV-DIN125	WASHER ZP A25-140HV-DIN125		32,30 G
208	L	24001372	4,000 ST	SCHEIBE GVZ A17-140HV-DIN125	WASHER ZP A17-140HV-DIN125		11,30 G
209	L	24007726	8,000 ST	ZYLINDERSCHRAUBE GVZ M12X20-8.8-DIN912	HEX.SOCKET HEAD CAP SCREW ZP M12X20-8.8-DIN912		0,03 KG
210	L	24900322	1,000 ST	FEDERSTECKER GVZ	SPRING COTTER ZP		134,00 G
300	L	40057457	1,000 ST	HYDRAULIKSCHEMA PRESSENRAHMEN	HYDR.DIAGRAM JACKING FRAME	3939-45-070-52/A	0,00 KG