

Hardworking Hyundai Loaders



Wheel Loaders **HL757-7**

Engines

- Electronic Engine Control System
- Engine Protection & Self diagnosis System
- Max. Power 118 HP

Transmission

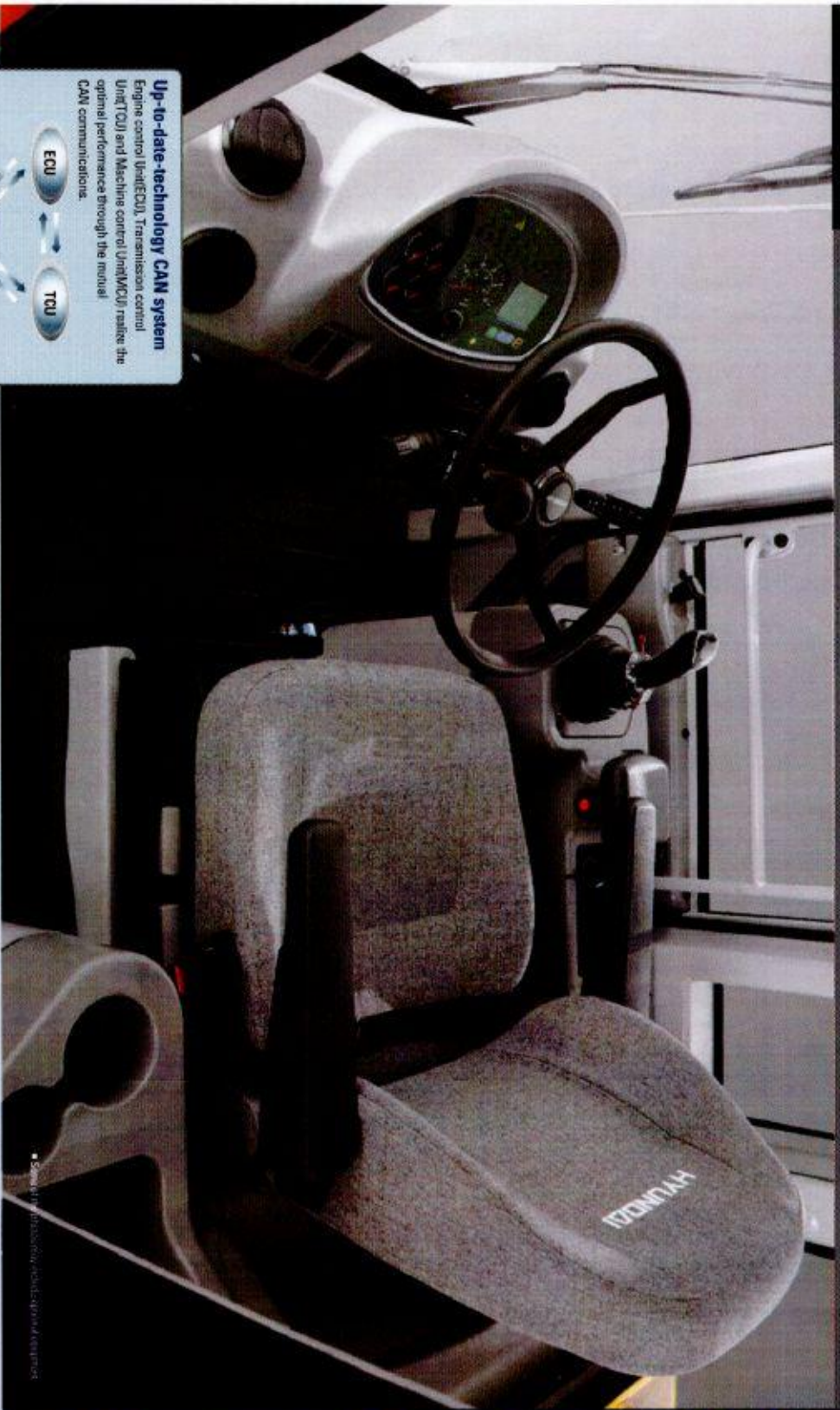
- 2 Automatic Selection Mode
- 2 Kick Down Function Mode
- AEB Function

AXLES

- Limited Slip Differential
- Self-Adjusting & Wheel Speed Brake
- Improved Oil Circuit & Lubrication

Control Center

The hi-new, deluxe operating space was engineered with 3-D modeling for your ultimate control center. The wide, tinted and laminated front windshield has no framing cutting through to ensure excellent visibility.



The Centralized Display & Switch Panel

The centralized digital display shows the status and conditions of your machine at a glance.



Joystick Control Lever

Two joystick switches located on top of the hoodler control lever and the gear shifting lever allow the operator to change instantly to 1st stage lower gear, in order to drive at full power into the material.



The Air Conditioning and Heating System

The operator can easily control the temperature and air flow. The defroster on the front windshield and rear window makes it convenient for winter working usage.



Up-to-date-technology CAN system



Adjustable steering column



Full automatic shift lever

A single lever on the left side of the steering column gives the operator fast, easy control of speed and direction. Push the lever forward to go forward, pull it back for reverse. Traveling is automatically changed from 1st stage to given stage according to travel speed and tractive effort. The operator can select two kinds of automatic modes (1st → 4th, 2nd → 4th). This exclusive feature contributes to a improvement in productivity and reduction of operator's fatigue.

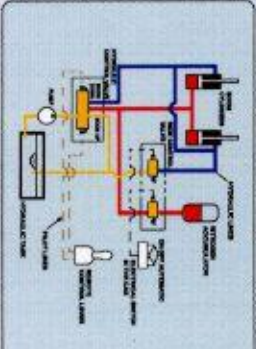


Ride control system (optional)

The ride control system is available for smooth traveling as an option. It significantly reduces machine bouncings and absorbs the shocks in the machine, enhancing the productivity of the machine. This system reduces the fatigue of the driver as well as the stress on the structures and components.

The system consists of accumulators in the hydraulic lift circuit, hydraulic control valve and solenoid switch.

- Off position: Function is cancelled
- On position: Function is available
- Auto position: Function is available when the machine travels above 9.5km/h (6mph). If the machine travels under 8 km/h (5.0mph), the function is cancelled automatically.



A Well Rounded System



Up-to-class hydraulic remote control lever

300cc/min load capacity and 10000 psi maxed by optional hydraulic control. In this mode, 300cc/min proportional valve for remote operation, hydraulic and electric response.



Engine

The Case IH 417571 engine combines full authority electronic controls with the reliable performance. The combination of improved airflow and evenly dispersed fuel results in increased power, improved transient response and reduced fuel consumption. And the Case IH 417571 advanced electronics contribute to meet the emission standards (EPA Tier II, EU Stage II).



Multi Function Transmission

The newly developed transmission control represents the beating heart of transmission. The hydraulic system for gears, which allow a very precise control of the clutches. For each gear change, the control unit performs a rotating function to ensure that the specific shift curve is adhered, and redistributes the shift pressure applied to the clutches without machine interruption. This helps to avoid stalling of the vehicle, sudden load changes and torque peaks under all conditions, for example, application on steep terrain with full load. In addition, there is an option for the driver to make gearshifts manually.



Improved Axle

Limited slip Differential in standard equipment allows easy driving on variable ground conditions. Self adjusting brake which require the disc clearance automatically can maintain optimum brake performance. Due to improved internal oil circuit, the durability of axle is increased.



Bucket cylinder guard

This guard helps to prevent possible damages from the load material.



High-rigidity frames

Front and rear frames are designed for work in the toughest applications to provide high rigidity for the power train and loader equipment. The high-rigidity frames, together with the reinforced loader linkage, resist loading stress and shock.



Battery master switch

A master switch disconnects the battery power to protect the electrical system from excessive electrical drainage.



Chromium - Plated PIN is applied

With the application of Chromium Plated PIN, durability and precision are improved and the life cycle became longer.



Sealed loader linkage

Fully precision fitting and the sealed loader linkage with dust seals and e-ring will extend lubrication intervals remarkably.

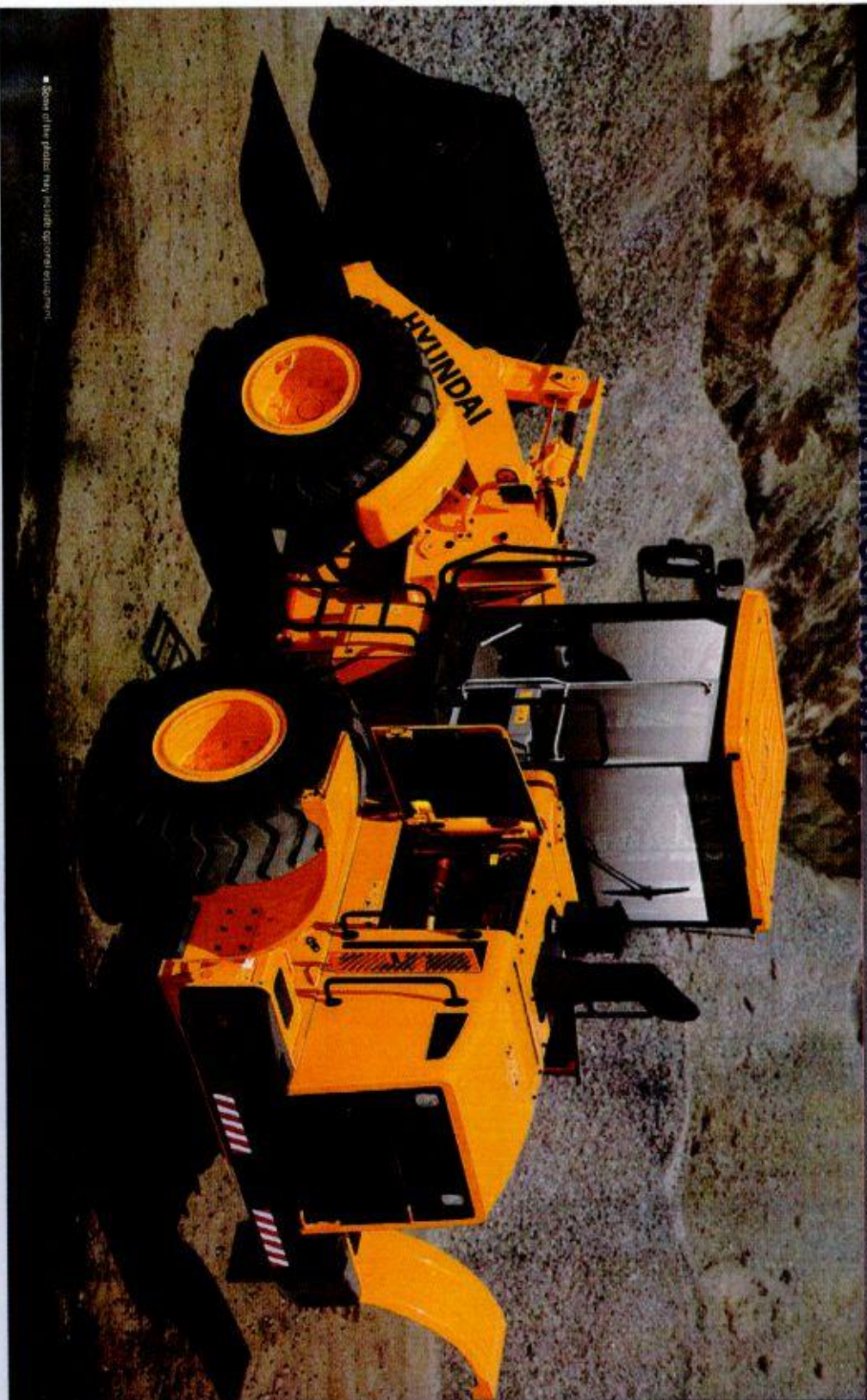


Frame lock

The machine can be locked by this locking bar to prevent movement during transportation.



Accessible and Serviceable



• Some of the photos may include optional equipment.



Easy Access to All Engine Accessory

Here you find the engine oil check, and the main and pre-filters. The large access engine side panels allows easy and safe inspections. The fuel filter can be spun on and off for quick replacements.



Cabin Air Fresh Filter

The internal pressure is maintained to be a slightly higher than outside to exclude dust and to reduce noise level.



Remote type drain port

It is now easier to change your engine oil, coolant and hydraulic oil with the remote drain port.



Coolant Sight Gauge

The coolant sight gauge is installed on the radiator top tank for convenient checks of coolant level.



Accessible grease fittings

Grease fittings are highlighted and available around the machine for fast access when conducting your service checks.



Simple air filter replacement

The air cleaner is easily replaceable by turning the wing nut on the outer shell counter-clockwise.



Central electric controllers & Fuse box

Electric controllers for Hyundai loader are centralized to improve serviceability. A concentrated fuse box for easy inspection.



Hydraulic tank

The hydraulic tank is located behind the cab to increase the accessibility of hydraulic hoses and pipes.



Open pin access

You can more easily remove or tighten your front attachment pin with these open connectors surrounding the pin.



Oil sight gauge

The hydraulic oil check sight gauge is installed on the side of the hydraulic tank for convenient check from ground level.



Transmission oil port

The transmission oil change port is also located for easy accessibility and comes with an anti-vandalism lock for your machine protection.

