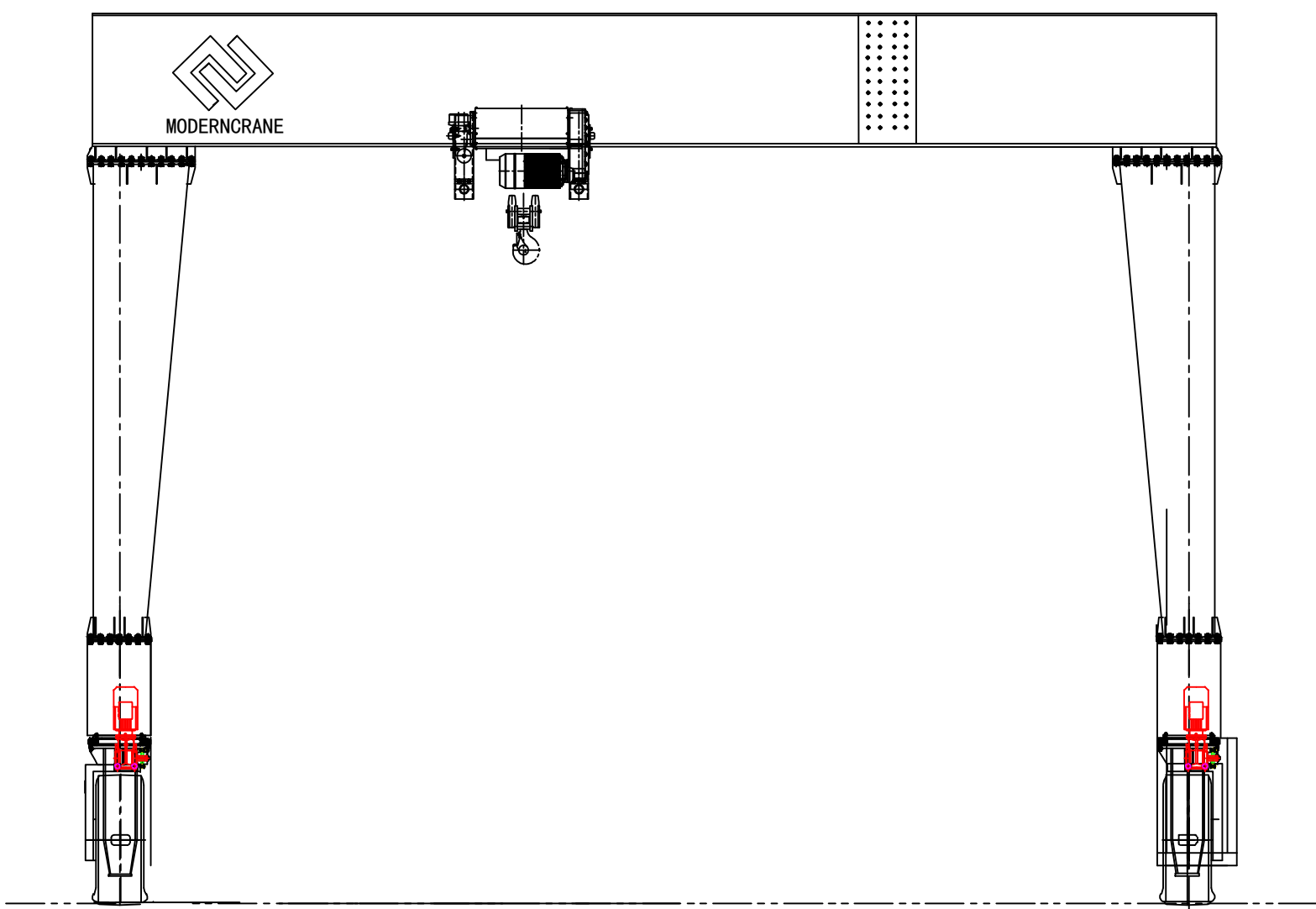
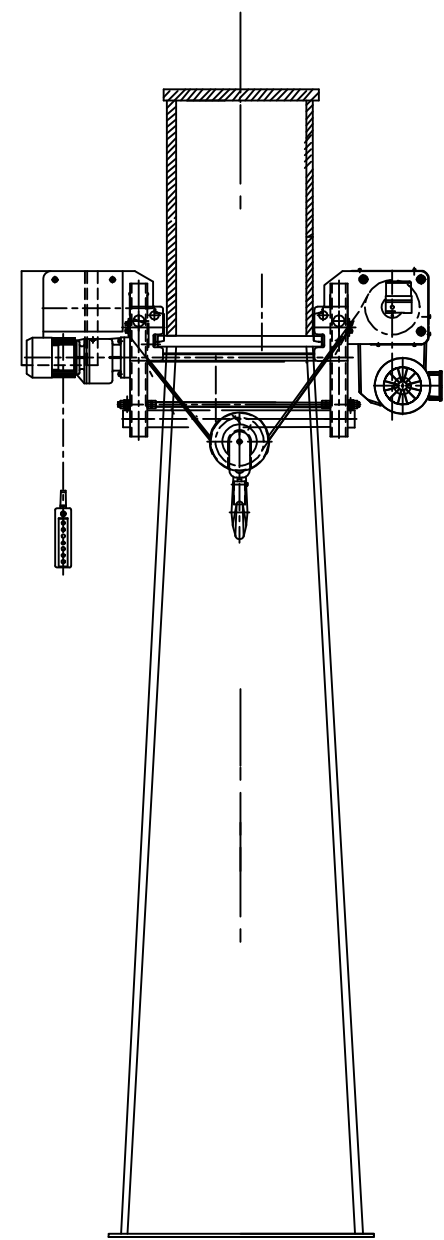


第六步：将组装起来的主梁和支腿与地梁连接。  
Assemble the ground beam with the leg and main beam with bolt

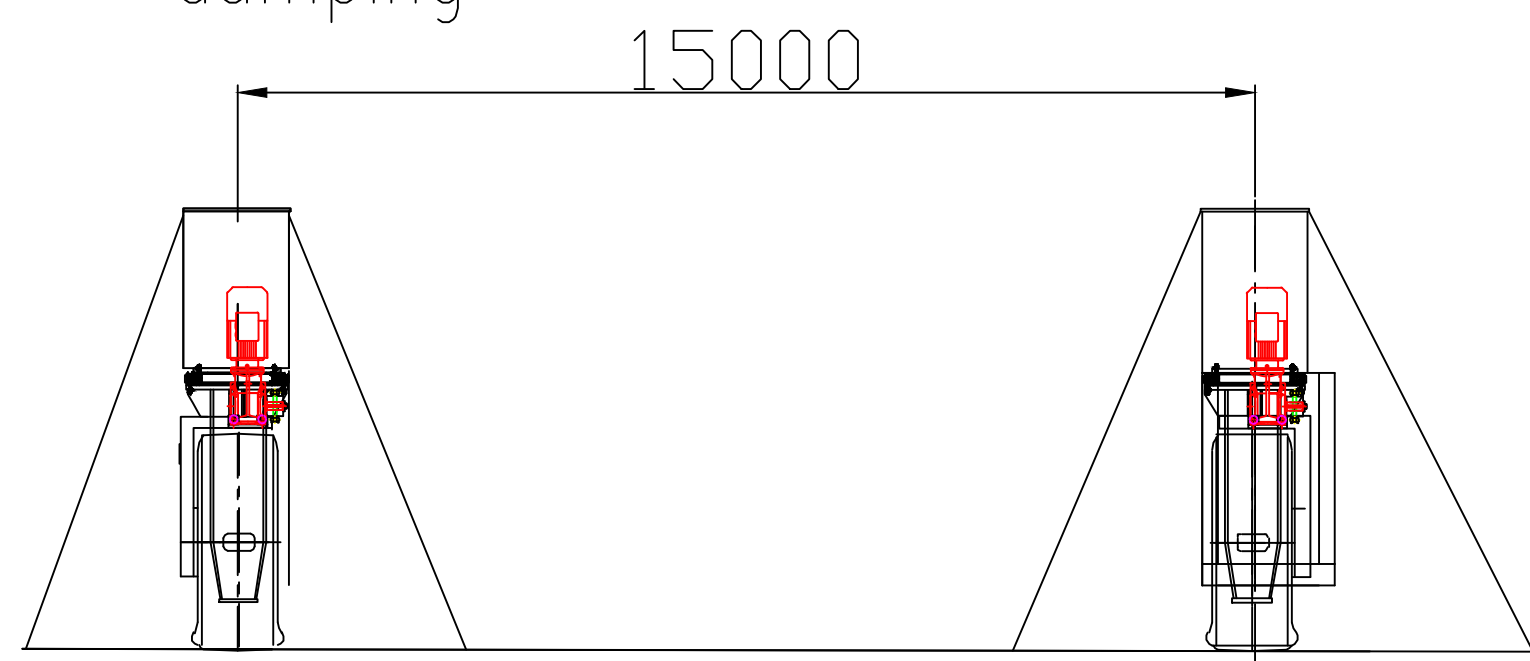


第七步：安装发电机组，安装电路和油路。  
Install the generator set and install electric and oil system

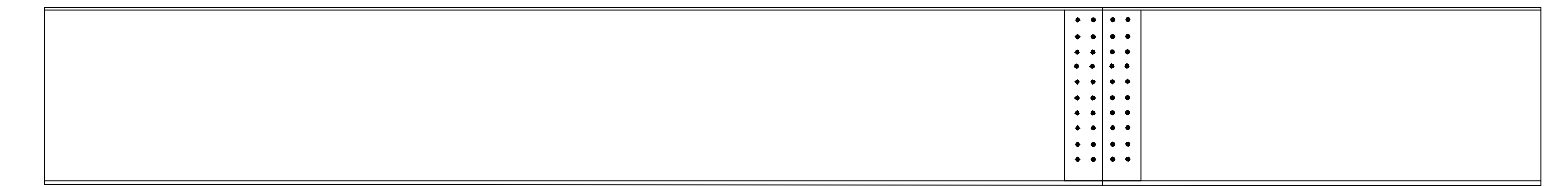
第四步：将主梁和支腿立起来。  
Stand up the leg and the main beam



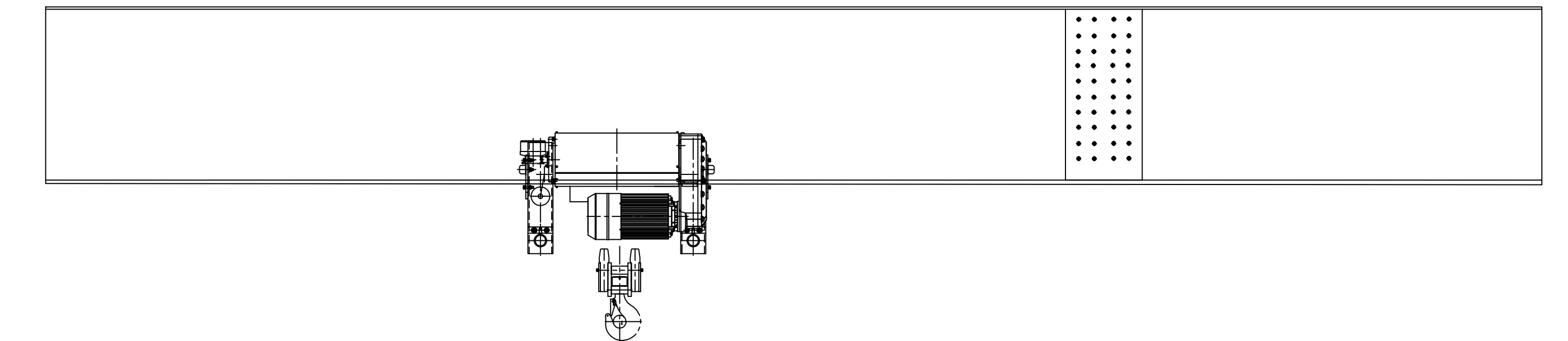
第五步：将地梁立起来并加固。  
Stand up the ground beam, And reinforce support to prevent dumping



第一步：主梁用螺栓连接，然后焊接。  
Main beam bolt connection, than welding



第二步：安装电动葫芦。  
Install electric hoist.



第三步：支腿与主梁的连接。  
Connecting the leg and the main beam with the bolt.

