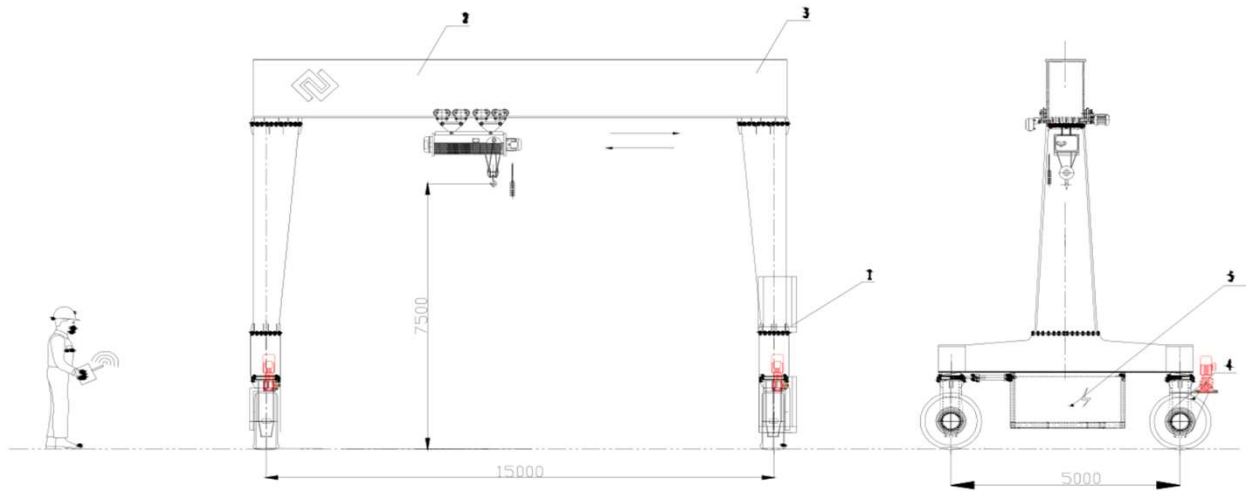


Gantry Crane



Main Parameter		Unit
Hoist System		
Lifting capacity	20	ton
Lifting speed	3.5	m/min
Rope diameter	22	mm
Working system	M3	
Lifting height	7.5	m
Ground pressure	3	kg/cm ²
Operation slope	1	%
Travelling System:		
Span	15000	mm
Travelling speed	0-20	m/min
Working system	M4	
Base distance	5000	mm
Steering mode	hydraulic	
Driving mode	Reducer	
Others		
Wheel steer	4 wheel steer	
European standard winch	With 2 wires	
Operate mode	Cabin / remote control	