



KLEEMANN

Hydraulikplan Hydraulic diagram

MCO 11/11i Pro

K110 / K111
Baureihe /
Series

0001 - 9999
Seriennummer /
Serial No

23.05.2016
Ausgabedatum /
Date of issue

(Blattkopfeinträge für ganzen Plan bei Baureihen / Individualoptionen)

Drawing by:	
date	18.05.2016
name	R. Edel

Valid for Serial No.:	
from	to

2531745_02
Katalog Bestellnummer /
Catalogue order No

Schutzvermerk nach ISO 16016

Weitergabe sowie Vervielfältigung dieses Dokuments, Verwertung und Mitteilung seines Inhalts sind verboten, soweit nicht ausdrücklich gestattet.

Zu widerhandlungen verpflichten zum Schadenersatz. Alle Rechte für den Fall der Patent-, Gebrauchsmuster- oder Geschmacksmustereintragung vorbehalten.

Protection Notice ISO 16016

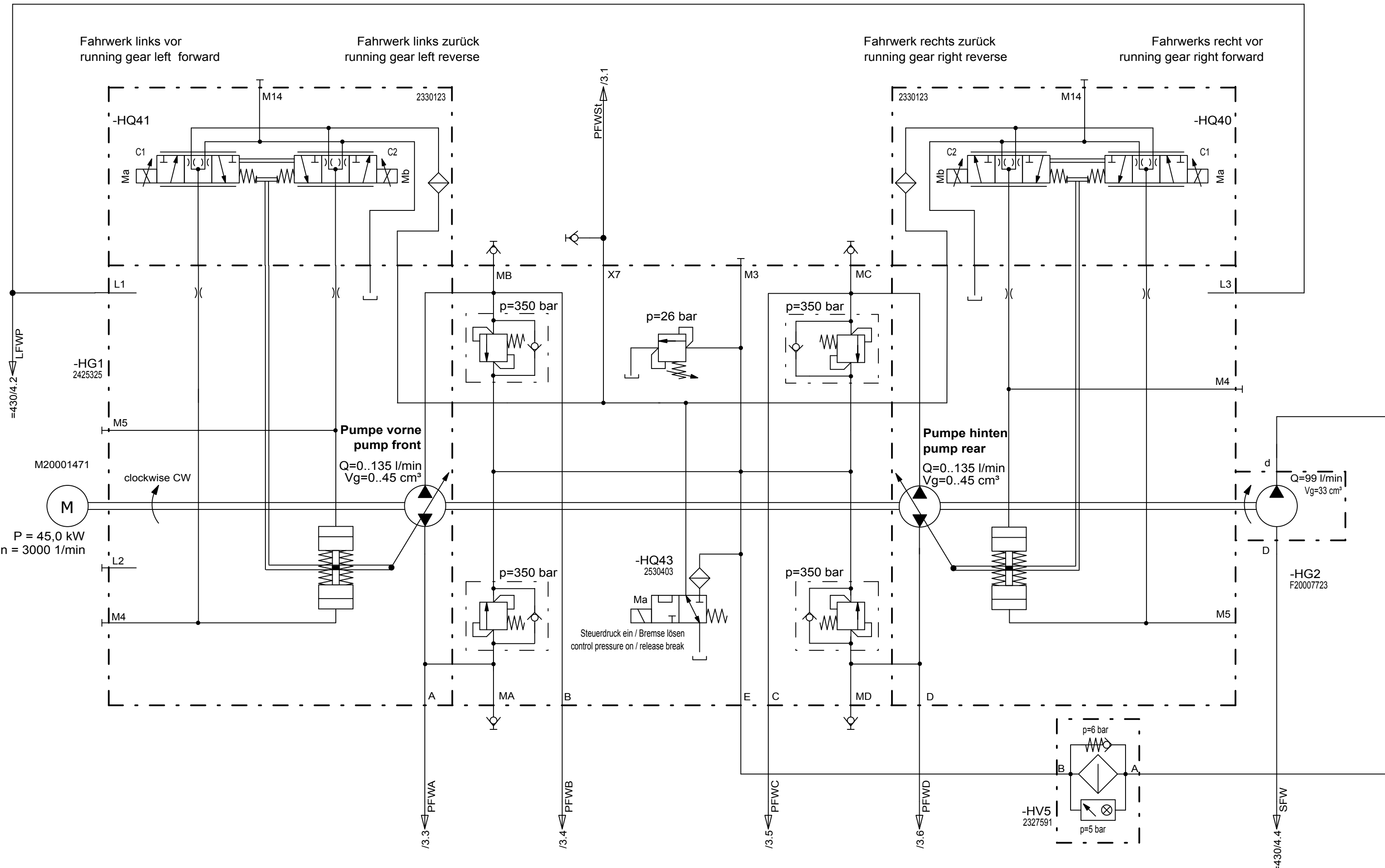
The reproduction, distribution and utilization of this document as well as the communication of its contents to others without explicit authorization is prohibited.

Offenders will be held liable for the payment of damages. All rights reserved in the event of the grant of a patent, utility model or design.

Hydraulics

Schutzvermerk nach ISO 16016 beachten

Refer to protection notice ISO 16016



Drawing by:		Approved by:		last change:		Status:	
date	18.05.2016	date		date	22.08.2016	AE =changable	
name	R. Edel	name		name	R. Edel	PF = prototype release	
E - CAE		Document type:		Function group No.:		SF = serial release	
		HFP					

SF	Document No.:
	Partial Document No.:
	Version No.:

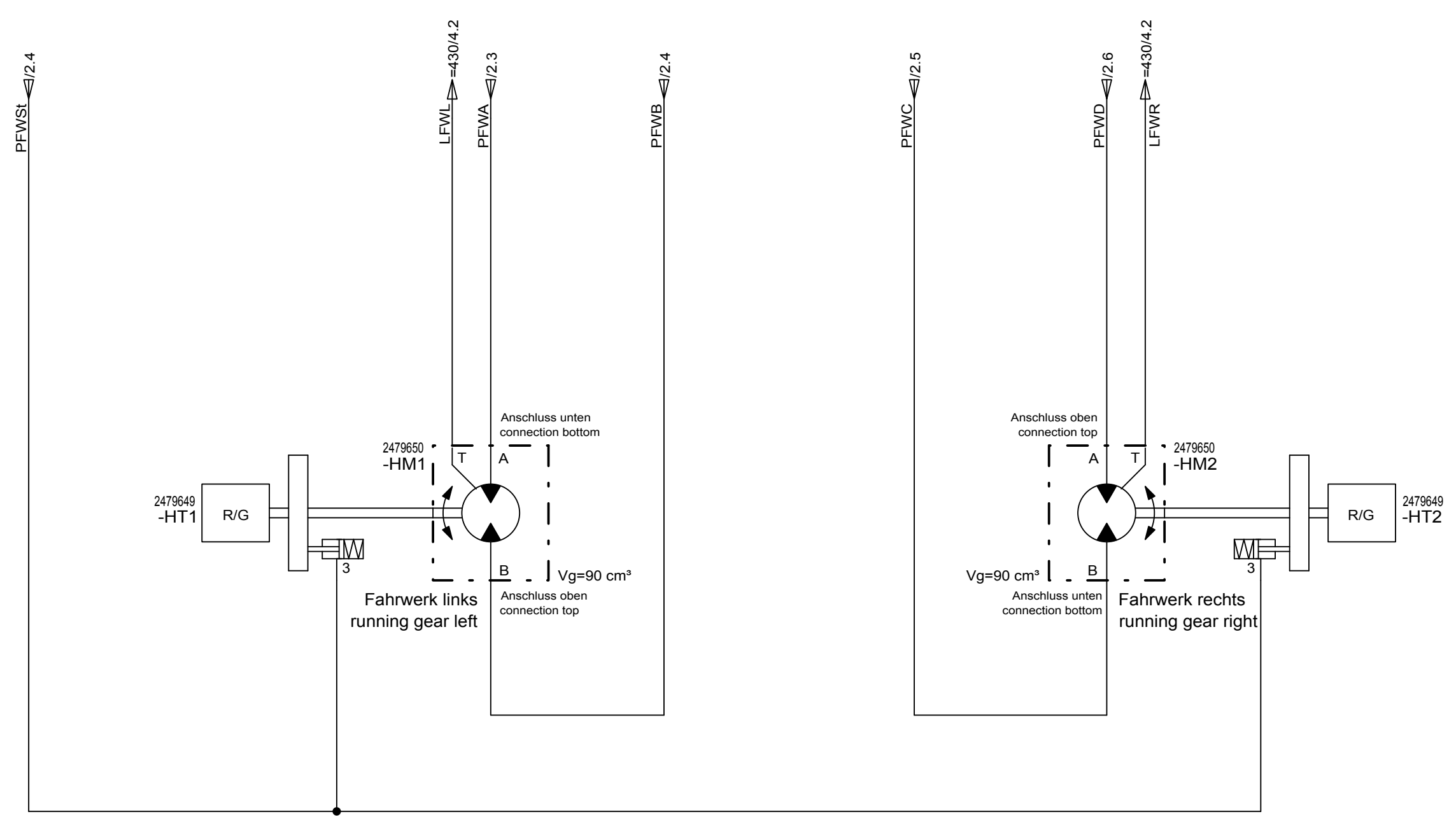
KLEEMANN	
Material No.:	Revision No.:
2531745	02
Series code:	Valid for Serial No.:
K110 / K111	from 0001 to 9999
Sheet plant:	Sheet Location:
=520	+M

Pumpen Fahrtrieb pumps drive system	
Sheet:	2
of	14

Hydraulics

Schutzvermerk nach ISO 16016 beachten

Refer to protection notice ISO 16016



Drawing by:		Approved by:		last change:	
date	18.05.2016	date		date	22.08.2016
name	R. Edel	name		name	R. Edel
E - CAE		Document type:		Function group No.:	
		HFP			

Status:
SF AE =changable
 PF = prototype release
 SF = serial release

Document No.:
 Partial Document No.:
 Version No.: 05



Material No.: **2531745** Revision No.: **02**
 Series code: **K110 / K111** Valid for Serial No.: from **0001** to **9999**
 Sheet plant: =520
 Sheet Location: +M

**Motoren Fahrtrieb
 motors drive system**

Sheet: **3**
 of **14** Sheets

© 2016 by Kleemann GmbH

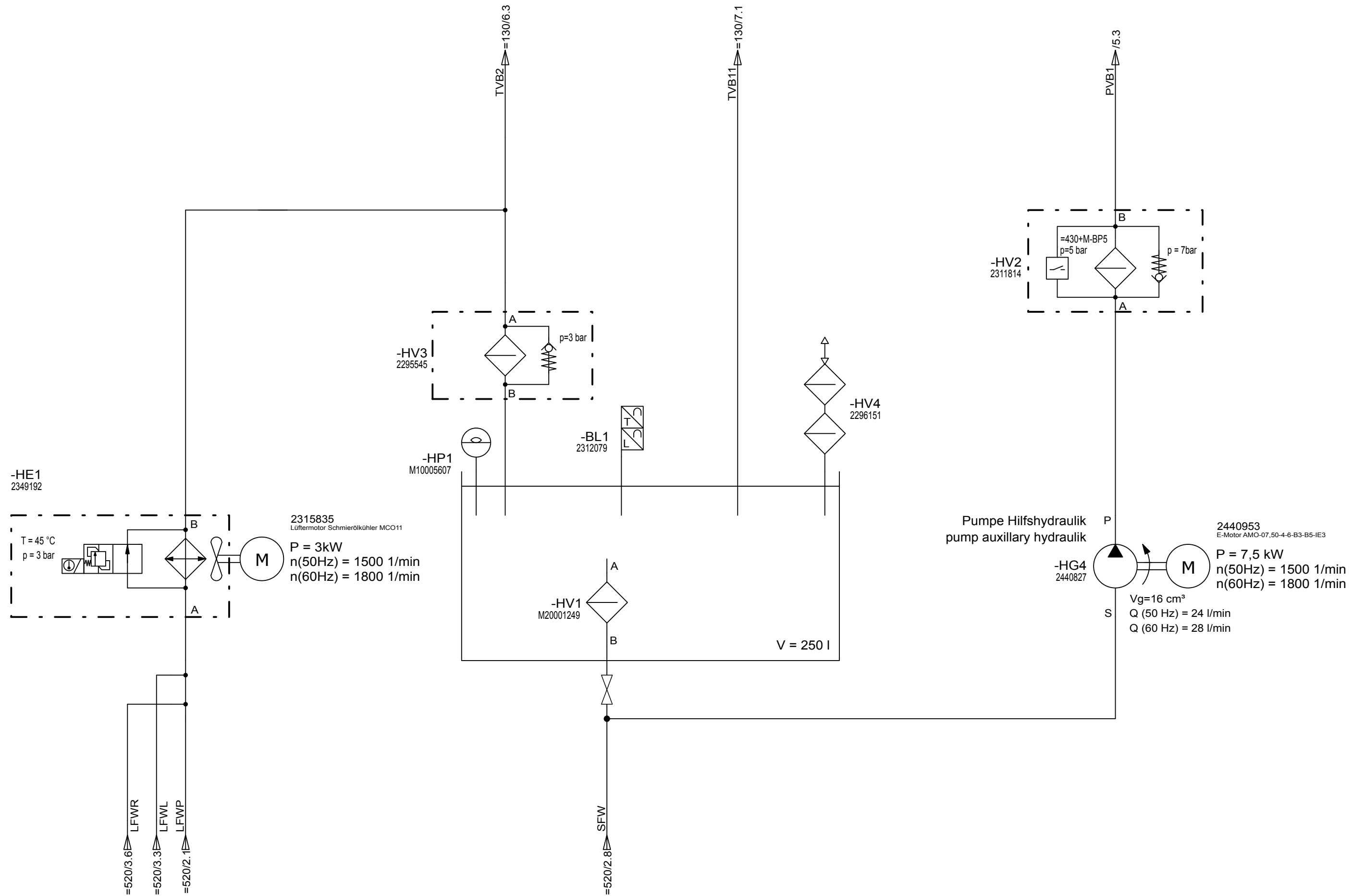
Hydraulics

Schutzvermerk nach ISO 16016 beachten

Refer to protection notice ISO 16016

© 2016 by Kleemann GmbH

1 2 3 4 5 6 7 8



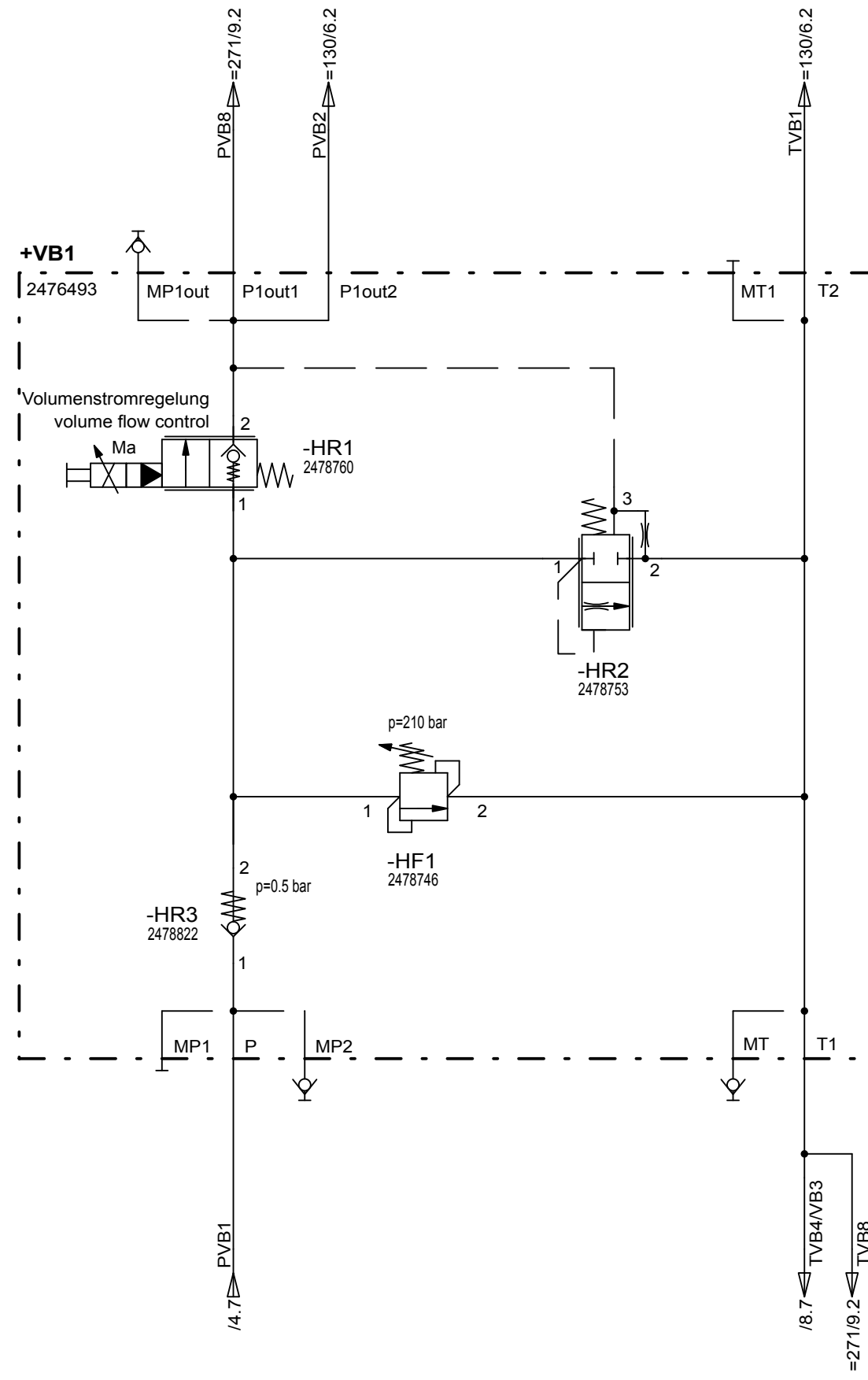
Drawing by: date 18.05.2016 name R. Edel		Approved by: date name		last change: date 22.08.2016 name R. Edel		Status: SF AE =changable PF =prototype release SF =serial release		Document No.:		KLEEMANN		Material No.: 2531745		Revision No.: 02		Hydraulikaggregat hydraulic aggregate		Sheet: 4 of 14 Sheets			
E - CAE		Document type: HFP		Function group No.:		Partial Document No.:		Version No.: 05		Series code: K110 / K111		Valid for Serial No.: from 0001 to 9999		Sheet plant: =430						Sheet Location: +M	

1 2 3 4 5 6 7 8

Hydraulics

Schutzvermerk nach ISO 16016 beachten

Refer to protection notice ISO 16016



Drawing by:		Approved by:		last change:	
date	18.05.2016	date		date	22.08.2016
name	R. Edel	name		name	R. Edel
E - CAE		Document type:		Function group No.:	
		HFP			

Status:	Document No.:
SF AE =changable PF =prototype release SF =serial release	
Partial Document No.:	Version No.:
	05

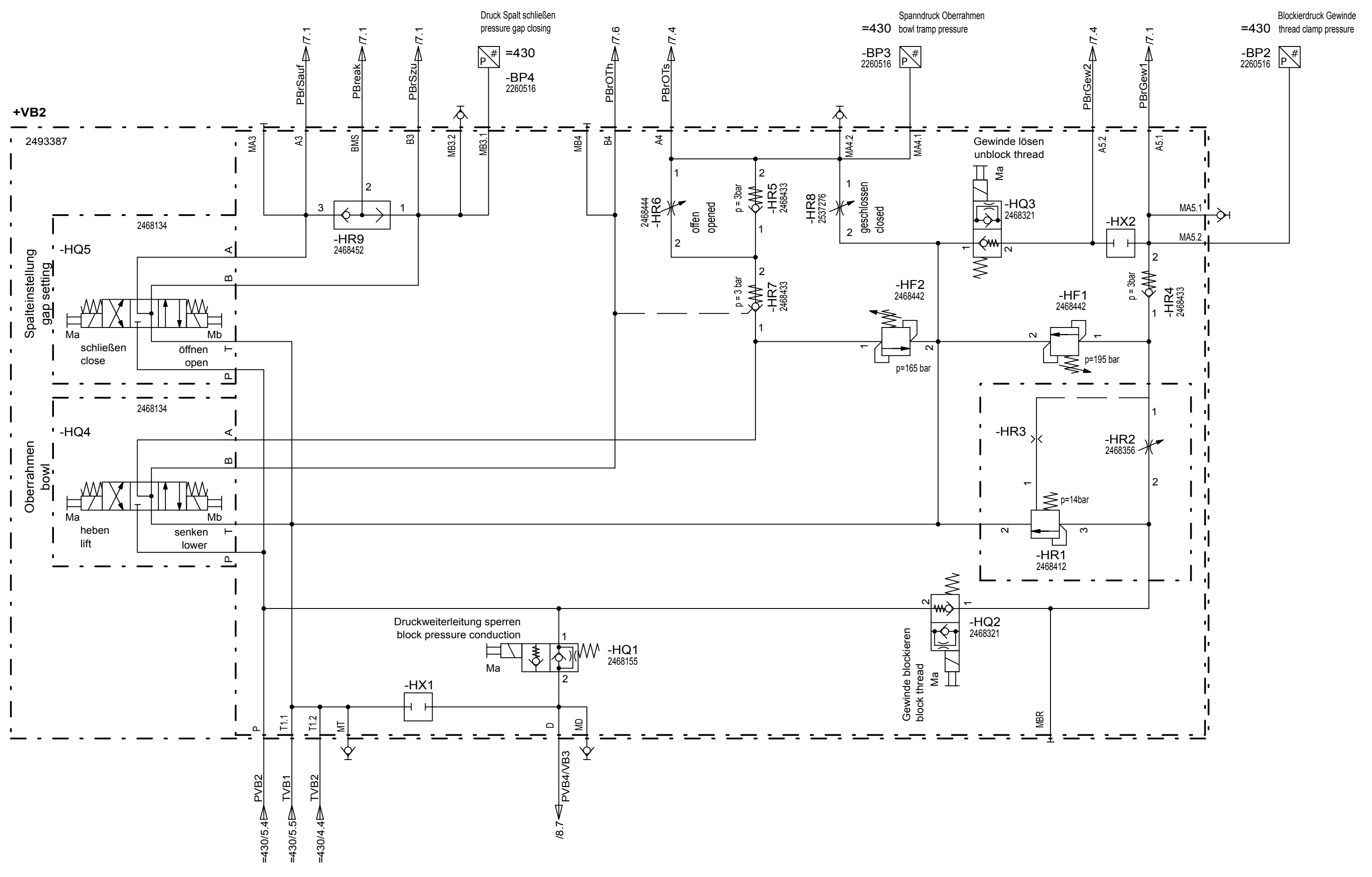


Material No.:	Revision No.:
2531745	02
Series code:	Valid for Serial No.:
K110 / K111	from 0001 to 9999
Sheet plant:	Sheet Location:
=430	+M

**Volumenstromregelung
flow control**

Sheet: **5**
of **14** Sheets

© 2016 by Kleemann GmbH



Drawing by:		Approved by:		last change:		Status:	
date	18.05.2016	date		date	22.08.2016	AE = changable	
name	R. Edel	name		name	R. Edel	PF = prototype release	
E - CAE		Document type:		Function group No.:		SF = serial release	
		HFP					

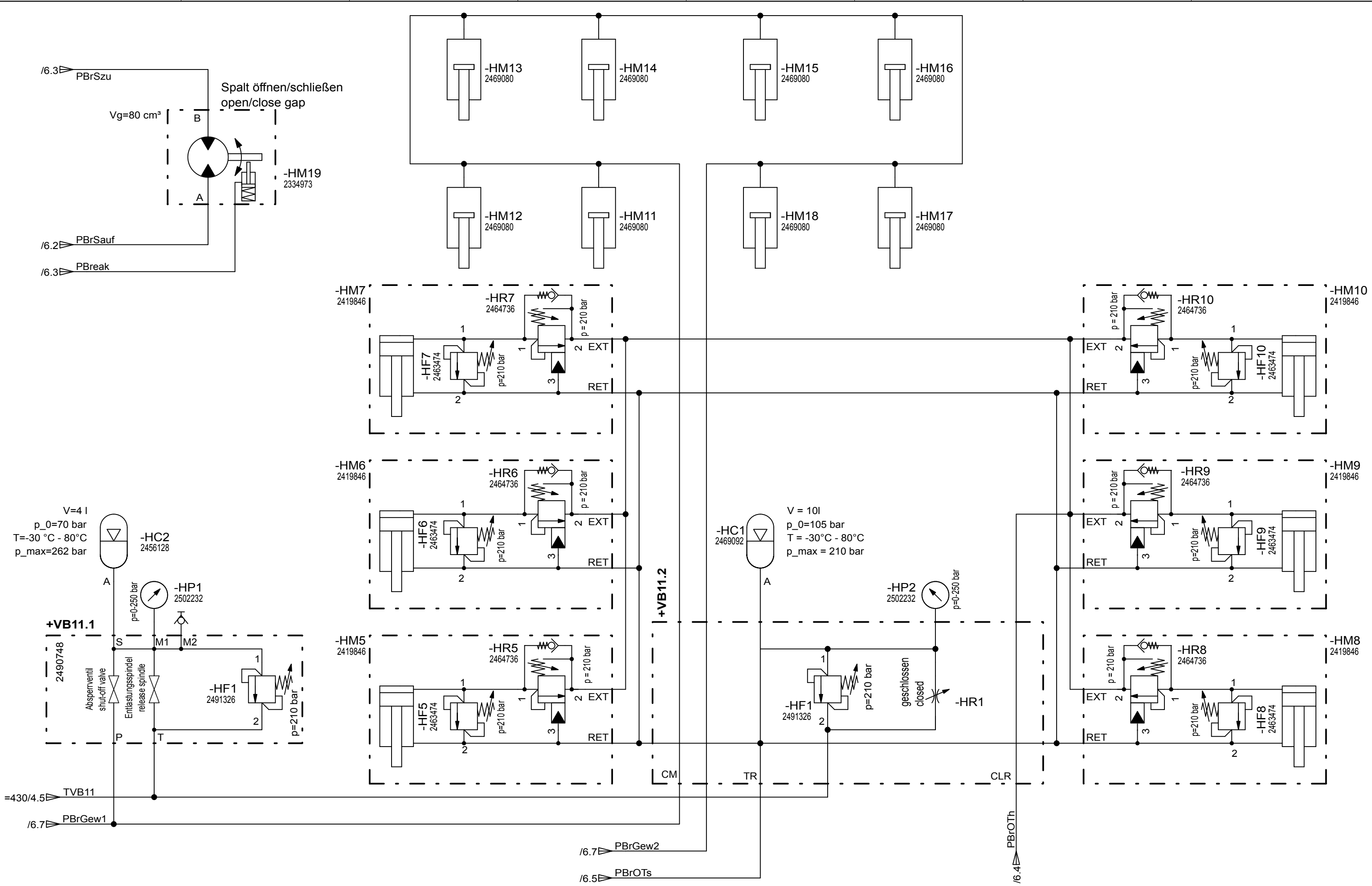
SF	Document No.:
	Partial Document No.:
	Version No.:



Material No.:		Revision No.:	
2531745		02	
Series code:	Valid for Serial No.:		
K110 / K111	from 0001 to 9999		
Sheet plant:	=130		
Sheet Location:	+M		

Brechersteuerblock manifold crusher	
Sheet: 6	of 14 Sheets

Schutzvermerk nach ISO 16016 beachten
 Refer to protection notice ISO 16016
 Hydraulics



Drawing by:		Approved by:		last change:	
date	18.05.2016	date		date	22.08.2016
name	R. Edel	name		name	R. Edel
E - CAE		Document type:		Function group No.:	
		HFP			

Status:	Document No.:
SF AE = changable	
PF = prototype release	Partial Document No.:
SF = serial release	Version No.:
	05



Material No.:	Revision No.:
2531745	02
Series code:	Valid for Serial No.:
K110 / K111	from 0001 to 9999
Sheet plant:	
=130	
Sheet Location:	
+M	

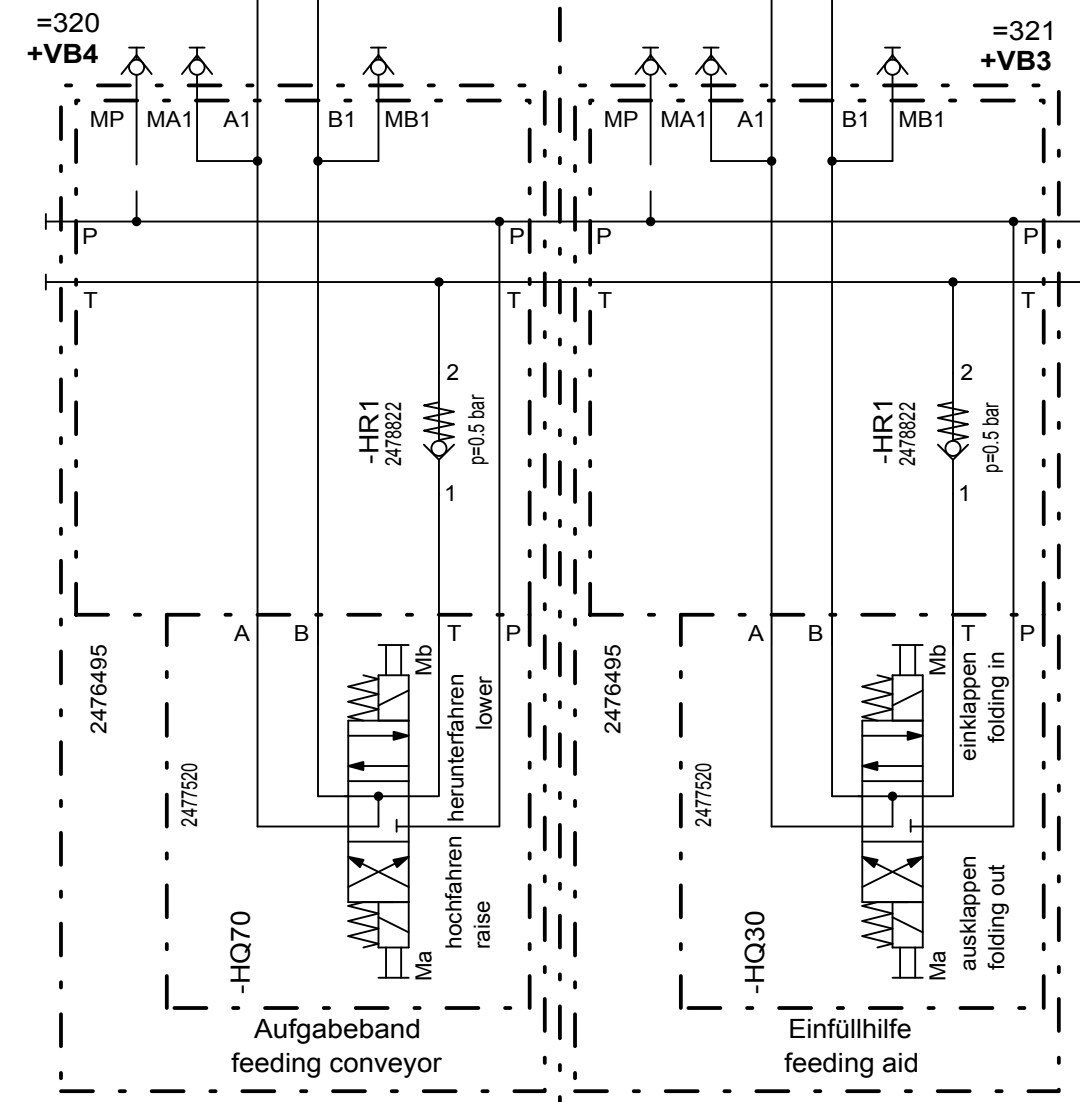
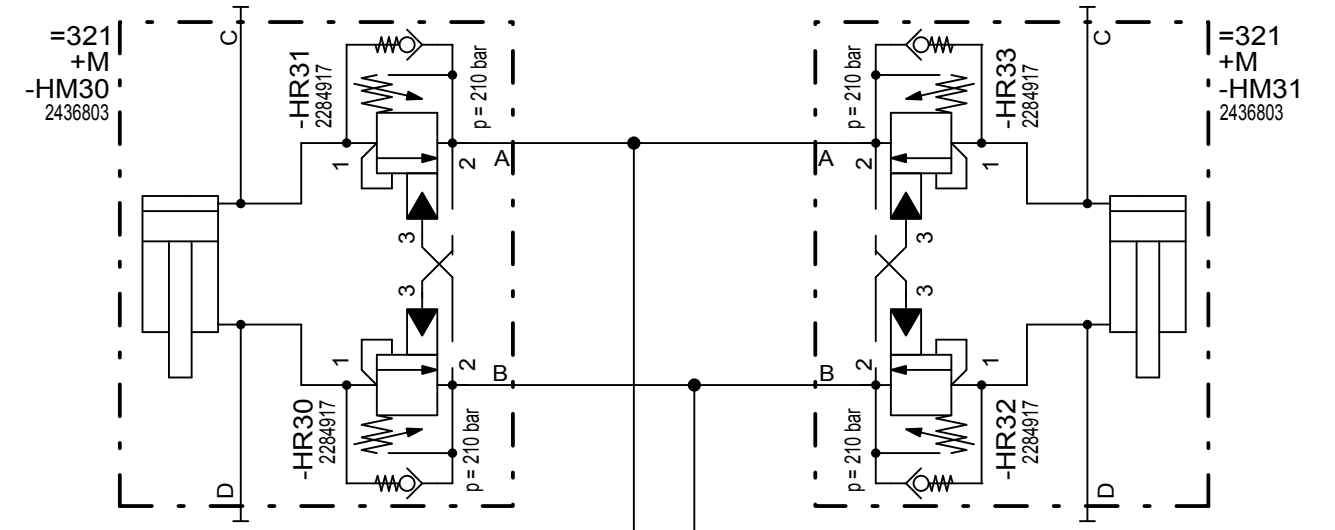
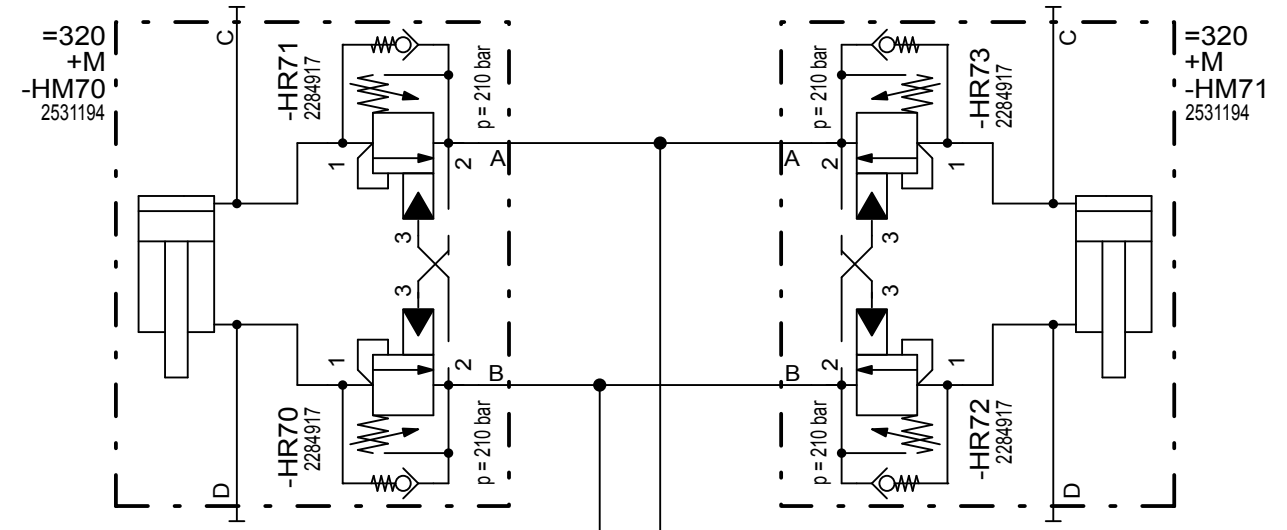
Kegelbrecher KX350	
cone crusher KX350	

© 2016 by Kleemann GmbH

Hydraulics
Schutzvermerk nach ISO 16016 beachten
Refer to protection notice ISO 16016
© 2016 by Kleemann GmbH

Aufgabeband hoch-/herunterfahren
raise/lower feeding conveyor

Einfüllhilfe ein-/ausklappen
fold in/out feeding aid



PVB4/VB3 ≙=130+M/6.4
TVB4/VB3 ≙=430+M/5.5

Option Trichtereinfüllhilfe
option hopper feeding aid

Drawing by:		Approved by:		last change:	
date	18.05.2016	date		date	22.08.2016
name	R. Edel	name		name	R. Edel
E - CAE		Document type:		Function group No.:	
		HFP			

Status:	Document No.:
SF AE =changable PF =prototype release SF =serial release	2476495
Partial Document No.:	Version No.:
	05



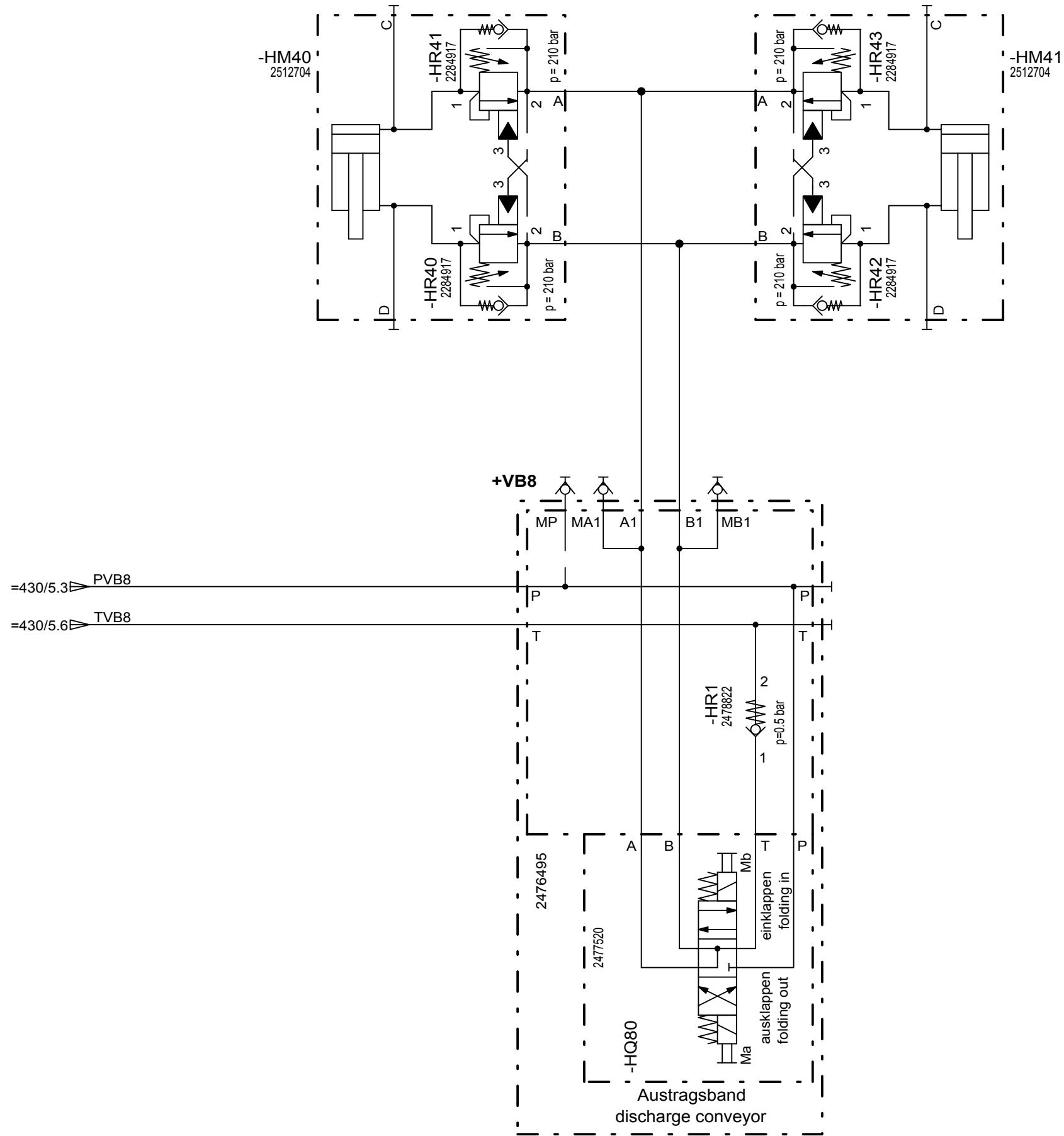
Material No.:	Revision No.:
2531745	02
Series code:	Valid for Serial No.:
K110 / K111	from 0001 to 9999
Sheet plant:	Sheet Location:

Aufgabeband / Einfüllhilfe
feeding conveyor / feeding aid

Sheet:
8
of
14 Sheets

Hydraulics
Schutzvermerk nach ISO 16016 beachten
Refer to protection notice ISO 16016

Option Verlängertes Austragsband ein-/ausklappen
option folding in/out extended discharge conveyor



Drawing by:		Approved by:		last change:	
date	18.05.2016	date		date	22.08.2016
name	R. Edel	name		name	R. Edel
E - CAE		Document type:		Function group No.:	
		HFP			

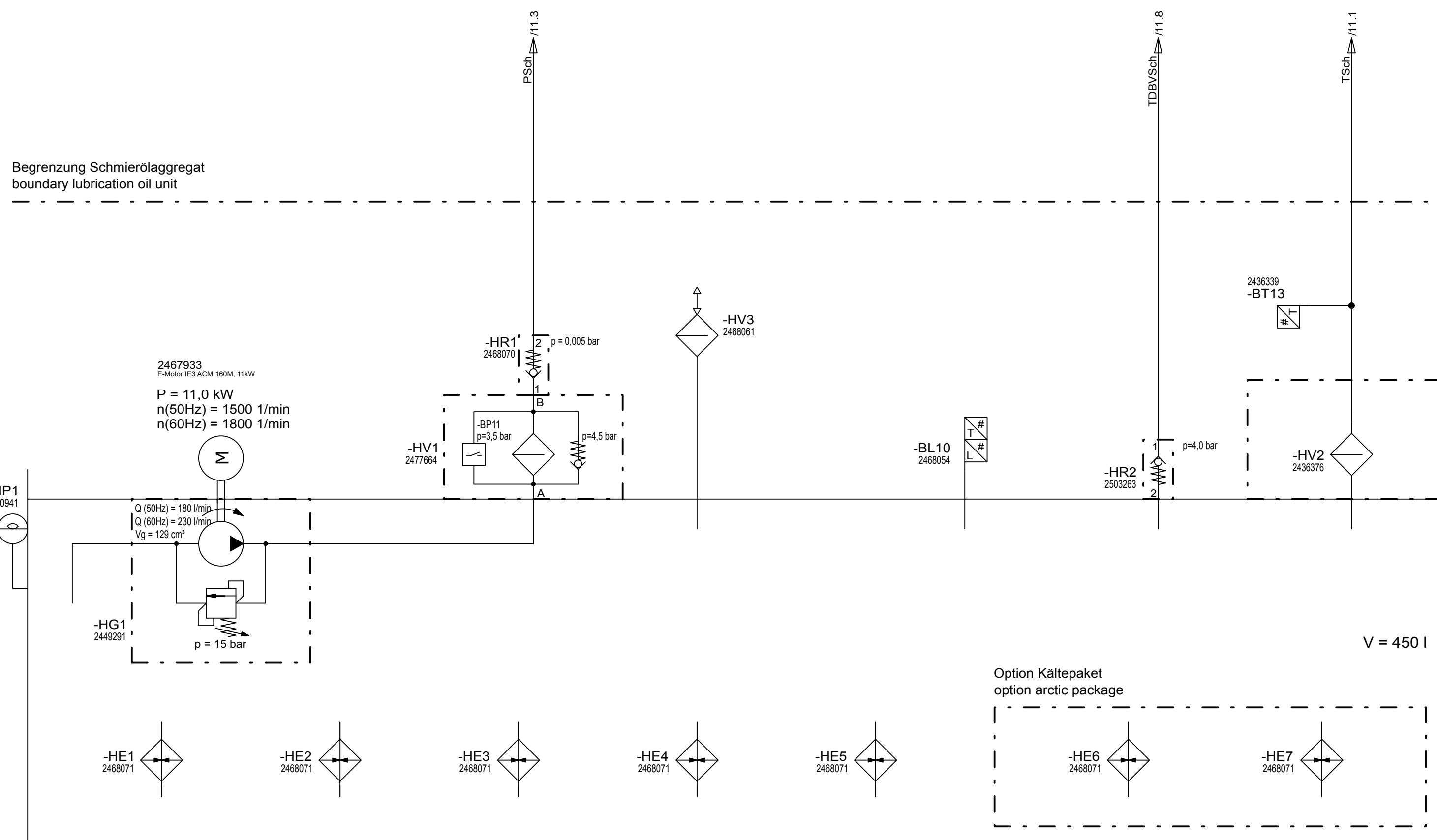
Status:	Document No.:
SF AE =changable PF =prototype release SF =serial release	2531745
Partial Document No.:	Revision No.:
	02
Version No.:	Series code:
05	K110 / K111
	Valid for Serial No.:
	from 0001 to 9999
	Sheet plant: =271
	Sheet Location: +M



Material No.:		Revision No.:	
2531745		02	
Series code:		Valid for Serial No.:	
K110 / K111		from 0001 to 9999	
Sheet plant: =271			
Sheet Location: +M			

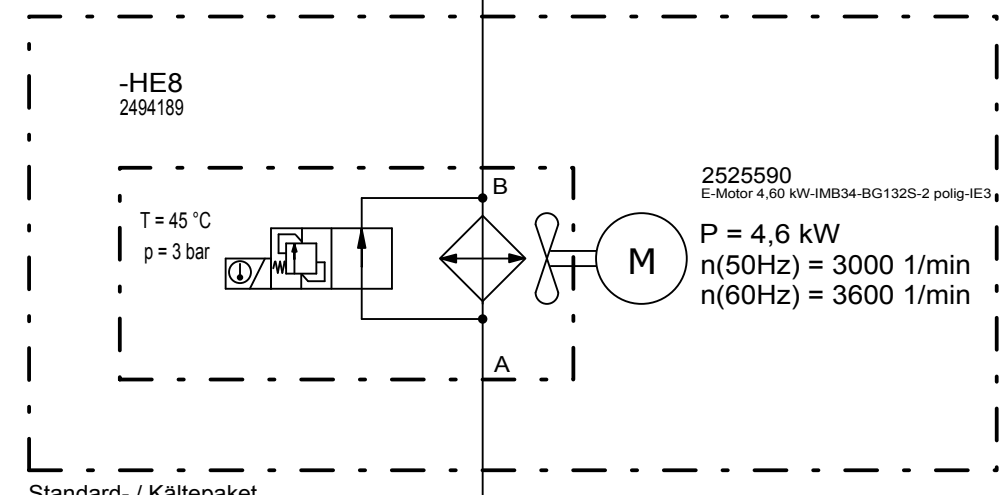
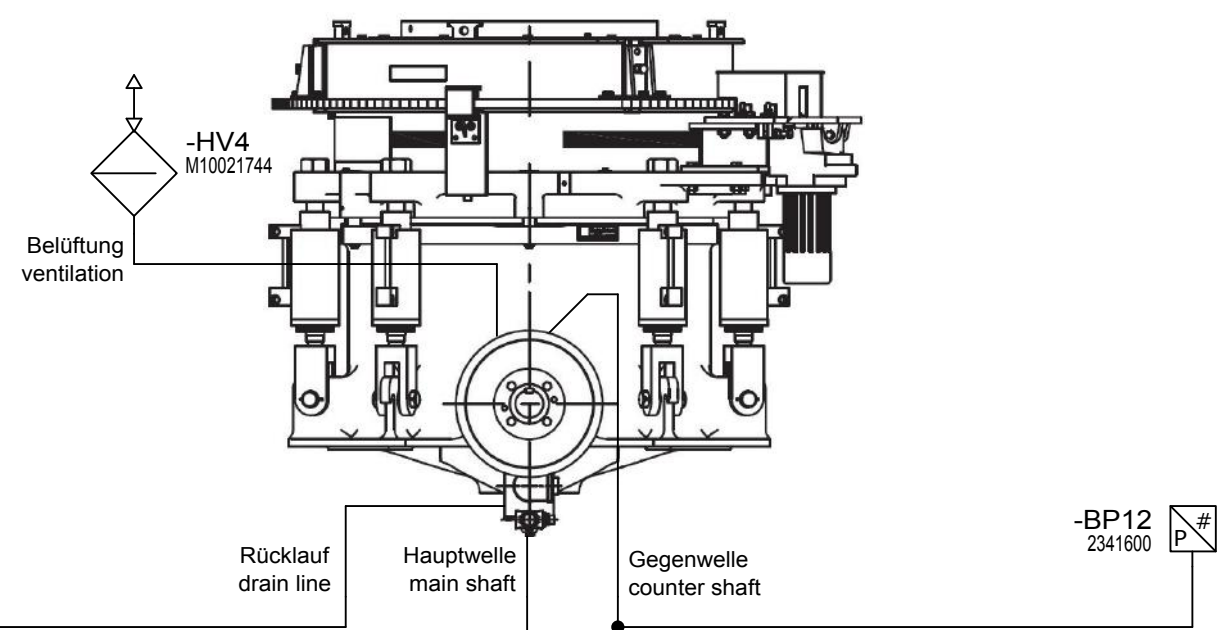
Option hydraulisch klappbares Brecherabzugsband
option hydraulically foldable crusher discharge conveyor

Hydraulics
Schutzvermerk nach ISO 16016 beachten
Refer to protection notice ISO 16016
© 2016 by Kleemann GmbH

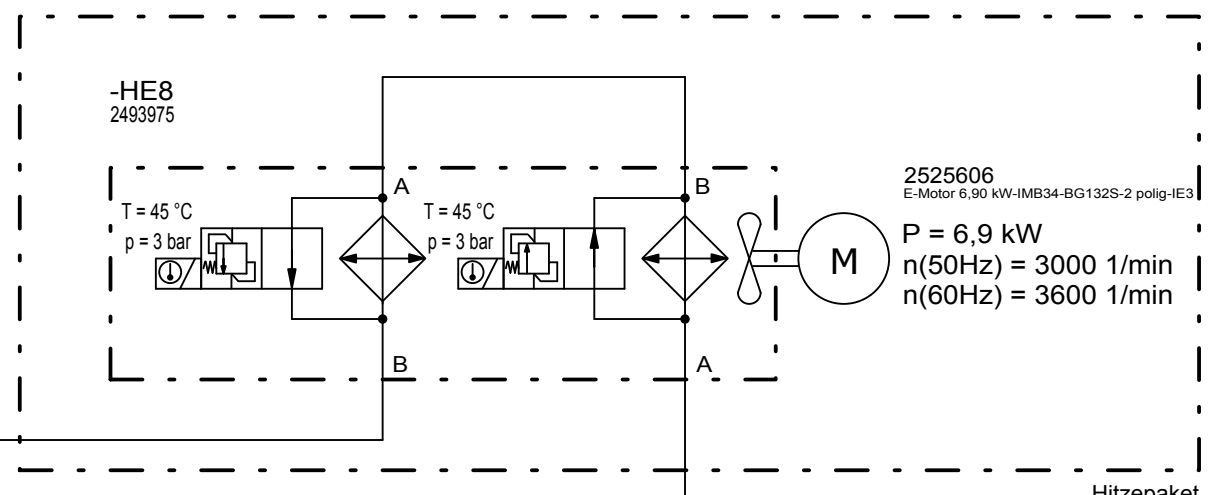


Drawing by:		Approved by:		last change:		Status:		Document No.:		Material No.:		Revision No.:		Schmierölaggregat lubrication unit		Sheet: 10 of 14 Sheets	
date 18.05.2016		date		date 22.08.2016		SF AE =changable		2531745		K110 / K111		02					
name R. Edel		name		name R. Edel		PF = prototype release		Series code:		Valid for Serial No.:		from 0001 to 9999					
E - CAE		Document type: HFP		Function group No.:		SF =serial release		Partial Document No.:		Sheet plant: =440		Sheet Location: +M					
								Version No.: 05		KLEEMANN							

Hydraulics
Schutzvermerk nach ISO 16016 beachten
Refer to protection notice ISO 16016
© 2016 by Kleemann GmbH



Standard- / Kältepaket
standard- / arctic-package



Hitzepaket
heat package

/10.8E
TSch

/10.3E
PSch

/10.7E
TDBV/Sch

Drawing by:		Approved by:		last change:	
date	18.05.2016	date		date	22.08.2016
name	R. Edel	name		name	R. Edel
E - CAE		Document type:		Function group No.:	
		HFP			

Status:	Document No.:
SF AE =changable	
PF =prototype release	Partial Document No.:
SF =serial release	
	Version No.:
	05



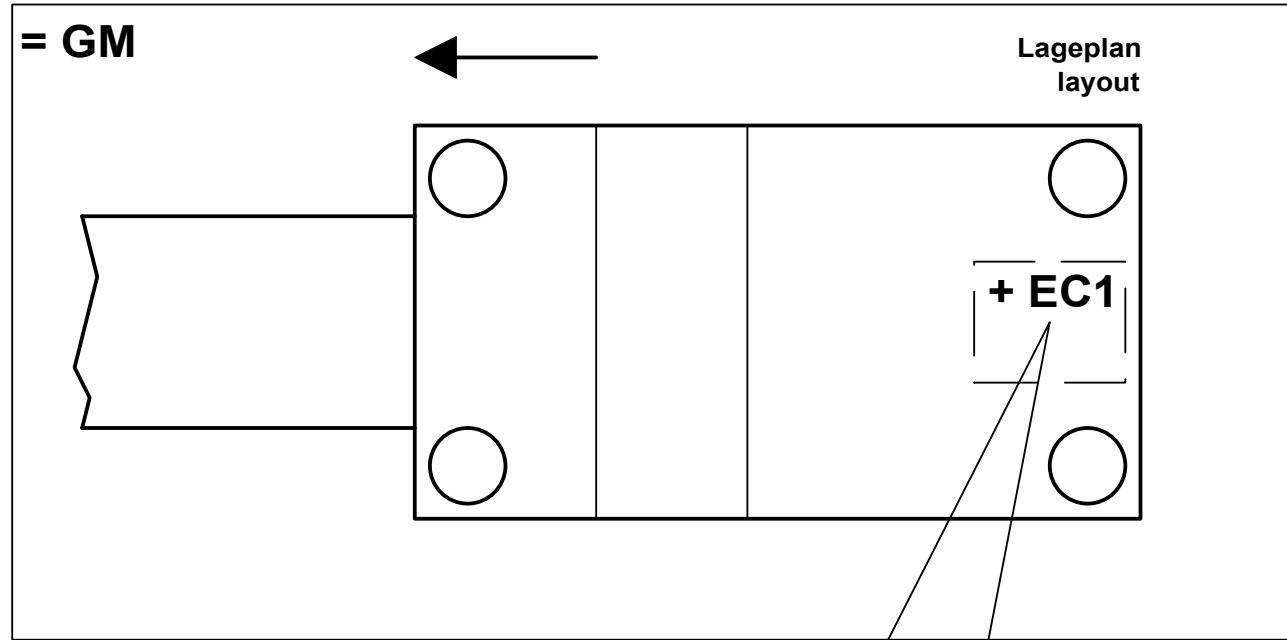
Material No.:		Revision No.:	
2531745		02	
Series code:	Valid for Serial No.:		
K110 / K111	from 0001 to 9999		
Sheet plant:		Sheet Location:	
=440		+M	

**Schmierung
Kegelbrecher
lubrication cone crusher**

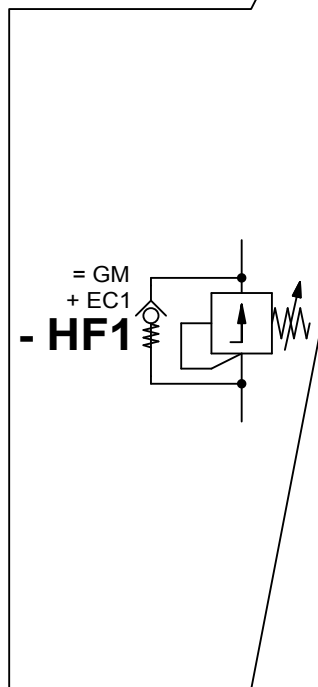
Sheet:
11
of
14 Sheets

Hydraulics
Schutzvermerk nach ISO 16016 beachten
Refer to protection notice ISO 16016
© 2016 by Kleemann GmbH

Aufbau Betriebsmittelkennzeichen / device designation configuration




- = Anlagenkennzeichen
plant designation
 - + Ortskennzeichen
location designation
 - **Art / Zählnummer**
type / number
- Geräteanschlussbezeichnung
connection designation



Drawing by:		Approved by:		last change:		Status:		Document No.:		Material No.:		Revision No.:		Erklärung Aufbau Betriebsmittelkennzeichen Explanation device designation layout		Sheet: 12 of 14 Sheets	
date	18.05.2016	date		date	22.08.2016	SF AE =changable		Partial Document No.:		2531745		02					
name	R. Edel	name		name	R.Edel	PF =prototype release		Version No.:		Series code:		Valid for Serial No.:					
E - CAE		Document type:		Function group No.:		SF =serial release		05		K110 / K111		from 0001 to 9999					
		HFP								Sheet plant:		Sheet Location:					

Gerätekenbuchstaben, hydraulisch (beispielhaft) / device code letter, hydraulic (exemplified)

<u>Gerätekenbuchstabe / device code letter</u>	<u>Deutsch</u>	<u>English</u>	<u>Gerätekenbuchstabe / device code letter</u>	<u>Deutsch</u>	<u>English</u>
+VB	Ventilblock Steuerblock	valve-block manifold	- HP	Manometer	pressure gauge
- HB	Durchflussmesser Durchflusswächter Druckschalter hydraulisch	flow measuring device flow controller hydraulic pressure switch	- HQ	Bremsventil Kugelhahn Lenkeinheit Wegeventil	braking valve ball valve steering unit direction control valve
- HC	Speicher	accumulator	- HR	Drosselventil Drosselrückschlagventil Druckreduzierventil Lasthalteventil Rückschlagventil	throttle valve throttle check valve pressure reduction valve counter balance valve check valve
- HE	Kühler	cooler	- HT	Getriebe	gearbox
- HF	Druckbegrenzungsventil	pressure limiting valve	- HV	Hydraulikfilter	hydraulic filter
- HG	Hydraulikpumpe	hydraulic pump	- HX	Abdeckplatten Reihenflanschplatte Schnellkupplung	cover plates manifold plate quick-action coupling
- HK	Mengenteiler Prioritätsventil Stromregelventil	flow divider priority valve flow control valve	- Ma	Ventil Magnetspule a	valve coil a
- HM	Hydraulikmotor Hydraulikzylinder	hydraulic motor hydraulic cylinder	- Mb	Ventil Magnetspule b	valve coil b

Drawing by: date 18.05.2016 name R. Edel		Approved by: date name		last change: date 22.08.2016 name R. Edel		Status: SF AE =changable PF =prototype release SF =serial release		Document No.:				Material No.: 2531745		Revision No.: 02		Erklärung Gerätekenbuchstaben, hydraulisch Explanation device code letter, hydraulic		Sheet: 13 of 14 Sheets	
E - CAE		Document type: HFP		Function group No.:		Partial Document No.:		Version No.: 05				Series code: K110 / K111		Valid for Serial No.: from 0001 to 9999					
												Sheet plant:		Sheet Location:					

Hydraulics
Schutzvermerk nach ISO 16016 beachten
Refer to protection notice ISO 16016
© 2016 by Kleemann GmbH

Linienformate / line formats			Leitungsbezeichnungen / line designations		
<u>Linienart / line type</u>	<u>Linienstärke / Grafik / line thickness / graphic</u>	<u>Bedeutung / standing</u>	<u>Abkürzungen Leitungsbezeichnungen / line designation abbreviations</u>	<u>Deutsch</u>	<u>English</u>
Volllinie / solid line	————— 0,25mm	Standard, Druckleitung, Tankleitung / standard, pressure line, tank line	P	Druckleitung	pressure line
			T	Tankleitung, Rücklaufleitung	tank line, return line
Strichpunktlinie / dash-dotted line	- · - · - · - · - 0,5mm	Bauteilumrandung / component border	S	Saugleitung	suction line
			L	Leckölleitung	leakage line
Strichlinie / dashed line	- - - - - 0,25mm	Steuerleitung, Lecköl / control line, leakage oil	X	Steuerleitung	control line
			LS	Load Sensing Leitung	load sensing line

Drawing by: date 18.05.2016 name R. Edel		Approved by: date name		last change: date 22.08.2016 name R. Edel		Status: SF AE =changable PF = prototype release SF = serial release		Document No.:		Material No.: 2531745		Revision No.: 02		Erklärung Linienformate, Leitungsbezeichnungen Explanation line formats, line designations		Sheet: 14	
E - CAE		Document type: HFP		Function group No.:		Partial Document No.:		Version No.: 05		Series code: K110 / K111		Valid for Serial No.: from 0001 to 9999				of 14	
										Sheet plant: Sheet Location:						Sheets	