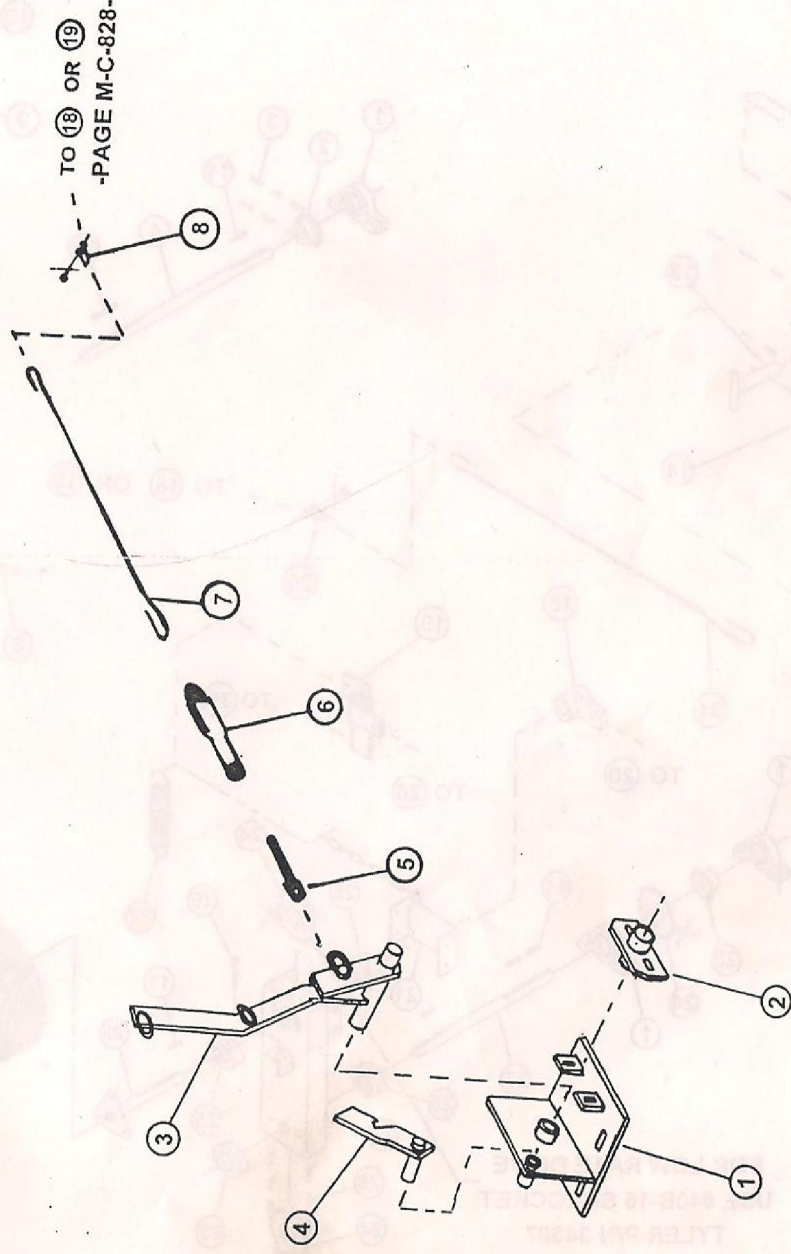


CONVEYOR DRIVE - ROPE PULL ENGAGING
MOONWALK 260

(Ref. Dwg. M-A-943)

<u>Ref.</u>	<u>Part No.</u>	<u>Qty.</u>	<u>Description</u>
1.	39130	1	Mount Wadment
2.	39140	1	Support Weldment
3.	39136	1	Arm Weldment - Engaging
4.	3047	1	Latch Weldment
5.	24504	1	Take-Up Weldment
6.	38897	1	Linkage Weldment
7.	39164	1	Cable - S.S.
8.	71074	4	Clamp - Cable (Not Shown)
	32478	2	Clevis - (Includes



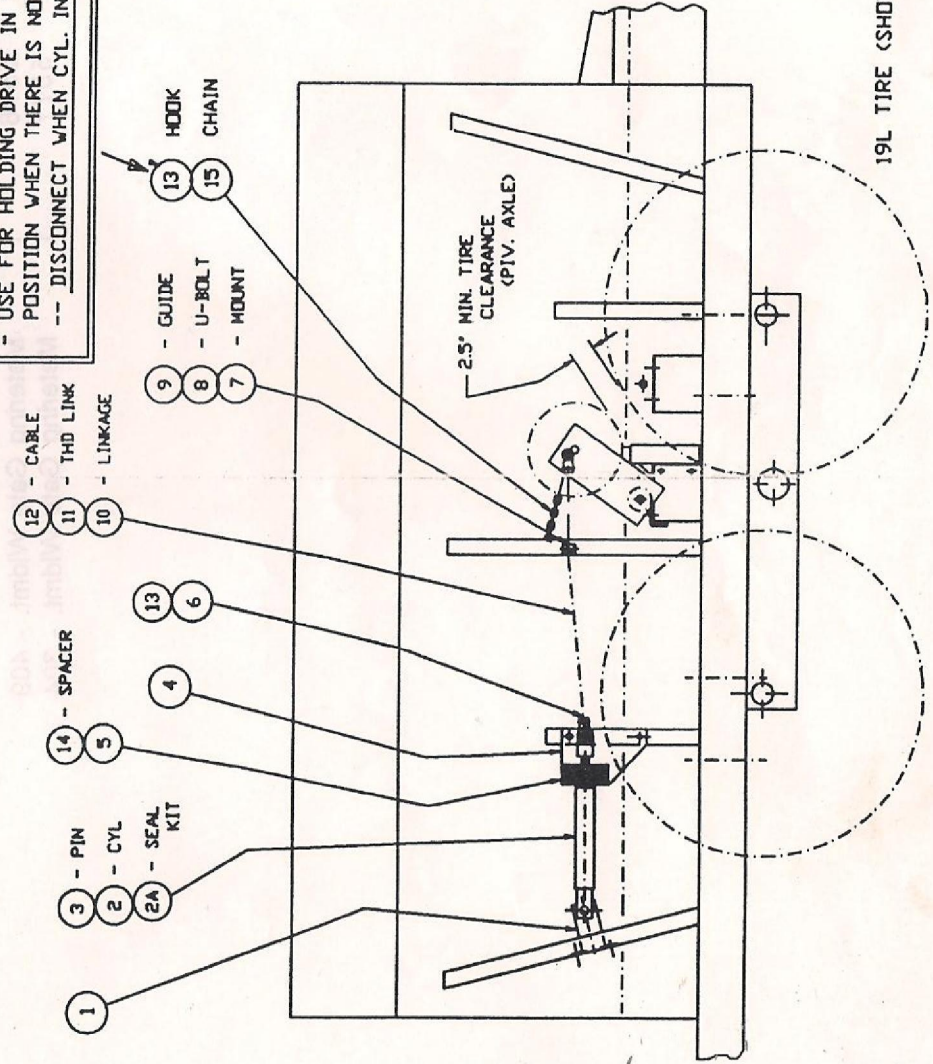
CONVEYOR DRIVE - HYDRAULIC ENGAGING

MOONWALK 260

(Ref. Dwg. M-A-944)

Ref.	Part No.	Qty.	Description
1.	38945	1	Anchor Weldment
2.	51461	1	Cylinder
2A.	98180	1	Seal Kit
3.	23177	2	Pin
4.	38944	1	Mount
5.	38948	1	Guide - Wood
6.	38949	1	Pivot Weldment
7.	38951	1	Mount
8.	34458	1	U-Bolt
9.	34399	1	Guide - Glass
10.	38897	1	Linkage
11.	38900	1	Thd. Link
12.	38785	1	Cable
13.	32478	3	Clevis
14.	38952	2	Spacer (If Needed)
15.	31360	1	Chain - 12 Links, 3/16"
16.	39290	1	Hook - Double Snap

- USE FOR HOLDING DRIVE IN TRANSPORT POSITION WHEN THERE IS NO POWER TO CYL. --- DISCONNECT WHEN CYL. IN ENGAGED ---



DUAL DISTRIBUTOR PACKAGE - MOONWALK SERIES

(Ref. Dwg. M-C-022)

(Page 1 of 2)

<u>Ref.</u>	<u>Part No.</u>	<u>Qty.</u>	<u>Description</u>
1.	3337	1	Divider Widmt.- Rear Chute - Dual Dist.-409
	3336	1	Divider Widmt.- Rear Chute - Dual Dist.-304
2.	3335	1	Chute Widmt. - Dual Dist. - 409
	3334	1	Chute Widmt. - Dual Dist. - 304
3.	30741	2	Curved Deflector - 409
	30308	2	Curved Deflector - 304
4.	34664	2	Vinyl Cover
5.	10031	3	Key - 1/4" x 1/4" x 1 1/2"
6.	3380	2	Distributor Widmt.
7.	10339	8	Fan Blade
8.	5350	1	Dual Gearbox Assy
9.	30708	2	Bearing - 2-Hole Flange
	20366		Bearing Insert
10.	3301	1	Drive Roller Widmt.
11.	10189	1	Key
12.	11281	1	Hub & Plate
13.	11282	1	Sprocket - #50-40 Tooth
14.	11280	1	Collar
15.	10220	1	Shear Pin & Cotter Pin
	1503		Sprocket Assy - #40 Tooth Shear (Includes Ref. No's 12, 13, 14 & 15)
16.	30927	1	Plate - Gate Opening
17.	10113	1	Wood Block
18.	5576	1	Metering Gate Widmt. - 409
	5577	1	Metering Gate Widmt. - 304



DUAL DISTRIBUTOR PACKAGE - MOONWALK SERIES

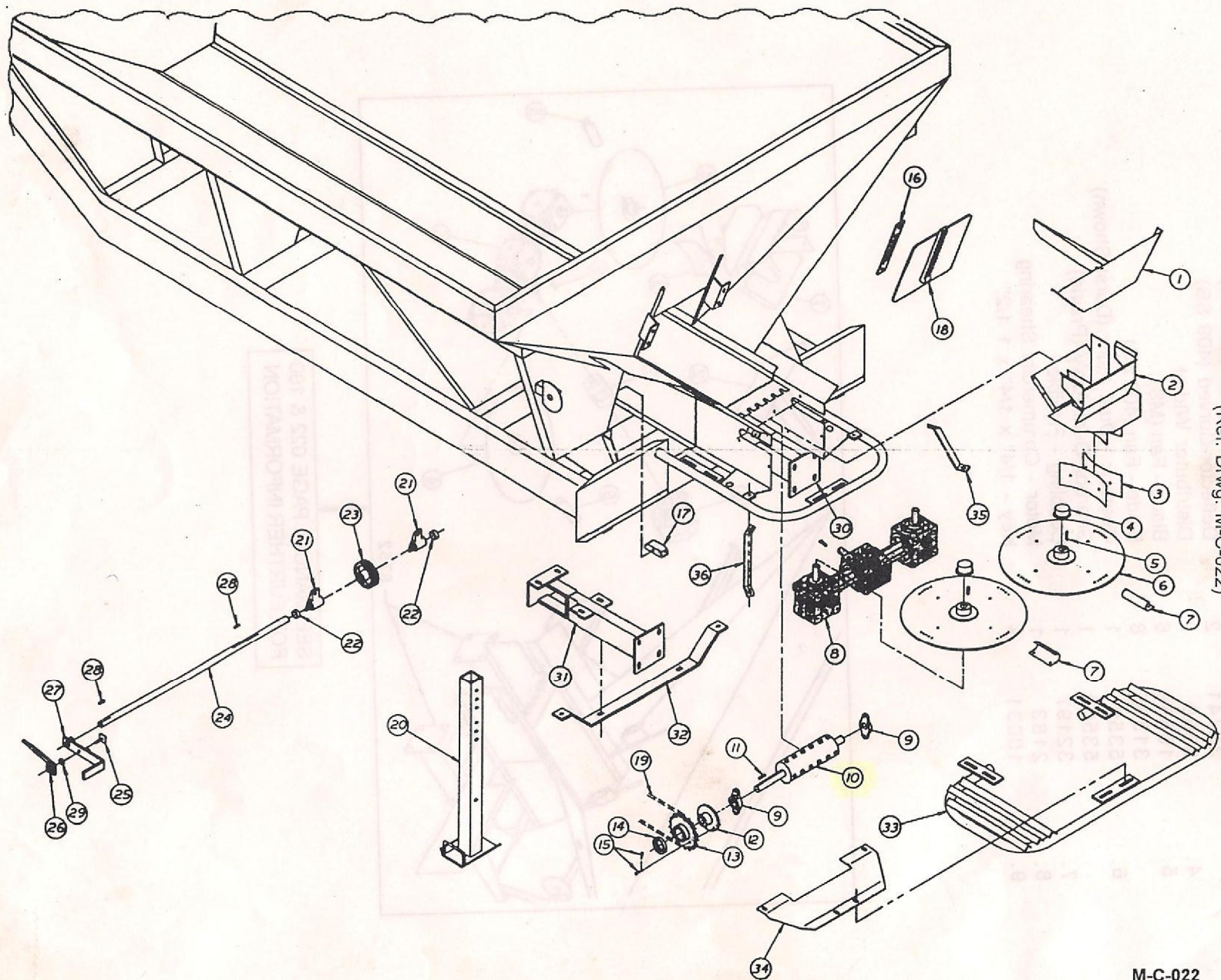
(Ref. Dwg. M-C-022)

(Page 2 of 2)

<u>Ref.</u>	<u>Part No.</u>	<u>Qty.</u>	<u>Description</u>
19.			<i>lock</i> Chain - #20-50 (See Ref. Pgs. 030, 270 & 602)
20.	5492	1	Stand Widmt. - Rear Safety (Pivotal Axle & Single Axle Units)
21.	10494	2	Bearing - 3/4" Pillow Block
22.	10054	2	Set Collar - 3/4"
23.	10051	1	Pinion Gear
24.	32304	1	Shaft - Metering Gate <i>medicate</i>
25.	1677	1	Lock Widmt. - Handle
26.	34712	1	Arm
27.	2131	1	Handle Widmt.
28.	10171	2	Key - 3/16" x 3/16" x 1"
29.	50146	1	Flatwasher - 3/8" SS
30.	5884	1	R.H. Mount Widmt.
31.	5885	1	L.H. Mount Widmt.
32.	34452	1	Brace
33.	5936	1	Safety Bumper Widmt.
34.	37024	1	Filler - Bumper - 409
	37076	1	Filler - Bumper - 304
35.	34473	1	R.H. Brace - 409
	34475	1	R.H. Brace - 304
36.	34474	1	L.H. Brace - 409
	34476	1	L.H. Brace - 304

NOT ILLUSTRATED

5074	1	V-Hood Widmt. - 409
5075	1	V-Hood Widmt. - 304



DISTRIBUTOR (DUAL) PACKAGE - MOONWALK SERIES
 (Ref. Dwg. M-C-022)

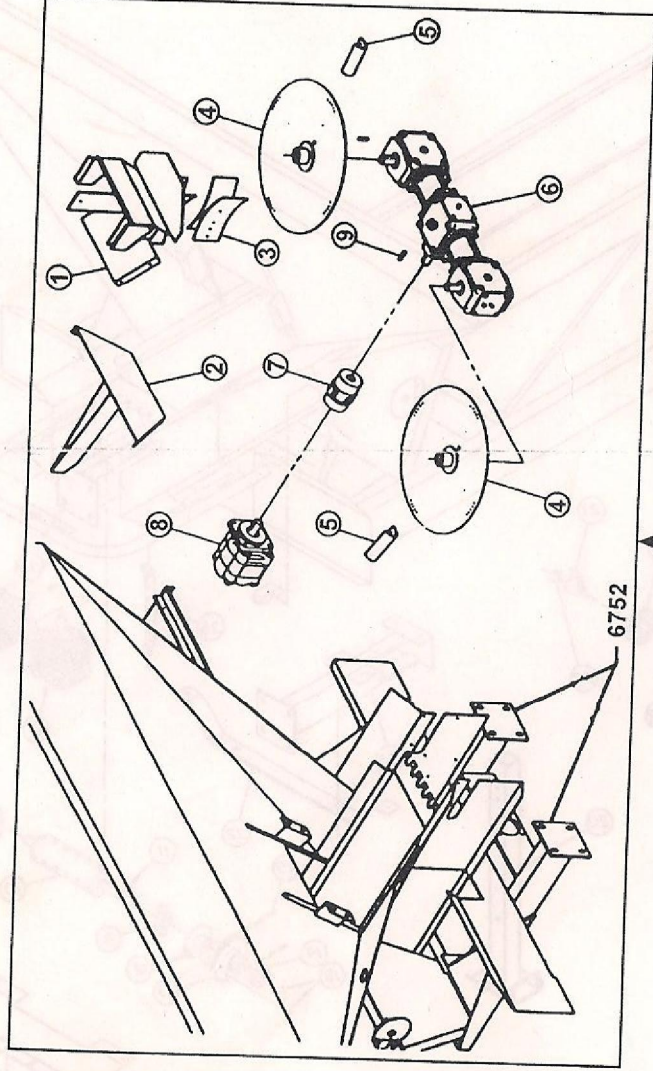
M-C-022

MW260-39

DISTRIBUTOR - DUAL-HYDRAULIC

(Ref. Dwg. 38331)

<u>Ref.</u>	<u>Part No.</u>	<u>Qty</u>	<u>Description</u>
1.	3334	1	Chute Wldmt (304 SS)
2.	3335	1	Chute Wldmt (409 SS)
	3336	1	Divider Wldmt (304 SS)
3.	3337	1	Divider Wldmt (409 SS)
	30308	2	Deflector-Curved (304 SS)
4.	30741	2	Deflector-Curved (409 SS)
5.	3380	2	Distributor Wldmt
	10339	8	Blade - Fan (MS)
6.	31365	8	Blade - Fan (409 SS)
	5350	1	Gearbox - Dual Ass'y (Durst Shown)
7.	5350A	1	Gearbox-Dual Ass'y (Prairie)
8.	32197	1	Coupling - Flexible
9.	2183	1	Motor - Commercial Shearing
	10031	3	Key - 1/4" x 1/4" x 1 1/2"



SEE MANUAL PAGE 022 & 190
FOR FURTHER INFORMATION

RATE DECAL - STANDARD

15.24 Meter Pattern (50 Foot)

FERTILIZER

Gate Opening	MATERIAL WEIGHT — PER CUBIC DECIMETER (KILO/1000 CM ³)														
	.721	.801	.833	.865	.897	.929	.961	.993	1.025	1.057	1.089	1.121	1.153	1.185	1.217
1½	73	81	84	88	91	94	97	101	104	107	110	114	117	120	123
2	99	110	11	119	123	128	132	136	141	145	150	154	158	163	167
2½	127	141	147	152	158	164	169	175	181	186	192	198	203	209	214
3	152	169	176	182	189	196	203	209	216	223	230	236	243	250	257
	290	322	335	348	361	374	387	400	412	425	438	451	464	477	490
3½	182	202	210	218	226	235	243	251	259	267	275	283	291	299	307
	345	363	399	414	429	445	460	475	491	506	521	537	552	567	583
4	207	230	239	248	258	267	276	285	294	304	313	322	331	340	350
	395	439	456	474	492	509	527	544	562	579	597	614	632	650	667
4½	235	261	272	282	292	303	313	324	334	345	355	366	376	386	397
	447	497	517	536	556	576	596	616	636	656	675	695	715	735	755
5	261	290	302	313	325	336	348	360	371	383	395	406	418	429	441
	498	553	575	598	620	642	664	686	708	730	752	775	797	819	841
5½	288	320	333	346	358	371	384	397	410	422	435	448	461	474	486
	549	610	634	659	683	708	732	756	781	805	830	854	878	903	927
6	316	351	365	379	393	407	421	435	449	463	478	492	506	520	534
	602	669	696	722	749	776	803	829	856	883	910	936	963	990	1017
6½	344	382	398	413	428	443	459	474	489	505	520	535	550	566	581
	656	729	758	787	816	846	875	904	933	962	991	1020	1050	1079	1108
7	369	410	426	443	459	476	492	508	525	541	558	574	590	607	623
	704	782	814	845	876	907	939	970	1001	1033	1064	1095	1126	1158	1189

LOW RANGE — Using 15 tooth to 96 tooth sprockets — For kilograms per hectare use top number in box
 HIGH RANGE — Using 25 tooth to 84 tooth sprockets — For kilograms per hectare use bottom number in box

TYLER INDUSTRIES, INC. - BENSON, MN 56215

7/82

32530A

MMW260-70

RATE DECAL - STANDARD

12.19 Meter Pattern (40 Foot)

FERTILIZER

Gate Opening	MATERIAL WEIGHT — PER CUBIC DECIMETER (KILO/1000 CM ³)														
	.721	.801	.833	.865	.897	.929	.961	.993	1.025	1.057	1.089	1.121	1.153	1.185	1.217
1½	91	101	105	109	113	117	121	125	129	133	138	142	146	150	154
	173	192	200	208	215	223	231	238	246	254	261	269	277	284	292
2	123	137	142	148	153	159	164	169	175	180	186	191	197	202	208
	235	261	272	282	292	303	313	324	334	345	355	366	378	386	397
2½	158	176	183	190	197	204	211	218	225	232	239	246	253	260	267
	303	337	350	364	377	391	404	417	431	444	458	471	485	498	512
3	191	212	221	229	238	246	255	263	272	280	289	297	306	314	323
	363	403	419	436	452	468	484	500	516	532	549	565	581	597	613
3½	228	253	263	274	284	294	304	314	324	334	345	354	365	375	385
	432	480	499	518	538	557	576	595	614	634	653	672	691	710	730
4	259	288	299	311	322	334	345	357	368	380	391	403	414	426	437
	493	548	570	592	613	635	657	679	701	723	745	767	789	811	833
4½	294	327	340	353	366	379	392	405	418	431	444	457	470	483	497
	559	621	646	671	696	720	745	770	795	820	845	870	894	919	944
5	327	363	378	392	407	421	436	451	465	480	494	509	523	538	552
	622	691	719	746	774	802	829	857	885	912	940	968	995	1023	1050
5½	360	400	416	432	448	464	480	496	512	528	544	560	576	592	608
	686	762	793	823	854	884	915	945	976	1006	1037	1067	1098	1128	1159
6	396	440	458	475	493	510	528	546	563	581	598	616	634	651	669
	752	836	869	902	936	969	1003	1036	1069	1103	1136	1170	1203	1237	1270
6½	429	477	496	515	534	553	572	591	610	629	648	667	686	705	725
	819	910	946	983	1019	1055	1092	1128	1165	1201	1238	1274	1310	1347	1383
7	482	513	534	554	575	595	616	637	657	678	698	719	739	760	780
	580	978	1017	1056	1095	1134	1173	1212	1252	1291	1330	1369	1408	1447	1486

LOW RANGE — Using 15 tooth to 96 tooth sprockets — For kilograms per hectare use top number in box
 HIGH RANGE — Using 25 tooth to 84 tooth sprockets — For kilograms per hectare use bottom number in box

TYLER INDUSTRIES, INC. - BENSON, MN 56215

7/82

32529A

MMW260-69

RATE DECAL - STANDARD

40 FOOT PATTERN

FERTILIZER

Gate Opening	MATERIAL WEIGHT PER CUBIC FOOT														
	45	50	52	54	56	58	60	62	64	66	68	70	72	74	76
1½	81	90	94	97	101	104	108	112	115	119	122	126	130	133	137
2	110	122	127	132	137	142	147	152	156	161	166	171	176	181	186
2½	141	157	163	169	175	182	188	194	201	207	213	219	226	232	238
3	170	189	196	204	212	219	227	234	242	249	257	264	272	280	287
	324	360	374	389	403	418	432	446	461	475	490	504	518	533	547
3½	203	226	235	244	253	262	271	280	289	298	307	316	325	334	343
	385	428	445	462	479	496	513	530	548	565	582	599	616	633	650
4	231	257	267	277	287	298	308	318	329	339	349	359	370	380	390
	440	489	508	528	548	567	587	606	626	645	665	684	704	724	743
4½	262	291	303	314	326	338	349	361	373	384	396	408	419	431	442
	499	554	577	599	621	643	665	688	710	732	754	776	798	821	843
5	292	324	337	350	363	376	389	402	415	428	441	454	467	480	493
	555	617	641	666	691	715	740	765	789	814	839	863	888	913	937
5½	321	357	371	385	399	414	428	442	457	471	485	499	514	528	542
	612	680	707	734	762	789	816	843	870	898	925	952	979	1006	1034
6	353	392	408	424	439	455	471	486	502	518	533	549	565	580	596
	671	746	775	805	835	865	895	925	954	984	1014	1044	1074	1103	1133
6½	383	426	443	460	477	494	511	528	545	562	579	596	613	630	647
	731	812	845	877	910	942	975	1007	1040	1072	1105	1137	1170	1202	1235
7	412	458	476	494	513	531	549	568	586	604	623	641	659	677	696
	785	872	907	942	977	1012	1047	1082	1116	1151	1186	1221	1256	1291	1326

LOW RANGE — Using 15 tooth to 96 tooth sprockets — For rate per acre use top number in box
 HIGH RANGE — Using 25 tooth to 84 tooth sprockets — For rate per acre use bottom number in box

7/87

TYLER INDUSTRIES, INC. - BENSON, MN 56215

P/N 30853B

MMW260-68

RATE DECAL - STANDARD 50 FOOT PATTERN FERTILIZER

Gate Opening	45	50	52	54	56	58	60	62	64	66	68	70	72	74	76
1 1/2	65	72	75	78	81	84	87	90	92	95	98	101	104	107	110
2	88	98	102	106	110	113	117	121	125	129	133	137	141	145	149
2 1/2	113	126	131	136	141	146	151	156	161	166	171	176	181	186	191
3	136	151	157	163	169	175	181	187	193	199	206	212	218	224	230
3 1/2	162	180	187	194	202	209	216	223	230	238	245	252	259	266	274
4	185	206	214	222	230	238	247	255	263	271	280	288	296	304	312
4 1/2	210	233	243	252	261	271	280	289	299	308	317	327	336	345	355
5	233	259	269	280	290	300	311	321	331	342	352	362	373	383	394
5 1/2	257	286	297	308	320	331	343	354	366	377	388	400	411	423	434
6	282	313	326	338	351	363	376	389	401	414	426	439	451	464	476
6 1/2	307	341	355	368	382	396	409	423	437	450	464	478	491	505	518
7	329	366	380	395	409	424	439	453	468	483	497	512	526	541	556

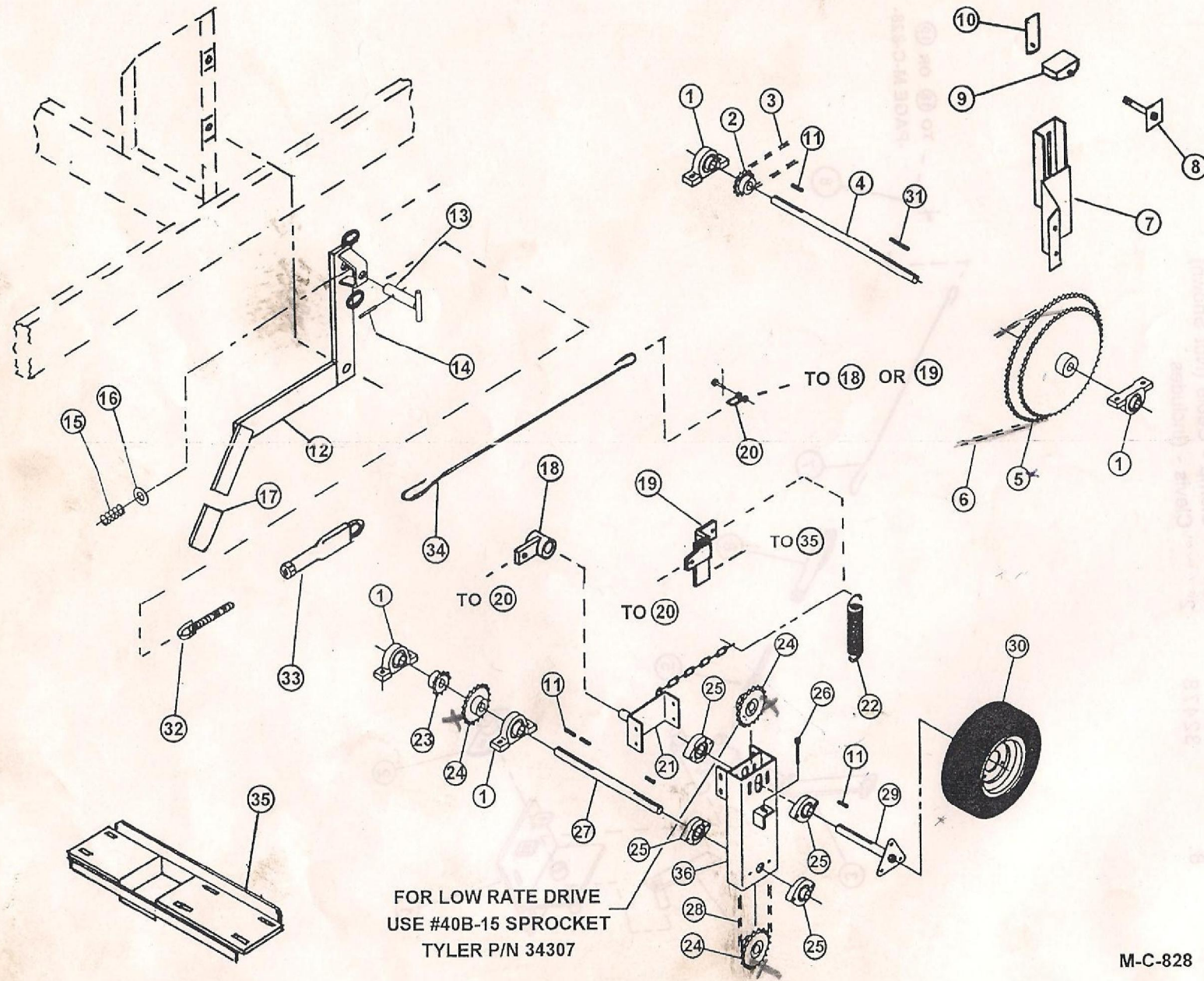
LOW RANGE — Using 15 tooth to 96 tooth sprockets — For rate per acre use top number in box
 HIGH RANGE — Using 25 tooth to 84 tooth sprockets — For rate per acre use bottom number in box

TYLER INDUSTRIES, INC. - BENSON, MN 56215

P/N 30906B

7/87

MW260-67



CONVEYOR DRIVE - HENSCHEN & PIVOTAL AXLE
 MOONWALK 260
 (Ref. Dwg. M-C-828)

FOR LOW RATE DRIVE
 USE #40B-15 SPROCKET
 TYLER P/N 34307

M-C-828

MMW260-34