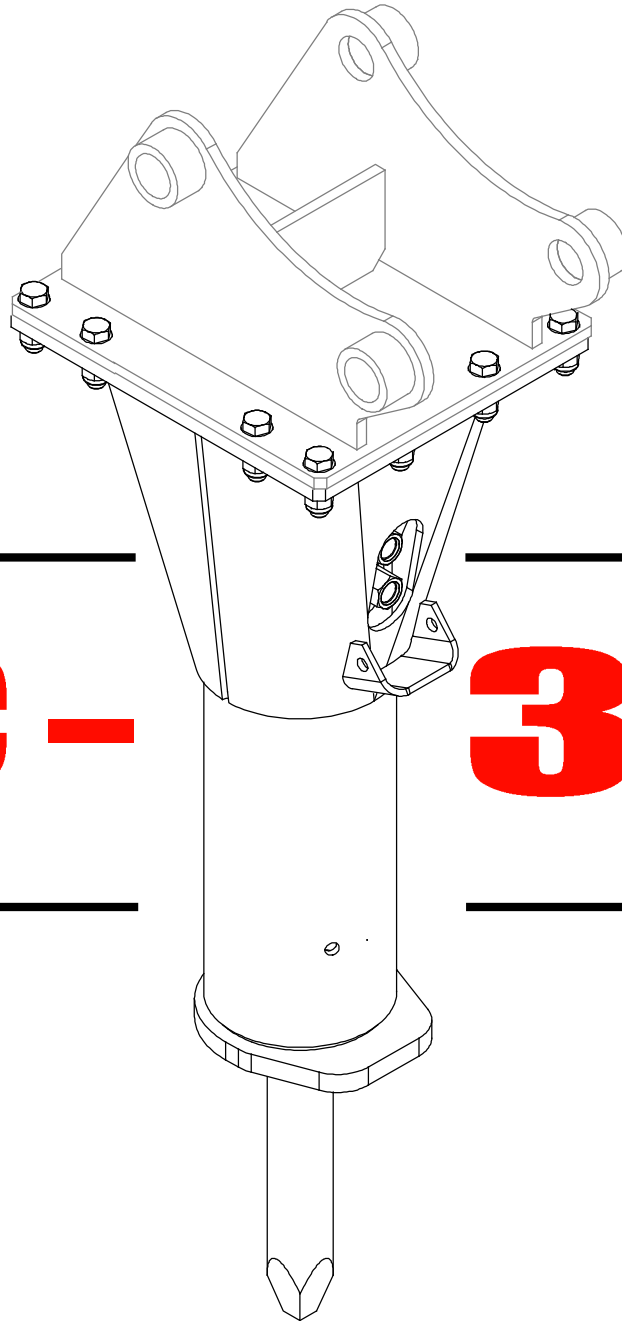
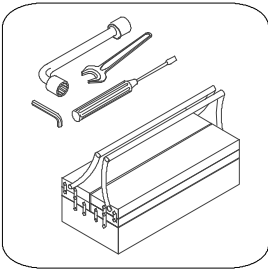


EN

FR

DE

ES



SC -

36

MONTABERT®

EN

FR

DE

ES



ISO Symbols

Symboles ISO

ISO Symbole

Símbolos ISO

WS 5



Foreword

Avant- propos

Vorwort

Prefacio

WS 6



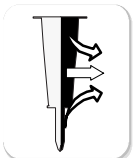
Seals package

Pochette de joints

Dichtungssatz

Bolsa de recambio

WS 7



Dismantling

Démontage

Demontage

Desmontaje

WS 8 ↗
WS 16



Repairing

Réparation

Reparatür

Reparacion

WS 17 ↗
WS 26



Assembling

Montage

Montage

Montaje

WS 27 ↗
WS 38

MONTABERT®



Energy chamber

**Réservoir
d'énergie**

Energiespeicher

**Reserva de
energia**

**WS 39 ↗
WS 40**



Tooling

Outils

Werkzeugausstattung

Herramientas

WS 41



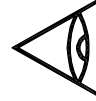
ISO 7000:2004
1640



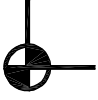
ISO 7000:2004
0790



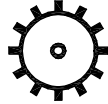
ISO 7000:2004
1659



ISO 7000:2004
0421



ISO 7000:2004
1011



ISO 7000:2004
1103



ISO 7000:2004
1104



ISO 7000:2004
1366



ISO 7000:2004
0391



ISO 7000:2004
1309



ISO 4063
135- S
ISO 7000:2004
0461



M004



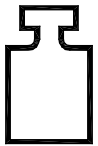
M003



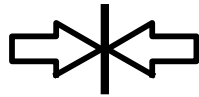
M014



M010



ISO 7000:2004
1321



ISO 7000:2004
0018



ISO 7000:2004
0019



M009



M008



ISO 7010:2003
W001
ISO 7000:2004
0434



ISO 7010:2003
P001



ISO 7010:2003
W017



M015



M002

ISO 7010:2011



ISO 7000:2004
1682



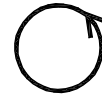
ISO 7000:2004
1683



ISO 7000:2004
0918



ISO 7000:2004
0258



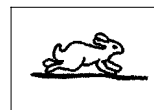
ISO 7000:2004
0937



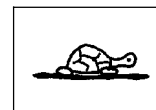
ISO 7000:2004
0423



ISO 7000:2004
0870



ISO 6405-1:2004
7.41



ISO 6405-1:2004
7.42





FOREWORD

The contents of this manual are considered to be proprietary and confidential for the manufacturer and should not be reproduced without the prior written permission of the manufacturer.

Nothing contained in this document is intended to extend any promise, warranty or representation, expressed or implied regarding the manufacturer products described here in. Any such warranties or other terms and conditions of sale of products shall be in accordance with the standard terms and conditions of sale of such products, which are available upon request.

The design specification of this machine has been certified as complying with E.U. directives. Any modification to any part is absolutely prohibited and will result in the CE certification and marking being rendered invalid.

The manufacturer reserves the right to make changes and improvements to products without notice and without incurring any obligation to make such changes or add such improvements to products sold previously.

VORWORT

Der Inhalt dieser Betriebsanleitung ist Eigentum des Herstellers und darf nicht ohne schriftliche Genehmigung durch den Hersteller vervielfältigt werden.

Die in dieser Anleitung enthaltenen Angaben berechtigen nicht zu irgendwelchen Forderungen betreffend der hier beschriebenen des Herstellers Produkte. Alle Garantien, sonstige Absprachen und Verkaufskonditionen werden in Übereinstimmung mit den allgemeinen Verkaufs- u. Lieferbestimmungen von dem Hersteller getroffen, die auf Wunsch gerne zur Verfügung gestellt werden.

Die Konstruktionsdaten dieses Gerätes sind als den EG- Vorschriften entsprechend bescheinigt. Änderungen an Teilen und Baugruppen sind streng verboten und führen zur Ungültigkeit der CE- Zulassung und Kennzeichnung.

Der Hersteller behält sich das Recht vor, Änderungen und Verbesserungen an seinen Produkten ohne Vorankündigungen durchzuführen. Seitens besteht dem Hersteller keine Verpflichtung solche Änderungen und Verbesserungen an bereits verkauften und gelieferten Produkten nachträglich vorzunehmen.

AVANT- PROPOS

Le contenu de ce manuel est considéré comme appartenant au fabricant et comme confidentiel, il ne doit pas être reproduit sans l'autorisation écrite préalable du fabricant.

Aucun élément du contenu de ce document n'est entendu comme représentant une quelconque promesse, garantie ou représentation, ni explicite, ni implicite, eu égard aux produits du fabricant qui y sont décrits.

Toute garantie de cette nature ou tout autre terme ou condition de vente des produits, doivent être conformes aux termes et conditions standards de vente du fabricant, termes et conditions que l'on pourra obtenir sur demande

Les spécifications de cet appareil ont été homologuées comme étant conformes aux directives de l' U.E . Toute modification d'une pièce quelconque est absolument interdite et aurait pour conséquence l'invalidation de l'homologation CE

Le fabricant se réserve le droit d'apporter des modifications ou d'ajouter des perfectionnements aux produits sans préavis et sans encourir en quoi que ce soit l'obligation d'apporter de telles modifications ni d'ajouter de tels perfectionnements aux produits vendus antérieurement

PREFACIO

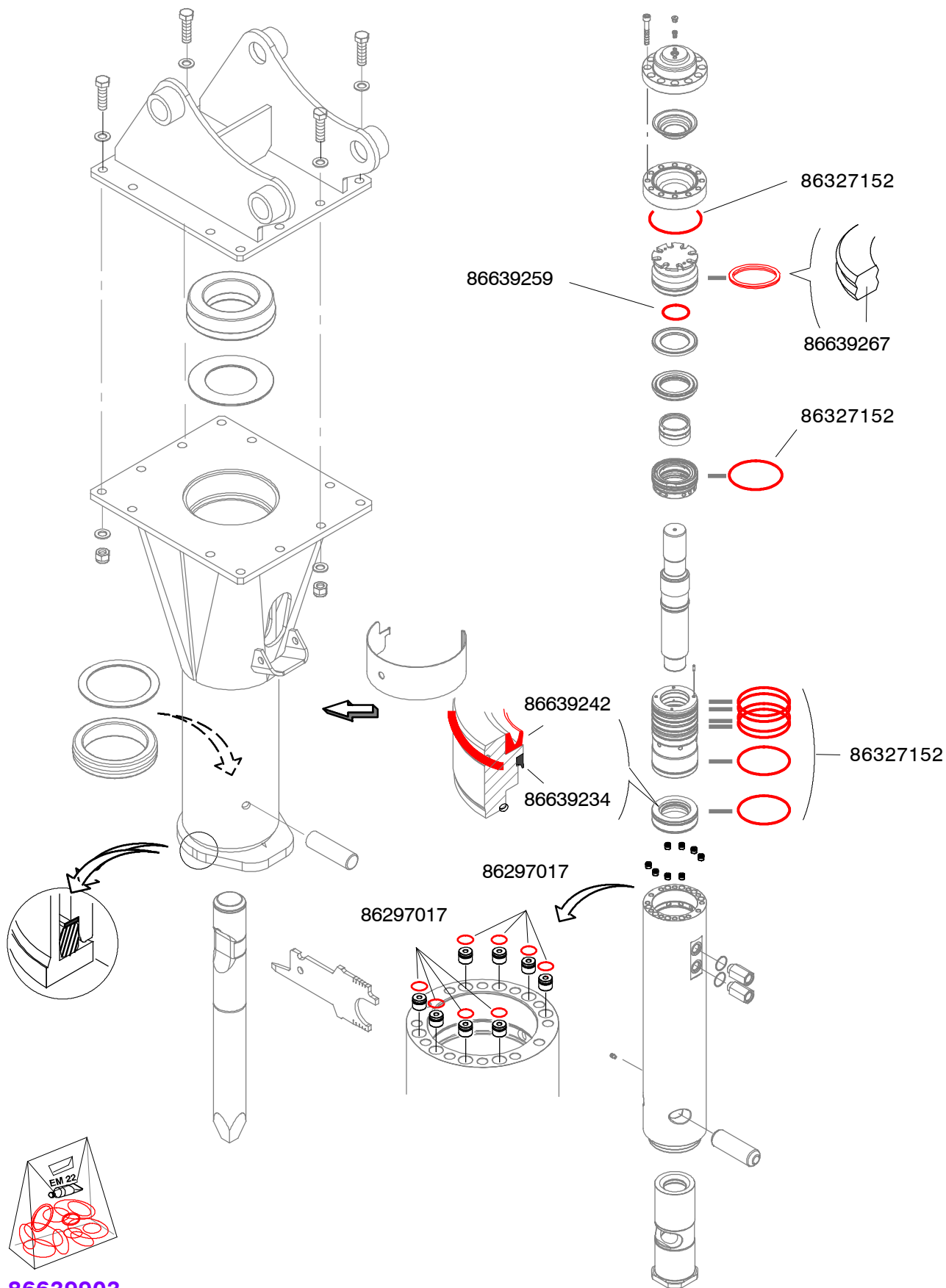
El contenido de este manual es considerado como propiedad del fabricante y como confidencial, no tiene que ser reproducido sin la autorización escrita del fabricante.

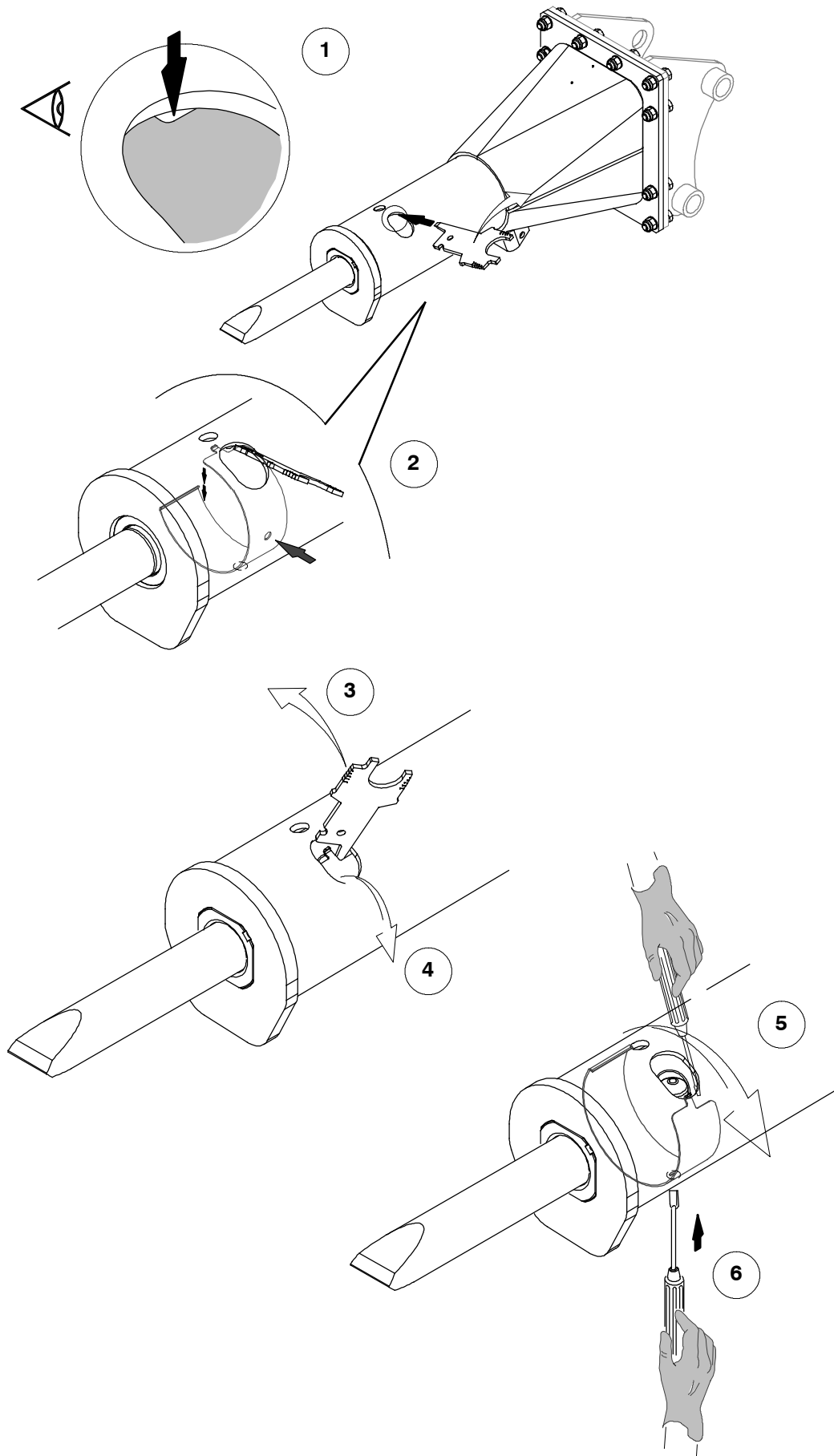
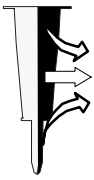
Ningún elemento del contenido de este documento esta considerado como promesa, garantía o representación de las productos del fabricante que están describiendos. Todas garantías de estas naturas o de todas otras formas o condiciones de ventas de los productos, tienen que ser conformas a los terminos y condiciones estándar de venta del fabricante. Los terminos y condiciones se pereden obtener por pedida.

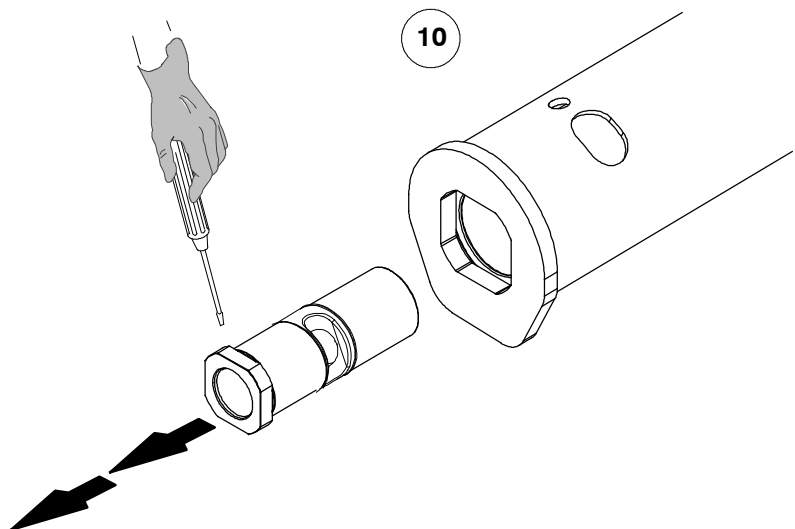
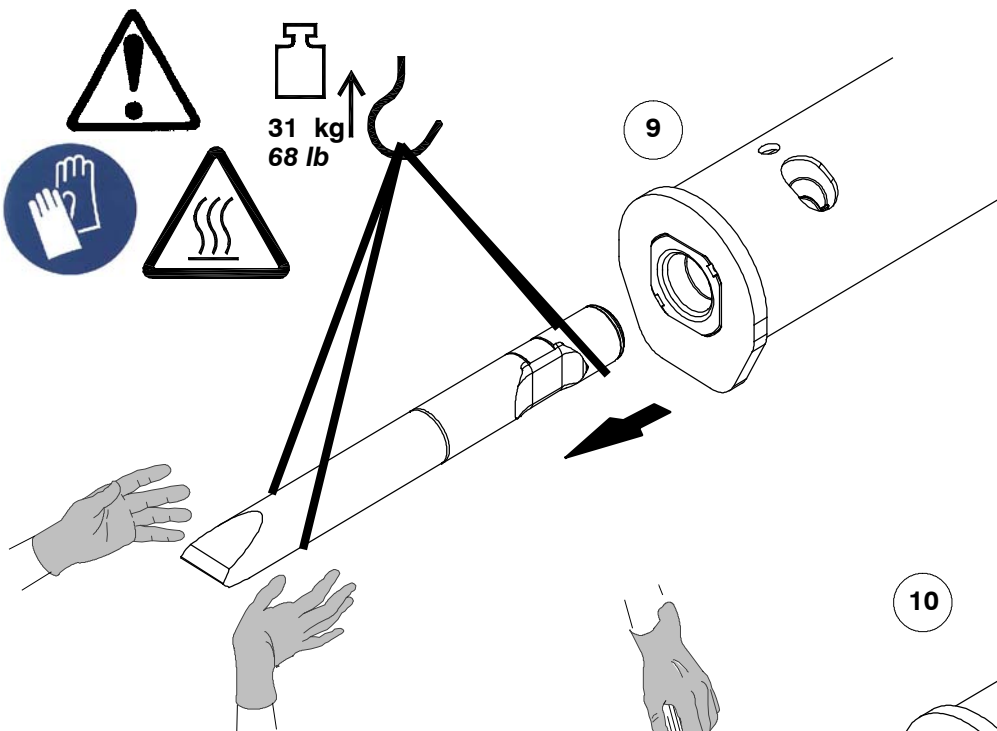
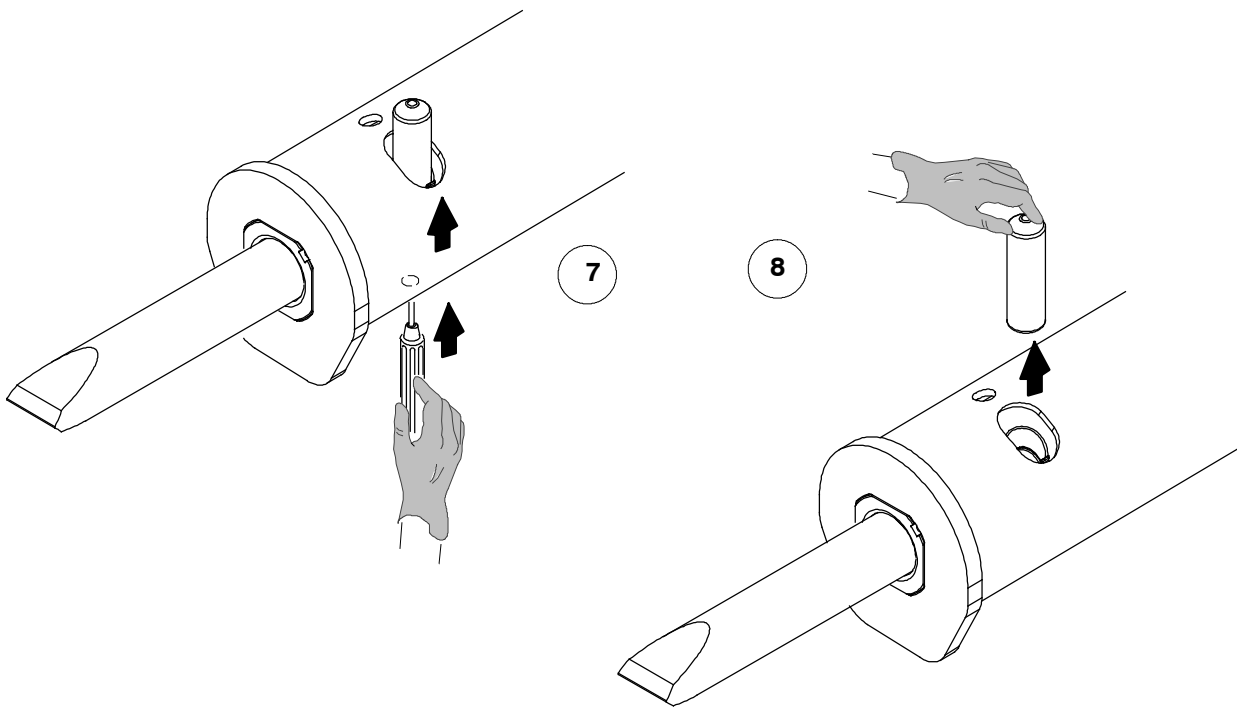
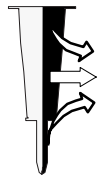
Las especificaciones de este aparato están homologados conformas a las directivas de la U.E. Toda modificación de cualquier piezas esta prohibido y tendrá por consecuencia la invalidación de la homologación C.E.

El fabricante se reserva el derecho de hacer modificaciones o perfeccionamientos de los productos sin advertencia y sin cualquier obligaciones de hacer los mismos modificaciones o perfeccionamientos a los productos vendidos anteriormente.





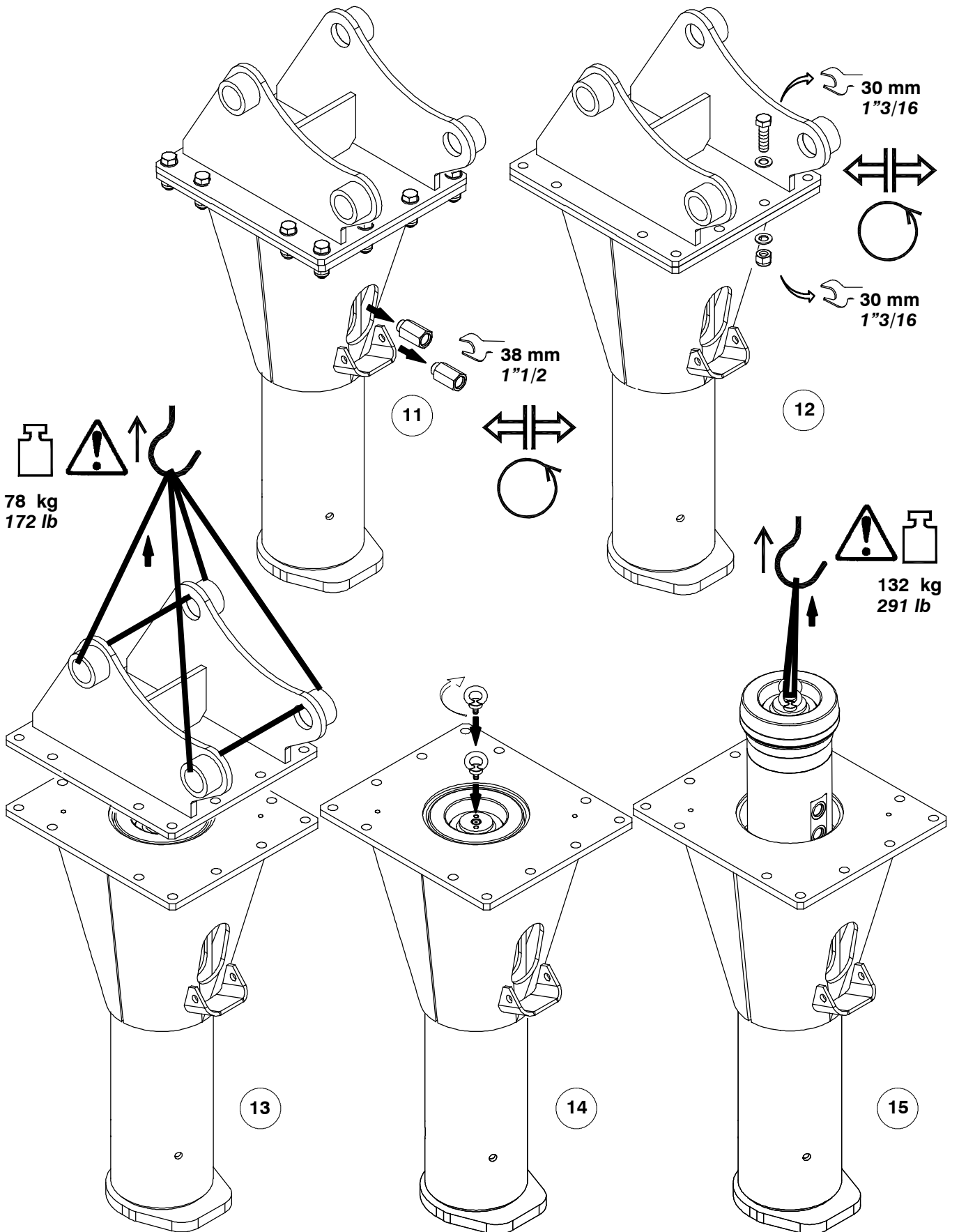
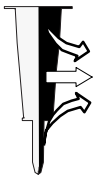


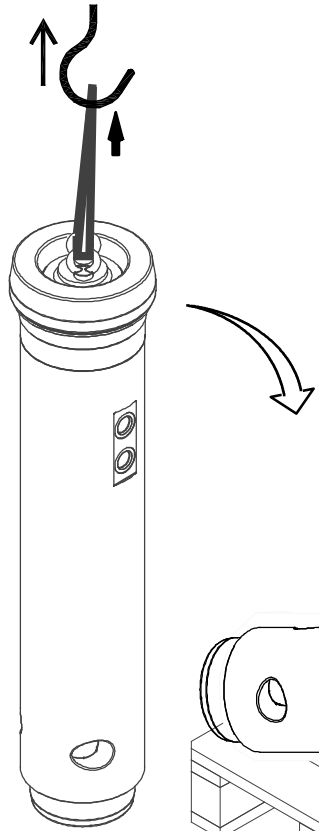
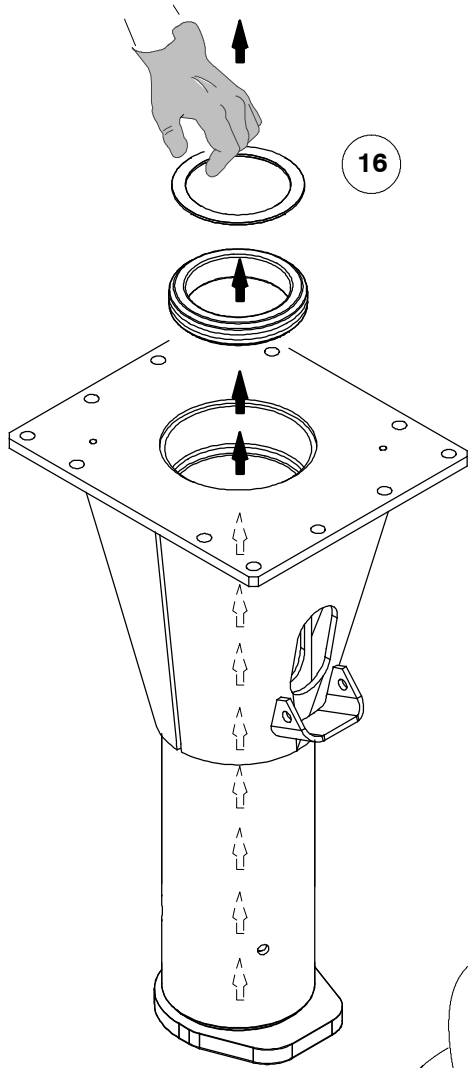



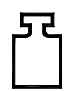
SC 36
86695996

WS 9

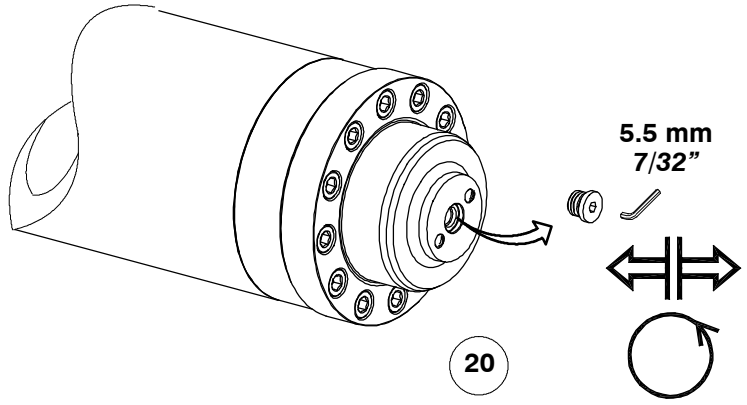
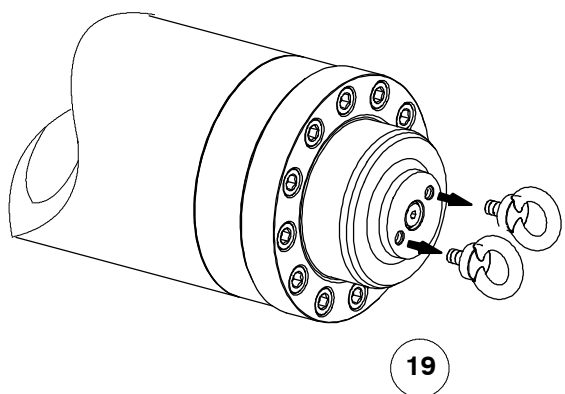
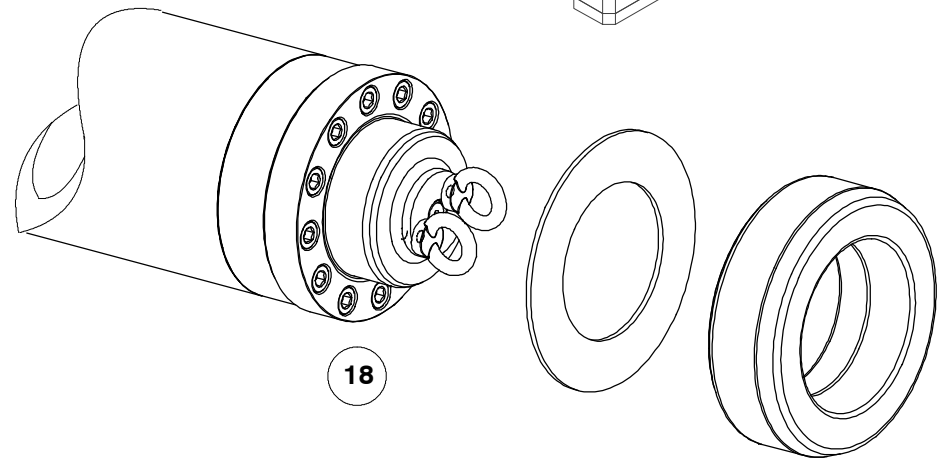
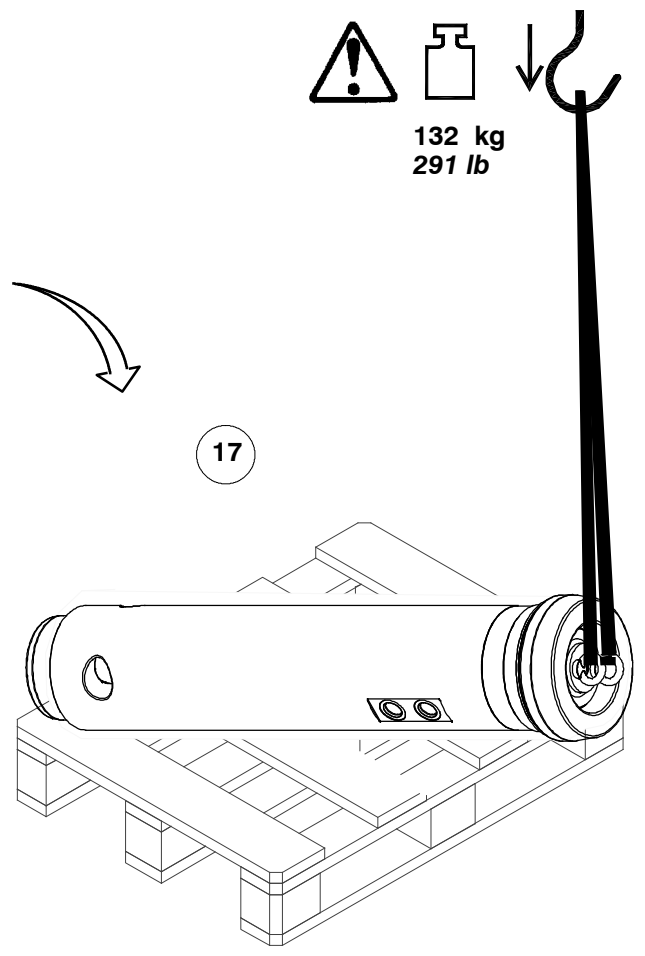
MONTABERT®
04 / 2015

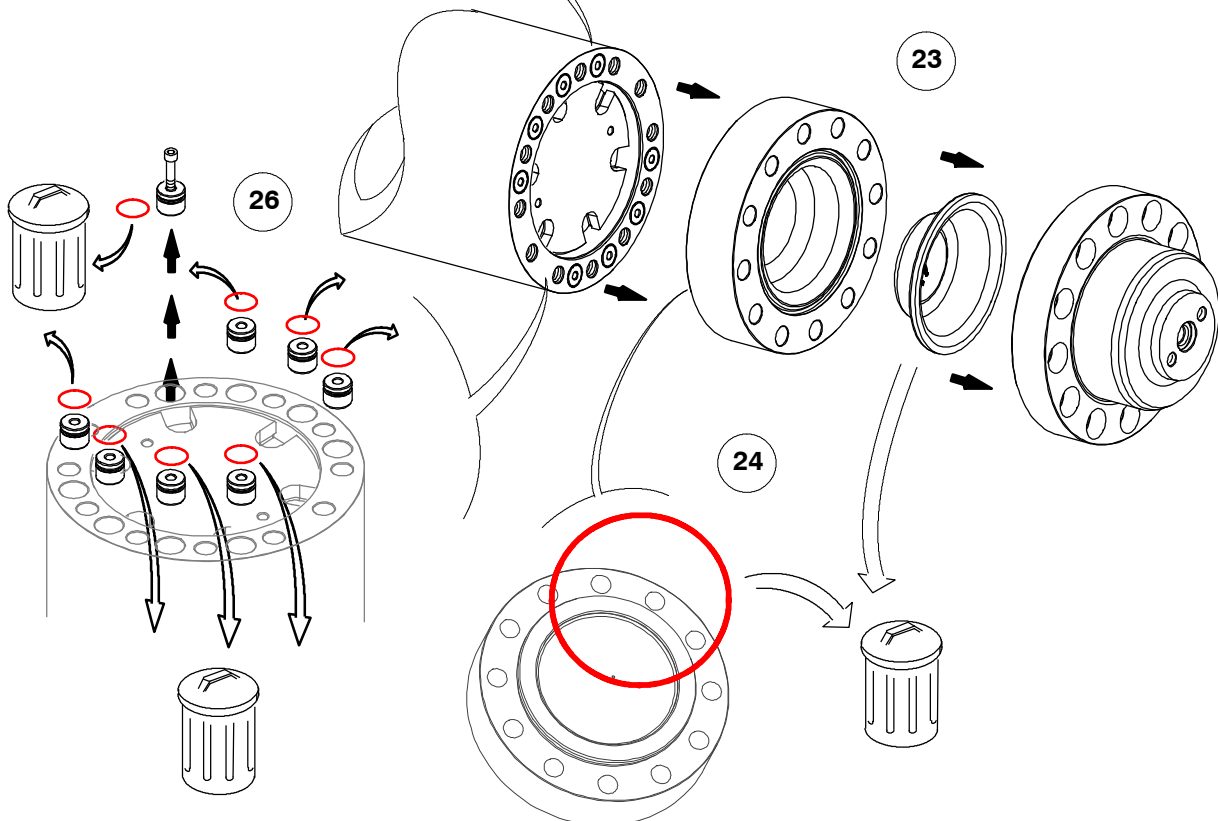
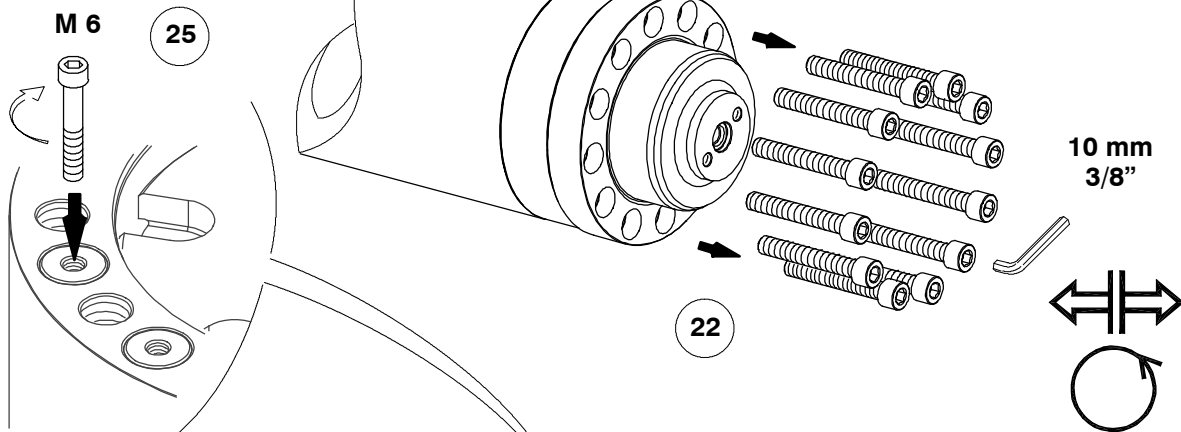
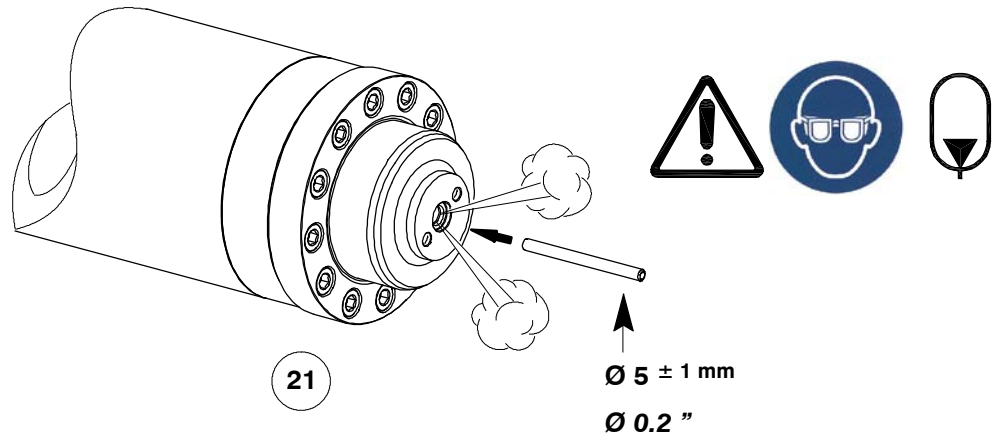
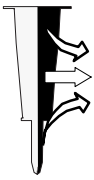


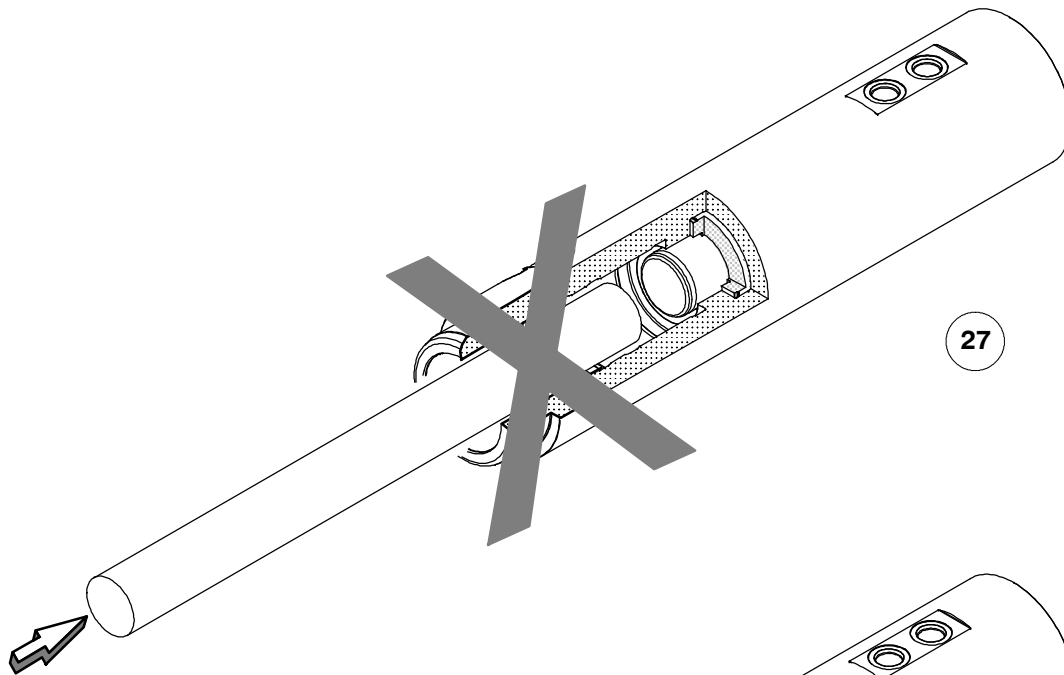
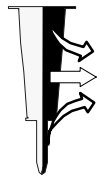


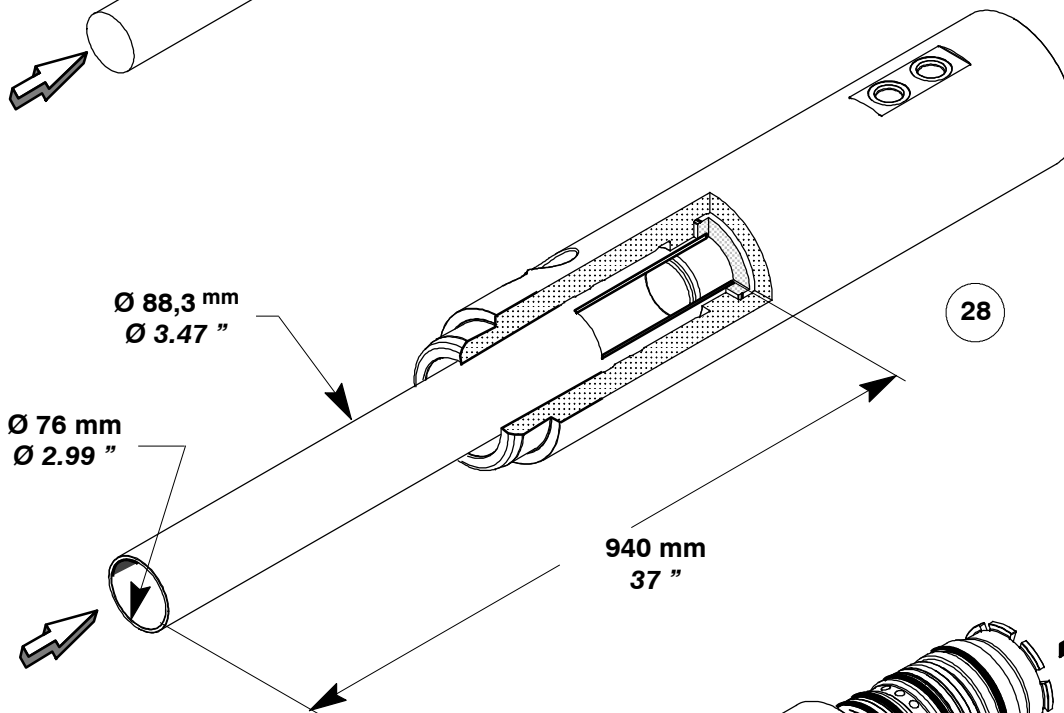
132 kg
291 lb





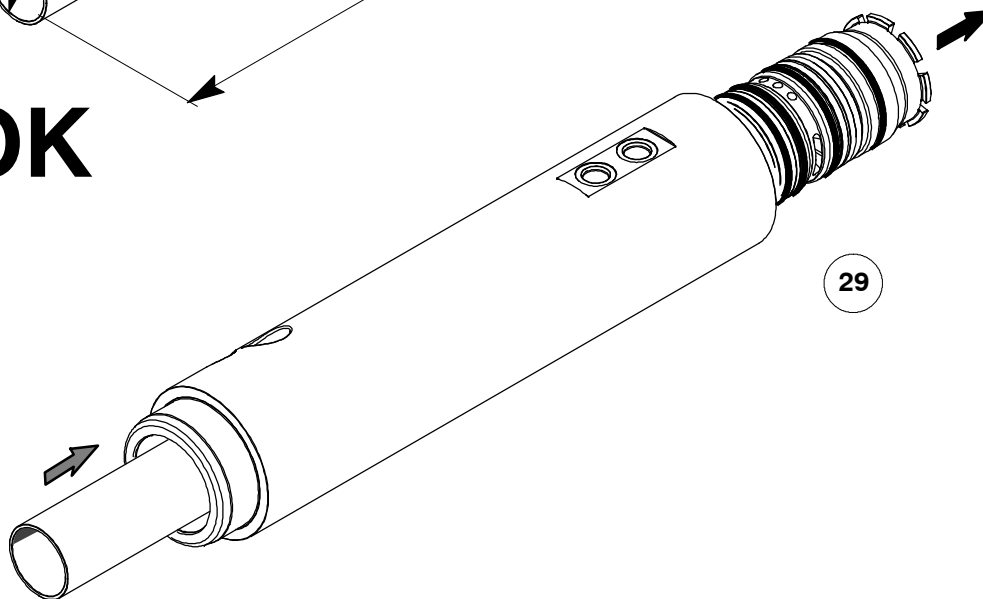


27



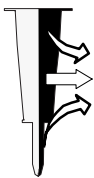
28

OK

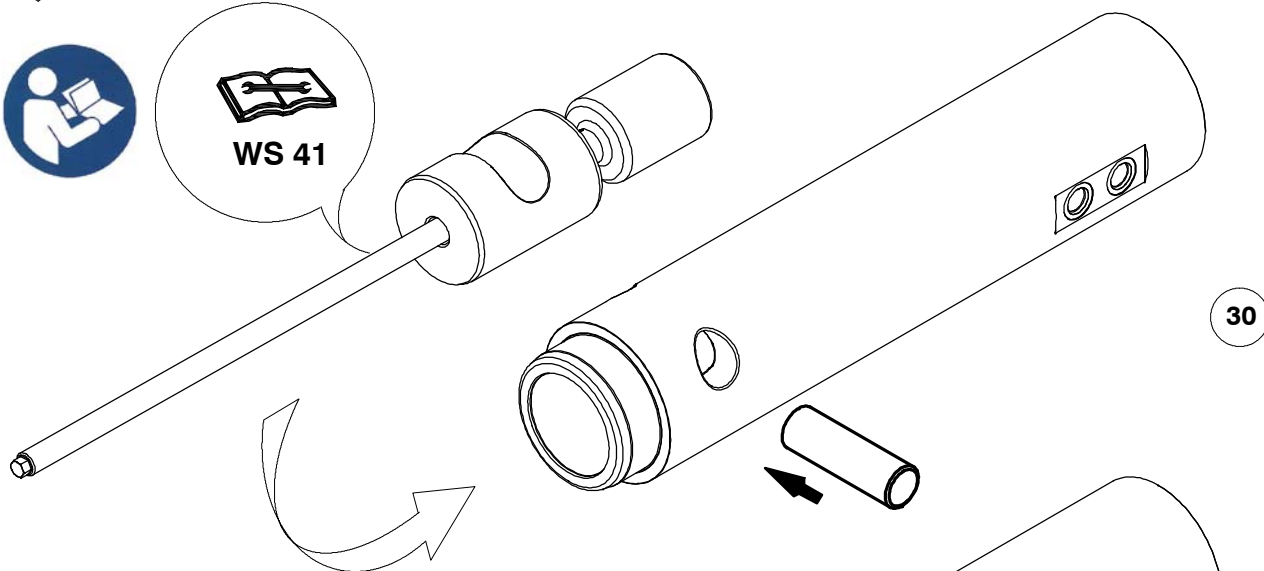


29





WS 41

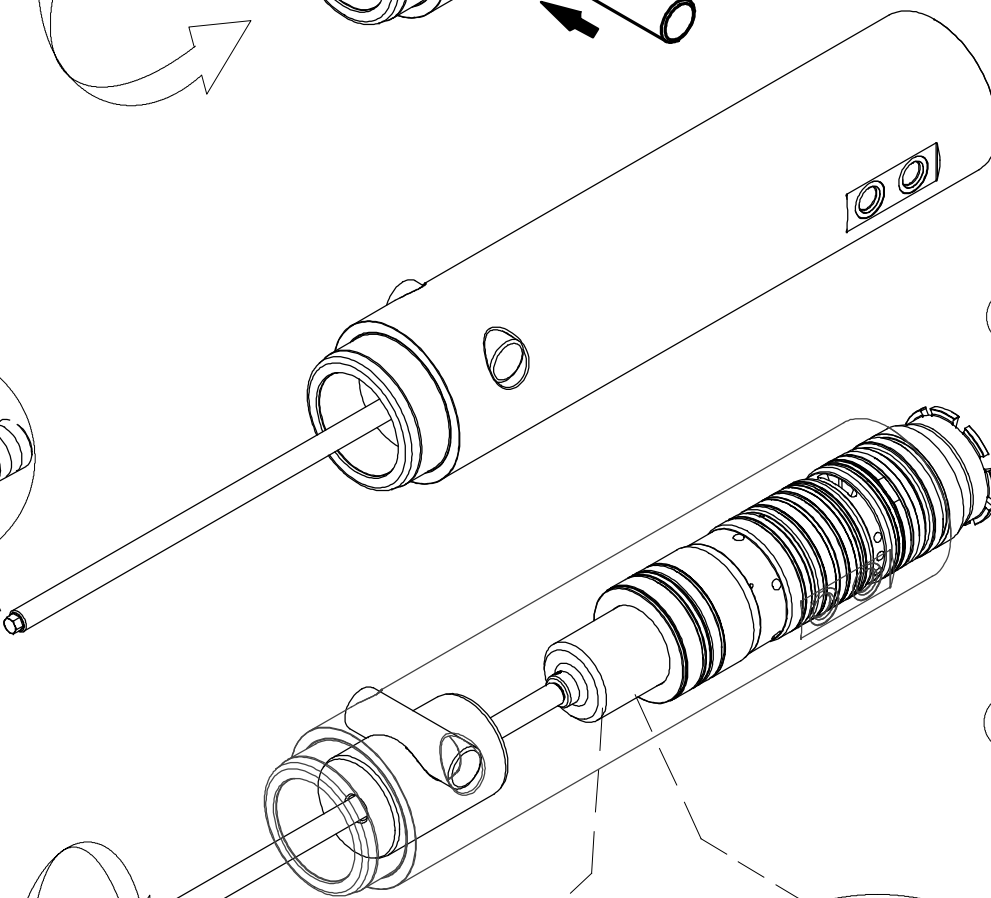


30



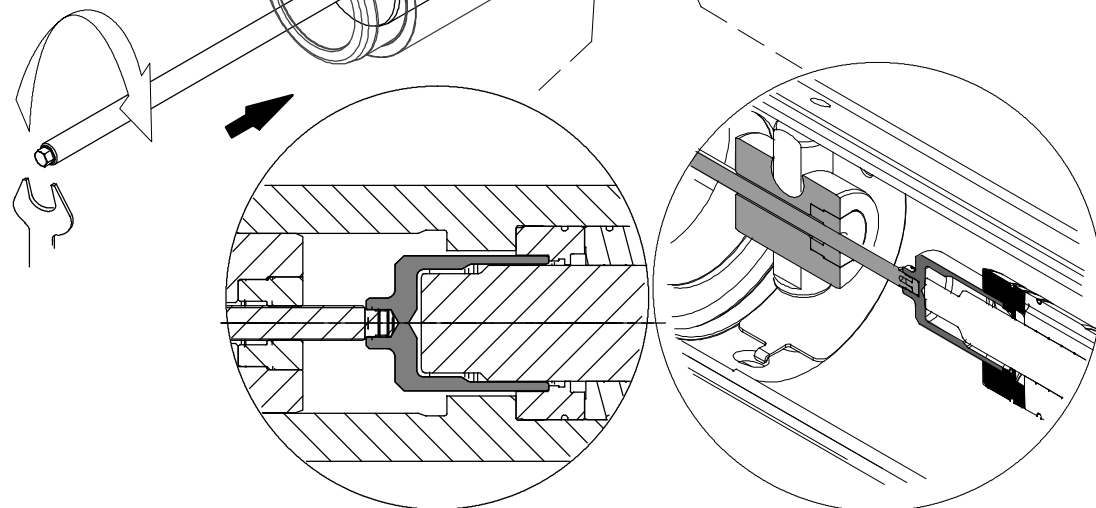
16 mm
5/8"

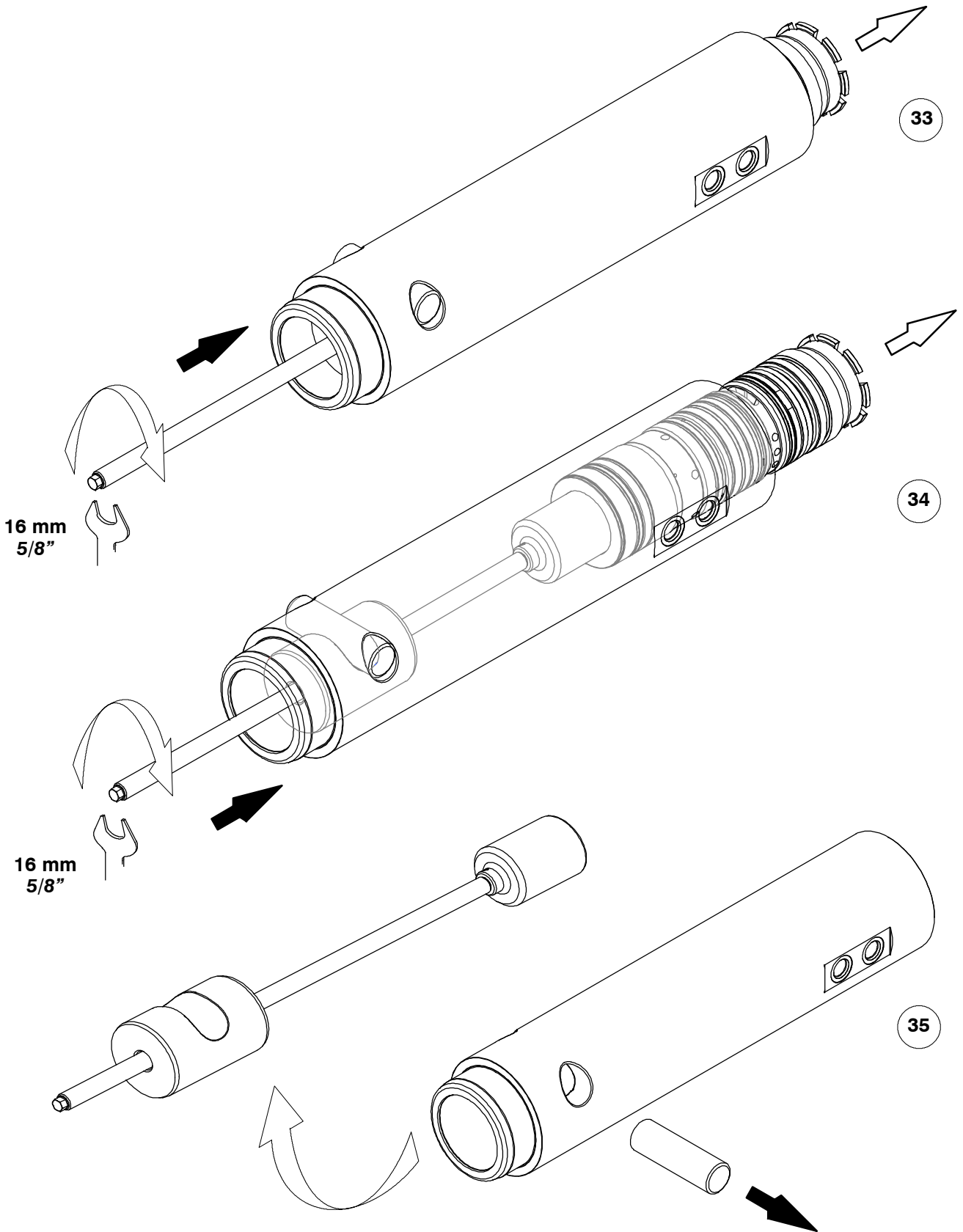
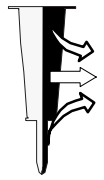
31

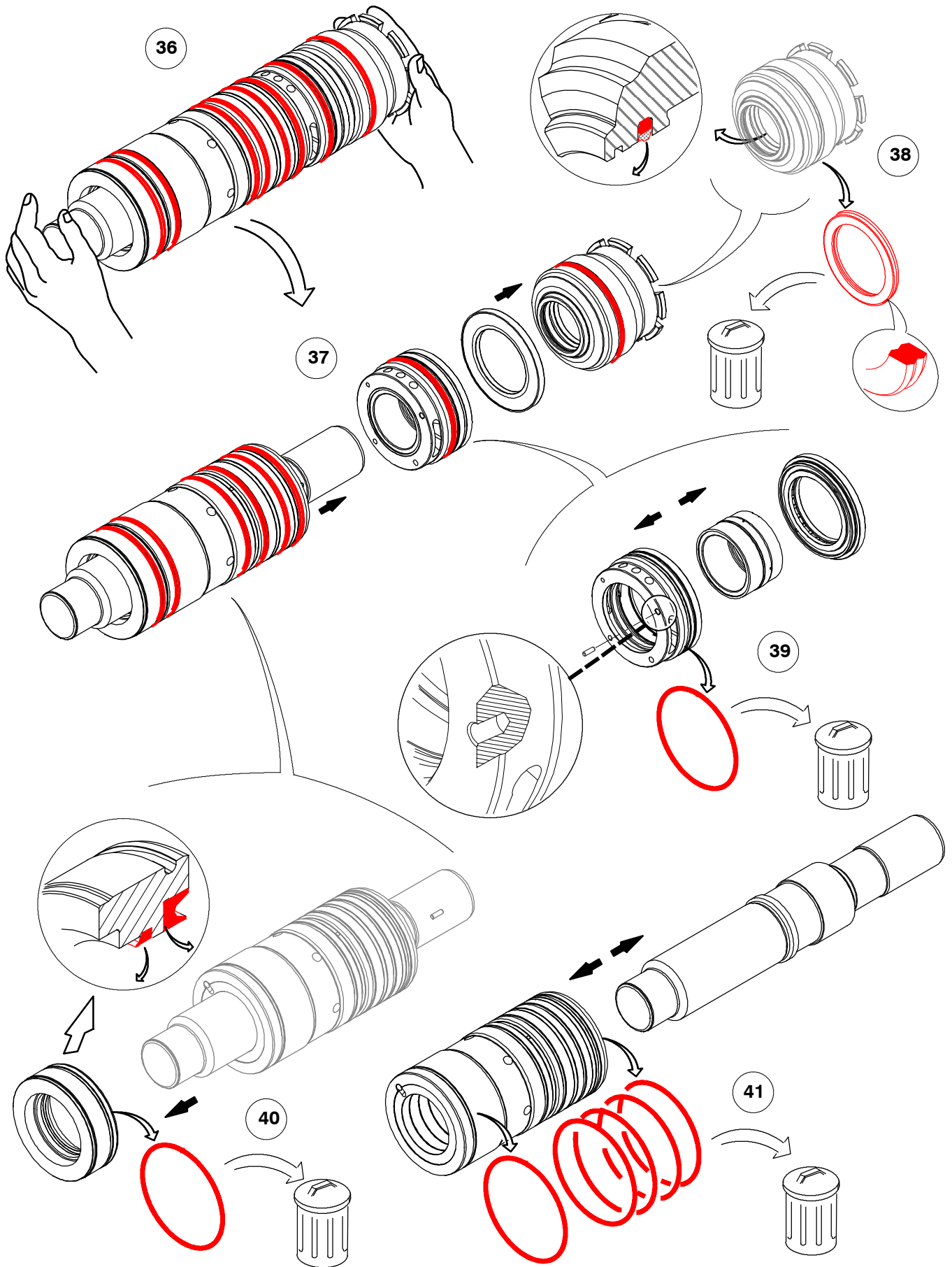
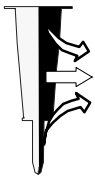


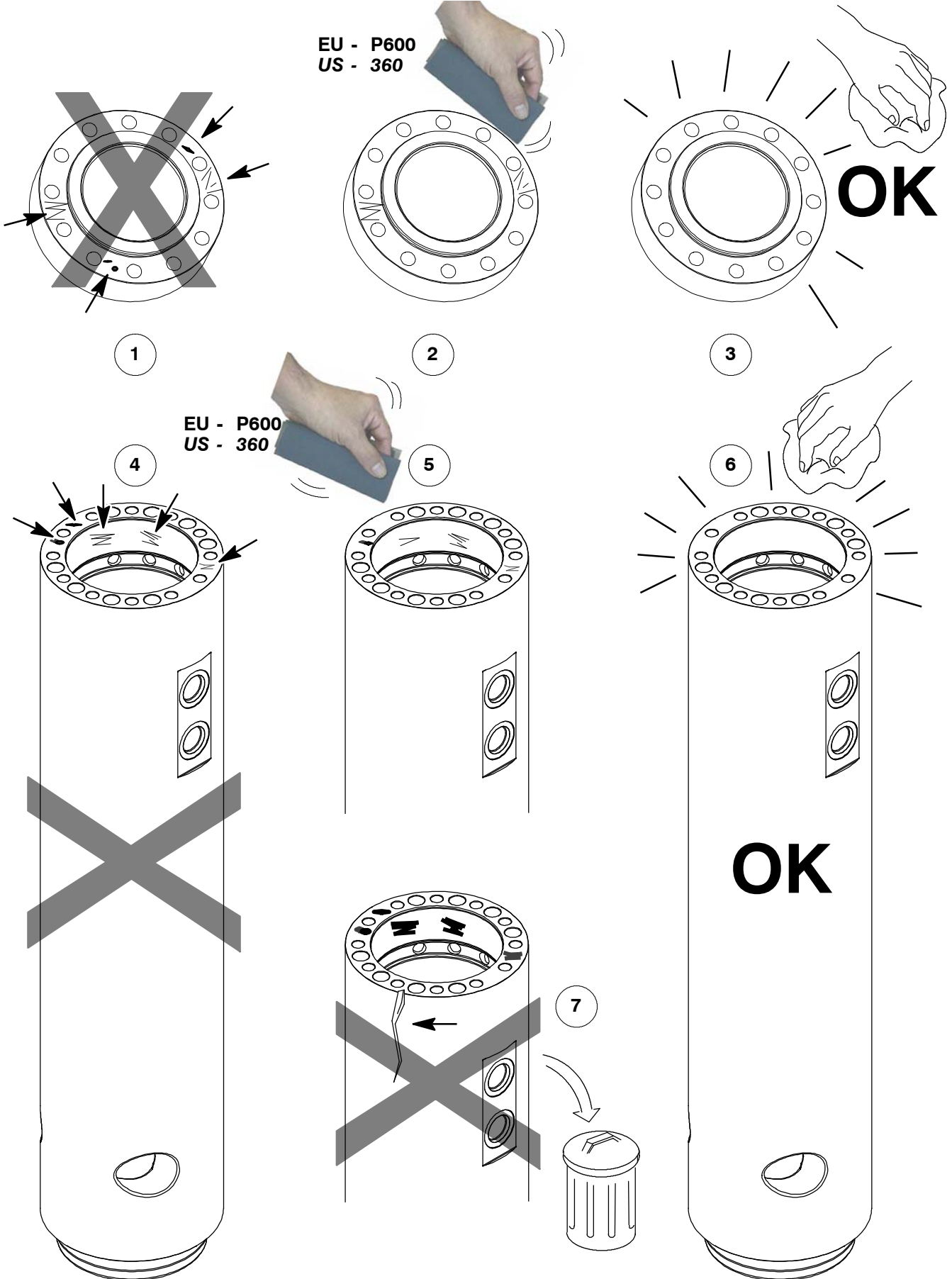
32

16 mm
5/8"



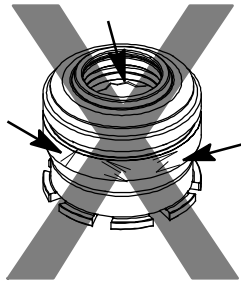








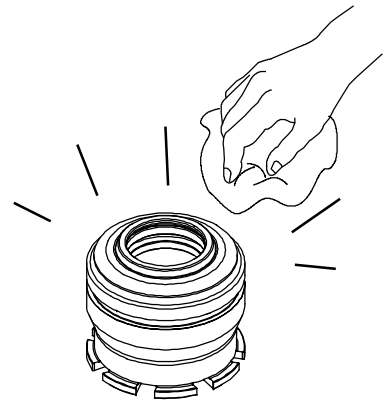
EU - P600
US - 360



8

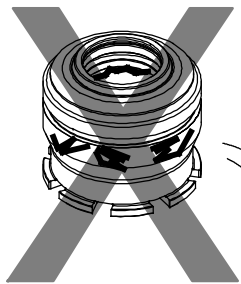


9

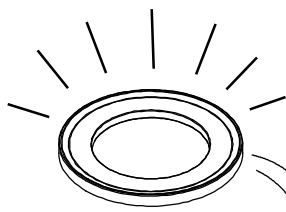
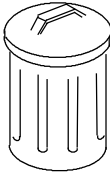


10

OK

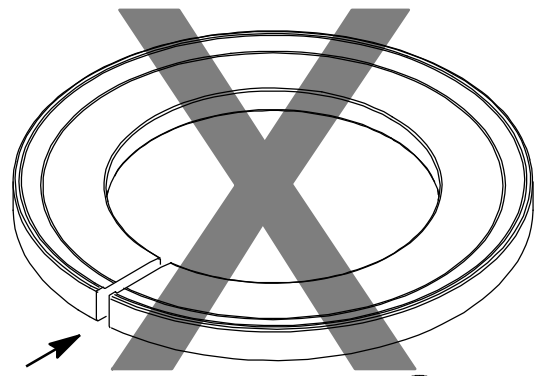


11

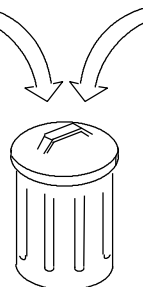


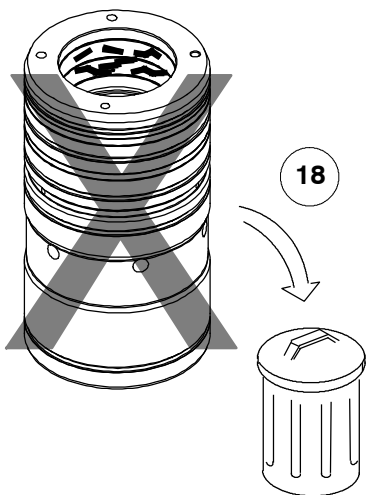
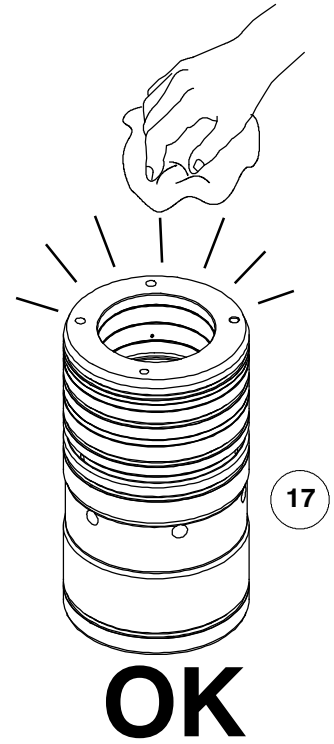
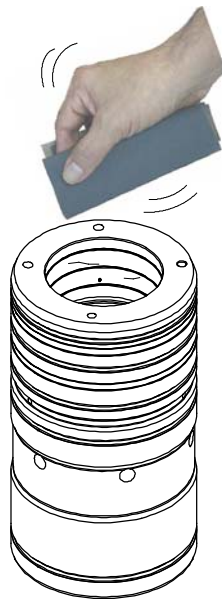
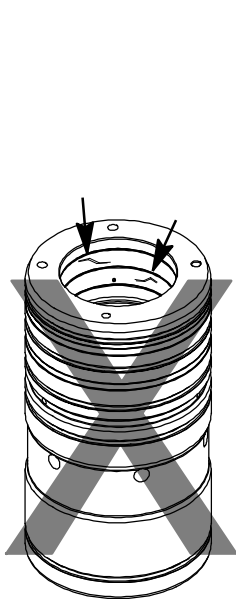
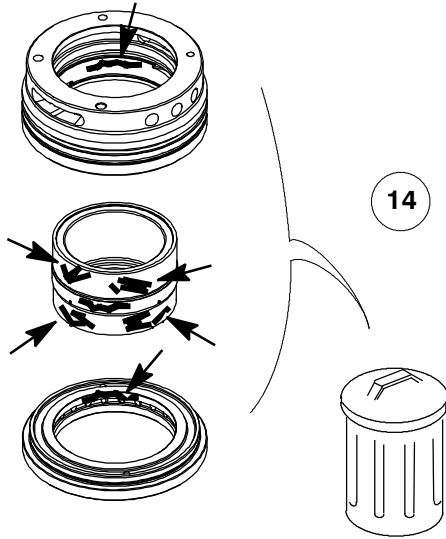
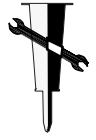
12

500 h



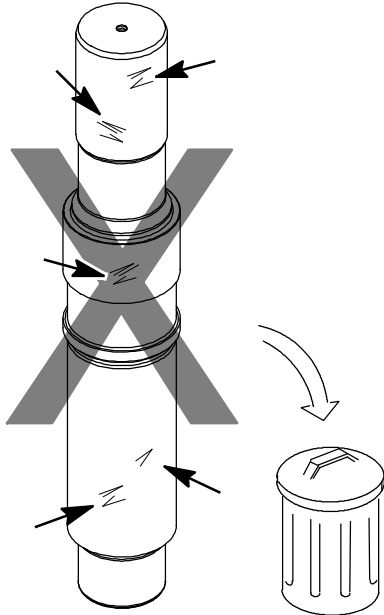
13



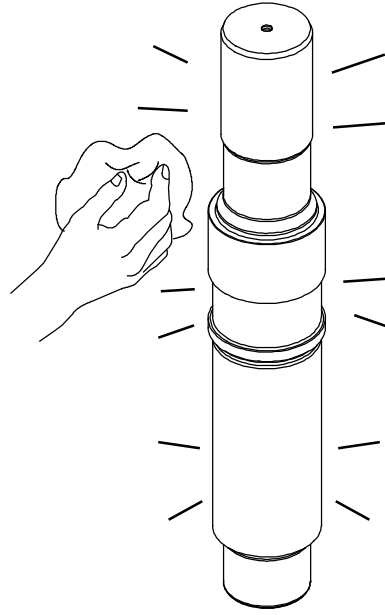




19

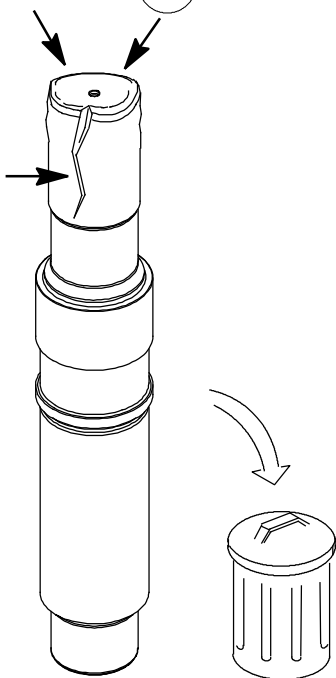


20

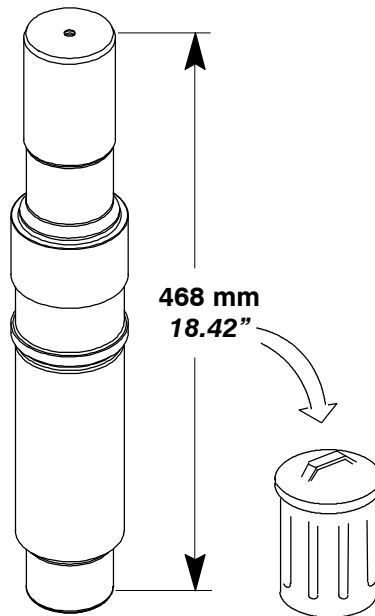


OK

21

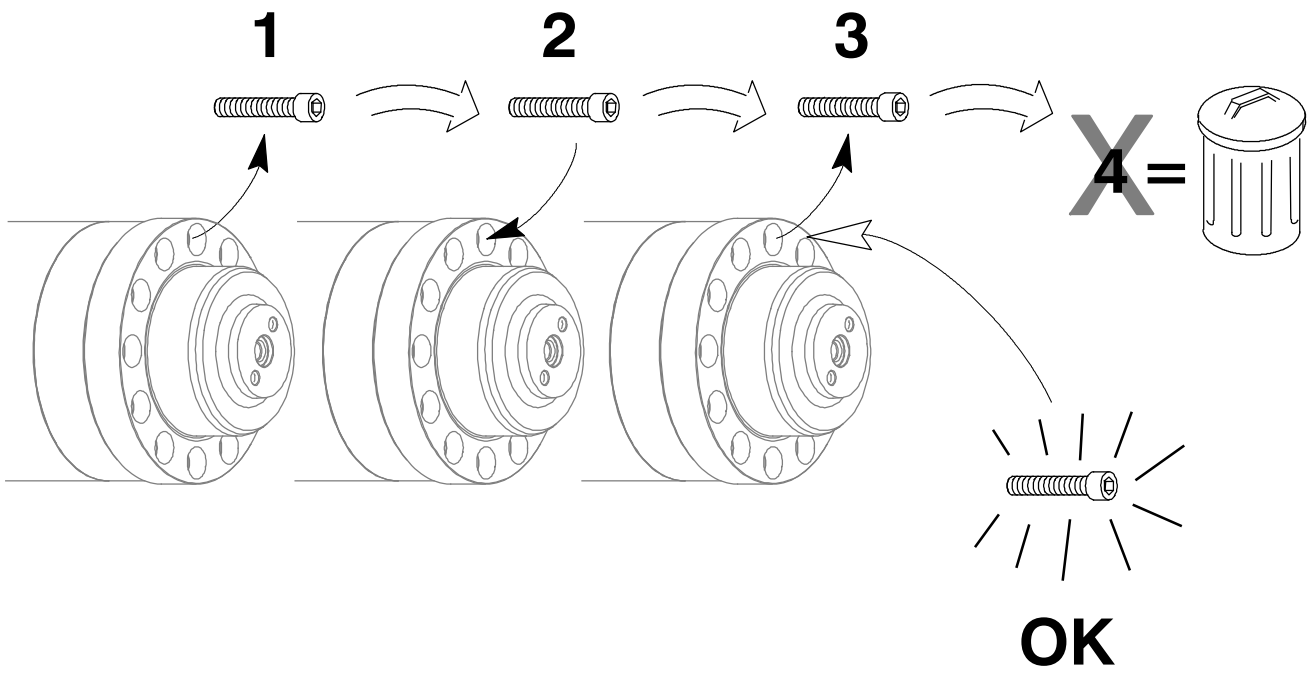


22





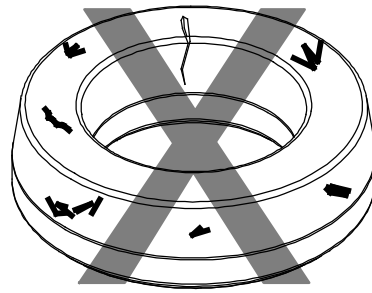
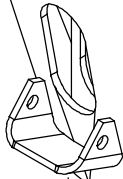
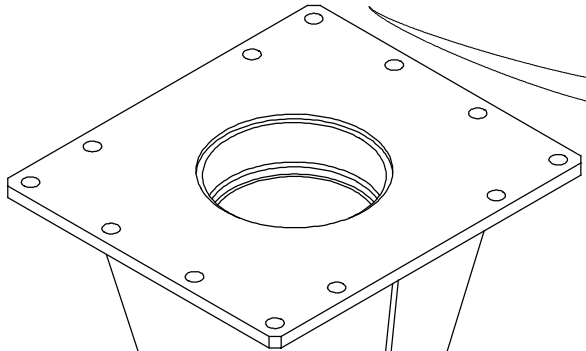
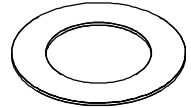
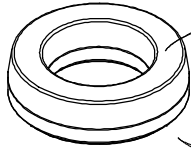
23



24

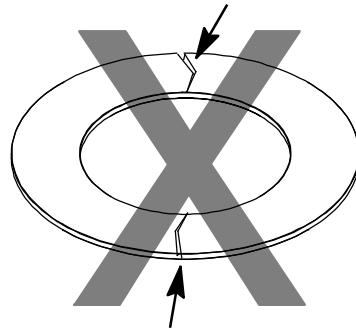


250 h

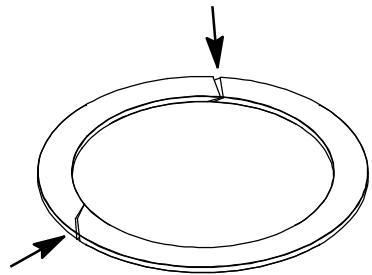
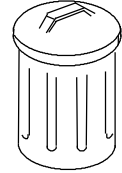


25

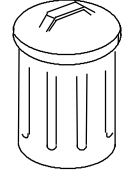
500 h



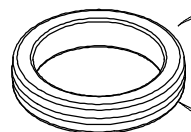
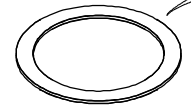
26



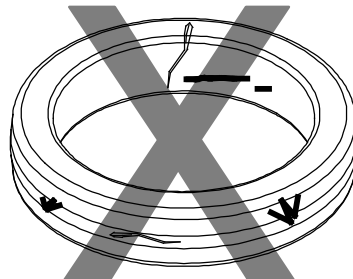
27



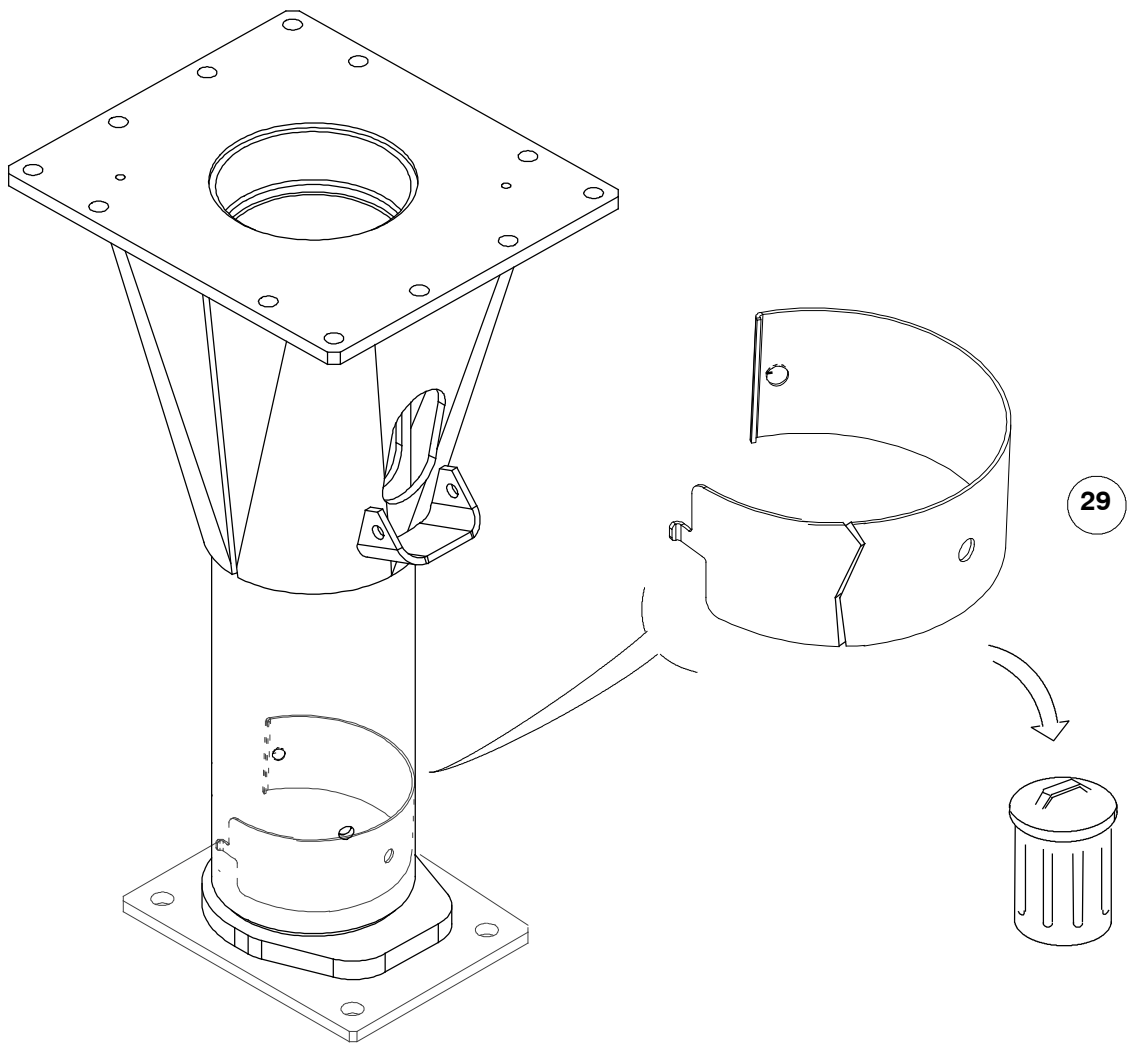
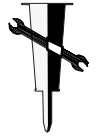
250 h



500 h



28

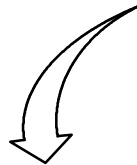
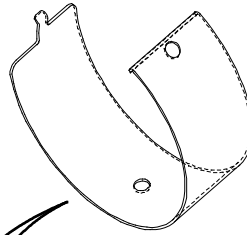




30

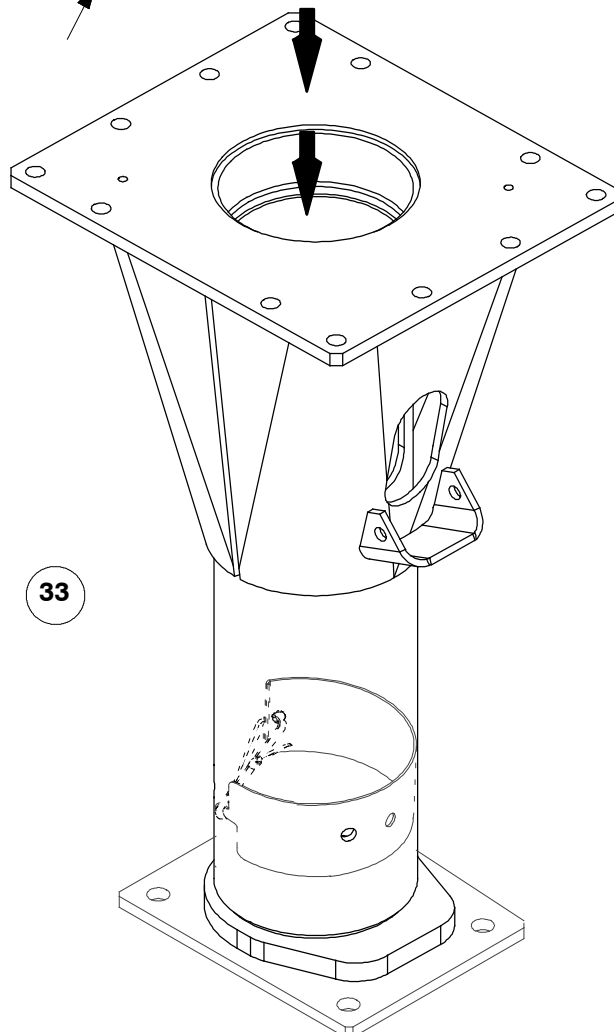
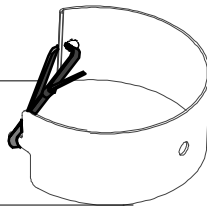


31

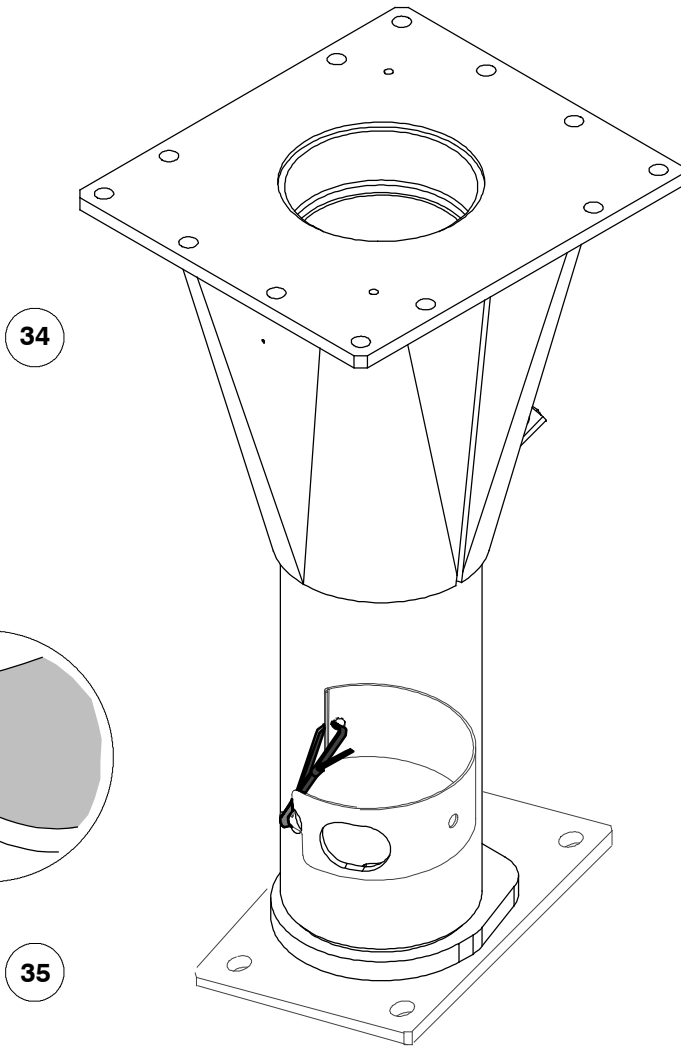
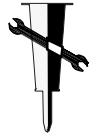


32

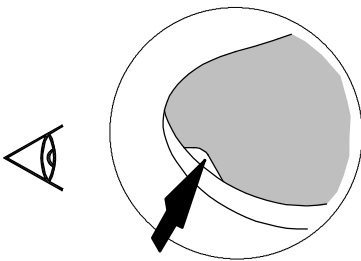
Ø 180 mm - 186mm
Ø 7.08" - 7.32"



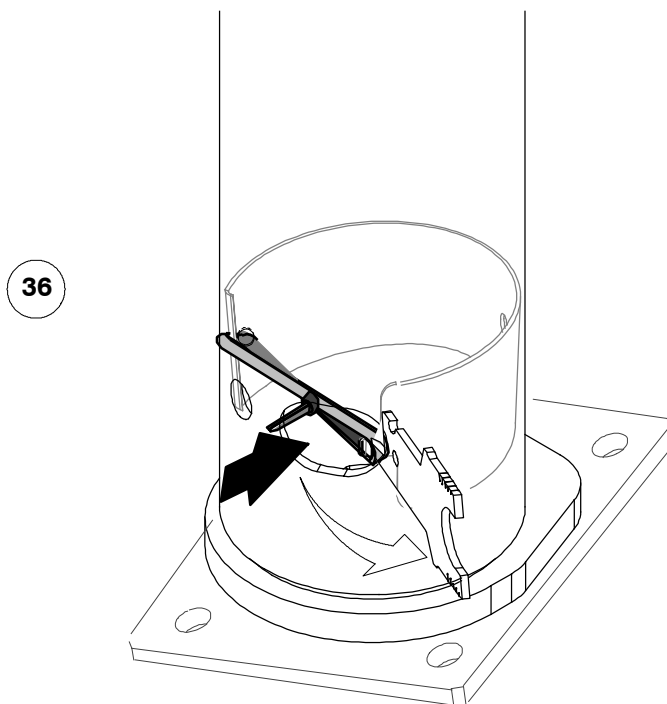
33



34



35

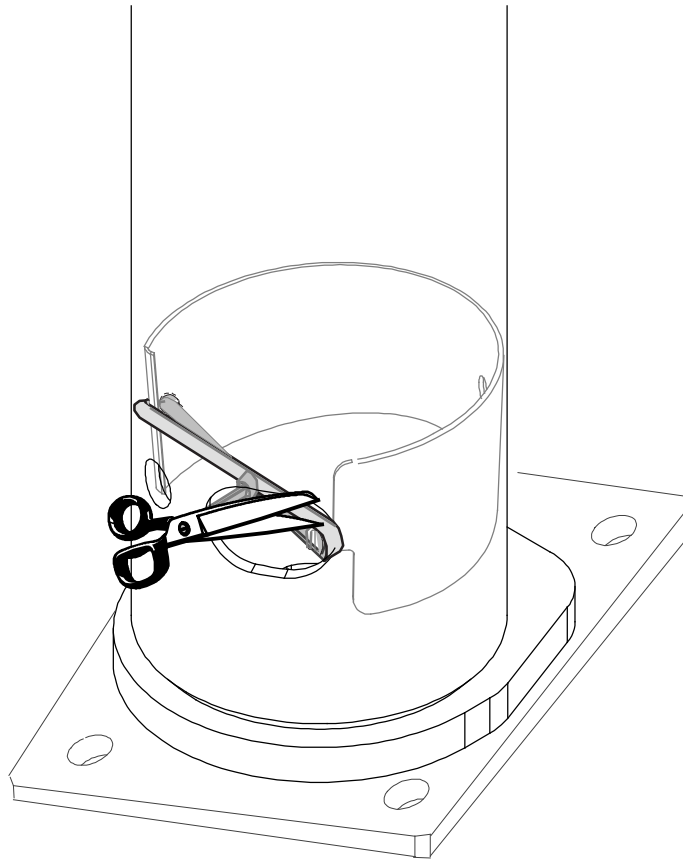


36

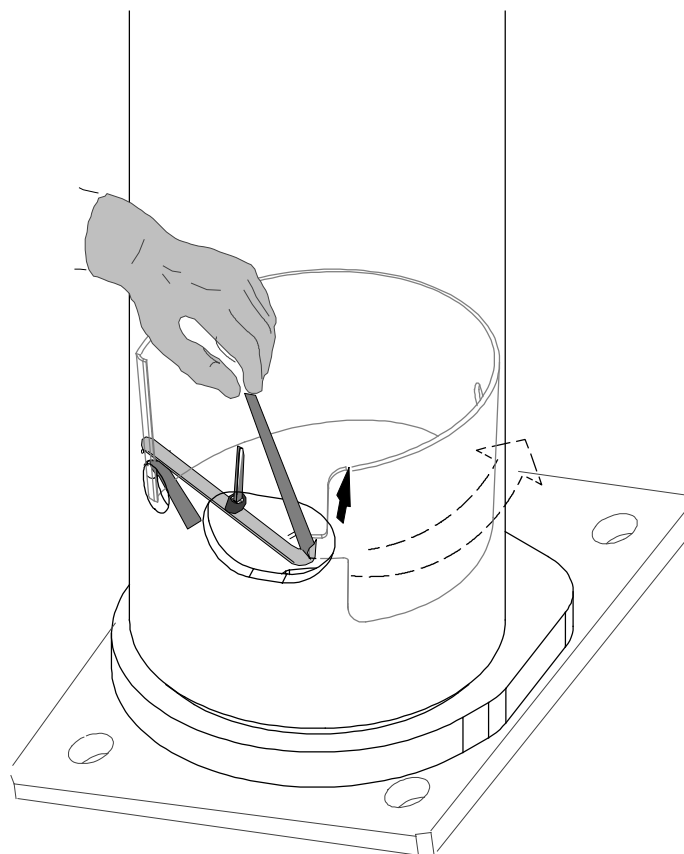


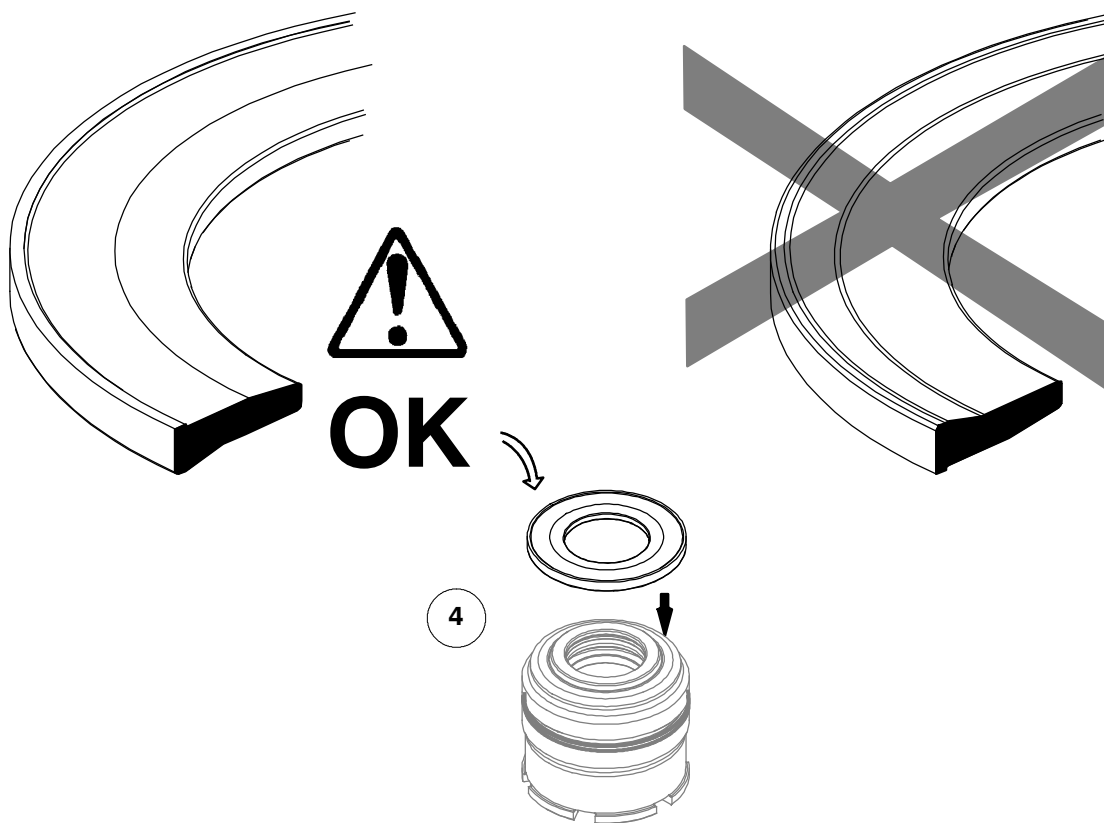
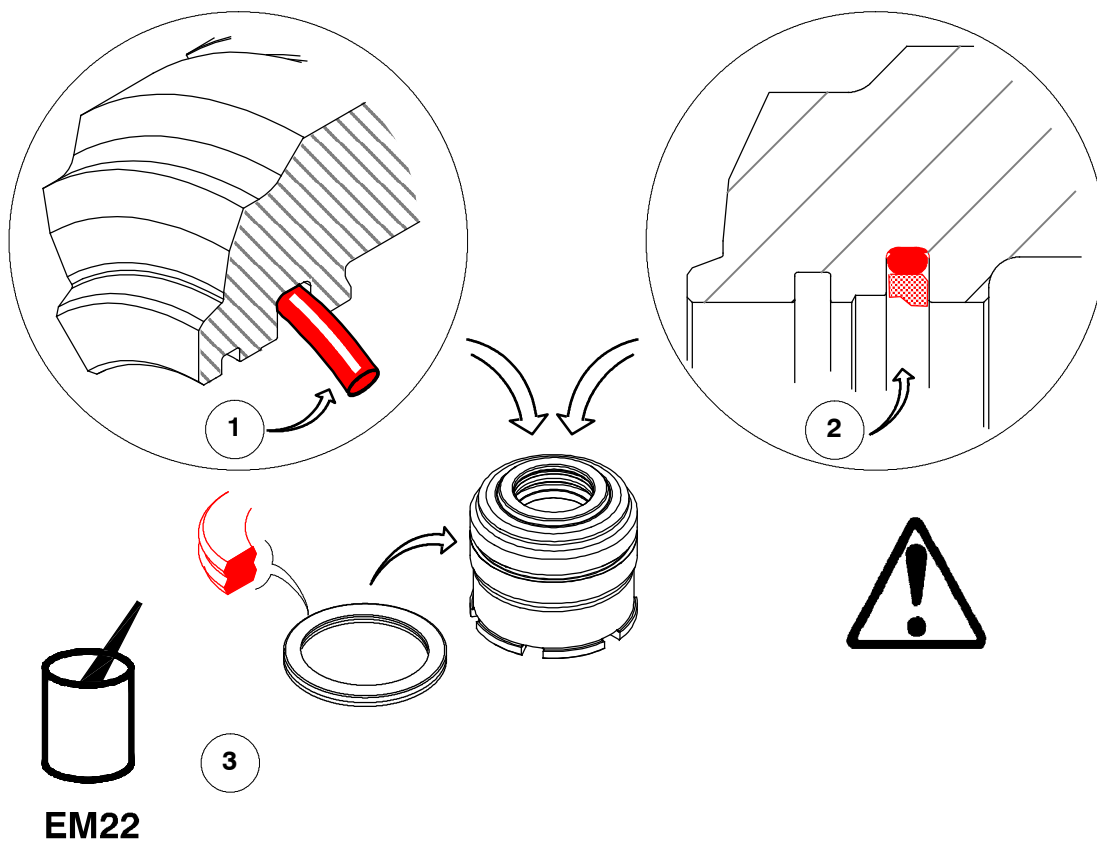


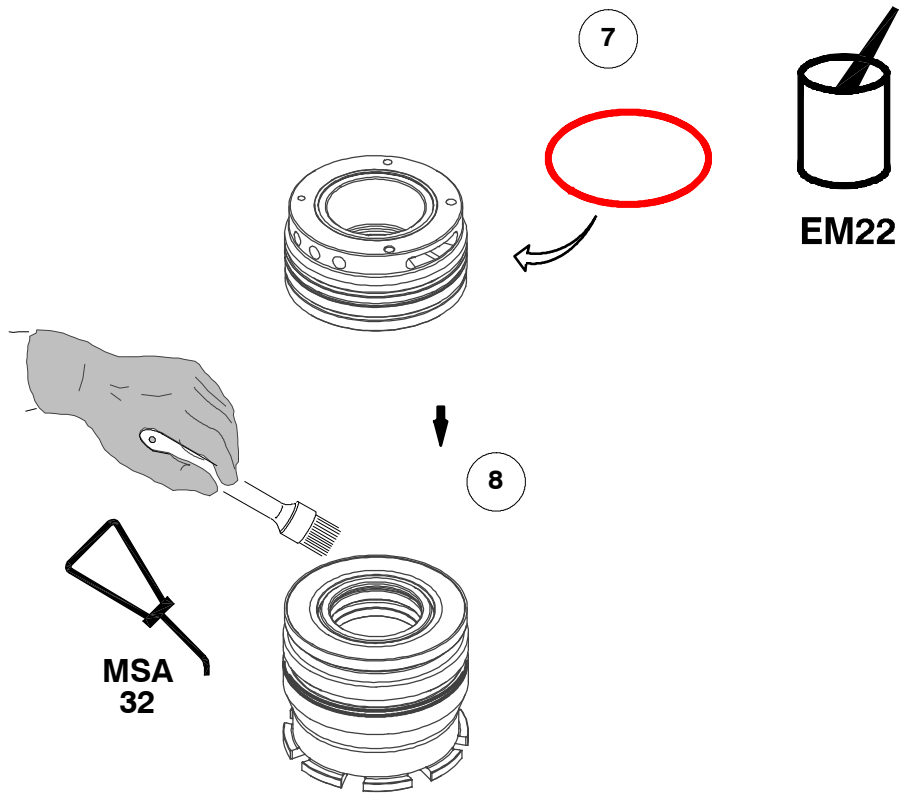
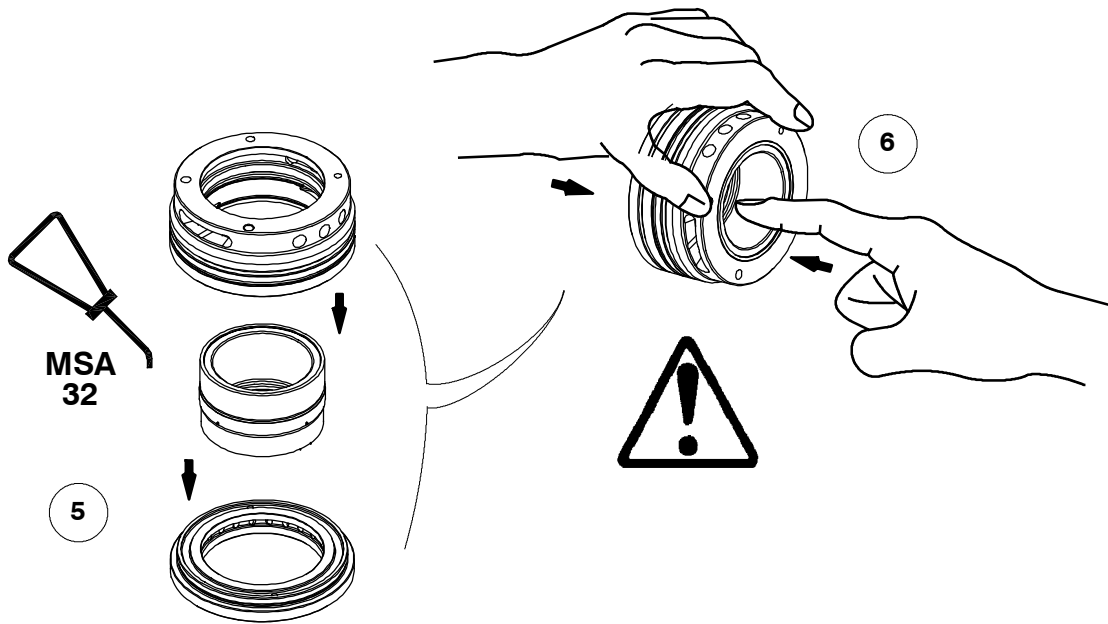
37

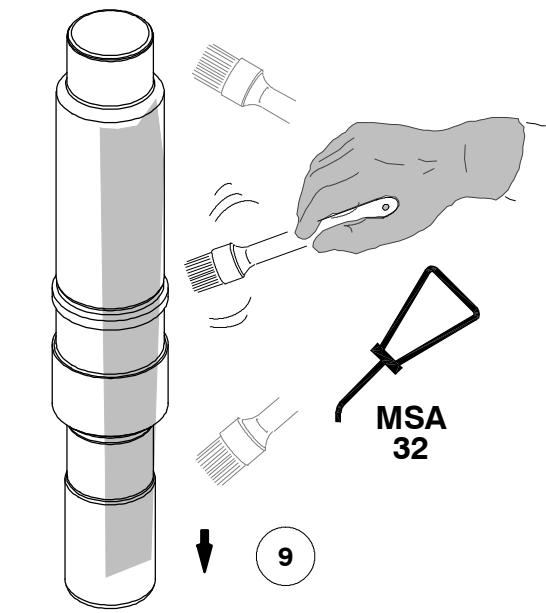


38

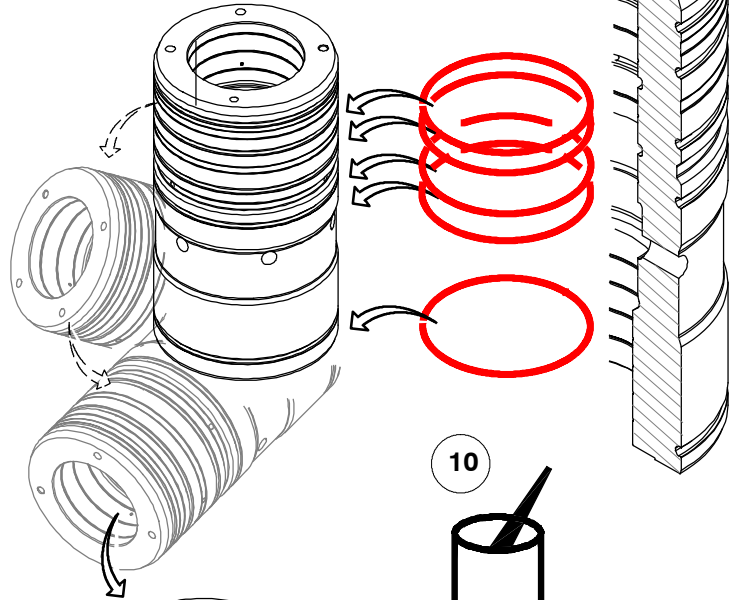
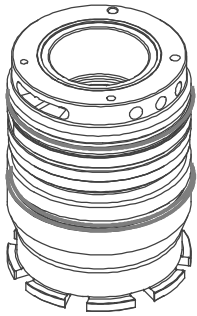






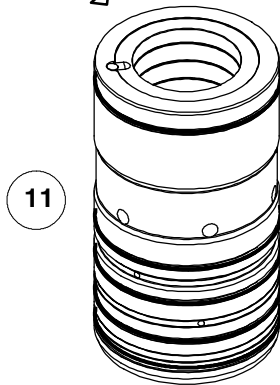


MSA
32

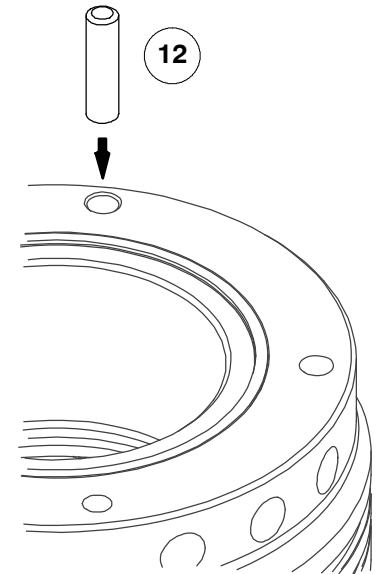
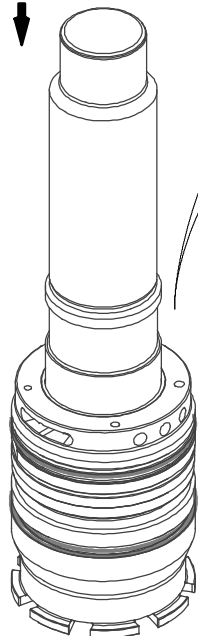
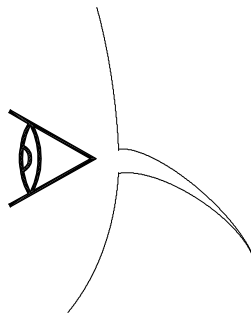
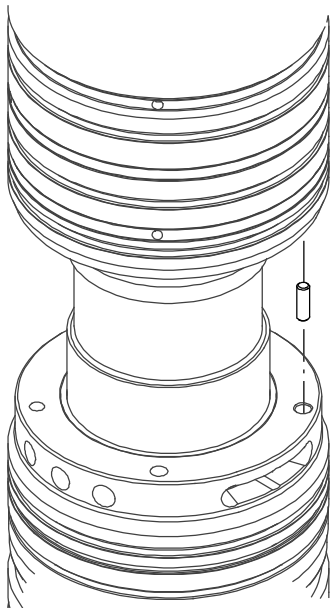


10

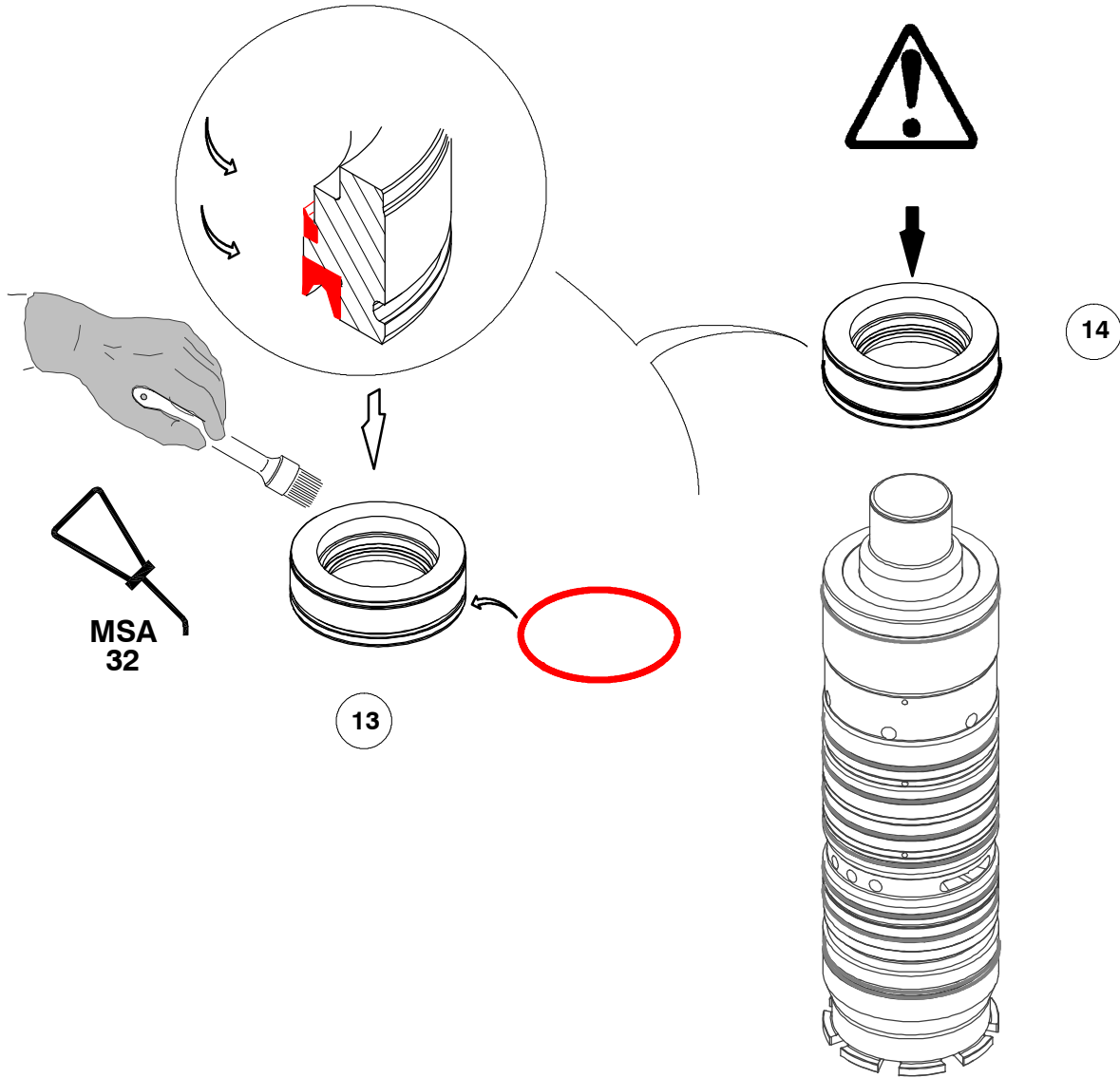
EM22



11



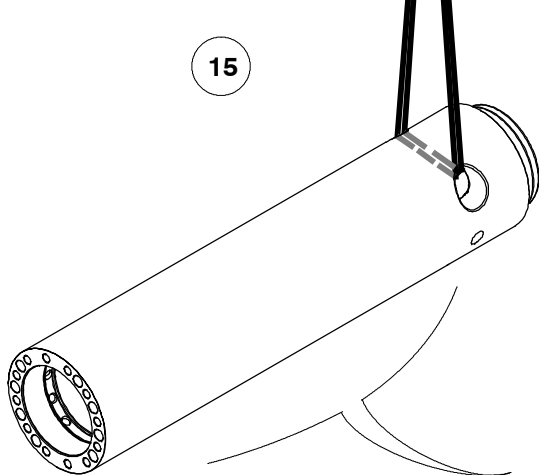
12



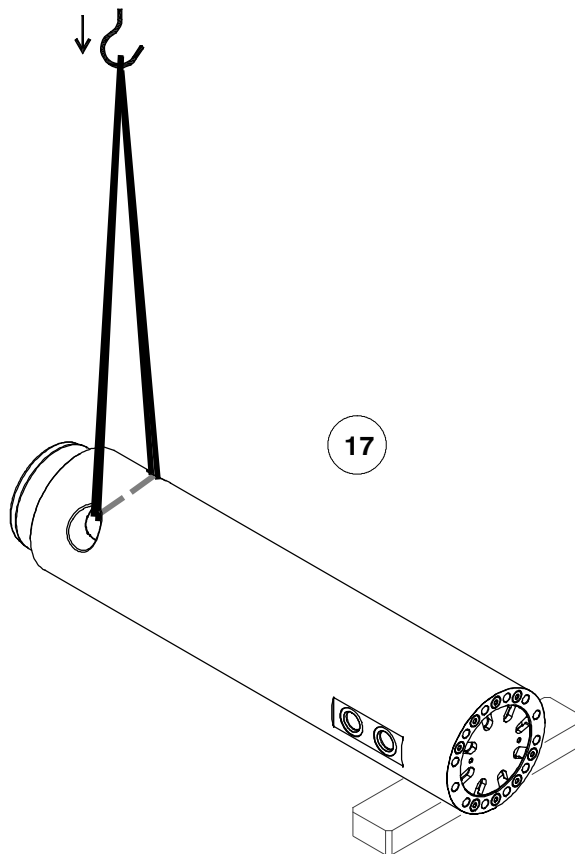
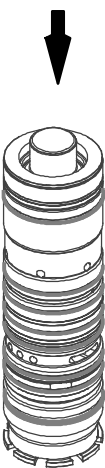


77 kg
170 lb

15



16



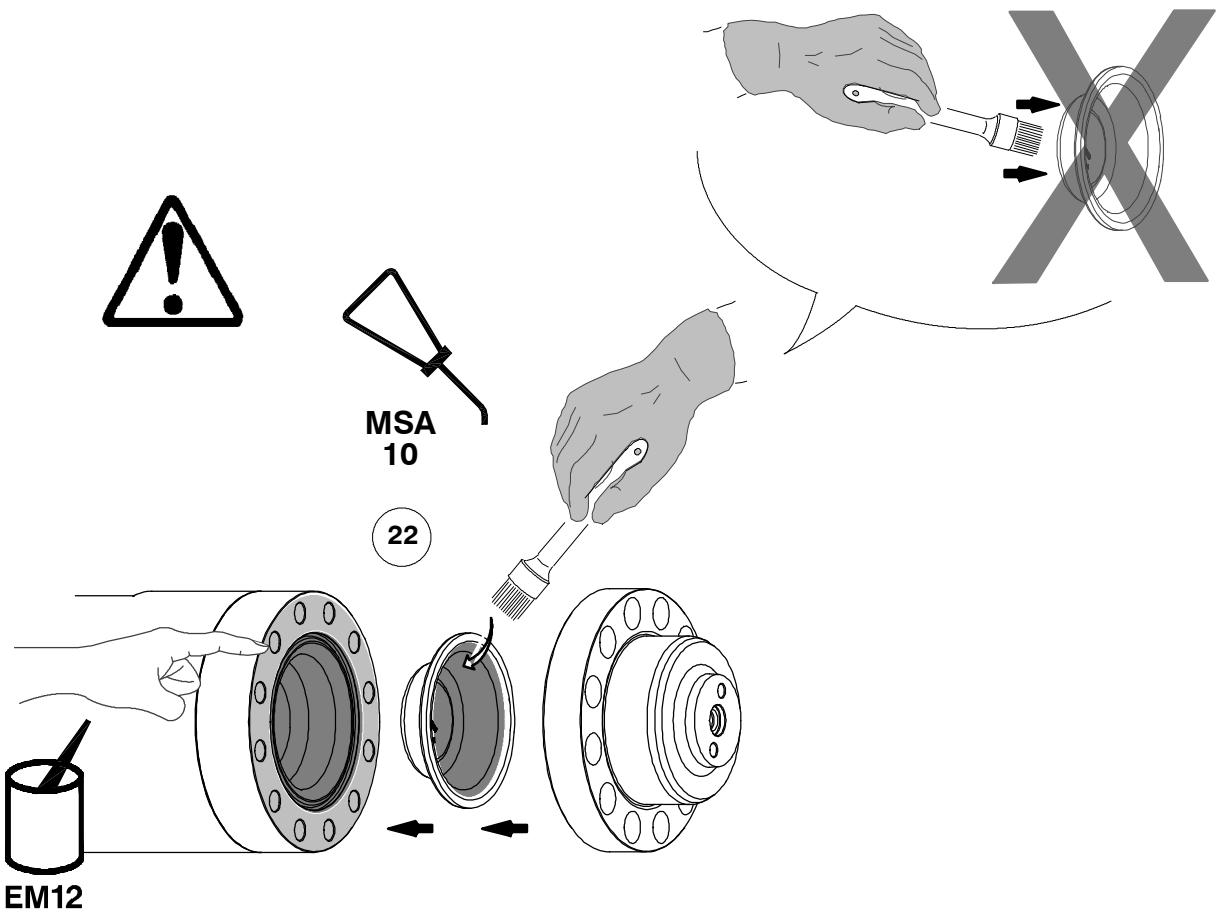
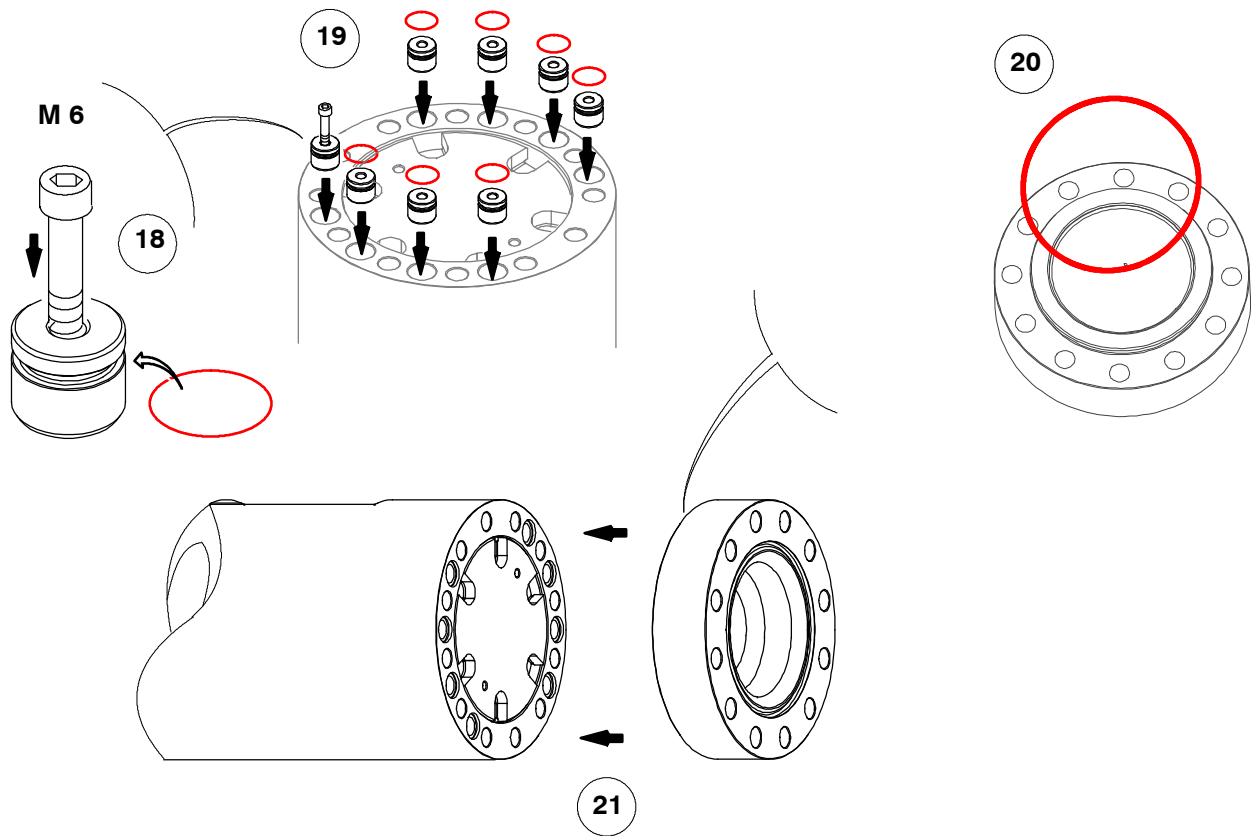
17



SC 36
86695996

WS 31

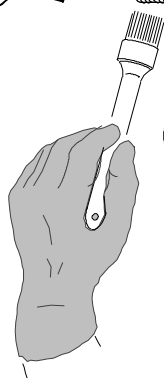
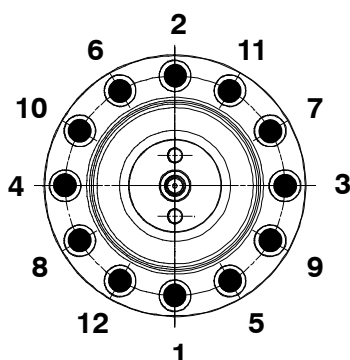
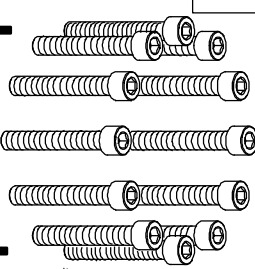
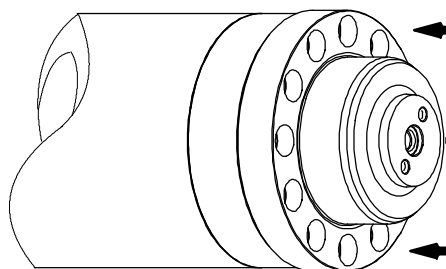
MONTABERT®
04 / 2015



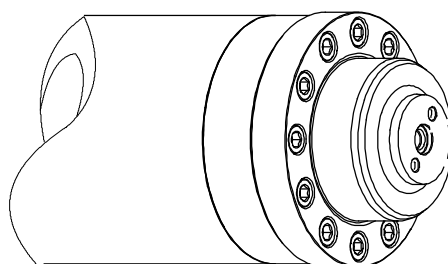
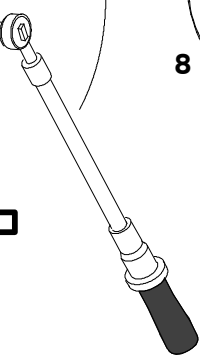
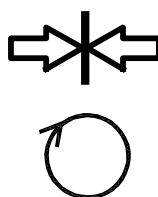


10 mm
3/8"

99 Nm
73 ft.lb



23



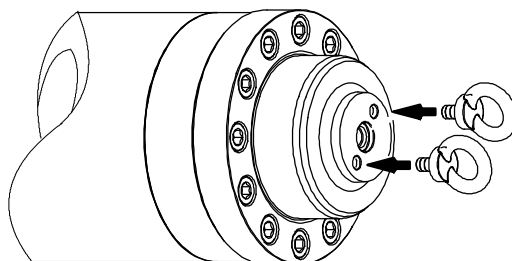
24



WS 39



25



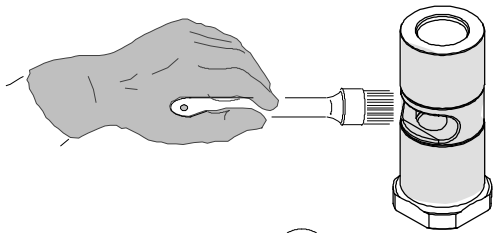
WS 41



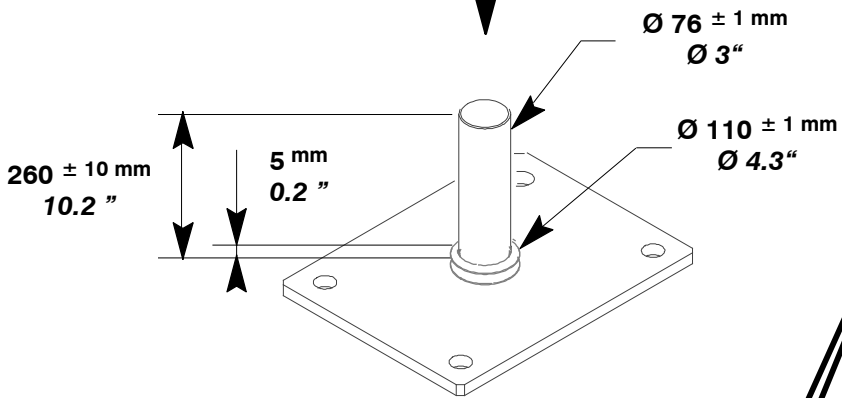
SC 36
86695996

WS 33

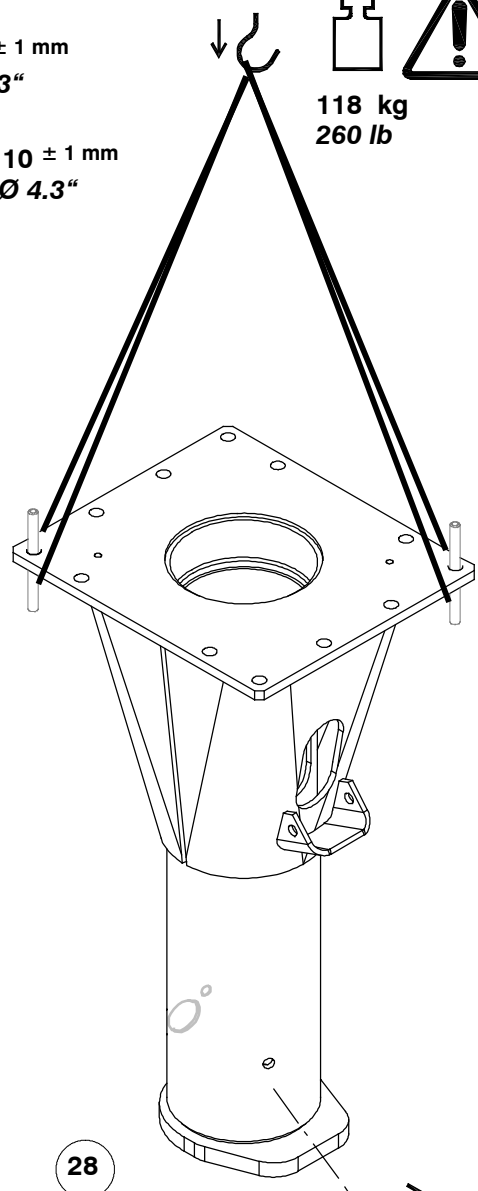
MONTABERT®
04 / 2015



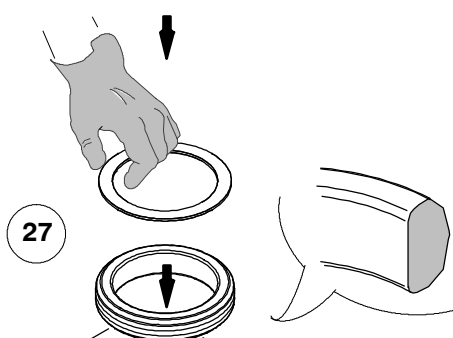
26



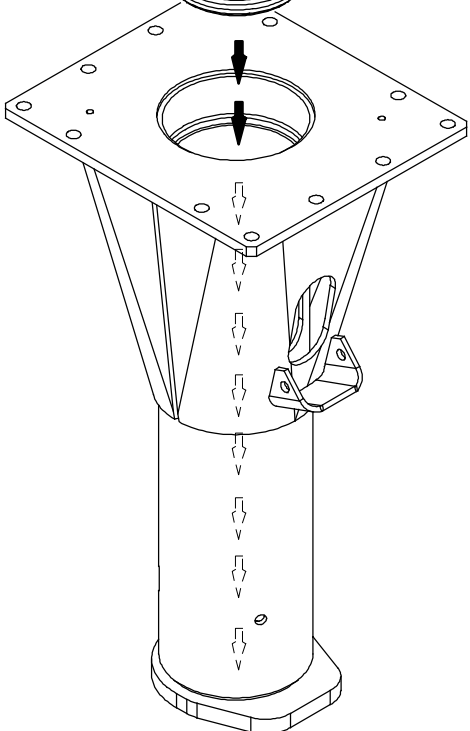
118 kg
260 lb

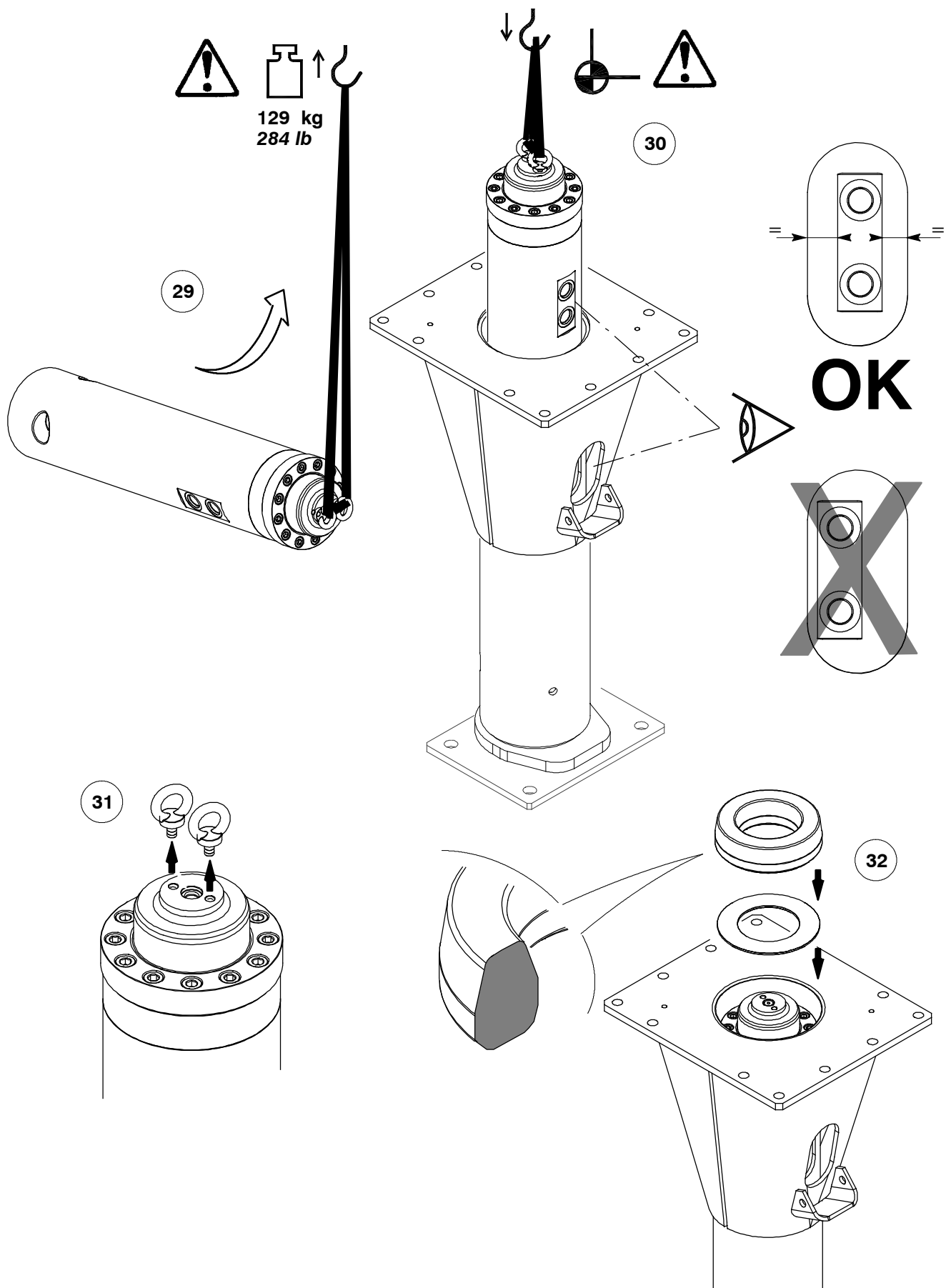


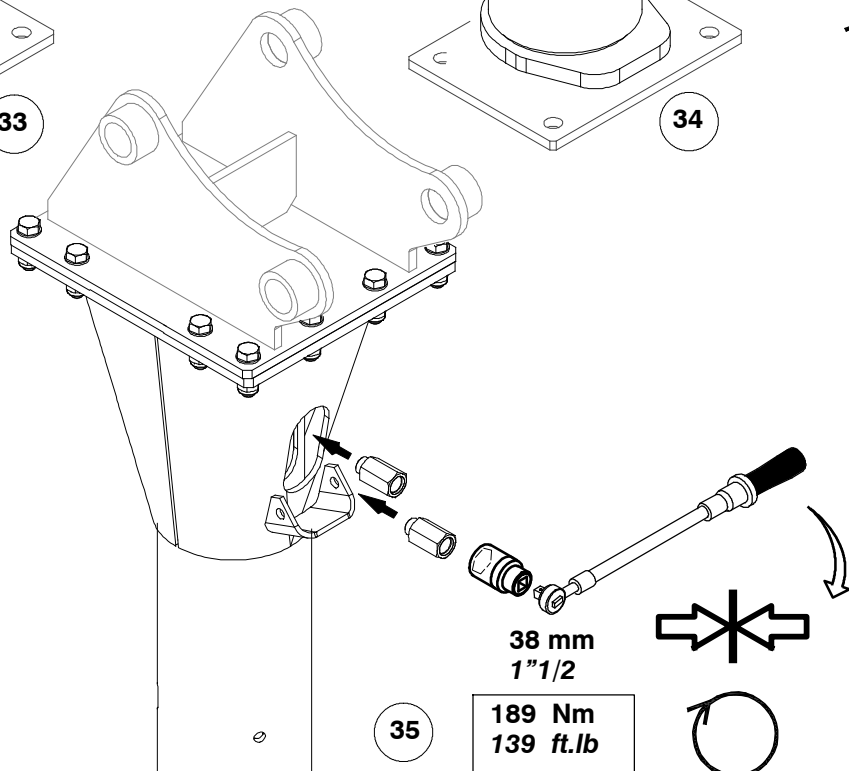
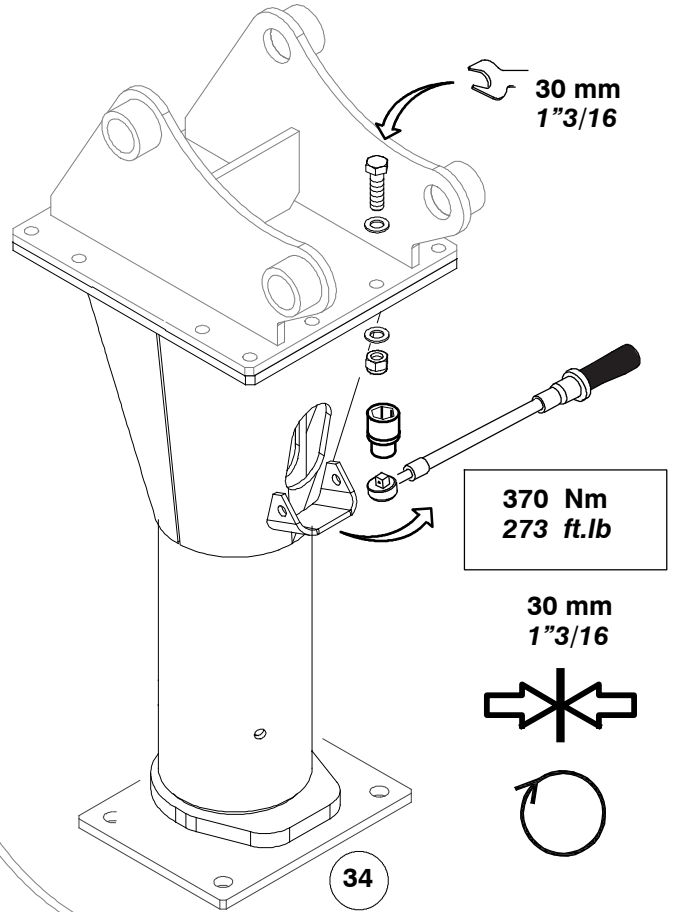
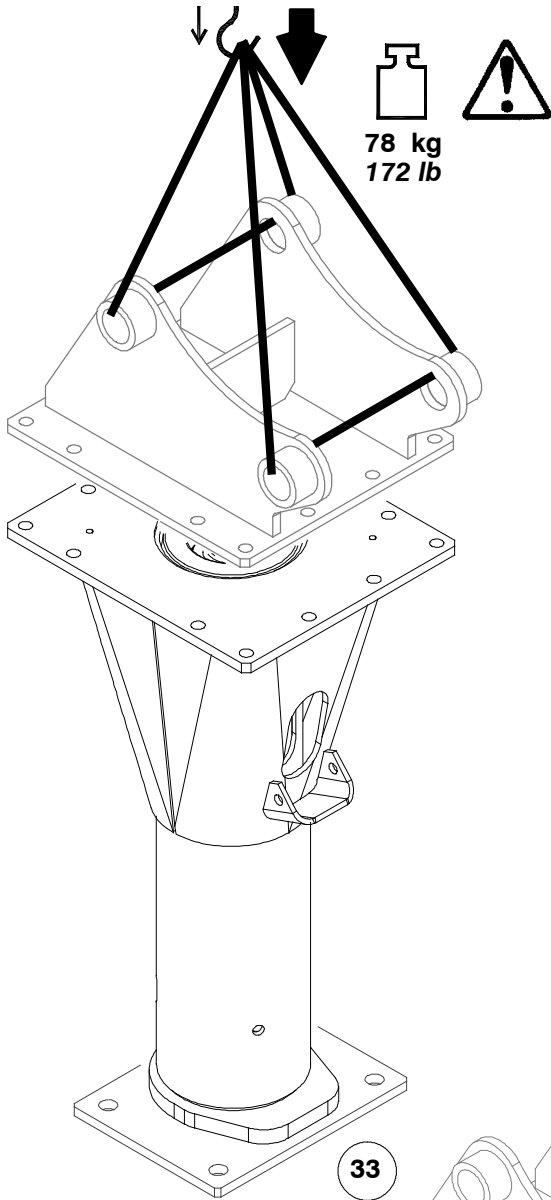
28

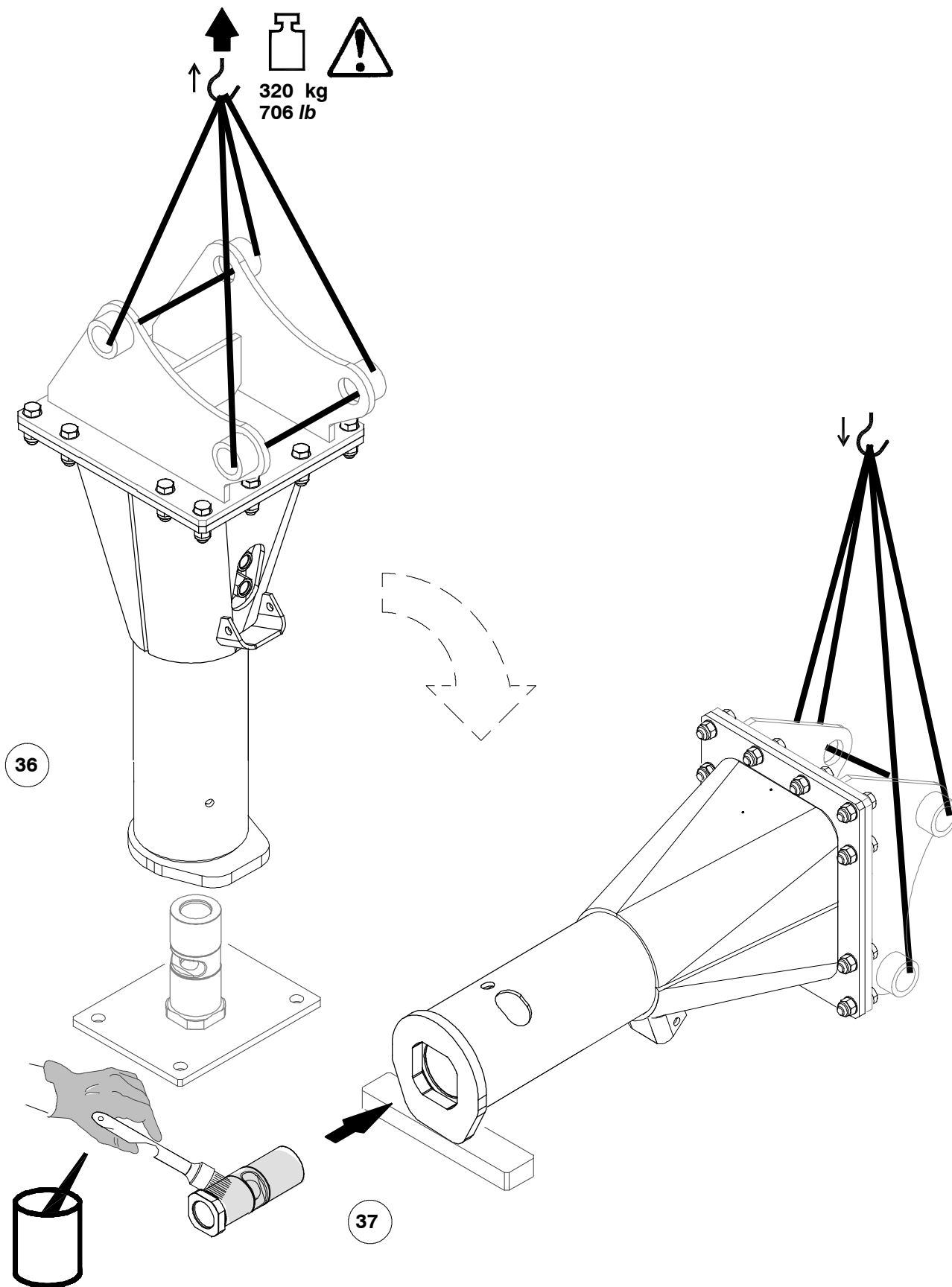


27









320 kg
706 lb

36

37

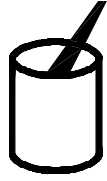


EM2

SC 36
86695996

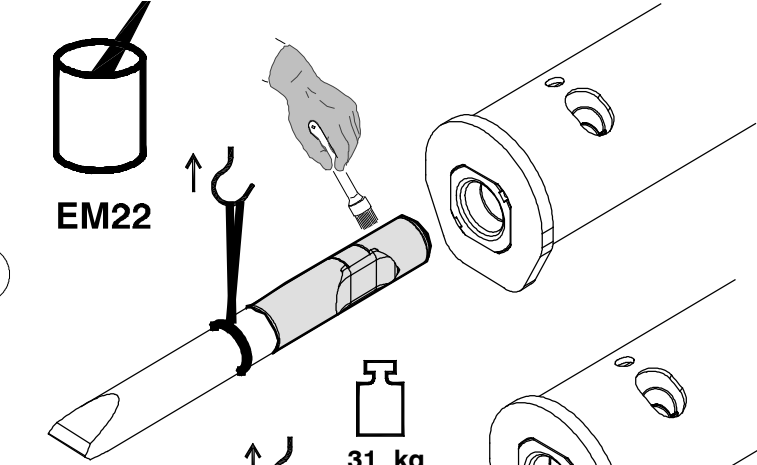
WS 37

MONTABERT®
04 / 2015



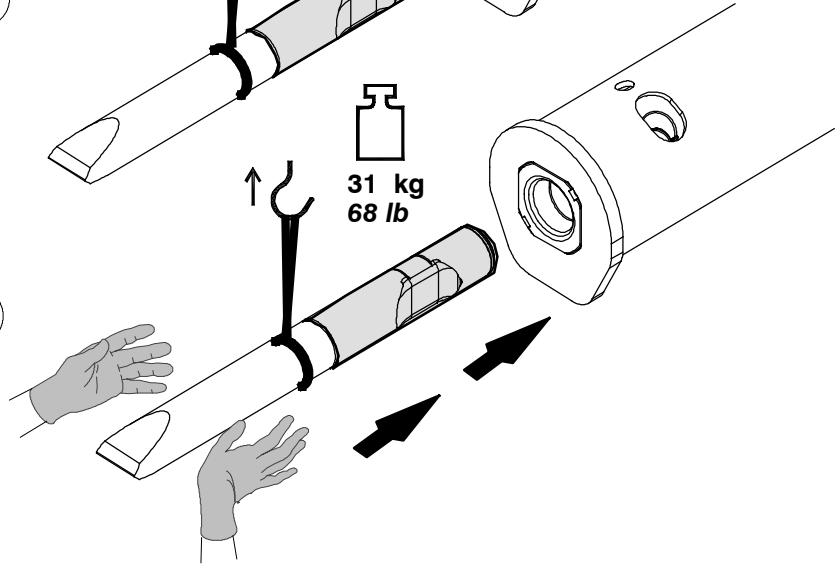
EM22

38

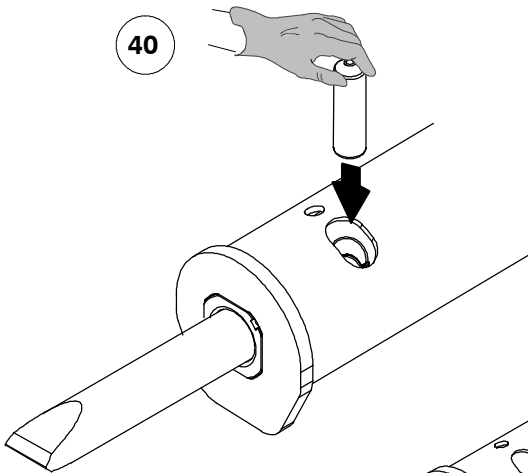


31 kg
68 lb

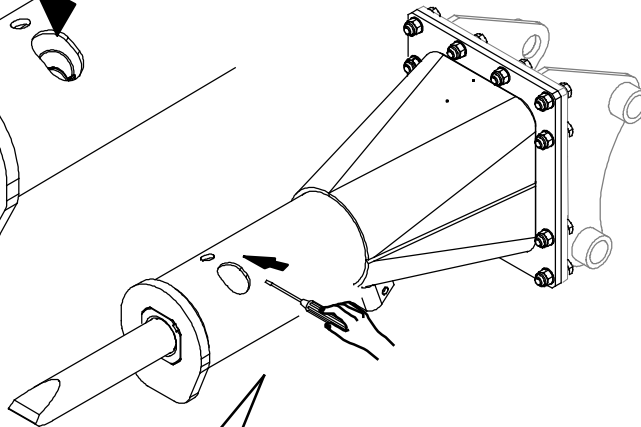
39



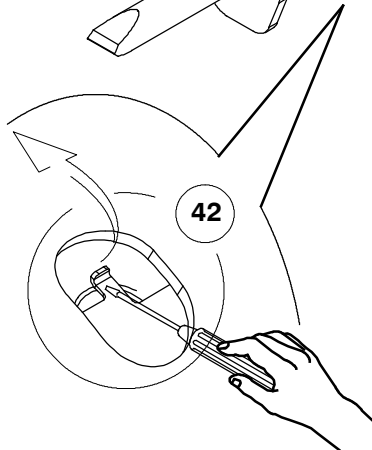
40



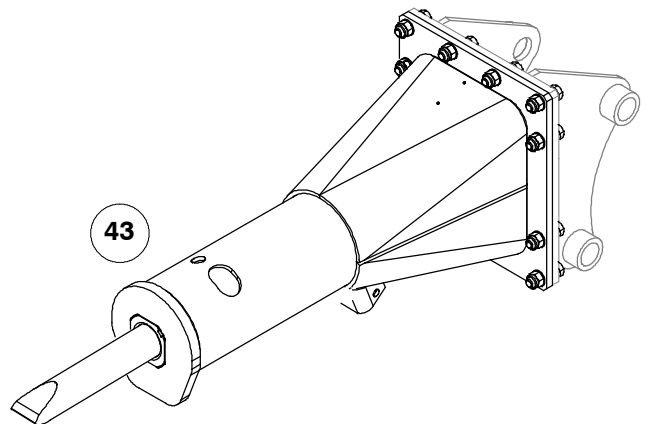
41

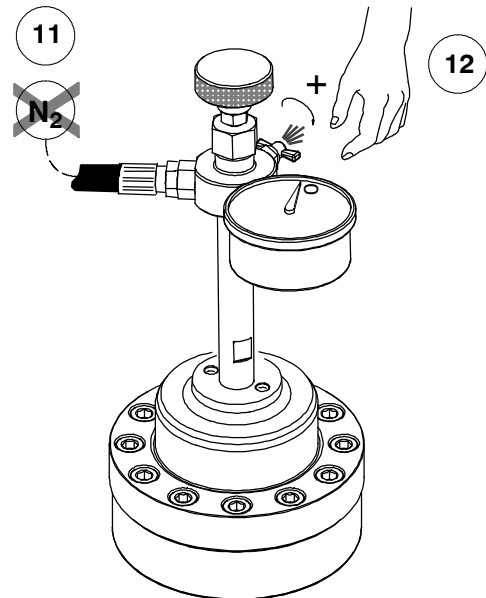
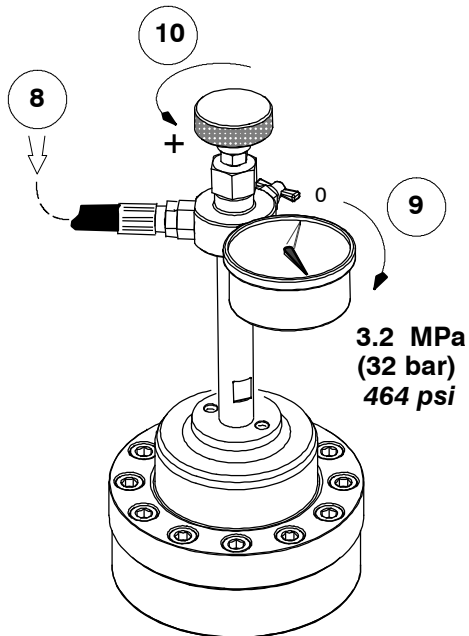
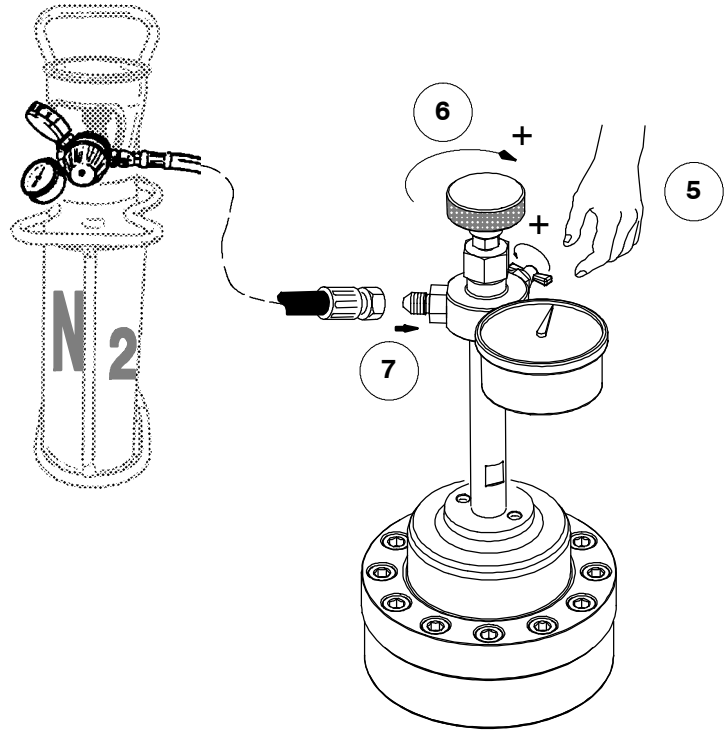
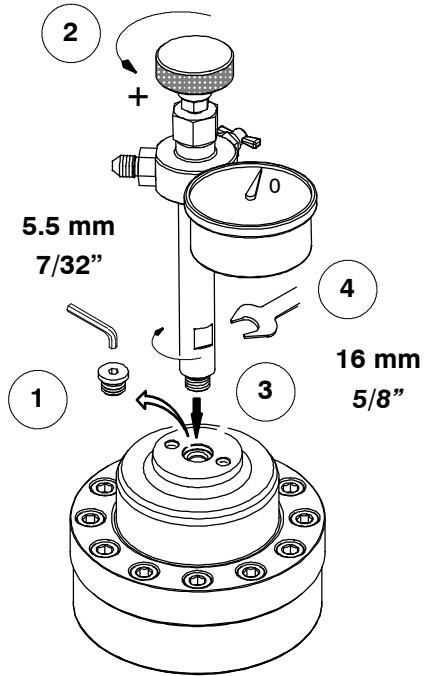


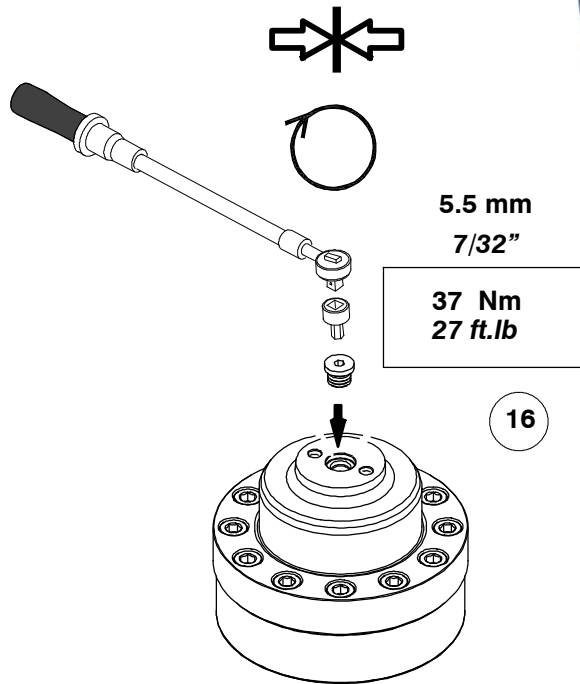
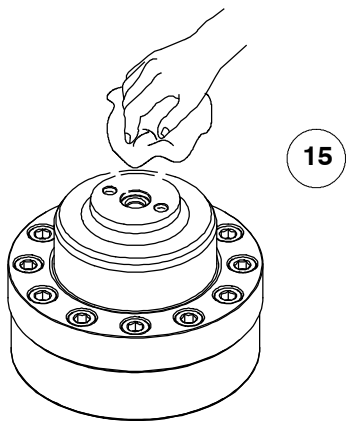
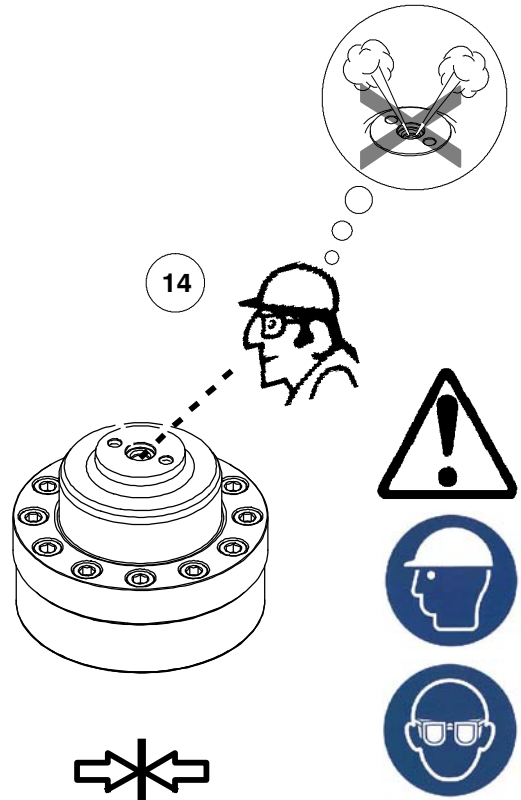
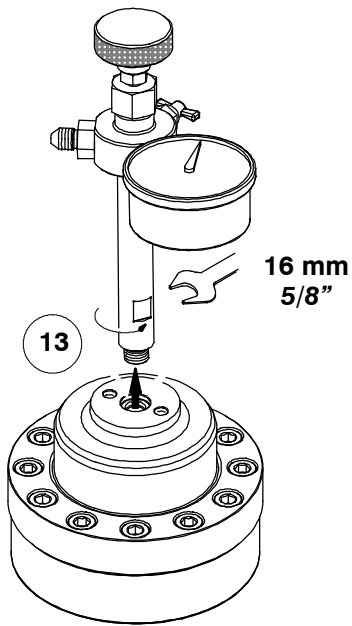
42

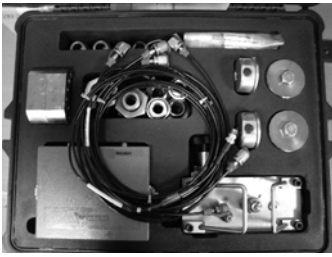


43





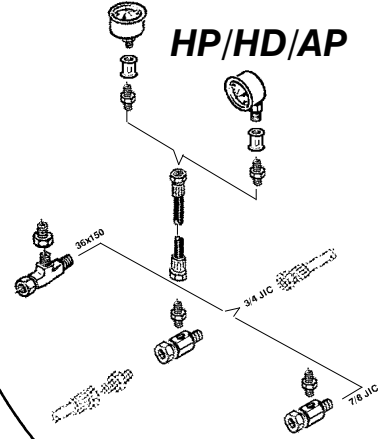




86720893
Hydraulic tester
Testeur hydraulique
Hydraulikprüfvorrichtung
Probador hidráulico

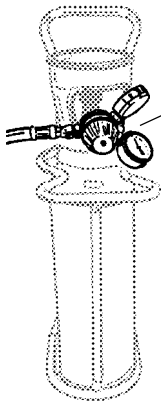
86490323
HP / LP pressure checking device
Contrôle de pression hydraulique
Hydraulikdruckprüfvorrichtung
Control de presión hidráulica

LP/BP/ND
HP/HD/AP



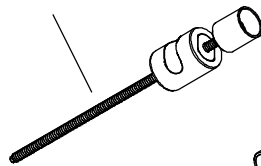
86626017
Inflation kit
Kit de gonflage
Füllvorrichtung
Kit de inflado

86565348
Hoisting ring M10
Anneau de levage M10
Hebeshaken M10
Anillo de elevación M10

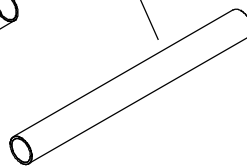


86745981
Nitrogen pressure reducer
Détendeur d'azote
Stickstoffdruckreduzierventil
Descompresor de nitrógeno

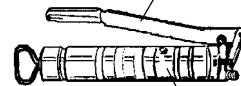
86642352
Dismantling tool
Outil de démontage
Demontagewerkzeug
Herramienta de desmontaje



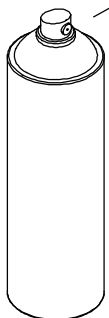
86639879
Dismantling tube
Tube de démontage
Demontageröhre
Tubo de desmontaje



86261328
Grease hand pump
Pompe à graisse
Fettpresse
Bomba a grasa

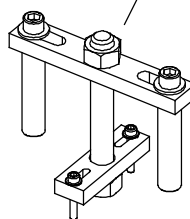


86476314
Grease cartridge (EM 22)
Cartouche de graisse (EM22)
Fettkartusche (EM 22)
Cartucho de grasa (EM 22)

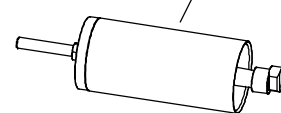


86629631
Rust protector wax
Cire de protection contre la corrosion
Rostschutzwachs
Cera de protección contra la corrosión

86627965
Piston cover extracting tool
Extracteur du couvercle de piston
Schlagkolbendeckelabzieher
Extractor de la tapa del pistón



86627320
Bushing extracting tool
Extracteur de douille mécanique
Mechanischer Hülsenabzieher
Extractor del manguito mecanizado



MONTABERT®

MONTABERT SAS
203 Route de Grenoble
CS 80097
69805 St PRIEST CEDEX
FRANCE _____



www.montabert.com

© Copyright 2015 Montabert®. Any unauthorized use or copying of the contents or any part thereof is prohibited. Illustrations and photos in this brochure may show equipment with optional extras. Nothing contained in this brochure is intended to extend any warranty or representation expressed or implied, regarding the products described herein. Any such warranties or other terms and conditions of sale products shall be in accordance with Montabert's standard terms and conditions of sale for such products, which are available upon request. Specifications and machines can be modified at any time and without notice. Montabert® Société par Actions Simplifiée (SAS) au capital de 8,459,359 € - 397 482 647 RCS LYON