

INFLATING PROCEDURE



BACK HEAD NITROGEN INFLATING PROCEDURE



IMPORTANT !

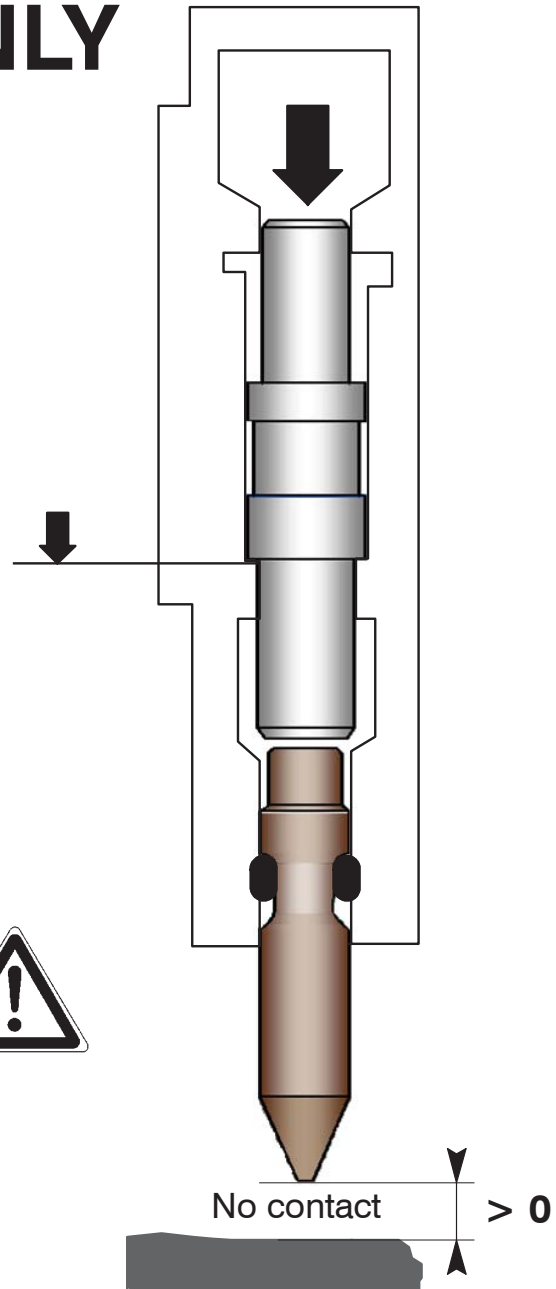
NITROGEN ONLY

Before inflating :

The strike piston must be imperatively in down position, the tool (rod) must not push the piston upward (contact) or, dismantle the tool (rod).

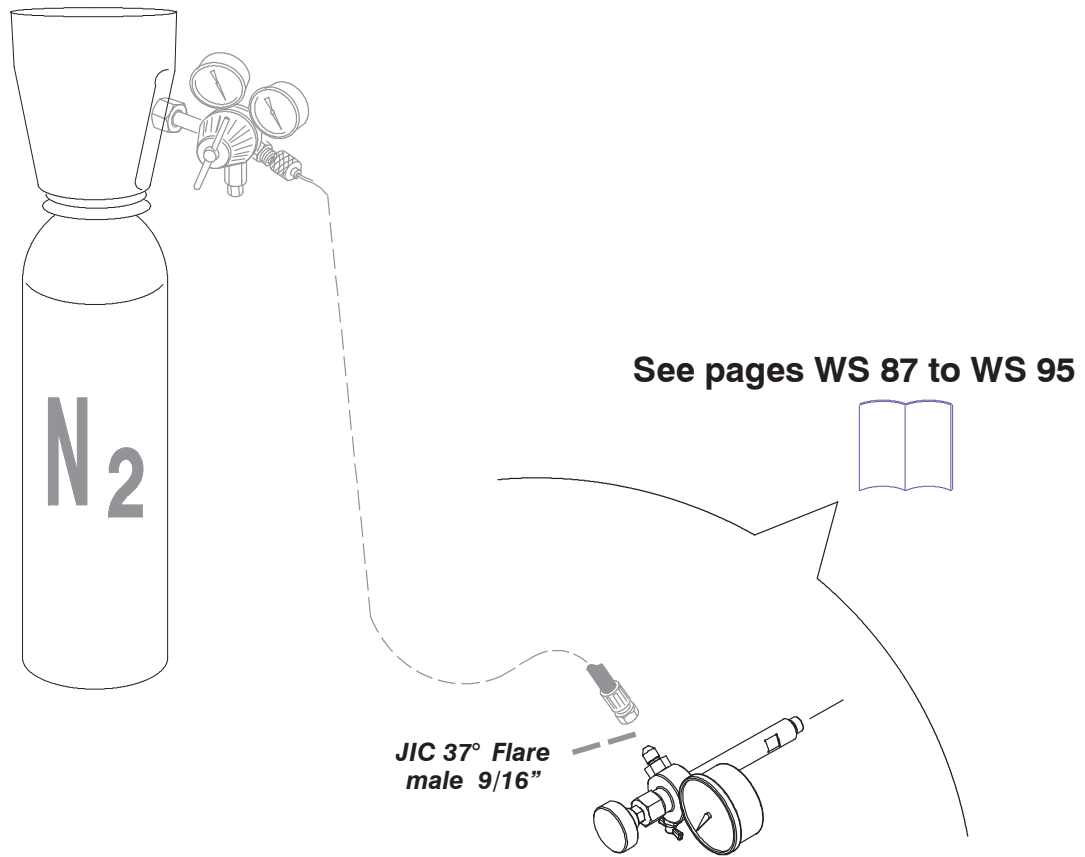
For safety reasons :

Do not stay close to the tool (rod), during the inflating operation.

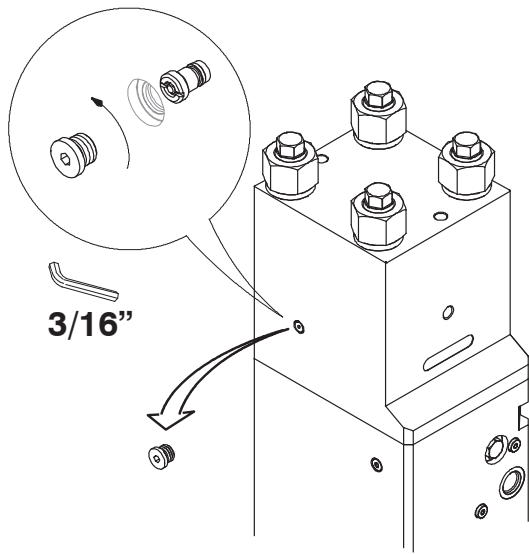




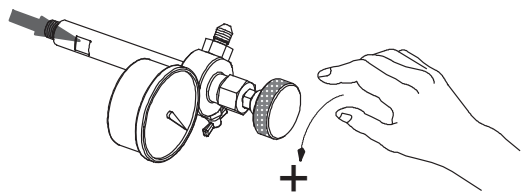
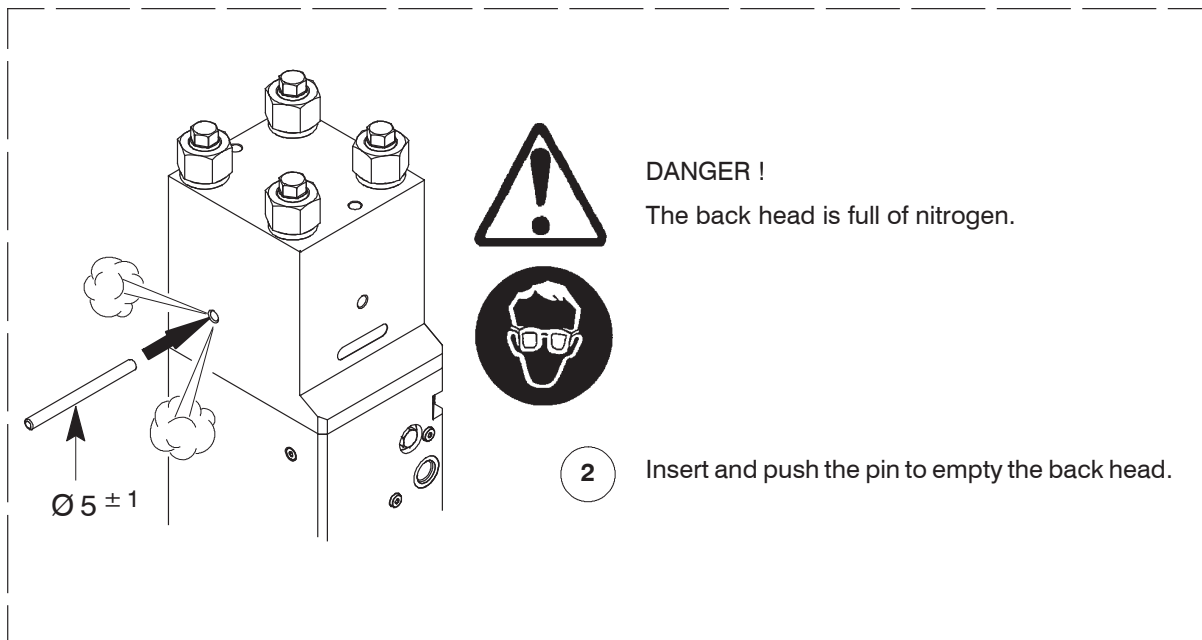
INFLATING PROCEDURE



INFLATING PROCEDURE



- 1 Unscrew the plug with hexagonal key (3/16") and remove it.

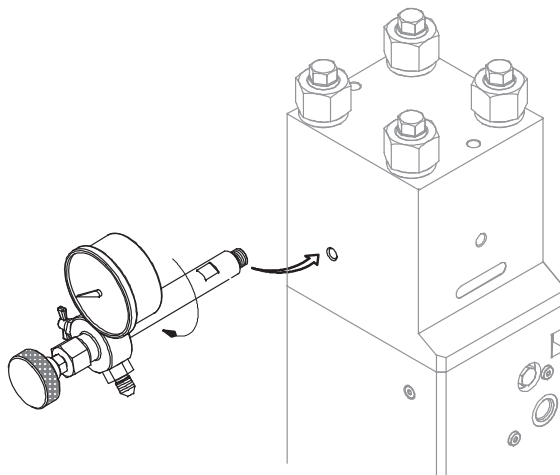


- 3 Turn the control knob completely in an anticlockwise direction.

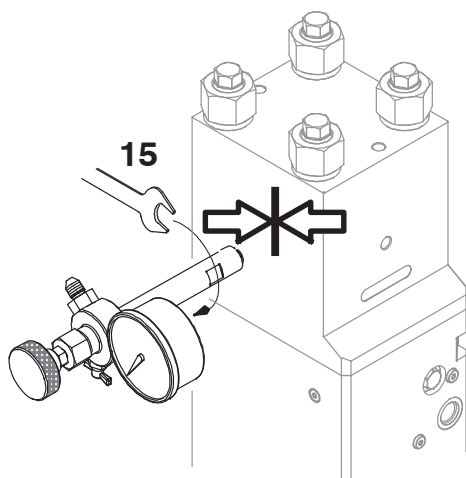




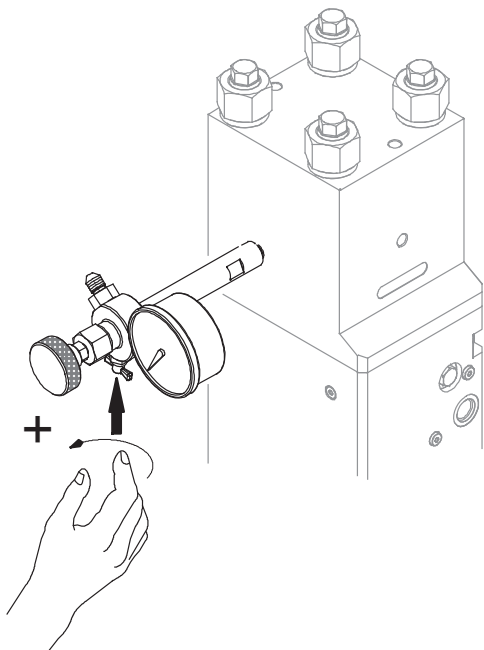
INFLATING PROCEDURE



- 4 Put in place and screw the inflating tool without touching the control knob.



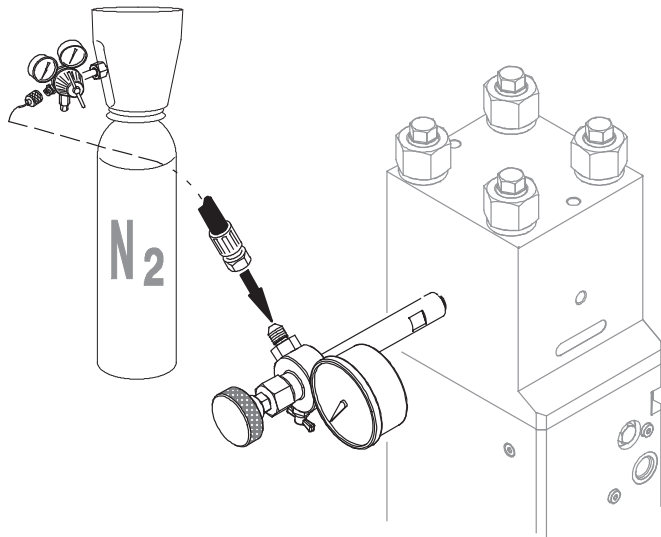
- 5 Screw in with an open wrench.



- 6 Close the draining cock.



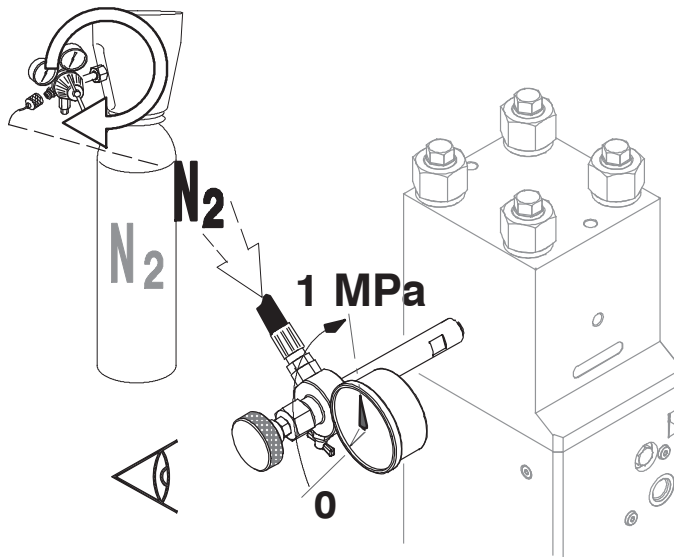
INFLATING PROCEDURE



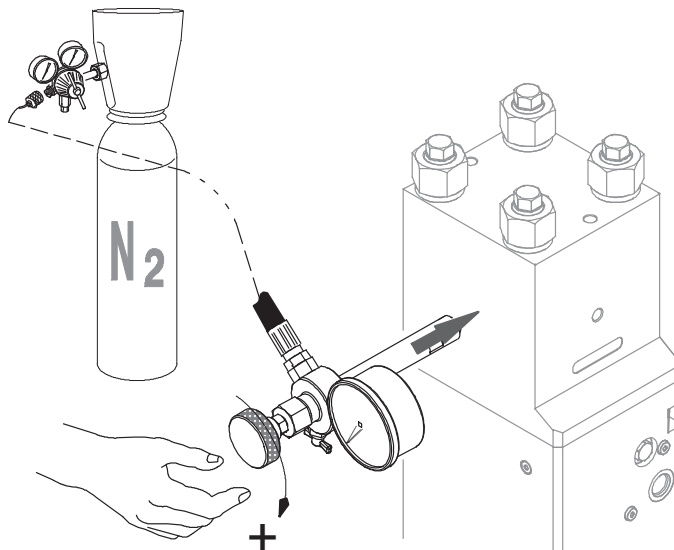
- 7 Connect the nitrogen bottle to the hose.



- 8 Turn on the nitrogen bottle plug cock.



- 9 Using the pressure reducing valve, to adjust the pressure to 1 MPa.

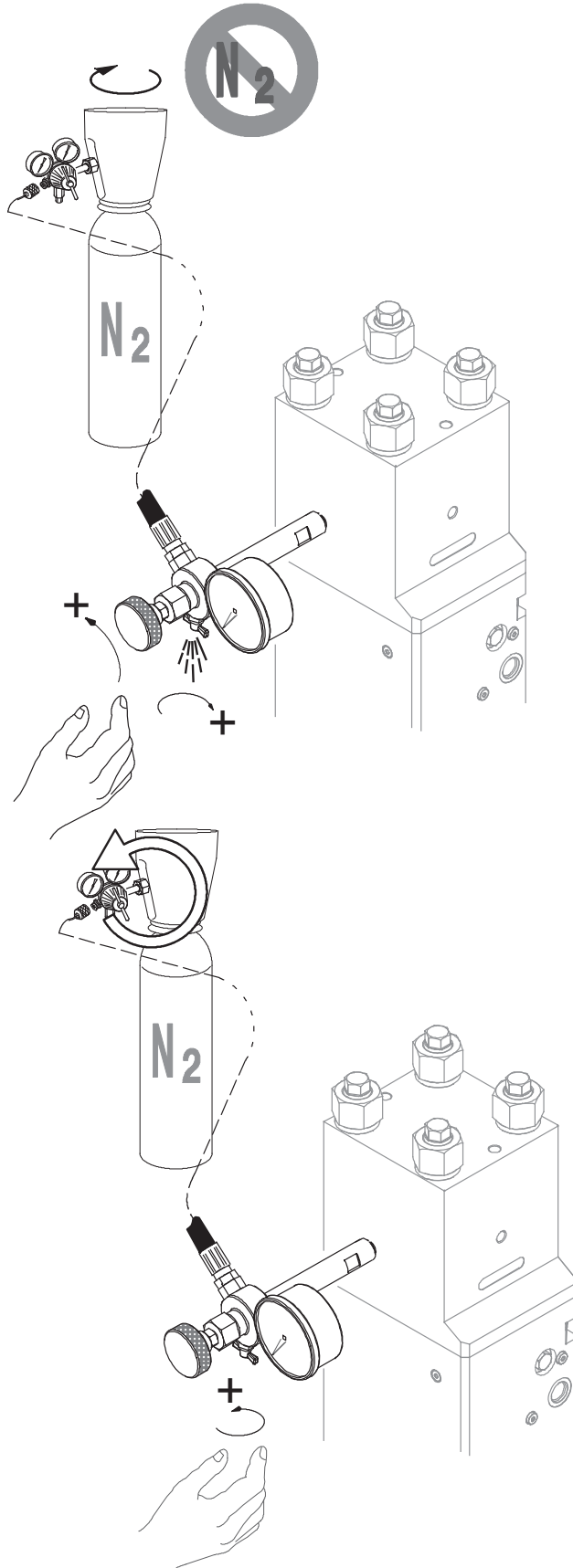


- 10 Screw the control knob clockwise. The nitrogen gas penetrates into the back head.





INFLATING PROCEDURE



11 Turn off the nitrogen bottle plug cock.

12 Turn the control knob completely in the anticlockwise direction.

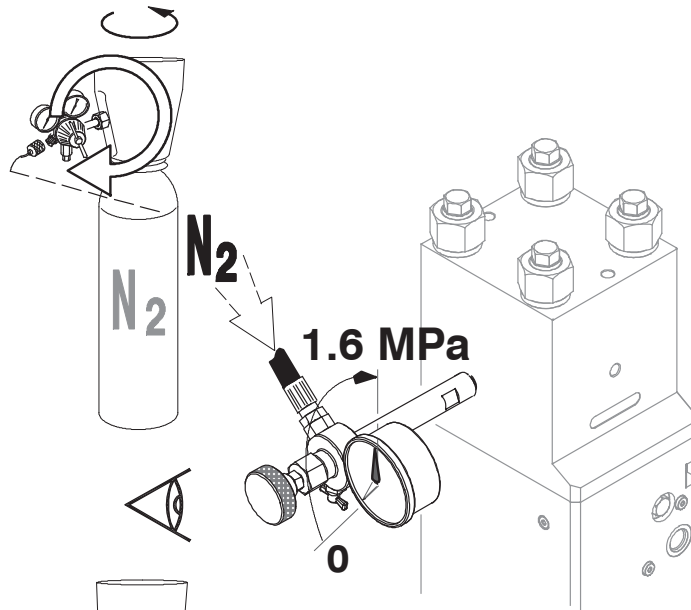
13 Open the draining cock.

14 Reset the pressure reducing valve to zero.

15 Close up the draining cock.

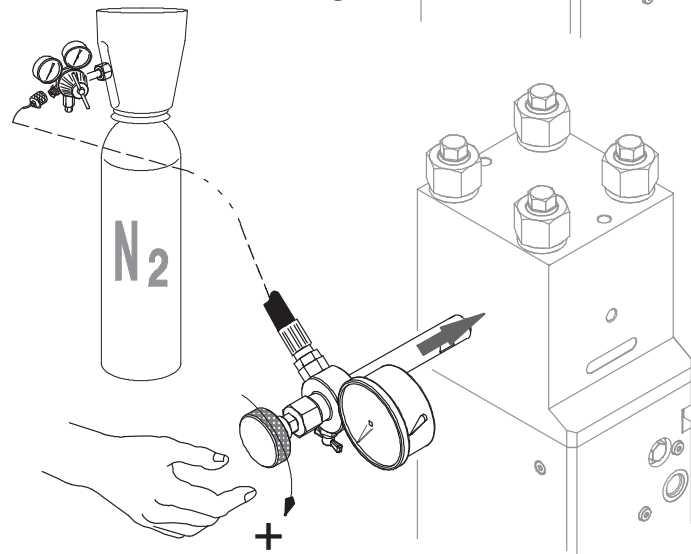


INFLATING PROCEDURE



- 16 Turn on the nitrogen bottle plug cock.

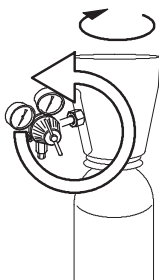
- 17 Adjust until the specified pressure. See TABLE (pressure according to the temperature).



- 18 Screw the control knob clockwise. The nitrogen gas penetrates into the back head.



- 19 Wait 3 mn to stabilize the pressure.



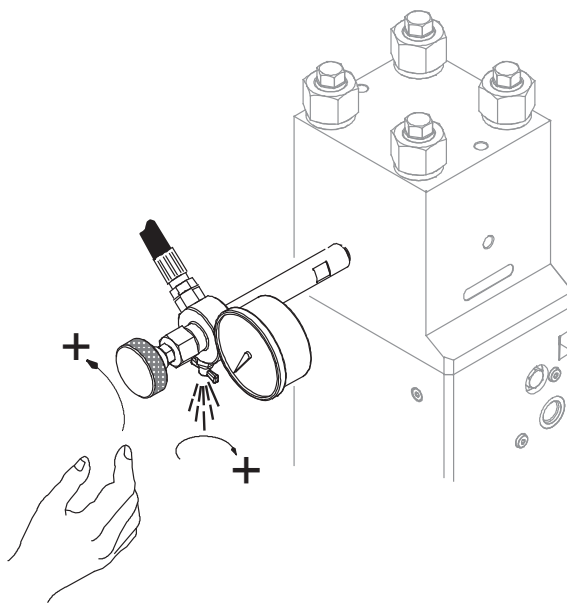
- 20 Close the nitrogen bottle plug cock.

- 21 Reset the pressure reducing valve to zero.



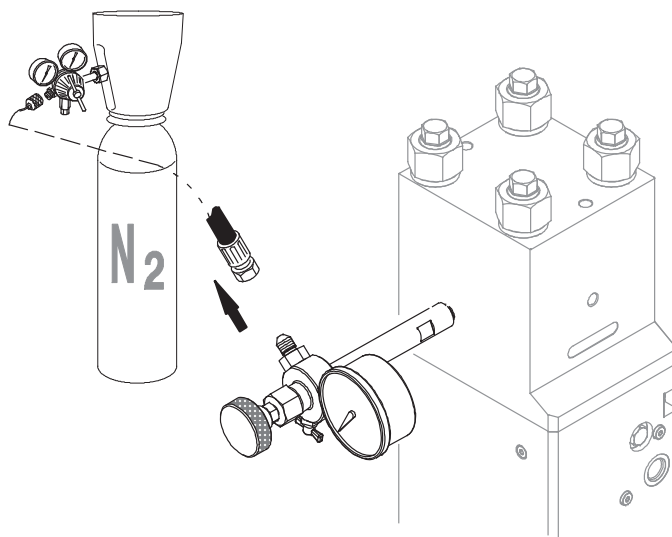


INFLATING PROCEDURE

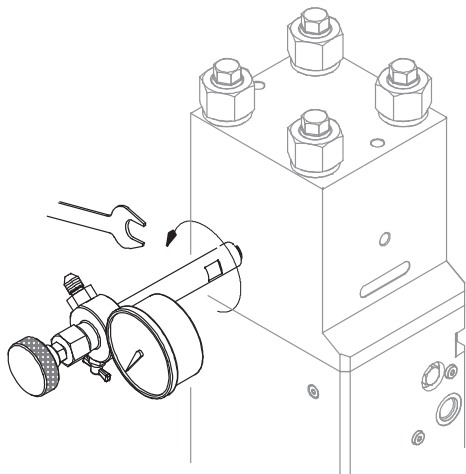


22 Turn the control knob completely in an anticlockwise direction.

23 Open the draining cock.



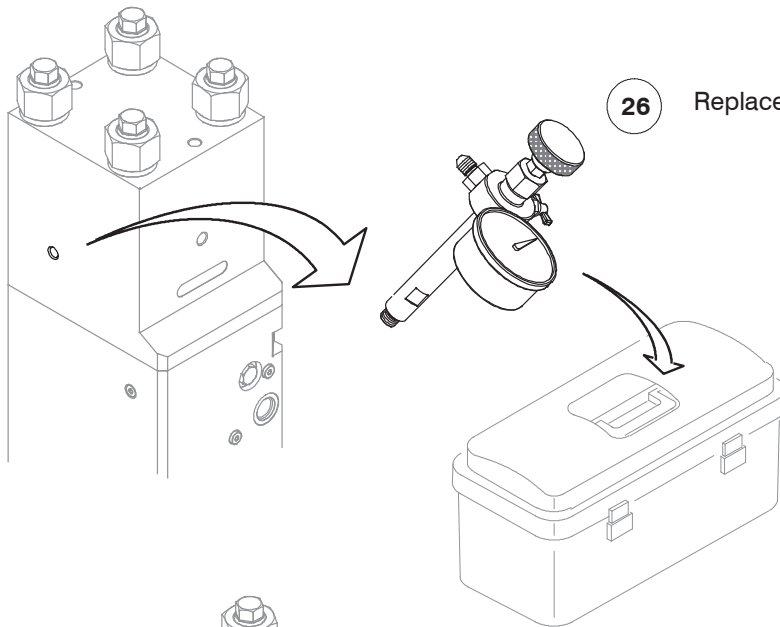
24 Disconnect the hose.



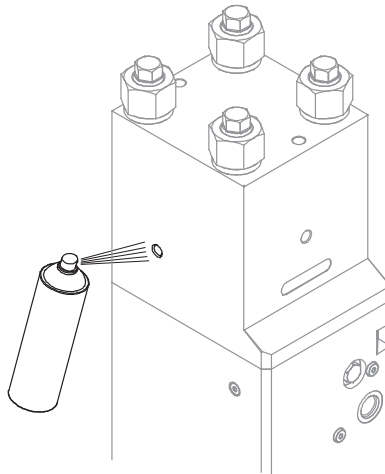
25 Dismount the inflating device.



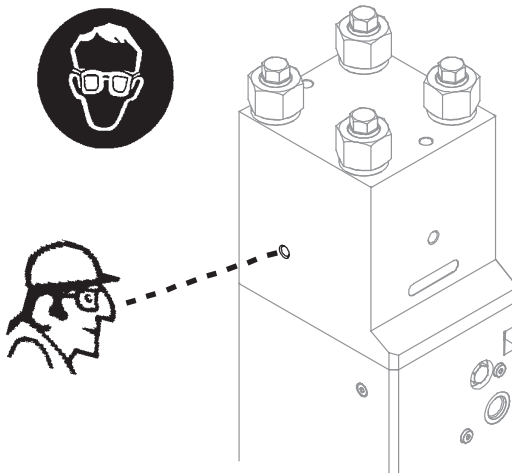
INFLATING PROCEDURE



26 Replace the device into the tool box.



27 Fill inflating device valve with "silicon" in spray to check the valve leak.

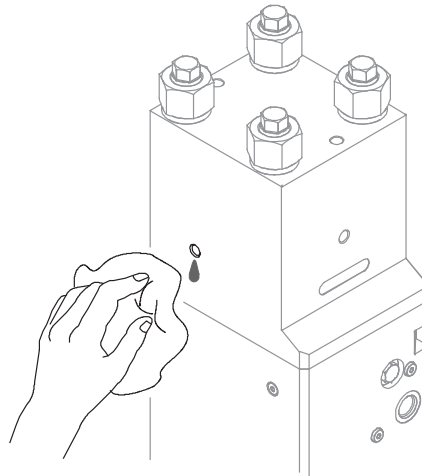


28 Check that there are no bubbles formed on the surface.

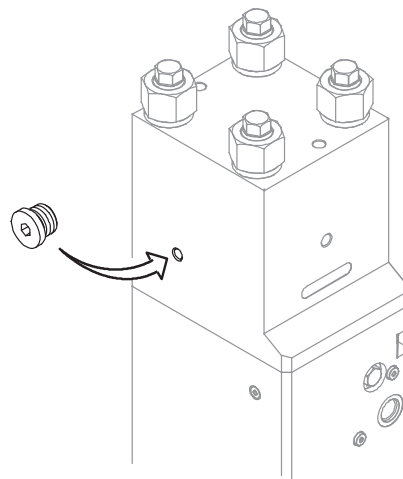




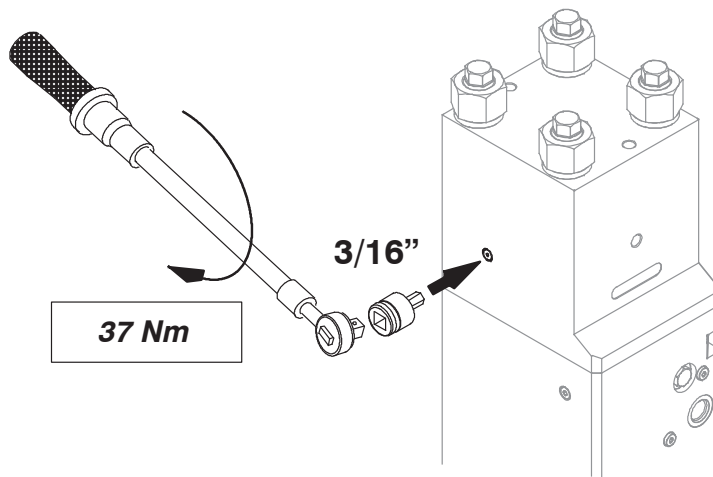
INFLATING PROCEDURE



29 Clean correctly.



30 Put back the lock plug.



31 Tighten with a wrench torque.





INFLATING PROCEDURE

BACK HEAD INFLATING TABLE (depend of the temperature of the back head surface)

Temperature in °C		Nitrogen pressure setting (in MPa)									
		- 20	- 10	0	10	20	30	40	50	60	70
Breaking mountain	A $\begin{smallmatrix} +0. \\ 0 \end{smallmatrix}$	1.3	1.35	1.4	1.45	1.5	1.55	1.6	1.65	1.7	1.75
Secondary breaking stone	B $\begin{smallmatrix} +0. \\ 0 \end{smallmatrix}$	0.9	0.95	1	1.05	1.1	1.15	1.2	1.25	1.3	1.35
Breaking building	C $\begin{smallmatrix} +0. \\ 0 \end{smallmatrix}$										

