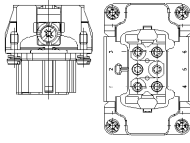


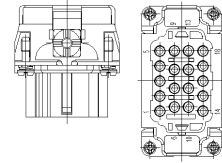
Anschluss	Pin	Signal	Querverweis
1	L1	Signal	/14.8
2	N		/14.8
3	L2		/14.8
4	L3		/14.8
6	PE		/14.8

**+14
-X6s**
Abgang rechts, Verbräterungsteil 0.25m
outlet right hand, extension 0.25m

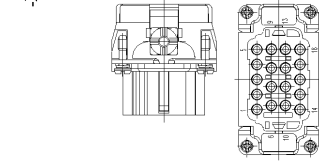


Anschluss	Pin	Signal	Querverweis
1	+24VDC		/28.2
2	+24VDC		/28.2
3	T31		/28.2
4	T31		/28.2
5	MCNOT-0		/28.2
6	MCNOT-0		/28.2
7	MCNOT+0		/28.2
8	MCNOT+0		/28.2
9	CAN_L		/28.2
10	CAN_L		/28.2
11	CAN_L		/28.3
12	CAN_L		/28.3
13	T31		/28.3
14			/28.3
15			/28.3
16			/28.3
17			/28.3
18			/28.3
PE			/28.3

**+11
-X7s**

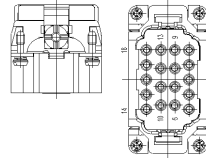


Anschluss	Pin	Signal	Querverweis
1	+24VDC		/28.6
2	+24VDC		/28.6
3	T31		/28.6
4	T31		/28.6
5	MCNOT-0		/28.6
6	MCNOT-0		/28.6
7	MCNOT+0		/28.6
8	MCNOT+0		/28.6
9	CAN_L		/28.6
10	CAN_L		/28.6
11	CAN_L		/28.7
12	CAN_L		/28.7
13	L+		/28.7
14			/28.7
15			/28.7
16			/28.7
17			/28.7
18			/28.7
PE			/28.7



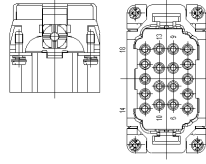
Anschluss	Pin	Signal	Querverweis
1			
2			
3			
4			
5	MCNOT-0		/28.2
6	MCNOT-0		/28.2
7	MCNOT+0		/28.2
8	MCNOT+0		/28.2
9	#52		/28.2
10	#53		/28.2
11	#52		/28.3
12	#53		/28.3
13			
14			
15			
16			
17			
18			
PE			

**+11
-X7p**



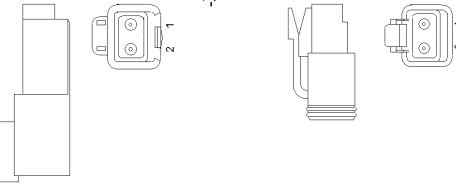
Anschluss	Pin	Signal	Querverweis
1			
2			
3			
4			
5	MCNOT-0		/28.6
6	MCNOT-0		/28.6
7	MCNOT+0		/28.6
8	MCNOT+0		/28.6
9	#50		/28.6
10	#51		/28.6
11	#50		/28.7
12	#51		/28.7
13			
14			
15			
16			
17			
18			
PE			

**+11
-X8p**



Anschluss	Pin	Signal	Querverweis
1	screen plate sensor		/28.2
2	screen plate sensor		/28.3

**+11
-X9s**



Anschluss	Pin	Signal	Querverweis
1	screen plate sensor		/28.2
2	screen plate sensor		/28.3

**+11
-X9s**

Drawing by:	Approved by:	Status:	Material No.:
date: 23.07.2016	date: 29.07.2016	SF	2430993
name: Heinzel	name: Beringhof	AE = abgang PF = prototypenphase SF = serial release	Revision No.: 03_00_00
E - CAE	Document type:	Function group No.:	
	ESP	45	

Document No.:	Partial Document No.:	Version No.:
Series code: 23AB	Valid for Serial No.:	
Sheet plant: Sheet Location:	from 0675 to	XXXX

Steckerverzeichnis	Sheet:
table of connectors	36
	of
	50
	Sheets