

# Fettschmierplan Lubrication diagram

**Super 1600-3 / 1600-3i**

**1582**  
Baureihe /  
Series

**0010 - XXXX**  
Seriennummer /  
Serial No

**12.01.2016**  
Ausgabedatum /  
Date of issue

**FFP\_1582\_2342386\_00\_00\_00**  
Katalog Bestellnummer /  
Catalogue order No

**Schutzvermerk nach ISO 16016**

Weitergabe sowie Vervielfältigung dieses Dokuments, Verwertung und Mitteilung seines Inhalts sind verboten, soweit nicht ausdrücklich gestattet.

Zuwiderhandlungen verpflichten zum Schadenersatz. Alle Rechte für den Fall der Patent-, Gebrauchsmuster- oder Geschmacksmustereintragung vorbehalten.

**Protection Notice ISO 16016**

The reproduction, distribution and utilization of this document as well as the communication of its contents to others without explicit authorization is prohibited.

Offenders will be held liable for the payment of damages. All rights reserved in the event of the grant of a patent, utility model or design.

Blatt / Sheet	Inhalt / Contents	Blatt / Sheet	Inhalt / Contents
1	Deckblatt cover sheet		
2	Inhaltsverzeichnis contents		
3	Topologie topology		
4	Fettschmieranlage grease lubrication		
5	Erklärung Aufbau Betriebsmittelkennzeichen Explanation device designation layout		
6	Erklärung Gerätekenbuchstaben, hydraulisch Explanation device code letter, hydraulic		
7	Erklärung Linienformate, Leitungsbezeichnungen explanation line formats, line designations		

Drawing by:		Approved by:		last change:		Status:		Material No.:		Document No.: Partial Document No.: Version No.:		Sheet			
date	12.03.2014	date	06.06.2014	date		<b>SF</b>	AE =changable	2342386		Inhaltsverzeichnis contents		2			
name	Keilmann	name	Holzmann	name			PF =prototype release	Revision No.:	00			Series code: 1582 Valid for Serial No.:		of	
E - CAE		Document type:		Function group No.:			SF =serial release					from 0010 to XXXX		8	
		<b>FFP</b>								Sheet plant:		Sheets			
										Sheet Location:					

Hydraulics

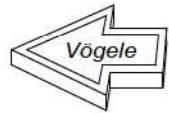
Schutzvermerk nach ISO 16016 beachten

Refer to protection notice ISO 16016

1 2 3 4 5 6 7 8

-HG1

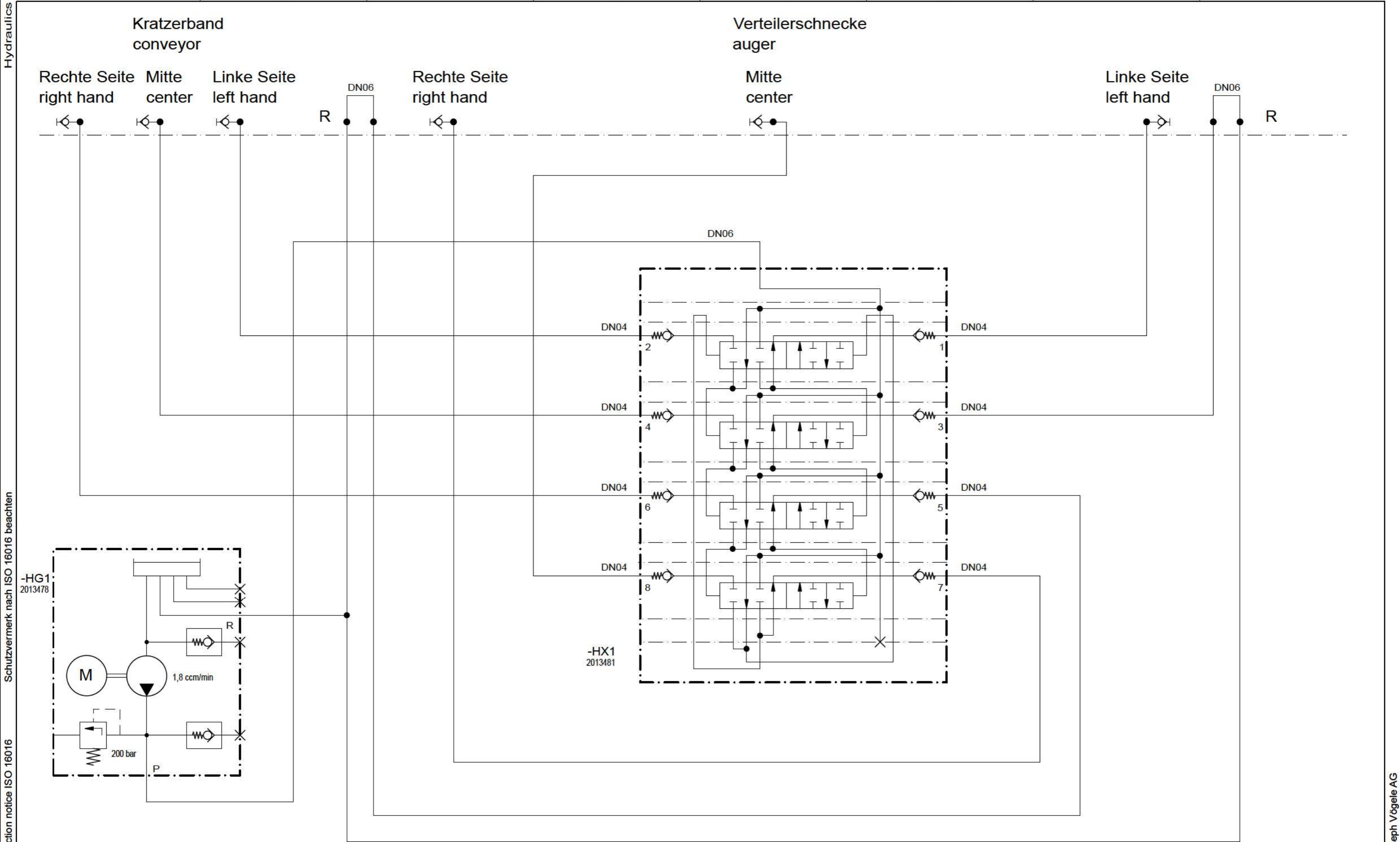
-HX1



Drawing by:		Approved by:		last change:		Status:				Document No.: Partial Document No.: Version No.:		Topologie topologie		Sheet				
date 12.03.2014		date 06.06.2014		date		SF AE =changable PF =prototype release SF =serial release				Material No.: 2342386				Series code: 1582		Valid for Serial No.: from 0010 to XXXX		3 of
name Keilmann		name Holzmann		name						Revision No.: 00				Sheet plant:		Sheet Location:		
E - CAE		Document type: <b>FFP</b>		Function group No.:														

1 2 3 4 5 6 7 8

© 2014 by Joseph Vögele AG



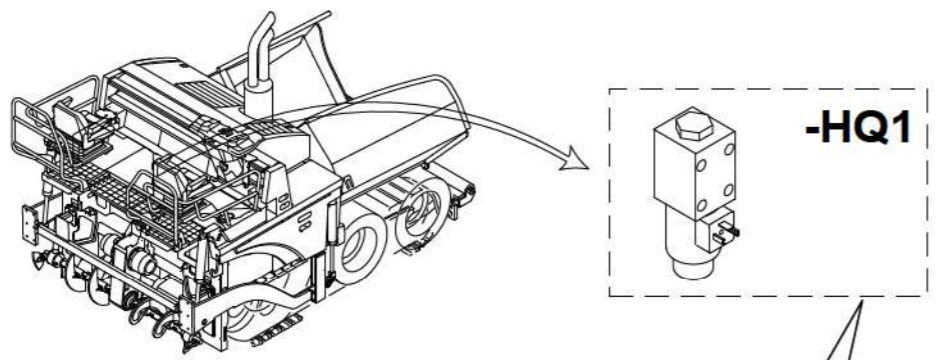
Drawing by:		Approved by:		last change:		Status:		Material No.:		Document No.: Partial Document No.: Version No.:		Sheet	
date	12.03.2014	date	06.06.2014	date		SF AE=changable		2342386				4	
name	Keilmann	name	Holzmann	name		PF=prototype release		Revision No.:				of	
E - CAE		Document type:		Function group No.:		SF=serial release		00				8	
FFP												Sheets	



Fettschmieranlage  
grease lubrication

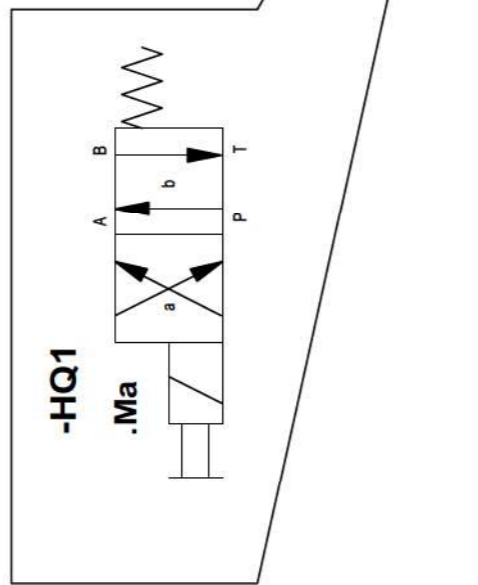
Hydraulics  
Schutzvermerk nach ISO 16016 beachten  
Refer to protection notice ISO 16016  
© 2014 by Joseph Vögele AG

# Aufbau Betriebsmittelkennzeichen / device designation configuration



- Art / Zählnummer  
type / number

. Spulenbezeichnung  
coil designation



Drawing by:		Approved by:		last change:	
date	12.03.2014	date	06.06.2014	date	
name	Keilmann	name	Holzmann	name	
E - CAE		Document type:		Function group No.:	
		<b>FFP</b>			

Status:	Material No.:
<b>SF</b> AE =changable	2342386
PF =prototype release	Revision No.:
SF =serial release	00






Document No.:		Partial Document No.:		Version No.:	
Series code:	Valid for Serial No.:				
1582	from 0010 to XXXX				
Sheet plant:					
Sheet Location:					

Erklärung Aufbau Betriebsmittelkennzeichen  
Explanation device designation layout

## Gerätekenbuchstaben, hydraulisch (beispielhaft) / device code letter, hydraulic (exemplified)

<u>Gerätekenbuchstabe / device code letter</u>	<u>Deutsch</u>	<u>English</u>	<u>Gerätekenbuchstabe / device code letter</u>	<u>Deutsch</u>	<u>English</u>
- HA	Ventilblock	valve-block	- HP	Manometer	pressure gauge
- HB	Durchflussmesser Durchflusswächter Druckschalter hydraulisch	flow measuring device flow controller hydraulic pressure switch	- HQ	Bremsventil Kugelhahn Lenkeinheit Wegeventil	braking valve ball valve steering unit direction control valve
- HC	Speicher	accumulator	- HR	Drosselventil Drosselrückschlagventil Druckreduzierventil Lasthalteventil Rückschlagventil	throttle valve throttle check valve pressure reduction valve counter balance valve check valve
- HE	Kühler	cooler	- HT	Getriebe	gearbox
- HF	Druckbegrenzungsventil	pressure limiting valve	- HV	Hydraulikfilter	hydraulic filter
- HG	Hydraulikpumpe	hydraulic pump	- HX	Abdeckplatten Reihenflanschplatte Schnellkupplung	cover plates manifold plate quick-action coupling
- HK	Mengenteiler Prioritätsventil Stromregelventil	flow divider priority valve flow control valve	- Ma	Ventil Magnetspule a	valve coil a
- HM	Hydraulikmotor Hydraulikzylinder	hydraulic motor hydraulic cylinder	- Mb	Ventil Magnetspule b	valve coil b

Drawing by:	Approved by:	last change:	Status:	Material No.:	Document No.:	Partial Document No.:	Version No.:	Erklärung Gerätekenbuchstaben, hydraulisch Explanation device code letter, hydraulic	Sheet
date 12.03.2014	date 06.06.2014	date	SF	2342386					6
name Keilmann	name Holzmann	name		AE =changable	Revision No.:				
E - CAE	Document type: <b>FFP</b>	Function group No.:	PF =prototype release	00	Series code:	Valid for Serial No.:			8
				<b>VÖGELE</b>		1582	from 0010 to XXXX		8
						Sheet plant:			
						Sheet Location:			

Linienformate / line formats			Leitungsbezeichnungen / line designations		
<u>Linienart / line type</u>	<u>Linienstärke / Grafik / line thickness / graphic</u>	<u>Bedeutung / standing</u>	<u>Abkürzungen Leitungsbezeichnungen / line designation abbreviations</u>	<u>Deutsch</u>	<u>English</u>
Volllinie / solid line	 0,25mm	Standard, Druckleitung, Tankleitung / standard, pressure line, tank line	P	Druckleitung	pressure line
			T	Tankleitung, Rücklaufleitung	tank line, return line
Strichpunktlinie / dash-dotted line	 0,5mm	Bauteilumrandung / component border	S	Saugleitung	suction line
			L	Leckölleitung	leakage line
Strichlinie / dashed line	 0,25mm	Steuerleitung, Lecköl / control line, leakage oil	X	Steuerleitung	control line
			LS	Load Sensing Leitung	load sensing line

Drawing by:		Approved by:		last change:		Status:		Material No.:		Document No.: Partial Document No.: Version No.:		Erklärung Linienformate, Leitungsbezeichnungen explanation line formats, line designations	Sheet 7 of 8 Sheets
date	12.03.2014	date	06.06.2014	date		SF	AE =changable	2342386	Series code:	Valid for Serial No.:	from 0010 to XXXX		
name	Keilmann	name	Holzmann	name			PF =prototype release	Revision No.:	00	Sheet plant:			
E - CAE		Document type:		Function group No.:		VÖGELE		Sheet Location:					
FFP													

Hydraulics  
Schutzvermerk nach ISO 16016 beachten  
Refer to protection notice ISO 16016

1 2 3 4 5 6 7 8

Betriebsmittelkennzeichen / Device designation	Blatt / Sheet	Betriebsmittelkennzeichen / Device designation	Blatt / Sheet	Betriebsmittelkennzeichen / Device designation	Blatt / Sheet
-HG1 -HX1	/4.1 /4.6				

Drawing by:		Approved by:		last change:		Status:		Material No.:		Document No.: Partial Document No.: Version No.:		Sheet			
date	12.03.2014	date	06.06.2014	date		SF	AE =changable	2342386				8			
name	Keilmann	name	Holzmann	name			PF =prototype release	Revision No.:		Series code:		Valid for Serial No.:		of	
E - CAE		Document type:		Function group No.:			SF =serial release	00		1582		from 0010 to XXXX		8	
		HFP								Sheet plant:				8	
										Sheet Location:				Sheets	

1 2 3 4 5 6 7 8

© 2014 by Joseph Vögele AG

Betriebsmittelliste  
device list