

Hydraulikplan Hydraulic diagram

Super 700-3 / 700-3i
Super 800-3 / 800-3i

0890
Baureihe /
Series

0455 - XXXX
Seriennummer /
Serial No

13.04.2017
Ausgabedatum /
Date of issue

HFP_0890_2548152_00_00_01
Katalog Bestellnummer /
Catalogue order No

Schutzvermerk nach ISO 16016

Weitergabe sowie Vervielfältigung dieses Dokuments, Verwertung und Mitteilung seines Inhalts sind verboten, soweit nicht ausdrücklich gestattet.

Zuwiderhandlungen verpflichten zum Schadenersatz. Alle Rechte für den Fall der Patent-, Gebrauchsmuster- oder Geschmacksmustereintragung vorbehalten.

Protection Notice ISO 16016

The reproduction, distribution and utilization of this document as well as the communication of its contents to others without explicit authorization is prohibited.

Offenders will be held liable for the payment of damages. All rights reserved in the event of the grant of a patent, utility model or design.

Hydraulics
Schutzvermerk nach ISO 16016 beachten
Refer to protection notice ISO 16016
© 2016 by Joseph Vögele AG

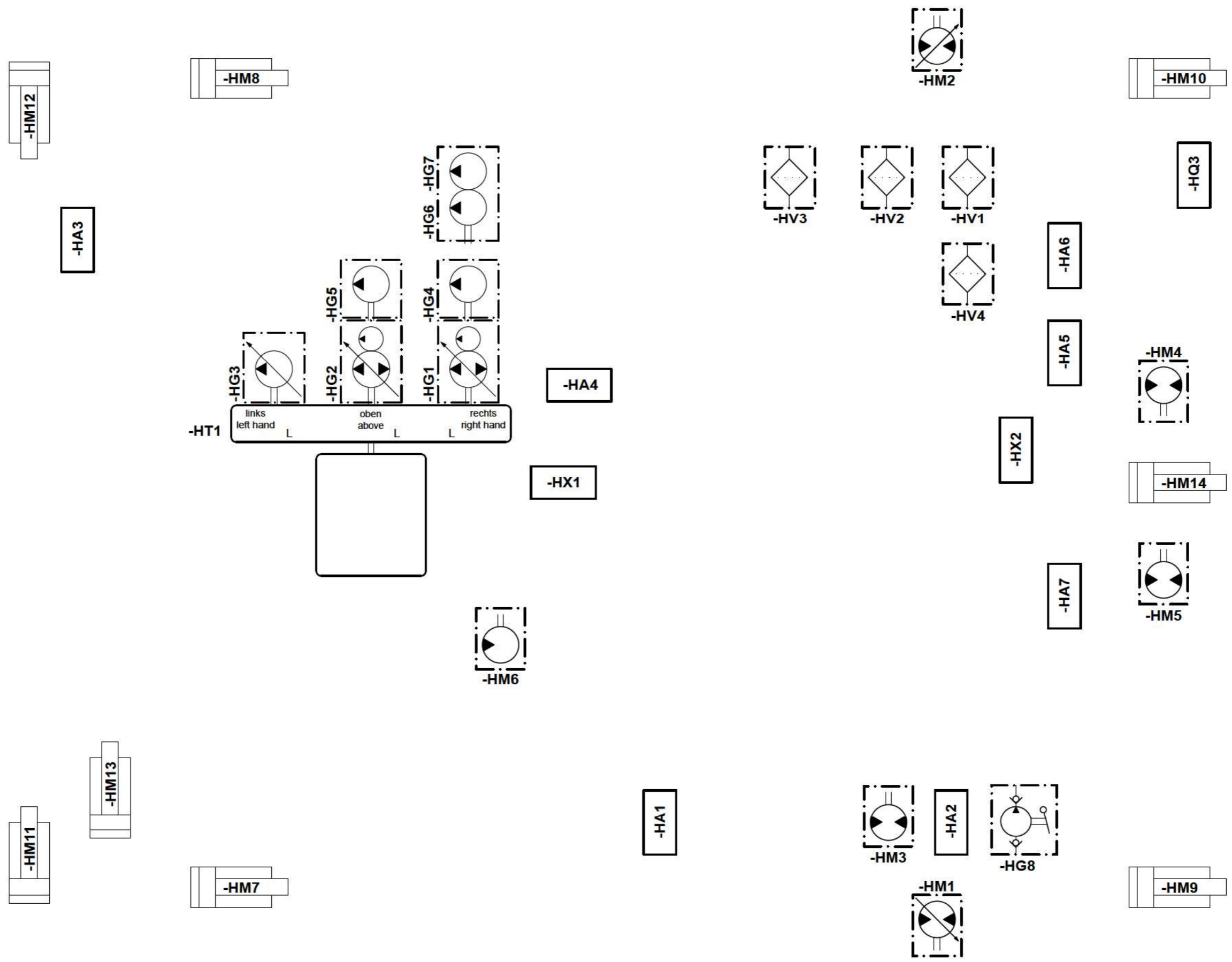
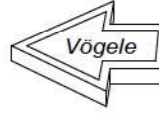
Blatt / Sheet	Inhalt / Contents	Blatt / Sheet	Inhalt / Contents
1	Deckblatt cover sheet	15	Filter filter
2	Inhaltsverzeichnis contents	16	Lecköl leakage oil
3	Topologie topology	17	Rückläufe Saugleitungen return flows suction lines
4	Pumpenanordnung pump position	18	Erklärung Aufbau Betriebsmittelkennzeichen Explanation device designation layout
5	Fahrtrieb links propel system left hand	19	Erklärung Gerätekenbuchstaben, hydraulisch Explanation device code letter, hydraulic
6	Fahrtrieb rechts propel system right hand	20	Erklärung Linienformate, Leitungsbezeichnungen explanation line formats, line designations
7	Abschleppvorrichtung-Bremse tow system-brake	21...22	Betriebsmittelliste device list
8	Verteilerschnecke-Förderband-Lüfterantrieb auger-conveyor-fan drive		
9	Verteilerschnecke-Förderband auger-conveyor		
10	Zylinderfunktionen Fertiger cylinder functions paver		
11	Zylinderfunktionen Fertiger/Bohle cylinder functions paver/screed		
12	Höhenverstellung Verteilerschnecke height adjustment auger		
13	Tamper tamper		
14	Bohlenentlastung screed assist		

Drawing by:		Approved by:		last change:		Status:		Material No.:		Document No.: Partial Document No.: Version No.:		Sheet		
date	03.08.2016	date	13.04.2017	date		SF	AE =changable	2548152	Series code:		Valid for Serial No.:		Inhaltsverzeichnis contents	
name	Letz	name	Holzmann	name			PF =prototype release	Revision No.:	00	0890	from 0455 to XXXX			2 of 22 Sheets
E - CAE		Document type:		Function group No.:			SF =serial release			Sheet plant:				
		HFP								Sheet Location:				

Schutzvermerk nach ISO 16016 beachten

Refer to protection notice ISO 16016

Hydraulics



Drawing by:		Approved by:		last change:	
date	03.08.2016	date	13.04.2017	date	
name	Letz	name	Holzmann	name	
E - CAE		Document type:		Function group No.:	
		HFP			

Status:
SF AE =changable
 PF =prototype release
 SF =serial release

Material No.: 2548152
 Revision No.: 00

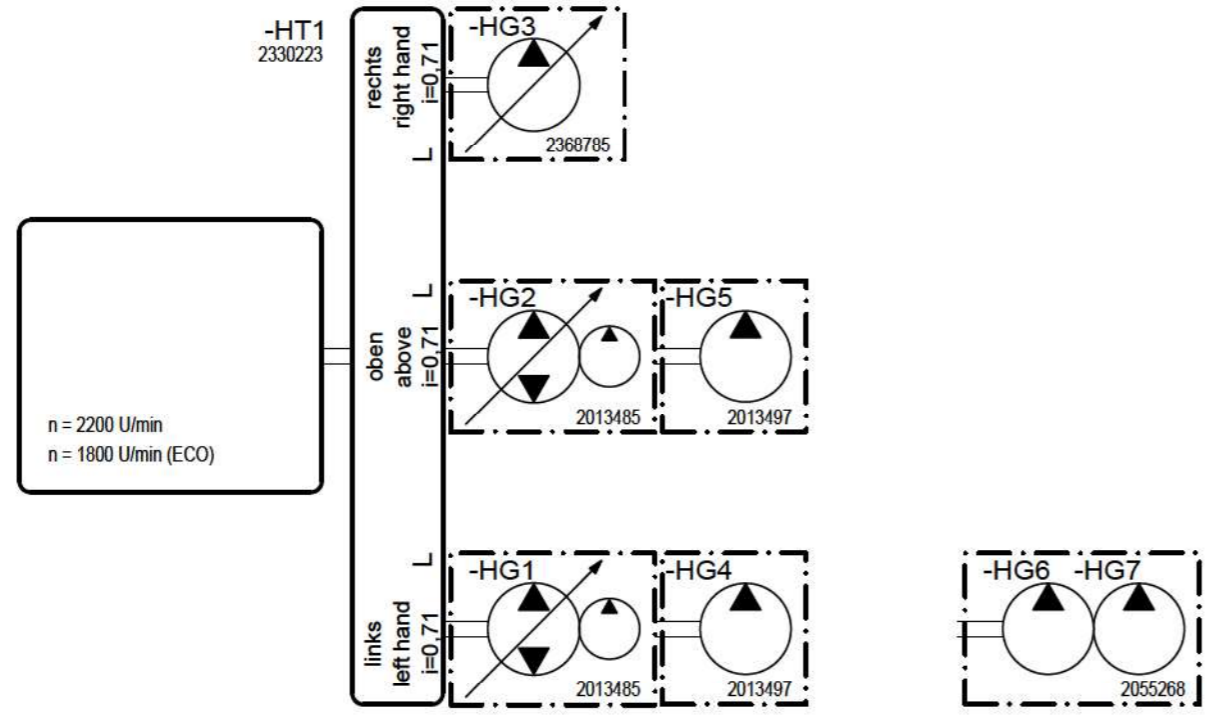


Document No.:		Partial Document No.:		Version No.:	
Series code:	0890	Valid for Serial No.:	from 0455 to XXXX		
Sheet plant:					
Sheet Location:					

Topologie
topology

Sheet
3
 of
22 Sheets

© 2016 by Joseph Vögele AG



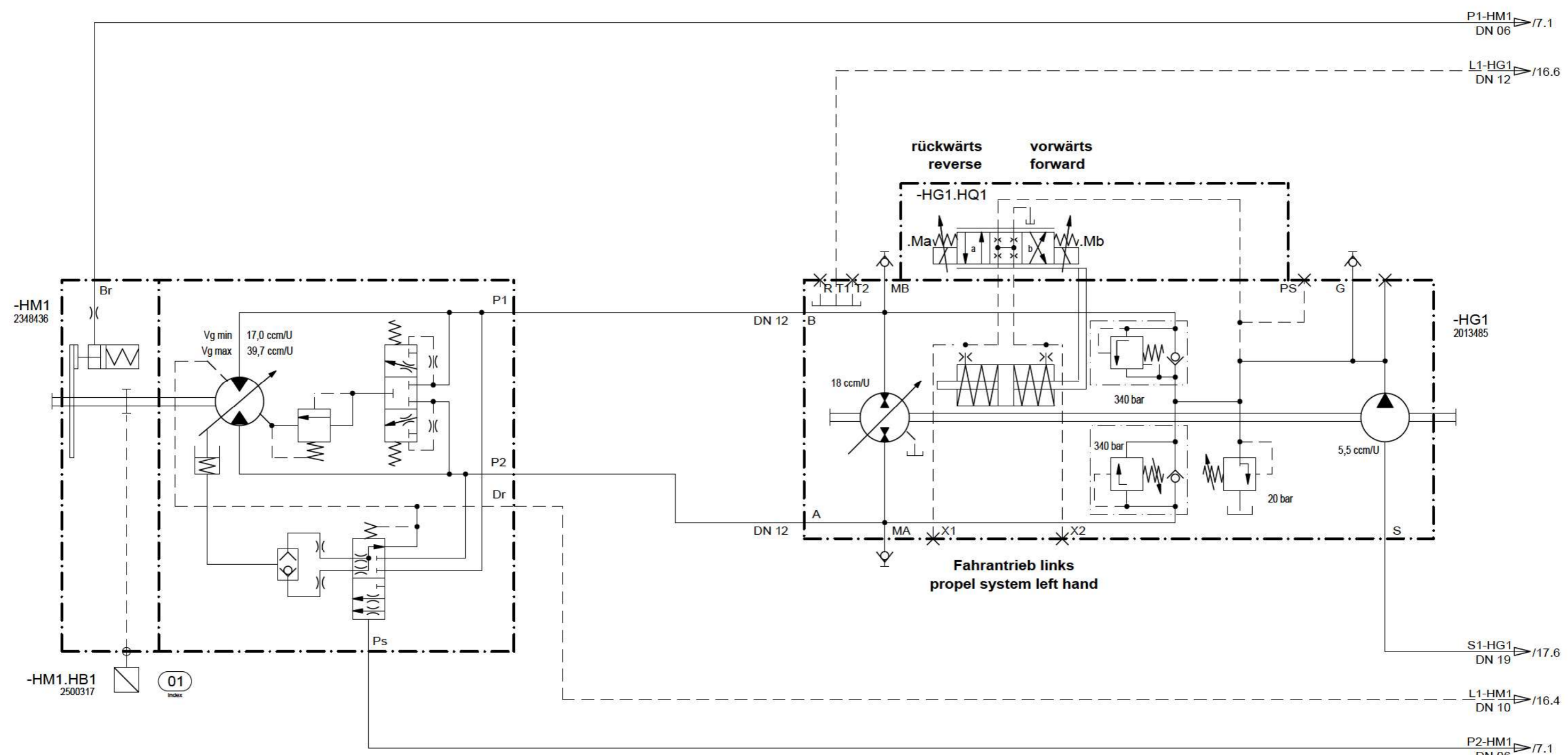
- HG1** Fahrtrieb links
propel system left hand
- HG2** Fahrtrieb rechts
propel system right hand
- HG3** Verteilerschnecke-Förderband-Vibration
auger-conveyor-vibration
- HG4** Lüfterantrieb, Einspeisung Verteilerschnecke-Förderband-Vibration (Super 700-3 / 700-3i)
fan drive, supply auger-conveyor-vibration (Super 700-3 / 700-3i)
- HG5** Zylinderfunktionen
cylinder functions
- HG6** Lüfterantrieb, Einspeisung Verteilerschnecke-Förderband-Vibration (Super 800-3 / 800-3i)
fan drive, supply auger-conveyor-vibration (Super 800-3 / 800-3i)
- HG7** Tamper (Super 800-3 / 800-3i)
tamper (Super 800-3 / 800-3i)



Drawing by:		Approved by:		last change:		Status:		Material No.:		Document No.: Partial Document No.: Version No.:		Sheet	
date	03.08.2016	date	13.04.2017	date		SF	AE =changable	2548152				4	
name	Letz	name	Holzmann	name			PF =prototype release	Revision No.:				of	
E - CAE		Document type:		Function group No.:			SF =serial release	00				22	
HFP								VÖGELE		Series code:		Valid for Serial No.:	
										0890		from 0455 to XXXX	
										Sheet plant:			
										Sheet Location:			

Pumpenanordnung
pump position

Hydraulics
Schutzvermerk nach ISO 16016 beachten
Refer to protection notice ISO 16016
© 2016 by Joseph Vögele AG



Drawing by:		Approved by:		last change:	
date	03.08.2016	date	13.04.2017	date	13.04.2017
name	Letz	name	Holzmann	name	Holzmann
E - CAE		Document type:		Function group No.:	
		HFP			

Status:
SF AE=changable
 PF=prototype release
 SF=serial release

Material No.: 2548152
 Revision No.: 00

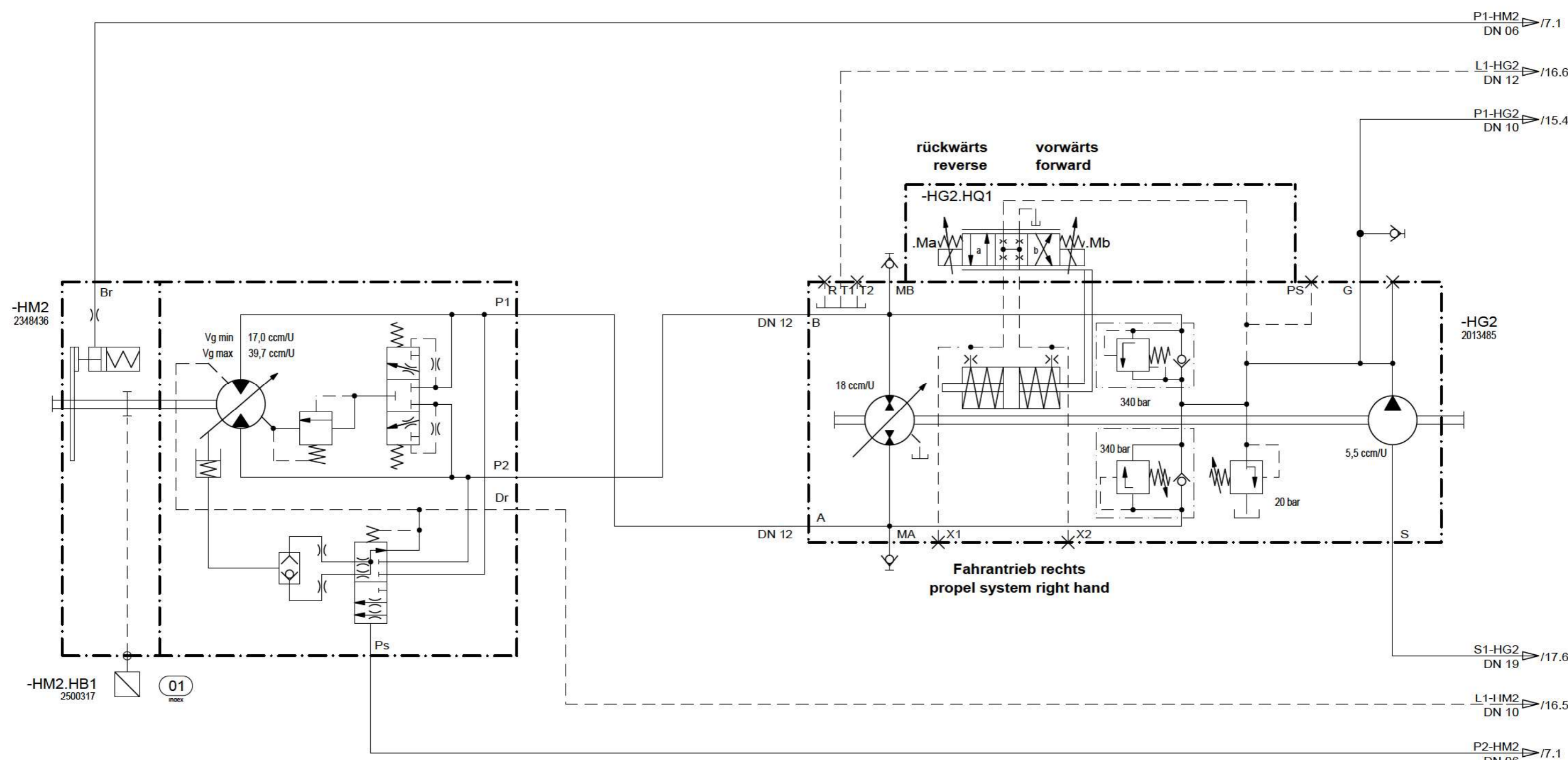


Document No.: Partial Document No.: Version No.:
 Series code: 0890 Valid for Serial No.: from 0455 to XXXX
 Sheet plant:
 Sheet Location:

Fahrtrieb links
 propel system left hand

Sheet
5
 of
22 Sheets

Hydraulics
Schutzvermerk nach ISO 16016 beachten
Refer to protection notice ISO 16016
© 2016 by Joseph Vögele AG



Drawing by:		Approved by:		last change:	
date	03.08.2016	date	13.04.2017	date	13.04.2017
name	Letz	name	Holzmann	name	Holzmann
E - CAE		Document type:		Function group No.:	
		HFP			

Status:
SF AE=changable
 PF=prototype release
 SF=serial release

Material No.: 2548152
 Revision No.: 00

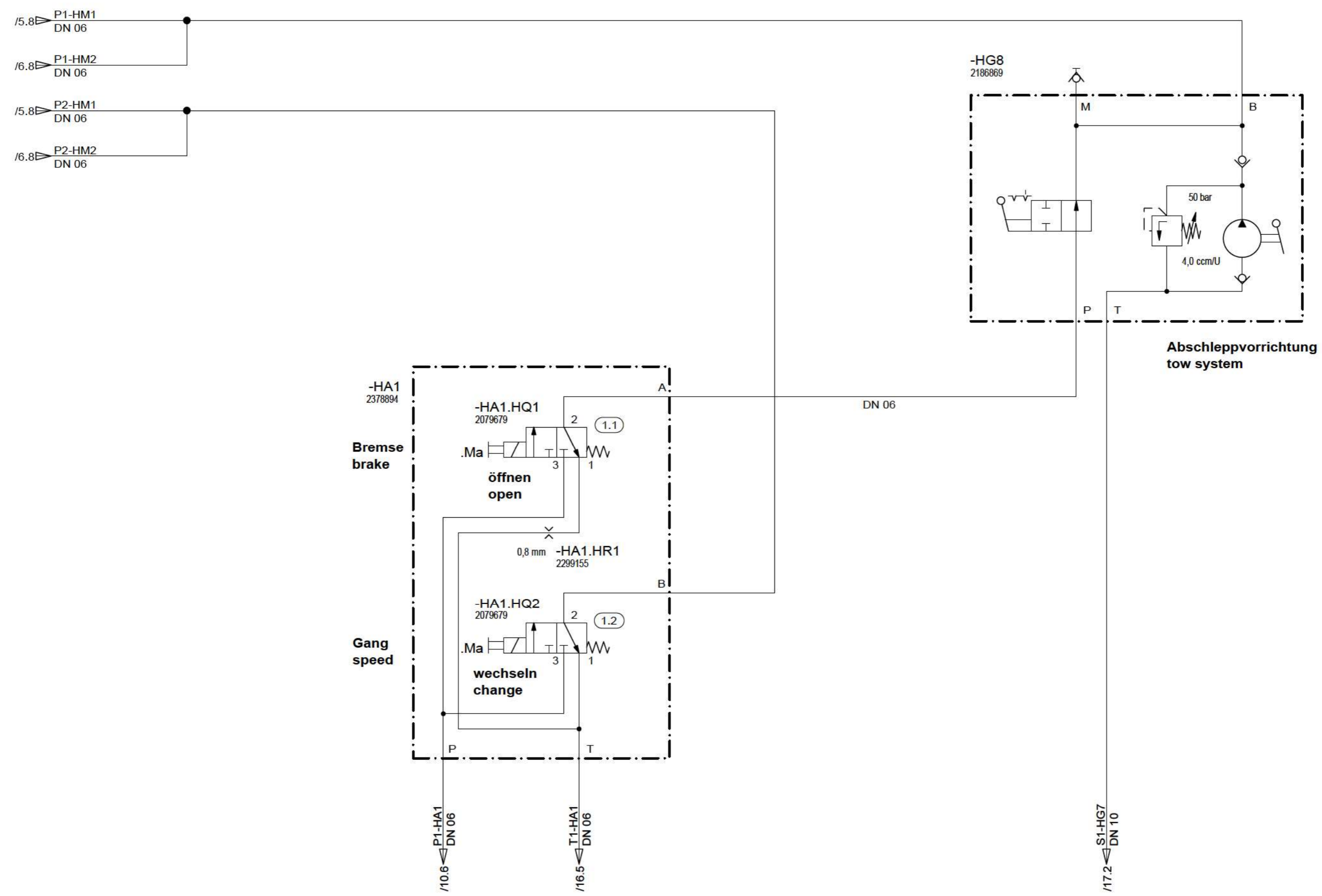


Document No.: Partial Document No.: Version No.:
 Series code: 0890 Valid for Serial No.: from 0455 to XXXX
 Sheet plant:
 Sheet Location:

**Fahrtrieb rechts
 propel system right hand**

Sheet
6
 of
22 Sheets

Hydraulics
Schutzvermerk nach ISO 16016 beachten
Refer to protection notice ISO 16016
© 2016 by Joseph Vögele AG



Drawing by:		Approved by:		last change:	
date	03.08.2016	date	13.04.2017	date	
name	Letz	name	Holzmann	name	
E - CAE		Document type:		Function group No.:	
		HFP			

Status: **SF**
 AE = changable
 PF = prototype release
 SF = serial release

Material No.: 2548152
 Revision No.: 00



Document No.: Partial Document No.: Version No.:
 Series code: 0890 Valid for Serial No.: from 0455 to XXXX
 Sheet plant:
 Sheet Location:

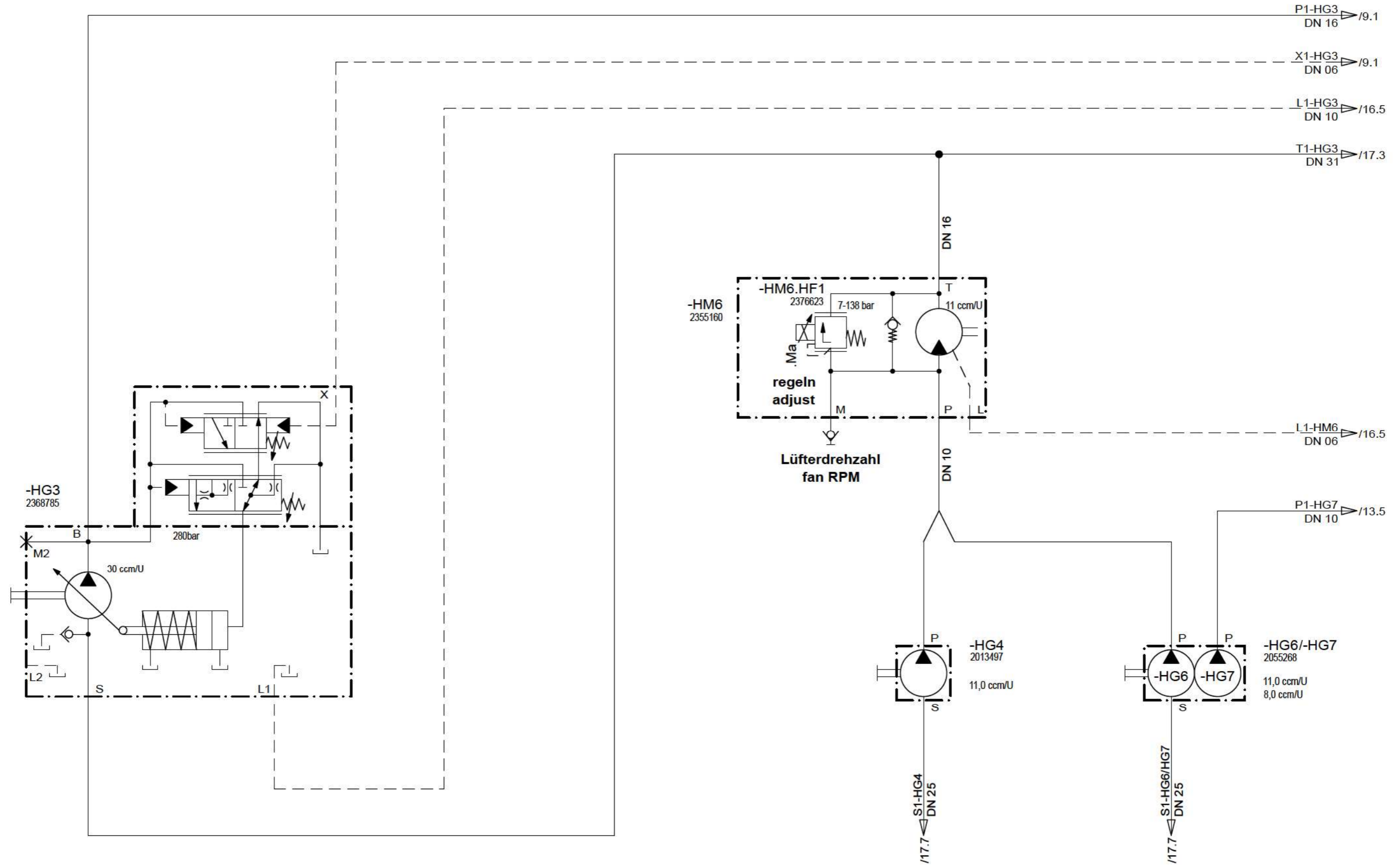
Abschleppvorrichtung-Bremse
 tow system-brake

Sheet 7 of 22
 of 22 Sheets

Hydraulics

Schutzvermerk nach ISO 16016 beachten

Refer to protection notice ISO 16016



Drawing by:		Approved by:		last change:	
date	03.08.2016	date	13.04.2017	date	
name	Letz	name	Holzmann	name	
E - CAE		Document type:		Function group No.:	
		HFP			

Status:
SF AE = changable
 PF = prototype release
 SF = serial release

Material No.: 2548152
 Revision No.: 00



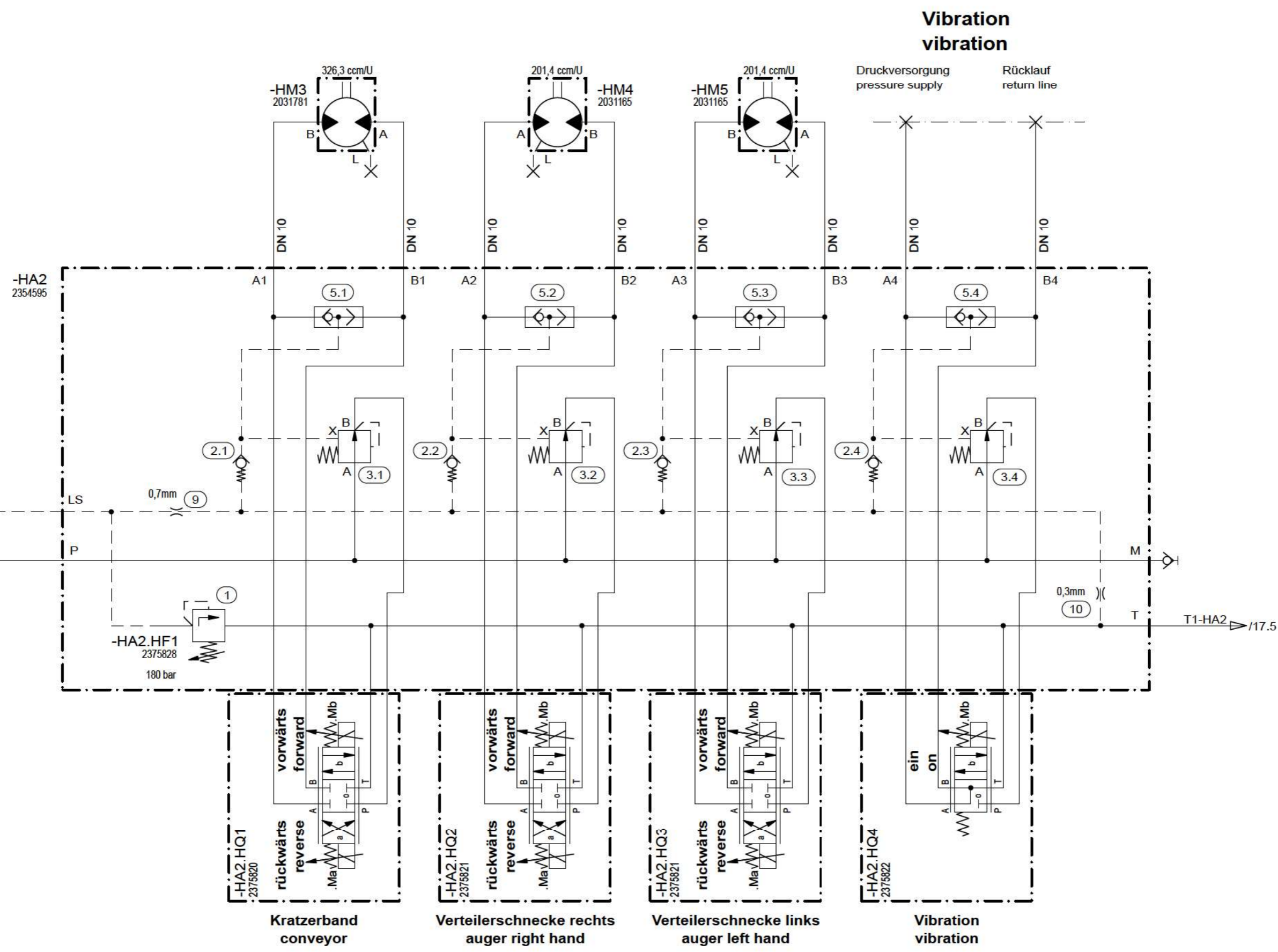
Document No.: Partial Document No.: Version No.:	
Series code: 0890	Valid for Serial No.: from 0455 to XXXX
Sheet plant: Sheet Location:	

Verteilerschnecke-Förderband-Lüfterantrieb
auger-conveyor-fan drive

Sheet
8
 of
22 Sheets

© 2016 by Joseph Vögele AG

Hydraulics
Schutzvermerk nach ISO 16016 beachten
Refer to protection notice ISO 16016
© 2016 by Joseph Vögele AG



Drawing by:		Approved by:		last change:	
date	03.08.2016	date	13.04.2017	date	
name	Letz	name	Holzmann	name	
E - CAE		Document type:		Function group No.:	
		HFP			

Status:
SF AE = changable
 PF = prototype release
 SF = serial release

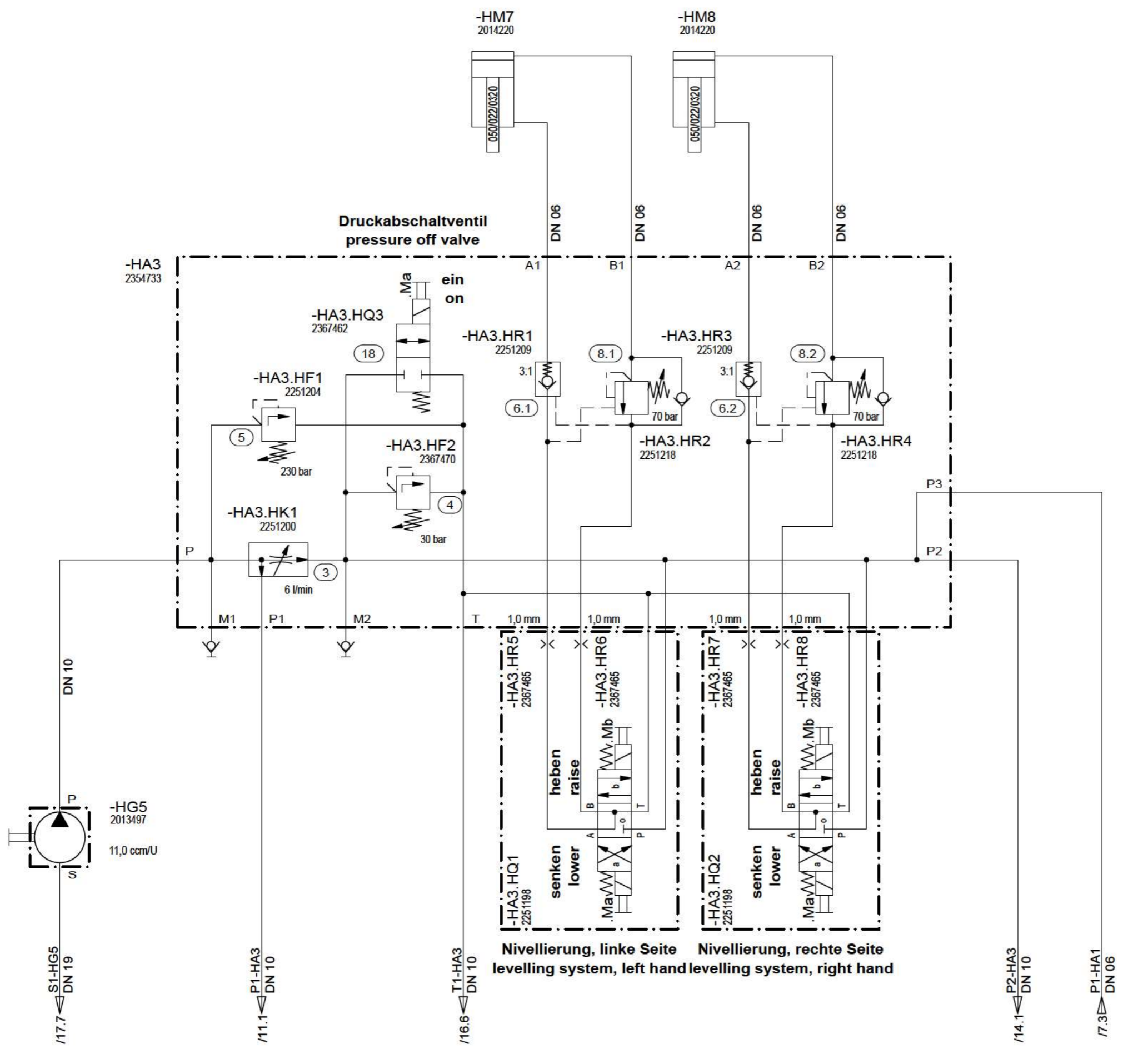
Material No.: 2548152
 Revision No.: 00



Document No.: Partial Document No.: Version No.:
 Series code: 0890 Valid for Serial No.: from 0455 to XXXX
 Sheet plant:
 Sheet Location:

Verteilerschnecke-Förderband
 auger-conveyor

Hydraulics
Schutzvermerk nach ISO 16016 beachten
Refer to protection notice ISO 16016
© 2016 by Joseph Vögele AG



Drawing by:		Approved by:		last change:		Status:		Material No.:		Document No.: Partial Document No.: Version No.:	
date	03.08.2016	date	13.04.2017	date		SF AE = changable PF = prototype release SF = serial release		2548152		Series code: 0890 Valid for Serial No.: from 0455 to XXXX	
name	Letz	name	Holzmann	name				Revision No.: 00		Sheet plant: Sheet Location:	
E - CAE		Document type: HFP		Function group No.:						Zylinderfunktionen Fertiger cylinder functions paver	

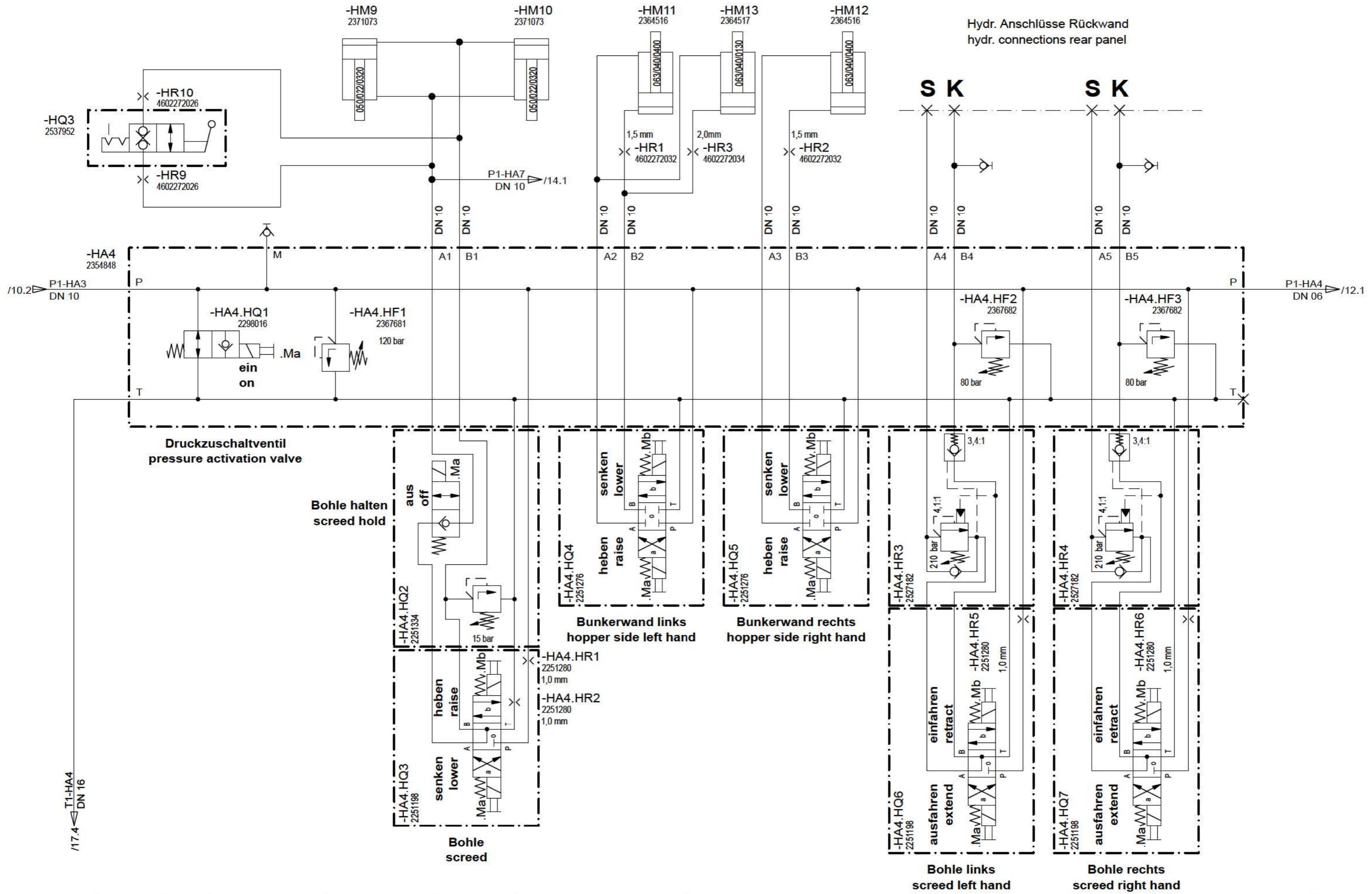
SF

VÖGELE

Document No.: Partial Document No.: Version No.:
Series code: 0890 Valid for Serial No.: from 0455 to XXXX
Sheet plant: Sheet Location:

Zylinderfunktionen Fertiger
cylinder functions paver

Sheet 10 of 22 Sheets



Schutzvermerk nach ISO 16016 beachten

Refer to protection notice ISO 16016

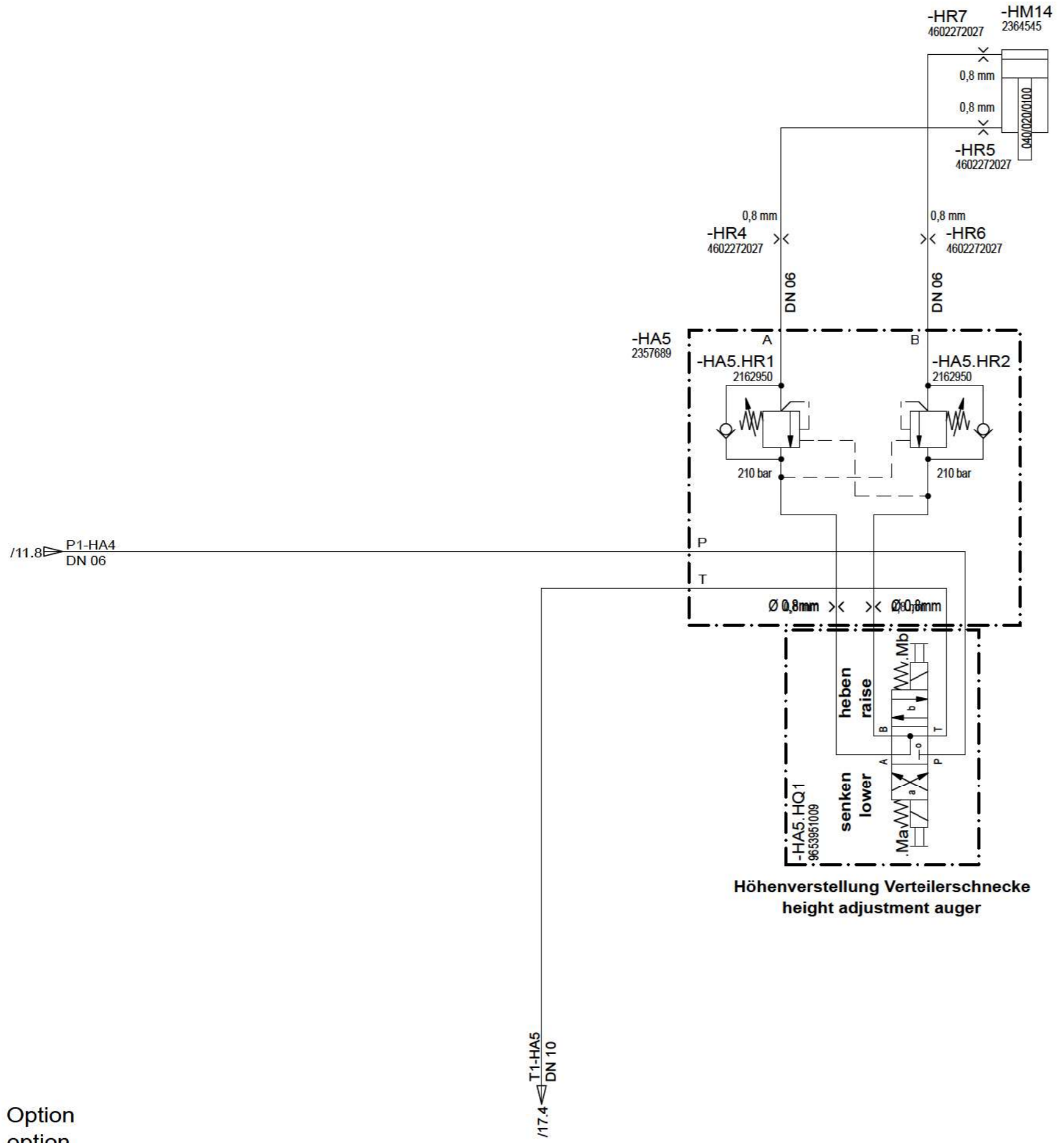
Drawing by:		Approved by:		last change:		Status:		Material No.:	
date	03.08.2016	date	13.04.2017	date		SF AE=changable		2548152	
name	Letz	name	Holzmann	name		PF=prototype release		Revision No.:	
E - CAE		Document type:		Function group No.:		SF=serial release		00	
		HFP							

W VÖGELE

Document No.: Partial Document No.: Version No.:		
Series code:	Valid for Serial No.:	
0890	from 0455 to XXXX	
Sheet plant:		
Sheet Location:		

Zylinderfunktionen Fertiger/Bohle
cylinder functions paver/screed

Hydraulics
Schutzvermerk nach ISO 16016 beachten
Refer to protection notice ISO 16016
Option
option



Drawing by:		Approved by:		last change:	
date	03.08.2016	date	13.04.2017	date	
name	Letz	name	Holzmann	name	
E - CAE		Document type:		Function group No.:	
		HFP			

Status:
SF AE =changable
 PF =prototype release
 SF =serial release

Material No.:
2548152
 Revision No.:
00



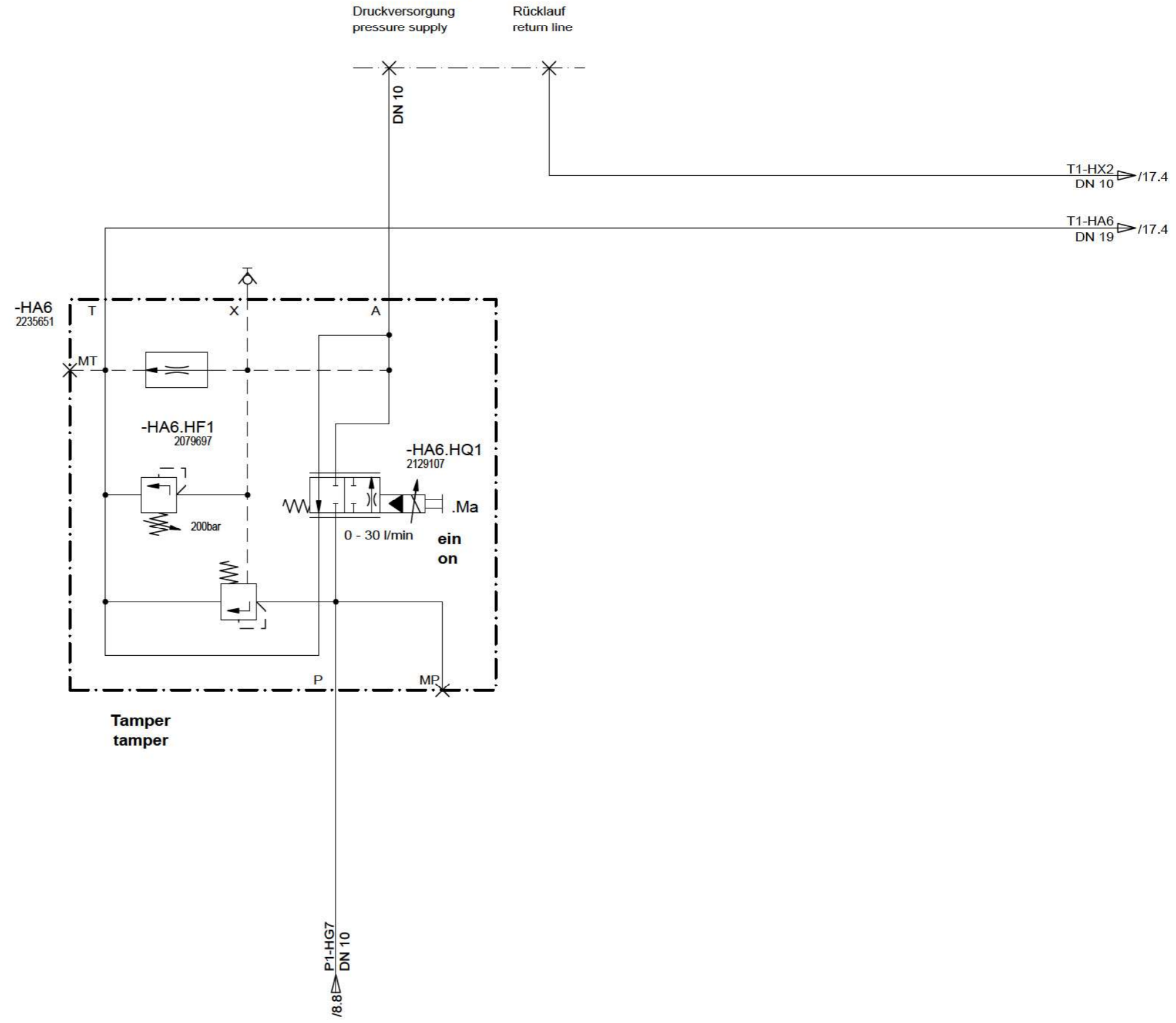
Document No.: Partial Document No.: Version No.:
 Series code: 0890 Valid for Serial No.:
 from 0455 to XXXX
 Sheet plant:
 Sheet Location:

Höhenverstellung Verteilerschnecke
height adjustment auger

Sheet
of
12
of
22 Sheets

Hydraulics
Schutzvermerk nach ISO 16016 beachten
Refer to protection notice ISO 16016
© 2016 by Joseph Vögele AG

Tamper tamper



Drawing by:		Approved by:		last change:	
date	03.08.2016	date	13.04.2017	date	
name	Letz	name	Holzmann	name	
E - CAE		Document type:		Function group No.:	
		HFP			

Status:
SF AE =changable
 PF =prototype release
 SF =serial release

Material No.:
2548152
 Revision No.:
00



Document No.: Partial Document No.: Version No.:
 Series code: 0890 Valid for Serial No.: from 0455 to XXXX
 Sheet plant:
 Sheet Location:

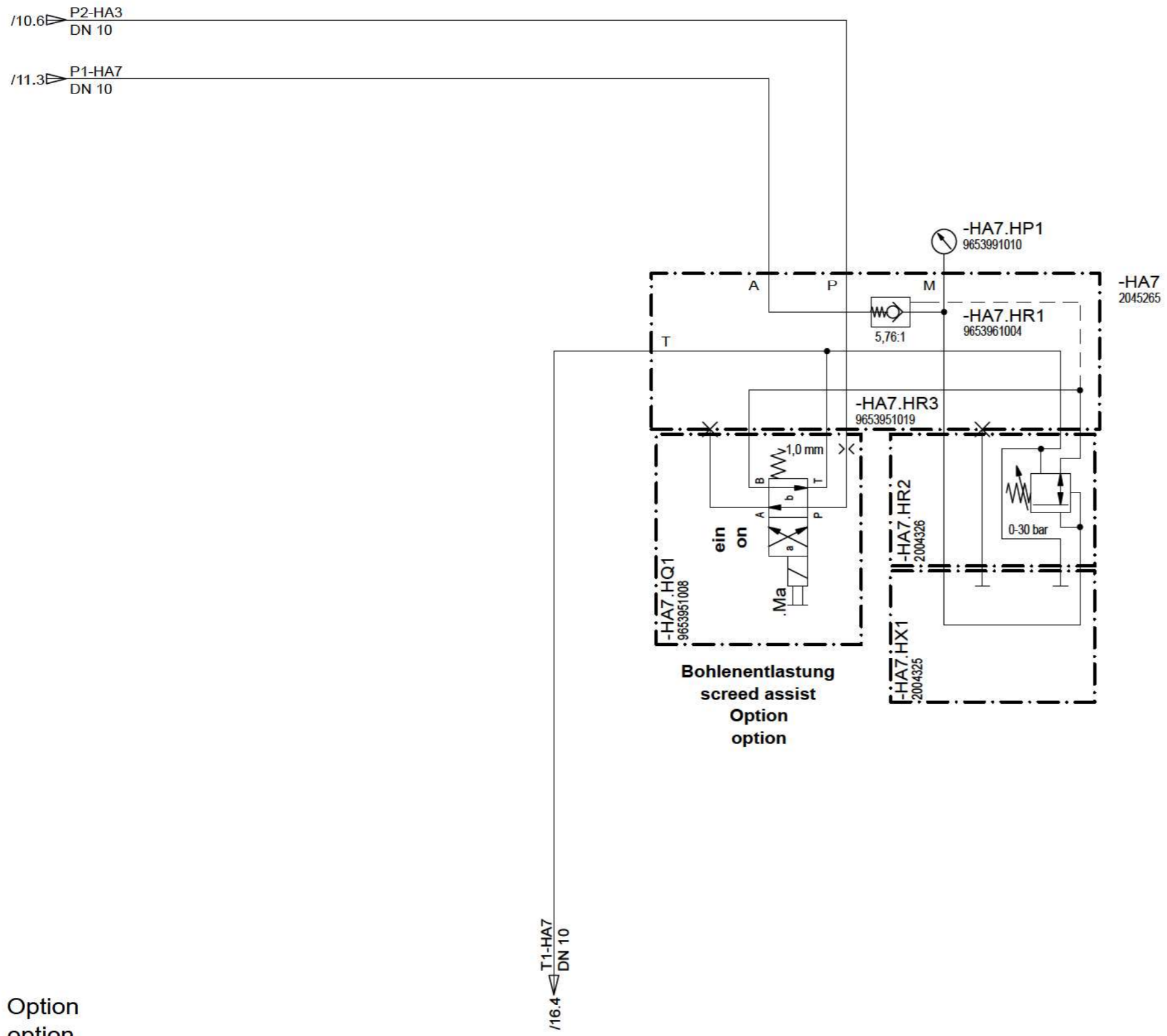
**Tamper
tamper**

Sheet
13
 of
22 Sheets

Hydraulics

Schutzvermerk nach ISO 16016 beachten

Refer to protection notice ISO 16016



Option option

Drawing by:		Approved by:		last change:	
date	03.08.2016	date	13.04.2017	date	
name	Letz	name	Holzmann	name	
E - CAE		Document type:		Function group No.:	
		HFP			

Status: **SF**
 AE = changable
 PF = prototype release
 SF = serial release

Material No.: 2548152
 Revision No.: 00



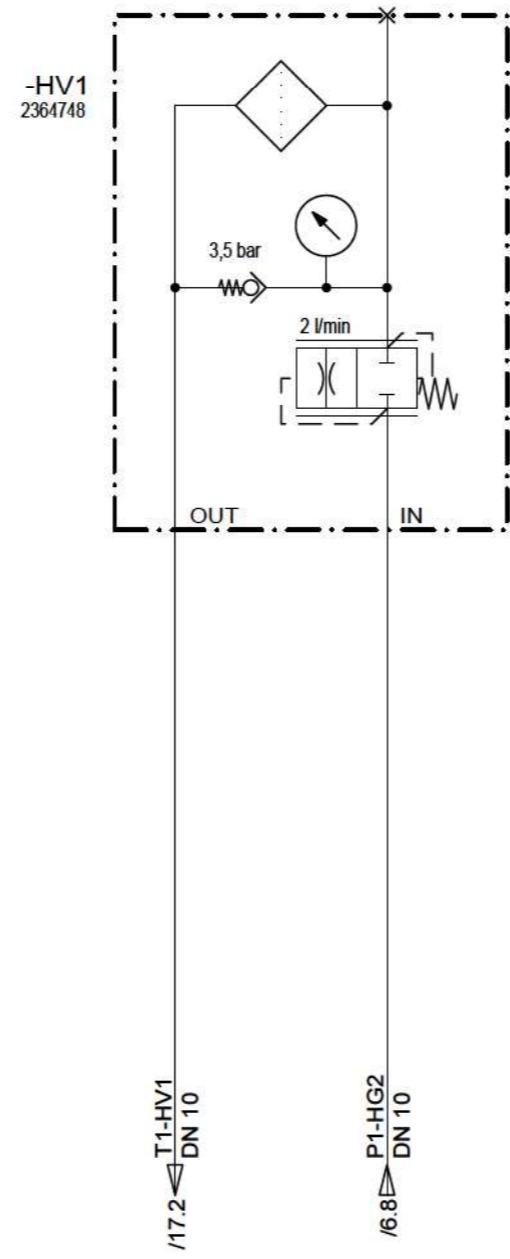
Document No.: Partial Document No.: Version No.:

Series code:	Valid for Serial No.:
0890	from 0455 to XXXX
Sheet plant:	
Sheet Location:	

Bohlenentlastung
screed assist

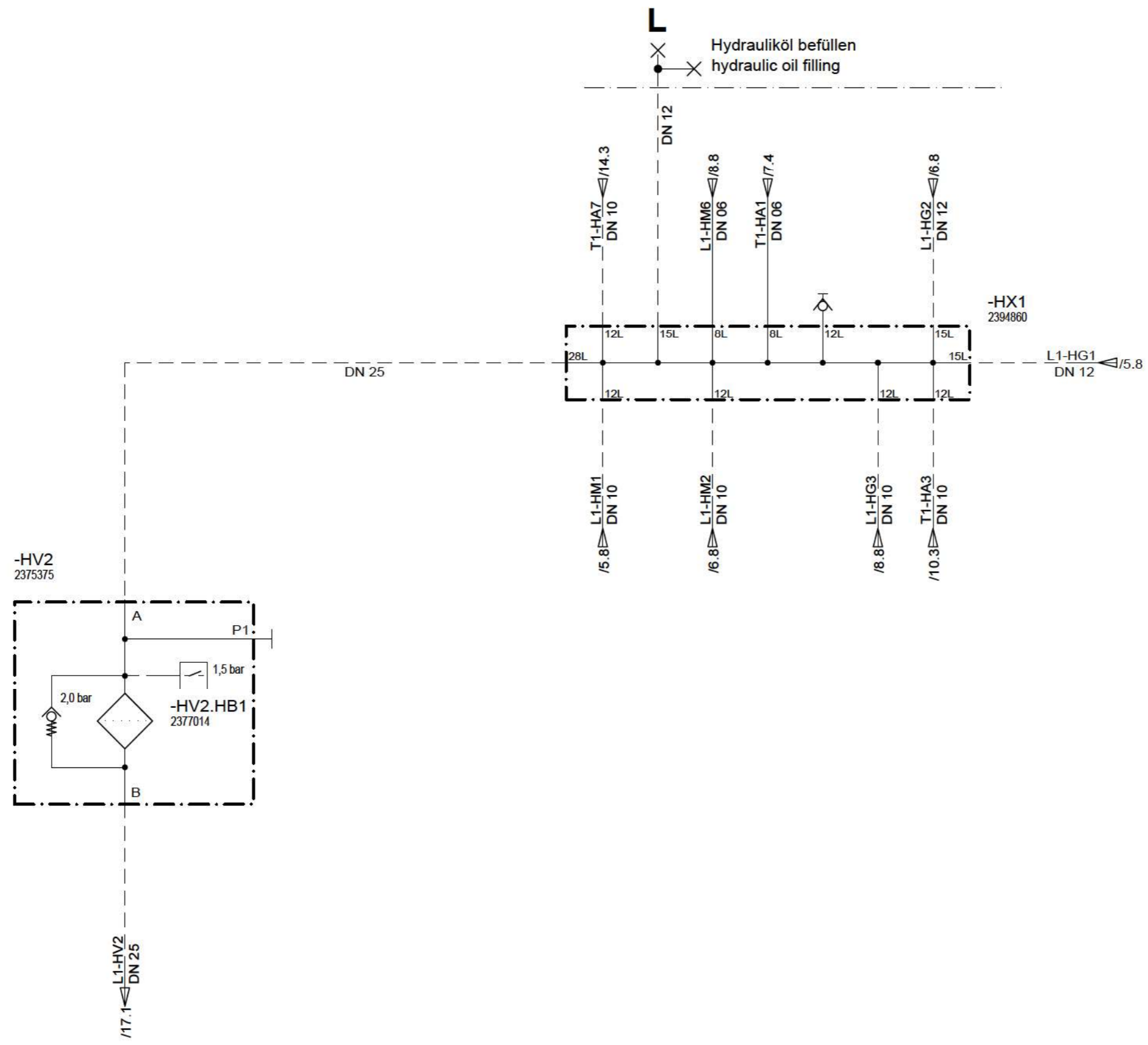
Sheet 14 of 22 Sheets

© 2016 by Joseph Vögele AG



Option
option

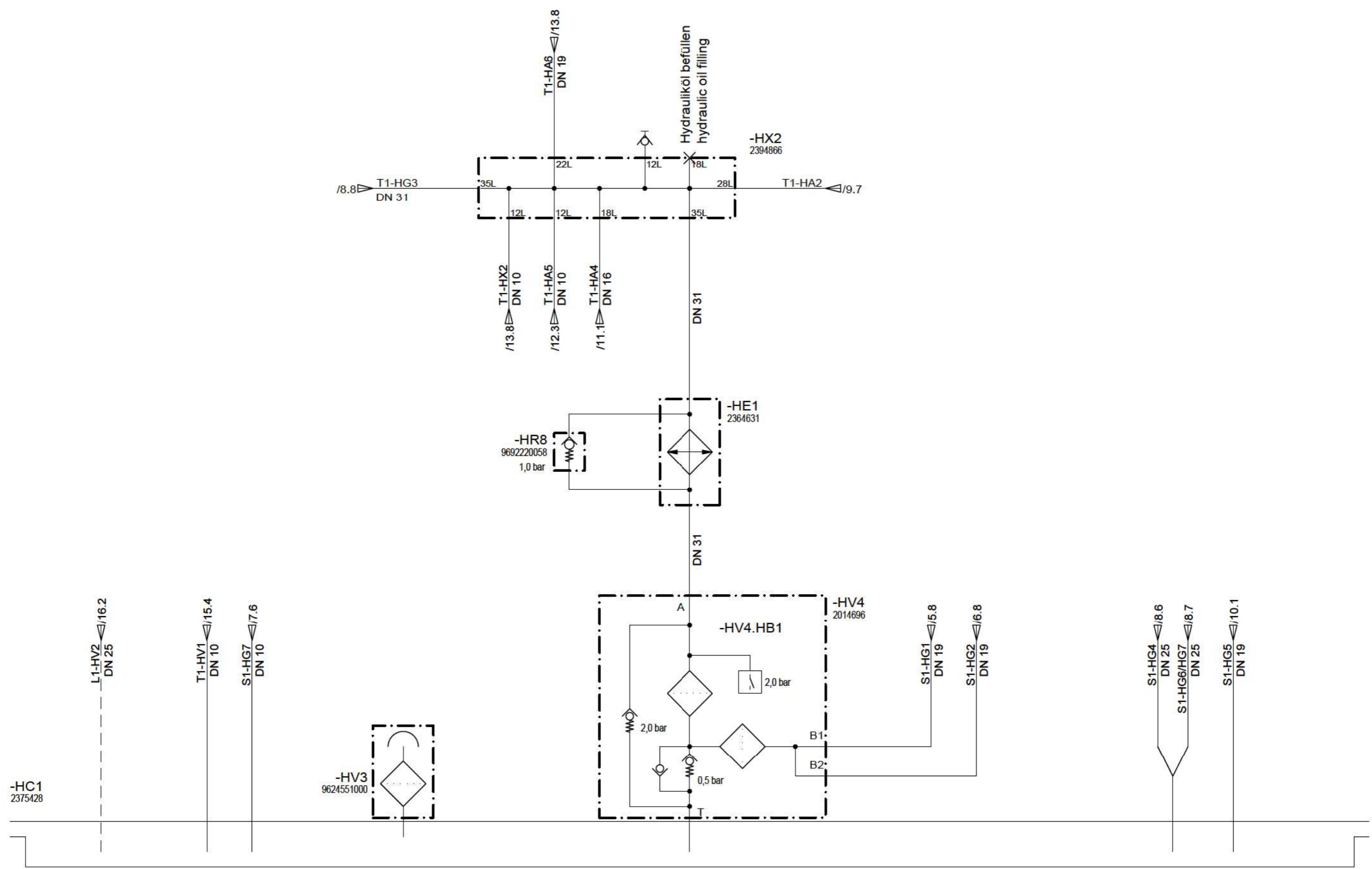
Drawing by:		Approved by:		last change:		Status:		Material No.:		Document No.:		Partial Document No.:		Version No.:		Filter		Sheet	
date	03.08.2016	date	13.04.2017	date		SF AE =changable		2548152		Series code:		Valid for Serial No.:				15		of	
name	Letz	name	Holzmann	name		PF =prototype release		Revision No.:		0890		from 0455 to		XXXX					
E - CAE		Document type:		Function group No.:		SF =serial release		00		Sheet plant:									
		HFP								Sheet Location:								22 Sheets	



Schutzvermerk nach ISO 16016 beachten

Refer to protection notice ISO 16016

Drawing by:		Approved by:		last change:		Status:		Material No.:		Document No.: Partial Document No.: Version No.:		Sheet 16 of 22 Sheets
date	03.08.2016	date	13.04.2017	date		SF AE =changable PF =prototype release SF =serial release	2548152	Series code:		Valid for Serial No.:		
name	Letz	name	Holzmann	name			00	0890		from 0455 to XXXX		
E - CAE		Document type:		Function group No.:				Sheet plant:		Sheet Location:		
HFP												



Drawing by:		Approved by:		last change:	
date	03.08.2016	date	13.04.2017	date	
name	Letz	name	Holzmann	name	
E - CAE		Document type:		Function group No.:	
		HFP			

Status:	AE = changable	Material No.:	2548152
SF	PF = prototype release	Revision No.:	00
	SF = serial release		

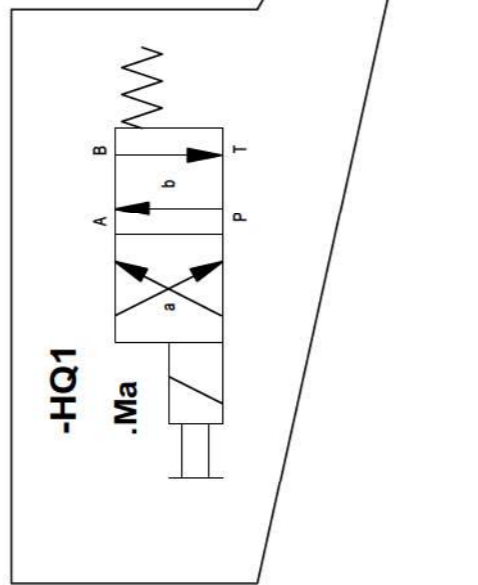
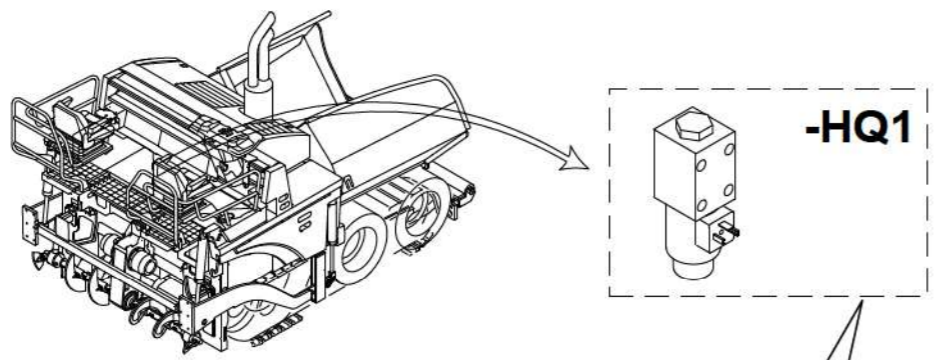
VÖGELE

Document No.: Partial Document No.: Version No.:	
Series code:	Valid for Serial No.:
0890	from 0455 to XXXX
Sheet plant:	
Sheet Location:	

**Rückläufe Saugleitungen
return flows suction lines**

Hydraulics
Schutzvermerk nach ISO 16016 beachten
Refer to protection notice ISO 16016
© 2016 by Joseph Vögele AG

Aufbau Betriebsmittelkennzeichen / device designation configuration



- Art / Zählnummer
type / number

. Spulenbezeichnung
coil designation

Drawing by:		Approved by:		last change:	
date	03.08.2016	date	13.04.2017	date	
name	Letz	name	Holzmann	name	
E - CAE		Document type:		Function group No.:	
		HFP			

SF	Status:	Material No.:
	AE =changable	2548152
	PF =prototype release	Revision No.:
	SF =serial release	00

VÖGELE	Document No.: Partial Document No.: Version No.:		
	Series code:	Valid for Serial No.:	
	0890	from 0455 to XXXX	
	Sheet plant: Sheet Location:		




Erklärung Aufbau Betriebsmittelkennzeichen
Explanation device designation layout

Hydraulics
Schutzvermerk nach ISO 16016 beachten
Refer to protection notice ISO 16016
© 2016 by Joseph Vögele AG

Gerätekenbuchstaben, hydraulisch (beispielhaft) / device code letter, hydraulic (exemplified)

<u>Gerätekenbuchstabe / device code letter</u>	<u>Deutsch</u>	<u>English</u>	<u>Gerätekenbuchstabe / device code letter</u>	<u>Deutsch</u>	<u>English</u>
- HA	Ventilblock	valve-block	- HP	Manometer	pressure gauge
- HB	Durchflussmesser Durchflusswächter Druckschalter hydraulisch	flow measuring device flow controller hydraulic pressure switch	- HQ	Bremsventil Kugelhahn Lenkeinheit Wegeventil	braking valve ball valve steering unit direction control valve
- HC	Speicher	accumulator	- HR	Drosselventil Drosselrückschlagventil Druckreduzierventil Lasthalteventil Rückschlagventil	throttle valve throttle check valve pressure reduction valve counter balance valve check valve
- HE	Kühler	cooler	- HT	Getriebe	gearbox
- HF	Druckbegrenzungsventil	pressure limiting valve	- HV	Hydraulikfilter	hydraulic filter
- HG	Hydraulikpumpe	hydraulic pump	- HX	Abdeckplatten Reihenflanschplatte Schnellkupplung	cover plates manifold plate quick-action coupling
- HK	Mengenteiler Prioritätsventil Stromregelventil	flow divider priority valve flow control valve	- Ma	Ventil Magnetspule a	valve coil a
- HM	Hydraulikmotor Hydraulikzylinder	hydraulic motor hydraulic cylinder	- Mb	Ventil Magnetspule b	valve coil b

Drawing by: date 03.08.2016 name Letz	Approved by: date 13.04.2017 name Holzmann	last change: date name	Status: AE = changable PF = prototype release SF = serial release SF	Material No.: 2548152 Revision No.: 00	VÖGELE	Document No.: Partial Document No.: Version No.: Series code: 0890 Valid for Serial No.: from 0455 to XXXX Sheet plant: Sheet Location:	Erklärung Gerätekenbuchstaben, hydraulisch Explanation device code letter, hydraulic	Sheet 19 of 22 Sheets
1	2	3	4	5	6	7	8	

Linienformate / line formats			Leitungsbezeichnungen / line designations		
<u>Linienart / line type</u>	<u>Linienstärke / Grafik / line thickness / graphic</u>	<u>Bedeutung / standing</u>	<u>Abkürzungen Leitungsbezeichnungen / line designation abbreviations</u>	<u>Deutsch</u>	<u>English</u>
Volllinie / solid line	 0,25mm	Standard, Druckleitung, Tankleitung / standard, pressure line, tank line	P	Druckleitung	pressure line
			T	Tankleitung, Rücklaufleitung	tank line, return line
Strichpunktlinie / dash-dotted line	 0,5mm	Bauteilumrandung / component border	S	Saugleitung	suction line
			L	Leckölleitung	leakage line
Strichlinie / dashed line	 0,25mm	Steuerleitung, Lecköl / control line, leakage oil	X	Steuerleitung	control line
			LS	Load Sensing Leitung	load sensing line

Drawing by:		Approved by:		last change:		Status:		Material No.:		Document No.: Partial Document No.: Version No.:		Erklärung Linienformate, Leitungsbezeichnungen explanation line formats, line designations	Sheet of 20 of 22 Sheets
date	03.08.2016	date	13.04.2017	date		SF	AE =changable	2548152	Series code: 0890 Valid for Serial No.: from 0455 to XXXX				
name	Letz	name	Holzmann	name			PF =prototype release	Revision No.: 00	Sheet plant:				
E - CAE		Document type: HFP		Function group No.:				Sheet Location:					

Hydraulics
Schutzvermerk nach ISO 16016 beachten
Refer to protection notice ISO 16016
© 2016 by Joseph Vögele AG

Betriebsmittelkennzeichen / Device designation	Blatt / Sheet	Betriebsmittelkennzeichen / Device designation	Blatt / Sheet	Betriebsmittelkennzeichen / Device designation	Blatt / Sheet
-HA1	/7.3	-HA4.HF3	/11.7	-HC1	/17.5
-HA1.HQ1	/7.3	-HA4.HQ1	/11.2	-HE1	/17.5
-HA1.HQ2	/7.3	-HA4.HQ2	/11.3	-HG1	/5.5
-HA1.HR1	/7.3	-HA4.HQ3	/11.3	-HG1.HQ1	/5.6
-HA2	/9.2	-HA4.HQ4	/11.4	-HG2	/6.5
-HA2.HF1	/9.2	-HA4.HQ5	/11.5	-HG2.HQ1	/6.6
-HA2.HQ1	/9.3	-HA4.HQ6	/11.6	-HG3	/8.2
-HA2.HQ2	/9.4	-HA4.HQ7	/11.7	-HG4	/8.6
-HA2.HQ3	/9.5	-HA4.HR1	/11.4	-HG5	/10.1
-HA2.HQ4	/9.6	-HA4.HR2	/11.3	-HG6	/8.7
-HA3	/10.2	-HA4.HR3	/11.6	-HG7	/8.7
-HA3.HF1	/10.2	-HA4.HR4	/11.7	-HG8	/7.6
-HA3.HF2	/10.3	-HA4.HR5	/11.6	-HM1	/5.3
-HA3.HK1	/10.2	-HA4.HR6	/11.7	-HM1.HB1	/5.1
-HA3.HQ1	/10.4	-HA5	/12.3	-HM2	/6.3
-HA3.HQ2	/10.5	-HA5.HQ1	/12.4	-HM2.HB1	/6.1
-HA3.HQ3	/10.3	-HA5.HR1	/12.4	-HM3	/9.3
-HA3.HR1	/10.4	-HA5.HR2	/12.5	-HM4	/9.4
-HA3.HR2	/10.4	-HA6	/13.5	-HM5	/9.5
-HA3.HR3	/10.5	-HA6.HF1	/13.4	-HM6	/8.5
-HA3.HR4	/10.5	-HA6.HQ1	/13.4	-HM6.HF1	/8.5
-HA3.HR5	/10.4	-HA7	/14.4	-HM7	/10.4
-HA3.HR6	/10.4	-HA7.HP1	/14.4	-HM8	/10.5
-HA3.HR7	/10.5	-HA7.HQ1	/14.3	-HM9	/11.3
-HA3.HR8	/10.5	-HA7.HR1	/14.4	-HM10	/11.3
-HA4	/11.1	-HA7.HR2	/14.4	-HM11	/11.4
-HA4.HF1	/11.2	-HA7.HR3	/14.4	-HM12	/11.5
-HA4.HF2	/11.6	-HA7.HX1	/14.4	-HM13	/11.5

Drawing by:		Approved by:		last change:		Status:		Material No.:		Document No.: Partial Document No.: Version No.:		Sheet		
date	03.08.2016	date	13.04.2017	date		SF	AE =changable	2548152				Betriebsmittelliste device list		
name	Letz	name	Holzmann	name			PF =prototype release	Revision No.:	00					
E - CAE		Document type:		Function group No.:			SF =serial release							21
		HFP										of		
												22		
												Sheets		

Betriebsmittelkennzeichen / Device designation	Blatt / Sheet	Betriebsmittelkennzeichen / Device designation	Blatt / Sheet	Betriebsmittelkennzeichen / Device designation	Blatt / Sheet
-HM14	/12.5				
-HR1	/11.4				
-HR2	/11.5				
-HR3	/11.5				
-HR4	/12.4				
-HR5	/12.5				
-HR6	/12.5				
-HR7	/12.5				
-HR8	/17.4				
-HT1	/4.2				
-HV1	/15.4				
-HV2	/16.2				
-HV2.HB1	/16.2				
-HV3	/17.3				
-HV4	/17.5				
-HV4.HB1	/17.5				
-HX1	/16.4				
-HX2	/17.3				

Drawing by:		Approved by:		last change:		Status:		Material No.:		Document No.: Partial Document No.: Version No.:		Sheet	
date	03.08.2016	date	13.04.2017	date		SF	AE =changable	2548152				22	
name	Letz	name	Holzmann	name			PF =prototype release	Revision No.:		Series code: Valid for Serial No.:		of	
E - CAE		Document type:		Function group No.:			SF =serial release	00		0890 from 0455 to XXXX		22	
HFP										Sheet plant:		22	
										Sheet Location:		Sheets	

Betriebsmittelliste
device list