

Hydraulikplan Hydraulic diagram

WR 200 / WR200 XL

06WR
Baureihe /
Series

06WR _____
Seriennummer /
Serial No

Ausgabedatum /
Date of issue

2283383_09
Katalog Bestellnummer /
Catalogue order No

Schutzvermerk nach ISO 16016

Weitergabe sowie Vervielfältigung dieses Dokuments, Verwertung und Mitteilung seines Inhalts sind verboten, soweit nicht ausdrücklich gestattet. Zuwiderhandlungen verpflichten zum Schadenersatz. Alle Rechte für den Fall der Patent-, Gebrauchsmuster- oder Geschmacksmustereintragung vorbehalten.

Protection Notice ISO 16016

The reproduction, distribution and utilization of this document as well as the communication of its contents to others without explicit authorization is prohibited. Offenders will be held liable for the payment of damages. All rights reserved in the event of the grant of a patent, utility model or design.

Blatt / Sheet	Inhalt / Contents	Blatt / Sheet	Inhalt / Contents
1	Deckblatt cover sheet	16	Einsprühleiste Wasser-Emulsion 2 spraying beam water-emulsion 2
2	Inhaltsverzeichnis contents	17	Schaumbitumen reinigen foamed bitumen cleaning
3	Pumpenanordnung pump position	18	Vario Einsprühleiste 1, FB 2000 vario spraying beam 1, FB 2000
4	Fahrtrieb advance drive	19	Vario Einsprühleiste 2, FB 2000 vario spraying beam 2, FB 2000
5	Sprühen 1 / 1800 ltr./min spray 1 / 1800 ltr./min	20	Vario Einsprühleiste 1, FB 2400 vario spraying beam 1, FB 2400
6	Sprühen 2 spray 2	21	Vario Einsprühleiste 2, FB 2400 vario spraying beam 2, FB 2400
7	Generatorantrieb generator-drive	22	Lüfterantrieb fan drive
8	Bitumen bitumen	23	Rückläufe return flows
9	Zylinder Funktion cylinder function	24...25	Druckluftanlage compressed air system
10	Höhenverstellung height adjustment	26	Prozeßwasser process water
11...12	Zylinder Funktion cylinder function	27	Erklärung Aufbau Betriebsmittelkennzeichen Explanation device designation layout
13	Optionen options	28	Erklärung Gerätebuchstaben, hydraulisch Explanation device code letter, hydraulic
14	Versorgung Sprühleiste supply spraying beam	29	Erklärung Linienformate, Leitungsbezeichnungen Explanation line formats, line designations
15	Einsprühleiste Wasser-Emulsion 1 spraying beam water-emulsion 1	30...34	Betriebsmittelliste Device list

Drawing by:	Approved by:	last change:
date 12.01.2014	date 29.05.2019	date
name V. Kröll	name B. Saal	name
E - CAE	Document type:	Function group No.:
	HFP	

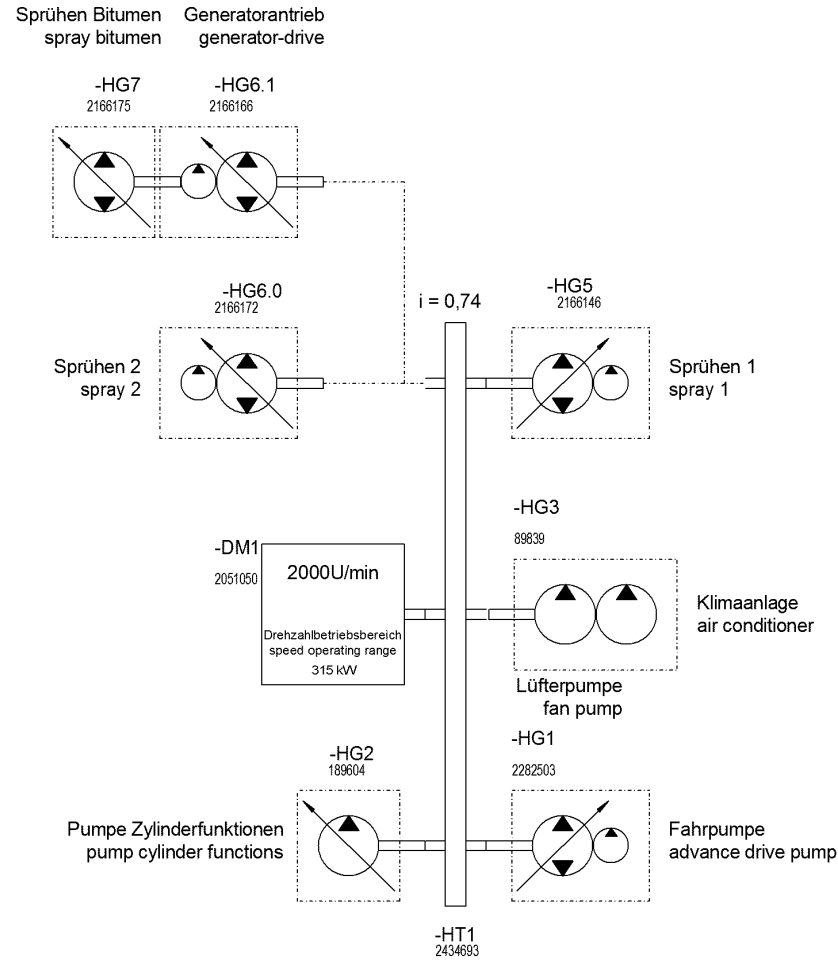
Status:	Document No.:
SF	
AE = changable	Partial Document No.:
PF = prototype release	Version No.:
SF = serial release	



Material No.:	Revision No.:
2283383	09
Series code:	Valid for Serial No.:
06WR	from 0001 to 0092
Sheet plant:	
Sheet Location:	

Inhaltsverzeichnis
contents

Sheet
2
of
34
Sheets



03
Revision

09
Revision

Drawing by:	Approved by:	last change:
date 12.01.2014	date 29.05.2019	date 09.04.2019
name V. Kröll	name B. Saal	name V. Kröll
E - CAE	Document type:	Function group No.:
	HFP	

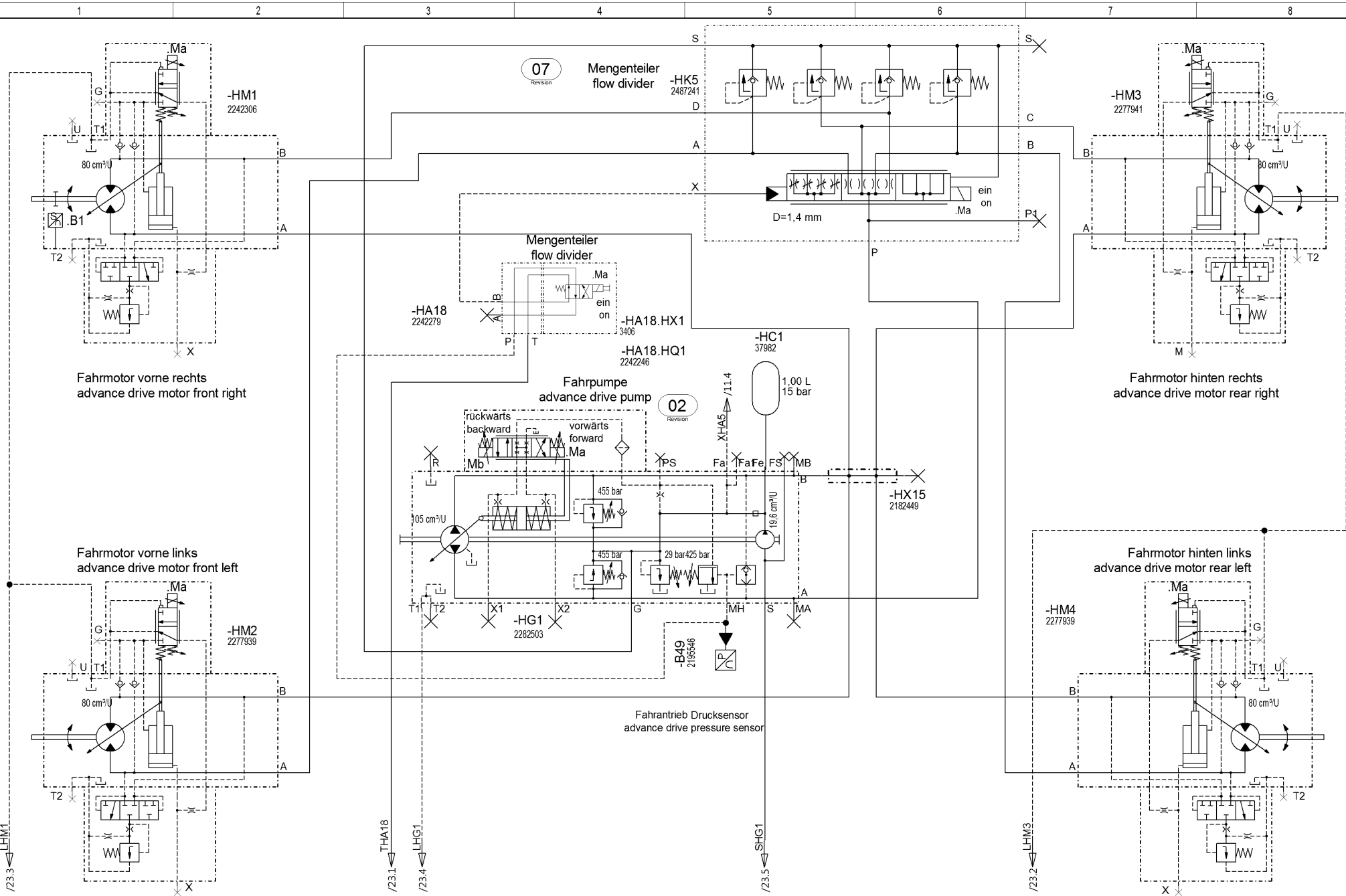
Status:	Document No.:
SF	
AE = changable	Partial Document No.:
PF = prototype release	
SF = serial release	Version No.:



Material No.:	Revision No.:
2283383	09
Series code:	Valid for Serial No.:
06WR	from 0001 to 0092
Sheet plant:	
Sheet Location:	

Pumpenanordnung
 pump position

Sheet
3
of
34 Sheets

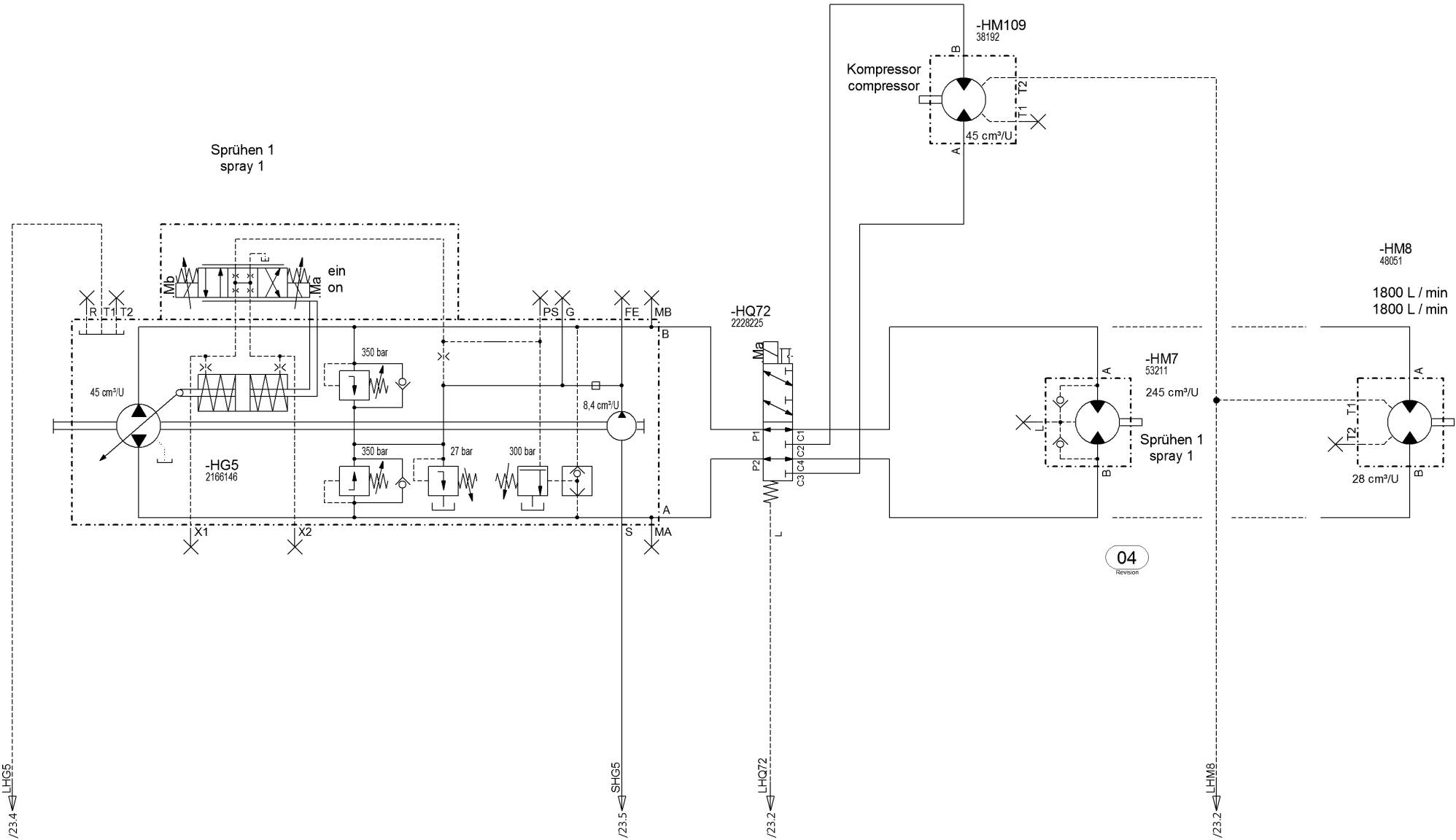


Drawing by: date 12.01.2014 name V. Kröll E - CAE	Approved by: date 29.05.2019 name B. Saal Document type: HFP	last change: date name Function group No.:
---	--	--

Status: AE = changable PF = prototype release SF = serial release SF	Document No.: Partial Document No.: Version No.:
--	--

W WIRTGEN	Material No.: 2283383 Series code: 06WR Sheet plant: Sheet Location:	Revision No.: 09 Valid for Serial No.: from 0001 to 0092
------------------	---	--

Fahrtrieb advance drive



Drawing by:	Approved by:	last change:
date 12.01.2014	date 29.05.2019	date
name V. Kröll	name B. Saal	name
E - CAE	Document type:	Function group No.:
	HFP	

Status:
SF
AE = changable
PF = prototype release
SF = serial release

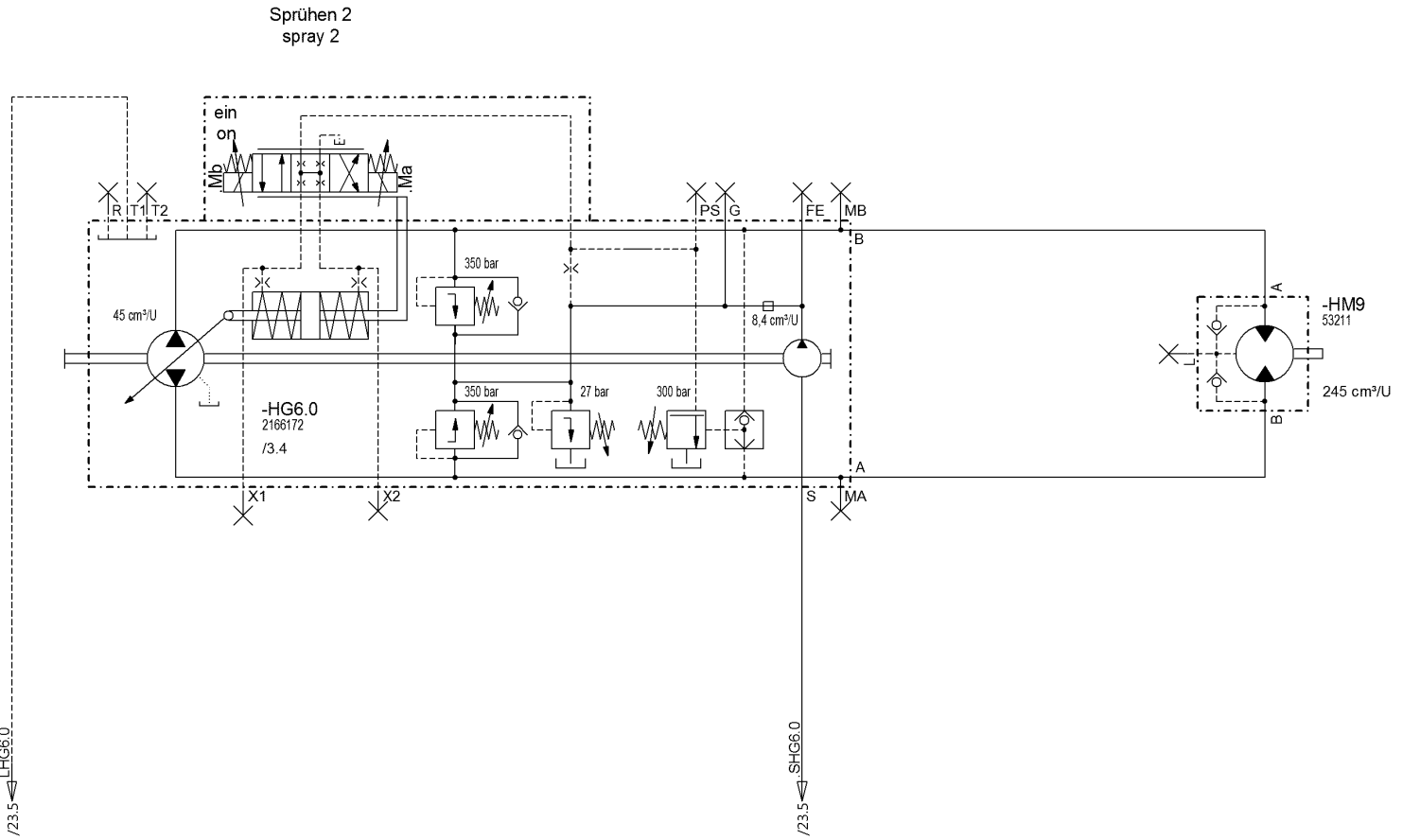
Document No.:
Partial Document No.:
Version No.:



Material No.:	Revision No.:
2283383	09
Series code:	Valid for Serial No.:
06WR	from 0001 to 0092
Sheet plant:	
Sheet Location:	

Sprühen 1 / 1800 ltr./min
 spray 1 / 1800 ltr./min

Sheet
5
of
34
Sheets



Drawing by:	Approved by:	last change:
date 12.01.2014	date 29.05.2019	date
name V. Kröll	name B. Saal	name
E - CAE	Document type:	Function group No.:
	HFP	

Status:	AE = changable
SF	PF = prototype release
	SF = serial release

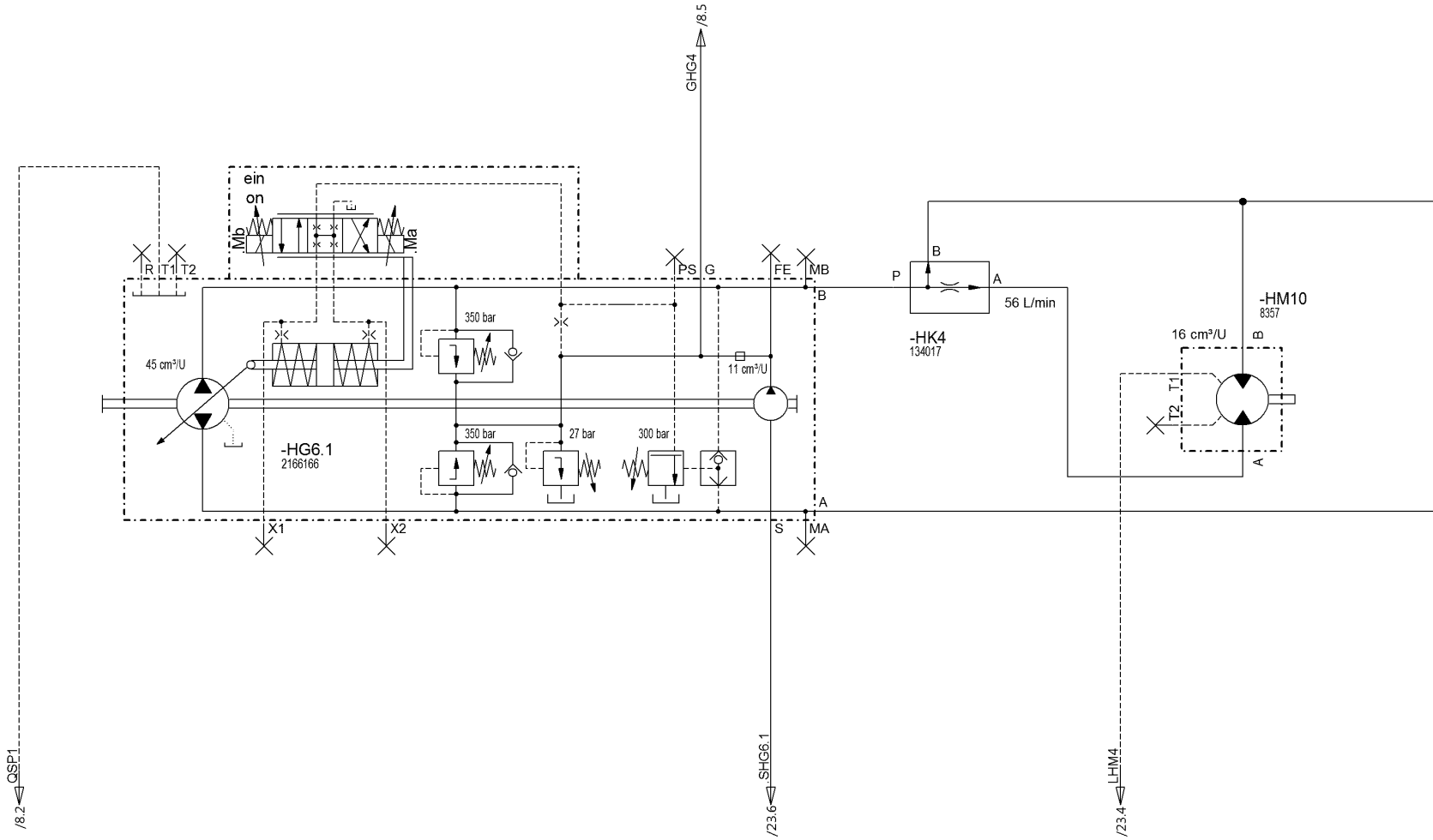
Document No.:	
Partial Document No.:	
Version No.:	



Material No.:	Revision No.:
2283383	09
Series code:	Valid for Serial No.:
06WR	from 0001 to 0092
Sheet plant:	
Sheet Location:	

Sprühen 2	
spray 2	

Sheet
6
of
34
Sheets



Drawing by:	Approved by:	last change:
date 12.01.2014	date 29.05.2019	date
name V. Kröll	name B. Saal	name
E - CAE	Document type:	Function group No.:
	HFP	

Status:
SF
AE = changable PF = prototype release SF = serial release

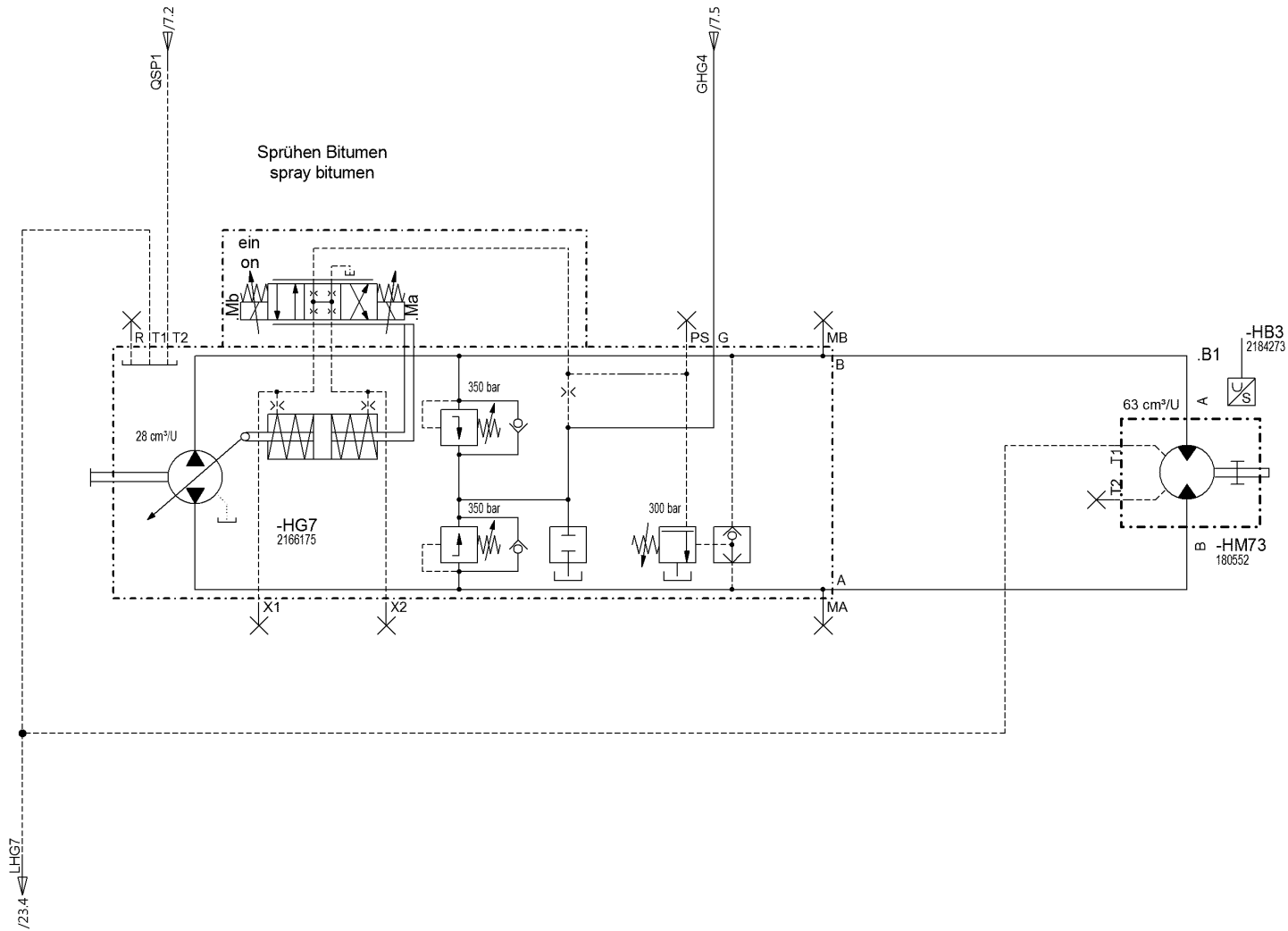
Document No.:
Partial Document No.:
Version No.:



Material No.:	Revision No.:
2283383	09
Series code:	Valid for Serial No.:
06WR	from 0001 to 0092
Sheet plant:	
Sheet Location:	

Generatorantrieb
generator-drive

Sheet
7
of
34
Sheets



Drawing by:	Approved by:	last change:
date 12.01.2014	date 29.05.2019	date
name V. Kröll	name B. Saal	name
E - CAE	Document type:	Function group No.:
	HFP	

Status:
 AE = changable
 PF = prototype release
 SF = serial release

Document No.:
 Partial Document No.:
 Version No.:

W WIRTGEN

Material No.:
2283383

Revision No.:
09

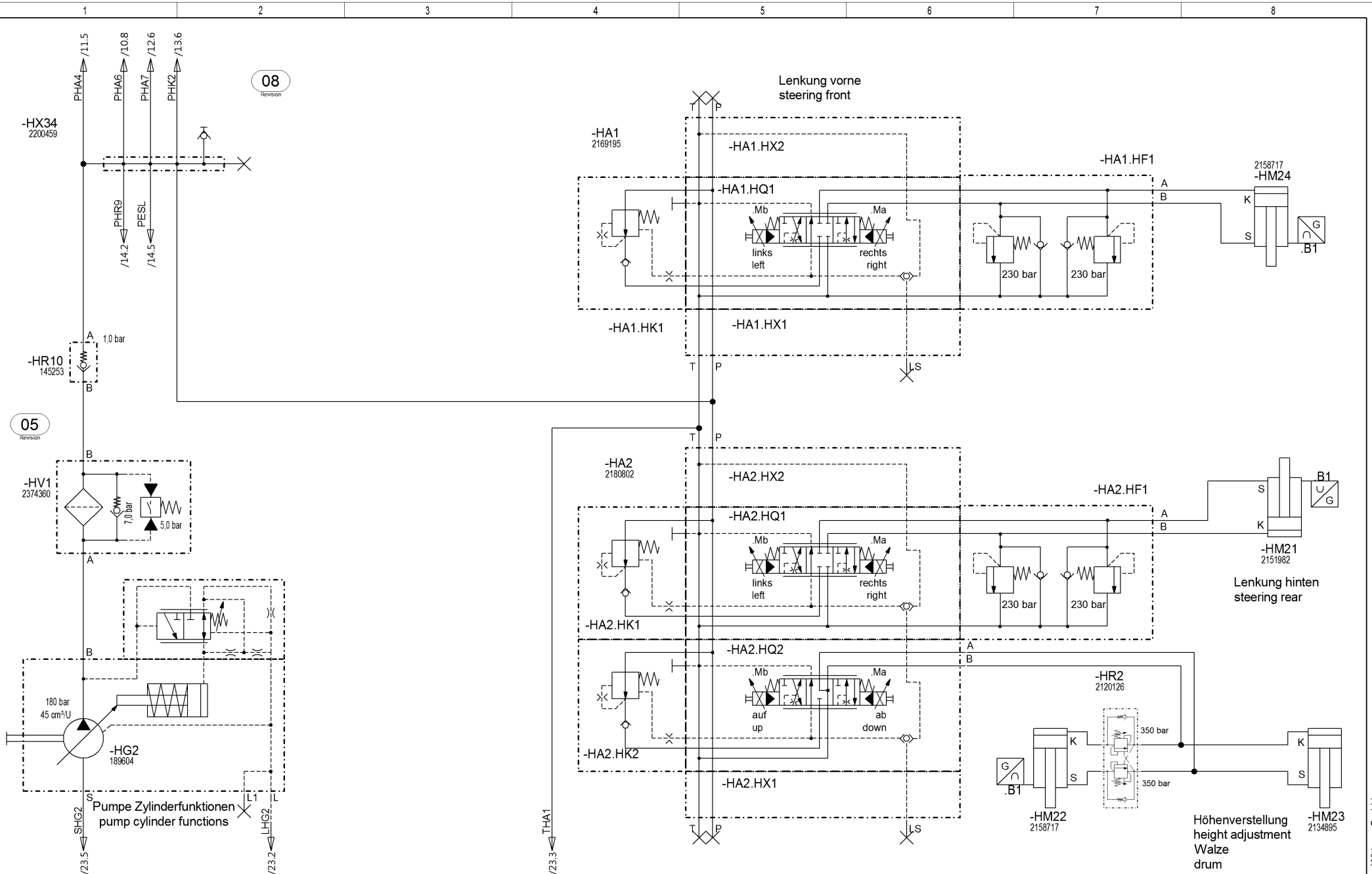
Series code:
06WR

Valid for Serial No.:
 from **0001** to **0092**

Sheet plant:
 Sheet Location:

**Bitumen
bitumen**

Sheet
8
 of
34 Sheets



08
Revision

05
Revision

Drawing by: date 12.01.2014 name V. Kröll E - CAE	Approved by: date 29.05.2019 name B. Saal	last change: date name
Document type: HFP		Function group No.:

Status:
SF
AE = changable
PF = prototype release
SF = serial release

Document No.:
Partial Document No.:
Version No.:

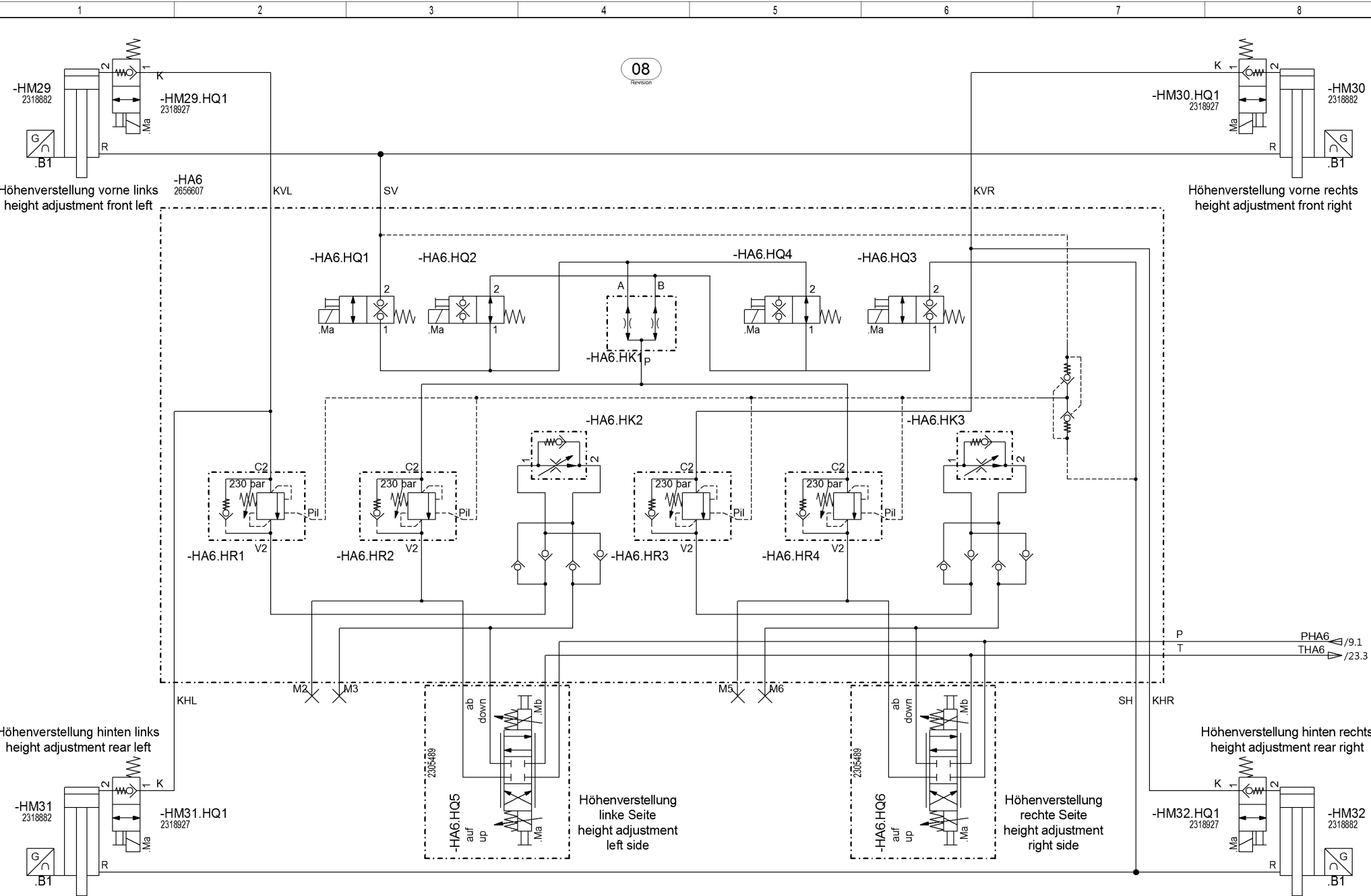


Material No.:
2283383
Series code: 06WR
Valid for Serial No.: from 0001 to 0092
Sheet plant:
Sheet Location:

Revision No.:
09

Zylinder Funktion
cylinder function

Sheet
9
of
34
Sheets



08
Revision

Drawing by:	Approved by:	last change:
date 12.01.2014	date 29.05.2019	date
name V. Kröll	name B. Saal	name
E - CAE	Document type:	Function group No.:
	HFP	

Status:
 AE = changable
 PF = prototype release
 SF = serial release

Document No.:
 Partial Document No.:
 Version No.:



Material No.:
2283383

Revision No.:
09

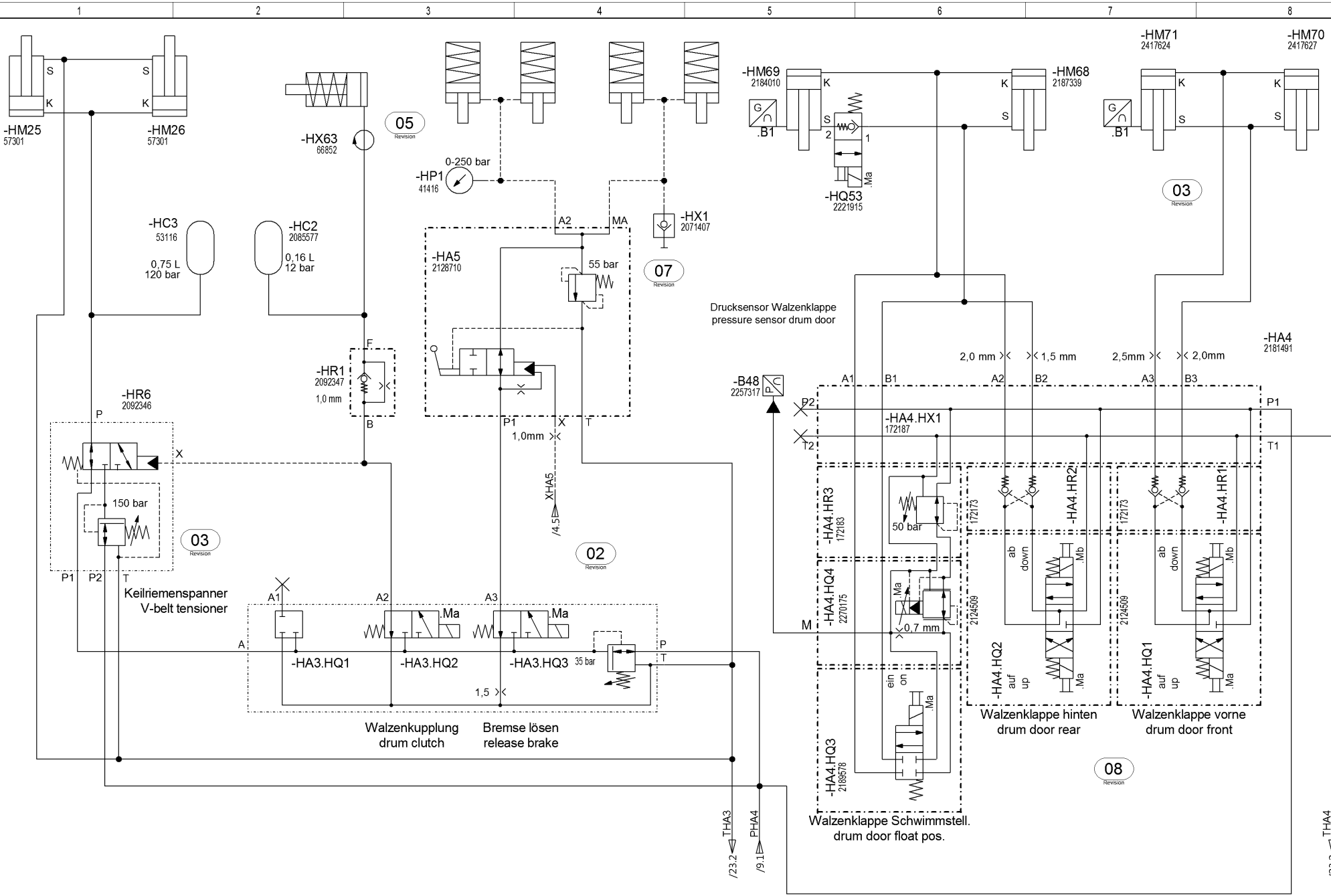
Series code:
06WR

Valid for Serial No.:
 from **0001** to **0092**

Sheet plant:
 Sheet Location:

Höhenverstellung
 height adjustment

Sheet
10
 of
34 Sheets



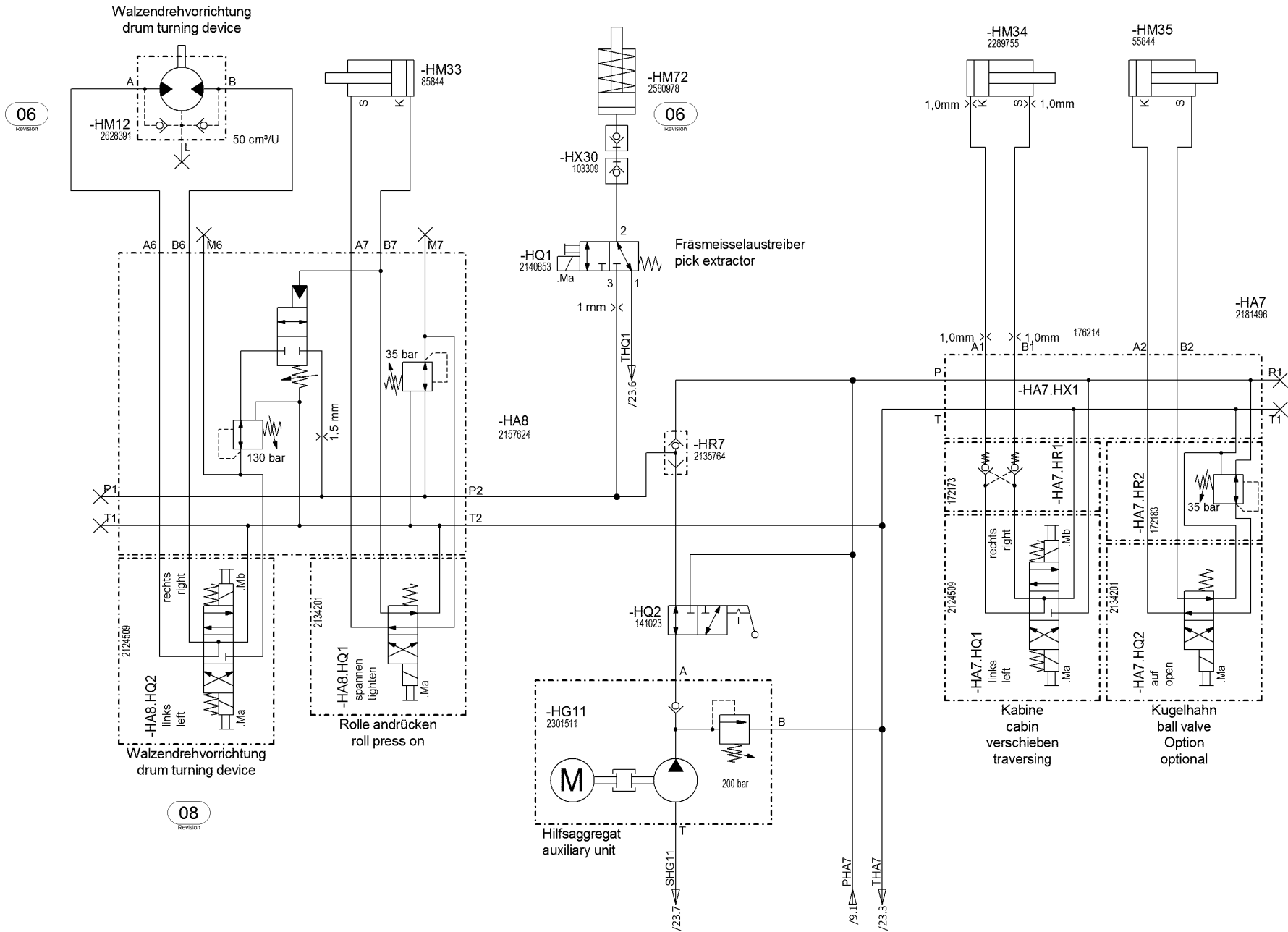
Drawing by: date 12.01.2014 name V. Kröll E - CAE	Approved by: date 29.05.2019 name B. Saal Document type: HFP	last change: date name Function group No.:
---	--	--

Status: SF AE = changable PF = prototype release SF = serial release	Document No.: Partial Document No.: Version No.:
--	--



Material No.: 2283383	Revision No.: 09
Series code: 06WR	Valid for Serial No. from 0001 to 0092
Sheet plant: Sheet Location:	

Zylinder Funktion
cylinder function



Drawing by:	Approved by:	last change:	Status:
date 12.01.2014	date 29.05.2019	date	AE = changable
name V. Kröll	name B. Saal	name	PF = prototype release
E - CAE	Document type:	Function group No.:	SF = serial release
	HFP		

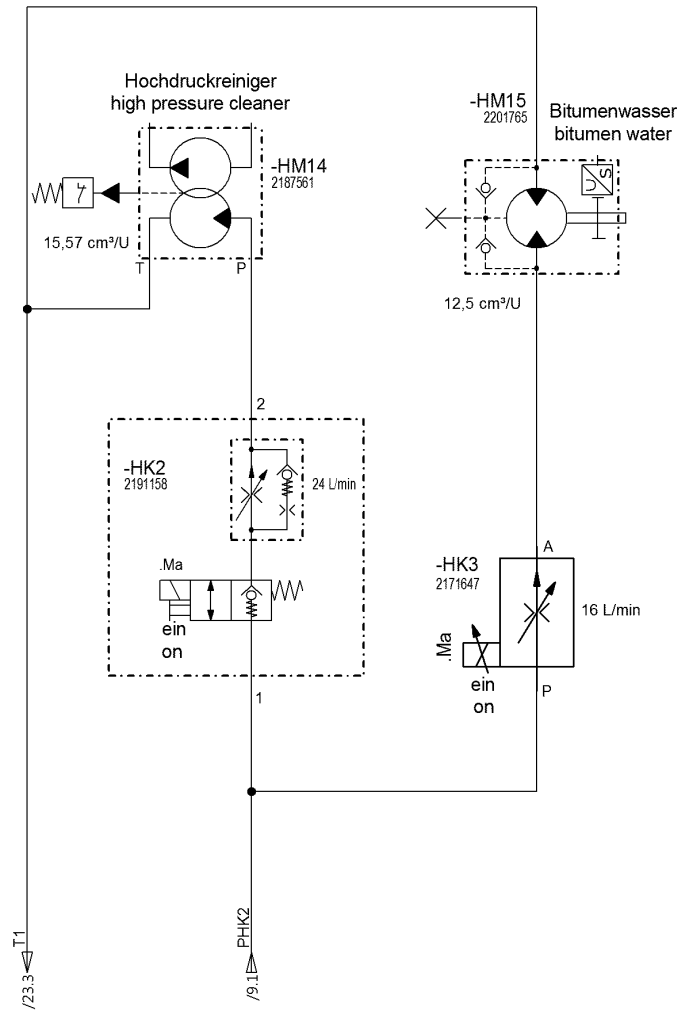
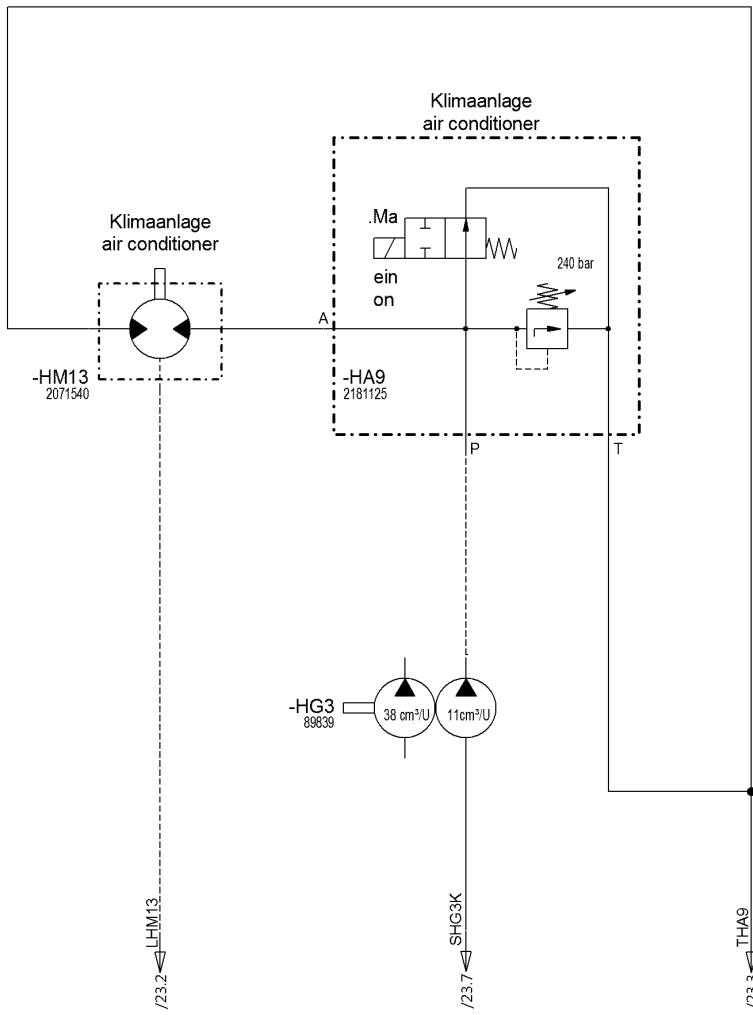
SF	Document No.:
	Partial Document No.:
	Version No.:



Material No.:	Revision No.:
2283383	09
Series code:	Valid for Serial No.:
06WR	from 0001 to 0092
Sheet plant:	
Sheet Location:	

Zylinder Funktion
cylinder function

Sheet
of
12
34 Sheets



Drawing by:	Approved by:	last change:
date 12.01.2014	date 29.05.2019	date
name V. Kröll	name B. Saal	name
E - CAE	Document type:	Function group No.:
	HFP	

Status:
 AE = changable
 PF = prototype release
 SF = serial release

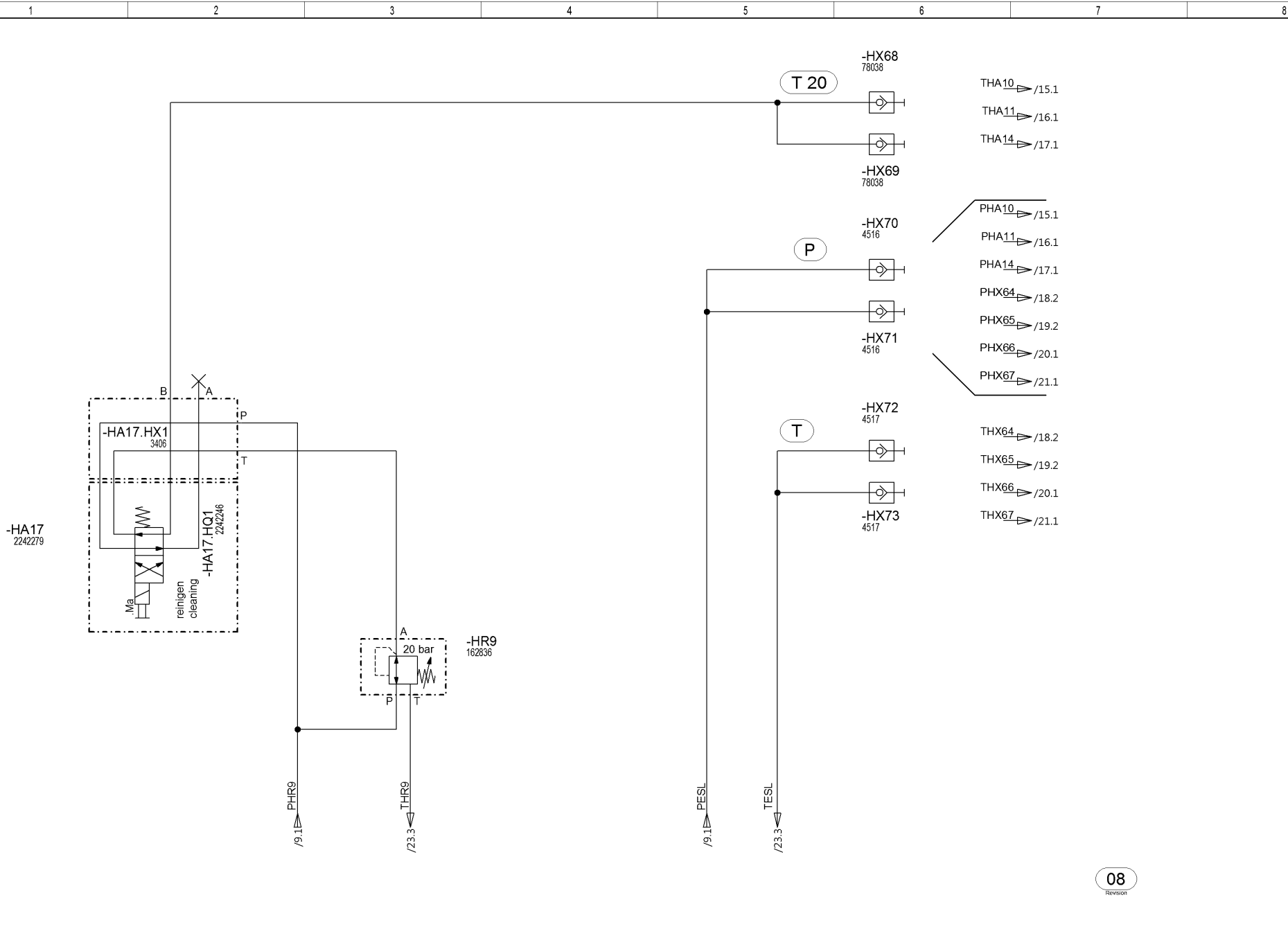
Document No.:
 Partial Document No.:
 Version No.:



Material No.: **2283383** Revision No.: **09**
 Series code: **06WR** Valid for Serial No.:
 from **0001** to **0092**
 Sheet plant:
 Sheet Location:

Optionen
options

Sheet
13
of
34 Sheets



08
Revision

Drawing by:	Approved by:	last change:
date 12.01.2014	date 29.05.2019	date
name V. Kröll	name B. Saal	name
E - CAE	Document type:	Function group No.:
	HFP	

Status:
SF AE = changable
 PF = prototype release
 SF = serial release

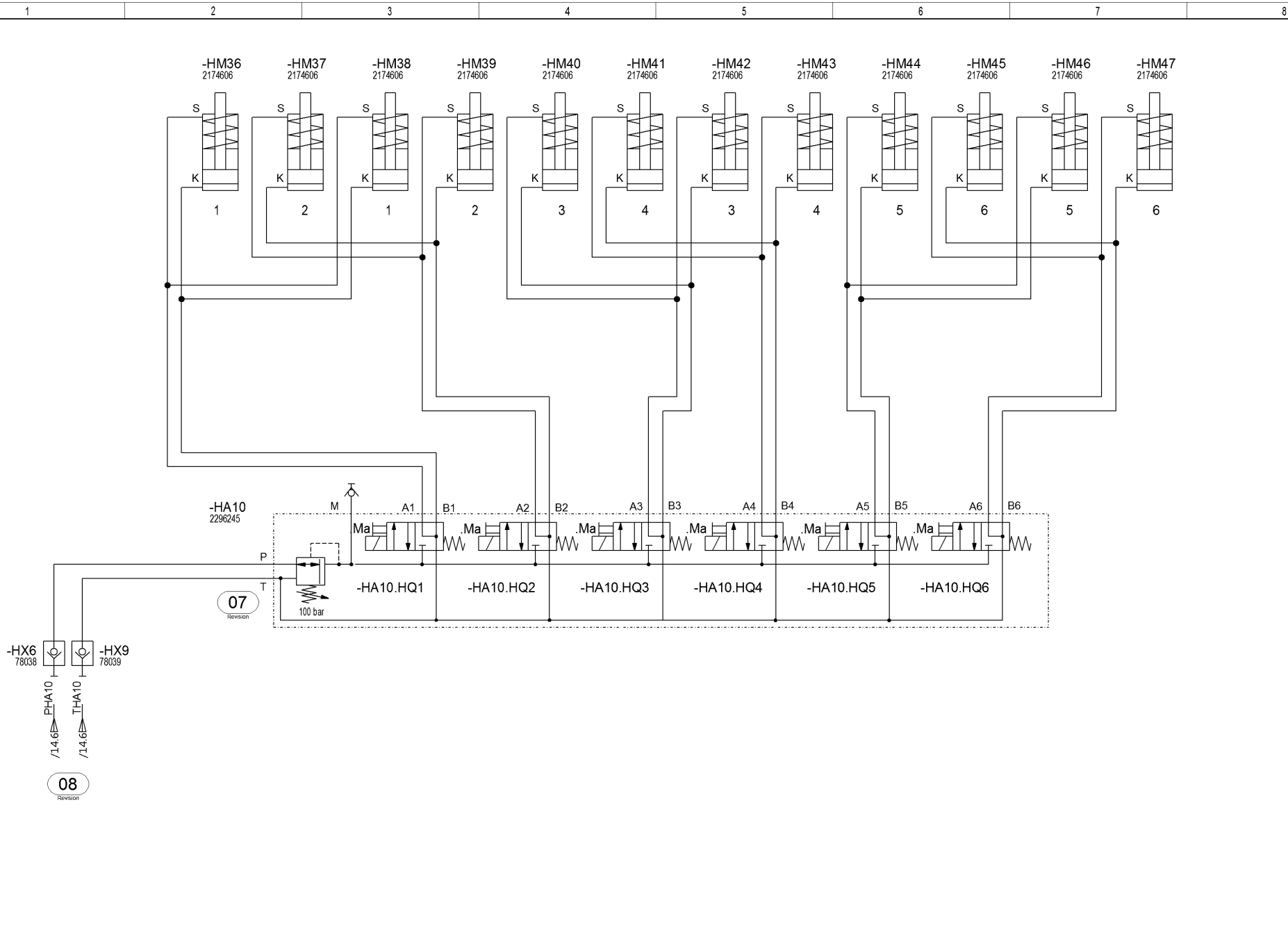
Document No.:
 Partial Document No.:
 Version No.:

W WIRTGEN

Material No.: **2283383** Revision No.: **09**
 Series code: **06WR** Valid for Serial No.:
 Sheet plant: from **0001** to **0092**
 Sheet Location:

**Versorgung Sprühleiste
 supply spraying beam**

Sheet
14
 of
34 Sheets



Drawing by: date 12.01.2014 name V. Kröll E - CAE	Approved by: date 29.05.2019 name B. Saal Document type: HFP	last change: date name Function group No.:
---	--	--

Status:
AE = changable
PF = prototype release
SF = serial release

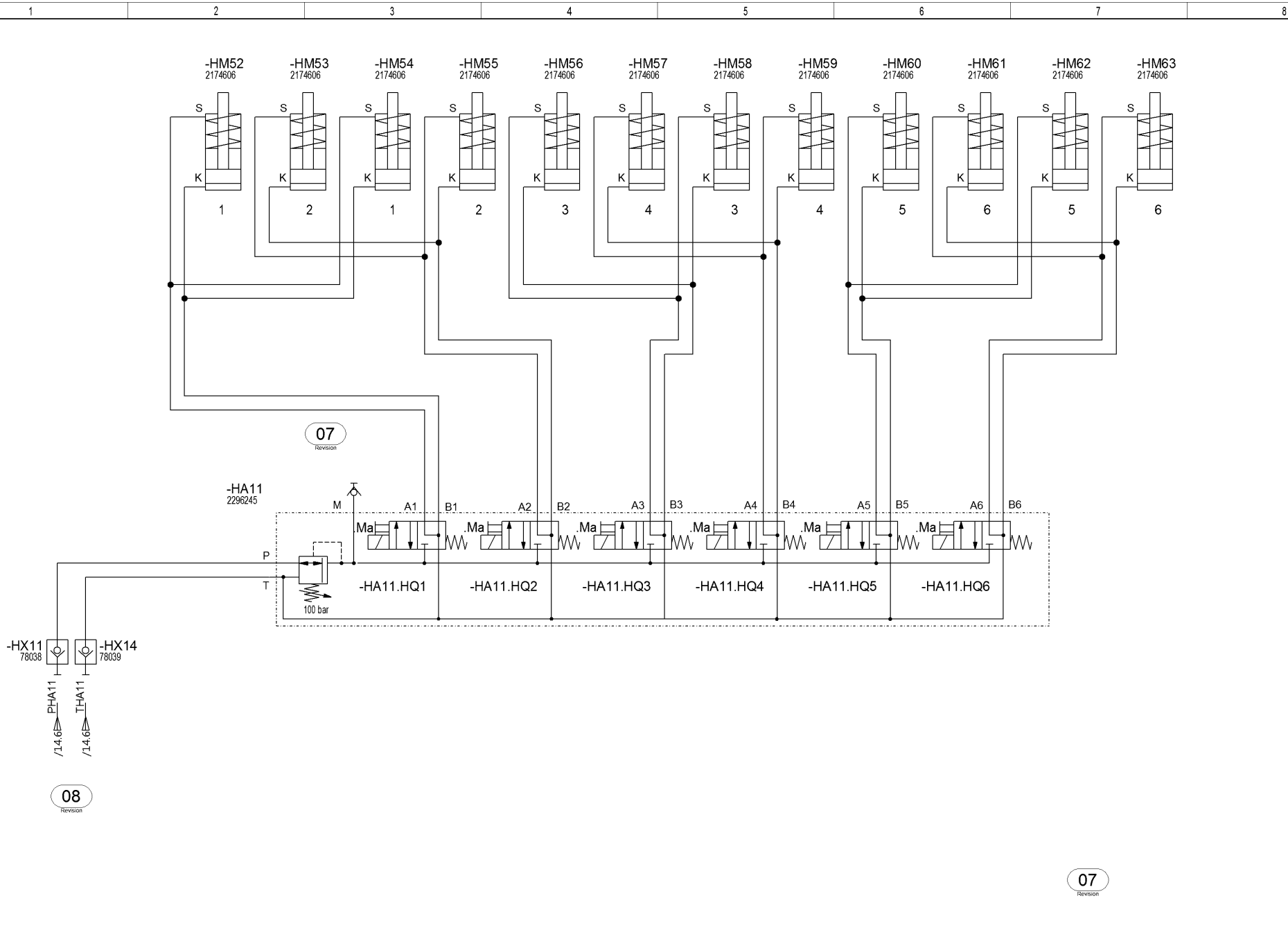
Document No.:
Partial Document No.:
Version No.:



Material No.: **2283383**
Revision No.: **09**
Series code: **06WR**
Valid for Serial No.:
from **0001** to **0092**
Sheet plant:
Sheet Location:

Einsprühleiste Wasser-Emulsion 1
spraying beam water-emulsion 1

Sheet
15
of
34 Sheets



Drawing by: date 12.01.2014 name V. Kröll E - CAE	Approved by: date 29.05.2019 name B. Saal Document type: HFP	last change: date name Function group No.:
---	--	--

Status:
 AE = changable
 PF = prototype release
 SF = serial release

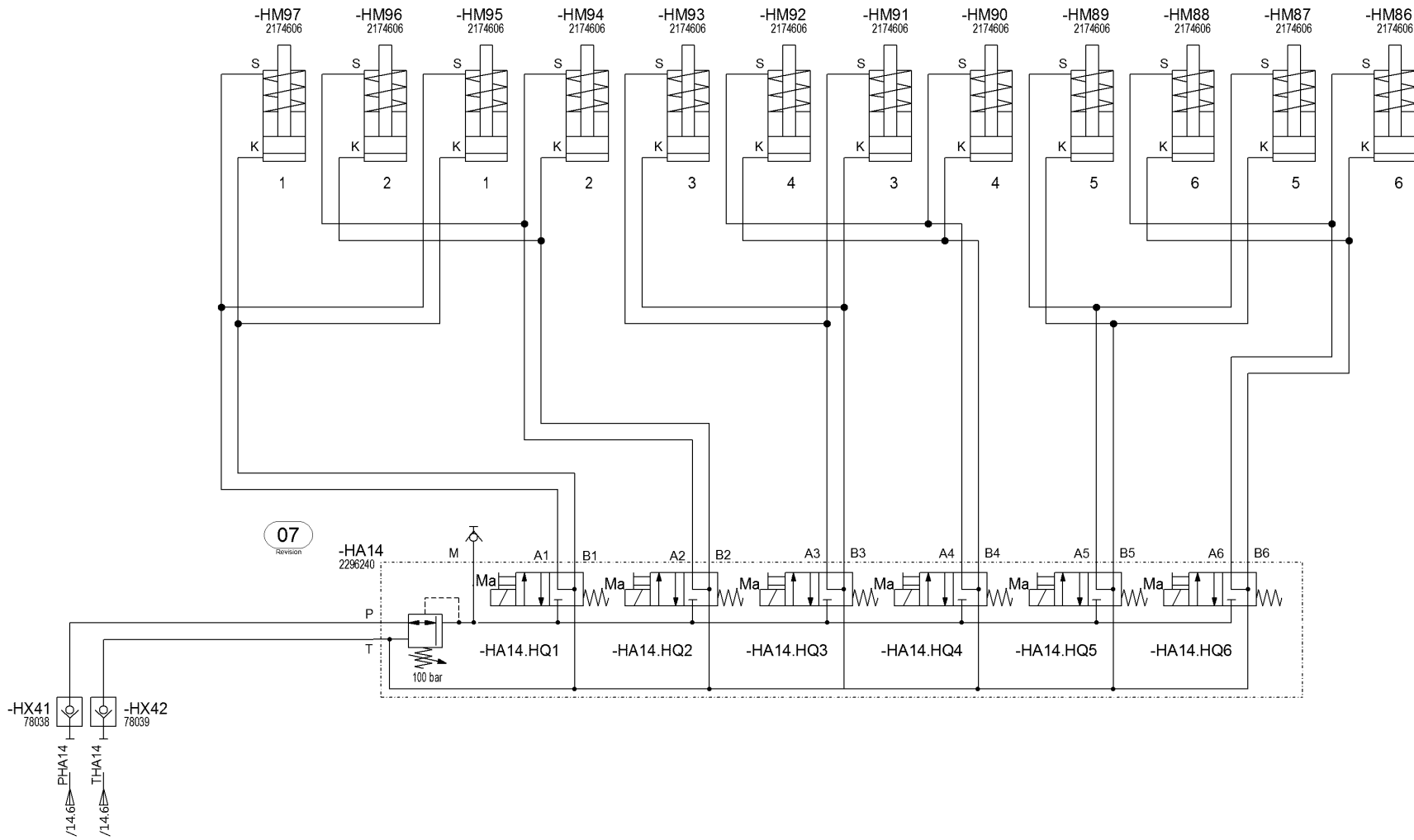
Document No.:
 Partial Document No.:
 Version No.:



Material No.: **2283383**
 Revision No.: **09**
 Series code: **06WR**
 Valid for Serial No.:
 from **0001** to **0092**
 Sheet plant:
 Sheet Location:

**Einsprühleiste Wasser-Emulsion 2
 spraying beam water-emulsion 2**

Sheet
16
 of
34 Sheets



07
Revision

08
Revision

07
Revision

Drawing by: date 12.01.2014 name V. Kröll E - CAE	Approved by: date 29.05.2019 name B. Saal Document type: HFP	last change: date name Function group No.:
---	--	--

Status:
SF AE = changable
PF = prototype release
SF = serial release

Document No.:
Partial Document No.:
Version No.:

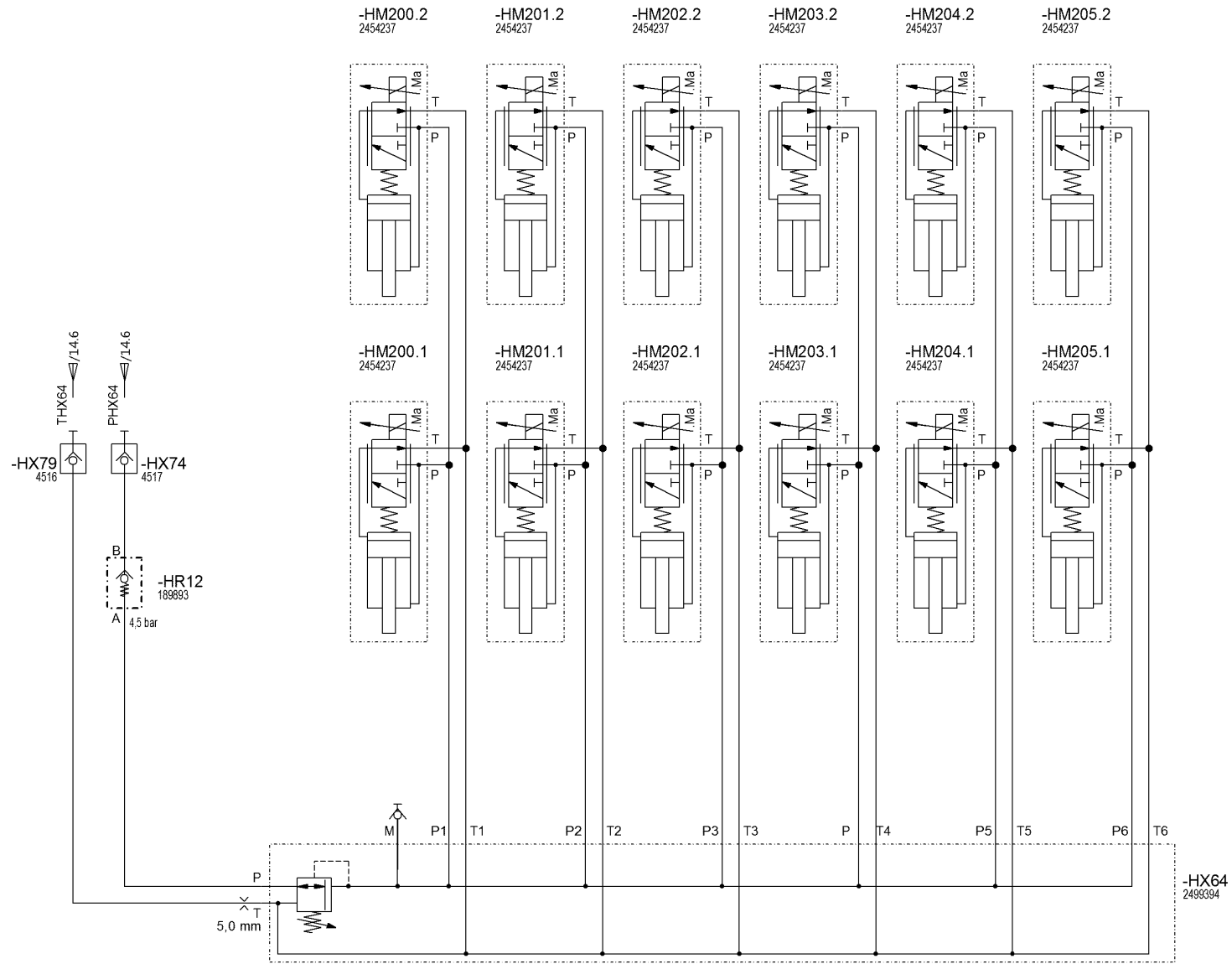


Material No.: 2283383	Revision No.: 09
Series code: 06WR	Valid for Serial No.: from 0001 to 0092
Sheet plant: Sheet Location:	

Schaumbitumen reinigen
foamed bitumen cleaning

Sheet
17
of
34
Sheets

1 2 3 4 5 6 7 8



08
Revision

Drawing by:	Approved by:	last change:
date 12.01.2014	date 29.05.2019	date
name V. Kröll	name B. Saal	name
E - CAE	Document type:	Function group No.:
	HFP	

Status:	Document No.:
SF	
AE = changable	Partial Document No.:
PF = prototype release	
SF = serial release	Version No.:

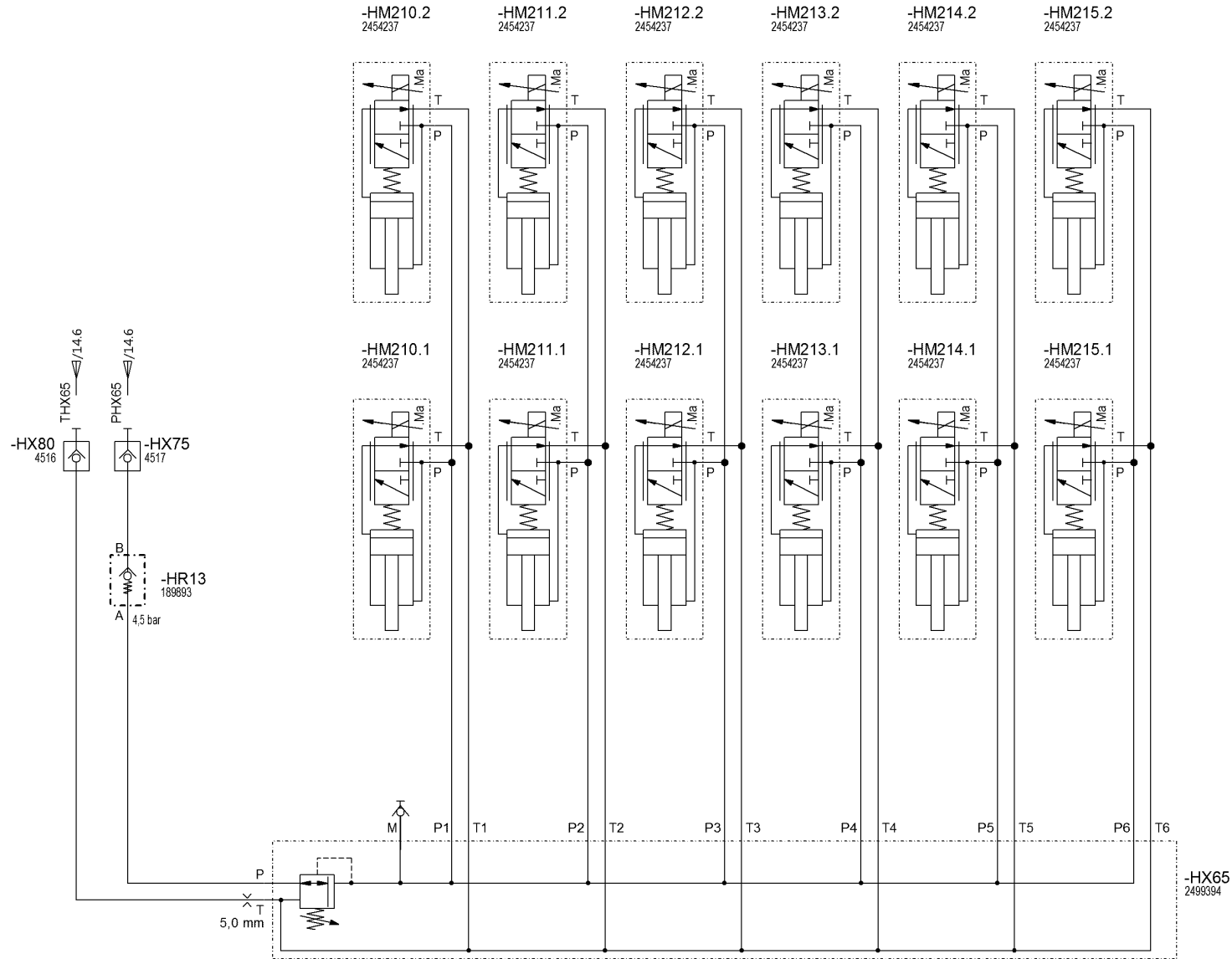


Material No.:	Revision No.:
2283383	09
Series code:	Valid for Serial No.:
06WR	from 0001 to 0092
Sheet plant:	
Sheet Location:	

Vario Einsprühleiste 1, FB 2000
vario spraying beam 1, FB 2000

Sheet
of
18
of
34 Sheets

1 2 3 4 5 6 7 8



08
Revision

Drawing by:	Approved by:	last change:
date 12.01.2014	date 29.05.2019	date
name V. Kröll	name B. Saal	name
E - CAE	Document type:	Function group No.:
	HFP	

Status:
 AE = changable
 PF = prototype release
 SF = serial release

Document No.:
 Partial Document No.:
 Version No.:

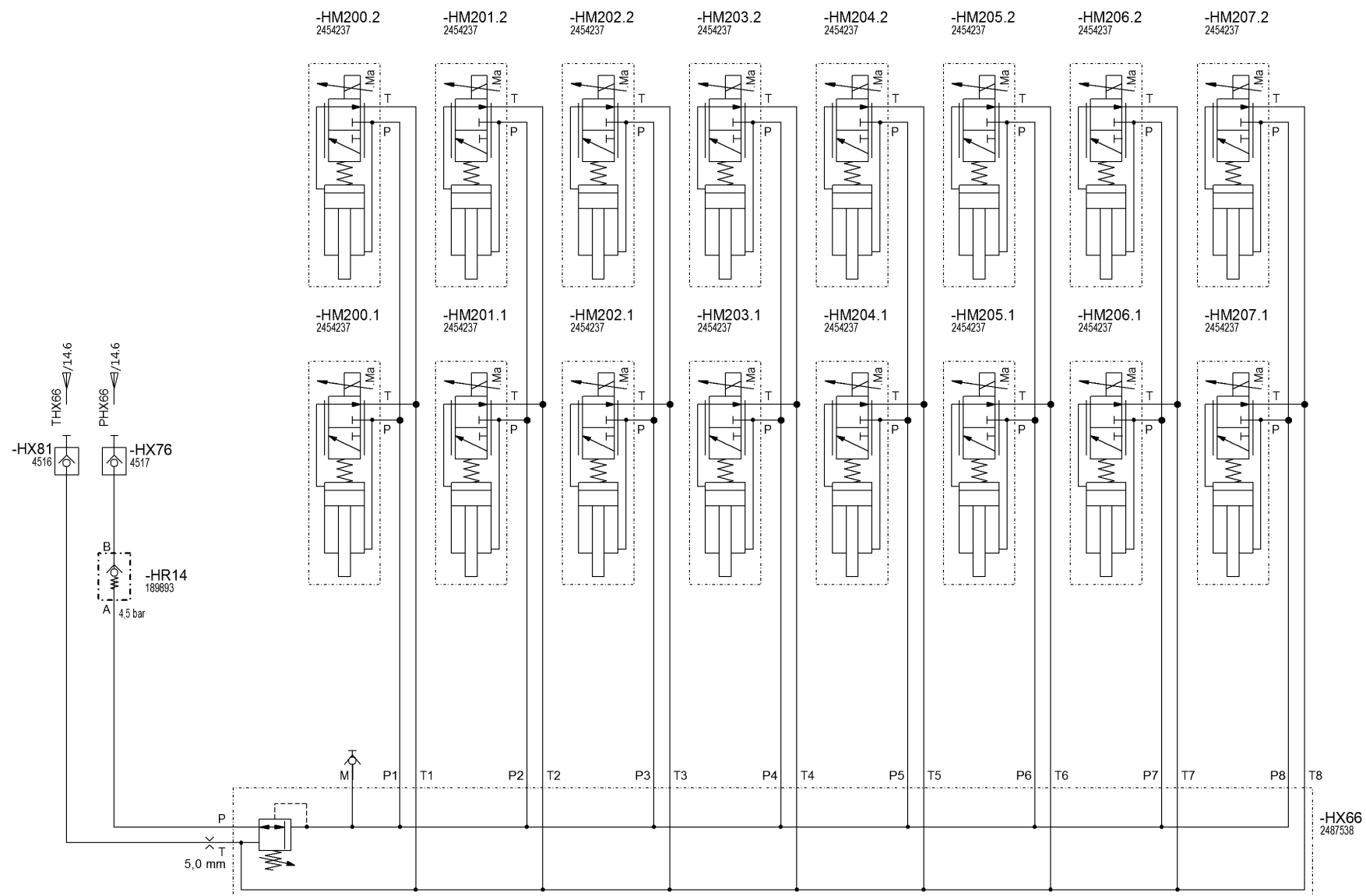


Material No.:
 2283383
Revision No.:
 09
Series code:
 06WR
Valid for Serial No.:
 from 0001 to 0092
Sheet plant:
Sheet Location:

Vario Einsprühleiste 2, FB 2000
vario spraying beam 2, FB 2000

Sheet
19
 of
34 Sheets

1 2 3 4 5 6 7 8



08
Revision

Drawing by:	Approved by:	last change:
date 12.01.2014	date 29.05.2019	date
name V. Kröll	name B. Saal	name
E - CAE	Document type:	Function group No.:
	HFP	

Status:
SF AE = changable
 PF = prototype release
 SF = serial release

Document No.:
 Partial Document No.:
 Version No.:

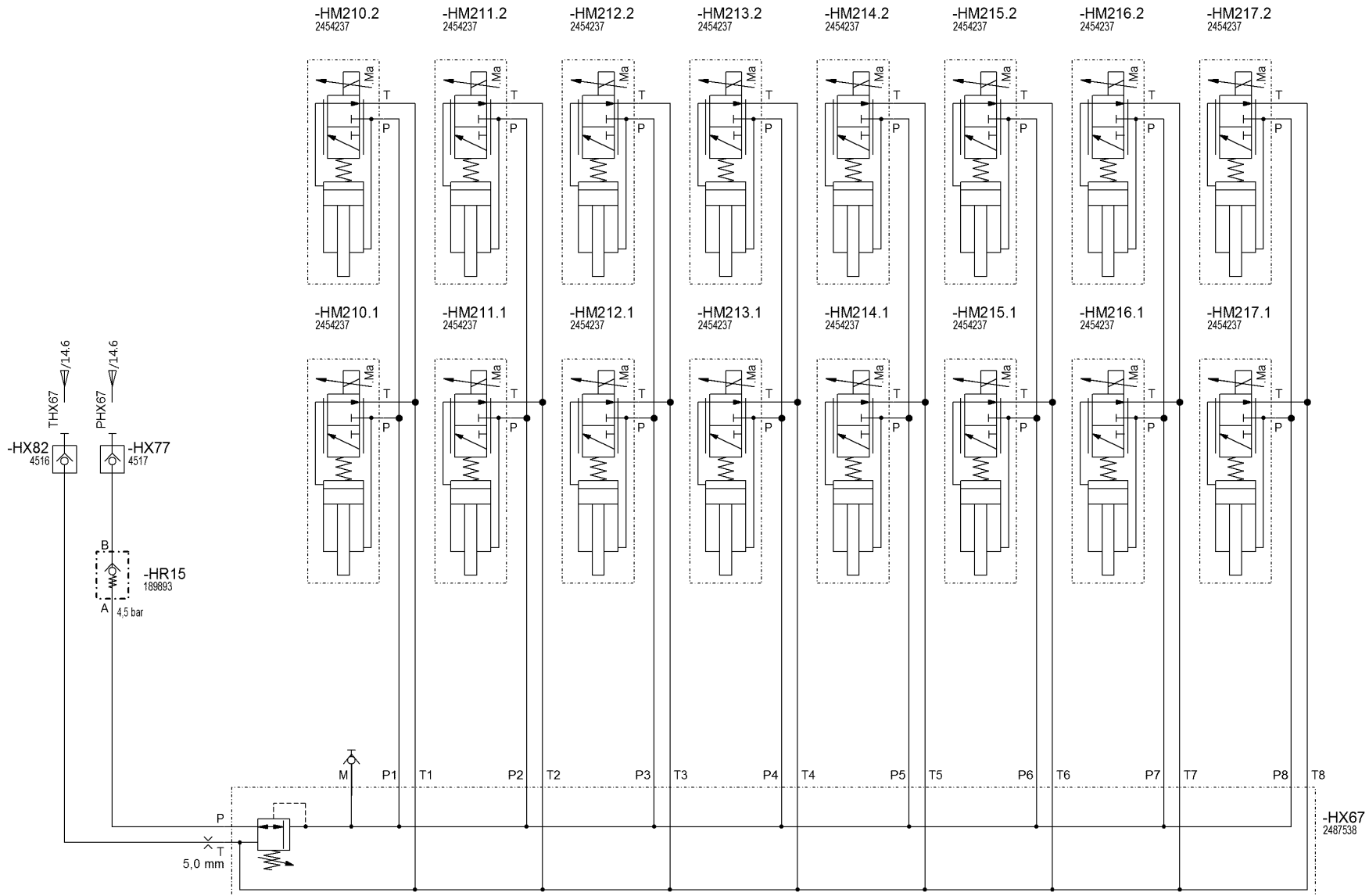


Material No.:
2283383
Revision No.:
09
 Series code: **06WR** Valid for Serial No.:
 from **0001** to **0092**
 Sheet plant:
 Sheet Location:

Vario Einsprühleiste 1, FB 2400
vario spraying beam 1, FB 2400

Sheet
20
 of
34 Sheets

1 2 3 4 5 6 7 8



08
Revision

Drawing by:	Approved by:	last change:
date 12.01.2014	date 29.05.2019	date
name V. Kröll	name B. Saal	name
E - CAE	Document type:	Function group No.:
	HFP	

Status:	Document No.:
SF	Partial Document No.:
AE = changeable	Version No.:
PF = prototype release	
SF = serial release	

W WIRTGEN

Material No.:	Revision No.:
2283383	09
Series code:	Valid for Serial No.:
06WR	from 0001 to 0092
Sheet plant:	
Sheet Location:	

Vario Einsprühleiste 2, FB 2400
vario spraying beam 2, FB 2400

Sheet
21
of
34 Sheets

1 2 3 4 5 6 7 8

1

2

3

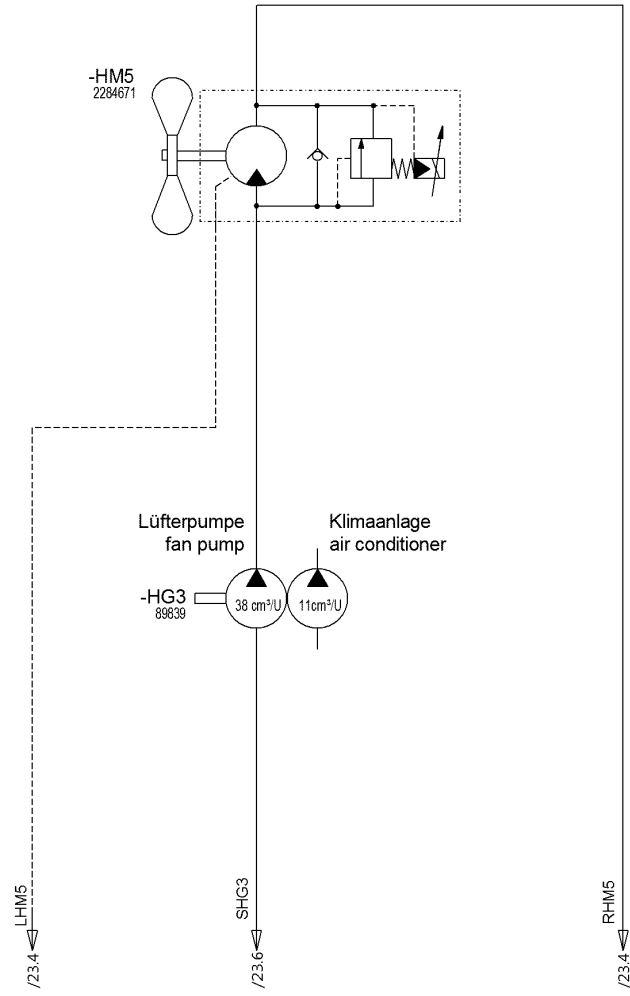
4

5

6

7

8



Drawing by:		Approved by:		last change:	
date	12.01.2014	date	29.05.2019	date	
name	V. Kröll	name	B. Saal	name	
E - CAE		Document type:		Function group No.:	
		HFP			

Status:
 AE = changable
 PF = prototype release
 SF = serial release

Document No.:
 Partial Document No.:
 Version No.:



Material No.: **2283383** Revision No.: **09**
 Series code: **06WR** Valid for Serial No.:
 Sheet plant: from **0001** to **0092**
 Sheet Location:

Lüfterantrieb
fan drive

Sheet
22
of
34 Sheets

1

2

3

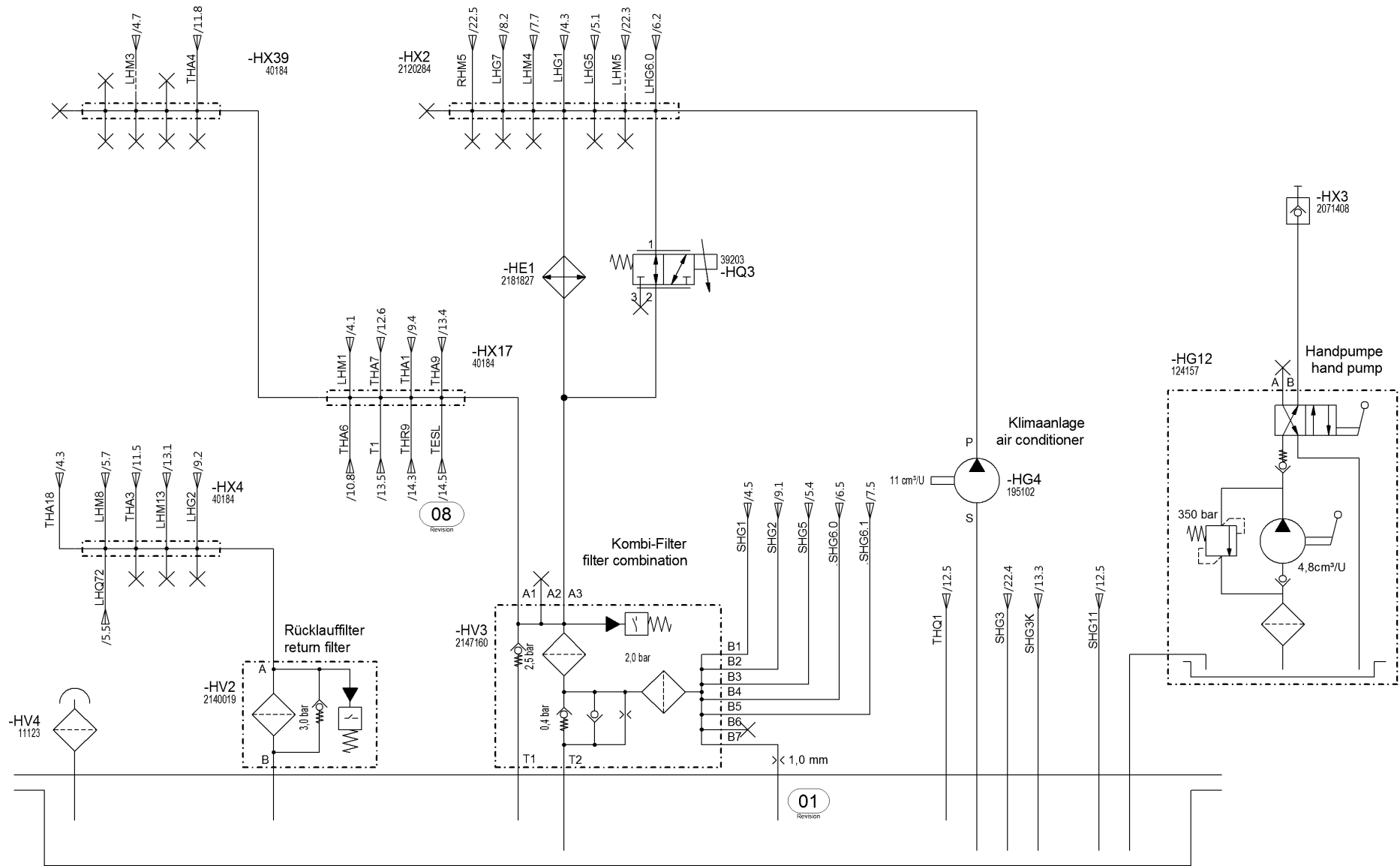
4

5

6

7

8



Drawing by:	Approved by:	last change:
date 12.01.2014	date 29.05.2019	date
name V. Kröll	name B. Saal	name
E - CAE	Document type:	Function group No.:
	HFP	

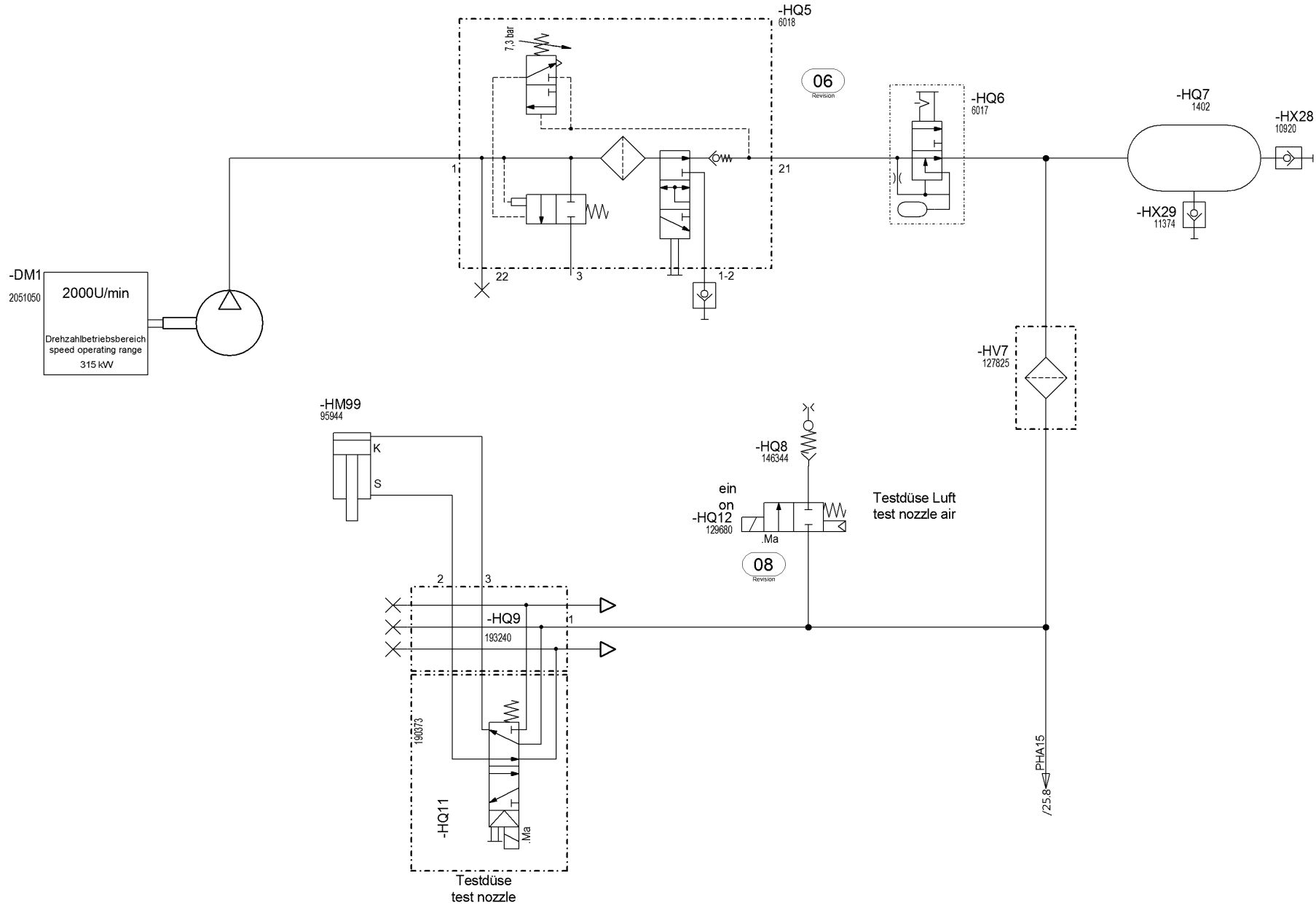
Status:	Document No.:
SF	
AE = changable	Partial Document No.:
PF = prototype release	Version No.:
SF = serial release	

W WIRTGEN

Material No.:	Revision No.:
2283383	09
Series code:	Valid for Serial No.:
06WR	from 0001 to 0092
Sheet plant:	
Sheet Location:	

Rückläufe
return flows

Sheet
23
of
34
Sheets



Drawing by:	Approved by:	last change:
date 12.01.2014	date 29.05.2019	date
name V. Kröll	name B. Saal	name
E - CAE	Document type:	Function group No.:
	HFP	

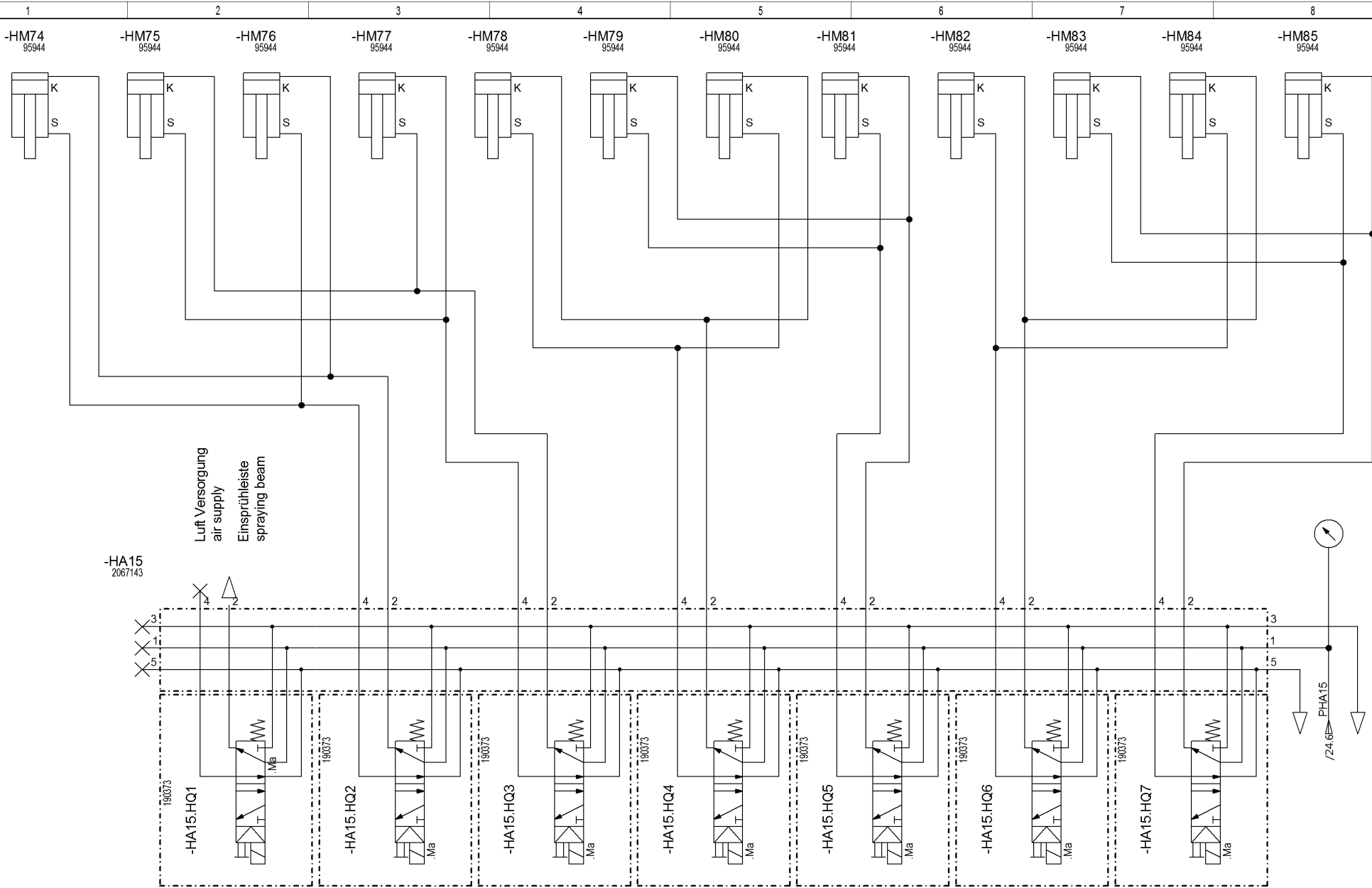
Status:	Document No.:
SF	
AE = changable	Partial Document No.:
PF = prototype release	Version No.:
SF = serial release	

W WIRTGEN

Material No.:	Revision No.:
2283383	09
Series code:	Valid for Serial No.:
06WR	from 0001 to 0092
Sheet plant:	
Sheet Location:	

Druckluftanlage
compressed air system

Sheet
24
of
34
Sheets



Drawing by:	Approved by:	last change:
date 12.01.2014	date 29.05.2019	date
name V. Kröll	name B. Saal	name
E - CAE	Document type:	Function group No.:
	HFP	

Status:	Document No.:
SF	
AE = changable	Partial Document No.:
PF = prototype release	
SF = serial release	Version No.:

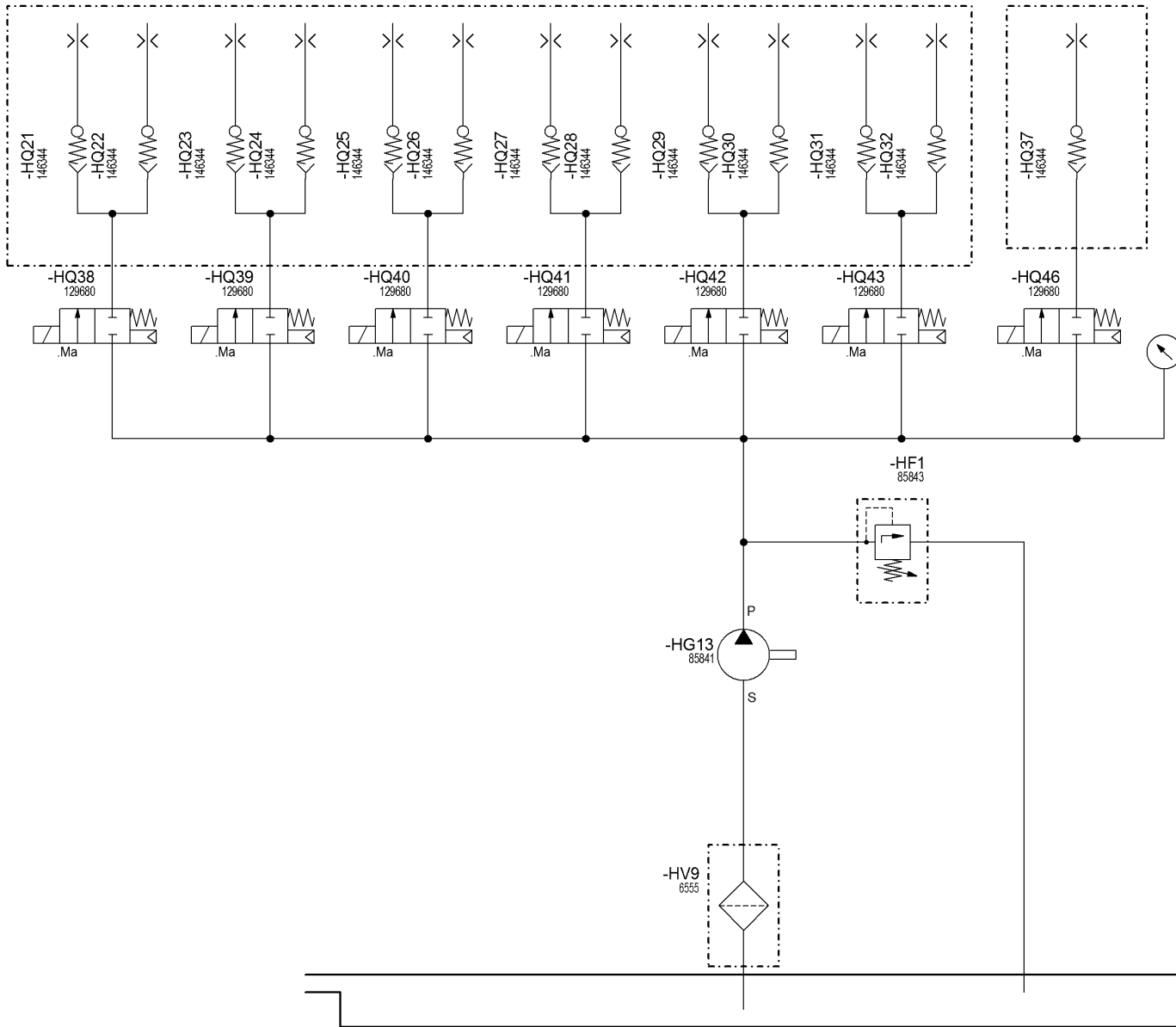
Material No.:	Revision No.:
2283383	09
Series code:	Valid for Serial No.:
06WR	from 0001 to 0092
Sheet plant:	
Sheet Location:	

Druckluftanlage
compressed air system

Sheet
25
of
34 Sheets

1 2 3 4 5 6 7 8

Einsprühleiste
spraying beam



Drawing by:	Approved by:	last change:
date 12.01.2014	date 29.05.2019	date
name V. Kröll	name B. Saal	name
E - CAE	Document type:	Function group No.:
	HFP	

Status:
 AE = changable
 PF = prototype release
 SF = serial release

Document No.:
 Partial Document No.:
 Version No.:



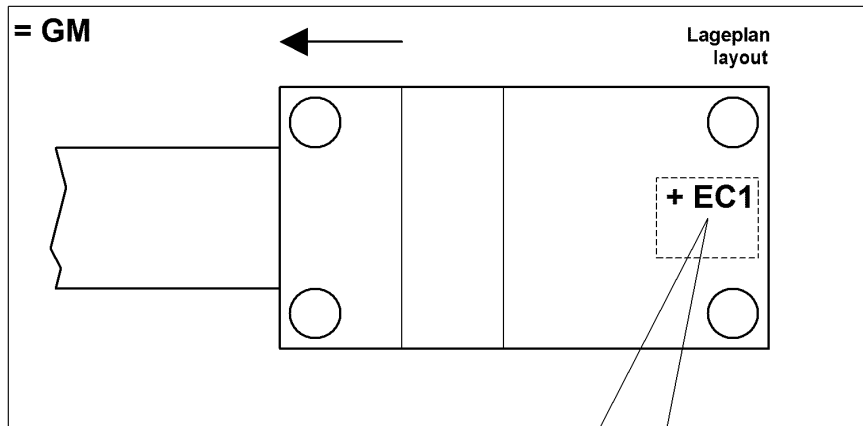
Material No.:
 2283383
Revision No.:
 09
 Series code: 06WR
 Valid for Serial No.: from 0001 to 0092
 Sheet plant:
 Sheet Location:

Prozeßwasser
process water

Sheet
26
 of
34 Sheets

1 2 3 4 5 6 7 8

Aufbau Betriebsmittelkennzeichen / device designation configuration

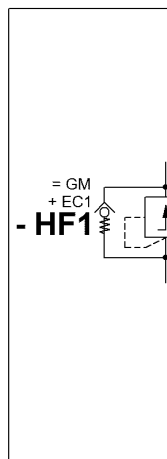


= Anlagenkennzeichen
plant designation

+ Ortskennzeichen
location designation

- Art / Zählnummer
type / number

Geräteanschlussbezeichnung
connection designation



Drawing by:	Approved by:	last change:
date 12.01.2014	date 29.05.2019	date
name V. Kröll	name B. Saal	name
E - CAE	Document type: HFP	Function group No.:

Status:
SF AE = changable
 PF = prototype release
 SF = serial release

Document No.:
 Partial Document No.:
 Version No.:

W WIRTGEN

Material No.:
2283383

Revision No.:
09

Series code:
06WR

Valid for Serial No.:
 from **0001** to **0092**

Sheet plant:
 Sheet Location:

Erklärung Aufbau Betriebsmittelkennzeichen
 Explanation device designation layout

Sheet
27
 of
34 Sheets

Gerätekenbuchstaben, hydraulisch (beispielhaft) / device code letter, hydraulic (exemplified)

<u>Gerätekenbuchstabe / device code letter</u>	<u>Deutsch</u>	<u>English</u>	<u>Gerätekenbuchstabe / device code letter</u>	<u>Deutsch</u>	<u>English</u>
- HA	Ventilblock	valve-block	- HP	Manometer	pressure gauge
- HB	Durchflussmesser Durchflusswächter Druckschalter hydraulisch	flow measuring device flow controller hydraulic pressure switch	- HQ	Bremsventil Kugelhahn Lenkeinheit Wegeventil	braking valve ball valve steering unit direction control valve
- HC	Speicher	accumulator	- HR	Drosselventil Drosselrückschlagventil Druckreduzierventil Lasthalteventil Rückschlagventil	throttle valve throttle check valve pressure reduction valve counter balance valve check valve
- HE	Kühler	cooler	- HT	Getriebe	gearbox
- HF	Druckbegrenzungsventil	pressure limiting valve	- HV	Hydraulikfilter	hydraulic filter
- HG	Hydraulikpumpe	hydraulic pump	- HX	Abdeckplatten Reihenflanschplatte Schnellkupplung	cover plates manifold plate quick-action coupling
- HK	Mengenteiler Prioritätsventil Stromregelventil	flow divider priority valve flow control valve	- Ma	Ventil Magnetspule a	valve coil a
- HM	Hydraulikmotor Hydraulikzylinder	hydraulic motor hydraulic cylinder	- Mb	Ventil Magnetspule b	valve coil b

Drawing by:	Approved by:	last change:
date 12.01.2014	date 29.05.2019	date
name V. Kröll	name B. Saal	name
E - CAE	Document type: HFP	Function group No.:

Status:
SF
 AE = changable
 PF = prototype release
 SF = serial release

Document No.:
 Partial Document No.:
 Version No.:

 **WIRTGEN**

Material No.:
2283383
 Revision No.:
09
 Series code:
06WR
 Valid for Serial No.:
 from **0001** to **0092**
 Sheet plant:
 Sheet Location:

Erklärung Gerätekenbuchstaben, hydraulisch
 Explanation device code letter, hydraulic

Sheet
28
 of
34 Sheets

Linienformate / line formats			Leitungsbezeichnungen / line designations		
<u>Linienart / line type</u>	<u>Linienstärke / Grafik / line thickness / graphic</u>	<u>Bedeutung / standing</u>	<u>Abkürzungen Leitungsbezeichnungen / line designation abbreviations</u>	<u>Deutsch</u>	<u>English</u>
Vollinie / solid line	0,25mm	Standard, Druckleitung, Tankleitung / standard, pressure line, tank line	P	Druckleitung	pressure line
			T	Tankleitung, Rücklaufleitung	tank line, return line
Strichpunktlinie / dash-dotted line	0,5mm	Bauteilumrandung / component border	S	Saugleitung	suction line
			L	Leckölleitung	leakage line
Strichlinie / dashed line	0,25mm	Steuerleitung, Lecköl / control line, leakage oil	X	Steuerleitung	control line
			LS	Load Sensing Leitung	load sensing line

Drawing by:	Approved by:	last change:
date 12.01.2014	date 29.05.2019	date
name V. Kröll	name B. Saal	name
E - CAE	Document type: HFP	Function group No.:

Status:	Document No.:
SF	AE = changable
	PF = prototype release
	SF = serial release
	Partial Document No.:
	Version No.:



Material No.: 2283383	Revision No.: 09
Series code: 06WR	Valid for Serial No.: from 0001 to 0092
Sheet plant:	
Sheet Location:	

Erklärung Linienformate, Leitungsbezeichnungen
Explanation line formats, line designations

Sheet
29
of
34
Sheets

Betriebsmittelkennzeichen / Device designation	Blatt / Sheet	Betriebsmittelkennzeichen / Device designation	Blatt / Sheet	Betriebsmittelkennzeichen / Device designation	Blatt / Sheet
-B48	/11.5	-HA4.HX1	/11.5	-HA10	/15.2
-B49	/4.5	-HA5	/11.3	-HA10.HQ1	/15.3
-DM1	/3.4	-HA6	/10.1	-HA10.HQ2	/15.4
-HA1	/9.4	-HA6.HK1	/10.4	-HA10.HQ3	/15.4
-HA1.HF1	/9.6	-HA6.HK2	/10.4	-HA10.HQ4	/15.5
-HA1.HK1	/9.5	-HA6.HK3	/10.6	-HA10.HQ5	/15.6
-HA1.HQ1	/9.5	-HA6.HQ1	/10.3	-HA10.HQ6	/15.6
-HA1.HX1	/9.5	-HA6.HQ2	/10.3	-HA11	/16.2
-HA1.HX2	/9.5	-HA6.HQ3	/10.6	-HA11.HQ1	/16.3
-HA2.HF1	/9.6	-HA6.HQ4	/10.5	-HA11.HQ2	/16.4
-HA2.HK1	/9.5	-HA6.HQ5	/10.3	-HA11.HQ3	/16.4
-HA2.HK2	/9.5	-HA6.HQ6	/10.6	-HA11.HQ4	/16.5
-HA2.HQ1	/9.5	-HA6.HR1	/10.2	-HA11.HQ5	/16.6
-HA2.HQ2	/9.5	-HA6.HR2	/10.3	-HA11.HQ6	/16.6
-HA2.HX1	/9.5	-HA6.HR3	/10.5	-HA14	/17.2
-HA2.HX2	/9.5	-HA6.HR4	/10.5	-HA14.HA1	/17.2
-HA3.HA1	/11.4	-HA6.HX1	/10.1	-HA14.HQ1	/17.3
-HA3.HQ1	/11.2	-HA7	/12.8	-HA14.HQ2	/17.4
-HA3.HQ2	/11.3	-HA7.HQ1	/12.7	-HA14.HQ3	/17.5
-HA3.HQ3	/11.3	-HA7.HQ2	/12.8	-HA14.HQ4	/17.5
-HA4	/11.8	-HA7.HR1	/12.7	-HA14.HQ5	/17.6
-HA4.HQ1	/11.7	-HA7.HR2	/12.8	-HA14.HQ6	/17.7
-HA4.HQ2	/11.6	-HA7.HX1	/12.7	-HA15	/25.1
-HA4.HQ3	/11.5	-HA8	/12.4	-HA15	/25.2
-HA4.HQ4	/11.5	-HA8.HA1	/12.2	-HA15.HQ1	/25.2
-HA4.HR1	/11.7	-HA8.HQ1	/12.3	-HA15.HQ2	/25.3
-HA4.HR2	/11.6	-HA8.HQ2	/12.2	-HA15.HQ3	/25.4
-HA4.HR3	/11.5	-HA9	/13.3	-HA15.HQ4	/25.5

Drawing by:	Approved by:	last change:
date 12.01.2014	date 29.05.2019	date
name V. Kröll	name B. Saal	name
E - CAE	Document type:	Function group No.:
	HFP	

Status:
 AE = changable
 PF = prototype release
 SF = serial release

Document No.:
 Partial Document No.:
 Version No.:

 **WIRTGEN**

Material No.: **2283383** Revision No.: **09**
 Series code: **06WR** Valid for Serial No.:
 from **0001** to **0092**
 Sheet plant:
 Sheet Location:

Betriebsmittelliste
Device list

Sheet
30
 of
34 Sheets

Betriebsmittelkennzeichen / Device designation	Blatt / Sheet	Betriebsmittelkennzeichen / Device designation	Blatt / Sheet	Betriebsmittelkennzeichen / Device designation	Blatt / Sheet
-HA15.HQ5	/25.5	-HK3	/13.7	-HM32	/10.8
-HA15.HQ6	/25.6	-HK4	/7.6	-HM32.HQ1	/10.8
-HA15.HQ7	/25.7	-HK5	/4.6	-HM33	/12.4
-HA17	/14.1	-HM1	/4.2	-HM34	/12.7
-HA17.HQ1	/14.2	-HM2	/4.2	-HM35	/12.8
-HA17.HX1	/14.2	-HM3	/4.7	-HM36	/15.2
-HA18	/4.3	-HM4	/4.7	-HM37	/15.2
-HA18.HQ1	/4.4	-HM5	/22.4	-HM38	/15.3
-HA18.HX1	/4.3	-HM7	/5.7	-HM39	/15.3
-HA30	/15.2	-HM8	/5.8	-HM40	/15.4
-HA32	/16.2	-HM9	/6.7	-HM41	/15.4
-HB3	/8.7	-HM10	/7.7	-HM42	/15.5
-HC1	/4.5	-HM12	/12.2	-HM43	/15.5
-HC2	/11.2	-HM13	/13.1	-HM44	/15.6
-HC3	/11.2	-HM14	/13.6	-HM45	/15.6
-HE1	/23.4	-HM15	/13.7	-HM46	/15.7
-HF1	/26.5	-HM21	/9.8	-HM47	/15.7
-HG1	/4.4	-HM22	/9.7	-HM52	/16.2
-HG2	/9.1	-HM23	/9.8	-HM53	/16.2
-HG3	/22.4	-HM24	/9.8	-HM54	/16.3
-HG5	/5.2	-HM25	/11.1	-HM55	/16.3
-HG6.0	/6.4	-HM26	/11.1	-HM56	/16.4
-HG6.1	/7.3	-HM29	/10.1	-HM57	/16.4
-HG7	/8.3	-HM29.HQ1	/10.1	-HM58	/16.5
-HG11	/12.5	-HM30	/10.8	-HM59	/16.5
-HG12	/23.7	-HM30.HQ1	/10.8	-HM60	/16.6
-HG13	/26.4	-HM31	/10.1	-HM61	/16.6
-HK2	/13.6	-HM31.HQ1	/10.1	-HM62	/16.7

Drawing by:	Approved by:	last change:
date 12.01.2014	date 29.05.2019	date
name V. Kröll	name B. Saal	name
E - CAE	Document type: HFP	Function group No.:

Status:
 AE = changable
 PF = prototype release
 SF = serial release

Document No.:
 Partial Document No.:
 Version No.:

 **WIRTGEN**

Material No.: **2283383** Revision No.: **09**
 Series code: **06WR** Valid for Serial No.:
 from **0001** to **0092**
 Sheet plant:
 Sheet Location:

Betriebsmittelliste
Device list

Sheet
31
 of
34 Sheets

Betriebsmittelkennzeichen / Device designation	Blatt / Sheet	Betriebsmittelkennzeichen / Device designation	Blatt / Sheet	Betriebsmittelkennzeichen / Device designation	Blatt / Sheet
-HM63	/16.7	-HM95	/17.3	-HM205.2	/20.6
-HM68	/11.6	-HM96	/17.2	-HM206.1	/20.7
-HM69	/11.5	-HM97	/17.2	-HM206.2	/20.7
-HM70	/11.8	-HM99	/24.3	-HM207.1	/20.7
-HM71	/11.7	-HM109	/5.6	-HM207.2	/20.7
-HM72	/12.5	-HM200.1	/18.3	-HM210.1	/19.3
-HM73	/8.7	-HM200.1	/20.3	-HM210.1	/21.3
-HM74	/25.1	-HM200.2	/18.3	-HM210.2	/19.3
-HM75	/25.2	-HM200.2	/20.3	-HM210.2	/21.3
-HM76	/25.2	-HM201.1	/18.4	-HM211.1	/19.4
-HM77	/25.3	-HM201.1	/20.3	-HM211.1	/21.3
-HM78	/25.4	-HM201.2	/18.4	-HM211.2	/19.4
-HM79	/25.4	-HM201.2	/20.3	-HM211.2	/21.3
-HM80	/25.5	-HM202.1	/18.5	-HM212.1	/19.5
-HM81	/25.6	-HM202.1	/20.4	-HM212.1	/21.4
-HM82	/25.6	-HM202.2	/18.5	-HM212.2	/19.5
-HM83	/25.7	-HM202.2	/20.4	-HM212.2	/21.4
-HM84	/25.7	-HM203.1	/18.5	-HM213.1	/19.5
-HM85	/25.8	-HM203.1	/20.5	-HM213.1	/21.5
-HM86	/17.7	-HM203.2	/18.5	-HM213.2	/19.5
-HM87	/17.7	-HM203.2	/20.5	-HM213.2	/21.5
-HM88	/17.6	-HM204.1	/18.6	-HM214.1	/19.6
-HM89	/17.6	-HM204.1	/20.5	-HM214.1	/21.5
-HM90	/17.5	-HM204.2	/18.6	-HM214.2	/19.6
-HM91	/17.5	-HM204.2	/20.5	-HM214.2	/21.5
-HM92	/17.4	-HM205.1	/18.7	-HM215.1	/19.7
-HM93	/17.4	-HM205.1	/20.6	-HM215.1	/21.6
-HM94	/17.3	-HM205.2	/18.7	-HM215.2	/19.7

Drawing by:	Approved by:	last change:
date 12.01.2014	date 29.05.2019	date
name V. Kröll	name B. Saal	name
E - CAE	Document type: HFP	Function group No.:

Status:
 AE = changable
 PF = prototype release
 SF = serial release

Document No.:
 Partial Document No.:
 Version No.:



Material No.: **2283383** Revision No.: **09**
 Series code: **06WR** Valid for Serial No.:
 from **0001** to **0092**
 Sheet plant:
 Sheet Location:

Betriebsmittelliste
 Device list

Sheet
32
 of
34 Sheets

Betriebsmittelkennzeichen / Device designation	Blatt / Sheet	Betriebsmittelkennzeichen / Device designation	Blatt / Sheet	Betriebsmittelkennzeichen / Device designation	Blatt / Sheet
-HM215.2	/21.6	-HQ37	/26.6	-HX2	/23.3
-HM216.1	/21.7	-HQ38	/26.1	-HX3	/23.8
-HM216.2	/21.7	-HQ39	/26.2	-HX4	/23.1
-HM217.1	/21.7	-HQ40	/26.3	-HX6	/15.1
-HM217.2	/21.7	-HQ41	/26.4	-HX9	/15.1
-HP1	/11.3	-HQ42	/26.4	-HX11	/16.1
-HQ1	/12.5	-HQ43	/26.5	-HX14	/16.1
-HQ2	/12.5	-HQ46	/26.6	-HX15	/4.5
-HQ3	/23.5	-HQ53	/11.6	-HX17	/23.3
-HQ5	/24.5	-HQ72	/5.5	-HX28	/24.8
-HQ6	/24.6	-HR1	/11.3	-HX29	/24.7
-HQ7	/24.7	-HR2	/9.7	-HX30	/12.5
-HQ8	/24.5	-HR6	/11.1	-HX34	/9.1
-HQ9	/24.3	-HR7	/12.5	-HX39	/23.1
-HQ11	/24.3	-HR9	/14.3	-HX41	/17.1
-HQ12	/24.5	-HR10	/9.1	-HX42	/17.1
-HQ21	/26.1	-HR12	/18.2	-HX63	/11.3
-HQ22	/26.2	-HR13	/19.2	-HX64	/18.3
-HQ23	/26.2	-HR14	/20.1	-HX65	/19.3
-HQ24	/26.2	-HR15	/21.1	-HX66	/20.2
-HQ25	/26.3	-HT1	/3.5	-HX67	/21.2
-HQ26	/26.3	-HV1	/9.1	-HX68	/14.6
-HQ27	/26.3	-HV2	/23.3	-HX69	/14.6
-HQ28	/26.4	-HV3	/23.4	-HX70	/14.6
-HQ29	/26.4	-HV4	/23.1	-HX71	/14.6
-HQ30	/26.5	-HV7	/24.6	-HX72	/14.6
-HQ31	/26.5	-HV9	/26.4	-HX73	/14.6
-HQ32	/26.5	-HX1	/11.4	-HX74	/18.2

Drawing by:	Approved by:	last change:
date 12.01.2014	date 29.05.2019	date
name V. Kröll	name B. Saal	name
E - CAE	Document type:	Function group No.:
	HFP	

Status:
 AE = changable
 PF = prototype release
 SF = serial release

Document No.:
 Partial Document No.:
 Version No.:

 **WIRTGEN**

Material No.: **2283383** Revision No.: **09**
 Series code: **06WR** Valid for Serial No.:
 from **0001** to **0092**
 Sheet plant:
 Sheet Location:

Betriebsmittelliste
Device list

Sheet
33
 of
34 Sheets

Betriebsmittelkennzeichen / Device designation	Blatt / Sheet	Betriebsmittelkennzeichen / Device designation	Blatt / Sheet	Betriebsmittelkennzeichen / Device designation	Blatt / Sheet
-HX75	/19.2				
-HX76	/20.1				
-HX77	/21.1				
-HX79	/18.2				
-HX80	/19.2				
-HX81	/20.1				
-HX82	/21.1				

Drawing by:	Approved by:	last change:
date 12.01.2014	date 29.05.2019	date
name V. Kröll	name B. Saal	name
E - CAE	Document type: HFP	Function group No.:

Status:	Document No.:
SF	
AE = changable	Partial Document No.:
PF = prototype release	
SF = serial release	Version No.:



Material No.:	Revision No.:
2283383	09
Series code:	Valid for Serial No.:
06WR	from 0001 to 0092
Sheet plant:	
Sheet Location:	

Betriebsmittelliste
Device list

Sheet
34
of
34
Sheets